

AG SHIELD



**12" Cross Auger for AGCO Massey 9250
DynaFlex for 25 ft (ASM # 406500)- 30ft (# 406501)
35ft (# 406502) 40ft (#406503) 45ft (#406504)
Headers- all years**

OPERATOR'S HANDBOOK AND PARTS MANUAL

Ag Shield Manufacturing
Box 9, Benito, Manitoba R0L 0C0
phone 800-561-0132 or 204-539-2000
fax 204-539-2130
e-mail address sales@agshield.com
Please visit web site at <http://www.agshield.com>
Printed in Canada - February 3 2014

REV 2

-Part No 405925

WARRANTY REGISTRATION-

RETURN TO



AG SHIELD MANUFACTURING

BOX 9, BENITO, MB, R0L 0C0

Phone 204-539-2000- fax 204-539-2130

Email sales@agshield.com

This form must be filled out by the dealer(if applicable) and signed by both the dealer and customer at the time of delivery, and returned to Ag Shield within 10 days to validate warranty.

| | |
|--|--|
| Customer _____ | Dealer _____ |
| Address _____ | Address _____ |
| City, _____ | City, _____ |
| State/ Prov. _____ Postal / Zip Code _____ | State/ Prov. _____ Postal / Zip Code _____ |
| phone(_____) _____ | phone(_____) _____ |
| fax _____ | fax _____ |
| email address _____ | email address _____ |

| | |
|-----------------------|---|
| Model and size _____ | Delivery Date _____ |
| Serial no/ no's _____ | Used for - <input type="checkbox"/> farm <input type="checkbox"/> custom work |

SAFETY INSPECTION REPORT

| | |
|---|--|
| _____ Hydraulic connections all sealed | _____ Review operating and safety instructions |
| _____ safety, operations, parts manual received | _____ All decals installed |
| _____ Tires correctly inflated | _____ Reflectors clean |
| | _____ Guards and shields installed |

I have thoroughly instructed the customer on the above described equipment, including the content of the Owner's Handbook, equipment care, adjustments, safe operation, and applicable warranty policy.

Date _____ Dealer signature _____

The equipment was complete with all parts in good working order except as noted below. I have received the owner's handbook, and I have been thoroughly instructed in the use of it. I have been instructed in the care, adjustments, the safe operation of the machine, and the applicable warranty policy.

Date _____ Customer signature _____

Except _____

1. TABLE OF CONTENTS

- 1. TABLE OF CONTENTS 3
- 2. INTRODUCTION AND SIGN-OFF FORM 4
- 3. SAFETY 5
 - 3.1. SAFETY OVERVIEW 6
 - 3.2. GENERAL SAFETY 6
 - 3.3. MAINTENANCE SAFETY 7
 - 3.4. HYDRAULIC SAFETY 7
 - 3.5. SHEAR SAFETY 7
 - 3.6. STORAGE SAFETY 7
 - 3.7. TRANSPORT SAFETY 7
 - 3.8. REFUELING SAFETY 8
 - 3.9. TIRE SAFETY 8
 - 3.10. OPERATING SAFETY 8
 - 3.11. CROSS AUGER SAFETY 8
 - 3.12. SAFETY DECALS 9
- 4. SETUP FROM SHIPPING MODE -INSTALLATION 9250 SERIES ALL MODELS 10
 - 4.1. HEADER EARLIER THAN A 2014 INSTALLATION OF AUGER MOUNTS 11
 - 4.2. END MOUNT DRILLING INSTRUCTIONS 11
 - 4.3. CENTER MOUNT WELDING INSTRUCTIONS 12
 - 4.4. CENTER MOUNT INSTALL 16
 - 4.5. ADJUSTING AUGER HEIGHT 19
 - 4.6. INSTALL LH END AND AUGER 20
 - 4.7. HYDRAULICS 22
 - 4.8. STRIPPER BAR INSTALLATION 25
- 5. OPERATIONS 26
 - 5.1. FIELD SETTING THE CROSS AUGER 26
- 6. CROSS AUGER PARTS ALL MODELS 9250 27
 - 6.1. DIRECT DRIVE ASSEMBLY 28
 - 6.2. CENTER MOUNT AGCO 9250 ALL MODELS 29
 - 6.3. LEFT END AGCO 9250 ALL MODELS 30
 - 6.4. RH MOUNT AGCO 9250 – ALL MODELS 31
- 7. WARRANTY 32

2. INTRODUCTION AND SIGN-OFF FORM

Congratulations! on your choice of an Ag Shield cross auger. This equipment has been designed and manufactured to meet the harvesting needs of the discerning farmers and custom harvesters.

OPERATOR ORIENTATION - The directions left, right, front and rear, as mentioned throughout this manual, are as seen from the tractor driver's seat and facing in the normal direction of travel.

Ag Shield follows the general safety standards specified by the American Society of Agricultural Engineers (ASAE) and the Occupational Safety and Health Administration (OSHA). Anyone who will be operating and/or maintaining the Ag Shield Cross auger must read and clearly understand ALL Safety, Operating, and Maintenance information presented in this manual.

Do not operate or allow anyone else to operate this equipment until such information has been reviewed. Review this information annually before season start-up. Make these reviews of safety and operation a standard practice for all of your equipment. An untrained operator is **not qualified** to operate this machine.

A sign off sheet is provided for your record keeping to show that all personnel who will be working with the equipment have read and understood the information in the Operators Handbook and have been instructed in the operation of the equipment.

SIGN-OFF FORM

| DATE | OPERATORS SIGNATURE | EMPLOYERS SIGNATURE |
|------|---------------------|---------------------|
| | | |
| | | |
| | | |
| | | |
| | | |
| | | |
| | | |
| | | |
| | | |
| | | |
| | | |
| | | |
| | | |
| | | |
| | | |
| | | |
| | | |
| | | |
| | | |
| | | |

3. SAFETY

SAFETY ALERT SYMBOL

This Safety Alert symbol means:
ATTENTION! BECOME ALERT!
YOUR SAFETY IS INVOLVED!

The Safety Alert symbol identifies important safety messages on the Ag Shield Cross auger and in the manual. When you see this symbol, be alert to the possibility of personal injury or death. Follow the instructions in the safety message.



3 Big Reasons

Accidents Disable and Kill
Accidents Cost
Accidents Can Be Avoided

SIGNAL WORDS:

Note the use of the signal words **DANGER**, **WARNING** and **CAUTION** with the safety messages. The appropriate signal word for each message has been selected using the following guide-lines:

- DANGER** - An immediate and specific hazard which **WILL** result in severe personal injury or death if the proper precautions are not taken.
- WARNING** - A specific hazard or unsafe practice which **COULD** result in severe personal injury or death if proper precautions are not taken.
- CAUTION** - Unsafe practices which **COULD** result in personal injury if proper practices are not taken, or as a reminder of good safety practices.

3.1. SAFETY OVERVIEW

YOU are responsible for the **SAFE** operation and maintenance of your Ag Shield Cross auger. **YOU** must ensure that you and anyone else who is going to operate, maintain or work around the auger be familiar with the operating and maintenance procedures and related **SAFETY** information contained in this manual. This manual will take you step-by-step through your working day and alerts you to all good safety practices that should be adhered to while operating the auger.

Remember, **YOU** are the key to safety. Good safety practices not only protect you but also the people around you. Make these practices a working part of your safety program. Be certain that **EVERYONE** operating this equipment is familiar with the recommended operating and maintenance procedures and follows all the safety precautions. Most accidents can be prevented. Do not risk injury or death by ignoring good safety practices.

- Cross auger owners must give operating instructions to operators or employees before allowing them to operate the Cross auger, and at least annually thereafter per OSHA regulation 1928.57.
- The most important safety device on this equipment is a **SAFE** operator. It is the operator's responsibility to read and understand **ALL** Safety and Operating instructions in the manual and to follow these. All accidents can be avoided.
- A person who has not read and understood all operating and safety instructions is not qualified to operate the machine. An untrained operator exposes himself and bystanders to possible serious injury or death.
- Do not modify the equipment in any way. Unauthorized modification may impair the function and/or safety and could affect the life of the equipment.
- Think SAFETY! Work SAFELY!

3.2. GENERAL SAFETY

1. Read and understand the Operator's Manual and all safety signs before operating, maintaining, adjusting the Cross auger.
2. Only trained competent persons shall operate the cross auger . An untrained operator is not qualified to operate the machine.



3. Have a first-aid kit available for use should the need arise and know how to use it.



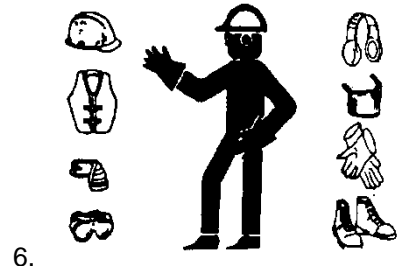
4. Have a fire extinguisher available for use should the need arise and know how to use it.



5. Do not allow riders.

6. Wear appropriate protective gear. This list includes but is not limited to:

- A hard hat
- Protective shoes with slip resistant soles
- Protective glasses or goggles
- Heavy gloves
- Hearing protection



7. Stop the engine, place all controls in neutral, set park brake, remove ignition key and wait for all moving parts to stop before servicing, adjusting, repairing or unplugging.
8. Review safety related items with all personnel annually.

3.3. MAINTENANCE SAFETY

1. Review the Operators Manual and all safety items before working with, maintaining or operating the Cross auger.
2. Stop the tractor engine, place all controls in neutral, set park brake, remove ignition key, wait for all moving pads to stop before servicing, adjusting, or repairing.
3. Before applying pressure to a hydraulic system, make sure all components are tight and that steel lines, hoses and couplings are not damaged.
4. Relieve pressure from hydraulic circuit before servicing or disconnecting from tractor.
5. Keep hands, feet, clothing and hair away from all moving and/or rotating parts.
6. Clear the area of bystanders, especially children, when carrying out any maintenance and repairs or making any adjustments.
7. Place stands or blocks under the frame before working beneath the machine.

3.4. HYDRAULIC SAFETY

1. Always place all tractor hydraulic controls in neutral before dismounting.
2. Make sure that all components in the hydraulic system are kept in good condition and are clean.
3. Replace any worn, cut, abraded, flattened or crimped hoses and steel lines.
4. Do not attempt any makeshift repairs to the hydraulic lines, fittings or hoses by using tape, clamps or cements. The hydraulic system operates under extremely high-pressure. Such repairs will fail suddenly and create a hazardous and unsafe condition.
5. Wear proper hand and eye protection when searching for a high-pressure hydraulic leak. Use a piece of wood or cardboard as a backstop instead of hands to isolate and identify a leak.
6. If injured by a concentrated high-pressure stream of hydraulic fluid, seek medical attention immediately. Serious infection or toxic reaction can develop from hydraulic fluid piercing the skin surface.

7. Before applying pressure to hydraulic system make sure that all connections are tight and that all hoses and fittings are in good condition.

3.5. SHEAR SAFETY

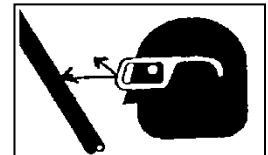
The operator must obey all safety labels.

1. Keep operators and bystanders away from all moving parts.
2. Shut off tractor engine and remove key before coming close to the implement or doing any maintenance
3. Never service or unplug shears while they are running, a single slip and you could be badly hurt or killed.

3.6. STORAGE SAFETY

1. Store unit in an area away from human activity.
2. Do not permit children to play on or around the stored Cross auger.

3.7. TRANSPORT SAFETY



1. Read and understand ALL the information in the Operator's Manual regarding procedures and SAFETY when operating the Cross auger in the field and/or on the road.
2. Check with local authorities regarding machinery transport on public roads. Obey all applicable laws and regulations.
3. Always travel at a safe speed. Use caution when making corners or meeting traffic.
4. Make sure the SMV (Slow Moving Vehicle) emblem and all the lights and reflectors that are required by the local highway and transport authorities are in place, are clean and can be seen clearly by all overtaking and oncoming traffic. Daybreak and dusk are particularly dangerous and pilot vehicles are recommended.

5. Ensure that the trailer is hitched positively to the towing vehicle. Always use a safety chain between the trailer and the tractor.
6. Keep to the right and yield the right-of-way to allow faster traffic to pass. Drive on the road shoulder, if permitted by law.
7. Always use hazard warning flashers on the Cross auger when transporting unless prohibited by law.

3.8. REFUELING SAFETY

1. Handle fuel with care. It is highly flammable.



2. Do not refuel the machine while smoking or when near open flame or sparks.

3. Stop engine before refueling.

Clean up spilled fuel before restarting engine.

3.9. TIRE SAFETY

1. Failure to follow proper procedures when mounting a tire on a wheel or rim can produce an explosion, which may result in serious injury or death.
2. Do not attempt to mount a tire unless you have the proper equipment and experience to do the job.
3. Have a qualified tire dealer or repair service perform required tire maintenance.
4. Operate the tires at the pressures, loads, and speeds suggested by the manufacturer.

3.10. OPERATING SAFETY

1. Read and understand the Operator's Manual and all safety signs before using.
2. Stop engine place all controls in neutral, set park brake, remove ignition key, wait for all moving parts to stop before servicing, adjusting, repairing or unplugging.
3. Before conditioning a field, be familiar with all potential hazards: trees, rocks ditches, gullies, etc. Plan your route to avoid hazards. Keep Cross auger width in mind when maneuvering to avoid obstacles.

4. Keep hands, feet, hair and clothing away from all moving and/or rotating parts.
5. Keep all shields and guards in place when operating.
6. Do not allow riders on the Cross auger or tractor during operation or transporting.
7. Clear the area of all bystanders, especially children, before starting.
8. Stay away from machine when folding deflectors. Keep others away.
9. Before applying pressure to the hydraulic system, make sure all components are tight and that steel lines, hoses and couplings are not damaged.
10. Review safety instructions annually

3.11. CROSS AUGER SAFETY

The cross auger has sufficient power to sever limbs and cause serious to fatal injury. Always stop the cross auger before dismounting. Always be certain that no one is in front of combine header Shield before engaging the auger drive.

When greasing the auger, do so with the combine motor shut off and the park brake securely set.

Never attempt to help the crop move along the canvases with a wrench or other item that might get into the auger and draw the wrench holder into the auger.

3.12. SAFETY DECALS

Become familiar with these decals and the hazards they are marking.



part #113522

part #113524



part # 113552

4. Setup from Shipping Mode -Installation 9250 series All models

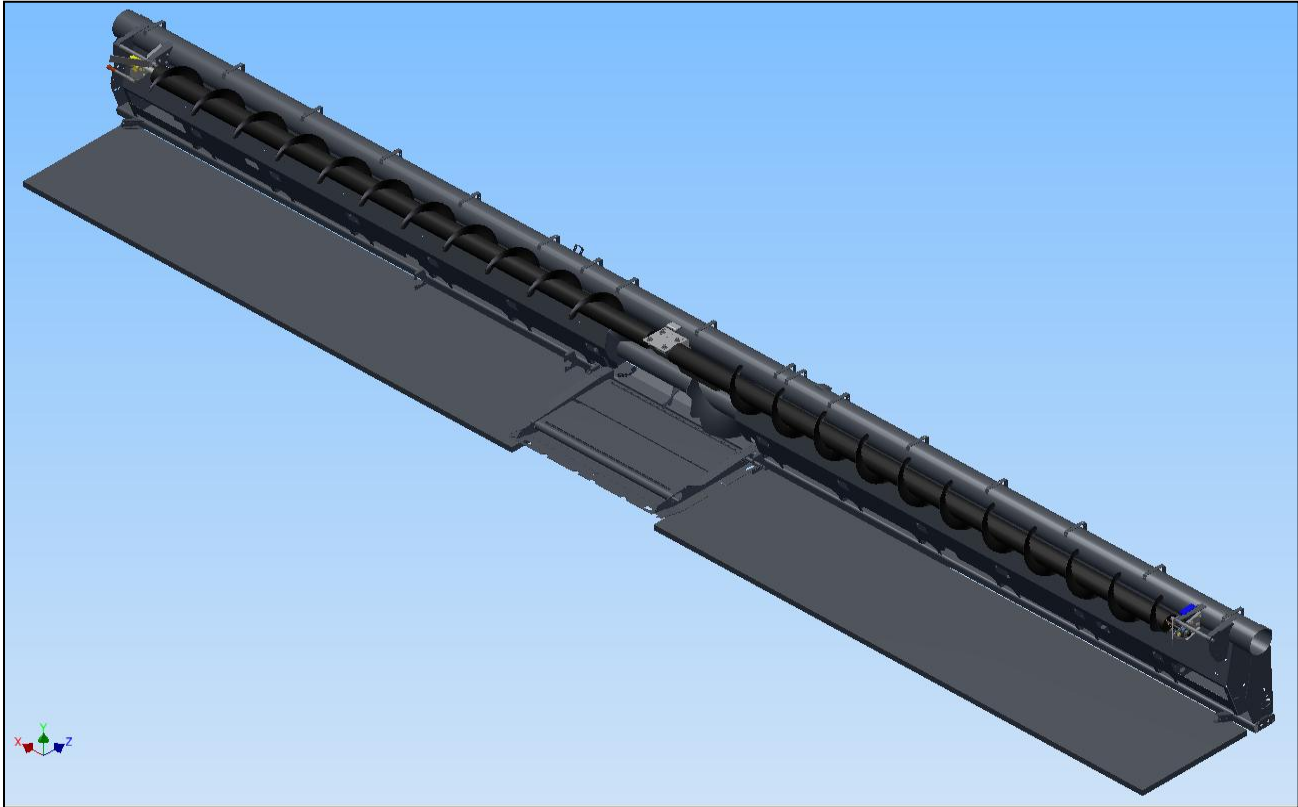


FIGURE 1 COMPLETE HEADER 406502 35 FOOT AGCO 9250



4.1. HEADER EARLIER THAN A 2014 INSTALLATION OF AUGER MOUNTS

- 1) If you have a header that is earlier than a 2014 then you will need to drill 3 holes in the LH and RH end mounts and weld a center bracket to the header using these directions. Colors in the manual do not reflect the actual color of the part.

4.2. END MOUNT DRILLING INSTRUCTIONS

- 2) Raise the reel to the top of the stroke with the hydraulic controls. Place the safety cylinder locks on one or both ends of the reel to prevent the reel from falling on person working below.
- 3) Starting on the RH end mount, use the template provided and place it against the header mount as shown in the screen shot below.
- 4) Drill the three holes using the drill bit provided in the kit.(17/32")150052 split point drill bit for easy hand drilling.

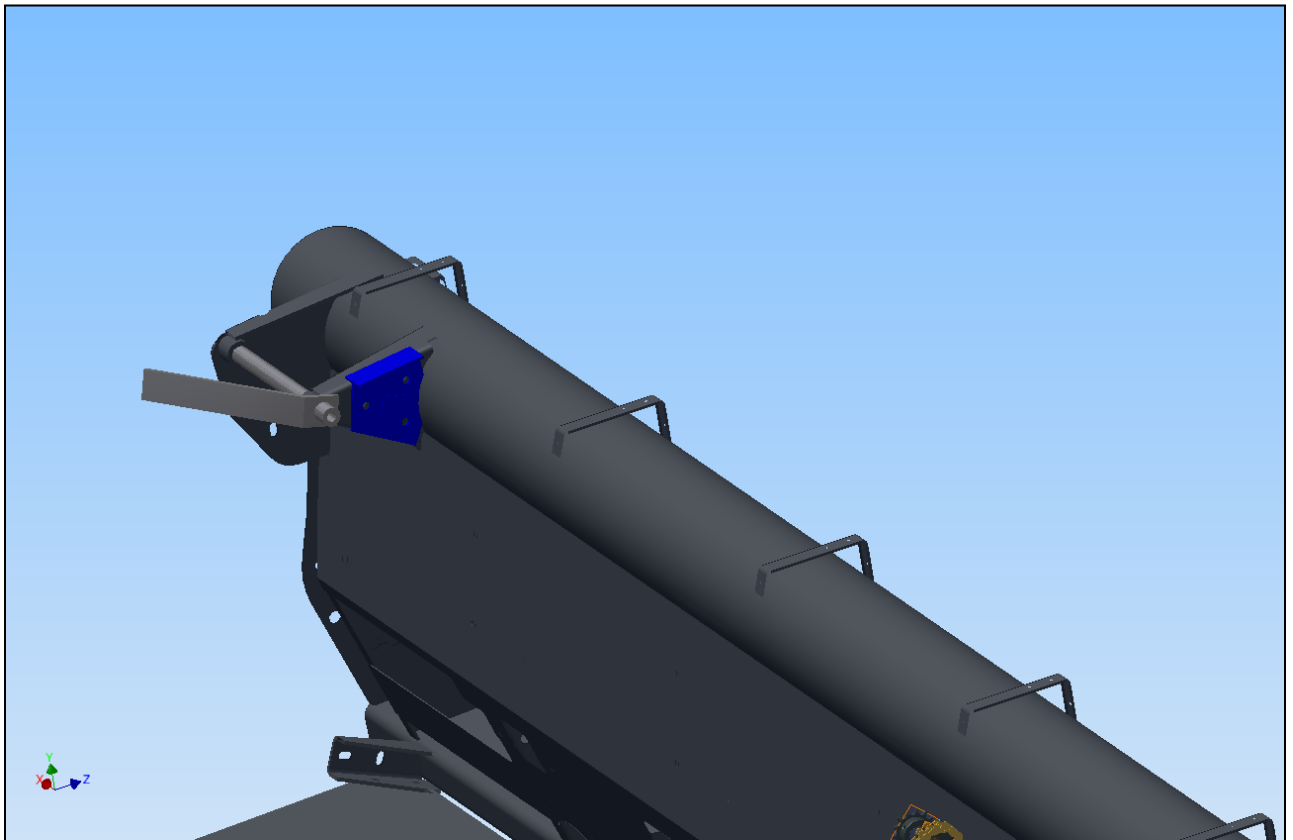


FIGURE 2 DRILLING RIGHT HAND MOUNT HOLES

- 5) Move the template to the left end and repeat the drilling process. See Figure 3 Template on Left hand mount ready to drill

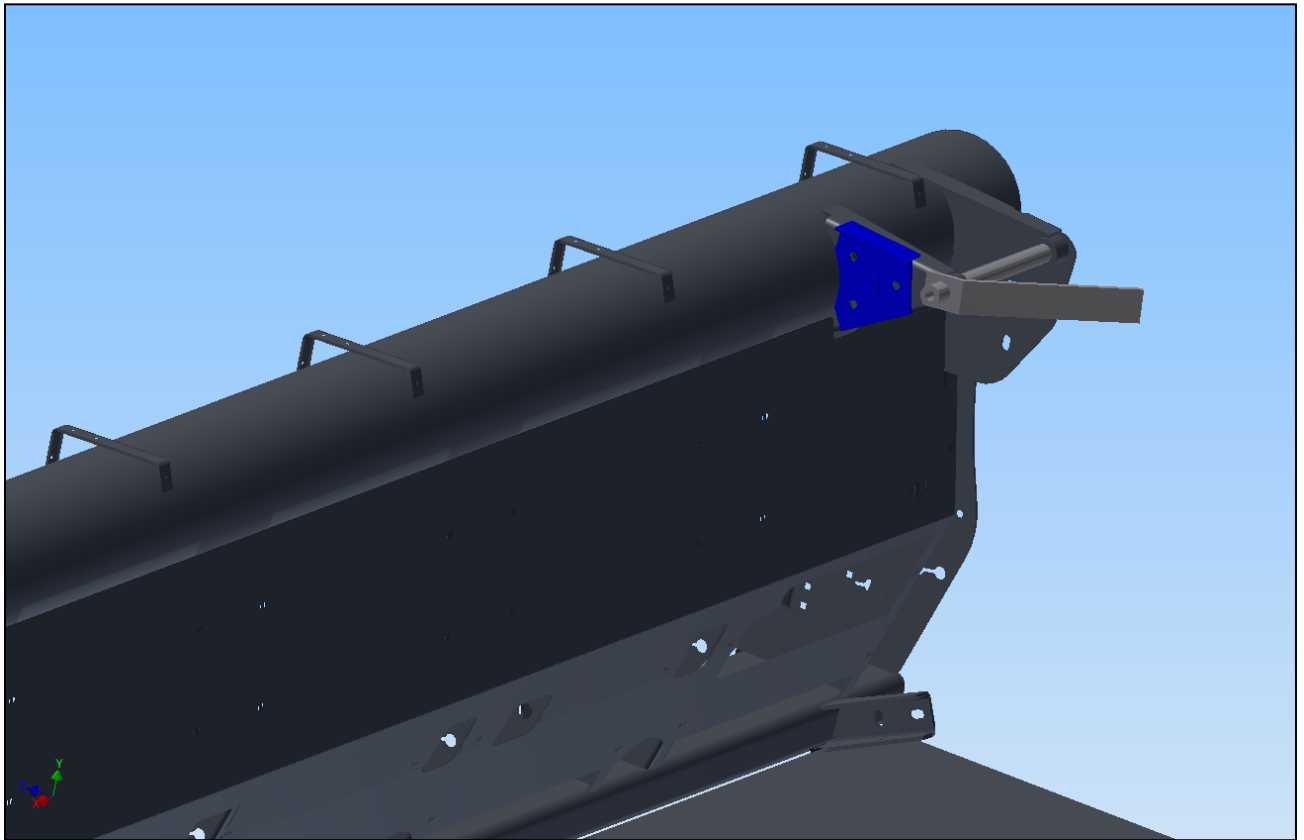


FIGURE 3 TEMPLATE ON LEFT HAND MOUNT READY TO DRILL

4.3. CENTER MOUNT WELDING INSTRUCTIONS

- 6) Place burn resistance cover over center canvas to prevent damage from welding slag.



WARNING:

BE VERY CAREFUL TO AVOID WELDING ARC CONTACT WITH STEEL HYDRAULIC LINE WHEN WELDING THE CENTER MOUNT BRACKET.

- 7) remove the plastic guard that is on top of the header to expose the brackets that support the plastic guard.
- 8) Use the chart below to determine the correct measurement to the right side of the green mount # for your header- for example for a 35 foot header dimension C is 190.48 inches.

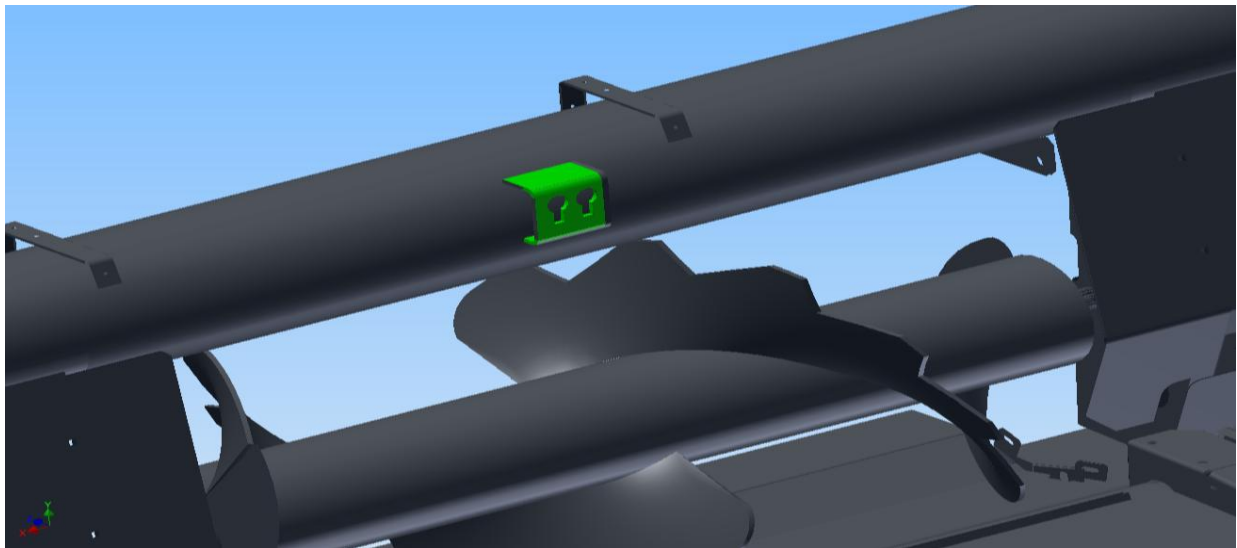


FIGURE 4 CENTER MOUNT WELDED TO FRAME (GREEN)

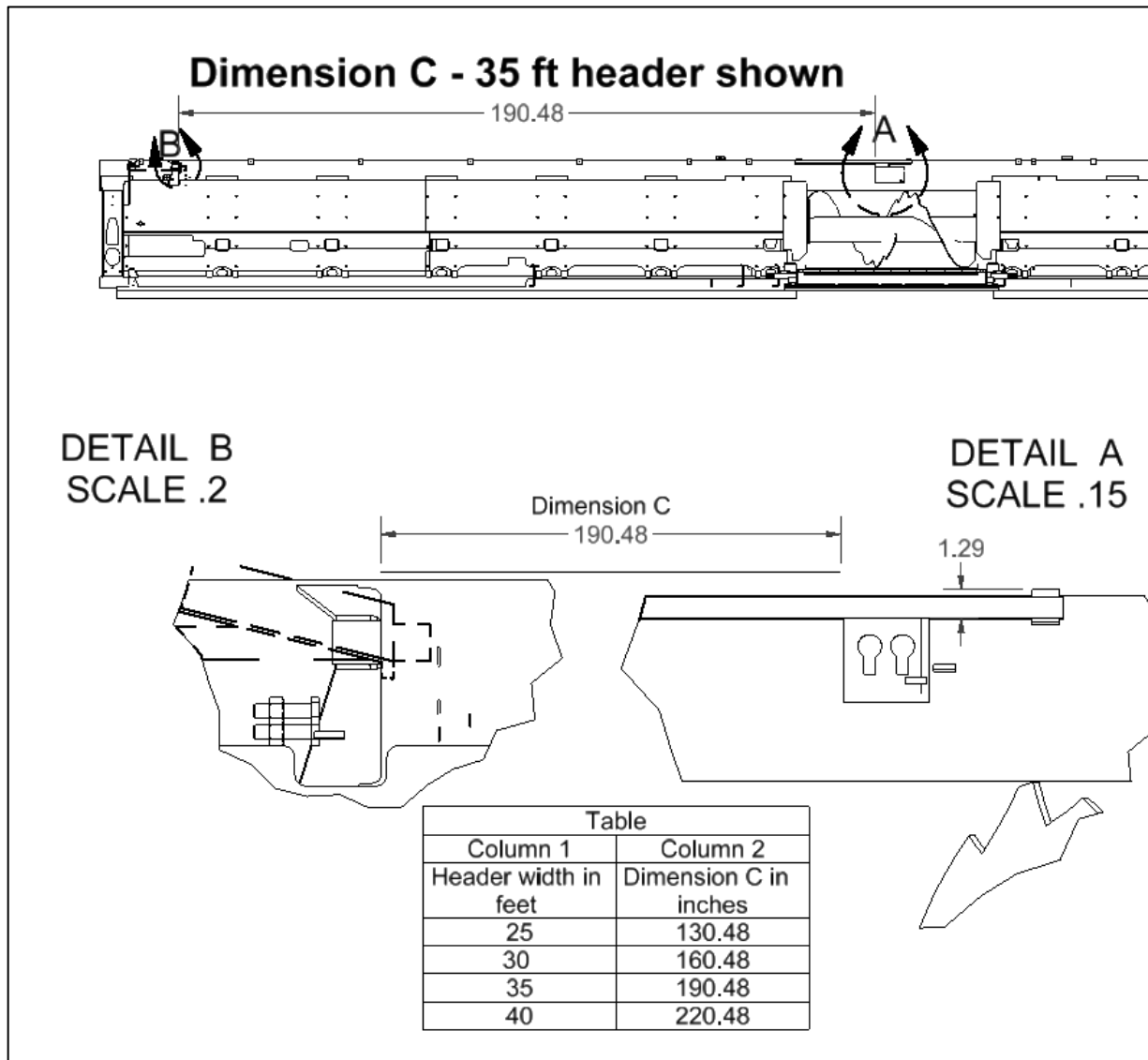


FIGURE 5 MEASUREMENTS CHART FOR AGCO 9250 HEADERS

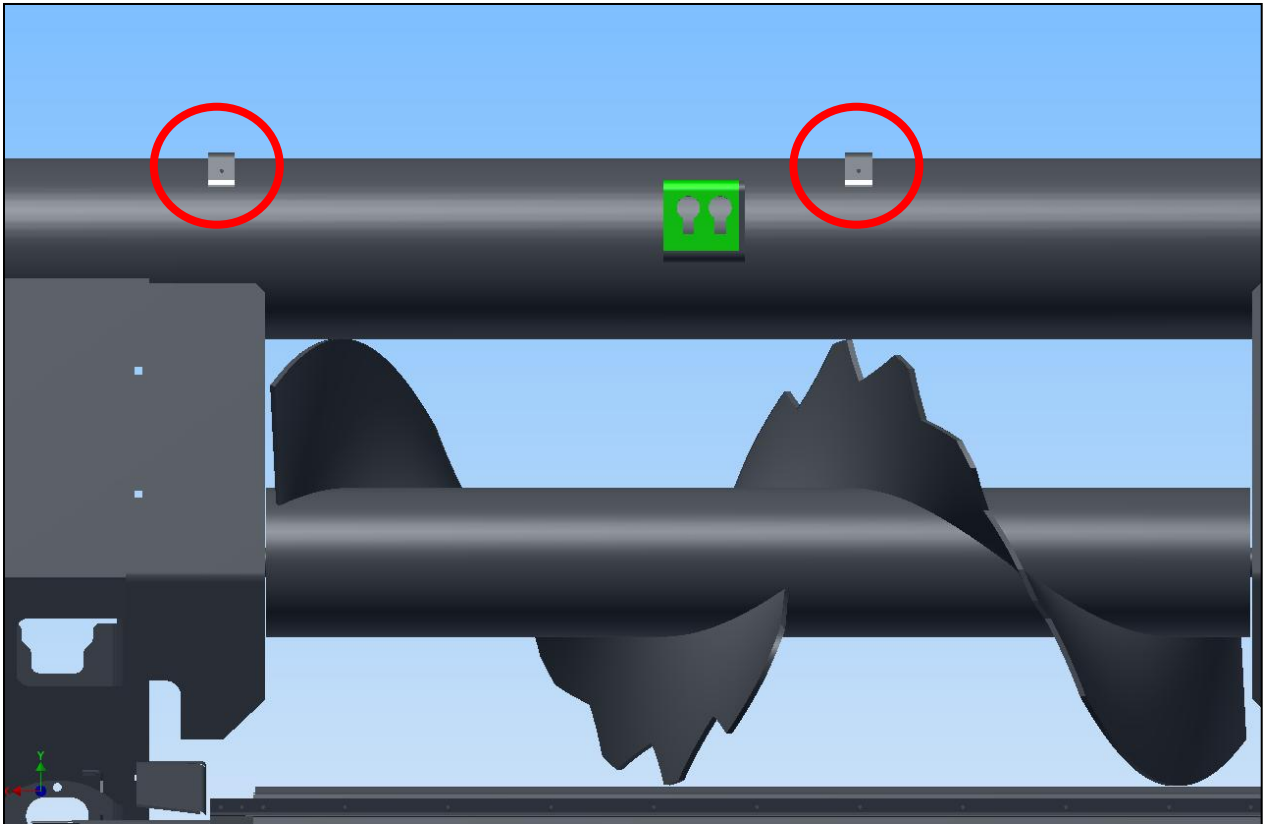
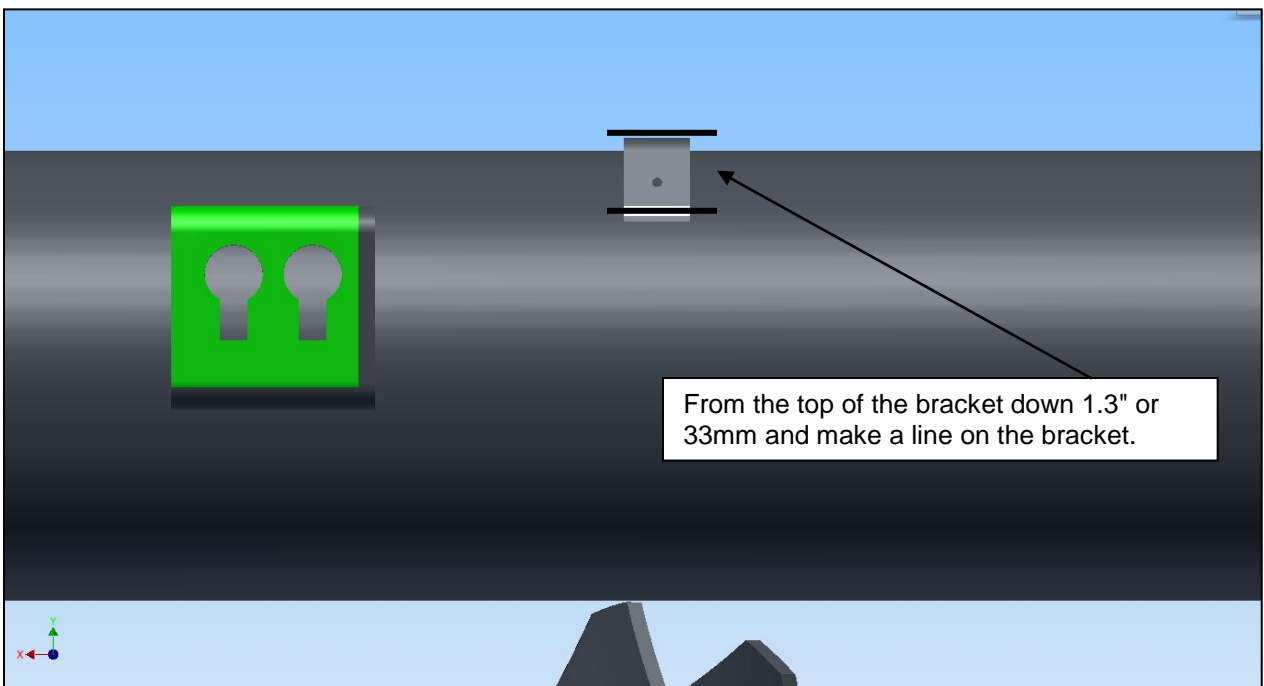


FIGURE 6 WHITE MARKS 1.3" BELOW TOP OF METAL MOUNTS

- 9) Measure down 1.29 inches or 33 mm from the top of the bracket, and mark a line on both metal mounts for the plastic cover as shown in Figure 6 White marks 1.3" below top of metal mounts



From the top of the bracket down 1.3" or 33mm and make a line on the bracket.

FIGURE 7 MEASURE DISTANCE BELOW THE TOP OF BRACKET

10) Place a straight edge along the lines as shown in Figure 8 straight edge on lines for top of the mount bracket

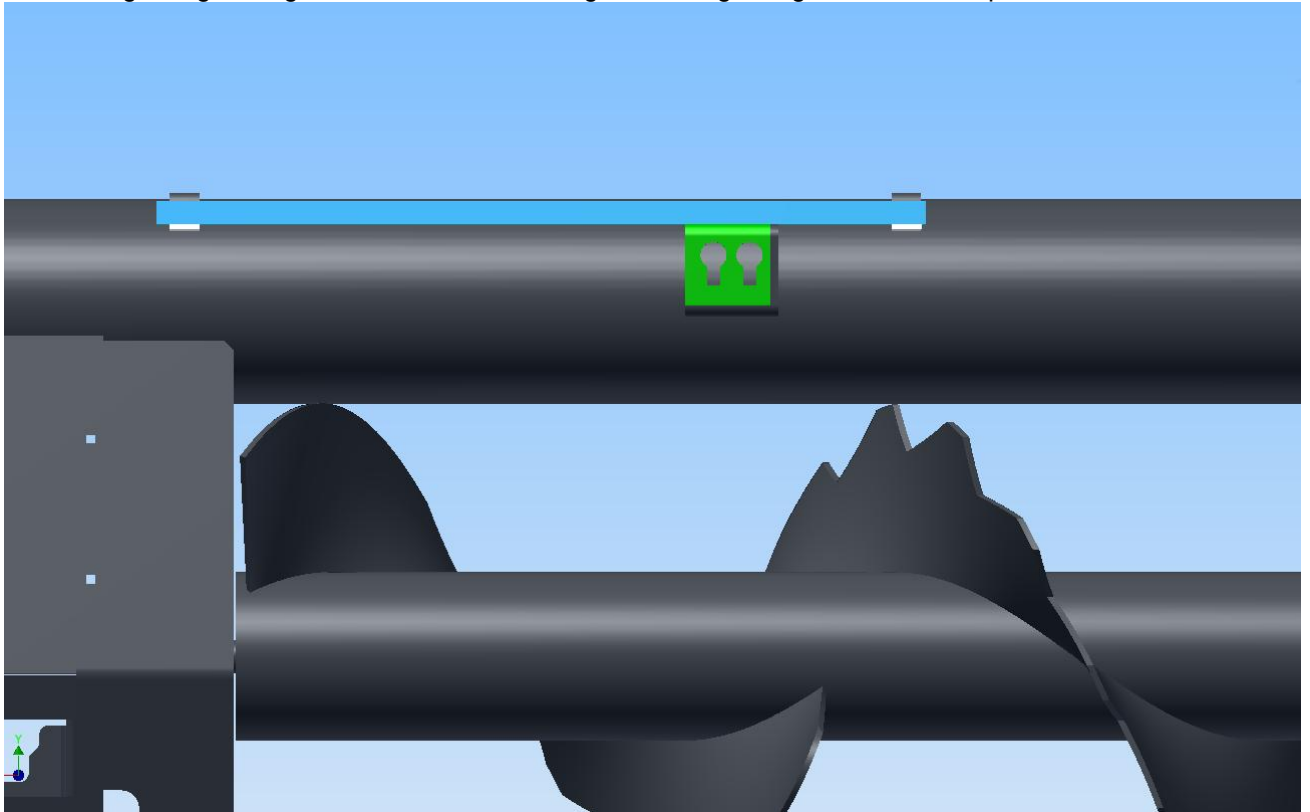


FIGURE 8 STRAIGHT EDGE ON LINES FOR TOP OF THE MOUNT BRACKET

- 11) Place the center mount against the lower edge of the straight edge with the right end lined up on the A mark. Tack weld in place
- 12) Prime and paint the bracket AGCO chassis gray AGCO part number 79033129 (aerosol).

4.4. CENTER MOUNT INSTALL

- 13) Start installation on the center, install the complete right hand auger, and then start to work towards the left auger. Lower header to lowest position – saves a lot of climbing ladders. Raise reel to highest position, lock up with the AGCO reel locks on the cylinders, and BEWARE of sharp reel teeth.
- 14) Locate the center mounting plate (408355) and mount it to the center bracket as shown in the picture below. using the M12 x 35 mm Bolt and the M12 nut. Do not final tighten.

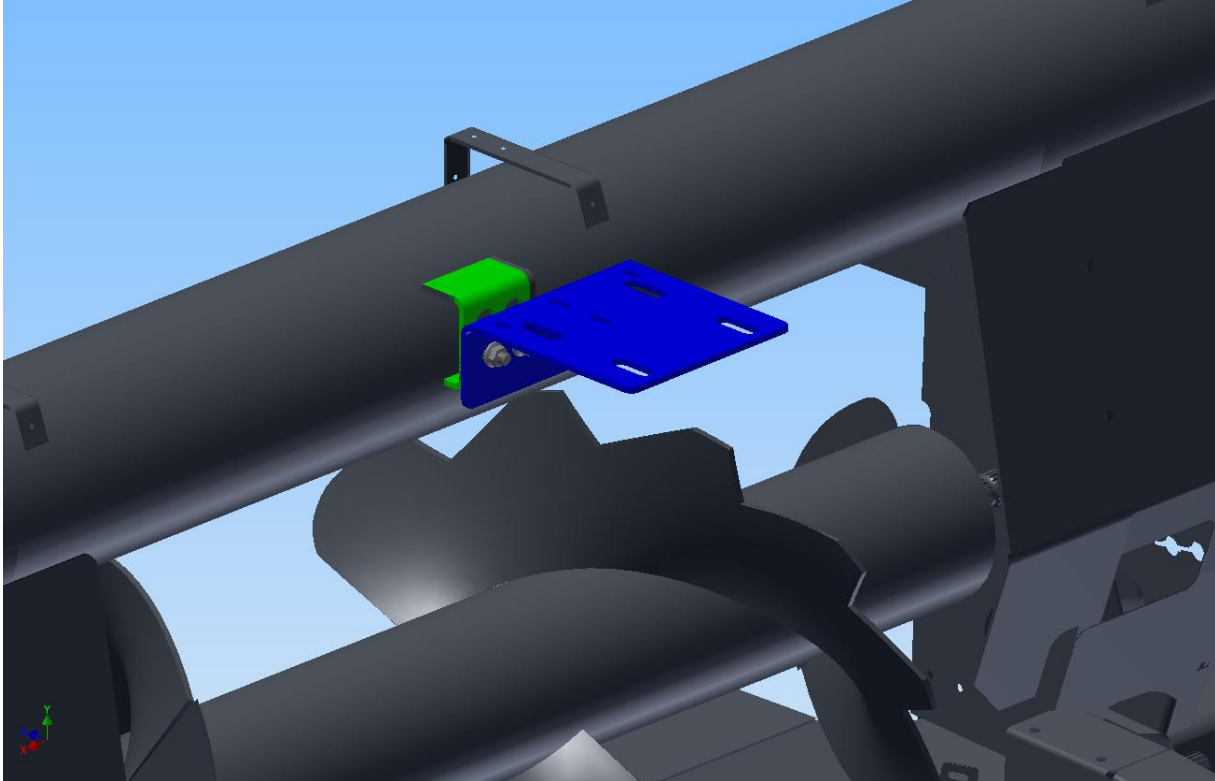
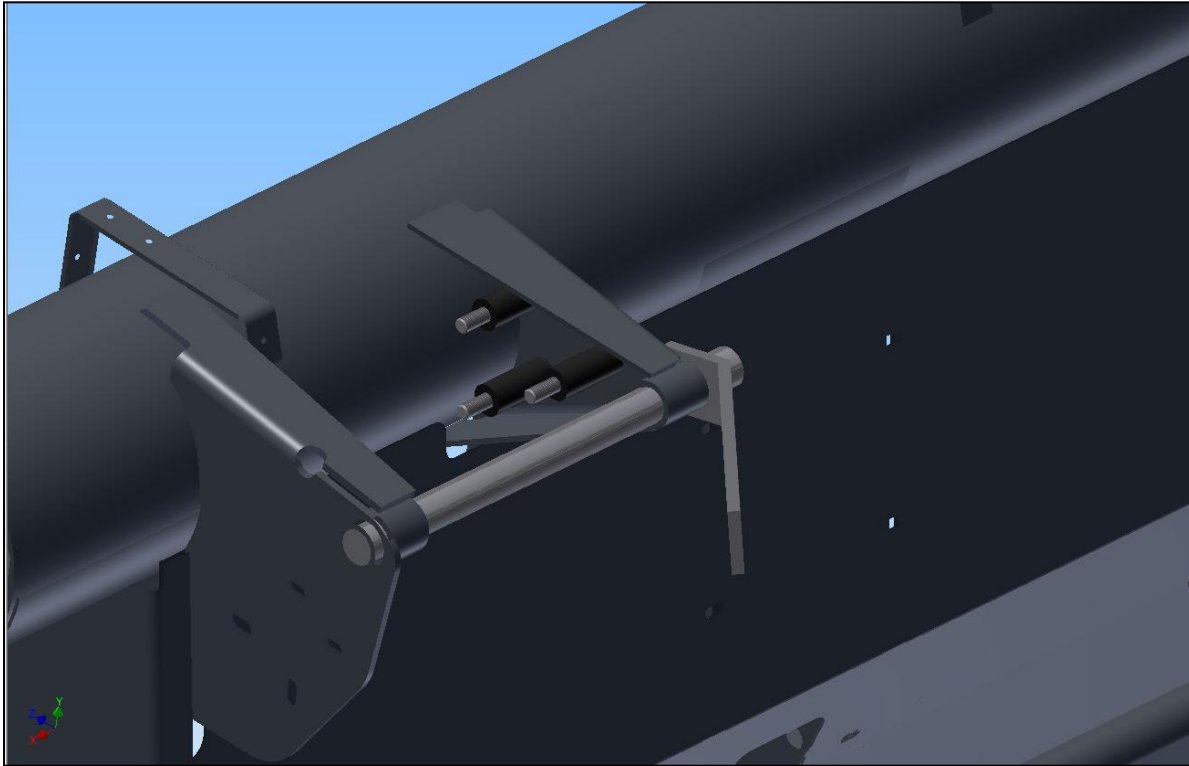


FIGURE 9 INSTALL BLUE CENTER BEARING MOUNT #408355.

- 15) Place 2 pieces of 4 foot long 4 x 4" thick wood pieces onto the right canvas (or 2 shipping pallets). These will prevent damage to the canvas should the auger fall onto the canvas.
- 16) Identify the right hand auger as the one with a single shaft and a flat 4 bolt plate in the motor drive end.
- 17) Assemble the direct drive onto the end of auger.

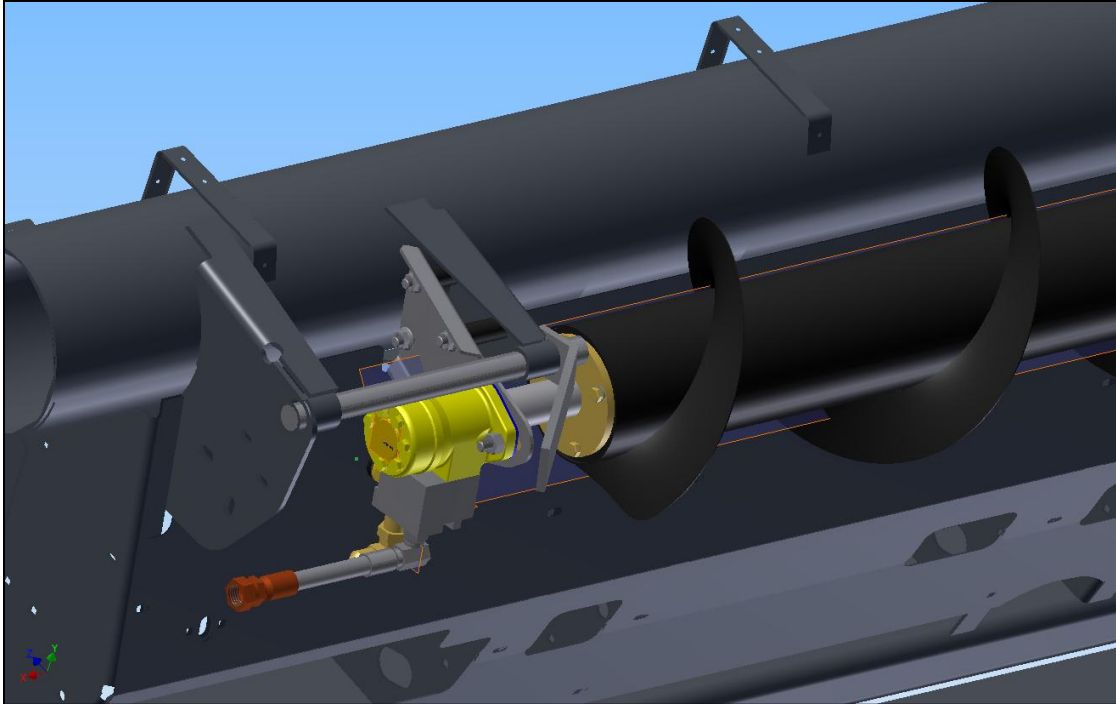
- 18) Install the lock collar, then the bearing onto the shaft end of auger. Leave loose on shaft for now.
- 19) Install 50 tooth sprocket and key on end of shaft. Set flat face of sprocket back 1/16" (1.5 mm) from end of shaft, and final tighten the set screws. The auger is now preassembled- ready to lift into place.
- 20) Locate three spacer bushings (408343) and the M12 x 90 bolts and place them onto the header as shown below.



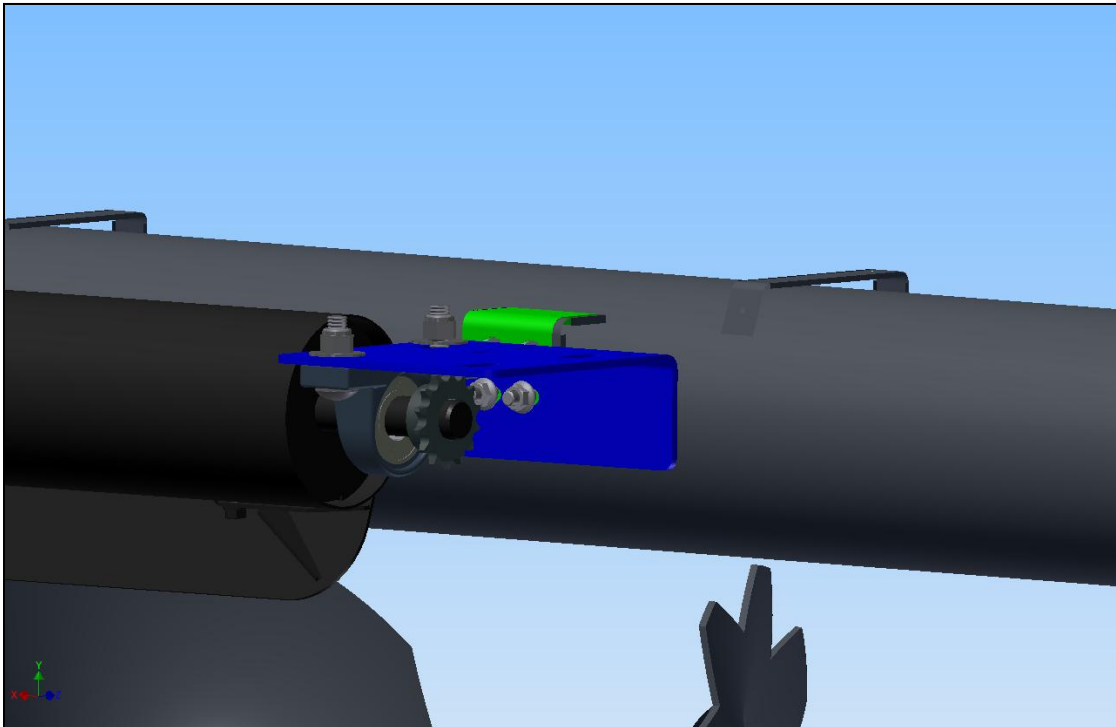
- 21) Lift the auger into place either by hand from the front or with a front end loader /forklift over the rear.
- 22) Set the center end of the auger onto the top of center mount until the drive end of auger is bolted loosely in place.



- 23) Mount the RH auger to the header using the bolts through the spacer bushings as shown below, Place the RH auger end mount onto the three M12 x 90mm bolts and nut – do not final tighten at this time.



- 24) Go to the center and mount the auger to the center plate using the M16 x 60mm carriage bolts and the M16 nuts as shown in the picture below. Make snug but do not final tighten.
- 25) Observe that the flighting of the auger is $\frac{1}{4}$ inch from the back board of the header at both ends. Rotate the auger to check that there is $\frac{1}{4}$ " at all degrees of rotation. Snug the bolts on both ends. Do NOT final tighten – there is probable adjustment to come, and the center plastic cover will be put on later.



4.5. ADJUSTING AUGER HEIGHT

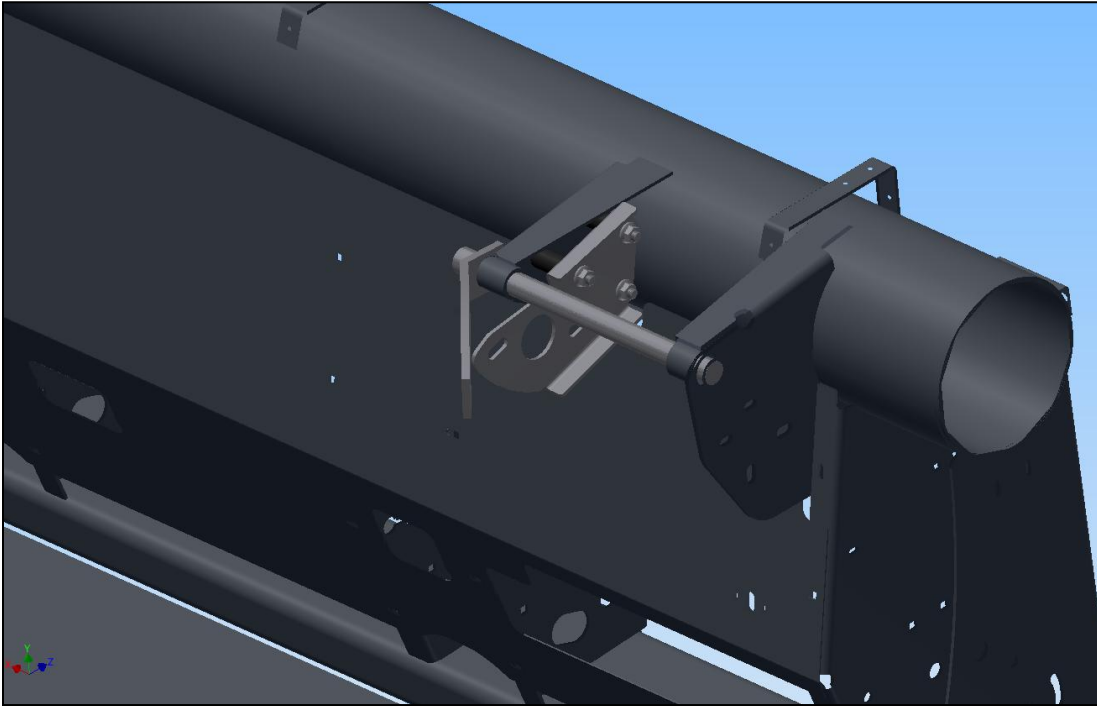
Turn the Ag Shield cross auger until the center paddle is pointed directly to the center of the AGCO feed auger. **Adjust as shown in the photograph (see Figure 10 Adjust until 7.25 inches between 2 augers as shown) to have the center mount rotated around the mainframe to have 7.25 inches between the center hub of feeder auger, and the paddle of the Ag Shield cross auger.** With this correct clearance- the 2 augers run $\frac{1}{4}$ inch apart, the augers don't ruin each other, the augers will run parallel to the mainframe, and provide optimum crop feeding. Check that the bearing mount plate is level from left to right- there should be $\frac{1}{2}$ " space between the auger tube and the side of the center mount. Final tighten the U bolt.



FIGURE 10 ADJUST UNTIL 7.25 INCHES BETWEEN 2 AUGERS AS SHOWN

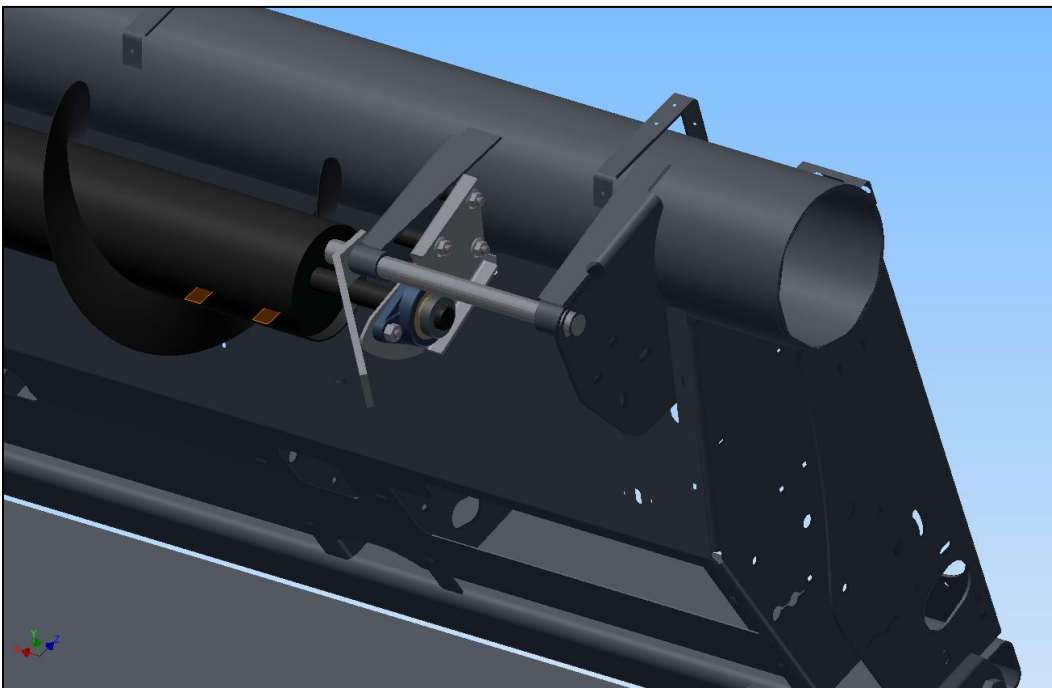
4.6. INSTALL LH END AND AUGER

26) Locate the LH end plate (406511) and mount it to the header using the M12 x 90mm bolts and the spacer bushings.



27) Install left hand mount without the bearing, be sure to have the rear bearing mount bolt in place – as it will be impossible to insert bolt later.

28) Move the 2 pieces of 4" thick wood (pallets) to the right canvas. Lift the auger into place by inserting through the hole at the left end, and bolt under the bearing plate at the right end.



29) Install the outer bearing over the shaft through the hole, do not install lock collar on at this time.

- 30) Observe that the right auger is $\frac{1}{4}$ inch from the frame to the flighting, BUT ALSO lined up to have the chain coupler easily wrapped around the 2 sprockets. Snug both center bearings before installing chain coupler.
- 31) Adjust the left auger until there is about $\frac{5}{16}$ to $\frac{3}{8}$ inch of space between the 2 center sprockets, install the chain coupler by wrapping and turning both augers. **Do not grip the auger to rotate the auger so as to pinch fingers between auger and mainframe.**

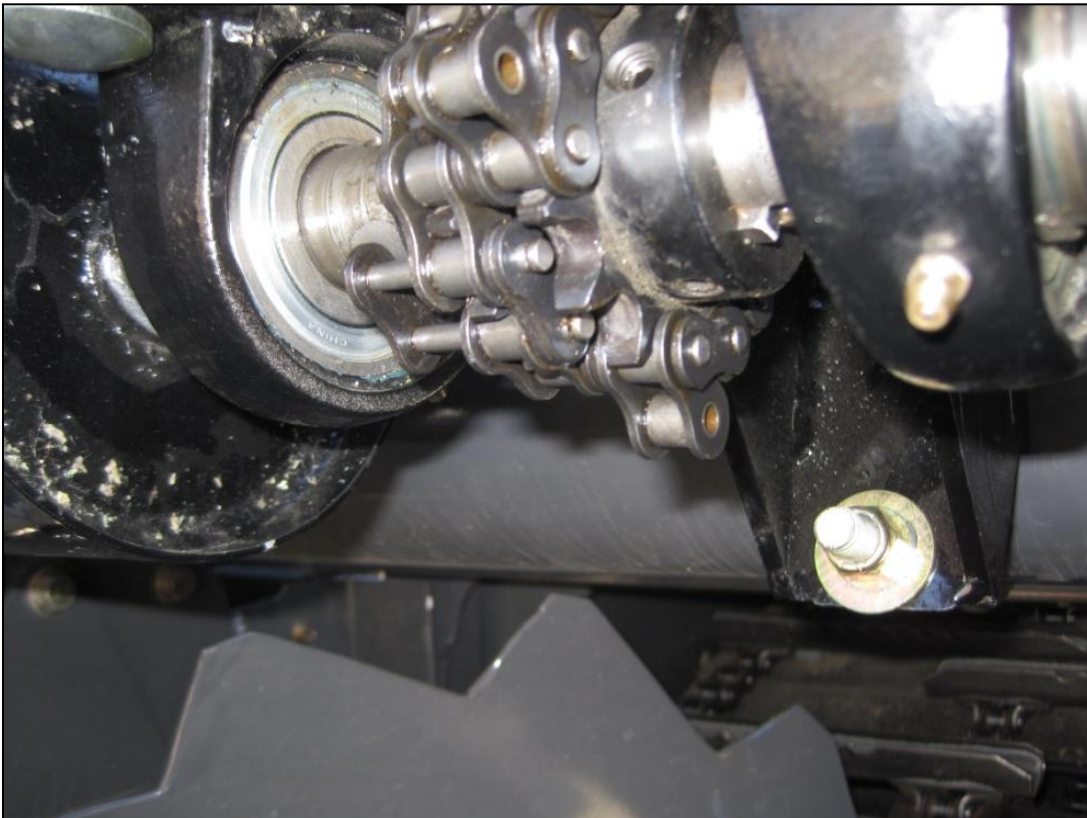
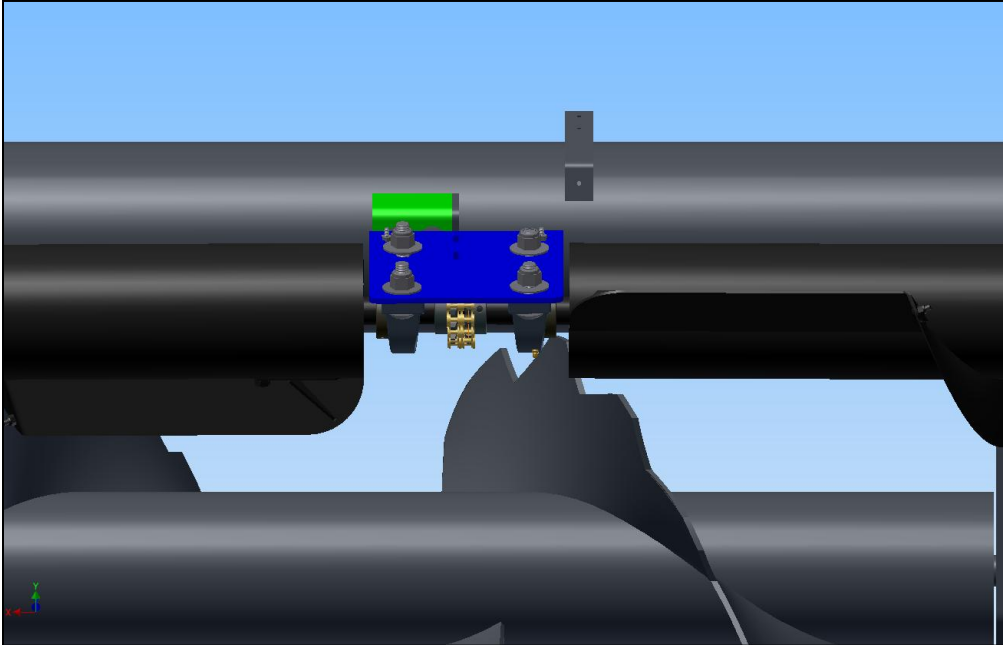


FIGURE 11 INSTALL THE CENTER LINK TO CHAIN COUPLER WITH ONE SIDE BENT OUT OF WAY



FIGURE 13 INSTALL PLASTIC CENTER COVER OVER THE BEARINGS

- 32) Tighten down the left end mount. Install the left end bearing lock collar, final lock the bearing lock collars
- 33) Install plastic center cover over the bearings, place front edge into the space between the bearing flanges, and the center mount. Bring the rear edge and install/ tighten the M16 x 60mm bolts as well as the M6x25mm bolts.
- 34) Final tighten all the bolts, bearing locking collars, set screws, on all locations.
- 35) Remove the pallets and tools.

4.7. HYDRAULICS

- 36) Hook up hydraulic hoses as follows: Remove the outer hose F from the corner of AGCO header at E. Place hose F onto the rear fitting of the Ag Shield auger motor. Install the Ag Shield hose G supplied from the forward fitting of the Ag Shield motor onto the E fitting at rear corner of header.
- 37) Close the motor speed adjust screw H by turning clockwise—do not over tighten, set the lock nut to hold the closed setting. The oil flow available to the motor is the same flow that is going to the reel motor- If the reel is running very slowly – **then it is impossible for the auger motor to run fast with the present oil supply set up.** If this oil supply is not acceptable in your field conditions, a different (and more expensive) method of bring oil to the motor can be purchased. Ag Shield Part# 408360 is a pressure compensated flow control kit to maintain constant pressure to the Ag Shield hydraulic motor. This kit will only maintain the speed determined by the oil flow to the reel motor.

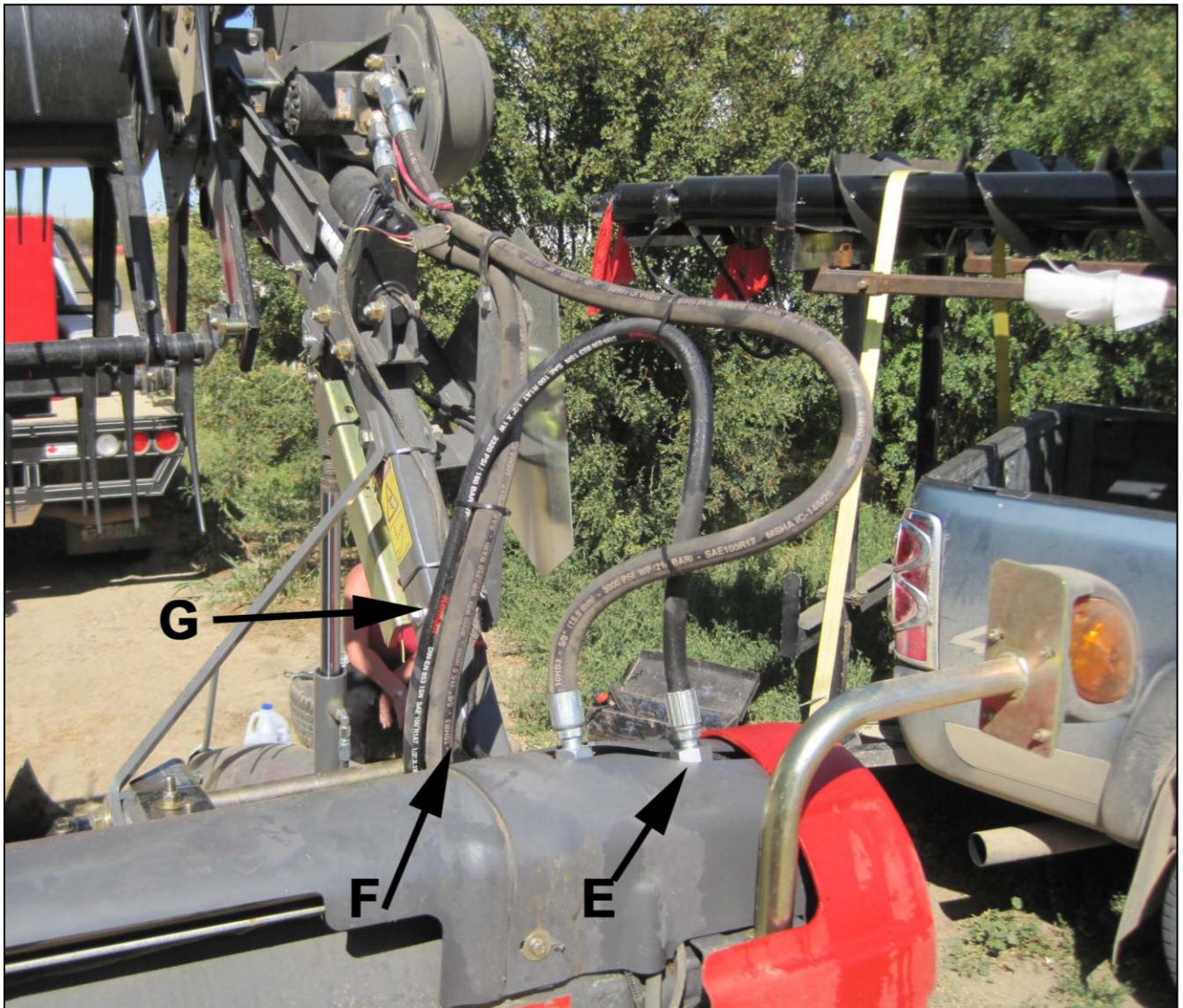


FIGURE 12 HYDRAULIC HOSE POSITIONS

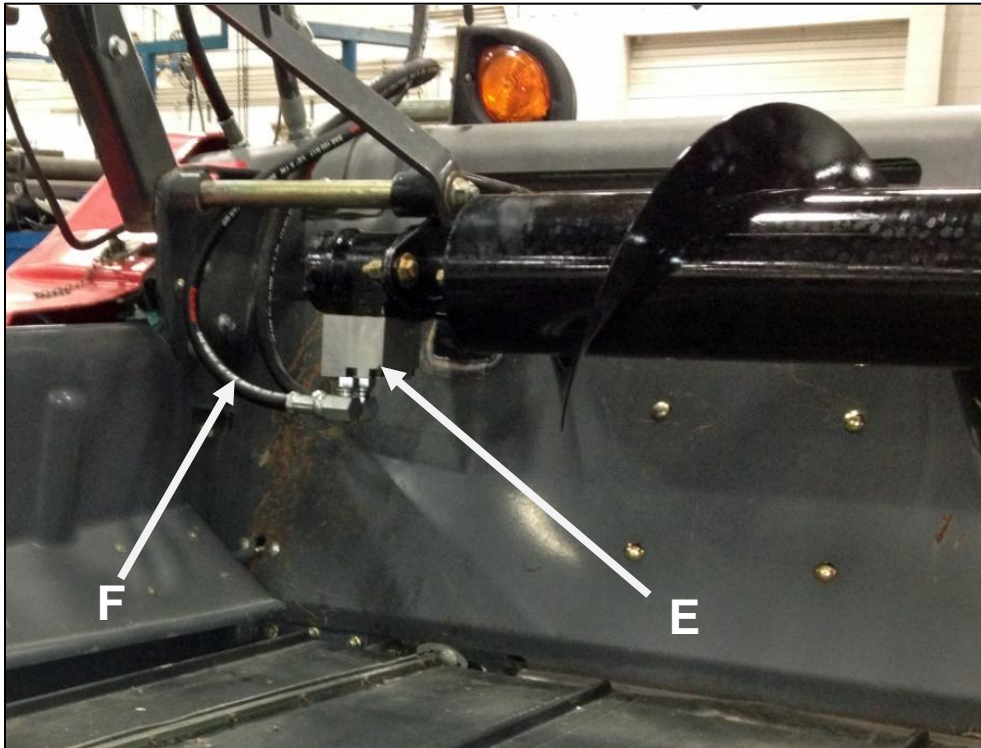


FIGURE 12 HYDRAULIC HOSE INSTALLATION

Refer to figure12 to see the hydraulic hoses in final position.
Turn dial on motor speed control to have changes in auger speed.



Figure 134 Motor speed adjustment

38) Start the combine – bumper the header on and off quickly. If no interference, then run the header and reel at full rpm to prove that it is clearing the backboard at high speed.

4.8. STRIPPER BAR INSTALLATION

- 1) All Ag Shield augers now come with a stripper bar to help prevent crop from wrapping on the auger, as well as to provide a cleaner transfer of crop to the center of the header.
- 2) Put the stripper bar on last after the auger has been installed and tested. This will ensure the height of the auger does not change after the stripper bar height has been set.



- 3) Hold stripper bar up to the back board and mark the holes in the middle of the slot (every second hole will be fine)
- 4) A magnet will help hold one end if installing alone.
- 5) Make sure before drilling that the drill will not damage anything behind the back board (hyd fittings hoses etc)
- 6) Drill 3/8" holes in the middle of the slot in the back board.
- 7) Set the stripper bar to be 1/4" below the flighting.
- 8) Tighten the stripper bar to the back board.

5. OPERATIONS



DANGER

Stay clear of auger
whenever it is running

5.1. FIELD SETTING THE CROSS AUGER

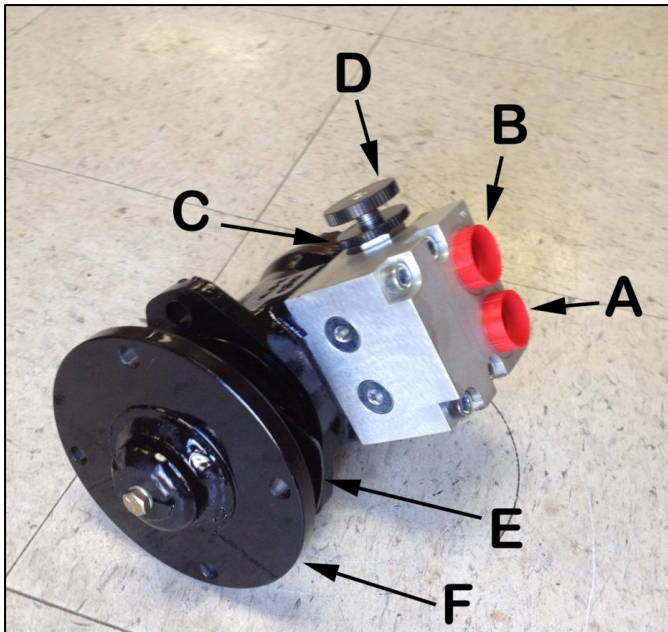


FIGURE 145 SAUER MOTOR WITH SPEED CONTROL

- A: Return or tank line
- B: Pressure line
- C: Lock wheel
- D: Auger speed adjustment
- E: Shim for hydraulic motor mount
- F: Direct driver motor adapter

Cross augers can only be adjusted for speed of rotation. In many conditions, the correct

speed for many crops would be to have the flighting advancing the crop along the canvas 5% or slightly faster than the canvas speed. To increase auger speed, loosen lock wheel C counterclockwise, rotate adjust valve D clockwise, relock the valve by turning C clockwise. Closing this valve reduces the bypass of oil around the hydraulic motor. To slow down the rpm of the auger, rotate adjust valve D counterclockwise.

Observe the auger from the combine cab or swather operating platform. Focus your eye on one auger flighting and compare to a particular canvas slat. The auger can be adjusted to run at the same rate in feet per minute. As desired, slightly increase the cross auger to have it pulling ahead faster than the canvas.

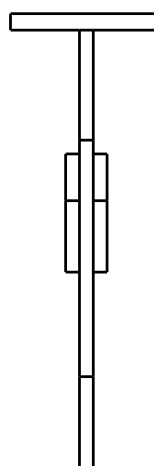
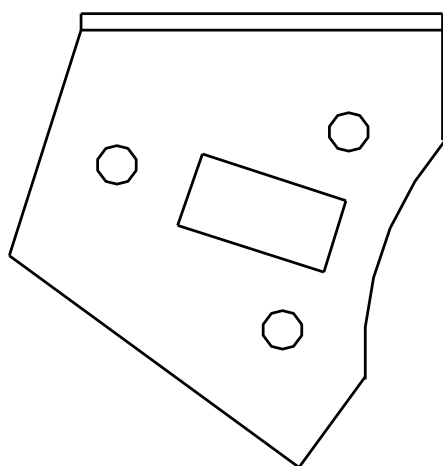
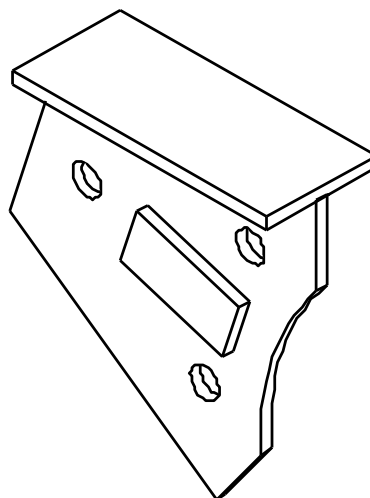
In peas, augers can often be operated at a very slow speed--- 30% of canvas speed, and still feed as much crop into combine. When augers turn slower, there are fewer tendencies to wrap.

If wrapping occurs at the center of the header, try removing one or both of the bolt on paddles – In some conditions the paddles are an advantage, in some conditions the paddles are a disadvantage.

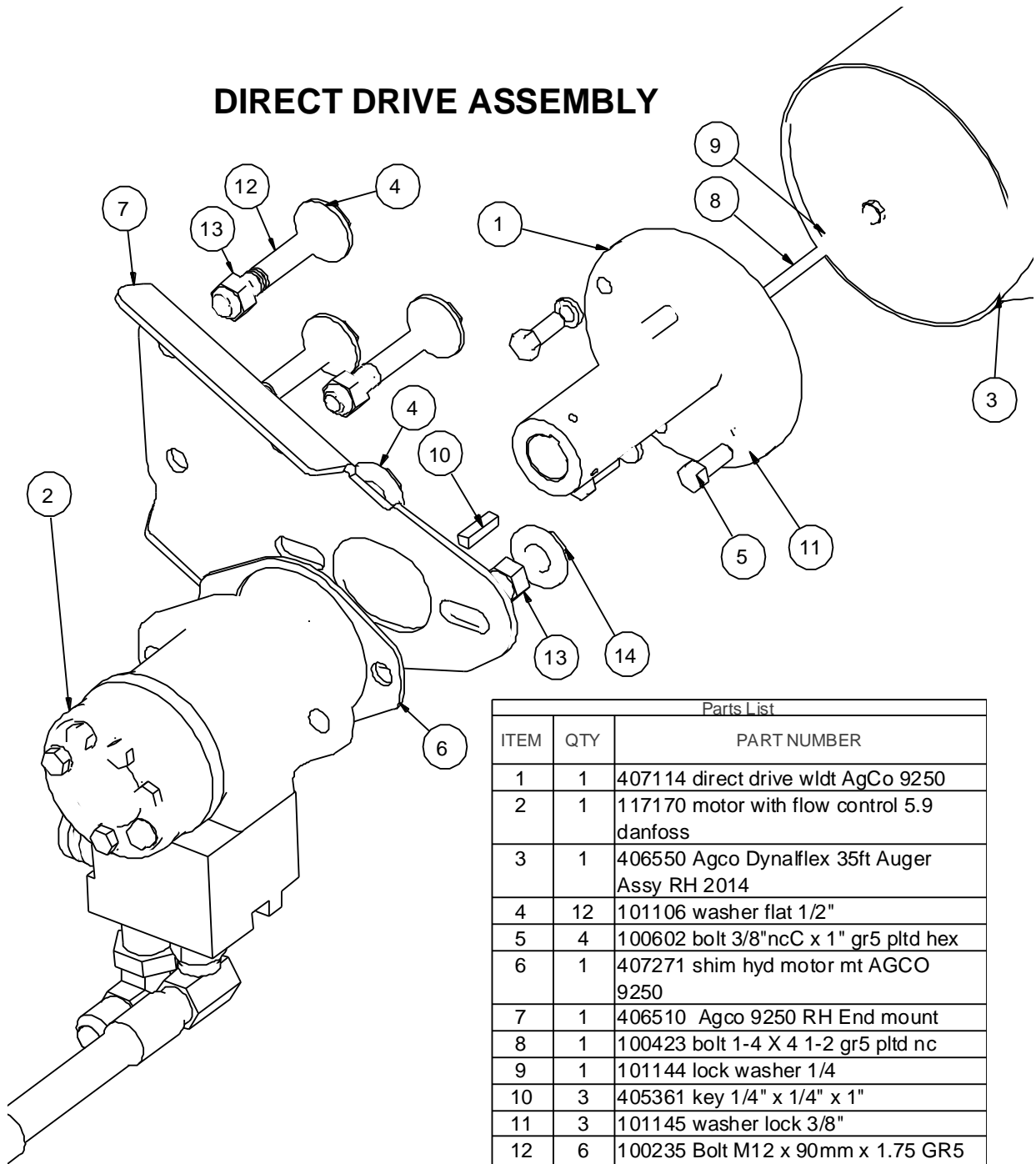
6. Cross Auger Parts all models 9250

AGCO 9250 TEMPLATE FOR END MOUNT HOLES

THIS PART WILL BE PAINTED BLACK
DO NOT USE THIS PICTURE AS A TEMPLATE
IF YOU DO NOT HAVE THE TEMPLATE
PLEASE CONTACT AG SHIELD



6.1. DIRECT DRIVE ASSEMBLY

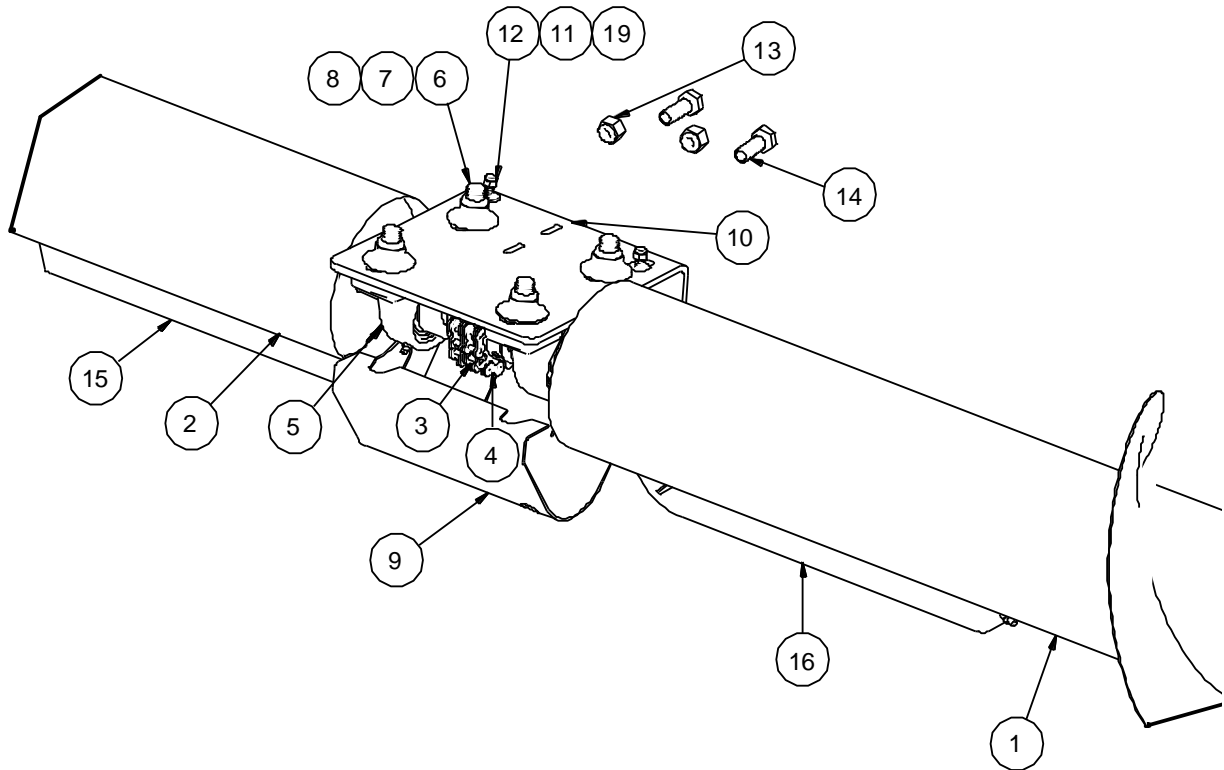


DIRECT DRIVE ASSEMBLY

| Parts List | | |
|------------|-----|--|
| ITEM | QTY | PART NUMBER |
| 1 | 1 | 407114 direct drive wldt AgCo 9250 |
| 2 | 1 | 117170 motor with flow control 5.9 danfoss |
| 3 | 1 | 406550 Agco Dynaflex 35ft Auger Assy RH 2014 |
| 4 | 12 | 101106 washer flat 1/2" |
| 5 | 4 | 100602 bolt 3/8"ncC x 1" gr5 pltd hex |
| 6 | 1 | 407271 shim hyd motor mt AGCO 9250 |
| 7 | 1 | 406510 Agco 9250 RH End mount |
| 8 | 1 | 100423 bolt 1-4 X 4 1-2 gr5 pltd nc |
| 9 | 1 | 101144 lock washer 1/4 |
| 10 | 3 | 405361 key 1/4" x 1/4" x 1" |
| 11 | 3 | 101145 washer lock 3/8" |
| 12 | 6 | 100235 Bolt M12 x 90mm x 1.75 GR5 pltd Hex |
| 13 | 12 | 100229 M12-1.75 Nylock Nut |
| 14 | 2 | 100236 Bolt M12 x 1.75 x 50mm GR8 pltd Hex |

6.2. CENTER MOUNT AGCO 9250 ALL MODELS

2014 Agco 9250 Center Mount

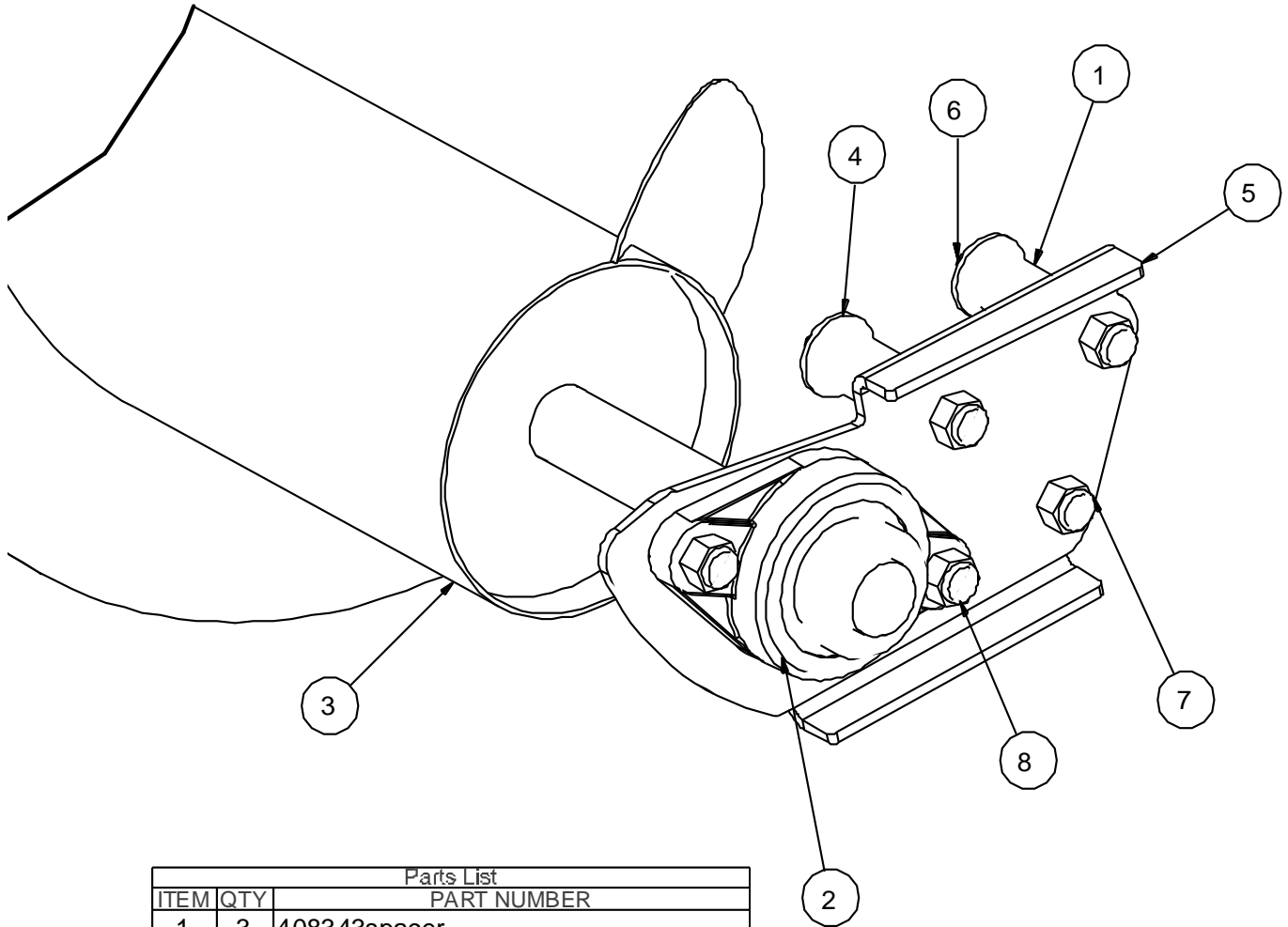


| ITEM | QTY | PART NUMBER | ITEM | QTY | PART NUMBER |
|------|-----|---|------|-----|---|
| 1 | 1 | 407034 Agco Dynalflex 40ft Auger Assy LH | 9 | 1 | 406464 plastic cover center AgCo9250 807 slit |
| 2 | 1 | 408351 Agco Dynalflex 40ft Auger Assy RH 2012 | 10 | 1 | 408355 PLATE BRG MT CENTER agco 9250 2014 |
| 3 | 2 | 114468 chain coupler 1-1/4" ID | 11 | 2 | 100241 Bolt M6-1.00 x 25mm Gr5 pltd Hex |
| 4 | 1 | 114469 chain 50 2R for chain coupler | 12 | 2 | 100225 Nut M6-1 Nylock |
| 5 | 2 | 114471 Pillow Block Bearing Assy P207-SA207 | 13 | 2 | 100229 M12-1.75 Nylock Nut |
| 6 | 4 | 100238 carriage bolt M16 x 2.00 x 60mm | 14 | 2 | 100230 Bolt M12-1.75 x 35mm gr 8 pltd Hex |
| 7 | 4 | 100228 M16 x 2.00 nylock | 15 | 1 | 405725 flap bolt on wldt 3in RH |
| 8 | 4 | 101107 washer flat 5/8" | 16 | 1 | 405726 flap bolt on wldt 3in LH |

| Header model | Kit # | LH Auger | RH Auger |
|--------------|--------|----------|----------|
| 30 ft | 406501 | 407143 | 405829 |
| 35 ft | 406502 | 406449 | 406550 |
| 40 ft | 406503 | 407034 | 408351 |

6.3. LEFT END AGCO 9250 ALL MODELS

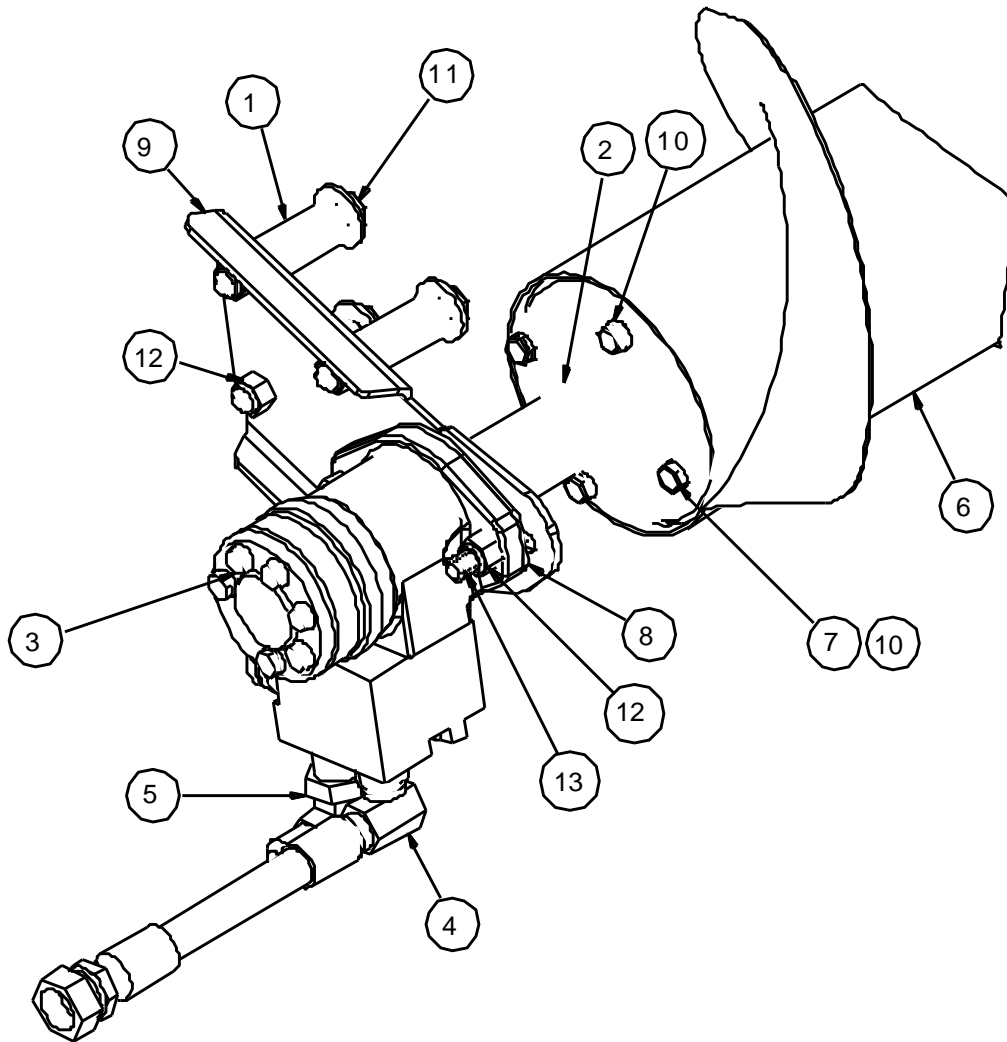
2014 Agco 9250 LH mount



| Parts List | | |
|------------|-----|--|
| ITEM | QTY | PART NUMBER |
| 1 | 3 | 408343spacer |
| 2 | 1 | 114483 Bearing 1.25 in FL207 2 bolt flat flg |
| 3 | 1 | 406449 Agco Dynaflex 35ft Auger Assy LH |
| 4 | 12 | 101106 washer flat 1/2" |
| 5 | 1 | 406511 Agco 9250 LH End mount |
| 6 | 6 | 100235 Bolt M12 x 90mm x 1.75 GR5 ptd Hex |
| 7 | 12 | 100229 M12-1.75 Nylock Nut |
| 8 | 4 | 100230 Bolt M12-1.75 x 35mm gr 8 ptd Hex |

6.4. RH MOUNT AGCO 9250 – ALL MODELS

2014 Agco 9250 RH mount



| ITEM | QTY | PART NUMBER | ITEM | QTY | PART NUMBER |
|------|-----|---|------|-----|--|
| 1 | 3 | 408343spacer | 8 | 1 | 407271 shim hyd motor mt AGCO 9250 |
| 2 | 1 | 407114 direct drive wldt AgCo 9250 | 9 | 1 | 406510 Agco 9250 RH End mount |
| 3 | 1 | 117170 motor with flow control 5.9 danfoss | 10 | 1 | 101145 lock washer 3/8" |
| 4 | 1 | 118869 hose 08 x 49 12FJIC x 90 deg 10MORB | 11 | 6 | 100235 Bolt M12 x 90mm x 1.75 GR5 pltd Hex |
| 5 | 1 | 117956 adapter 90 deg 12 mjic x 10 morb | 12 | 12 | 100229 M12-1.75 Nylock Nut |
| 6 | 1 | 406550 Agco Dynalflex 35ft Auger Assy RH 2014 | 13 | 2 | 100236 Bolt M12 x 1.75 x 50mm GR8 pltd Hex |
| 7 | 4 | 100602 bolt 3/8"ncC x 1" gr5 pltd hex | | | |

7. WARRANTY

1. Ag Shield Manufacturing warrants each new Ag Shield cross auger to be free from factory defects in material and workmanship under normal use and service, when set up and operated in accordance with factory instructions for one year from the date of delivery to the original purchaser.
2. Ag Shield's obligation under this warranty is limited to the supplying of replacement parts which are defective due to factory workmanship or material.
3. Your Ag Shield Dealer is responsible for providing warranty labour. Credit for required labour is specifically agreed to on an individual case basis.
4. The warranty is void on any unit which has been tampered with, or modified in any way not authorized in writing by the factory.
5. This warranty is void on any unit which is subject to misuse, negligence or accident, or which has had the serial number tampered or removed.
6. A "Warranty Claim Form" (sample at end of handbook) must be submitted to Ag Shield with returned parts in order for parts to be considered for warranty examination.
7. A warranty registration page from the front of this manual must be returned to the factory in order to qualify for warranty examination.
8. All returned parts must be sent to the factory freight prepaid, and warranty parts will be returned to you freight collect.
9. Replacement parts shipped pending receipt of parts for examination will be invoiced, and remain on your account until such time as examination indicates that a credit for those parts be issued or that payment is due.
10. Parts not returned for warranty examination within 30 days must be paid for at that time. Ag Shield will immediately reimburse any cash paid for items that are later determined defective.
11. Warranty terms and conditions are subject to provincial and state legislation.

WARRANTY CLAIM FORM

Ag Shield Mfg
 Box 9, Benito,
 MB, R0L 0C0
 ph 800-561-0132
 fax 204-539-2130
 ph 204-539-2000i

| | | | | | |
|---------|----------------|------------|----------|----------------|------------|
| Dealer | | | End User | | |
| Address | | | Address | | |
| City | State/Province | Zip/Postal | City | State/Province | Zip/Postal |

| | | | | | |
|--------------|-------------|---------------|---|-------|---------------|
| DATE OF SALE | DATE FAILED | REPAIR DATE | ACRES/HOURS | MODEL | SERIAL NUMBER |
| LABOUR HOURS | LABOUR RATE | LABOUR AMOUNT | PARTS MUST BE RETURNED TO BENITO MB FREIGHT PREPAID TO BE CONSIDERED FOR WARRANTY. DATE SHIPPED | | |

| QUANTITY ITEM | PART NUMBER | DESCRIPTION | PRICE EACH | TOTAL PRICE | DESCRIBE THE CAUSE OF FAILURE AND CORRECTIVE ACTION TAKEN | APPROVE /REJECT |
|------------------|----------------|-------------|---------------|----------------|--|--------------------|
| 1 | | | | | | |
| 2 | | | | | | |
| 3 | | | | | | |
| 4 | | | | | | |
| 5 | | | | | | |
| 6 | | | | | | |
| 7 | | | | | | |
| 8 | | | | | | |

| | | | |
|--|--------|--------------------|---------|
| I CERTIFY THAT THE INFORMATION IS ACCURATE AND THAT THE PARTS WERE REPLACED ON THE MACHINE | PARTS | DATE PARTS RECD | RECD BY |
| | LABOUR | ITEMS TO SUPPLIERS | |
| | TOTAL | | |

SHADED AREAS AG SHIELD USE ONLY ---PLEASE ADD DETAILS FOR ITEM NUMBERS ON BACK

