

AG SHIELD



**12" Cross Auger for AGCO Massey
5000--5200 models:25- (ASM# 405795) 30
foot (ASM # 405796) and 36 foot (# 405797)
Headers---- Direct drive AGCO 5300 25foot
(#405860) 30 ft(#405861) 35ft(#405862)
40ft(#405863)**

OPERATOR'S HANDBOOK AND PARTS MANUAL

Ag Shield Manufacturing
Box 9, Benito, Manitoba R0L 0C0
Phone 800-561-0132 or 204-539-2000
Fax 204-539-2130
Email address: sales@agshield.com
Web site at <http://www.agshield.com>

Printed in Canada

June 26, 2016

Rev 2

-Part No 405909

1. TABLE OF CONTENTS

1.	TABLE OF CONTENTS	3
2.	INTRODUCTION AND SIGN-OFF FORM	4
3.	SAFETY	5
3.1.	SAFETY OVERVIEW	6
3.2.	GENERAL SAFETY	6
3.3.	MAINTENANCE SAFETY	7
3.4.	HYDRAULIC SAFETY	7
3.5.	SHEAR SAFETY	7
3.6.	STORAGE SAFETY	7
3.7.	TRANSPORT SAFETY	7
3.8.	REFUELING SAFETY	8
3.9.	TIRE SAFETY	8
3.10.	OPERATING SAFETY	8
3.11.	CROSS AUGER SAFETY	8
3.12.	SAFETY DECALS	9
4.	SETUP FROM SHIPPING MODE	10
4.1.	INSTALLATION 30 FOOT AGCO HEADER WITH CROSS AUGER	11
4.2.	INSTALLATION 36 FOOT AGCO HEADER WITH CROSS AUGER	22
4.3.	405795 25 FT CENTER BEARING MOUNT VIEW	23
4.4.	STRIPPER BAR INSTALLATION	30
5.	OPERATIONS	31
5.1.	FIELD SETTING THE CROSS AUGER	31
6.	CROSS AUGER PARTS FOR AGCO MF 5000 AND 5200 HEADERS	32
6.1.	RIGHT HAND END MOUNT AGCO 30 AND 36 FOOT	32
6.2.	CENTER MOUNT AGCO 30 FOOT	33
6.3.	LEFT END BEARING MOUNT AGCO 5000/5200 30 AND 36 FOOT	34
6.4.	CENTER MOUNT AGCO 36 FOOT BOLT ON	35
7.	WARRANTY	39

3. SAFETY

SAFETY ALERT SYMBOL

This Safety Alert symbol means:
ATTENTION! BECOME ALERT!
YOUR SAFETY IS INVOLVED!

The Safety Alert symbol identifies important safety messages on the Ag Shield Cross auger and in the manual. When you see this symbol, be alert to the possibility of personal injury or death. Follow the instructions in the safety message.



3 Big Reasons

Accidents Disable and Kill
Accidents Cost
Accidents Can Be Avoided

SIGNAL WORDS:

Note the use of the signal words **DANGER**, **WARNING** and **CAUTION** with the safety messages. The appropriate signal word for each message has been selected using the following guide-lines:

- DANGER** - An immediate and specific hazard which **WILL** result in severe personal injury or death if the proper precautions are not taken.
- WARNING** - A specific hazard or unsafe practice which **COULD** result in severe personal injury or death if proper precautions are not taken.
- CAUTION** - Unsafe practices which **COULD** result in personal injury if proper practices are not taken, or as a reminder of good safety practices.

3.1. SAFETY OVERVIEW

YOU are responsible for the **SAFE** operation and maintenance of your Ag Shield Cross auger. **YOU** must ensure that you and anyone else who is going to operate, maintain or work around the canola pusher be familiar with the operating and maintenance procedures and related **SAFETY** information contained in this manual. This manual will take you step-by-step through your working day and alerts you to all good safety practices that should be adhered to while operating the canola pusher.

Remember, **YOU** are the key to safety. Good safety practices not only protect you but also the people around you. Make these practices a working part of your safety program. Be certain that **EVERYONE** operating this equipment is familiar with the recommended operating and maintenance procedures and follows all the safety precautions. Most accidents can be prevented. Do not risk injury or death by ignoring good safety practices.

- Cross auger owners must give operating instructions to operators or employees before allowing them to operate the Cross auger, and at least annually thereafter per OSHA regulation 1928.57.
- The most important safety device on this equipment is a **SAFE** operator. It is the operator's responsibility to read and understand **ALL** Safety and Operating instructions in the manual and to follow these. All accidents can be avoided.
- A person who has not read and understood all operating and safety instructions is not qualified to operate the machine. An untrained operator exposes himself and bystanders to possible serious injury or death.
- Do not modify the equipment in any way. Unauthorized modification may impair the function and/or safety and could affect the life of the equipment.
- Think SAFETY! Work SAFELY!

3.2. GENERAL SAFETY

1. Read and understand the Operator's Manual and all safety signs before operating, maintaining, adjusting the Cross auger.
2. Only trained competent persons shall operate the cross auger. An untrained operator is not qualified to operate the machine.



3. Have a first-aid kit available for use should the need arise and know how to use it.

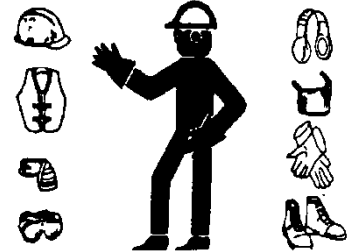


4. Have a fire extinguisher available for use should the need arise and know how to use it.



5. Do not allow riders.

6. Wear appropriate protective gear. This list includes but is not limited to:



- A hard hat
 - Protective shoes with slip resistant soles
 - Protective glasses or goggles
 - Heavy gloves
 - Hearing protection
7. Stop the engine, place all controls in neutral, set park brake, remove ignition key and wait for all moving parts to stop before servicing, adjusting, repairing or unplugging.
 8. Review safety related items with all personnel.

3.3. MAINTENANCE SAFETY

1. Review the Operators Manual and all safety items before working with, maintaining or operating the Cross auger.
2. Stop the tractor engine, place all controls in neutral, set park brake, remove ignition key, wait for all moving pads to stop before servicing, adjusting, or repairing.
3. Before applying pressure to a hydraulic system, make sure all components are tight and that steel lines, hoses and couplings are not damaged.
4. Relieve pressure from hydraulic circuit before servicing or disconnecting from tractor.
5. Keep hands, feet, clothing and hair away from all moving and/or rotating parts.
6. Clear the area of bystanders, especially children, when carrying out any maintenance and repairs or making any adjustments.
7. Place stands or blocks under the frame before working beneath the machine.

3.4. HYDRAULIC SAFETY

1. Always place all tractor hydraulic controls in neutral before dismounting.
2. Make sure that all components in the hydraulic system are kept in good condition and are clean.
3. Replace any worn, cut, abraded, flattened or crimped hoses and steel lines.
4. Do not attempt any makeshift repairs to the hydraulic lines, fittings or hoses by using tape, clamps or cements. The hydraulic system operates under extremely high-pressure. Such repairs will fail suddenly and create a hazardous and unsafe condition.
5. Wear proper hand and eye protection when searching for a high-pressure hydraulic leak. Use a piece of wood or cardboard as a backstop instead of hands to isolate and identify a leak.
6. If injured by a concentrated high-pressure stream of hydraulic fluid, seek medical attention immediately. Serious infection or toxic reaction can develop from hydraulic fluid piercing the skin surface.

7. Before applying pressure to hydraulic system make sure that all connections are tight and that all hoses and fittings are in good condition.

3.5. SHEAR SAFETY

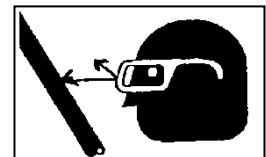
The operator must obey all safety labels.

1. Keep operators and bystanders away from all moving parts.
2. Shut off tractor engine and remove key before coming close to the implement or doing any maintenance
3. Never service or unplug shears while they are running, a single slip and you could be badly hurt or killed.

3.6. STORAGE SAFETY

1. Store unit in an area away from human activity.
2. Do not permit children to play on or around the stored Cross auger.

3.7. TRANSPORT SAFETY



1. Read and understand ALL the information in the Operator's Manual regarding procedures and SAFETY when operating the Cross auger in the field and/or on the road.
2. Check with local authorities regarding machinery transport on public roads. Obey all applicable laws and regulations.
3. Always travel at a safe speed. Use caution when making corners or meeting traffic.
4. Make sure the SMV (Slow Moving Vehicle) emblem and all the lights and reflectors that are required by the local highway and transport authorities are in place, are clean and can be seen clearly by all overtaking and oncoming traffic. Daybreak and dusk are particularly dangerous and pilot vehicles are recommended.

5. Ensure that the trailer is hitched positively to the towing vehicle. Always use a safety chain between the trailer and the tractor.
6. Keep to the right and yield the right-of-way to allow faster traffic to pass. Drive on the road shoulder, if permitted by law.
7. Always use hazard warning flashers on the Cross auger when transporting unless prohibited by law.

3.8. REFUELING SAFETY

1. Handle fuel with care. It is highly flammable.



2. Do not refuel the machine while smoking or when near open flame or sparks.

3. Stop engine before refueling. Clean up spilled fuel before restarting engine.

3.9. TIRE SAFETY

1. Failure to follow proper procedures when mounting a tire on a wheel or rim can produce an explosion, which may result in serious injury or death.
2. Do not attempt to mount a tire unless you have the proper equipment and experience to do the job.
3. Have a qualified tire dealer or repair service perform required tire maintenance.
4. Operate the tires at the pressures, loads, and speeds suggested by the manufacturer.

3.10. OPERATING SAFETY

1. Read and understand the Operator's Manual and all safety signs before using.
2. Stop engine place all controls in neutral, set park brake, remove ignition key, wait for all moving parts to stop before servicing, adjusting, repairing or unplugging.
3. Before conditioning a field, be familiar with all potential hazards: trees, rocks ditches, gullies, etc. Plan your route to avoid hazards. Keep Cross auger width in mind when maneuvering to avoid obstacles.

4. Keep hands, feet, hair and clothing away from all moving and/or rotating parts.
5. Keep all shields and guards in place when operating.
6. Do not allow riders on the Cross auger or tractor during operation or transporting.
7. Clear the area of all bystanders, especially children, before starting.
8. Stay away from machine when folding deflectors. Keep others away.
9. Before applying pressure to the hydraulic system, make sure all components are tight and that steel lines, hoses and couplings are not damaged.
10. Review safety instructions annually

3.11. CROSS AUGER SAFETY

The cross auger has sufficient power to sever limbs and cause serious to fatal injury. Always stop the cross auger before dismounting. Always be certain that no one is in front of combine header Shield before engaging the auger drive.

When greasing the auger, do so with the combine motor shut off and the park brake securely set.

Never attempt to help the crop move along the canvases with a wrench or other item that might get into the auger and draw the wrench holder into the auger.

3.12. SAFETY DECALS

Become familiar with these decals and the hazards they are marking.



part #113522

part #113524



4. Setup from Shipping Mode

Operator's handbook for Ag Shield Cross auger to fit on to a 30 ft AGCO 5000/5200 header

Please note that the colors in the instructions refer to the **manual** colors, **not the actual color** the kit parts are painted

Figure 1 Complete header 30 foot AGCO 5000-5200 Kit # 405796	11
Figure 2 Red Template (ASM #408246) in place against Header rear face (End View)	12
Figure 3 weld on mount directions	13
Figure 4 Left end weld on mount (Top View)	16
Figure 5 Left end weld on mount (End View)	17
Figure 6 Right hand end mount and Drive	17
Figure 7 Right Hand End Mount and Drive (Top View)	18
Figure 8 Center mount 30 foot (Kit # 405796) with plastic cover	18
Figure 9 Install the joiner link into chain coupler with one side bent out of way	19
Figure 10 Center mount 30 ft With Plastic Guard Removed (Front View)	20
Figure 11 Hoses on 30 + 36 ft Agco headers	21
Figure 12 36 foot overall view (Kit #405797)	22
Figure 13 36 foot Center bearing mount bolted to header with Guard removed	22
Figure 14 Sauer Motor speed control	31

4.1. INSTALLATION 30 FOOT AGCO HEADER WITH CROSS AUGER

Installation sequence and dimensions for a 30-36 foot model 5100 header-

1. Bolt the red template to the right hand end auger mount so that the holes are in center of slots on mount. Rotate the mount around the header main frame until the red template touches the back of header. Tack weld on the right hand mount at a position 6.562 or 6 9/16 inches from the right inside end of header, as measured from the outside vertical face of mount to the inside of the header.

See note on template below

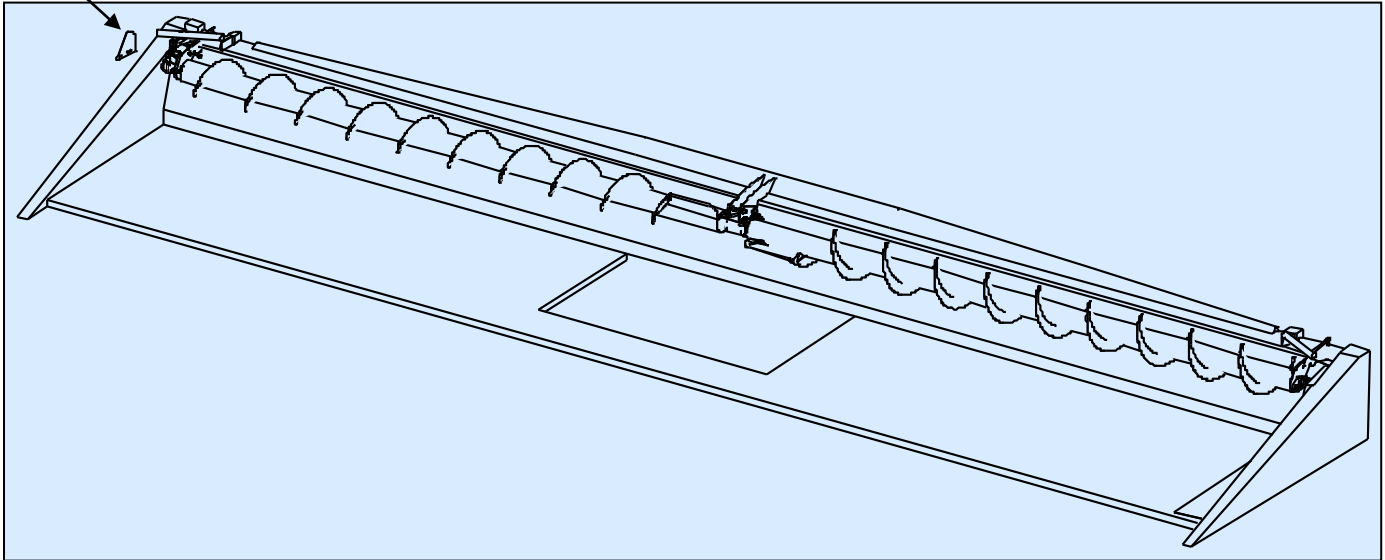
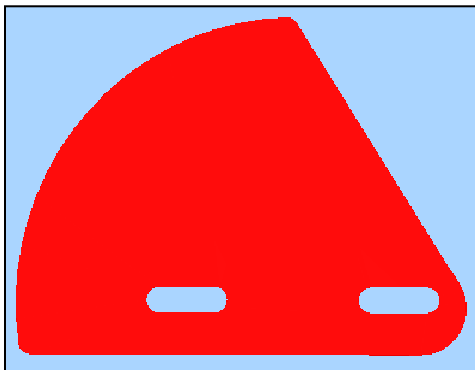


FIGURE 1 COMPLETE HEADER 30 FOOT AGCO 5000-5200 KIT # 405796



NOTE:

Template (ASM # 408246) is provided with Cross Auger Kit's #405796 and #405796) to assist the positioning and welding of the RH and LH end mounts onto the AGCO MF 5000-5200 headers before installing the augers.

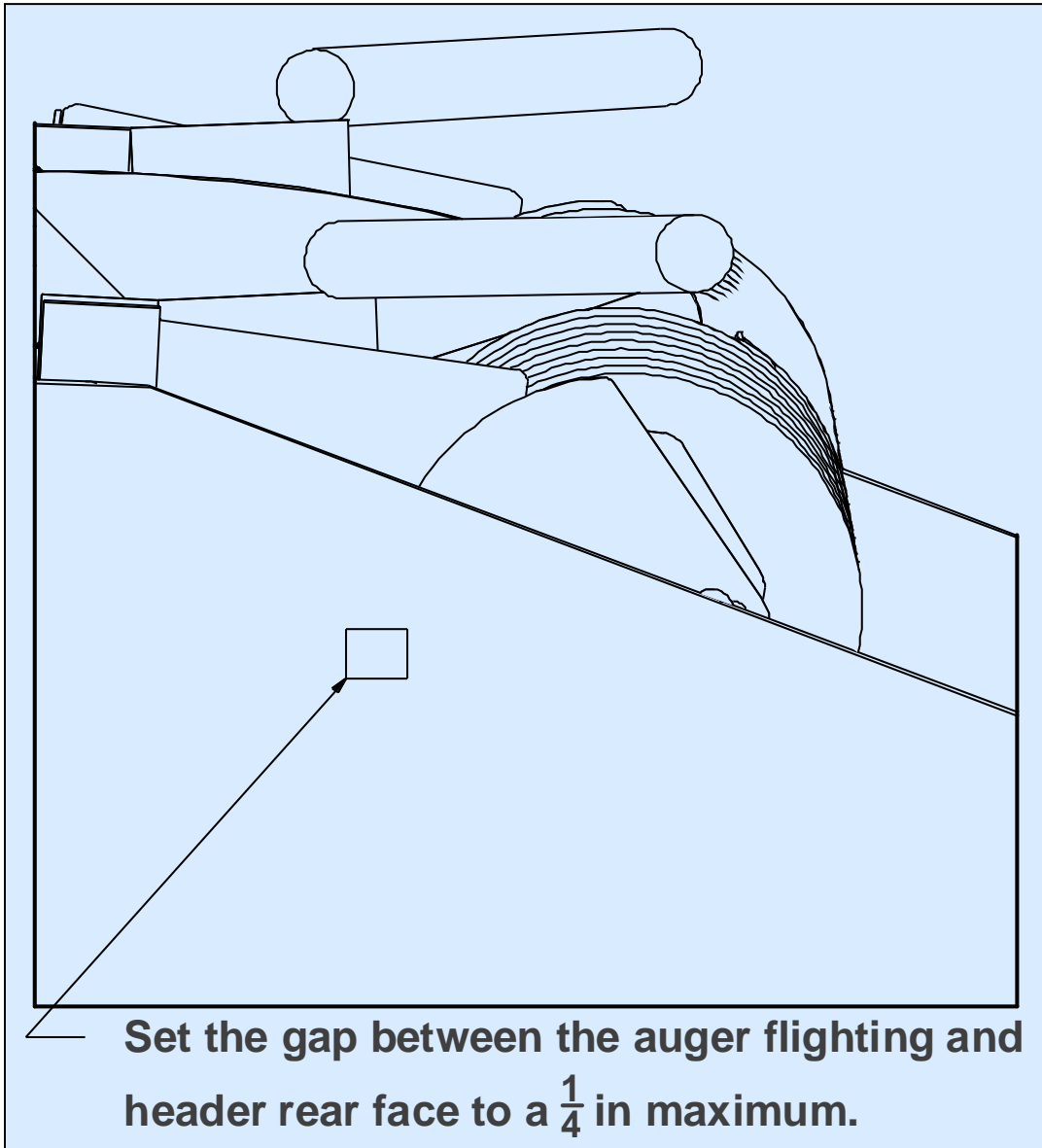


FIGURE 2 RED TEMPLATE (ASM #408246) IN PLACE AGAINST HEADER REAR FACE (END VIEW)

1. See
- 2.
3. Figure 2 Red Template (ASM #408246) in place against Header rear face (End View). Bolt the red template to the left hand end auger mount so that the holes are in the center of the slots of the bearing holder. Rotate the mount around the header main frame until the red template touches the back of header, rotate back 1/4". This determines the rotation around the tube using the template shown on the drawing in bright red-the template simulates the 12" outside diameter of the auger plus 1/4" space. Tack weld on the left end blue mount. The outer vertical face of the blue mount is 5.5 inches from the inside end of the header on 30 ft and 4.8 inches on the 36 foot wide unit. .

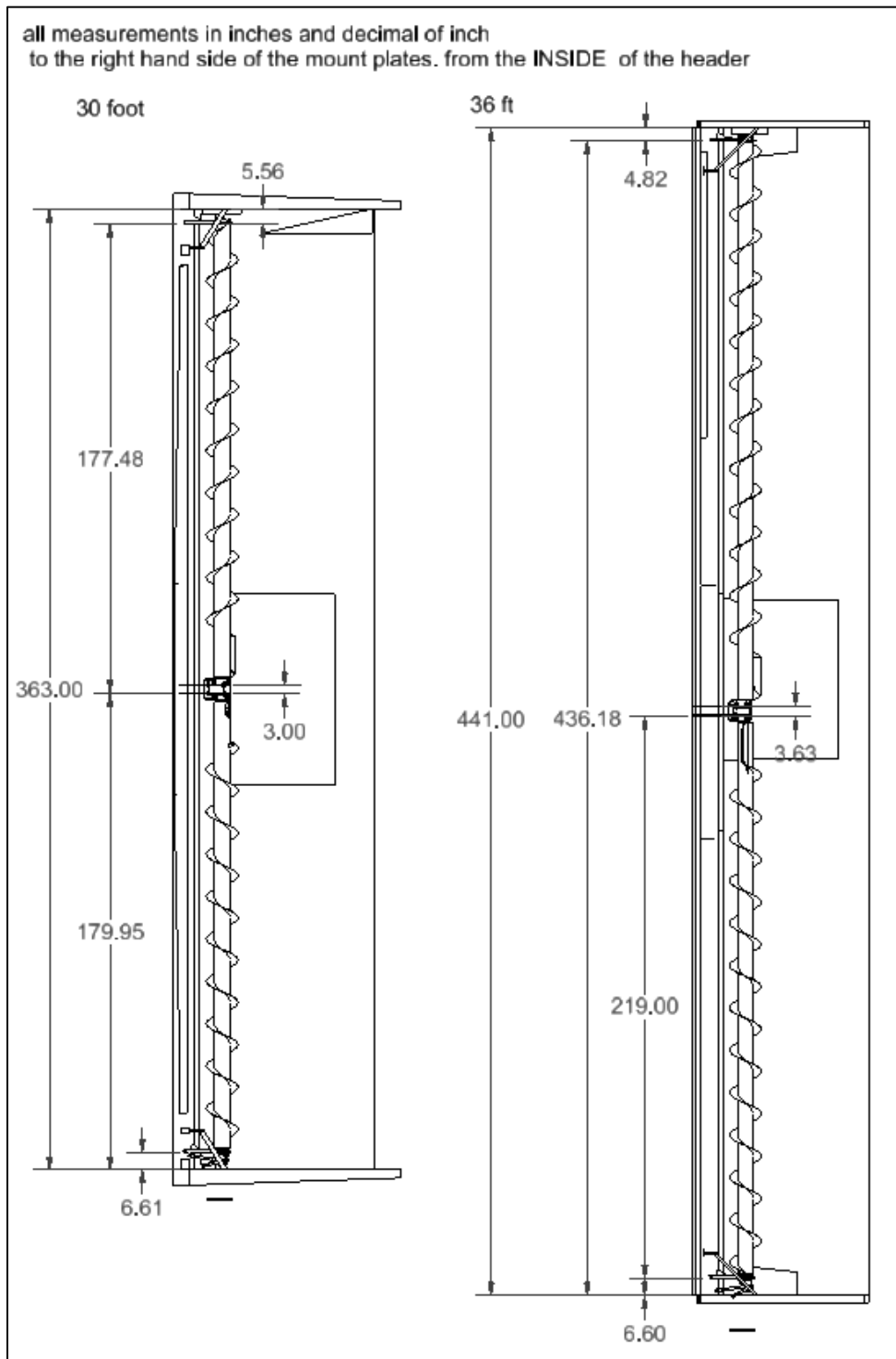
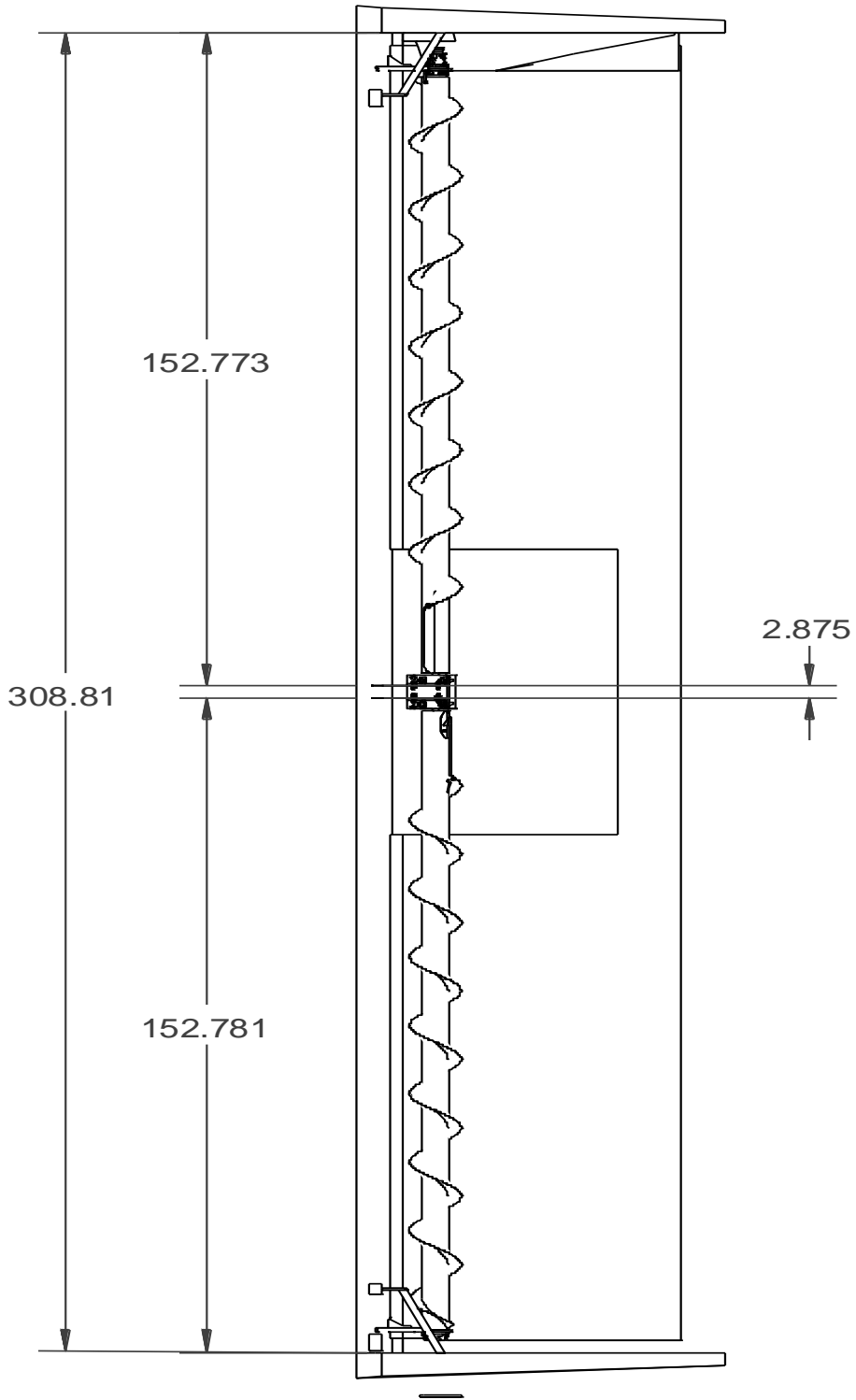


FIGURE 3 WELD ON MOUNT DIRECTIONS

405795 25 ft dimensions



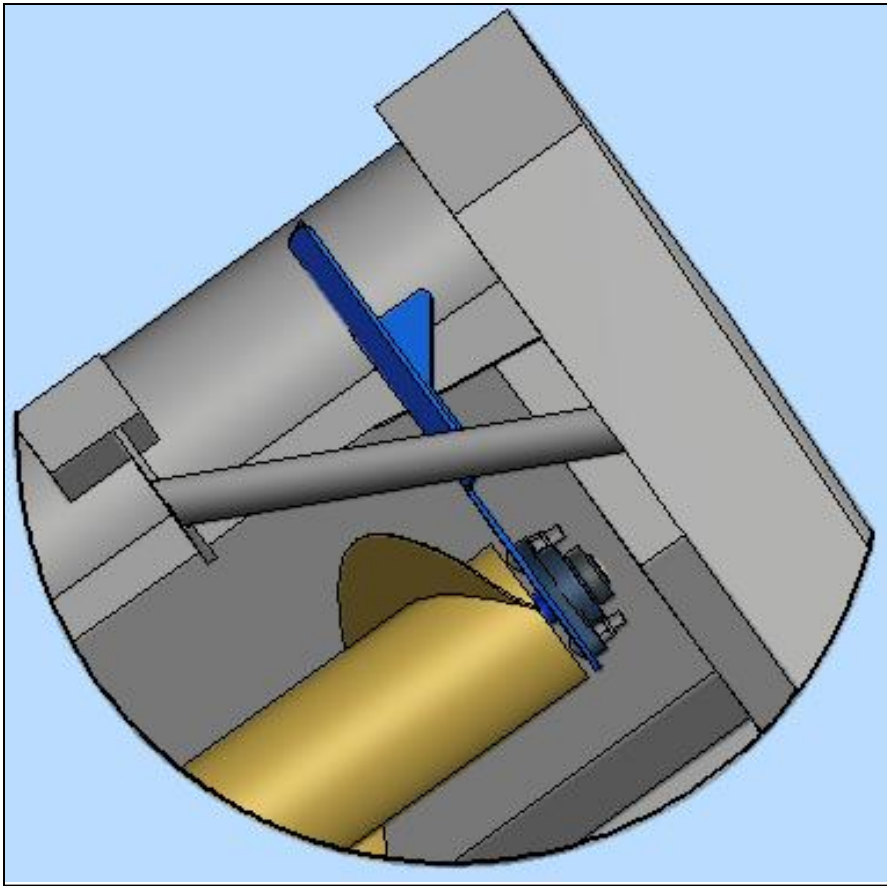


FIGURE 4 LEFT END WELD ON MOUNT (TOP VIEW)

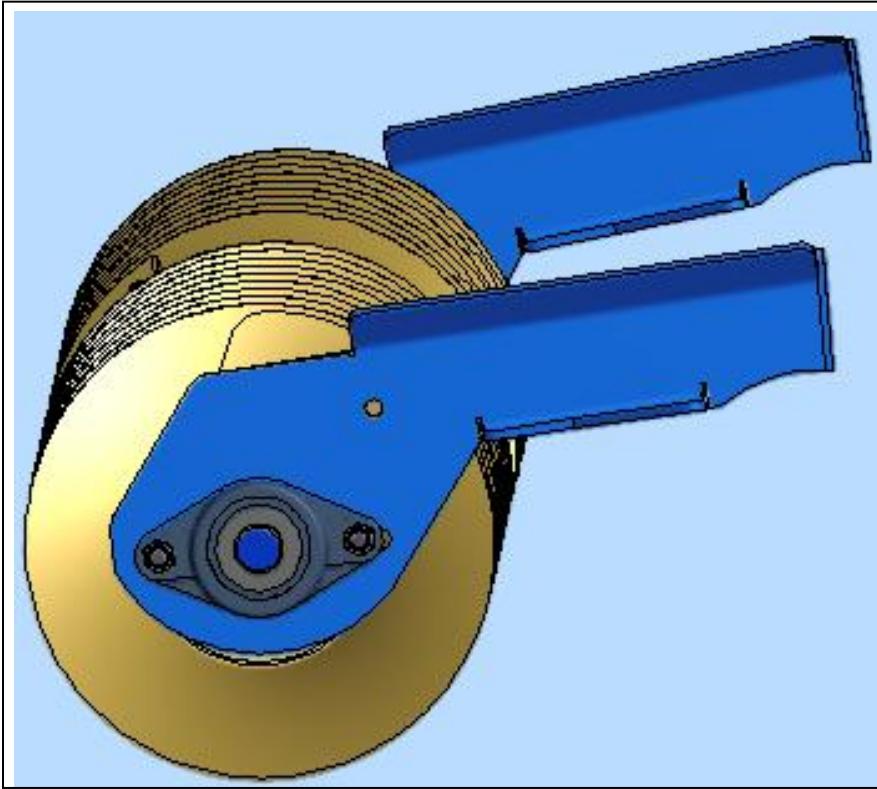


FIGURE 5 LEFT END WELD ON MOUNT (END VIEW)

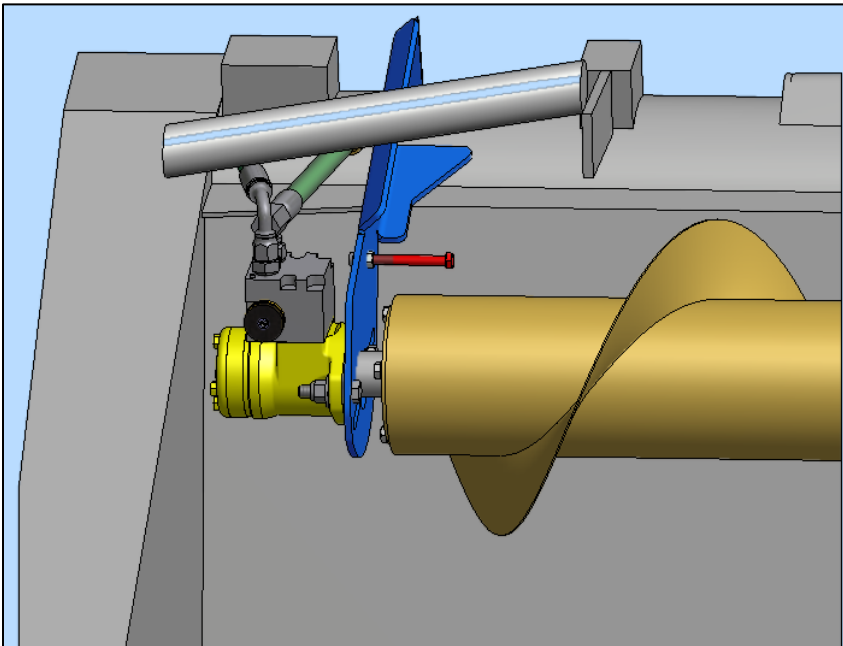


FIGURE 6 RIGHT HAND END MOUNT AND DRIVE

Note the **stop bolt** is used to completely stop the auger from turning IF you have a reason. The normal position is to have the **stop bolt** stored on the motor side of the blue mounting bracket.

To use the **stop bolt** - install the bolt into the path of the rotating auger as show, and then completely open the bypass adjusting valve so that excessive back pressure is not built up in the canvas circuit.

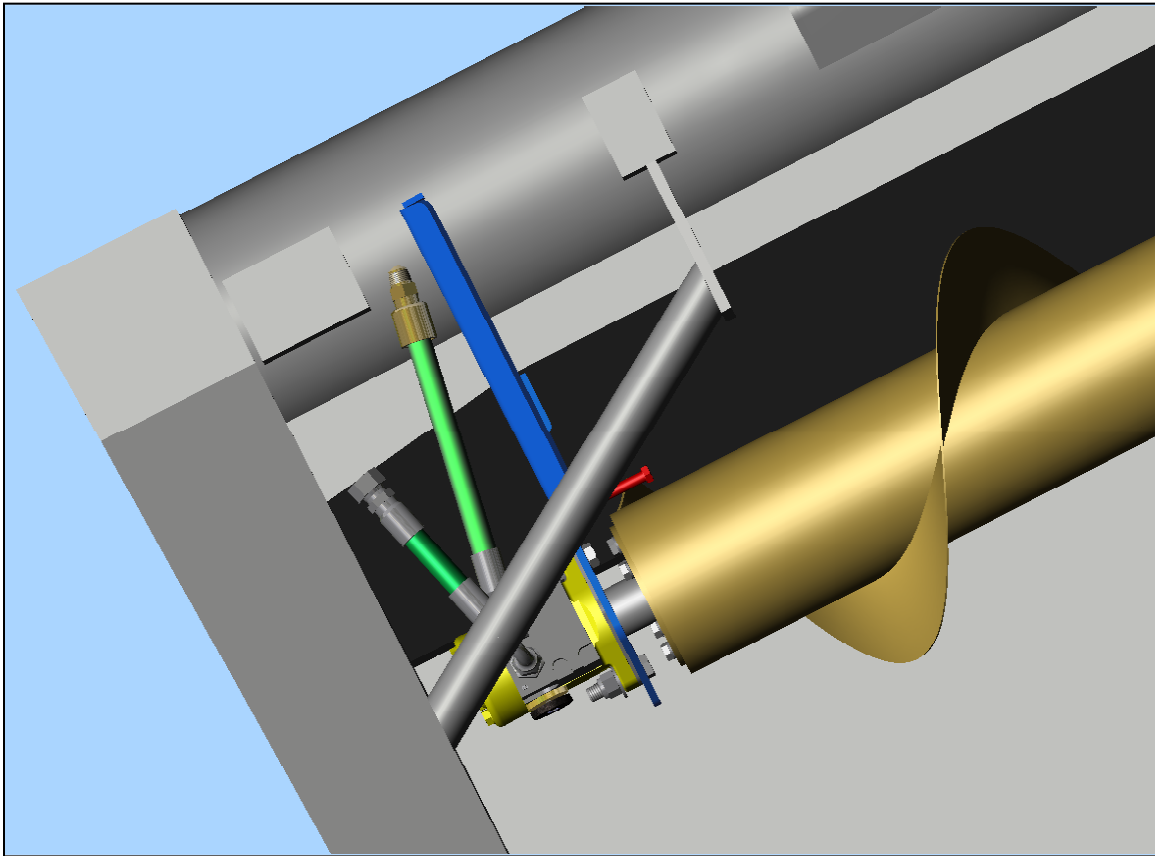


FIGURE 7 RIGHT HAND END MOUNT AND DRIVE (TOP VIEW)

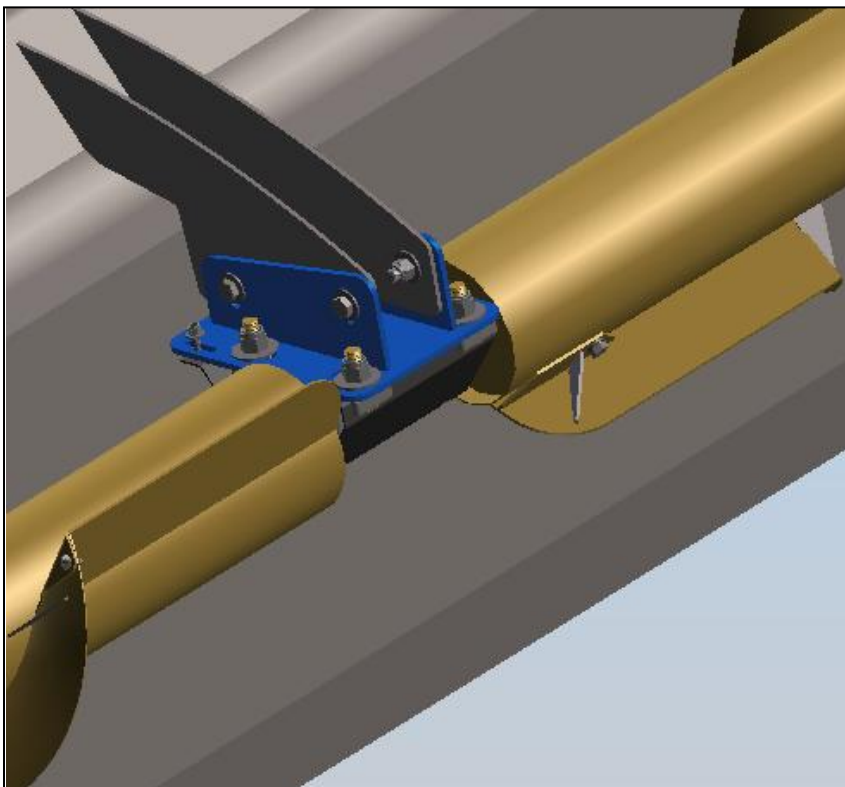


FIGURE 8 CENTER MOUNT 30 FOOT (KIT # 405796) WITH PLASTIC COVER

1. For the 30 foot model, to align the center mount in the same rotation as the end mounts, run a straight edge string through the center holes of the end mounts and through a single bearing bolted onto center mount. Assemble the weld on parts, plus the bearing hanger into the center of the slots, and get the center mount tack welded into position as per the dimensions in Figure 3 weld on mount directions above.
2. The 36 foot model has the mount plates already there for the bolt on center mount. simply bolt the plate onto the center mount. see Figure 13 36 foot Center bearing mount bolted to header with Guard removed
3. Identify the left auger as the one that moves material toward center turning down on the forward edge of the auger. The brown 12 inch removable paddle goes to the center of header. With the sprockets and bearing flanges on the end, lift the left auger into position. Bolt loosely into place. Position the auger $\frac{1}{4}$ " or less from the back edge of header. Tighten the bearing mount bolts. The header acts as the stripper that prevents crop from wrapping around the auger. Adjusting closer than $\frac{1}{4}$ " is better, but usually unnecessary.
4. Preassemble the motor mount and drive hub through the hole in weld on mount on right end.
5. Identify the right auger as the one which moves material toward center turn down on the forward edge of the auger. The 12 inch long removable paddle goes to the center of header. Lift the right auger into place with the bearings and sprockets on the center of auger. Bolt the auger onto the drive hub on the motor, and center mount plate.

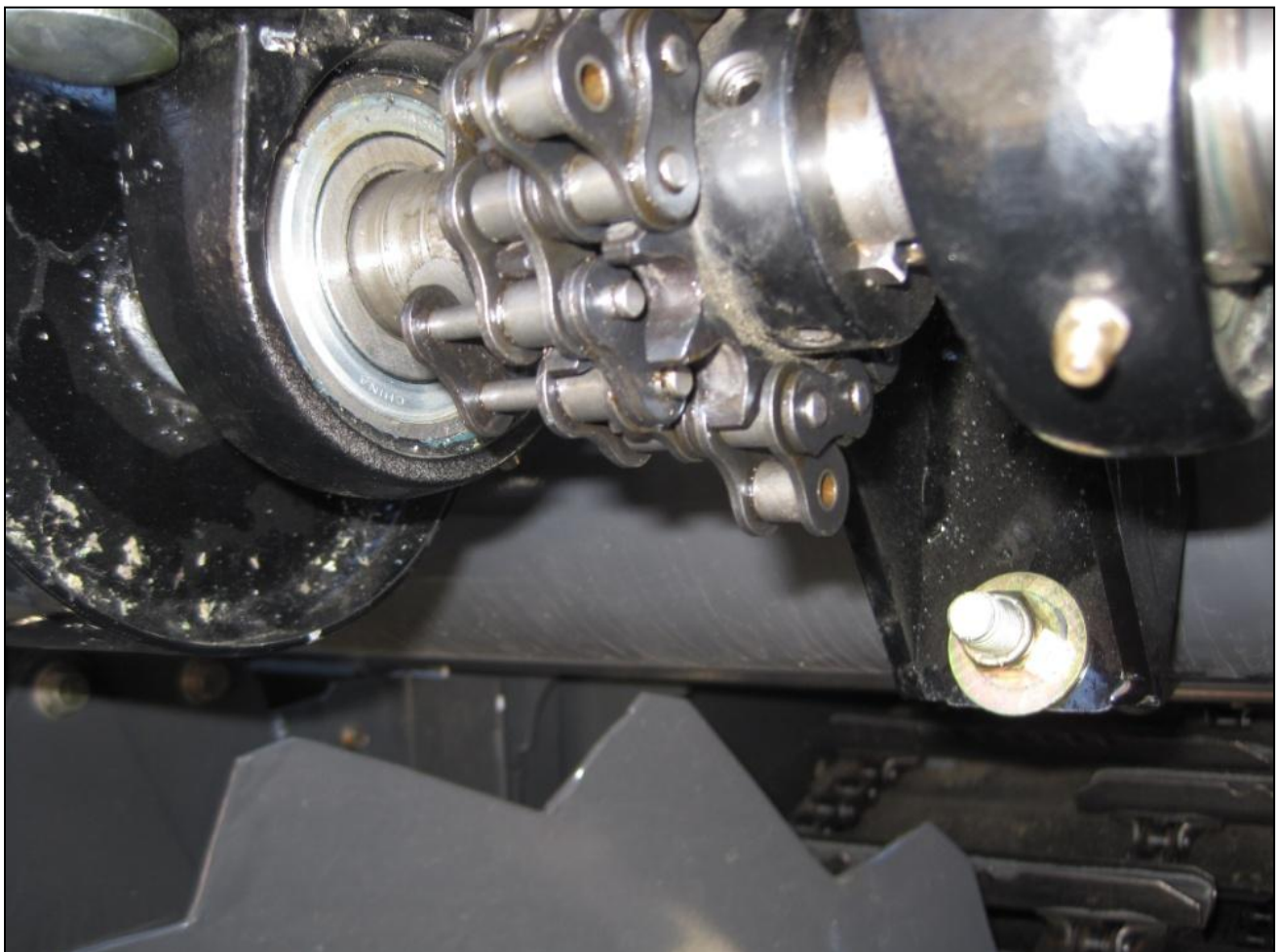


Figure 9 Install the joiner link into chain coupler with one side bent out of way .

2. Install the plastic shield as shown on the RH (or left hand) in front of auger.

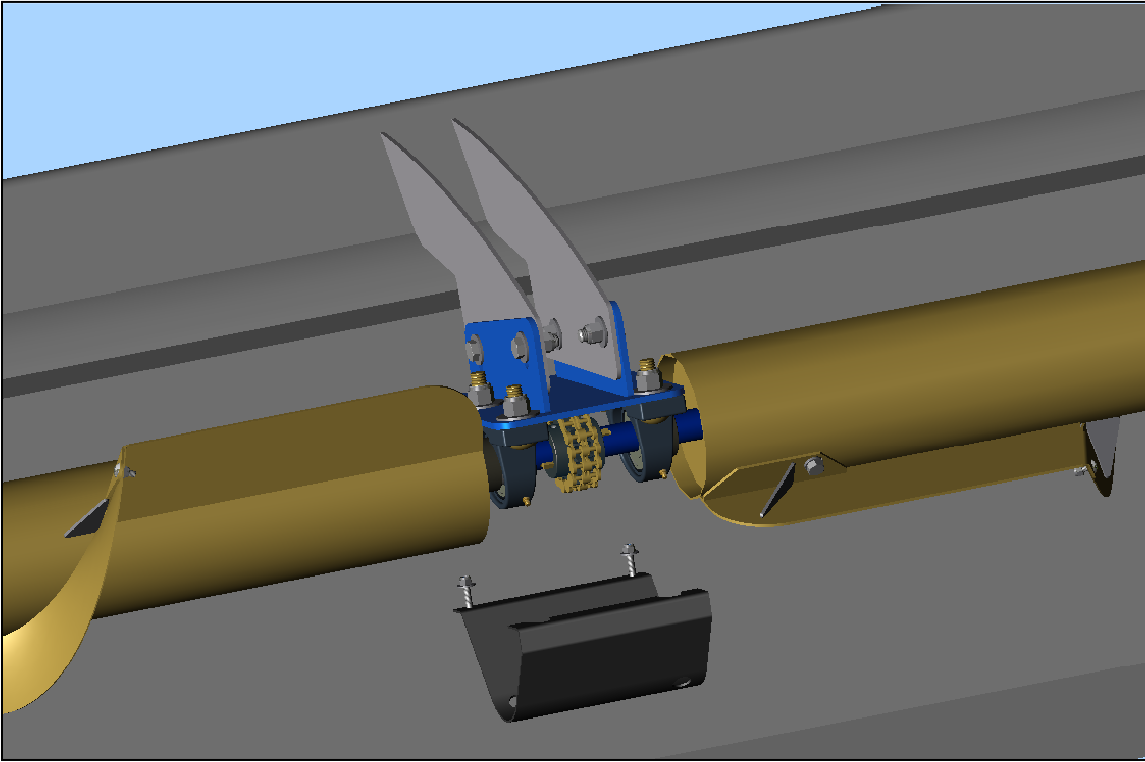


FIGURE 10 CENTER MOUNT 30 FT WITH PLASTIC GUARD REMOVED (FRONT VIEW)

1. Install hydraulic hoses as follows:
2. install the adapter and hoses on to the new Ag Shield motor as shown in parts page 7.1 Right Hand end MOUNT AGCO 30 and 36 foot.
3. The forward hose of the mount, part #118872 will connect to fitting "G" below.
4. The rear hose from the Ag Shield motor- part # 118826 will connect to hose "H" below.
5. Test direction of rotation to be down on the front of the auger. for operation in field, set speed of the canvases, and use the flow control supplied to set the auger flighting speed to be 5% or slightly greater than the canvases. see operations below.

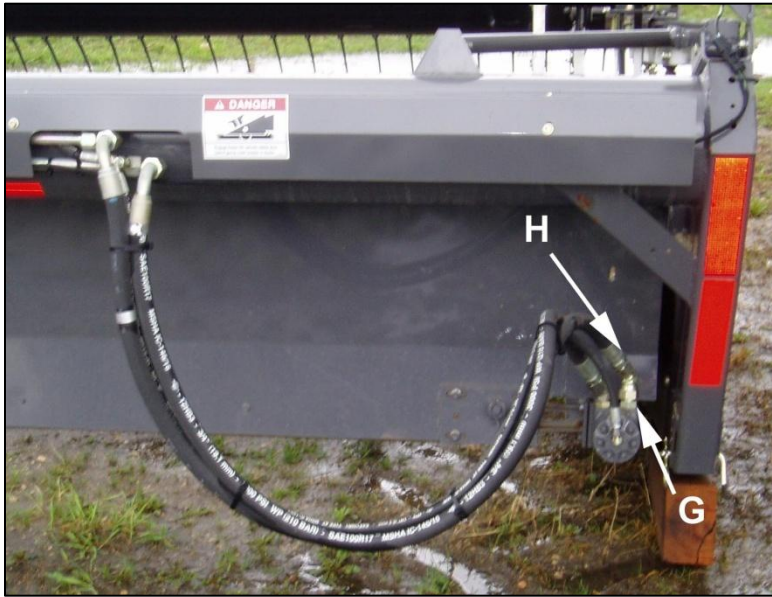


FIGURE 11 HOSES ON 30 + 36 FT AGCO HEADERS

4.2. INSTALLATION 36 FOOT AGCO HEADER WITH CROSS AUGER

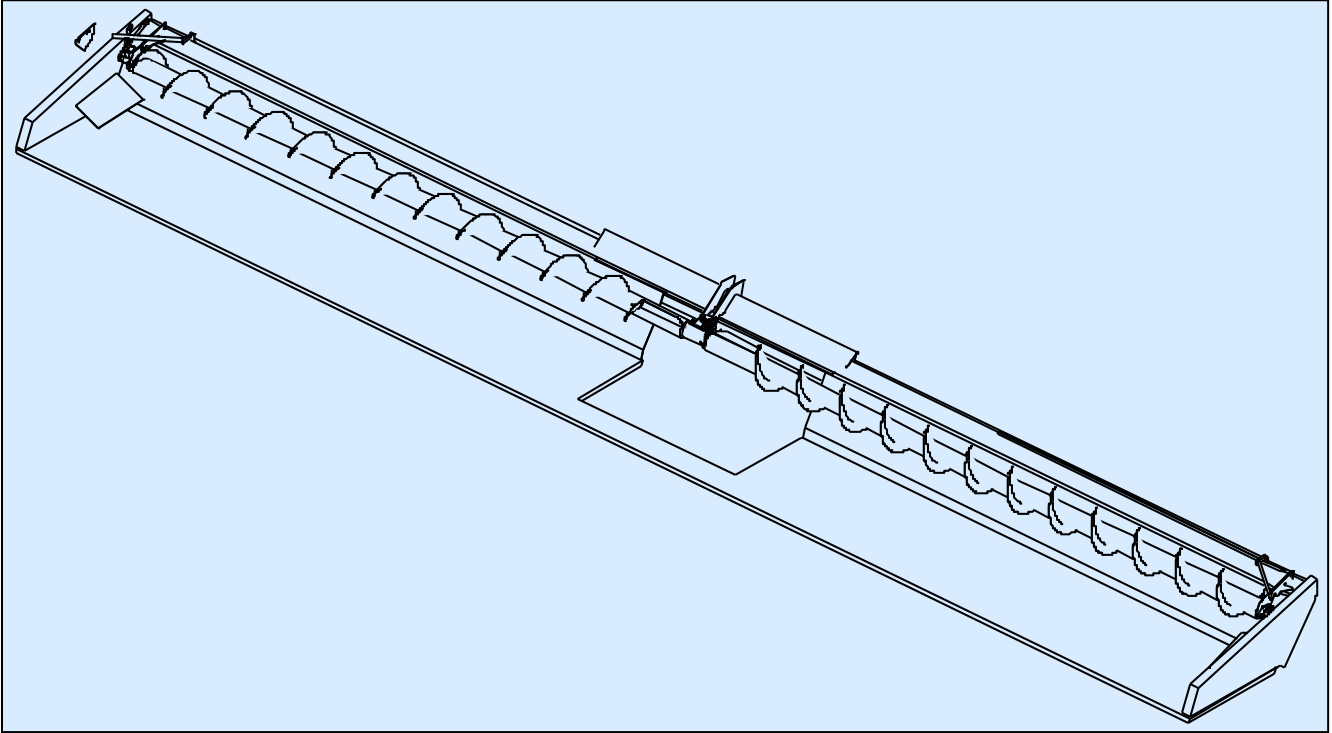


FIGURE 12 36 FOOT OVERALL VIEW (KIT #405797)

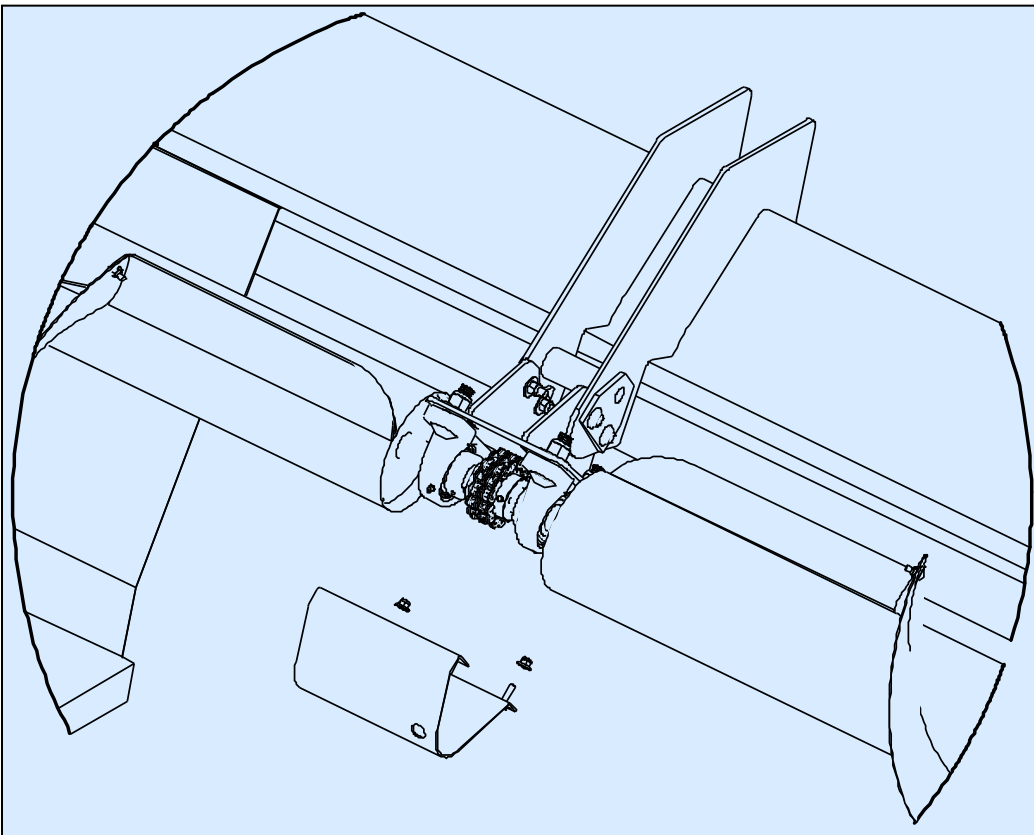
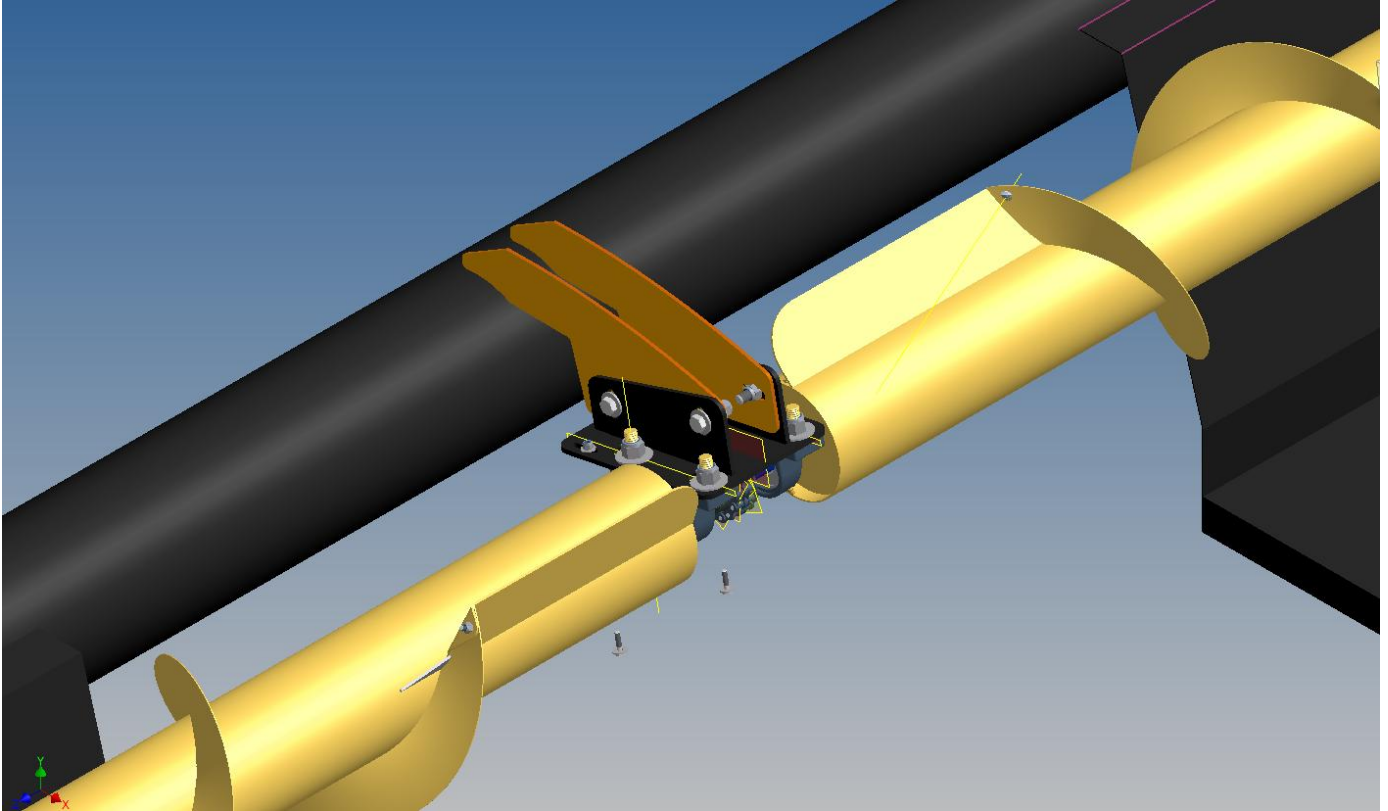


FIGURE 13 36 FOOT CENTER BEARING MOUNT BOLTED TO HEADER WITH GUARD REMOVED

4.3. 405795 25 FT CENTER BEARING MOUNT VIEW



Here is a view of the center mount weld on brackets(407257) with the bolt on center mount (406213).

5. Agco 5300 installation steps

Operator's handbook for Ag Shield Cross auger to fit on to a Agco 5300 header

Please note that the colors in the instructions refer to the **manual** colors, **not the actual color** the kit parts are painted.

- 1) Hang center bearing mount using the 1/2 x 4 bolts, nylock nuts, washers. Leave loose for adjustment.(FIG 1)
- 2) Assemble the motor to the RH end mount.(FIG 2)
- 3) Assemble the direct drive hub onto the motor shaft.(FIG 2)
- 4) Bolt the RH assembly to the auger using the 3/8 x 1-1/4 bolts, lock washers.(FIG 3)
- 5) Put bearing and sprocket onto the RH auger center end shaft with key way.(FIG 4)
- 6) Hang the RH auger and rest the center on the bearing hanger while the RH end is fastened to the header using the 1/2 x 1-1/2 bolts.(FIG 5)
- 7) Put sprocket and bearing onto the LH auger center end shaft with key way.(FIG 6)
- 8) Mount the LH end mount to the LH auger using the bearing and 1/2 x 2 carriage bolts.(FIG 7)
- 9) Hang the LH auger and rest the center on the bearing hanger while the end mount is fastened to the header using the 1/2 x 1-1/2 bolts. (FIG 8)
- 10) Bolt the center bearings to the center bearing mount using the 5/8 x 2-1/2 bolts , nylock nuts and washers. do not final tighten.(FIG 9)
- 11) Install the chain coupler onto the sprockets in the center. (FIG 10)
- 12) Install the paddles on the LH and RH auger in the center, using the threaded hole in the auger. see 405862 center mount exploded view for details.
- 13) Set spacing from left to right and for/aft. The auger flighting should be 1/4" away from the backboard of the header.
- 14) Tighten all lock collars and bolts, double checking the auger did not move out of position while tightening the bolts.
- 15) Loosen the carriage bolts in the center, install the plastic guard for chain coupler. tighten center carriage bolts back up. (FIG 11)
- 16) Hook up the hydraulics, take the return line off of the reel motor, take agshield intake hose and insert on the return port on the reel motor, the return from the agshield motor goes back to tank.(FIG 12)

5.1. AGCO 5300 INSTALLATION VISUAL AIDS

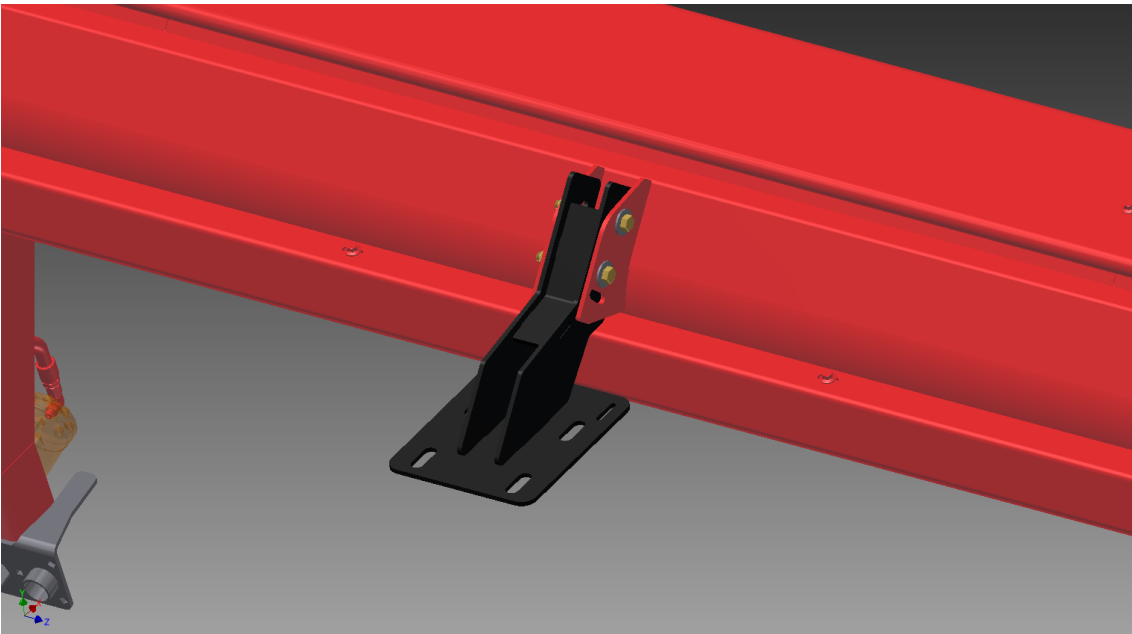


FIGURE 1 CENTER BEARING HANGER MOUNT



FIG 2 RH END MOUNT WITH MOTOR AND DIRECT DRIVE. SEE 405862 RH END VIEW FOR MORE DETAILED PART BREAK DOWN.

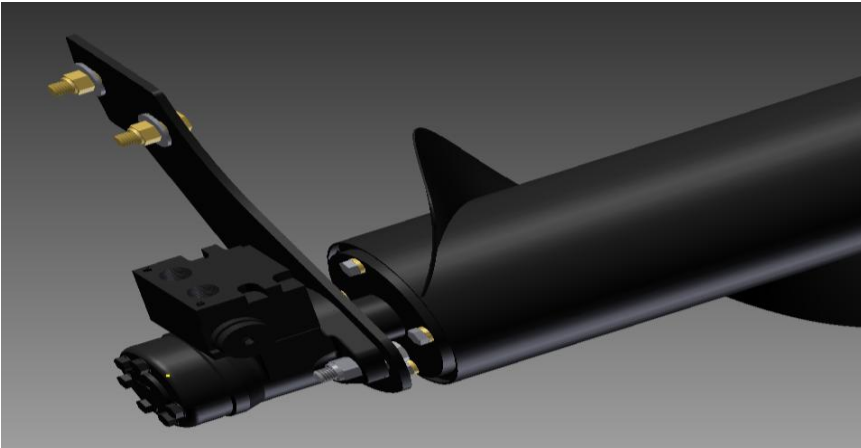


FIG 3 RH END MOUNT ATTACHED TO RH AUGER.

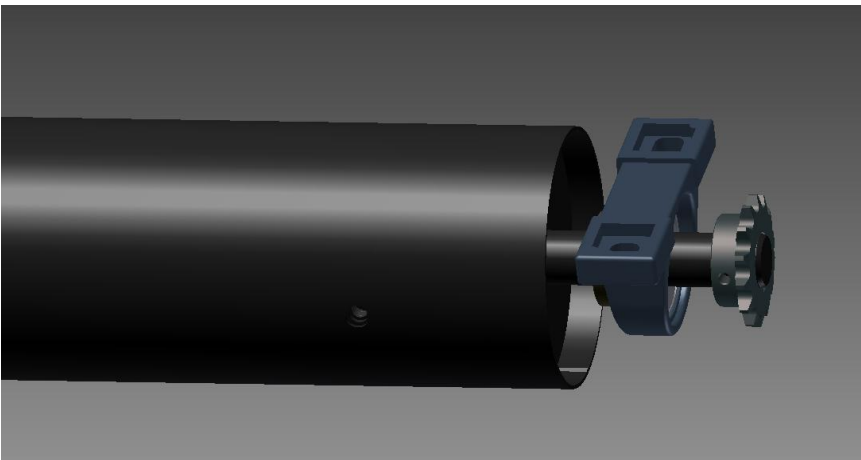


FIG 4 RH AUGER WITH BEARING, LOCKING COLLAR AND SPROCKET WITH KEY.



FIG 5 SHOWING AUGER BEARING RESTING ON THE TOP OF THE CENTER BEARING PLATE.

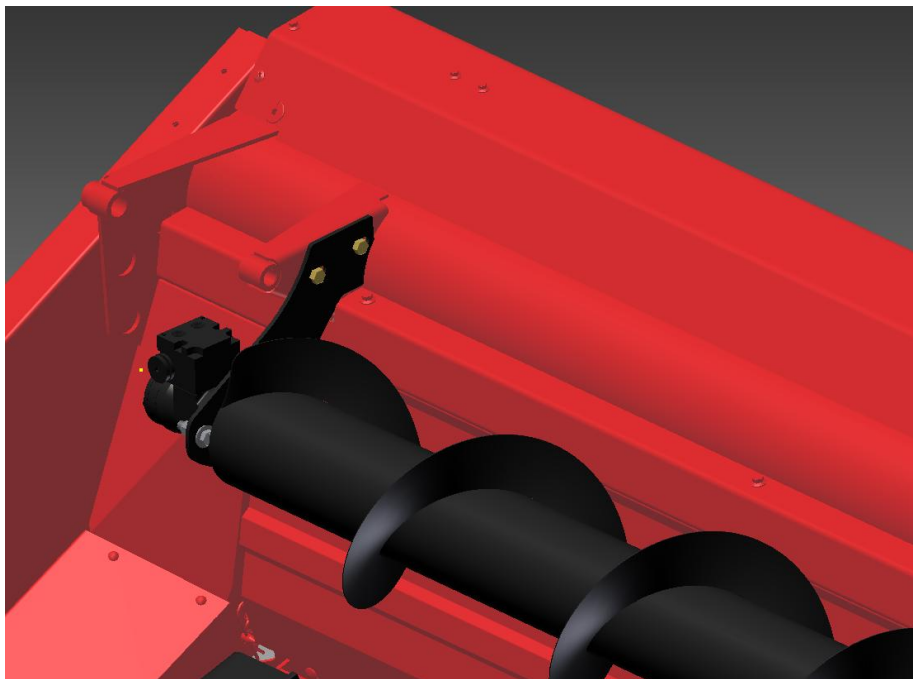


FIG 5 SHOWS RH END MOUNTED TO HEADER MOUNTS USING 1/2 X 1-1/2 BOLTS.

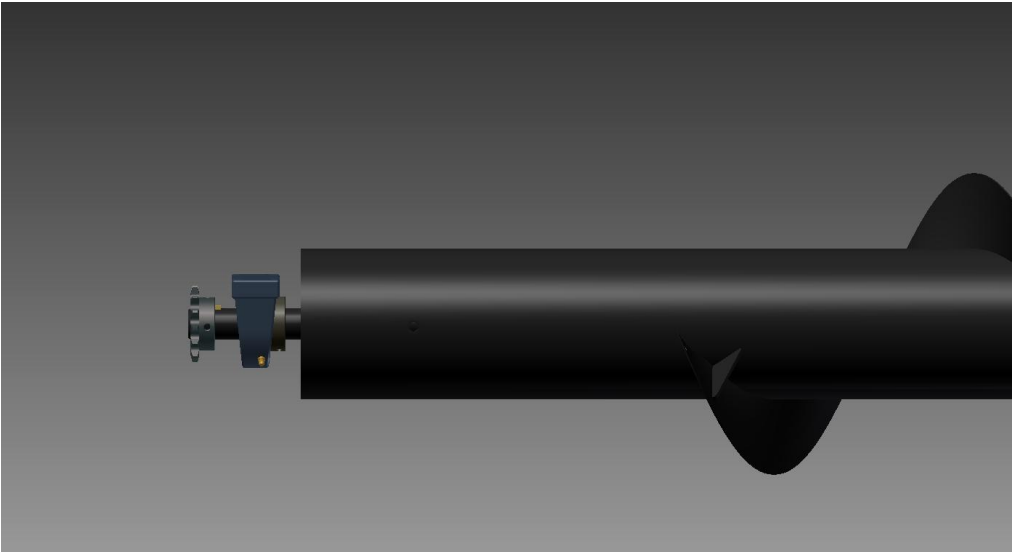


FIG 6 LH AUGER WITH BEARING, LOCK COLLAR, SPROCKET AND KEY STOCK.



FIG 7 LH AUGER END MOUNT WITH BEARING LOCKING COLLAR AND CARRIAGE BOLTS.

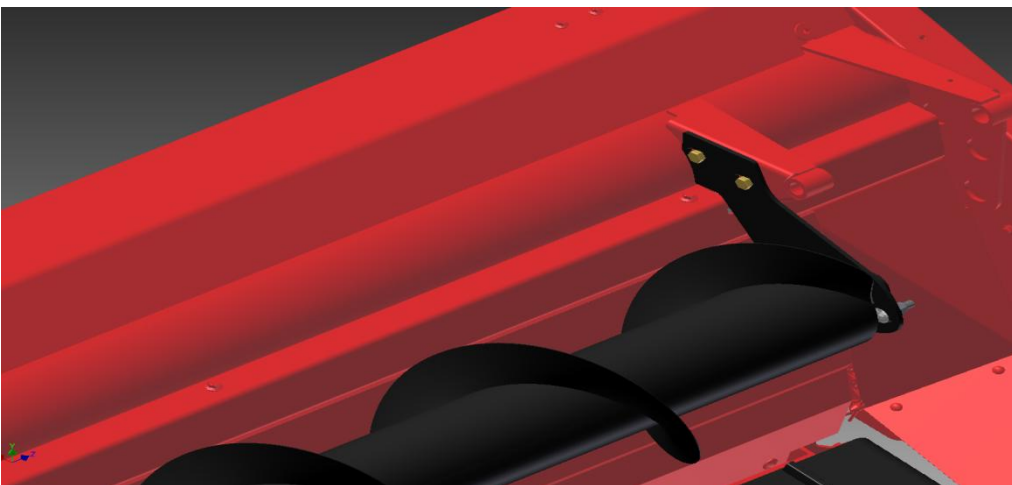


FIG 8 LH AUGER END MOUNTED ONTO THE HEADER USING THE 1/2 X 1-1/2 BOLTS.

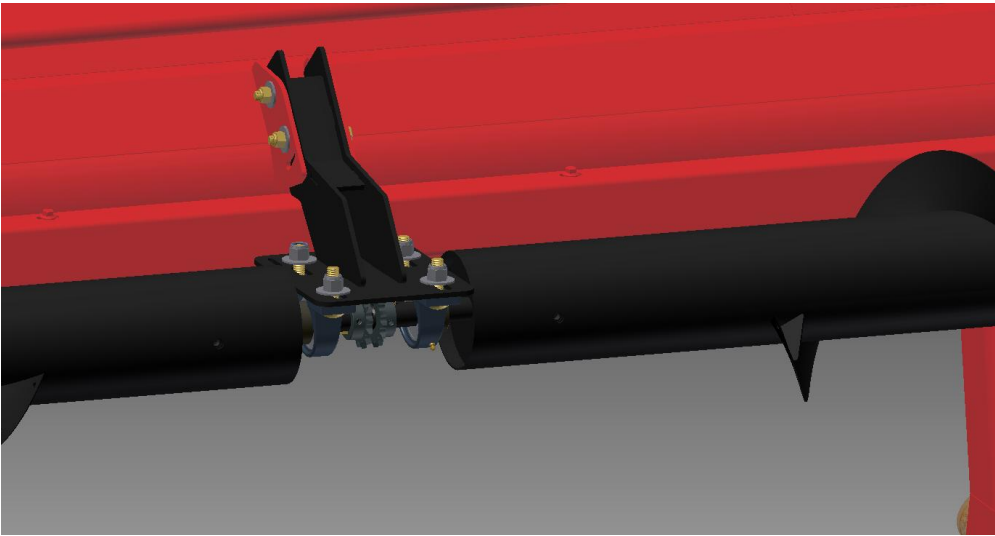


FIG 9 CENTER BEARINGS BOLTED TO CENTER BEARING MOUNT WITH 5/8 CARRIAGE HEAD BOLTS.

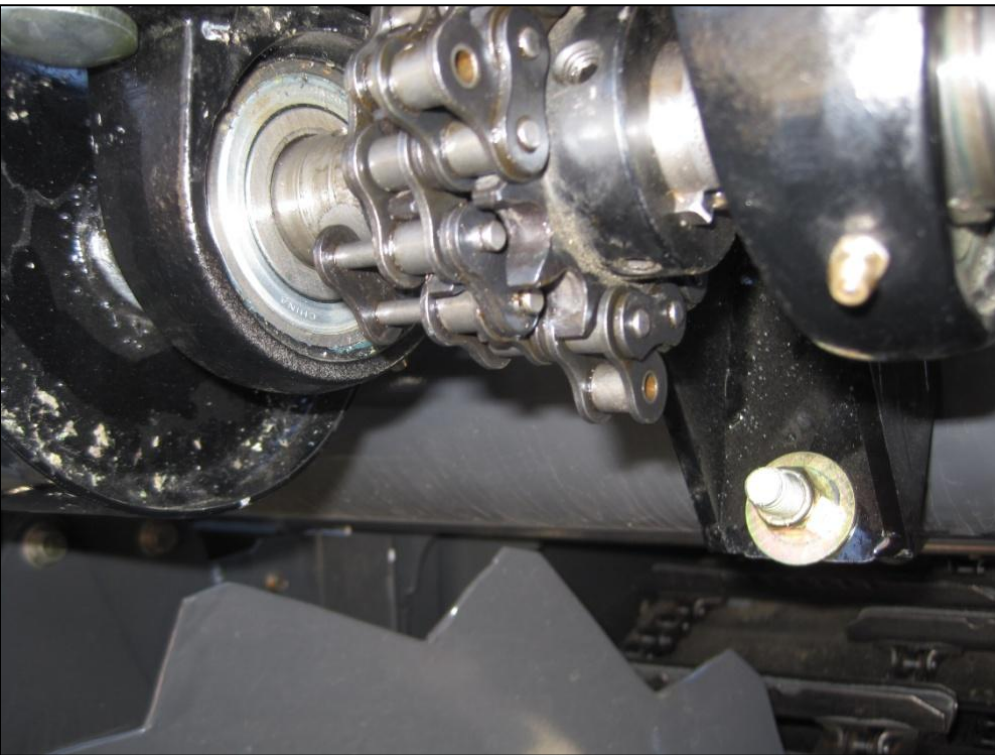


FIG 10 INSTALL THE CHAIN COUPLER ONTO THE SPROCKETS.



FIG 11 CENTER PLASTIC TO COVER THE BEARINGS AND CHAIN COUPLER.

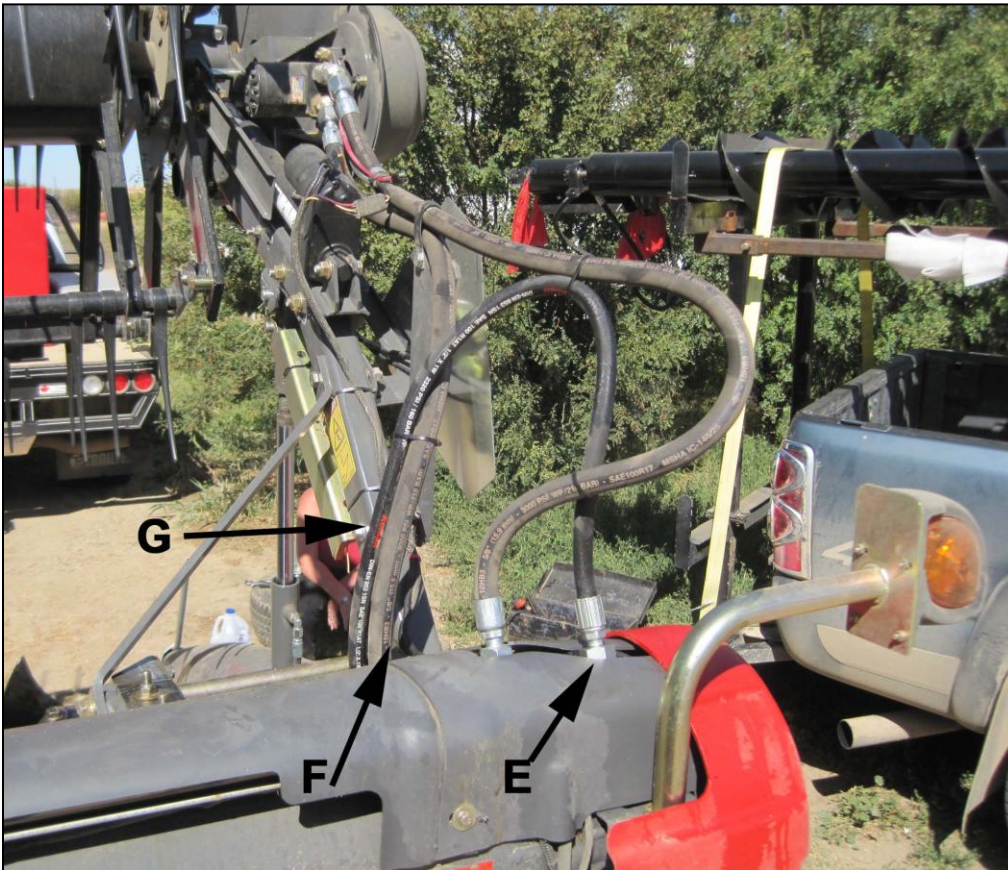


FIG 12 INSTALL HYD HOSES ONTO THE REEL MOTOR AND AG SHIELD MOTOR.

5.2. STRIPPER BAR INSTALLATION

- 1) All Ag Shield augers now come with a stripper bar to help prevent crop from wrapping on the auger, as well as to provide a cleaner transfer of crop to the center of the header.
- 2) Put the stripper bar on last after the auger has been installed and tested. This will ensure the height of the auger does not change after the stripper bar height has been set.



Hold stripper bar up to the back board and mark the holes in the middle of the slot (every second hole will be fine)

A magnet will help hold one end if installing alone.

Make sure before drilling that the drill will not damage anything behind the back board (hyd fittings hoses etc)

Drill 3/8" holes in the middle of the slot in the back board.

Set the stripper bar to be 1/4" below the flighting.

Tighten the stripper bar to the back board.

6. OPERATIONS



DANGER

Stay clear of auger whenever it is running

6.1. FIELD SETTING THE CROSS AUGER

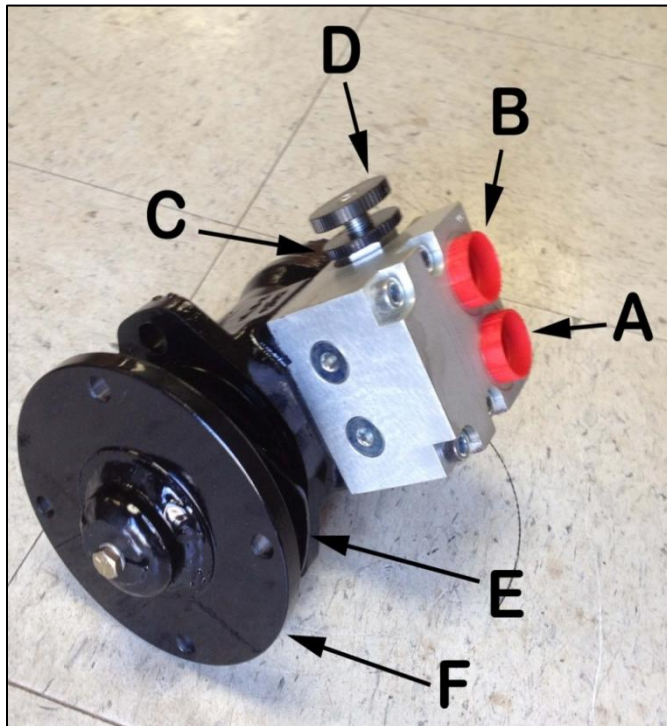


FIGURE 14 SAUER MOTOR SPEED CONTROL

Terminology

- A: Return or tank line
- B: Pressure line
- C: Lock wheel
- D: Auger speed adjustment
- E: Shim for hydraulic motor mount
- F: Direct driver motor adapter

Cross augers can only be adjusted for speed of rotation. In many conditions, the correct speed for many crops would be to have the flighting advancing the crop along the canvas 5% or slightly faster than the canvas speed. To increase auger speed, loosen lock wheel A counterclockwise, rotate adjust valve C clockwise, relock the valve by turning A clockwise. Closing this valve reduces the bypass of oil around the hydraulic motor. To slow down the rpm of the auger, rotate adjust valve C counterclockwise.

Observe the auger from the combine cab or swather operating platform. Focus your eye on one auger flighting and compare to a particular canvas slat. The auger can be adjusted to run at the same rate in feet per minute. As desired, slightly increase the cross auger to have it pulling ahead faster than the canvas.

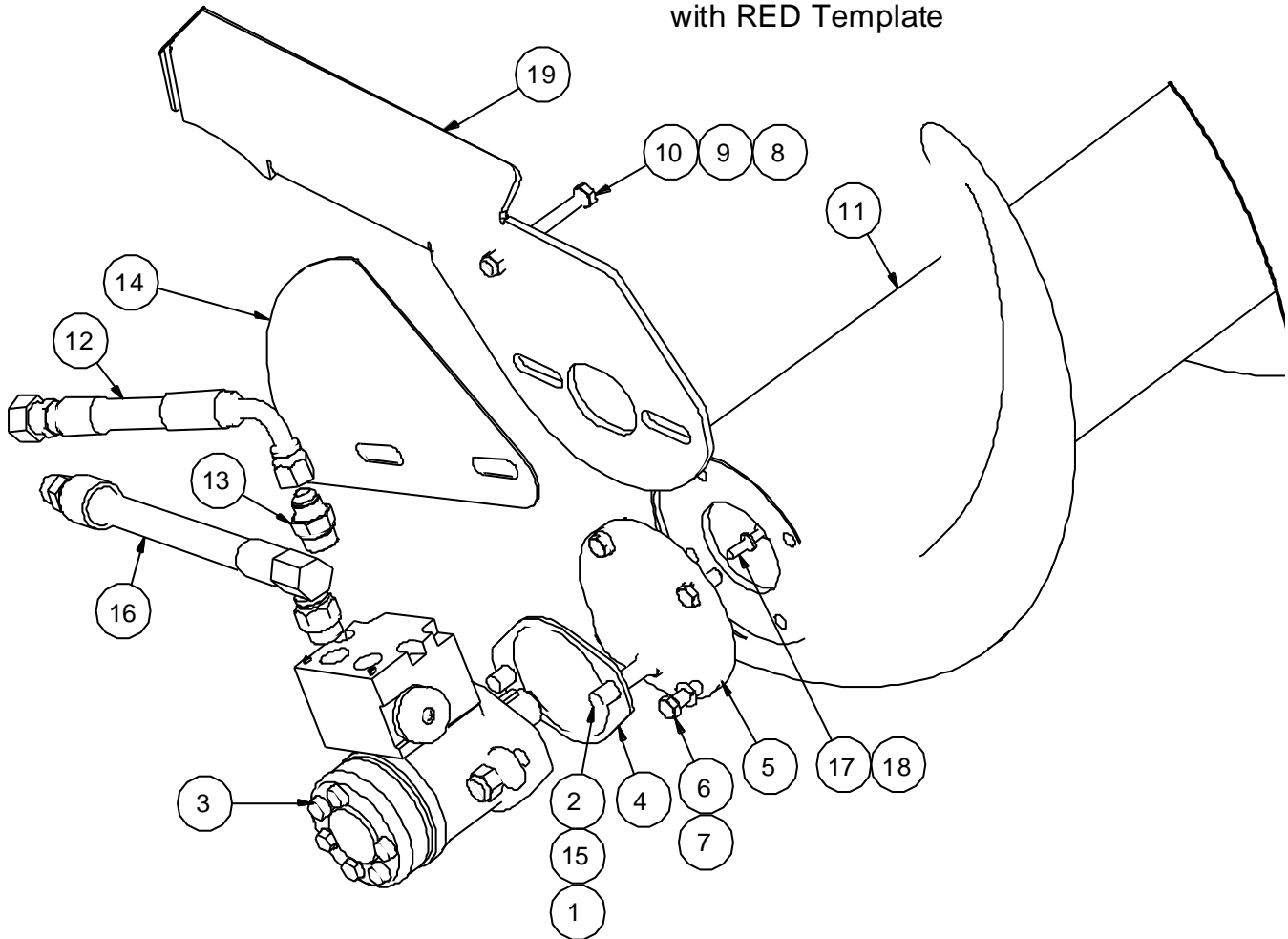
In peas, augers can often be operated at a very slow speed--- 30% of canvas speed, and still feed as much crop into combine. When augers turn slower, there are fewer tendencies to wrap.

If wrapping occurs at the center of the header, try removing one or both of the bolts on paddles. In some conditions the paddles are an advantage, in some conditions the paddles are a disadvantage.

7. Cross Auger Parts for AGCO MF 5000 and 5200 Headers

7.1. RIGHT HAND END MOUNT AGCO 30 AND 36 FOOT

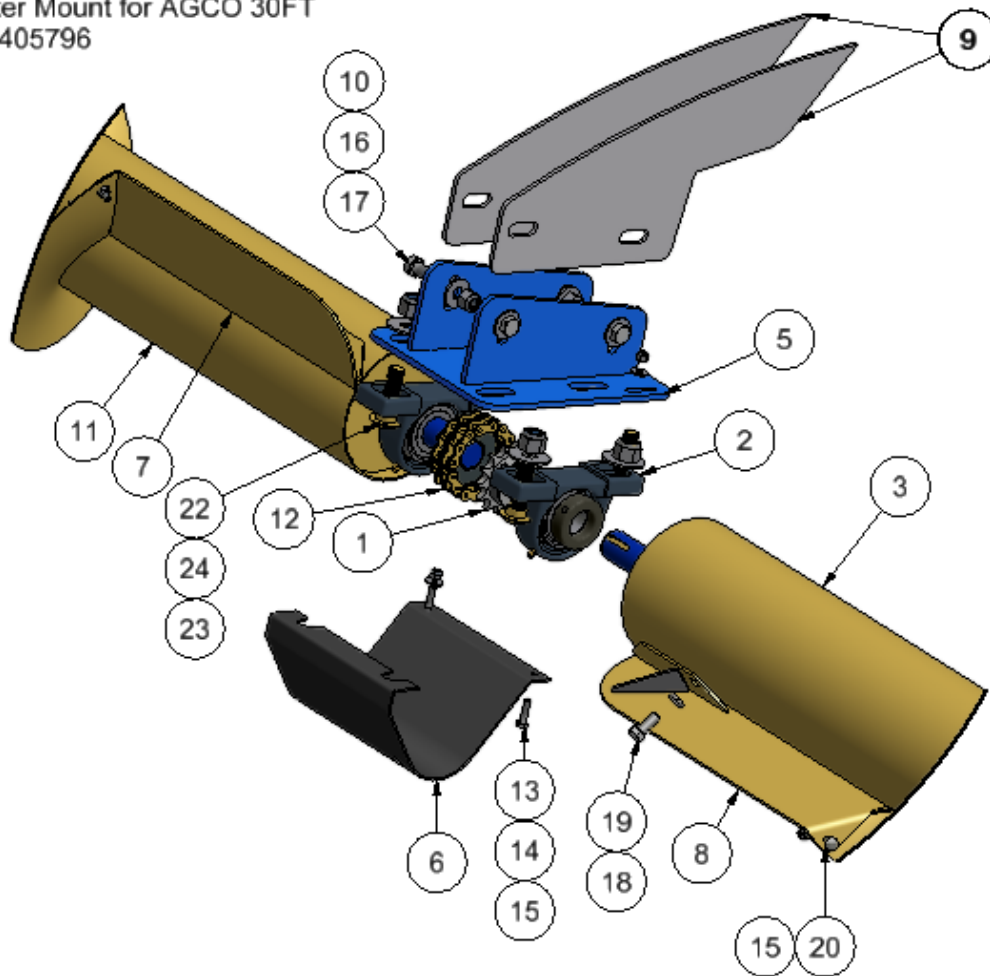
RH Mount and Drive Details
with RED Template



ITEM	QTY	PART NUMBER	ITEM	QTY	PART NUMBER
1	8	102125 nut nylok 1/2" nc gr5 pltd	12	1	118872 hose 08 x 49 12MFJIC x 90 deg 10MORB
2	2	100703 bolt 1-2 X 2 gr5 pltd nc	13	1	117984 ADAPTER STR 10MORB X 08 MJIC
3	1	117170 motor with flow control 5.9 danfoss	14	1	408246 template 12 in OD auger weld on mt dirdrv
4	1	407271 shim hyd motor mt AGCO 9250	15	10	101106 flat washer 1/2"
5	1	407105 direct drive motor adapter wldt	16	1	118826 hyd hose 34in 08 x 08MORB90 X 08MJIC
6	4	100602 bolt 3-8 X 1 gr5 pltd nc	17	1	100404 HEX HD BOLTS 1 4 NC X 1 1 4
7	4	101145 lock washer 3/8"	18	1	101144 washer lock 1/4
8	1	102123 nut nylok 3/8" nc gr5 pltd	19	2	408256 Agco 5000 weld on mtr brng auger
9	1	102131 nut jam 3-8 nc gr5 1-2 HGT			
10	1	100641 bolt 3-8 X 3 gr8 pltd nf			
11	1	408243 Agco 30 ft 5200 6 in RH dirdrv			

7.2. CENTER MOUNT AGCO 30 FOOT

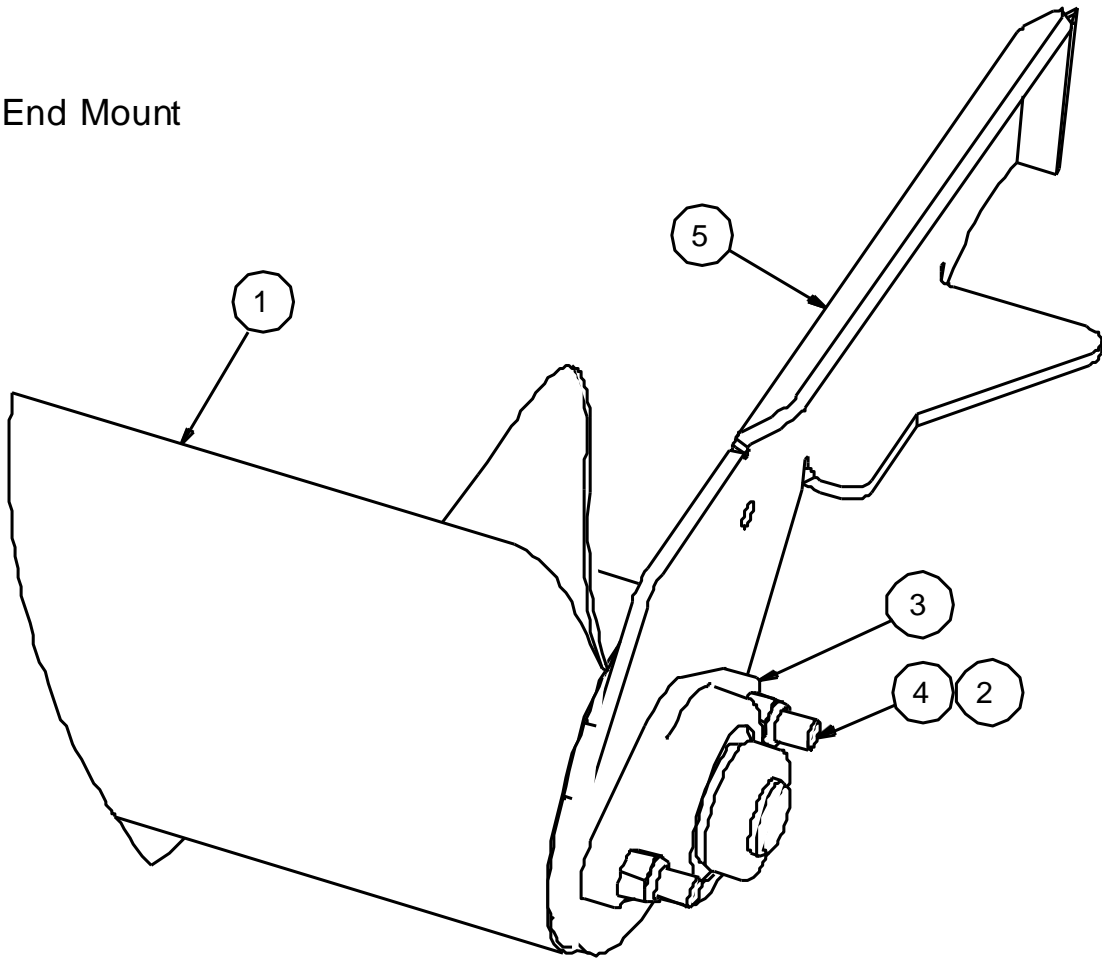
Center Mount for AGCO 30FT
Kit #405796



ITEM	QTY	PART NUMBER	ITEM	QTY	PART NUMBER
1	2	114468 chain coupler 1-1/4" ID	12	1	114469 chain 50 2R for chain coupler
2	2	114470 pillow block SA207 2 bolt	13	2	100403 bolt 1-4 X 1 gr5 pltd nc
3	1	406145 JD930 Auger Wldmt 6in LH	14	4	101103 flat washer 1/4"
4	2	114471 Bearing SA207 1-1_4" greasable	15	4	102121 nut nylok 1/4" nc gr5 pltd
5	1	406213 MD973 36ft Center Bearing Mnt Wldmt	16	10	101106 flat washer 1/2"
6	1	405087 plastic guard	17	4	100702 bolt 1-2 X 1 1-2 gr5 pltd nc
7	1	405725 flap bolt on wldt 3in RH	18	2	101142 lock washer 7-16
8	1	405726 flap bolt on wldt 3in LH	19	2	100660 bolt 7-16 X 1 gr5 pltd nc
9	2	406255 mt plate center weld on agoc 6 tb	20	2	100966 Carriage Bolt 1-4 X 3-4 NC
10	8	102125 nut nylok 1/2" nc gr5 pltd	21	2	405361 key 1/4" x 1/4" x 1"
11	1	408243 Agco 30 ft 5200 6 in RH dirdrv auger	22	4	100965 carriage bolt 5/8" X 2-1/4" nc
			23	4	102127 nut nylok 5/8" nc gr5 pltd
			24	4	101107 flat washer 5/8"

7.3. LEFT END BEARING MOUNT AGCO 5000/5200 30 AND 36 FOOT

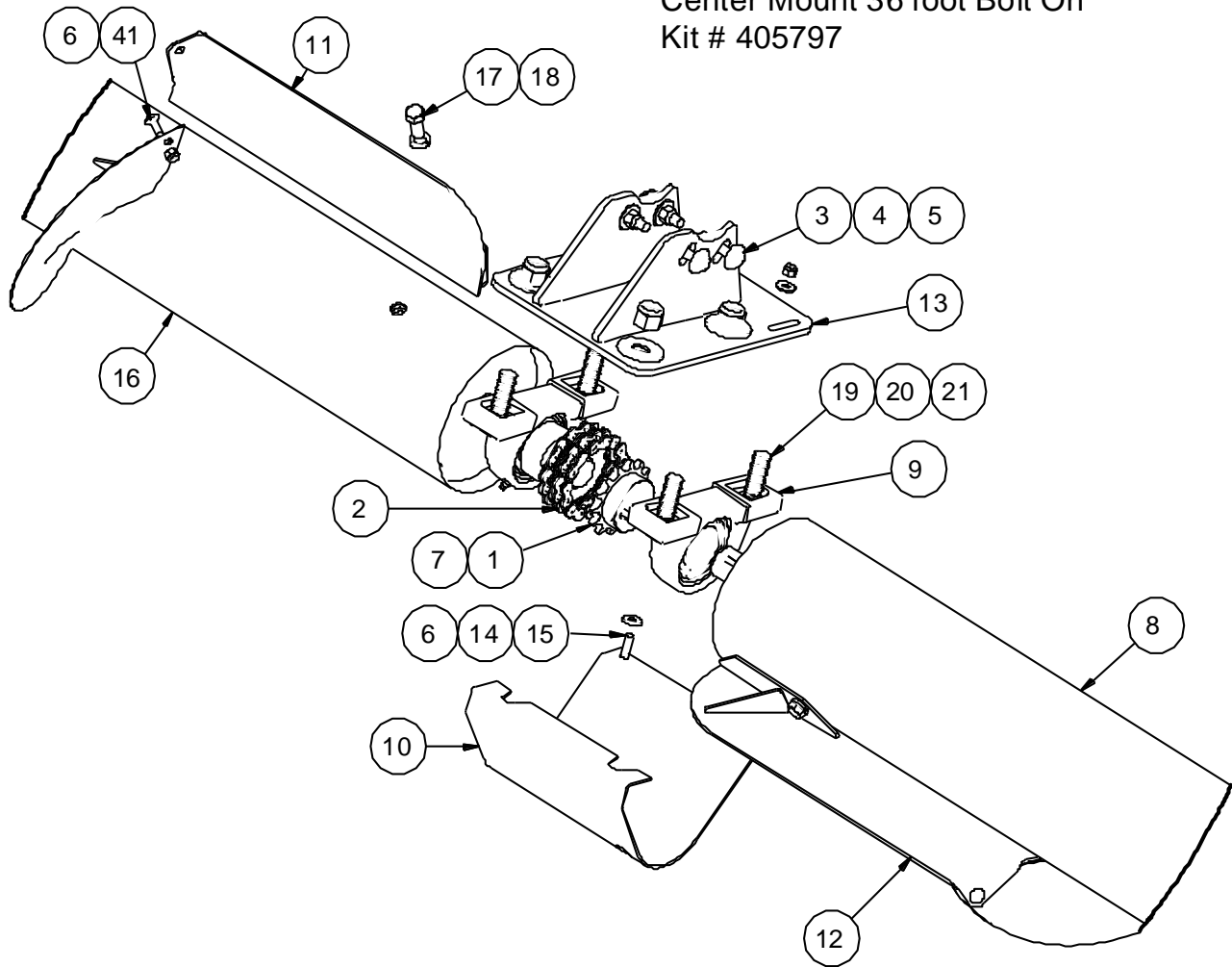
Left Hand End Mount



ITEM	QTY	PART NUMBER	ITEM	QTY	PART NUMBER
1	1	406145 JD930 Auger Wldmt 6in LH	4	2	100943 carriage bolt 1-2 X 2 NC
2	8	102125 nut nylok 1/2" nc gr5 pltd	5	2	408256 Agco 5000 weld on mtr brng mnt wldmnt
3	1	114483 Bearing 1.25 in FL207 2 bolt flat flg			

7.4. CENTER MOUNT AGCO 36 FOOT BOLT ON

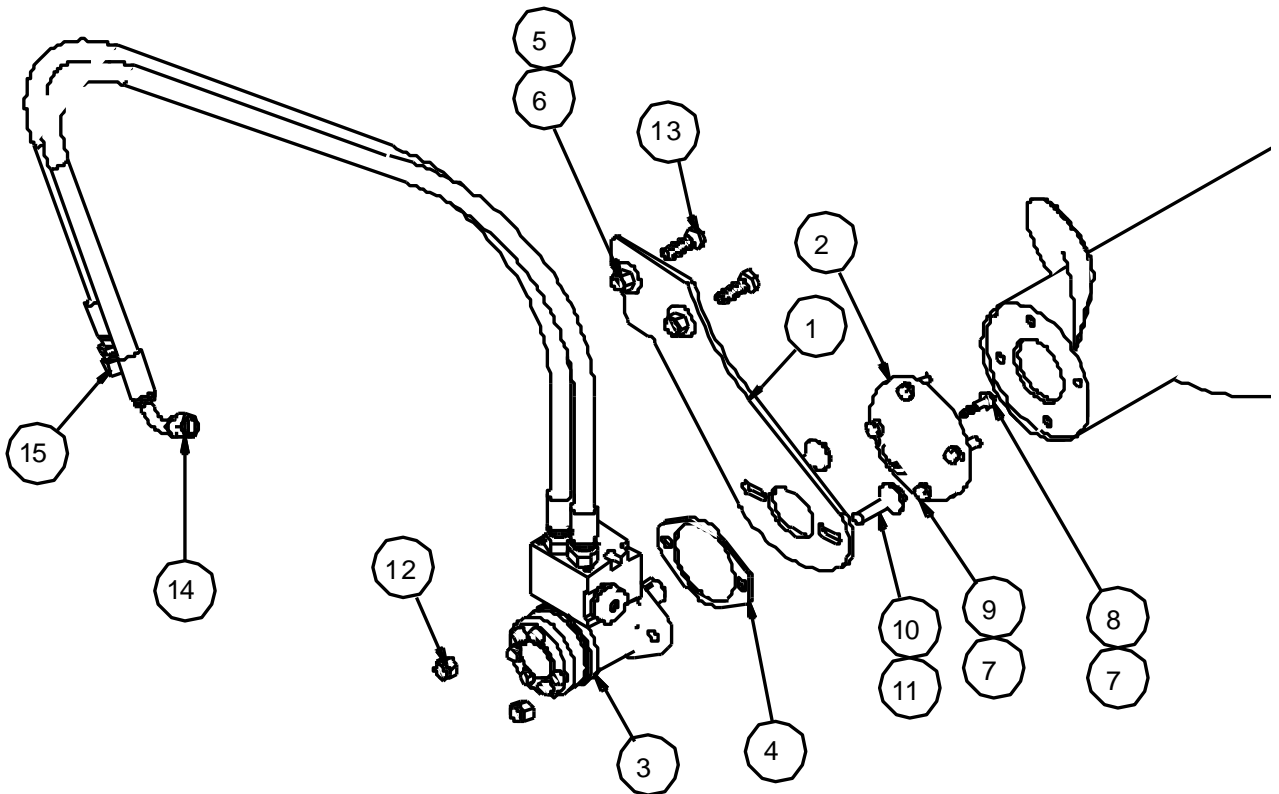
Center Mount 36 foot Bolt On
Kit # 405797



ITEM	QTY	PART NUMBER	ITEM	QTY	PART NUMBER
1	2	114468 chain coupler 1-1/4" ID	12	1	405726 flap bolt on wldt 3in LH
2	1	114469 chain 50 2R for chain coupler	13	1	406284 center wldt Agco 5100 36 foot
3	4	100605 bolt 3-8 X 1 3-4 gr5 pltd nc	14	4	101103 flat washer 1/4"
4	8	101105 flat washer 3/8"	15	2	100403 bolt 1-4 X 1 gr5 pltd nc
5	5	102123 nut nylok 3/8" nc gr5 pltd	16	1	408237 Agco 36 ft 5000 6 in RH dirdrv auger
6	4	102121 nut nylok 1/4" nc gr5 pltd	17	2	100660 bolt 7-16 X 1 gr5 pltd nc
7	2	405361 key 1/4" x 1/4" x 1"	18	2	101142 lock washer 7-16
8	1	406274 AgCo 5100 Auger Wldt 6in LH 36ft	19	4	100965 carriage bolt 5/8" X 2-1/4" nc
9	2	114471 Pillow Block Bearing Assy P207-SA207	20	4	102127 nut nylok 5/8" nc gr5 pltd
10	1	405087 plastic guard	21	4	101107 flat washer 5/8"
11	1	405725 flap bolt on wldt 3in RH	22	2	408256 Agco 5000 weld on mtr bmg mnt wldmnt

7.5. 405862 AGCO 5300 RH END VIEW

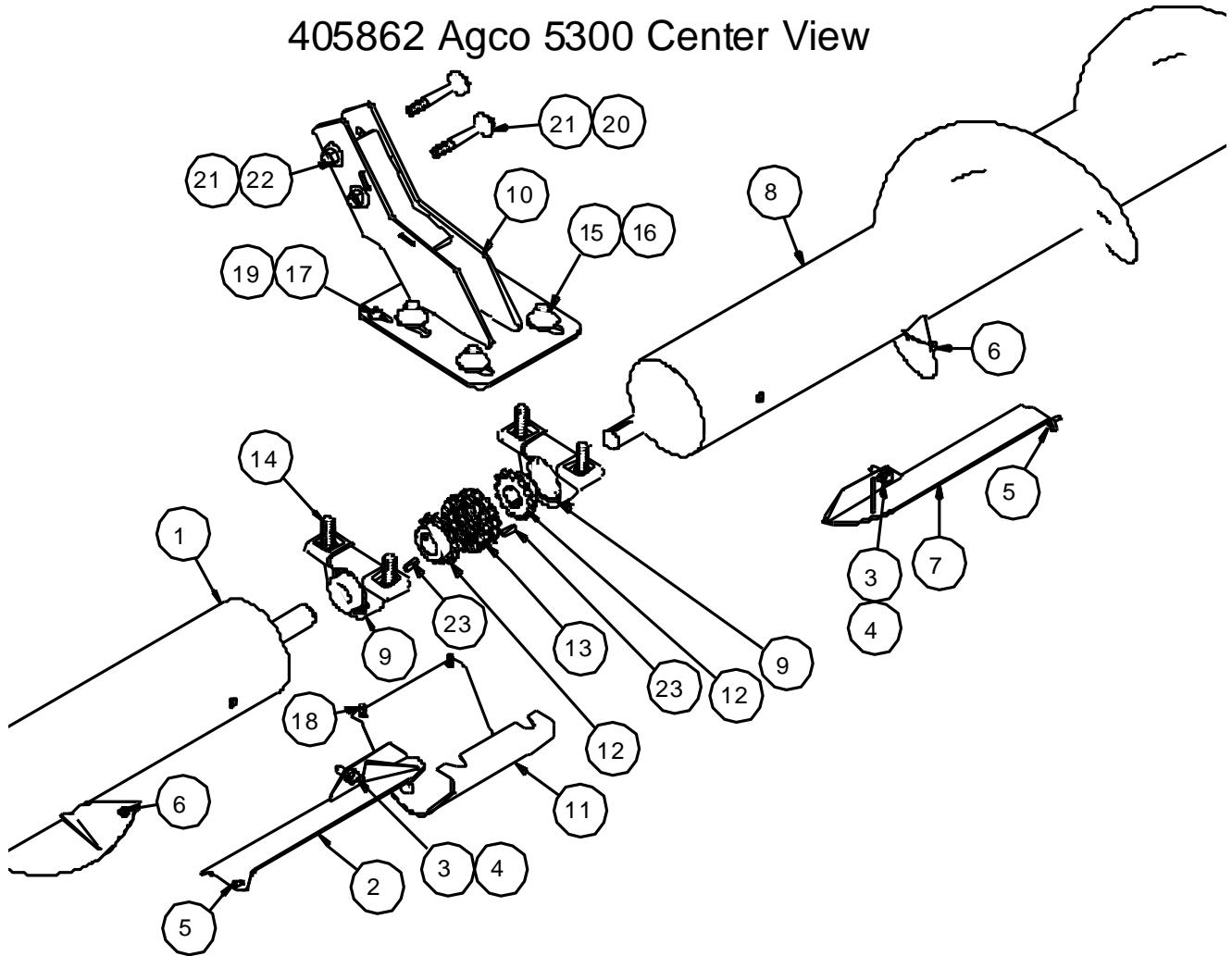
405862 Agco 5300 RH end view



ITEM	QTY	PART NUMBER	ITEM	QTY	PART NUMBER
1	1	407540 Agco 5300 RH end mount	9	4	100603 bolt 3 8NCx1 1 4 gr5 hex pltd
2	1	407105 direct drive motor adapter wldt	10	2	100703 bolt 1-2 X 2 gr5 pltd nc
3	1	117170 motor with flow control 5.9 danfoss	11	2	101106 flat washer 1/2"
4	1	407271 shim hyd motor mt AGCO 9250	12	4	102125 nut nylok 1/2" nc gr5 pltd
5	8	101106 washer flat 1/2"	13	4	100702 bolt 1/2nc 1 1/2 gr5 pltd hex
6	6	102125 1/2" nylock	14	1	407552 Agco 5300 Hyd Hose Assy
7	5	101145 washer lock 3/8"	15	1	407553 Agco 5300 Hyd Hose Assy
8	1	100405 bolt 1/4nc 1 1/2 gr5 pltd hex			

7.6. 405862 AGCO 5300 CENTER VIEW

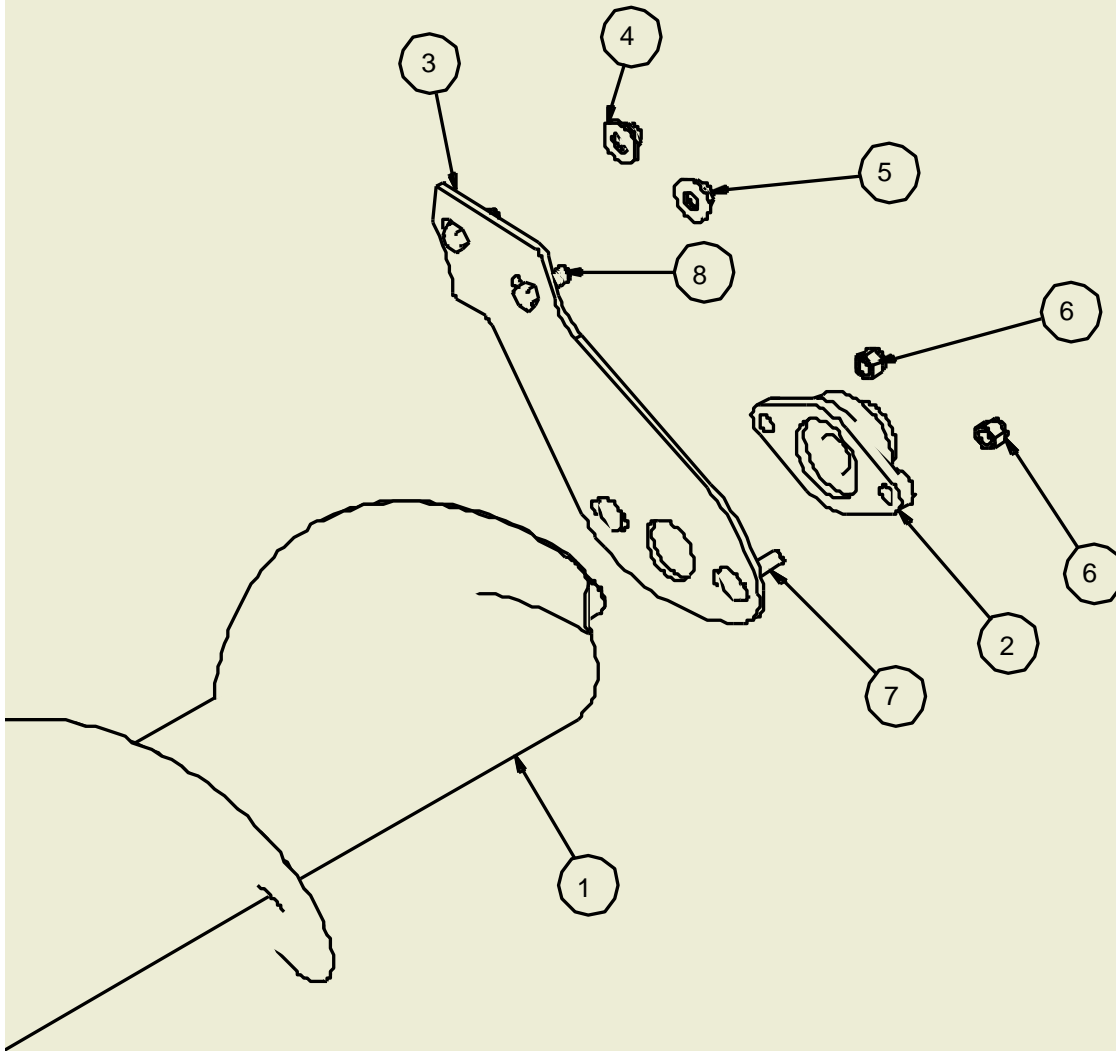
405862 Agco 5300 Center View



ITEM	QTY	PART NUMBER	ITEM	QTY	PART NUMBER
1	1	407541 Agco 5300 35ft Auger Assy RH 2015	13	1	114469
2	1	405725 flap bolt on wldt 3in RH	14	4	100965 carriage bolt 5/8" X 2-1/4" nc
3	2	100660 bolt 7-16 X 1 gr5 pltd nc	15	4	102127 nut nylok 5/8" nc gr5 pltd
4	2	101142 lock washer 7-16	16	4	101107 flat washer 5/8"
5	2	100966 Carriage Bolt 1-4 X 3-4 NC	17	2	102099 nut 1 4 nc nylock SS
6	2	102121 nut nylok 1/4" nc gr5 pltd	18	2	100402 BOLTS 1 4 NC 3 4 GR5 PLTD HEX
7	1	405726 flap bolt on wldt 3in LH	19	2	101103 flat washer 1/4"
8	1	407544 Agco 5300 35ft Auger Wldmt LH 2015	20	2	100707 BOLT 1 2NC 4 GR5 PLTD HEX
9	2	114471 Pillow Block Bearing Assy P207-SA207	21	8	101106 washer flat 1/2"
10	1	407547 Agco 5300 35 ft center mount wldt	22	6	102125 1/2" nylock
11	1	405087 plastic guard	23	2	405361 key 1/4" x 1/4" x 1"
12	2	114468 chain coupler 1-1/4" ID			

7.7. 405862 AGCO 5300 LH END VIEW

405862 Agco 5300 LH END VIEW



ITEM	QTY	PART NUMBER	ITEM	QTY	PART NUMBER
1	1	407544 Agco 5300 35ft Auger Wldmt LH 2015	5	6	102125 1/2" nylock
2	1	114483 Bearing 1.25 in FL207 2 bolt flat flg	6	4	102125 nut nylok 1/2" nc gr5 pltd
3	1	407550 Agco 5300 LH end mount	7	2	100943 carriage bolt 1-2 X 2 NC
4	8	101106 washer flat 1/2"	8	4	100702 bolt 1/2nc 1 1/2 gr5 pltd hex

8. WARRANTY

1. Ag Shield Manufacturing warrants each new Ag Shield cross auger over to be free from factory defects in material and workmanship under normal use and service, when set up and operated in accordance with factory instructions for one year from the date of delivery to the original purchaser.
2. Ag Shield's obligation under this warranty is limited to the supplying of replacement parts which are defective due to factory workmanship or material.
3. Your Ag Shield Dealer is responsible for providing warranty labour. Credit for required labour is specifically agreed to on an individual case basis.
4. The warranty is void on any unit which has been tampered with, or modified in any way not authorized in writing by the factory.
5. This warranty is void on any unit which is subject to misuse, negligence or accident, or which has had the serial number tampered or removed.
6. A "Warranty Claim Form" (sample at end of handbook) must be submitted to Ag Shield with returned parts in order for parts to be considered for warranty examination.
7. A warranty registration page from the front of this manual must be returned to the factory in order to qualify for warranty examination.
8. All returned parts must be sent to the factory freight prepaid, and warranty parts will be returned to you freight collect.
9. Replacement parts shipped pending receipt of parts for examination will be invoiced, and remain on your account until such time as examination indicates that a credit for those parts be issued or that payment is due.
10. Parts not returned for warranty examination within 30 days must be paid for at that time. Ag Shield will immediately reimburse any cash paid for items that are later determined defective.
11. Warranty terms and conditions are subject to provincial and state legislation.

WARRANTY CLAIM FORM

Ag Shield Mfg

Box 9, Benito,
 MB, R0L 0C0
 ph 800-561-0132
 fax 204-539-2130
 ph 204-539-2000i

Dealer		
Address		
City	State/Province	Zip/Postal

End User		
Address		
City	State/Province	

DATE OF SALE	DATE FAILED	REPAIR DATE	ACRES/HOURS	MODEL	SERIAL NUMBER
--------------	-------------	-------------	-------------	-------	---------------

LABOUR HOURS	LABOUR RATE	LABOUR AMOUNT	PARTS MUST BE RETURNED TO BENITO MB FREIGHT PREPAID TO BE CONSIDERED FOR WARRANTY. DATE SHIPPED		
--------------	-------------	---------------	---	--	--

QUANTITY ITEM	PART NUMBER	DESCRIPTION	PRICE EACH	TOTAL PRICE	DESCRIBE THE CAUSE OF FAILURE AND CORRECTIVE ACTION TAKEN	APPROVE /REJECT
1						
2						
3						
4						
5						
6						
7						
8						

I CERTIFY THAT THE INFORMATION IS ACCURATE AND THAT THE PARTS WERE REPLACED ON THE MACHINE	PARTS		DATE PARTS RECD	RECD BY
	LABOUR		ITEMS TO SUPPLIERS	
	TOTAL			

SHADED AREAS AG SHIELD USE ONLY ---PLEASE ADD DETAILS FOR ITEM NUMBERS ON BACK

