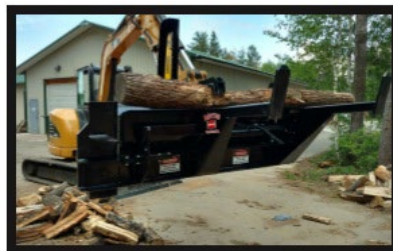




Are you standing around splitting wood? Why not do your wood splitting sitting down?



Features

- Simple to operate controls
- Sets up in minutes
- Auto chain oiler
- Multiple splitting head options available
- The most portable processor on the market
- 102" width – it can be legally transported attached to your skid steer
- Processes logs up to 10 feet in length and 16 inches in diameter

Advantages

- One-man operation
- Few moving parts
- Ready to go in minutes
- Stay-in-the-machine operation for safety and comfort
- Small, easy to store
- Can process right into a truck or trailer without a conveyor
- Totally portable; no set up or tear down to move or store

Easy to adjust and change cutting length
22" maximum cut length

Specifications

- Required minimum hydraulic flow – 15.5 Gallons Per Minute
- Required Minimum Pressure – 2850 PSI
- Length – 102 Inches
- Weight – 1310 lbs
- Universal Quick Attach Skid Steer Plate
- Universal wiring harness plugs into the power port of your machine

Uses

- Tree Services
- Firewood Operations
- Farmers
- Outdoor Boiler Owners
- Logging/Firewood
- Homeowner

Warranty

- 6 Months to 1 year Warranty
- Fast Factory Support

Productions

- 1 ½ - 2 Cords Per Hour

www.halversonwoodproducts.com

PRICED IN CANADIAN DOLLARS

PRICES ARE FOB HARRISTON, ONTARIO – DESIGN & PRICE ARE SUBJECT TO CHANGE WITHOUT NOTICE



**Compare us to the competition and you'll see why wood cutting & splitting is experiencing a
REVOLUTION!**

	<u>HWP-150</u>	<u>HWP-140B HD</u>	<u>HWP-120</u>
Length	Travel – 107", Working – 129"	Travel – 102", Working – 126"	Travel – 99", Working – 121"
Width	58"	55"	55"
Height	57"	51"	51"
Weight	1,638 lbs.	1450 lbs	975 lbs
Material	3.8" Steel	3/8" Steel	1/4" High Tensile Steel
Hydraulic	Flow: 15.5 gpm – max 20 gpm	Flow: 15.5 gpm – max 23 gpm	Flow: 12-18 gpm
Requirements	Pressure: 2850 psi Connections: 1-pressure, 1- return, and 1 case drain	Pressure: 2850 psi Connections: 1 pressure, 1 return and 1 case drain	Pressure: 2850 psi Connections: 1 pressure, 1 return and 1 case drain
Max Log Dia.	22"	15"	15"
Max Log Length	12"	12'	12'
Min Log Length	5'	6'	6'
Firewood Cut Lengths	Up to 22"	up to 22"	up to 22"
Saw Bar	Length: 31" Harvester Series	Length: 25" (642cm) Harvester	Length: 25" (642cm) Harvester
Saw Chain	.404 80 gauge, 18H Harvester Series	404 Pitch, 18H Harvester Series	404 Pitch, 18H Harvester Series
Saw Motor	Piston pump bent axis motor	Bent axis piston motor (more industrial)	Bent axis piston motor
Saw Oiler	Automatic 2 quart oil tank	Automatic 2 quart oil tank	Automatic 2 quart oil tank
Max Saw Cut	22"	18"	18"
Splitter Cylinder	4" bore x 24" stroke	Custom made 3.5" bore x 24" stroke	Std welded 3.5" bore x 24" stroke
Splitter Force	36,138 lbs	27,406 lbs	27,406 lbs
Splitting Wedge	4-way hydraulic – optional 6-way	4-way manually adjustable – optional 6 way	4-way fixed
In-Feed	Sliding trough carries log to wedge	Sliding trough carries log to wedge	Sliding trough carries log to wedge
Mounting	Universal Quick Attach: SAE Spec J2513	Universal Quick Attach: SAE Spec J2513	Universal Quick Attach: SAE Spec J2513
Measuring	Manually moveable measuring device	Manually moveable measuring device	None

PRICED IN CANADIAN DOLLARS

PRICES ARE FOB HARRISTON, ONTARIO – DESIGN & PRICE ARE SUBJECT TO CHANGE WITHOUT NOTICE



PRICELIST

Model	Description	Price [CDN]
*HWP-120	Processor/Fixed 4 way	\$15,042.00
*HWP-120	Processor/Adjusts 4 way	\$15,963.00
*HWP-120	Processor/Adjusts 6 way	\$16,274.00
*HWP-140B	Processor/Adjusts 4 way	\$25,550.00
*HWP-140B	Processor/Adjusts 6 way	\$25,862.00
*HWP-150	Processor/Adjusts 4 way	\$31,988.00
*HWP-150	Processor/Adjusts 6 way	\$32,300.00
*HWP-135	Grapple Saw	\$14,165.00
*HWP-WHS10	120 Cab Harness	\$695.00
*HWP-WHS8	140//150 Cab Harness	\$695.00
**	3' Cab Harness Extension	\$173.00
**	6' Cab Harness Extension	\$190.00
	Joystick Harness Kit	\$1,487.00
*HWP-2111	120/140 6-way Wedge	\$1,268.00
**HWP-2112	150 6-way Wedge	\$1,354.00
PARTS & ACCESSORIES		
**18HX078E	Harvester Chain Micro Chisel, 120/140	\$68.36
**18H-T-RF	Carbide Steel Chain, 120/140	\$474.69
**642RHFN104	Harvester 18HX Bar, 120/140	\$226.52
**28588A-Sharpener	Oregon Elec. Sure Sharp 12V	\$186.00
**HWP-SSRB1	Sure Sharp Replacement Bit	\$8.86
**802HSFN104	Harvestor Bar, 150	\$250.00
**18HX093-E	Harvestor Chain, 150	\$94.00
**18HKRF93DL	Carbide Chain, 150	\$578.00
	*1.33-15	**1.33-20-2

PRICED IN CANADIAN DOLLARS

PRICES ARE FOB HARRISTON, ONTARIO – DESIGN & PRICE ARE SUBJECT TO CHANGE WITHOUT NOTICE