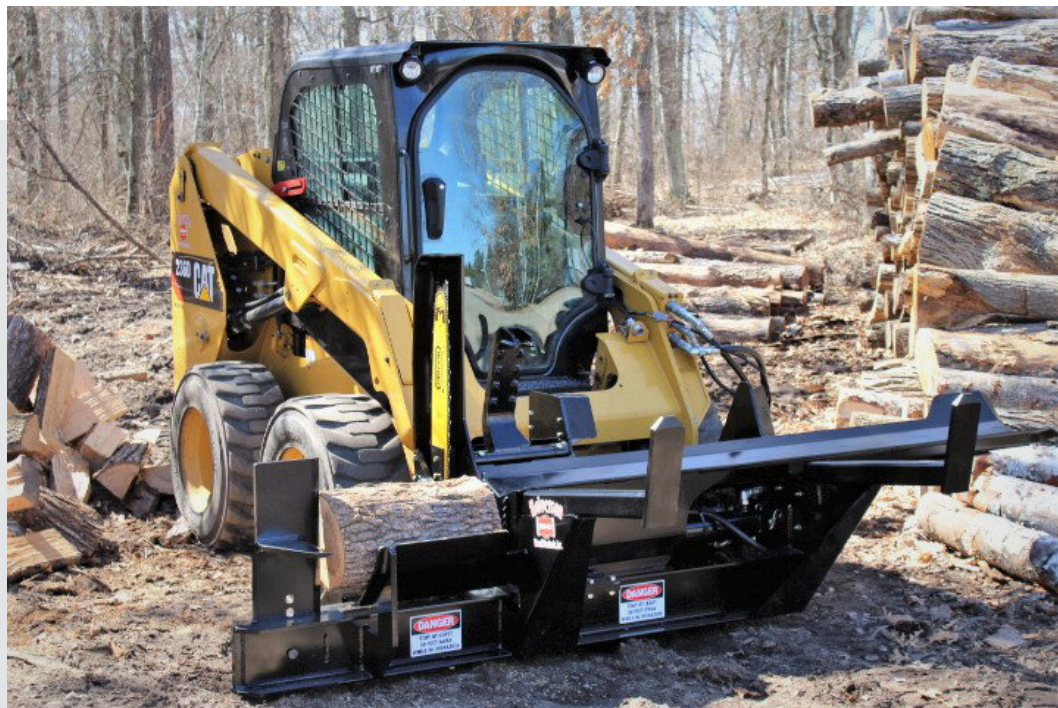


HWP-140B Firewood Processor

HWP-140B

Perfect for light commercial and residential use, the HWP-140B Firewood Processors truly makes the job hassle-free. When attached to a skid steer or other machine, it enables one person operating it to easily and efficiently perform wood cutting and splitting tasks. All from the comfort of the cab. Take the processor to the wood, instead of having to bring the wood to the processor! The mobility and efficiency of these Firewood Processors is a time saver!



The HWP-140B also comes in a Left Handed model to allow the operator better visibility with certain machines.



HWP-140B Firewood Processor

Specifications HWP-140B



SPECS	VALUE
LENGTH	Travel= 102" (259 cm) Working= 126" (320 cm)
WIDTH	55" (140 cm)
HEIGHT	51" (130 cm)
WEIGHT	1450 lbs. (658 kg)
MATERIAL	3/8" Steel
MINIMUM PRESSURE	2850 (196 bar)
FLOW	15-20 gpm (57 - 76 l/min)
CONNECTIONS	1-Pressure, 1-Return 1-Case Drain
MAX LOG DIAMETER	18" (46 cm)
MAX LOG LENGTH	12' (3.66 m)
MIN LOG LENGTH	4' (1.21 m)
FIREWOOD CUT LENGTH	Up to 22" (56 cm)
SAW BAR	25" (64cm) Harvester
SAW CHAIN	78 DL .404 pitch/18HX Series
SAW MOTOR	Bent Axis Piston (Industrial)
SAW OILER	Automatic 2 Qt (1.89 l) Tank
MAX SAW CUT	18" (46 cm)
SPLITTER CYLINDER	Custom 3.5" x 24" Stroke
SPLITTER FORCE	28,850 @ 3000 psi
SPLITTING WEDGE	4-way or 6-way Manually Adjustable
IN-FEED	Sliding Trough Carries Log to Wedge
MOUNTING	Universal Quick Attach SAE Spec J2513
MEASURING	Manual Moveable Device



Made in Northern Minnesota