

HCC, inc.

AFTERMARKET PRICE GUIDE 2022- 2023

**Orbit™ Trac II Reels - Flip Reel Kit
Tines - Paddle Tine
Gateway® Sieves/Chaffers
Level II Reels
Level II / ML Service Parts**

HCC, inc. 1501 First Ave.
1501 First Ave
Mendota, IL, 61342
Effective January 1, 2022

(815) 539-1832
www.hccinc.com

Guide

Table of Contents

| | |
|---|-----------------------|
| GENERAL | 1-1 |
| ORBIT™ TRAC II REELS | 2-1 |
| FLIP REEL KIT | 3-1 |
| TINES | 4-1 |
| PADDLE TINE | 5-1 |
| LEVEL II REELS | 6-1 |
| LEVEL II REELS - DIAGRAM & GUIDE SERVICE PARTS | 7-1 |
| CHANNEL BATS .. DISCONTIUNED..... | 8-1 |
| NOTES | 9-1 |



HCC, inc.

Aftermarket Price Guide

HCC, inc., a major innovator in the combine industry.



HCC, inc.

Ordering - Payment

HCC, inc. business hours are 7:00 AM - 4:00 PM (CST), Monday through Friday

Orders may be placed by the following:

E-mail: ctowne@hccinc.com

Direct Line: (815) 539-1832

Fax: (815) 539-3135

Mail: 1501 1st. Ave, Mendota, IL 61342

All orders must be placed through authorized HCC Distributors

Minimum Order: \$50.00

Prices and Specifications

Prices and specifications are subject to change without notice. All prices are F.O.B Mendota, IL.

This price guide supersedes all other HCC, inc. Aftermarket Price Guides.

Shipping - Shipping Claims

Orders in most instances will be shipped United Parcel Service (UPS) unless specified differently by the customer. Total size and weight of order can also cause the order to be shipped via commercial Truck. Shipping will be charged on all shipments. Please check immediately upon receipt and report any error at once. If a part of the shipment is missing or received in bad condition, you must note this fact on the carrier's receipt and make a claim with the carrier immediately. **Consignee is responsible for the damaged freight** if the bill of lading is signed upon delivery. Be certain to sign for the correct number of cartons.

Returns Policy

All merchandise being returned must have a Return Goods Authorization number (RGA#) which is obtained by contacting HCC, inc. Must provide the original PO and explanation of the return to receive the RGA#. All shipping cost are the responsibility of the Distributor unless it was determined there was a shipping error on HCC's part or a warranty issue. Returns must be in good condition, excluding warranty items. No returns will be accepted on special items ordered.

The following schedule will apply to all authorized returns (excluding shipping error and/or warranty items):

| <u>Days of Delivery</u> | <u>Restocking Fee</u> |
|-------------------------|-----------------------|
| 30 days | Full refund |
| 30 days - 1 year | 20% |
| 1 year - 2 years | 30% |
| 2 years - 3 years | 40% |
| After 3 years | No Returns |

All warranty issues must follow HCC, inc procedures before returning the product. NO Exception. Obtain procedures by contacting HCC, inc. All merchandise shipped to HCC, inc without prior authorization is subject of refusal and may be returned freight collect.



HCC, inc.



HCC, inc.

HCC, inc.
1501 First Ave.
Mendota, IL 61342
Phone: (815) 539-9371
Fax: (815) 539-3135



HCC, inc.

Limited Warranty

HCC, inc. warrants each new HCC, inc. product to be free from defects in material and workmanship. This warranty is applicable only for the normal service life expectancy of the product or components, not to exceed 12 consecutive months from the date of delivery of the new HCC, inc. product to the original purchaser.

Genuine HCC, inc. replacement parts and components will be warranted for 90 days from date of purchase, or the remainder of the original equipment warranty period, whichever is longer. There is no warranty fortines.

Under no circumstances will this warranty cover any merchandise or components thereof, which, in the opinion of the company, has been subjected to misuse, unauthorized modifications, alteration, an accident, or if repairs have been made with parts other than those obtainable through HCC, inc.

Our obligation under this warranty shall be limited to repairing or replacing, free of charge to the original purchaser, any part that, in our judgment, shall show evidence of such defect, provided further that such part shall be returned within thirty (30) days from date of failure to HCC, inc., routed through the dealer and distributor from whom the purchase was made, transportation charges prepaid.

This warranty shall not be interpreted to render HCC, inc. liable for injury or damages of any kind or nature to person or property. This warranty does not extend to the loss of crops, loss because of delay in harvesting, or any expense or loss incurred for labor, substitute machinery, rental, or for any other reason.

Except as set forth above, **HCC, inc. shall have no obligation or liability of any kind on account of any of its equipment and shall not be liable for special or consequential damages. HCC, inc. makes no other warranty, expressed or implied, and specifically, HCC, inc. disclaims any implied warranty of merchantability or fitness for a particular purpose. Some states or provinces do not permit limitations or exclusions of implied warranties or incidental or consequential damages, so the limitations or exclusion in this warranty may not apply.**

This warranty is subject to any existing conditions of supply which may directly affect our ability to obtain materials or manufacture replacement parts.

HCC, inc. reserves the right to make improvements in design or changes in specifications at any time, without incurring any obligation to owners of units previously sold.

No one is authorized to alter, modify, or enlarge this warranty nor the exclusion, limitations, and reservations.

Effective with products delivered to original user on or after January 1, 2006.



HCC, inc.

Orbit™ Trac II Reels

OEM Replacement Parts



HCC, inc.



- **Positively places crop into auger**
- **Reduces or eliminates slugging**
- **Resists wrapping in green crop**
- **On-farm installation in a few hours**

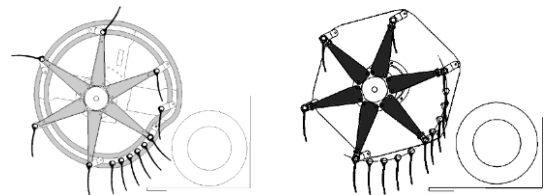
Harvest more crop in less time.

The Orbit™ Trac II Reel closes the gap between the reel and the auger to provide more control of crop entry into the header. By creating a continuous crop flow, the Orbit™ Trac II Reel provides the best overall performance, especially harvesting tough crops.

Construction and Operation

The Orbit™ Trac II Reel is tailored to today's high-performance headers. Crop flow is positive. Build-up and slugging are reduced.

The old-fashioned reel design has been replaced with a double-track system. The unique shape allows reel tines to swing directly past the auger. This pushes crop directly into the auger instead of dropping onto the header floor where it creates build-up. No more heavy build-up and no more slowing down to handle tough crops.



Orbit™ Trac II Reel Standard Reel

Installation is easy and can be done on equipment you already own. Designed as a retro-fit for all HCC tube-type reels built since 1990. ML 4-1/2" tine spacings or Level II 6" tine spacings are designed to work with the Orbit Kit. You can install it yourself in just a few hours, using the C-1096 Installation Instruction Manual.



HCC, inc.



HCC, inc.

HCC, inc., the original reel people and a
leading manufacturer of combine components in
North America.



HCC, inc.

Orbit Trac II Reel - Price List

| Part No. | Description | 2022 List Price |
|--|---|-----------------|
| AGCO⁴ | | |
| 031373 | AGCO/MF 8200 Series, 25' & longer (DBL) | \$ 3,662.86 |
| 031396 | AGCO/MF 8200 Series, 22' & shorter, (SGL) | \$ 1,921.78 |
| 031371 | AGCO 400, 500, 800, 8000 Series 25' & longer (DBL) | \$ 3,665.05 |
| 031372 | AGCO 400, 500, 800, 8000 Series 22' & shorter (SGL) | \$ 1,922.81 |
| 031388 | MF Draper (DBL) | \$ 3,662.93 |
| 031384 | MF 1859 (SGL) | \$ 1,921.87 |
| CASEIH⁵ | | |
| 031382 | CASEIH1010-1020 - 1994 & prior - 22' & longer ¹ | \$ 3,664.50 |
| 031383 | CASEIH1010-1020 - 1994 & prior - 20' & shorter ¹ | \$ 1,922.56 |
| 031380 | CASEIH1010-1020 - 1995-1997 - 22' & longer ³ | \$ 3,701.78 |
| 031381 | CASEIH1010-1020 - 1995-1997 - 20' & shorter ³ | \$ 1,941.97 |
| 031369 | CASEIH1010-1020 - 1998 & Newer - 22' & longer ² | \$ 3,701.54 |
| 031370 | CASEIH1010-1020 - 1998 & Newer - 20' & shorter ² | \$ 1,923.10 |
| 031376 | CASEIH2010-2020 - 22' - 35' (DBL) | \$ 3,664.34 |
| 031377 | CASEIH2010-2020 - 20' & shorter (SGL) | \$ 1,992.42 |
| 031533 | CASEIH3020 - 20' & shorter (SGL) | \$ 1,959.78 |
| 031532 | CASEIH3020 - 25' - 35' (DBL) | \$ 3,842.71 |
| Honey Bee | | |
| 031385 | Honey Bee (DBL) | \$ 3,698.52 |
| John Deere | | |
| 031367 | JD 900 Series - 25' & longer (DBL) | \$ 3,700.13 |
| 031368 | JD 900 Series - 22' & shorter (SGL) | \$ 2,131.68 |
| 031374 | JD 600 Series - Auger - 25' & longer (DBL) | \$ 3,698.15 |
| 031375 | JD 600 Series - Auger - 22' & shorter (SGL) | \$ 1,942.16 |
| 031603 | JD 640 Flex Draper - 40' | \$ 3,661.93 |
| New Holland | | |
| 031376 | NH 72C / 74C - 22' - 35' (DBL) | \$ 3,664.34 |
| 031377 | NH 72C / 74C - 20' & shorter (SGL) | \$ 1,922.42 |
| 031378 | NH 73C - 22' & longer (DBL) | \$ 3,664.97 |
| 031379 | NH 73C - 20' & shorter (SGL) | \$ 1,922.76 |
| 031400 | NH 971/ 973 - 25' & longer (DBL) | \$ 3,664.39 |
| 031401 | NH 971/ 973 - 22' & shorter (SGL) | \$ 1,922.47 |
| 031532 | NH CF740 - 22' & longer (DBL) | \$ 3,842.71 |
| 031533 | NH CF740 - 20' & shorter (SGL) | \$ 1,959.78 |
| Orbit Trac II Steel Track⁶ | | |
| 031410 | Orbit Trac II Steel Track Update Package | \$ 727.34 |

¹ For 1010 headers with S/N below JJC0200000,
For 1020 headers with S/N below JJC0215000 (1994 and prior).

² For 1010 headers with S/N JJC0300001 & CBJ023001 and up,
For 1020 headers with S/N JJC0315001 & CBJ023003 and up (1998 and later).

³ For 1010 headers with S/N JJC0200001 - JJC0300000,
For 1020 headers with S/N JJC0215001 - JJC0315000 (1995-1997).

⁴ Fits 400 Series and newer. 25' and longer fit 35'.

⁵ Verify single or double eccentric reel. ⁶ All Metal Track as of March 2019

Note: The OrbitTM Trac II Reel is designed **only** for Level II and ML HCC, inc. tube- type reels. They are original equipment on above headers since 1990.



HCC, inc.

HCC, inc., the original reel people and a leading manufacturer of combine components in North America.



HCC, inc.

Orbit Trac II Reel - Complete Reels Price List

| Part No. | Description | 2022 List Price | 2022 Total List |
|--------------------------------|--|-----------------|-----------------|
| AGCO | | | |
| 031392 | 25' * & 30' Orbit Attaching Package | \$ 5,447.76 | \$ 8,510.46 |
| 030561 | 25' Reel Bat Package - Level II | \$ 3,062.70 | |
| 030581 | 30' Reel Bat Package - Level II | \$ 3,545.16 | \$ 8,992.82 |
| 031397 | 25' * & 30' Orbit Attaching Pkg. - 8200 Model | \$ 5,305.70 | \$ 8,368.40 |
| 030561 | 25' Reel Bat Package - Level II | \$ 3,062.70 | |
| 030581 | 30' Reel Bat Package - Level II | \$ 3,545.16 | \$ 8,850.86 |
| 031395 | 35' Orbit Attaching Package - 8200 Model | \$ 6,584.23 | \$ 11,700.39 |
| 032082 | 35' Reel Bat Package - Level II - 8200 Model | \$ 5,116.16 | |
| CASEIH 1020 | | | |
| 031387 | 25' * & 30' Orbit Attaching Package¹ | \$ 5,685.70 | \$ 8,748.40 |
| 030561 | 25' Reel Bat Package - Level II | \$ 3,062.70 | |
| 030581 | 30' Reel Bat Package - Level II | \$ 3,545.16 | \$ 9,230.86 |
| CASEIH 2020 | | | |
| 031393 | 25' * & 30' Orbit Attaching Package | \$ 5,676.95 | \$ 8,677.43 |
| 030560 | 25' Reel Bat Package - Level II | \$ 3,000.48 | |
| 030580 | 30' Reel Bat Package - Level II | \$ 3,337.84 | \$ 9,014.79 |
| 031398 | 35' Orbit Attaching Package | \$ 6,666.34 | \$ 11,791.68 |
| 032023 | 35' Reel Bat Package - Level II | \$ 5,125.34 | |
| CASEIH 3020 / CNH CF740 | | | |
| 031534 | 25' * & 30' Orbit Attaching Package | \$ 5,932.61 | \$ 8,780.40 |
| 030562 | 25' Reel Bat Package - Level II | \$ 2,847.79 | |
| 030582 | 30' Reel Bat Package - Level II | \$ 3,569.64 | \$ 9,502.25 |
| 031535 | 35' Orbit Attaching Package | \$ 7,170.92 | \$ 12,296.26 |
| 032023 | 35' Reel Bat Package - Level II | \$ 5,125.34 | |
| John Deere 600 | | | |
| 031389 | 25' * & 30' Orbit Attaching Package | \$ 5,469.19 | \$ 8,316.98 |
| 030562 | 25' Reel Bat Package - Level II | \$ 2,847.79 | |
| 030582 | 30' Reel Bat Package - Level II | \$ 3,569.64 | \$ 9,038.83 |
| 031402 | 35' Orbit Attaching Package | \$ 6,808.38 | \$ 11,933.72 |
| 032023 | 35' Reel Bat Package - Level II | \$ 5,125.34 | |
| John Deere 900 | | | |
| 031390 | 25' * & 30' Orbit Attaching Package | \$ 5,585.08 | \$ 8,432.87 |
| 030562 | 25' Reel Bat Package - Level II | \$ 2,847.79 | |
| 030580 | 30' Reel Bat Package - Level II | \$ 3,337.84 | \$ 8,922.92 |

¹ For headers with S/N JJC0315001 & CBJ023003 and later.

* If using on 25' - extra parts of 6 Reel Arms and 3 Anchor Plates



HCC, inc.

HCC, inc., 1501 First Ave., Mendota, IL, 61342 - (815) 539-9371 - www.hccinc.com



HCC, inc.

HCC, inc., the original reel people and a leading manufacturer of combine components in North America.



HCC, inc.

Orbit Trac II Reel - Service Parts - Brackets Price List

| Part No. | Description | Orbit Reel Kit | 2022 | |
|---------------------------|----------------------|--|----------|------------|
| | | | Item No. | List Price |
| AGCO | | | | |
| 783994 | AGCO - Bracket LH | 031371, 031372, 031392 | 29 | \$ 182.29 |
| 783995 | AGCO - Bracket RH | 031371, 031392 | 28 | \$ 182.29 |
| 784037 | AGCO - Bracket LH | 031388 | 29 | \$ 209.63 |
| 784038 | AGCO - Bracket RH | 031388 | 28 | \$ 209.63 |
| 784205 | AGCO - Bracket LH | 031373, 031395, 031396, 031397 | 29 | \$ 145.75 |
| 784206 | AGCO - Bracket RH | 031373, 031395, 031397 | 28 | \$ 145.75 |
| 784027 | MF 1859 - Bracket LH | 031384 | 29 | \$ 190.59 |
| CASEIH | | | | |
| 783990 | CASEIH - Bracket LH | 031369, 031370, 031387 | 29 | \$ 187.42 |
| 783989 | CASEIH - Bracket RH | 031369, 031387 | 28 | \$ 323.60 |
| 784015 | CASEIH - Bracket LH | 031380, 031381 | 29 | \$ 276.93 |
| 784016 | CASEIH - Bracket RH | 031380 | 28 | \$ 459.26 |
| 784024 | CASEIH - Bracket LH | 031382, 031383 | 29 | \$ 172.97 |
| 784025 | CASEIH - Bracket RH | 031382 | 28 | \$ 179.17 |
| 784365 | CASEIH - Bracket LH | 031532, 031533, 031534, 031535 | 29 | \$ 310.88 |
| 784366 | CASEIH - Bracket RH | 031532, 031534, 031535 | 28 | \$ 406.13 |
| CASEIH/New Holland | | | | |
| 784022 | CASEIH/NH Bracket LH | 031376, 031377, 031393, 031398, 031400, 031401 | 29 | \$ 168.22 |
| 784023 | CASEIH/NH Bracket RH | 031376, 031393, 031398, 31400 | 28 | \$ 168.22 |
| Honey Bee | | | | |
| 784028 | HB - Bracket LH | 031385 | 29 | \$ 95.62 |
| 784029 | HB - Bracket RH | 031385 | 28 | \$ 95.62 |
| John Deere | | | | |
| 783980 | JD900 Bracket LH | 031367, 031390 | 29 | \$ 166.06 |
| 783981 | JD900 Bracket RH | 031367, 031368, 031390 | 28 | \$ 166.06 |
| 784009 | JD600 Bracket LH | 031374, 031375, 031389, 031402 | 29 | \$ 287.61 |
| 784010 | JD600 Bracket RH | 031374, 031389, 031402 | 28 | \$ 471.34 |
| New Holland | | | | |
| 784017 | NH Bracket LH | 031378, 031379 | 29 | \$ 197.85 |
| 784018 | NH Bracket RH | 031378 | 28 | \$ 197.85 |

Note: See installation/assembly procedure and parts book (C-1096-04).





HCC, inc.

HCC, inc., the original reel people and a
leading manufacturer of combine components in
North America.



HCC, inc.

Orbit Trac II Reel - Service Parts - Price List

| Part No. | Description | | 2022 | |
|----------|---|--|----------|---------------------|
| | | | Item No. | List Price |
| 784064 | Main Support Section - Orbit | Before Jan 1, 2010 - All Plastic | A | \$ 204.23 |
| 784281 | Main Support Section - Orbit Trac II | After Jan 1, 2010 - lower steel track - upper plastic | A | \$ 194.09 |
| 483310 | Front Support Section | All Orbit Kit Part number on Pg. 2-2 | B | \$ 40.89 |
| 483311 | Rear Support Section * | All Orbit Kit Part number on Pg. 2-2 | C | \$ 43.59 |
| 483312 | Connecting Plate* | All Orbit Kit Part number on Pg. 2-2 | D | \$ 12.12 |
| 784056 | Support Hub Assy - RH | 031367, 031368, 031371, 031376, 031378, 031385, 031400 | E | \$ 101.59 |
| 784057 | Support Hub Assy - LH | 031367, 031369-72, 031378-79, 031380-85, 031400-01, 031532-33 | E | \$ 101.59 |
| 784058 | Support Hub Assy - RH | 031369, 031376, 031380, 031382, 031532 | E | \$ 111.96 |
| 784059 | Support Hub Assy - RH | 031374 | E | \$ 124.42 |
| 784060 | Support Hub Assy - LH | 031374, 031375 | E | \$ 114.88 |
| 784061 | Support Hub Assy - LH | 031376, 031377 | E | \$ 111.96 |
| 784062 | Support Hub Assy - LH | 031388 | E | \$ 116.65 |
| 784063 | Support Hub Assy - RH | 031388 | E | \$ 116.65 |
| 784455 | Support Hub Assy - LH (JD 40' Draper only) | 031602, 031603 | E | \$ 207.08 |
| 784456 | Support Hub Assy - LH (JD 25'-35' Draper only) | 031602 | E | \$ 218.20 |
| 784457 | Support Hub Assy - RH (JD 40' Draper only) | 031603 | E | \$ 207.08 |
| 784143 | Support Hub Assy - RH | 031373 | E | \$ 212.60 |
| 784144 | Support Hub Assy - LH | 031373 | E | \$ 212.60 |
| 483993 | Inner Section (Replaced 483238) * | All Orbit Kit Part number on Pg. 2-2 | 3 | \$ 153.82 |
| 483994 | Outer Section (Replaced 483239) * | All Orbit Kit Part number on Pg. 2-2 | 4 | \$ 168.72 |
| 483996 | RH Inner Action Section - Orbit (Replaced 483261) | Before Jan 1, 2010 - All Metal | 5 | \$ 160.82 |
| 483995 | RH Outer Action Section - Orbit (Replaced 483241) | Before Jan 1, 2010 - All Metal | 6 | \$ 183.06 |
| 483470 | RH Inner Action Section - Orbit TracII | 031367-69, 031374, 031376, 031378, 031380, 031382, 031385, 034100, 031532, 031602-03 | 5 | \$ 216.98 |
| 483471 | RH Outer Action Section - Orbit TracII | 031367-69, 031374, 031376, 031378, 031380, 031382, 031385, 034100, 031532, 031602-03 | 6 | \$ 223.57 |
| 483997 | LH Inner Action Section - Orbit (Replaced 483273) | Before Jan 1, 2010 - All Plastic Main Support | 7 | \$ 173.64 |
| 483998 | LH Outer Action Section - Orbit (Replaced 483274) | Before Jan 1, 2010 - All Plastic Man Support | 8 | \$ 173.64 |
| 483468 | LH Inner Action Section - Orbit TracII | 031367, 031369-70, 031374-83, 031385, 031400-01, 031532-33, 031602-03 | 7 | \$ 216.98 |
| 483469 | LH Outer Action Section - Orbit TracII | 031367, 031369-70, 031374-83, 031385, 031400-01, 031532-33, 031602-03 | 8 | \$ 223.67 |
| 206071 | Screw - Flathead Socket Cap M10X45) * | | 9 | \$ 1.70 |
| 483275 | Spacer (19.5 x 12.7 x 18.3) * | | 10 | \$ 4.14 |
| 212412 | Nut - Pre Torq. Hex Lock (M10) * Box of 100 | Required MOQ 100 | 11 | \$.68 |
| 243719 | Bearing - Roller Ball (ML, LII, Orbit) * | Required MOQ 75 | 12 | \$ 28.83 |
| 481497 | Spacer - Tubing (.75"X2.06") * | | 14 | \$ 6.76 |
| 243686 | Roller - Reel Support * | 2023-Price \$46.51 | 15 | \$ 12.41 |
| 202190 | Bolt - Hex Head (3/8-16X1.0") | JD 900 Series only | 17 | \$.53 |
| 483301 | Bracket - Stop Top Reverse * | | 22 | \$ 13.32 |
| 483302 | Bracket - Stop Bottom Reverse * | | 23 | \$ 15.77 |
| 202814 | Bolt - Hex Head (M10X70) * | | 24 | \$ 1.34 |

* Can be used for both Orbit Track and Orbit Trac II

Note: See installation/assembly procedure and parts book (C-1096-04).





HCC, inc.

HCC, inc., the original reel people and a leading manufacturer of combine components in North America.



HCC, inc.

Orbit Trac II Reel - Service Parts - Price List

| Part No. | Description | Item No. | 2022 | |
|----------|-------------------------------|----------|----------|------------|
| | | | Item No. | List Price |
| 214244 | Washer - Belleville (12mm) * | | 25 | \$ 6.84 |
| 201145 | Bolt - Carriage (M12X1.75X40) | | 30 | \$ 8.18 |
| 202807 | Bolt - Hex Head (M10X25) * | | 31 | \$ 1.04 |
| 212404 | Nut - Hex (M12X1.75) | | 32 | \$ 1.36 |

* Can be used for both Orbit Track and Orbit Trac II

Note: See installation/assembly procedure and parts book (C-1096-04).





- Eliminates crop wrapping around bat tubes
- Designed to fit HCC tube type reels built since 1990

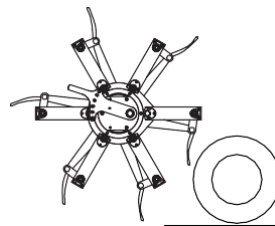
- To improve performance in some crop conditions, end shield may be desired.



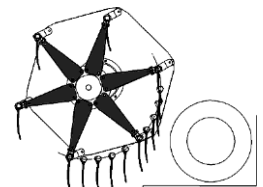
Construction and Operation

The Flip Reel Kit is designed to eliminate wrapping around bat tubes and is particularly effective in canola and other tall, stringy crops.

Installation is easy and can be done on equipment you already own. Designed as a retro-fit for all HCC tube-type reels built since 1990. ML 4-1/2" tine spacing or Level II 6" tine spacings are designed to work with the Orbit Kit. You can install it yourself in just a few hours using the Installation Instruction Manual.



Flip Reel



Standard Reel



HCC, inc.

HCC, inc., the original reel people and a
leading manufacturer of combine components in
North America.



HCC, inc.

Flip Reel Kit - Price List

| Part No. | Description | 2022 List Price |
|--------------------|---|--------------------|
| AGCO | | |
| 031510 | AGCO 8200, 9250 - Auger 35'- 40' (DBL Ecc) * | \$ 2,707.42 |
| 031521 | AGCO 8200, 9250 - Auger 22' & shorter (SGL Ecc) | \$ 1,460.69 |
| 031515 | AGCO 400, 500, 800, 8000 Series, 25' & longer (DBL Ecc.) | \$ 2,490.54 |
| 031520 | AGCO 400, 500, 800, 8000 Series, 22' & shorter (SGL Ecc.) | \$ 1,352.96 |
| 031511 | AGCO 5000(36') , 8000 Series - Draper (DBL Ecc.) | \$ 2,558.40 |
| 031522 | AGCO 8000 Series - Draper (SGL Ecc.) | \$ 1,386.91 |
| CNH | | |
| 031516 | CNH 1010,1020,3020 - 25' & longer (DBL Ecc.) | \$ 2,517.08 |
| 031520 | CNH 1010,1020,3020 - 22' & shorter (SGL Ecc.) | \$ 1,352.96 |
| 031517 | CNH 2010,2020 - 25' & longer (DBL Ecc.) | \$ 2,517.08 |
| 031523 | CNH 2010,2020 - 22' & shorter (SGL Ecc.) | \$ 1,378.06 |
| Honey Bee | | |
| 031357 | HB - Clamp Mounting - 25' & longer (DBL Ecc.) | \$ 2,744.30 |
| 031513 | HB - Bracket Mounting - 25' & longer (DBL Ecc.) | \$ 2,770.87 |
| John Deere | | |
| 031519 | JD900 Series - Auger - 25' & longer (DBL Ecc.) | \$ 3,327.10 |
| 031525 | JD900 Series - STD Reel - 22' & shorter (SGL Ecc.) | \$ 1,993.20 |
| 031518 | JD600 Auger only - JD 900 Draper only - 25' & longer | \$ 2,633.64 |
| 031524 | JD600 Series - STD Reel - 22' & shorter (SGL Ecc.) | \$ 1,419.36 |
| 031365 | JD625, JD630, JD635 - Draper (DBL Ecc.) | \$ 2,687.71 |
| 031351 | JD640D, JD 645FD - Draper (Split) | \$ 2,677.02 |
| New Holland | | |
| 031517 | NH 72C,74C - 25' & longer (DBL Ecc.) | \$ 2,517.08 |
| 031523 | NH 72C,74C - 22' & shorter (SGL Ecc.) | \$ 1,378.06 |
| 031515 | NH 971,973,73C - 25' & longer (DBL Ecc.) | \$ 2,490.54 |
| 031520 | NH 971, 973, 73C, 740CF - 22' & shorter (SGL Ecc.) | \$ 1,352.96 |
| 031516 | NH 740CF - 25' & longer (DBL) | \$ 2,517.08 |

* Clamp mount only





HCC, inc.

HCC, inc., the original reel people and a leading manufacturer of combine components in North America.



HCC, inc.

Flip Reel Service Parts

| Part No. | Description | Flip Kits | Item No. | 2022 List Price |
|----------|---|--------------------------------------|----------|-----------------|
| 480750 | Ring – Ecc. Control (Flip-ML6) | | 1 | \$ 130.95 |
| 483475 | Ring – Ecc. Center Arm Att. (Replaced 483411) | | 2 | \$ 188.36 |
| 784249 | Arm – Fixed Assy w/ Male-Female Ecc. Bearing | | 3 | \$ 103.88 |
| 784250 | Arm – Pivot Assy w/ Male-Female Ecc. Bearing | | 4 | \$ 114.67 |
| 784251 | Arm - Flip Reel Ecc. | | 5 | \$ 89.17 |
| 243720 | Bearing - Male Threaded Ecc. (Plastic) | | 6 | \$ 3.43 |
| 243721 | Bearing - Female Threaded Ecc. (Plastic) | | 7 | \$ 2.65 |
| 204800 | Screw - Socket Head Shoulder (M12X1.75X50) | | 8 | \$ 5.60 |
| 483440 | Spacer (19.05X12.70X26.00) | | 9 | \$ 6.29 |
| 784185 | Frame Assy - Ecc. Roller (Flip) | 031513, 031515-17, 031519-20, 031525 | 10 | \$ 195.64 |
| 784244 | Frame Assy - Ecc. Roller (Flip) | 031510, 031521 | 10 | \$ 322.09 |
| 784289 | Frame Assy - Ecc. Roller (Flip) | 031511, 031522 | 10 | \$ 216.07 |
| 784299 | Frame Assy - Ecc. Roller (Flip) | 031357 | 10 | \$ 156.77 |
| 784307 | Frame Assy - Ecc. Roller (Flip) | 031516-17, 031523 | 10 | \$ 209.68 |
| 784310 | Frame Assy - RH Ecc. Roller (Flip) | 031518 | 10 | \$ 279.08 |
| 784312 | Frame Assy - LH Ecc. Roller (Flip) | 031518, 031524 | 10 | \$ 265.15 |
| 784386 | Frame Assy - LH Ecc. Roller (Flip) | 031365, 031351 | 10 | \$ 210.66 |
| 784387 | Frame Assy - RH Ecc. Roller (Flip) | 031351 | 10 | \$ 213.32 |
| 784388 | Frame Assy - RH Ecc. Roller (Flip) | 031365 | 10 | \$ 226.74 |
| 483555 | Spacer - Fixed Arm (Flip) | | 11 | \$ 14.18 |

Note: See instruction/assembly procedure and parts book (C-1158 Sept.2013) Page 7

End Shield - Will Fit All Flip Reels

| Part No. | Description | 2022 List Price |
|----------|--------------------------------|-----------------|
| 031591 | End Shield - Double | \$ 868.84 |
| 031600 | End Shield - Single | \$ 495.60 |
| 483473 | Shield Section - Flip Reel End | \$ 31.26 |
| 483474 | Arm Shield Att. | \$ 22.34 |

Note: Instruction C-1179 & C-1180



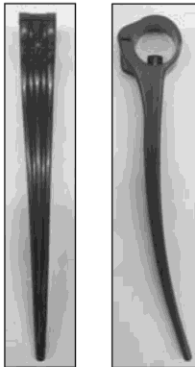
HCC, inc.

HCC, inc., 1501 First Ave., Mendota, IL, 61342 - (815) 539-9371 - www.hccinc.com

Construction

1 NEW 2017 - HEAVY DUTY TINE

Level II reels have a 1-3/8" (35 mm) tube with 1/2" (12.7 mm) hex holes spaced 6" (152 mm) apart. The heavy duty tines have a hex nub that fits into a hex hole in the tube. The overall length of the heavy duty tine is 11-7/8" (302 mm) and the strap width is 1-1/8" (29mm).



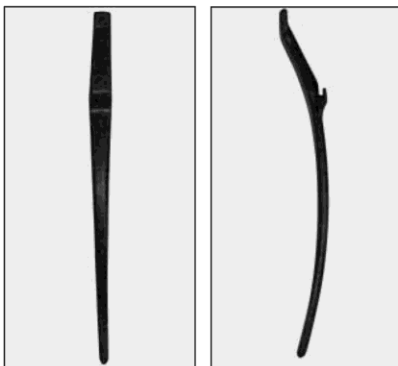
2 Level II reels have a 1-3/8" (35 mm) tube with 1/2" (12.7 mm) hex holes spaced 6" (152 mm) apart. The tines have a hex nub that fits into a hex hole in the tube.



3 ML Reels have a 1-3/8" (35 mm) tube with 3/8" (10 mm) round holes spaced approximately 4-1/2" (114 mm) apart. The tines have a round nub that fits into a round hole in the tube.



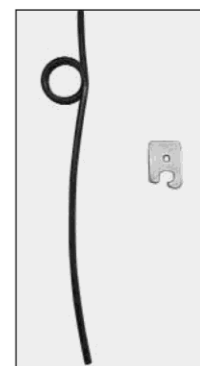
4 Polytine reels have a teardrop shaped metal bat with notches spaced 4-1/2" (114 mm) apart. The tines fit into notches and are fastened to the back of the metal bat approximately 3" (76 mm) above the notch.



5 The Love reel has a sheet metal bat and the tine fastens over the bottom edge. There is a projection that fits into a hole on the front of the bat approximately 2-1/2" (64 mm) above the edge. The Love reel is not manufactured by HCC, inc.



6 Wood bat reels have a wood bat with steel tines spaced approximately 4-1/2" (114 mm) apart. The tines are pressed into the bat and there is a metal clip riveted to the bat to provide support to the tine.





HCC, inc.

Tines

OEM Replacement Parts



HCC, inc.

Tines Price List

| | Part No. | Reel Type | Description | MOQ | 2022 List Price |
|---|----------|-----------|---|---------|-----------------|
| 1 | 224081 | LII - 6" | Plastic Fgr. Tines - Heavy Duty ² | 150 Box | \$ 4.13 |
| | 208100 | LII - 6" | Screw for Heavy Duty Tines* | 500 Box | \$.13 |
| 2 | 224047 | LII - 6" | Plastic Fgr. Repair - Full Bat - Pipe Type* | 130 Box | \$ 2.82 |
| | 224048 | LII - 6" | Plastic Fgr. Repair - LH Bat - Pipe Type* | 150 Box | \$ 3.05 |
| | 224049 | LII - 6" | Plastic Fgr. Repair - RH Bat - Pipe Type* | 150 Box | \$ 3.05 |
| | 224050 | LII - 6" | Plastic Fgr. Repair - No Bat - Pipe Type* | 150 Box | \$ 3.05 |
| | 208065 | LII - 6" | Screw for plastic tines ¹ (3.5 x 1.3 x 16mm) * | 500 Box | \$.13 |
| 3 | 224016 | ML - 4.5" | Plastic Fgr. Repair - Full Bat - Pipe Type* | 180 Box | \$ 2.27 |
| | 224017 | ML - 4.5" | Plastic Fgr. Repair - RH Bat - Pipe Type* | 250 Box | \$ 2.72 |
| | 224018 | ML - 4.5" | Plastic Fgr. Repair - LH Bat - Pipe Type* | 250 Box | \$ 2.72 |
| | 224019 | ML - 4.5" | Plastic Fgr. Repair - No Bat - Pipe Type* | 250 Box | \$ 3.56 |
| | 208065 | ML - 4.5" | Screw for plastic tines ¹ (3.5 x 1.3 x 16mm) * | 500 Box | \$.13 |
| 4 | 782018 | Polytine | Plastic Fgr. Repair - 10 pk of 224014 w/ screws* | 10 Pkg. | \$ 31.33 |
| | 782123 | Polytine | Plastic Fgr. Repair - 500 pk of 224014 w/ screws* | 500 Box | \$ 883.09 |
| | 208060 | Polytine | Screw for plastic tines ¹ (8.32 x .75) | | \$.44 |
| 5 | 782094 | LOVE | Plastic Fgr. Repair - 10 pk of 224015 w/ screws* | 10 Pkg. | \$ 40.73 |
| | 782124 | LOVE | Plastic Fgr. Repair - 275 pk of 224015 w/ screws* | 275 Box | \$ 743.05 |
| | 208064 | LOVE | Screw for plastic tines ¹ (6 x .62) | | \$.19 |
| 6 | 480056 | Wood Bat | Steel Tine Bat | | \$ 2.88 |
| | 480057 | Wood Bat | Steel Tine Clip | | \$.34 |

* Order as each - Must order MOQ quantity.

¹ Screws no longer offered with tines - order separately.² Fits any HCC 1-3/8" diameter tube with hex hub attachment.



HCC, inc.

Tines Service Parts

OEM Replacement Parts



HCC, inc.

Miscellaneous Tine Price List

Plastic Fingers

| Part No. | Description | 2022 List Price |
|----------|--|-----------------|
| 007650 | KIT-Plastic Aux. Pickup Tines (12 count of 224013 w/ hardware) | \$ 304.48 |
| 007651 | KIT-Screws #10 for Polytines (50 Screws) | \$ 32.32 |
| 783128 | KIT-Finger (6 EA - 224016, 224017, 224018 with screws) | \$ 64.74 |
| 224013 | Finger - Plastic Aux. | \$ 7.47 |
| 224014 | Finger - Polytine for Tear Drop Bats (Replaces 224012) | \$ 2.34 |
| 224015 | Finger - Plastic Repair (JI) | \$ 4.40 |
| 277481 | Finger - Plastic Aux. Retainer | \$ 4.86 |
| 277484 | Finger - Plastic Aux. Bracket | \$ 13.50 |

Steel Fingers

| Part No. | Description | 2022 List Price |
|----------|--|-----------------|
| 007559 | KIT-Pkg. Aux. Steel Pickup (6 RH-780120 & 6 LH-780110) | \$ 501.71 |
| 007634 | KIT-Pkg. Hdw Bushing Conversion Kit (Removing ML5 & ML6 Bat Fingers) | \$ 130.05 |
| 224051 | Tine - Steel, Double Coil (Over Center Mount) | \$ 17.79 |
| 224052 | Tine - Steel, Single Coil (Over Center Mount) | \$ 11.63 |
| 224065 | Tine - Steel - LH (9", LVL II) (2004 and later) | \$ 5.12 |
| 224066 | Tine - Steel - RH (9", LVL II) (2004 and later) | \$ 5.79 |
| 481087 | Tine - Steel Aux. RH Pickup Finger | \$ 9.72 |
| 481088 | Tine - Steel Aux. LH Pickup Finger | \$ 9.02 |
| 780026 | Tine - Steel Aux. RH Pickup Finger Assy. | \$ 34.87 |
| 780027 | Tine - Steel Aux. LH Pickup Finger Assy. | \$ 35.01 |
| 780110 | Tine - Steel Aux. LH Pickup Finger Assy. | \$ 32.23 |
| 780120 | Tine - Steel Aux. RH Pickup Finger Assy. | \$ 33.54 |
| 781344 | Tine - Steel Aux. RH Assy. SP | \$ 47.25 |
| 781345 | Tine - Steel Aux. LH Assy. SP | \$ 47.25 |



HCC, inc.

HCC, inc., 1501 First Ave., Mendota, IL, 61342 - (815) 539-9371 - www.hccinc.com



HCC, inc.

Paddle Tine

Tine Replacement System

OEM Replacement Parts



HCC, inc.

The “Paddle” is a cost-effective alternative to the standard pickup reel tine when crop conditions make harvesting difficult and inefficient.

Construction and Operation

The “Paddle’s” 6” width lifts and feeds crop that standard tines miss. With full crop contact, feeding into the header is positive and even. Increase your harvest in light, sparse, or special crop conditions.

The “Paddle” is designed to provide a complete sweep of the header with each reel rotation. By limiting the number of “Paddles” used, you save installation time and money.

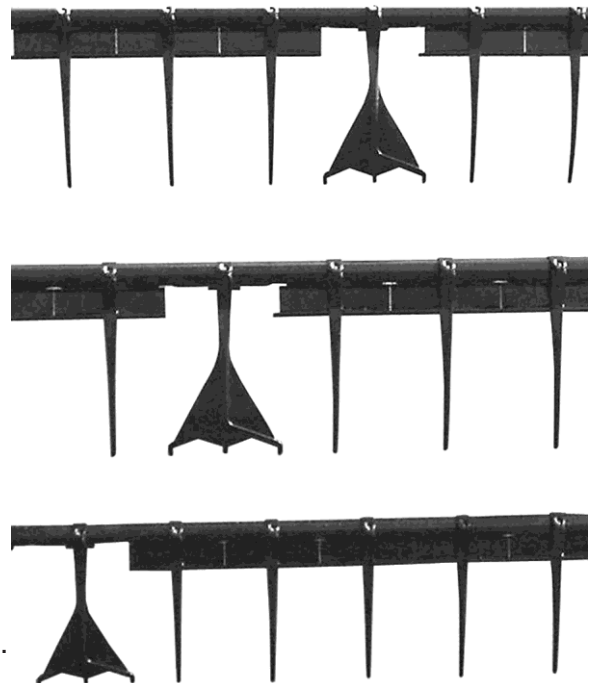


- **Increased harvest**
- **Improved feeding**
- **Cleaner cutterbar**
- **Faster harvesting**

Installation

Installation is fast and easy with HCC’s patented tine mounting system. Remove one screw and replace the standard tine with a “Paddle” tine. In less than one hour, you can easily replace enough standard tines with “Paddle” tines to dramatically improve your harvest.

Original tines can be used for spares or reinstalled, as needed.



HCC, inc.



HCC, inc.

HCC, inc., the original reel people and a leading manufacturer of combine components in North America.



HCC, inc.

Specifications

| Recommended Number of Paddles (sweeps header completely with each rotation of the reel) | | | | | |
|--|-------------------|-----|-----|-----|-----|
| Original Tine Spacing | Reel Width | | | | |
| | 18' | 20' | 25' | 30' | 36' |
| | Number of Paddles | | | | |
| 4.5" | 40 | 40 | 50 | 60 | N/A |
| 6.0" | 30 | 40 | 40 | 50 | 60 |

Note: Individual preferences or conditions may call for increasing the number of "Paddles" or altering the installation pattern.

Note: 4.5" spacing includes wood bat, polytine, and ML reels.
6.0" spacing is for the LII reel.

Parts and Price List

Paddles are **not** sold individually. Part numbers and prices are for a box of 10 paddles and includes screws and complete installation instructions.

| Description | Part No. | MOQ | 2022 List Price | |
|---|----------|-------------|-----------------|--------|
| For LII reel - 6.0" tine spacing ³ | 783846 | 1-299 boxes | \$ | 143.02 |
| | | 300 < boxes | \$ | 96.54 |
| For ML reel - 4.5" tine spacing ² | 783845 | 1-299 boxes | \$ | 141.36 |
| | | 300 < boxes | \$ | 95.42 |
| For Polytine (Teardrop Bat) ¹ | 783950 | 1-99 boxes | \$ | 153.30 |
| | | 100 < boxes | \$ | 121.94 |
| For Wood Bat Reels | 783949 | 1-49 boxes | \$ | 166.54 |
| | | 50 < boxes | \$ | 121.94 |

¹ Polytine reels supplied from 1984-1989.

² ML reels supplied 1989-1999.

³ LII reels are standard since 1999/2000.





HCC, inc.

Reels

HCC Reels for Combines and Swathers



HCC, inc.

HCC Reels

HCC Reels excel in moving crops into the combine. New design concepts effectively divide, lift, and feed standing or down crops, including soybeans, canola, wheat, lentils, irrigated crops, rice, and milo.

Dependability and lower maintenance result from fewer parts and tough polymer tines made with exclusive material. HCC Reel users enjoy advantages such as 35-40% improved visibility, up to 25% less weight to decrease load on harvesting equipment, and superior bat strength versus sheet metal or aluminum. The HCC Reel provides lower cost, more effective crop movement, and less down time for combine and swather customers world-wide.

HCC Level II Reel Components

The **Reel Bundle** consists of the center tube and bat tubes with tines attached.

The **Reel Attaching Packages** consists of RH & LH Brackets, Drive Shafts, End Shields, Reel Arms for mounting Bat Tubes to Center Tube, Reel Arm Bearings, and all Hardware for assembly

Level II Reels

Level II bat tube reels were introduced in 1999.

- 8" center tubes for reels 15' to 30' (are as noted)
- 10" center tubes for reels (are as noted)

ML 5 and ML 6 Bat Reels

Will need to call for availability

ML (Metric Length) bat tube reels were introduced in 1990

Real Bundles and Att. Packages are no longer offered. What was offered in a Reel Bundle and Att. Package will now only be available as individual Service Parts. Bat Tubes will **NOT** be assembled with the Tines.



HCC, inc.



HCC, inc.

Level II Reels

Improving combine performance
from start to finish



HCC, inc.

Level II Combine Reel Bundles and Attaching Packages Price List

| Description | Reel Bundle | 2022 List Price | Attaching Package | 2022 List Price | 2022 Total List | |
|---|---|------------------------|-------------------|-----------------|-----------------|-------------|
| AGCO 400 Series through 8000 | 13' * | 030513 | \$ 1,792.36 | 031224 | \$2,446.36 | \$4,238.72 |
| | 15' * | 030521 | \$ 1,873.42 | 031224 | \$2,446.36 | \$4,319.78 |
| | 16' - MF-Gleaner 8000/FH Challenger (Auger) * | 030525 | \$ 2,014.78 | 031224 | \$2,446.36 | \$4,461.14 |
| | 18' - MF-Gleaner 8000/FH Challenger (Auger) * | 030533 | \$ 2,103.35 | 031224 | \$2,446.36 | \$4,549.71 |
| | 20' - MF-Gleaner 8000/FH Challenger (Auger) * | 030541 | \$ 2,318.21 | 031224 | \$2,446.36 | \$4,764.57 |
| | 22' * | 031976 | \$ 2,435.51 | 031225 | \$3,089.05 | \$5,524.56 |
| | 25' - MF-Gleaner 7000/8000/RH-FH Challenger (Auger) * | 030561 | \$ 3,062.70 | 031225 | \$3,089.05 | \$6,151.75 |
| | 25' - AGCO 5200 (Draper) * | 030562 | \$ 2,847.79 | 031249 | \$3,445.25 | \$6,293.04 |
| | 27' - Gleaner 7000 (Auger) * | 030569 | \$ 3,396.25 | 031225 | \$3,069.05 | \$6,485.30 |
| | 30' - AGCO5100/MF5200 (Draper) * | 030582 | \$ 3,569.64 | 031249 | \$3,445.25 | \$7,014.89 |
| | 30' - MF-Gleaner 7000/8000/RH-FH Challenger (Auger)* | 030581 | \$ 3,545.16 | 031225 | \$3,089.05 | \$6,634.21 |
| | 35' - MF-Gleaner 7000/8000/RH-FH Challenger (Auger)** | 032082 | \$ 5,116.16 | 031281 | \$3,572.40 | \$8,688.56 |
| | AGCO 7200/8200/9250 | 20' - AGCO 7200/8200 * | 030541 | \$ 2,318.21 | 031328 | \$2,294.76 |
| 22' - AGCO 8200 * | | 030550 | \$ 2,649.92 | 031252 | \$2,645.02 | \$5,294.94 |
| 25' - AGCO 7200/8200/9250 * | | 030561 | \$ 3,062.70 | 031329 | \$2,935.03 | \$5,997.73 |
| 30' - AGCO 7200/8200/9250 * | | 030581 | \$ 3,545.16 | 031329 | \$2,935.03 | \$6,480.19 |
| 30' - AGCO 7200/8200/9250 (Draper)** | | 032138 | \$ 4,185.34 | 031281 | \$3,572.40 | \$7,757.74 |
| 36' - AGCO 9250 (Auger) ** | | 032082 | \$ 5,116.16 | 031281 | \$3,572.40 | \$8,688.56 |
| CCA - Caterpillar/Claas - Rigid Grain Head Only | 25' * | 030562 | \$ 2,847.79 | 031175 | \$3,155.00 | \$6,002.79 |
| | 30' * | 030582 | \$ 3,569.64 | 031175 | \$3,155.00 | \$6,724.64 |
| CASEIH - 1010 Header S/N JJC0300001 & CBJ023001 and later 1020 Header S/N JJC0315001 & CBJ023003 and later | 15' * | 030521 | \$ 1,873.42 | 031220 | \$2,621.63 | \$4,495.05 |
| | 16' * | 030527 | \$ 1,918.64 | 031220 | \$2,621.63 | \$4,540.27 |
| | 18' * | 030531 | \$ 2,007.23 | 031220 | \$2,621.63 | \$4,628.80 |
| | 20' * | 030541 | \$ 2,318.21 | 031220 | \$2,621.63 | \$4,939.84 |
| | 22' * | 031969 | \$ 2,512.34 | 031216 | \$3,064.55 | \$5,576.89 |
| | 25' * | 030561 | \$ 3,062.70 | 031216 | \$3,064.55 | \$6,127.25 |
| | 25' (Steel) * | 030961 | \$ 5,069.71 | 031216 | \$3,064.55 | \$8,134.26 |
| | 30' * | 030581 | \$ 3,545.16 | 031163 | \$3,384.94 | \$6,930.10 |
| 30' (Steel) * | 030981 | \$ 6,067.39 | 031163 | \$3,384.94 | \$9,452.33 | |
| CNH-CASEIH 2010/2020 Headers NH72C/NH74C | 20' * | 030540 | \$ 2,576.40 | 031324 | \$2,446.36 | \$5,022.76 |
| | 25' * | 030560 | \$ 3,000.48 | 031323 | \$2,756.45 | \$5,756.93 |
| | 30' * | 030580 | \$ 3,337.84 | 031323 | \$2,756.45 | \$6,094.29 |
| | 30' (Steel) * | 030980 | \$ 5,980.10 | 031323 | \$2,756.45 | \$8,736.55 |
| | 35' ** | 032023 | \$ 5,125.34 | 031514 | \$4,040.68 | \$9,166.02 |
| CNH - CASEIH 3020 CNH-NH CF740 | 25' * | 030562 | \$ 2,847.79 | 031561 | \$3,745.82 | \$6,593.61 |
| | 30' * | 030582 | \$ 3,569.64 | 031561 | \$3,745.82 | \$7,315.46 |
| | 35' ** | 032023 | \$ 5,125.34 | 031562 | \$4,749.56 | \$9,874.90 |
| Honey Bee | 25' * | 030562 | \$ 2,847.79 | 031227 | \$2,889.26 | \$4,641.63 |
| | 25' (Steel) * | 032032 | \$ 4,777.66 | 031227 | \$2,889.26 | \$6,318.97 |
| | 30' * | 030582 | \$ 3,569.64 | 031227 | \$2,889.26 | \$5,225.65 |
| | 30' (Steel) * | 032033 | \$ 5,710.86 | 031227 | \$2,889.26 | \$7,096.64 |
| | 36' ** | 032073 | \$ 4,949.38 | 031265 | \$3,411.34 | \$6,884.46 |
| | 36' (Split) * | 030534-LH | \$ 2,099.58 | 031334 | \$4,109.78 | \$8,176.42 |
| | | 032034-RH | \$ 1,967.06 | | | |
| | 42' (Split) * | 030546-LH | \$ 2,917.98 | 031334 | \$4,109.78 | \$9,487.96 |
| | | 032046-RH | \$ 2,460.22 | | | |
| | 45' (Split) * | 030552-LH | \$ 2,868.16 | 031326 | \$4,485.29 | \$10,242.85 |
| | | 032102-RH | \$ 2,889.37 | | | |

* 8" Center Tube
** 10" Center Tube





HCC, inc.

Level II Reels

HCC Reels for Combines and Swathers



HCC, inc.

Level II Combine Reel Bundles and Attaching Packages Price List Continued

| Description | Length | Reel Bundle | 2022 List Price | Attaching Package | 2022 List Price | 2022 Total List |
|---|---------------------|-------------|-----------------|-------------------|-----------------|-----------------|
| John Deere 600 Series Headers | 15' * | 030522 | \$ 1,928.06 | 031507 | \$2,495.87 | \$4,423.93 |
| | 18' * | 030534 | \$ 2,099.56 | 031507 | \$2,495.87 | \$4,595.45 |
| | 20' * | 030542 | \$ 2,352.12 | 031507 | \$2,495.87 | \$4,847.99 |
| | 22' * | 030550 | \$ 2,649.92 | 031507 | \$2,495.87 | \$5,145.79 |
| | 25' (Draper) * | 030562 | \$ 2,847.79 | 031508 | \$2,609.84 | \$5,979.60 |
| | 25' (Draper S/T) * | 032063 | \$ 3,934.12 | 031508 | \$3,131.81 | \$6,596.50 |
| | 30' (Draper) * | 032035 | \$ 4,086.02 | 031508 | \$3,131.81 | \$7,217.83 |
| | 30' (Auger) ** or * | 032035 | \$ 4,080.02 | 031527 | \$4,547.65 | \$8,633.67 |
| | 30' (Draper S/T) ** | 032080 | \$ 6,303.95 | 031508 | \$3,131.81 | \$9,435.76 |
| | JD 35' (Auger) ** | 032023 | \$ 5,125.34 | 031527 | \$4,547.65 | \$9,671.99 |
| | JD 35' (Draper) ** | 032023 | \$ 5,125.34 | N/A | N/A | N/A |
| John Deere 900 Series Headers | 15' * | 031954 | \$ 1,853.62 | 031503 | \$2,662.38 | \$4,516.00 |
| | 18' * | 031955 | \$ 1,972.56 | 031503 | \$2,662.38 | \$4,634.94 |
| | 20' * | 031956 | \$ 2,252.61 | 031503 | \$2,662.38 | \$4,914.89 |
| | 22' * | 031957 | \$ 2,543.45 | 031503 | \$2,662.38 | \$5,205.83 |
| | 25' (Auger) * | 030562 | \$ 2,847.79 | 031504 | \$3,324.78 | \$6,172.57 |
| | 25' (Draper) * | 030562 | \$ 2,847.79 | 031198 | \$3,430.19 | \$6,277.98 |
| | 25' (Draper S/T) * | 032063 | \$ 3,934.12 | 031198 | \$3,430.19 | \$7,364.31 |
| | 30' (Auger) * | 030580 | \$ 3,337.84 | 031504 | \$3,324.78 | \$6,662.62 |
| | 30' (Draper) * | 030582 | \$ 3,569.64 | 031198 | \$3,430.19 | \$6,999.83 |
| | 30' (Draper S/T) ** | 032080 | \$ 6,303.95 | 031506 | \$4,570.90 | \$10,874.85 |
| | 36' Draper ** | 032076 | \$ 4,808.76 | 031506 | \$4,570.90 | \$9,379.66 |
| New Holland - 1995 and later with fore & aft adjust. Excludes: CF740/NH72C/NH74C Series Headers | 16' * | 030524 | \$ 1,965.76 | 031223 | \$2,641.74 | \$4,607.50 |
| | 18' * | 030532 | \$ 2,386.04 | 031223 | \$2,641.74 | \$5,027.76 |
| | 20' * | 030540 | \$ 2,576.40 | 031223 | \$2,641.74 | \$5,218.14 |
| | 25' * | 030560 | \$ 3,000.48 | 031221 | \$3,486.72 | \$6,487.20 |
| | 30' * | 030580 | \$ 3,337.84 | 031199 | \$3,507.46 | \$6,845.30 |

| Recommended Crate Charges for Shipping Reel Bat Packages (1) Per Crate*** | |
|---|----------------|
| Reel Lengths | Cost Per Crate |
| 20' / 25' Reel Bat Packages 30' Reel Bat Packages 35' / 36' Reel Bat Packages | Call for Quote |

| Plastic Tine Reels Estimated Weight | | | | |
|--|-------------|----------------|-----------|---------------|
| Reel Length | Reel Bundle | Attaching Pkg. | Total | |
| 20' | 280 lbs. | 283 lbs. | 563 lbs. | 28.2 lbs./ft. |
| 25' | 350 lbs. | 317 lbs. | 667 lbs. | 26.7 lbs./ft. |
| 30' | 420 lbs. | 337 lbs. | 757 lbs. | 25.2 lbs./ft. |
| 36' | 630 lbs. | 392 lbs. | 1022 lbs. | 28.4 lbs./ft. |

Note: Does not include the weight of the shipping crate.

* 8" Center Tube

** 10" Center Tube

Note: All reels come with plastic tines except where noted as steel (S/T) on Case IH, Honey Bee, and John Deere.



HCC, inc.

HCC, inc., 1501 First Ave., Mendota, IL, 61342 - (815) 539-9371 - www.hccinc.com



HCC, inc.

Level II Reels

Improving combine performance
from start to finish



HCC, inc.

Level II Reel Bundles in Numeric Price List

| Part No. | Description | 2022 List Price |
|----------|--|-----------------|
| 030513 | LII 13' Reel Bundle - Agco 400-8000 Series ¹ | \$ 1,792.36 |
| 030521** | LII 15' Reel Bundle - Agco 400-8000 Series / CaselH 1010/1020* ¹ | \$ 1,873.42 |
| 030522 | LII 15' Reel Bundle - JD 615 ¹ | \$ 1,928.06 |
| 030524 | LII 16' Reel Bundle - NH 1995 and later ¹ | \$ 1,965.76 |
| 030525 | LII 16' Reel Bundle - MF-Challenger 8000/FH Challenger ¹ | \$ 2,014.78 |
| 030527** | LII 16' Reel Bundle - CaselH 1010/1020* ¹ | \$ 1,918.64 |
| 030531** | LII 18' Reel Bundle - CaselH 1010/1020* ¹ | \$ 2,007.23 |
| 030532 | LII 18' Reel Bundle - NH 1995 and later ¹ | \$ 2,386.04 |
| 030533 | LII 18' Reel Bundle - MF-Gleaner 8000 / FH Challenger ¹ | \$ 2,103.35 |
| 030534 | LII 18' Reel Bundle - HB 36' (LH Split) / JD 618 ¹ | \$ 2,099.58 |
| 030540 | LII 20' Reel Bundle - CNH-2010/2020 / NH 7200C / NH74C / NH1995 and later ¹ | \$ 2,576.40 |
| 030541** | LII 20' Reel Bundle - Agco 7200/8200 / CaselH 1010/ 1020 / MF-Gleaner 8000/FH Challenger* ¹ | \$ 2,318.21 |
| 030542 | LII 20' Reel Bundle - JD 620 / HB 40' (LH Split) ¹ | \$ 2,352.12 |
| 030546 | LII 21' Reel Bundle - HB 42' (LH Split) ¹ | \$ 2,917.98 |
| 030550 | LII 22' Reel Bundle - AGCO 8200 / JD 622 ¹ | \$ 2,649.92 |
| 030552 | LII 22' Reel Bundle - Case-HB 45' (LH Split) ¹ | \$ 2,866.19 |
| 030560 | LII 25' Reel Bundle - CNH2010/2020 / NH7200C / NH74C / NH 1995 and later ¹ | \$ 3,000.48 |
| 030561** | LII 25' Reel Bundle - Agco 7200/8200/9250 / CaselH 1010 /1020* /MF-Gleaner 7000/8000/RH-FH Challenger ¹ | \$ 3,062.70 |
| 030562 | LII 25' Reel Bundle - Agco 5200 /CCA-CAT/ CNH 3020 / CNH-NH C740 / HB / JD 625D / JD925AD ¹ | \$ 2,847.79 |
| 030569 | LII 27' Reel Bundle - Gleaner 7000A ¹ | \$ 3,396.25 |
| 030580 | LII 30' Reel Bundle - CNH 2010/2020 / JD 930A / NH 1995 and Later / NH 7200C / NH74C ¹ | \$ 3,337.84 |
| 030581** | LII 30' Reel Bundle - Agco 7200/8200/9250/CaselH 1010/1020* /MF-Challenger 7000/8000 RH-FH Challenger ¹ | \$ 3,545.16 |
| 030582 | LII 30' Reel Bundle - Agco 5100 / CCA-CAT / CNH3020 /CNH-NH CF740/ HB / JD 630 / JD 930 / MF 5200 ¹ | \$ 3,569.64 |
| 030961 | LII 25' Reel Bundle - Steel - CaselH 1010 / 1020* ¹ | \$ 5,069.71 |
| 030980 | LII 30' Reel Bundle - Steel - CaselH 2010 / 2020 / NH 7200C / NH74C ¹ | \$ 5,980.10 |
| 030981 | LII 30' Reel Bundle - CaselH 1010 / 1020* ¹ | \$ 6,067.39 |
| 030982 | LII 30' Reel Bundle - JD 930 S/T ¹ | \$ 5,168.35 |
| 031954 | LII 15' Reel Bundle - JD 915 ¹ | \$ 1,853.62 |
| 031955 | LII 18' Reel Bundle - JD 918 ¹ | \$ 1,972.56 |
| 031956 | LII 20' Reel Bundle - JD 920 ¹ | \$ 2,252.51 |
| 031957 | LII 22' Reel Bundle - JD 922 ¹ | \$ 2,543.45 |
| 031969** | LII 22' Reel Bundle - CaselH 1010 / 1020* ¹ | \$ 2,512.34 |
| 031976 | LII 22' Reel Bundle - Agco 400-8000 Series ¹ | \$ 2,435.51 |
| 032023** | LII 35' Reel Bundle - CNH-2010/2020 / NH7200C/ NH74C / CNH-3020 / CNH-NH CF 740 / JD935D / JD635A ² | \$ 5,125.34 |
| 032032 | LII 25' Reel Bundle - HB S/T ¹ | \$ 4,777.66 |
| 032033 | LII 30' Reel Bundle - HB S/T ¹ | \$ 5,710.86 |
| 032034 | LII 18' Reel Bundle - HB 36' (LH split) ¹ | \$ 1,979.05 |
| 032035** | LII 30' Reel Bundle - JD 630A ² | \$ 4,086.02 |
| 032046 | LII 21' Reel Bundle - HB 42' (RH Split) ¹ | \$ 2,460.22 |
| 032063 | LII 25' Reel Bundle - JD 625D S/T / JD926D S/T ¹ | \$ 3,934.12 |
| 032073 | LII 36' Reel Bundle - HB ² | \$ 4,949.38 |
| 032076** | LII 36' Reel Bundle - JD 936D ² | \$ 4,808.76 |
| 032080** | LII 30' Reel Bundle - JD 630D / JD 930D S/T ² | \$ 6,303.95 |
| 032082** | LII 35' Reel Bundle - Agco 9250A / MF-Gleaner 7000/8000 / RH-FH Challenger ² | \$ 5,116.16 |
| 032094 | LII 24' Reel Bundle - JD 625 S/T ¹ | \$ 5,533.34 |
| 032102 | LII 22' Reel Bundle - Case-HB 45' (RH split) ¹ | \$ 2,889.37 |
| 032105 | LII 20' Reel Bundle - HB 40' (RH Split) ¹ | \$ 2,527.08 |
| 032138** | LII 30' Reel Bundle - Agco 7200D/8200D/9250D ² | \$ 4,185.34 |

¹ 8" Center

² 10" Center

** 1010 S/N JJC0300001 & CBJ023001 and later.

1020 S/N JJC0315001 & CBJ023003 and later.





HCC, inc.

Level II Attaching Packages

HCC Reels for Combines and Swathers



HCC, inc.

Level II Combine Attaching Packages in Numeric Price List

| Part No. | Description | 2022 List Price |
|----------|--|-----------------|
| 031163** | LII 30' Att. Pkg. - Case 1010, 1020 | \$ 3,384.94 |
| 031175 | LII 25' & 30' Att. Pkg. - Cat, Claas | \$ 3,155.00 |
| 031198 | LII 25' & 30' Att. Pkg. - JD 900 Draper | \$ 3,430.19 |
| 031199 | LII 30' Att. Pkg. - NH 1995 and later | \$ 3,507.46 |
| 031216** | LII 22' & 25' Att. Pkg. - Case 1010, 1020 | \$ 3,064.55 |
| 031220** | LII 15', 16', 18', 20' Att. Pkg. - Case 1010, 1020 | \$ 2,621.63 |
| 031221 | LII 25' Att. Pkg. - NH 1995 and later | \$ 3,486.72 |
| 031223 | LII 16', 18', 20' Att. Pkg. - NH 1995 and later | \$ 2,641.74 |
| 031224 | LII 13', 15', 16', 18', 20' Att. Pkg. - Agco Srs4 (Auger) | \$ 2,446.39 |
| 031225 | LII 22', 25', 27', 30' Att. Pkg. - Agco Srs4 (Auger) | \$ 3,089.05 |
| 031227 | LII 25' & 30' Att. Pkg. - Honey Bee | \$ 2,889.26 |
| 031231 | LII 42' & 36' Att. Pkg. - HB (Split) (One-piece Ecc. Shield) | \$ 3,985.66 |
| 031249 | LII 25' & 30' Att. Pkg. - Agco/MF 5100/5200 (Draper) | \$ 3,445.25 |
| 031252 | LII 22' Att. Pkg. - Agco 8200 - 22' | \$ 2,645.02 |
| 031265 | LII 36' Att. Pkg. - HB 36' | \$ 3,411.34 |
| 031267 | LII 36' Att. Pkg. - Agco Split Reel | \$ 4,279.81 |
| 031281 | LII 30 & 35' Att. Pkg. - Agco 400 Series - 8000 - Agco 7200/8200/9250 | \$ 3,572.40 |
| 031282 | LII 35' Att. Pkg. - Case 2010, 2020 | \$ 3,635.51 |
| 031323 | LII 25' & 30' Att. Pkg. - Case 2010, 2020 | \$ 2,756.45 |
| 031324 | LII 20' Att. Pkg. - Case 2010, 2020 | \$ 2,446.30 |
| 031326 | LII 45' Att. Pkg. - HB Split | \$ 4,485.29 |
| 031328 | LII 20' Att. Pkg. - Agco 8200 | \$ 2,294.76 |
| 031329 | LII 25' & 30' Att. Pkg. - Agco 8200 | \$ 2,935.03 |
| 031334 | LII 42' & 36' Att. Pkg. - HB (Split) (Aux Tines and Six-piece Ecc. Shield) newer | \$ 4,109.78 |
| 031503 | LII 15', 18', 20', 22' Att. Pkg. - JD 900 | \$ 2,662.38 |
| 031504 | LII 25' & 30' Att. Pkg. - JD 900 | \$ 3,324.78 |
| 031505 | LII 36' Att. Pkg. JD | \$ 4,448.42 |
| 031506 | LII 30' & 36' Att. Pkg. - Draper - JD 900 | \$ 4,570.90 |
| 031507 | LII 15', 18', 20', 22' Att. Pkg. - JD 600 | \$ 2,495.87 |
| 031508 | LII 25' & 30' Att. Pkg. - JD 600 | \$ 3,131.81 |
| 031514 | LII 35' Att. Pkg. - Case 2010, 2020 | \$ 4,040.68 |
| 031527 | LII 35' Att. Pkg. - JD 600 | \$ 4,547.65 |
| 031561 | LII 24' 30' Att. Pkg. - CNH 3020, CNH-NH CF740 | \$ 3,745.82 |
| 031562 | LII 34' Att. Pkg. - CNH 3020, CNH-NH CF740 | \$ 4,749.56 |
| 031624 | LII 25' Att. Pkg. - HB | \$ 3,711.00 |

** 1010 S/N JJC0300001 & CBJ023001 and later.
1020 S/N JJC0315001 & CBJ023003 and later.



HCC, inc.

HCC, inc., 1501 First Ave., Mendota, IL, 61342 - (815) 539-9371 - www.hccinc.com



HCC, inc.

Reels

Improving combine performance
from start to finish

HCC, inc.

Miscellaneous Reel Parts

| Part No. | Description | MOQ | 2022 |
|--|---|-----|------------|
| | | | List Price |
| Plastic Reel Bearings for Wood Bat and Polytine Reels¹ | | | |
| 243310 | Bearing - Cap (Use w/ 780189 Arm) | | \$ 1.55 |
| 243320 | Bearing - Base (use w/ 780189 Arm) | | \$ 2.51 |
| 204110 | Bolt - U (1/4" - 20UNCX1.88") (Use w/ 243310/20) | | \$ 2.88 |
| 212111 | Nut - Top Lock for 204110 (Requires 2) (.25"-20UNC-2B) | | \$ 1.85 |
| 243325 | Bearing - Reel Arm Use w/ 481265 Arm (Required 2) (Plastic) | | \$ 1.52 |
| Reel Bearings for ML and LII Reels² | | | |
| 224056 | Strap - Thrust Retainer LII only | | \$ 5.12 |
| 243736* | Bearing - Reel Arm use w/ 481775 (Req. 2) for ML&L2 (Plastic) (Replaced 243714) | 500 | \$ 1.84 |
| 481776* | Strap - Bearing (Req. 1) | 250 | \$ 2.11 |
| 243720 | Bearing - Male Threaded Ecc. (Plastic) | 500 | \$ 3.43 |
| 243721 | Bearing - Female Threaded Ecc. (Plastic) | 500 | \$ 2.65 |
| 243325 | Bearing - Reel Arm Use w/ 481265 Arm Required 2 (Plastic) | | \$ 1.52 |
| Reel Arms | | | |
| 780189 | Arm - Reel Assy. (Wood Bat) | | \$ 20.89 |
| 481265 | Arm - Reel (Polytine Reel - Teardrop Bat) | | \$ 21.16 |
| 481775 | Arm - Reel (ML & LII Tube Type) | | \$ 20.16 |
| End Shields³ | | | |
| 481997 | Shield - End for ML, LII (6 used per reel < 22) ¹ | | \$ 29.03 |
| 483643 | Shield - Ecc. End for Polytine (6 used per end) (Replaced 481996) | | \$ 46.68 |
| 482398 | Shield - Closed End Ecc. For ML, LII, (Replaced 481953) | | \$ 283.48 |
| Miscellaneous | | | |
| 480750 | Ring - Ecc. Control (Flip-ML6) | | \$ 130.95 |
| 243719* | Bearing - Roller Ball (ML,LII,Orbit) * | 75 | \$ 28.83 |
| 243761* | Bearing - Roller Ball Flat Faced (Wood-Polytine) (Replaced 243330) | 80 | \$ 30.60 |
| Nut and Bolt | | | |
| 202812* | Bolt - Hex Head M10 | 100 | \$ 1.12 |
| 212412* | Nut - Top Lock M10 | 100 | \$.68 |

* MUST ORDER IN BOX QUANTITIES.

¹ Wood bat reels sold until 1983. Polytine reels sold 1984-1989. Approximate date, actual OEM date may differ.² ML reels sold 1990-1998. LII reels sold 1999-forward. Approximate date, actual OEM date may differ.³ Use 481997 for ML and LII.

Use 483643 for Polytine and all DEERE and Agco 8200.

Use 482398 for ML and LII, except for DEERE and Agco 8200.





HCC, inc.

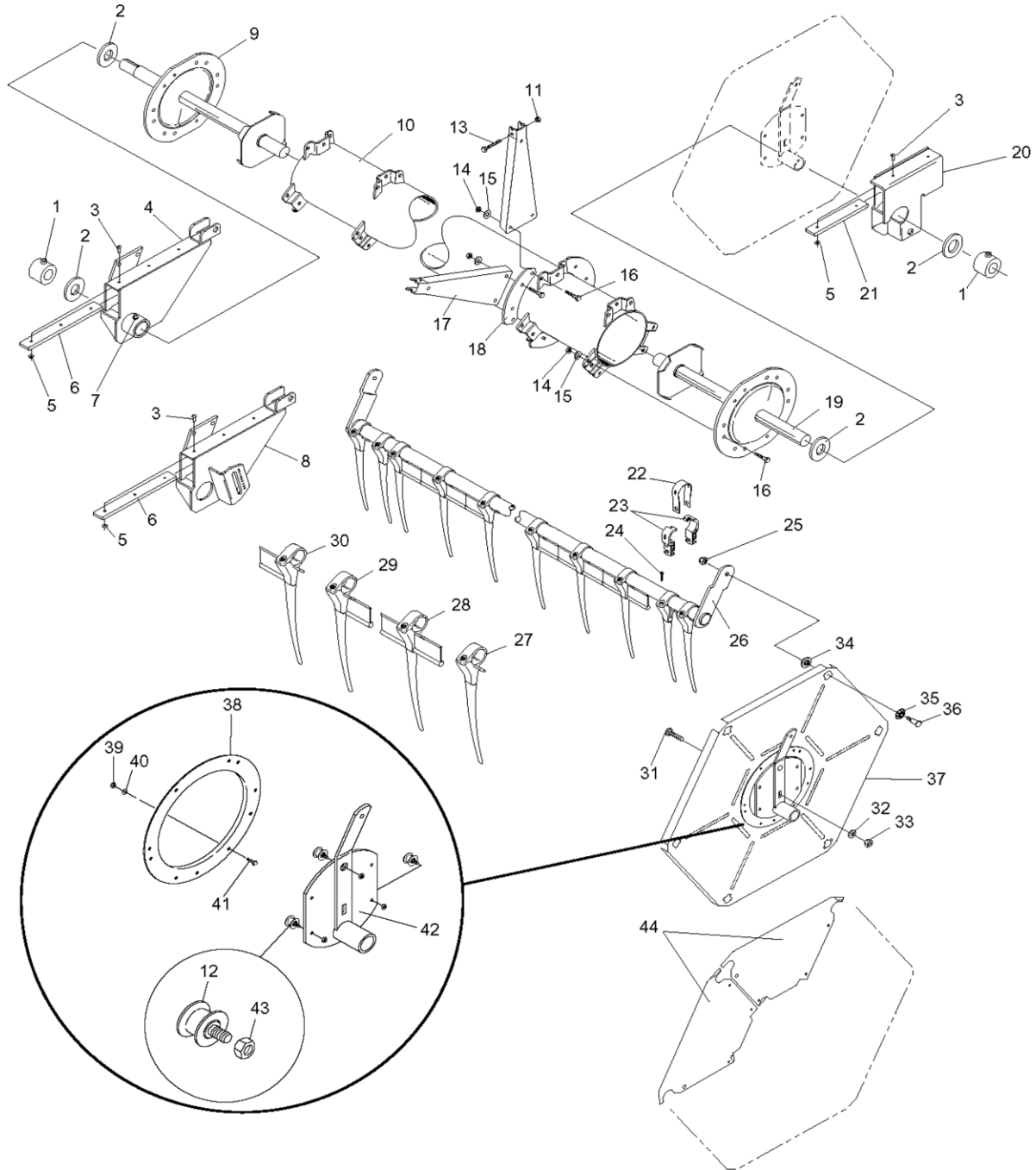
Level II Reels

DIAGRAM AND GUIDE



HCC, inc.

Service Parts Level II Pick-Up Reel



HCC, inc.

HCC, inc., 1501 First Ave., Mendota, IL, 61342 - (815) 539-9371 - www.hccinc.com



HCC, inc.

Level II Reels

Diagram and Guide



HCC, inc.

Service Parts Level II Pick-Up Reel

| Part No. | Description | Item No. | MOQ | 2022 |
|----------|--|----------|-----|------------|
| | | | | List Price |
| 782217 | Collar Assy Lock w/ set screws (metric) | 1 | | \$ 36.88 |
| 214430 | Washer - Flat (1.62"IDX2.25"ODX11Ga) | 2 | 100 | \$ 1.27 |
| ~ | Rivet - Break Mandrel Blind (specific brackets only) | 3 | | ~ |
| ~ | Bracket - Right-Hand (varies per customer) | 4 | | ~ |
| ~ | Washer - Flat #10 (specific brackets only) | 5 | | ~ |
| ~ | Strip-Wear (specific brackets only) | 6 | | ~ |
| 218110 | Fitting - Straight Grease (.125NPT Male) | 7 | | \$ 1.53 |
| ~ | Bracket - Right-Hand (varies per customer) | 8 | | ~ |
| ~ | Shaft - Driving End (varies per customer) | 9 | | ~ |
| ~ | Tube - Center (varies per customer) | 10 | | ~ |
| 212412* | Nut - Prev. Torq. Hex Lock (M10) | 11 | 100 | \$.68 |
| 243719* | Bearing - Roller Ball (ML,LII,Orbit) | 12 | 75 | \$ 28.83 |
| 202812* | Bolt - Hex Head (M10 x 1.5 x 50) | 13 | 100 | \$ 1.12 |
| 212412* | Nut - Prev. Torq. Hex Lock (M10) | 14 | 100 | \$.68 |
| 214233 | Washer - Helical Spring Lock (M10) | 15 | | \$.34 |
| 202808 | Bolt - Hex Head (M10X1.5X30) | 16 | | \$.71 |
| 481775 | Arm - Reel (ML & LII Tube Type) | 17 | | \$ 20.16 |
| 482681 | Plate - Assy Anchor (8" Ctr. Tube) | 18 | | \$ 9.53 |
| ~ | Shaft - Driven End (varies per customer) | 19 | | ~ |
| ~ | Bracket - Left-Hand (varies per customer) | 20 | | ~ |
| ~ | Wear Strip (specific brackets only) | 21 | | ~ |
| 481776* | Strap - Bearing (Req. 1) | 22 | 250 | \$ 2.11 |
| 243736* | Bearing - Reel Arm use w/ 481775 (Req. 2) for ML&L2 (Plastic) (Replaces 243714) | 23 | 500 | \$ 1.84 |
| 208065* | Screw - ML 4.5" Plastic Tine (3.5X1.3X16mm) | 24 | 500 | \$.13 |
| 212413 | Nut - Prev. Torq. Hex w/Plastic Insert (M12) | 25 | | \$ 1.72 |
| ~ | Tube - Welded Bat (varies per customer) | 26 | | ~ |
| 224050* | Plastic Fgr. Repair - No Bat - Pipe Type - LII 6" | 27 | 150 | \$ 3.05 |
| 224047* | Plastic Fgr. Repair - Full Bat - Pipe Type - LII 6" | 28 | 130 | \$ 2.82 |
| 224049* | Plastic Fgr. Repair - RH Bat - Pipe Type - LII 6" | 29 | 150 | \$ 3.05 |
| 224048* | Plastic Fgr. Repair - LH Bat - Pipe Type - LII 6" | 30 | 150 | \$ 3.05 |
| 201145 | Bolt - Carriage (M12X1.75X40) | 31 | 50 | \$ 8.18 |
| 214244 | Washer - Belleville (12mm) | 32 | | \$ 6.84 |
| 212404 | Nut - Hex (M12X1.75) | 33 | | \$ 1.36 |
| 243721 | Bearing - Female Threaded Ecc. (Plastic) | 34 | | \$ 2.65 |
| 243720 | Bearing - Male Threaded Ecc. (Plastic) | 35 | | \$ 3.43 |
| 204800 | Screw - Socket Head Shoulder (M12X1.75X50) | 36 | 165 | \$ 5.60 |
| 482398 | Shield - Closed End Ecc. For ML, LII, (Replaced 481953) | 37 | | \$ 283.48 |

Note: Parts and numbers shown are for the Level II Pick-Up Reel.

Note: See instruction/assembly procedure and parts book (C-1062-02) Page 10-11

* Order as each - Must order in MOQ quantity.





HCC, inc.

Level II Reels Diagram and Guide



HCC, inc.

Service Parts Level II Pick-Up Reel Continued

| Part No. | Description | Item No. | MOQ | 2022 List Price |
|----------|---|----------|-----|-----------------|
| 480750 | Ring - Ecc. Control (Flip-ML6) | 38 | | \$ 130.95 |
| 212402 | Nut - Hex (M8X1.75X6) | 39 | | \$.24 |
| 214232 | Washer - Helical Spring Lock (M8) | 40 | | \$.11 |
| 202861 | Bolt - Hex Head (M8X1.25X20) | 41 | | \$ 1.95 |
| ~ | Frame - Roller Eccentric (varies per customer) | 42 | | ~ |
| 212412* | Nut - Prev. Torq. Hex Lock (M10) | 43 | 100 | \$ 0.66 |
| 482399 | Shield - End Closed ML (Replaces 482115) | 44 | | \$ 58.86 |
| 481997 | Shield - End Open for ML, LII (6 used per reel < 22') | 44 | | \$ 29.03 |

Note: Parts and numbers shown are for the Level II Pick-Up Reel.

Note: See instruction/assembly procedure and parts book (C-1062-02) Page 10-11

* Order as each - Must order in MOQ quantity.



HCC, inc.

HCC, inc., 1501 First Ave., Mendota, IL, 61342 - (815) 539-9371 - www.hccinc.com

7-3

Effective January 1, 2022



HCC, inc.

Level II Reels Service Parts



HCC, inc.

Level II Service Parts Price List (by Product Category Alphabetically)

| Part No. | Description | Reel Part Numbers | 2022 List |
|------------------|--|--|-----------|
| ARM REELS | | | |
| 481775 | Arm - Reel (ML & LII Tube Type) | ALL Reel PN's | \$ 20.16 |
| 483169 | Arm - Reel | 031281, 031562, 031514, 031265, 031056, 031527 | \$ 25.77 |
| BEARINGS | | | |
| 243325 | Bearing - Reel Arm (REQ 2 - Plastic) | 031328, 031281, 031198 | \$ 1.52 |
| 243340 | Bearing - Super Oilite (1.75"ODX1.562"IDX1.5") | 031163, 031198-99, 031216, 031249, 031281, 031323-24, 031328, 031506-08, 031527, 031514, 031561-62 | \$ 8.05 |
| 243719 | Bearing - Roller Ball (ML,LII,Orbit) | ALL Reel PN's | \$ 28.83 |
| 243720 | Bearing - Male Threaded Ecc. (Plastic) | ALL Reel PN's | \$ 3.43 |
| 243721 | Bearing - Female Threaded Ecc. (Plastic) | ALL Reel PN's | \$ 2.65 |
| 243736 | Bearing - Reel Arm (Req. 2) (Replaces 243714) | ALL Reel PN's | \$ 1.84 |
| 481776 | Bearing - Strap (Req. 1) | ALL Reel PN's | \$ 2.11 |
| BRACKETS | | | |
| 782035 | Bracket - RH Ecc. Adj. (Motor Support Bracket) | 031503, 031504 | \$ 381.65 |
| 782419 | Bracket - LH End | 31504 | \$ 181.17 |
| 782421 | Bracket - RH End Assy. | 031503 | \$ 274.14 |
| 782422 | Bracket - RH End | 031503, 031504 | \$ 186.54 |
| 782563 | Bracket - LH End | 031224, 031225 | \$ 198.45 |
| 782564 | Bracket - RH End | 031225 | \$ 190.19 |
| 782571 | Bracket - LH End Assy | 031224, 031225 | \$ 333.85 |
| 782572 | Bracket - RH End Assy | 031224 | \$ 388.56 |
| 782573 | Bracket - RH End Assy. | 031225 | \$ 326.11 |
| 782576 | Bracket - RH End | 031224 | \$ 244.10 |
| 782636 | Bracket - RH End | 031503 | \$ 202.99 |
| 782689 | Bracket - LH End (HB Direct Drive) | 031227, 031265 | \$ 140.18 |
| 782691 | Bracket - RH End (HB Direct Drive) | 031227, 031265 | \$ 140.18 |
| 782797 | Bracket - RH End Assy. | 031231, 031334 | \$ 189.47 |
| 782894 | Bracket - LH End | 031199, 031221 | \$ 210.74 |
| 782895 | Bracket - LH End Assy. | 031223, 031221, 031199 | \$ 387.27 |
| 782896 | Bracket - RH End | 031199 | \$ 210.74 |
| 782897 | Bracket - RH End Assy. | 031221, 031199 | \$ 387.27 |
| 782899 | Bracket - RH End Assy (SGL Ecc.) | 031223 | \$ 394.02 |
| 783249 | Bracket - LH End | 031220, 031163 | \$ 233.12 |
| 783250 | Bracket - RH End | 031163 | \$ 429.71 |
| 783251 | Bracket - RH End | 031220 | \$ 469.62 |
| 783252 | Bracket - LH End Assy. | 031220, 031216, 031163 | \$ 245.07 |
| 783253 | Bracket - RH End Assy. | 031216, 031163 | \$ 439.57 |
| 783254 | Bracket - RH End Assy. | 031120 | \$ 608.48 |
| 783360 | Bracket - RH End | 031175 | \$ 185.58 |
| 783361 | Bracket - LH End | 031775 | \$ 167.90 |
| 783362 | Bracket - RH End Assy Claas Rigid | 031175 | \$ 245.40 |
| 783363 | Bracket - LH End Assy Claas Rigid | 031175 | \$ 227.42 |
| 783755 | Bracket - RH End | 031252 | \$ 177.70 |
| 783917 | Bracket - LH End | 031252, 031249, 031267 | \$ 157.11 |
| 783918 | Bracket - RH End | 031252, 031249, 031267 | \$ 157.11 |
| 783936 | Bracket - LH End | 031507, 031508, 031527 | \$ 282.90 |
| 783937 | Bracket - RH End | 031508, 031527 | \$ 457.84 |
| 783962 | Bracket - RH End (SGL Ecc.) | 031507 | \$ 476.19 |
| 784087 | Bracket - RH End | 031323, 031514 | \$ 127.64 |
| 784088 | Bracket - LH End | 031324, 031323, 031514 | \$ 127.64 |





HCC, inc.

Level II Reels Service Parts



HCC, inc.

Level II Service Parts Price List Continued (by Product Category Alphabetically)

| Part No. | Description | Reel Part Numbers | 2022 List |
|----------------------------|--|--|-----------|
| BRACKETS (CONTINUE) | | | |
| 784090 | Bracket - RH End | 031324 | \$ 350.85 |
| 784363 | Bracket - LH End | 031561, 031562 | \$ 312.24 |
| 784364 | Bracket - RH End | 031561, 031562 | \$ 386.78 |
| FRAME - ROLLER | | | |
| 783329 | Frame - Roller Ecc. Assy. (218.5mm tube) | 031163, 031216, 031323-24, 031514, 031561-62 | \$ 285.75 |
| 783469 | Frame - Roller LH Ecc. Assy. | 031198, 031506 | \$ 186.17 |
| 783478 | Frame - Roller RH Ecc. Assy | 031198, 031506 | \$ 199.18 |
| 783730 | Frame - Roller Ecc. Assy. | 031175, 031199, 031221, 031223-24, 031225, 031227, 031265, 031503-04 | \$ 220.25 |
| 783735 | Frame - Roller Ecc. w/ Shield Assy. | 031163, 031216, 031220, 031323, 031514, 031561-62 | \$ 254.76 |
| 783919 | Frame - Roller Assy. | 031249, 031252 | \$ 256.87 |
| 783940 | Frame - Roller Ecc. Assy | 031507, 031508, 031527 | \$ 149.71 |
| 783941 | Frame - Roller Ecc. Assy. | 031508, 031527 | \$ 162.74 |
| 783976 | Frame - Roller Ecc. Assy. | 031328, 031329, 031281 | \$ 376.81 |
| HARDWARE | | | |
| 201145 | Bolt - Carriage (M12X1.75X40) (Orbit & Reels) | ALL Reel PN's (except PN 031198) | \$ 8.18 |
| 201150 | Bolt - Carriage SD SQ (3/8-16X1.125) | 031252 | \$.71 |
| 202025 | Bolt - Hex Head .31-18NC X3.25" | 031220, 031216, 031163 | \$.96 |
| 202190 | Bolt - Hex Head Machine (3/8 x 16 x 1.00) | 031503, 031504 | \$.53 |
| 202600 | Bolt - Hex Head Machine Screw (5/16-18X.50) | 031503, 031504, 031507, 031508, 031527 | \$.27 |
| 202807 | Bolt - Hex Head (M10 x 1.5 x 25) (Orbit & Reel) | 031163, 031216, 031220, 031223-4, 031252, 031323-4, 031328, 031514, 301527, 031561-2 | \$ 1.04 |
| 202808 | Bolt - Hex Head (M10X1.5X30) | ALL Reel PN's | \$.71 |
| 202809 | Bolt - Hex Head (M10X1.5X35) | 031562, 031265, 031281, 031506, 031514 | \$.73 |
| 202812 | Bolt - Hex Head (M10X1.5X50) | ALL Reel PN's | \$ 1.12 |
| 202819 | Bolt - Hex Head (M12X1.75X25) | 031561, 031562 | \$ 1.32 |
| 202826 | Bolt - Hex Head Cap Screw (M12 x 1.75 x 80) | 031323, 031324, 031514, 031561, 031562 | \$ 6.52 |
| 202861 | Bolt - Hex Head (M8X1.25X20) | ALL Reel PN's | \$ 1.95 |
| 202890 | Bolt - Hex Head Flange (M8X25MM) | 030961, 030980, 030981, 032032, 032033, 032063, 032080 | \$.53 |
| 202901 | Bolt - Hex Head (M6) | 031198 | \$.32 |
| 204101 | Bolt - Round Hex HD Shank (1/2"- 20NFX2.5) (MOQ 120) | 031249, 031252 | \$ 4.86 |
| 781055 | Collar - Lock | ALL Reel PN's | \$ 21.08 |
| 782217 | Collar - Assy Lock w/ set screws (Metric) | 031175, 031224-25, 031227, 031249, 031252, 031265, 031281, 031328, 031514, 031562 | \$ 36.88 |
| 218110 | Fitting - Straight Grease (.125NPT Male) | 031163, 031198-99, 031216, 031249, 031281, 031323-24, 031328, 031506-08, 031514, 031517, 031561-62 | \$ 1.53 |
| 277267 | Handle - Grip | 031198, 031506 | \$ 4.61 |
| 263381 | Hose Assembly - Hydraulic | 031220, 031216, 031163 | \$ 51.78 |
| 212451 | Insert - Metric Thread (Steel Reel- M8X1.25) | 030961, 030980, 030981, 032032, 032033, 032063, 032080 | \$.94 |
| 275253 | Indicator Reel Center | 031329, 031281 | \$ 3.25 |
| 219190 | Key- Square (.75"X2.0") | 031252 | \$ 14.63 |
| 212145 | Nut - Serr. Flange Hex .312-18UNC | 031163, 031216, 031220 | \$.29 |
| 212150 | Nut - Hex (3/8-16 14H812) | 031252, 031503, 031504 | \$.10 |
| 212196 | Nut - Prev. Torq. Flg. Lock (1/2"-13NC x 2B) | 031503, 031504, 031507, 031508, 031527 | \$ 1.66 |
| 212239 | Nut - Prev. Torq Flg. Lock (1/2"-20NF) | 031249, 031252 | \$ 1.04 |
| 212402 | Nut - Hex (M8X1.75X6) | ALL Reel PN's | \$.24 |
| 212404 | Nut - Hex (M12X1.75) | ALL Reel PN's | \$ 1.36 |



HCC, inc.

HCC, inc., 1501 First Ave., Mendota, IL, 61342 - (815) 539-9371 - www.hccinc.com



HCC, inc.

Level II Reels Service Parts



HCC, inc.

Level II Service Parts Price List Continued (by Product Category Alphabetically)

| Part No. | Description | Reel Part Numbers | 2022 List |
|----------------------------|---|---|-----------|
| HARDWARE (CONTINUE) | | | |
| 212410 | Nut - Prev. Torq. Hex Lock (M6) | 031198 | \$.20 |
| 212412 | Nut - Prev. Torq. Hex Lock (M10) | ALL Reel PN's | \$.68 |
| 212413 | Nut - Prev. Torq. Hex w/Plastic Insert (M12) | ALL Reel PN's | \$ 1.72 |
| 212459 | Nut - Weld (Steel Reel - M10) | 030961, 032032, 032033 | \$ 2.96 |
| 277266 | Pad - Reel Slide | 031198, 031506 | \$ 5.79 |
| 783477 | Pin - Pitch Adjust | 031198, 031506 | \$ 26.77 |
| 216143 | Pin - Spring M3X24 | 031198, 031506, 031508 | \$.46 |
| 482681 | Plate - Assy Anchor (8" Ctr. Tube) | ALL Reel PN's | \$ 9.53 |
| 482815 | Plate - Assy. Anchor - (10" Ctr Tube) | 031281, 031562, 031514, 031265, 031506, 031527 | \$ 17.92 |
| 483537 | Plate - Cylinder Mounting | 031561, 031562 | \$ 8.44 |
| 277694 | Plug - Dom Plastic (Steel Reel - 12.7ODX10.3) | 030961, 030981, 030980, 032032, 032033, 032063, 032080 | \$.20 |
| 222041 | Ring - Snap | 031504, 031198, 031506, 031508, 031527 | \$ 5.20 |
| 480750 | Ring - Ecc. Control (Flip-ML6) | 031163, 031198-99, 031216, 031221, 031223, 031249, 031281, 031323-24, 031328, 031506-8, 031514, 031527, 031561-62 | \$ 130.95 |
| 243686 | Roller - Reel Support - Plastic (.79"IDX1.5"ODX1.97") | 031323-24, 031503-04, 031507-08, 031514, 031527, 031561-62 | \$ 13.41 |
| 202075 | Screw - Hex Head Machine (1/2-13 x 3.25) | 031503, 031504, 031507, 031508, 031527 | \$ 2.11 |
| 204800 | Screw - Socket Head Shoulder (M12X1.75X50) | ALL Reel PN's | \$ 5.60 |
| 208065 | Screw - Tines (3.5 x 1.3 x 16mm) * (REQ 500 Box) | ALL Reel PN's | \$.13 |
| 214420 | Spacer - Tubing (.81"ODX1.25"IDX11GA) | 031249, 031252, 031220 | \$ 4.57 |
| 481497 | Spacer - Tube (.75"X.53"X2.06") | 031323-24, 031503-04, 031507-08, 031514, 031527, 031561-62, 031527 | \$ 6.76 |
| 482281 | Spacer - Tubing | 031220, 031216, 031163 | \$ 10.71 |
| 225097 | Spring | 031198, 031506, 031508 | \$ 3.64 |
| 224056 | Strap - Thrust Retainer (Steel Reel-LII only) | 030961, 030981, 030980, 032032, 032033, 032063, 032080 | \$ 5.12 |
| 214120 | Washer - Hel Spring lock .32 | 031503, 031504, 031507, 031508, 031527 | \$.07 |
| 214130 | Washer - Hel Spring lock .75 | 031252, 031503, 031504 | \$.09 |
| 214232 | Washer - Helical Spring Lock (M8) | 031163, 031198-9, 031216, 031221, 031223, 031249, 031323-24, 031527-8, 031506-08, 031514, 031561-2 | \$.11 |
| 214233 | Washer - Helical Spring Lock (M10) | ALL Reel PN's | \$.34 |
| 214244 | Washer - Belleville (M12) (Orbit & Reels) | ALL Reel PN's (except 031198, 031056) | \$ 6.84 |
| 214249 | Washer - Contact (Steel- Reel - 8Med) | 030961, 030980, 030981, 032032, 032033, 032063, 032080 | \$.52 |
| 214270 | Washer - Flat (.440X1.0X.078) | 031252, 031503, 031504 | \$.15 |
| 214360 | Washer - Flat .75X.875X.078 | 031503, 031504, 031507, 031508, 031527 | \$.10 |
| 214430 | Washer - Flat (1.62"IDX2.25"ODX11Ga) | ALL Reel PN's | \$ 1.27 |
| 214568 | Washer - Flat 15X24 | 031198, 031506, 031508 | \$.48 |
| SHAFTS | | | |
| 783210 | Shaft - Driven End | 031198, 031507, 031508, 031527 | \$ 349.53 |
| 783211 | Shaft - Driving End | 031503, 031504 | \$ 383.39 |
| 783275 | Shaft - Driving End | 031163, 031216, 031323-24, 031561 | \$ 263.97 |
| 783373 | Shaft - Driving End | 031175 | \$ 406.76 |
| 783377 | Shaft - Driving End | 031198, 031508 | \$ 383.39 |
| 783386 | Shaft - Driving End (LVLII) | 031225 | \$ 460.26 |
| 783397 | Shaft - Driven End (LVLII) | 031163, 031175, 031199, 031216, 031220-21, 031223-25, 031252, 031323-24, 031503-04, 031561 | \$ 206.51 |





Level II Reels Service Parts



Level II Service Parts Price List Continued (by Product Category Alphabetically)

| Part No. | Description | Reel Part Numbers | 2022 List |
|---------------------------|---|---|-------------|
| SHAFTS (CONTINUE) | | | |
| 783472 | Shaft - Driving End | 031507 | \$ 383.39 |
| 783496 | Shaft - Driving End | 031223, 031221, 031199 | \$ 450.37 |
| 783558 | Shaft - Driving End | 031220, 031216, 031163 | \$ 392.54 |
| 783618 | Shaft - Driven End | 031224 | \$ 573.22 |
| 783649 | Shaft - Driving End | 031199, 031221, 031223, 031227 | \$ 355.54 |
| 783834 | Shaft - Driving End | 031249, 031252, 031328 | \$ 288.64 |
| 783916 | Shaft - Driven End | 031249 | \$ 243.50 |
| 783927 | Shaft - Driving End | 031265 | \$ 508.97 |
| 783953 | Shaft - Driving End | 031281 | \$ 563.54 |
| 783954 | Shaft - Driven End | 031281 | \$ 456.23 |
| 784117 | Shaft - Driving End | 031329 | \$ 321.09 |
| 784118 | Shaft - Driven End | 031328, 031329 | \$ 243.90 |
| 784221 | Shaft - Driven End | 031562, 031514 | \$ 696.61 |
| 784284 | Shaft - Driving End | 031506, 031527 | \$ 623.29 |
| 784285 | Shaft - Driven End | 031506, 031527 | \$ 451.72 |
| 784824 | Shaft - Driven End w/PLT Bulkhead (Replaced 784220) | 031562, 031514 | \$ 828.77 |
| SHIELD | | | |
| 481997 | Shield - End Open for ML, LII (6 used per reel < 22') | 031216, 031220, 031223-24, 031252, 031328, 031503-04, 031507-08 | \$ 29.03 |
| 482398 | Shield - Closed End Ecc. For ML, LII, (Replaced 481953) All one Piece | 031163, 031199, 031221, 031223, 031216, 031249, 031323-24, 031506-08, 031514, 031527, 031561-62 | \$ 283.48 |
| 482399 | Shield - End Closed ML (Replaces 482115) Individual | 031324 | \$ 58.86 |
| 782267 | Shield - Ecc. Assembly (w/6 ea. of 483643) | 031328, 031329, 031281, 031198 | \$ 492.72 |
| 782883 | Shield - Ecc. Assy. End 6 Bat | 031175, 031199, 031221, 031223-25, 031227, 031265, 031503-04 | \$ 985.89 |
| 782884 | Shield - Ecc. Assy. w/243720, 243721 (Enclosed) | ALL Reel PN's (except 031198, 031227, 031281, 031328-29) | \$ 493.04 |
| 783328 | Shield - Ecc. Assy End | 031163, 031216, 031220, 031323, 031514, 031561-62 | \$ 1,032.30 |
| 783921 | Shield - Ecc Assy. End 6 Bat | 031249, 031252, 031249, 031267 | \$ 987.69 |
| 483643 | Shield - Ecc. End for Polytime, (6 used per end) | 031198, 031281, 031328 | \$ 37.86 |
| SUPPORT | | | |
| 783473 | Support - RH Slide Assy. (DBL Ecc.) | 031198, 031506 | \$ 856.36 |
| 783474 | Support - LH Slide Assy (True Size) | 031198, 031506 | \$ 514.54 |
| 784120 | Support - Reel Assy | 031328 | \$ 187.88 |
| TUBES - WELDED BAT | | | |
| 783195 | Tube - Welded Bat (25'- 7316.0 NRL LVLII) | 030562 | \$ 200.13 |
| 783196 | Tube - Welded Bat (30'- 8840.00 NRL LVLII) | 030582, 032035 | \$ 231.11 |
| 783220 | Tube - Welded Bat (30'- 8687.6 NRL LVLII) | 030580 | \$ 228.32 |
| 783241 | Tube - Welded Bat (30'-8763.8 NRL LVLII) | 030581, 032138 | \$ 225.25 |
| 783244 | Tube - Welded Bat (25'-7239.8 NRL LVLII) | 030561 | \$ 191.07 |
| 783322 | Tube - Welded Bat (36'-10628.2 NRL LVLII) | 032076 | \$ 280.40 |
| 783348 | Tube - Welded Bat (20'- 5842.0 NRL LVLVII) | 030542 | \$ 125.70 |
| 783395 | Tube - Welded Bat (22'- 6451.6 NRL LVLII) | 030550 | \$ 167.33 |
| 783414 | Tube - Welded Bat (18'- 5156.20 NRL LVLII) | 030533 | \$ 114.91 |
| 783480 | Tube - Welded Bat RH Ecc. (15'- 4318.0 NRL LVLII) | 031954 | \$ 113.84 |
| 783481 | Tube - Welded Bat RH Ecc. (18'- 5080.0 NRL LVLII) | 031955 | \$ 119.78 |
| 783483 | Tube - Welded Bat (20'- 5689.6 NRL LVLII) | 031956 | \$ 144.37 |
| 783484 | Tube - Welded Bat RH Ecc. (22' - 6299.2 NRL LVLII) | 031957 | \$ 178.81 |
| 783513 | Tube - Welded Bat (16'- 4546.6 NRL LVLII) | 030525 | \$ 114.13 |
| 783515 | Tube - Welded Bat (16'- 4699.0 NRL LVLII) | 030527 | \$ 114.34 |
| 783517 | Tube - Welded Bat (21'- 6070.6 NRL LVLII) | 030545, 030545D, 030945 | \$ 167.09 |





HCC, inc.

Level II Reels Service Parts



HCC, inc.

Level II Service Parts Price List Continued (by Product Category Alphabetically)

| Part No. | Description | Reel Part Numbers | 2022 List |
|--------------------------------------|--|--|-------------|
| TUBES - WELDED BAT (CONTINUE) | | | |
| 783539 | Tube - Welded Bat (25' - 7163.6 NRL LVLII) | 030560 | \$ 193.05 |
| 783560 | Tube - Welded Bat (15' - 4241.8 NRL LVLII) | 030521 | \$ 130.68 |
| 783562 | Tube - Welded Bat (18' - 5003.8 NRL LVLII) | 030531 | \$ 115.99 |
| 783564 | Tube - Welded Bat (20' - 5765.8 NRL LVLII) | 030541 | \$ 137.63 |
| 783566 | Tube - Welded Bat (22' - 6477.8 NRL LVLII) | 031969 | \$ 160.70 |
| 783591 | Tube - Welded Bat (16' - 4470.4 NRL LVLII) | 030524 | \$ 114.06 |
| 783593 | Tube - Welded Bat (18' - 5080.0 NRL LVL II) | 030532 | \$ 114.78 |
| 783594 | Tube - Welded Bat (20' - 5689.6 NRL LVLII) | 030540 | \$ 125.55 |
| 783612 | Tube - Welded Bat (15' - 4318.0 NRL LVLII) | 030522 | \$ 113.84 |
| 783614 | Tube - Welded Bat (13' - 2332.2 NRL LVLII) | 030513 | \$ 112.99 |
| 783616 | Tube - Welded Bat (27' - 7849.4 NRL LVLII) | 030569 | \$ 225.58 |
| 783632 | Tube - Welded Bat S/T SGL (25' 7316.0 NRL LVLII) | 032063 | \$ 210.34 |
| 783633 | Tube - Welded Bat S/T SGL (25' 7316.0 NRL LVLII) | 032063 | \$ 210.34 |
| 783634 | Tube - Welded Bat (22' - 6325.4 NRL LVLII) | 031976 | \$ 144.46 |
| 783652 | Tube - Welded Bat S/T (30' - 8840.0 NRL LVL II) | 032080 | \$ 246.99 |
| 783653 | Tube - Welded Bat S/T (30' - 8840.0 NRL LVL II) | 032080 | \$ 246.99 |
| 783732 | Tube - Welded Bat LH Ecc. (21' - 6146.8 NRL LVL) | 030546 | \$ 167.18 |
| 783733 | Tube - Welded Bat LH Ecc. (18' - 5232.4. NRL. LVLII) | 030534 | \$ 131.38 |
| 783736 | Tube - Welded Bat RH Ecc. (18' - 5232.4 NRL, LVLII) | 032034 | \$ 131.38 |
| 783737 | Tube - Welded Bat RH Ecc. (21' - 6146.8 NRL) | 032046 | \$ 154.22 |
| 783750 | Tube - Welded Bat S/T (25' - 7239.8 NRL LVLII) | 030961 | \$ 191.11 |
| 783751 | Tube - Welded Bat S/T (25' - 7239.8 NRL LVLII) | 030961 | \$ 191.11 |
| 783752 | Tube - Welded Bat S/T (30" - 8763.8 NRL LVLII) | 030981 | \$ 218.75 |
| 783753 | Tube - Welded Bat S/T (30" - 8763.8 NRL LVLII) | 030981 | \$ 218.75 |
| 783769 | Tube - Welded Bat (36' - 10704.3 NRL LVLII) | 032073 | \$ 309.44 |
| 783816 | Tube - Welded Bat S/T (30' 8687.6 NRL LVLII) | 030980 | \$ 237.83 |
| 783817 | Tube - Welded Bat S/T (30' 8687.6 NRL LVLII) | 030980 | \$ 237.83 |
| 783827 | Tube - Welded Bat (35' - 10353.2 NRL LVLII) | 032023 | \$ 280.40 |
| 783952 | Tube - Welded Bat (35' - 10276.0 NRL LVLII) | 032082 | \$ 280.40 |
| 784068 | Tube - Welded Bat RH (22'-6540.92 for 45' Split) | 032093 | \$ 167.33 |
| 784073 | Tube - Welded Bat S/T (25' - 7316.0 NRL LVLII) | 032032 | \$ 210.34 |
| 784074 | Tube - Welded Bat S/T (25' - 7316.0 NRL LVLII) | 032032 | \$ 210.34 |
| 784096 | Tube - Welded Bat S/T (30' - 8840.0 NRL LVL II) | 032033 | \$ 218.88 |
| 784097 | Tube - Welded Bat S/T (30' - 8840.0 NRL LVL II) | 032033 | \$ 218.88 |
| 784120 | Tube - Reel Support Assy | 031328 | \$ 187.88 |
| 784149 | Tube - Welded Bat LH Ecc. (5909.59) | JD 640 FD (Up to Nov. 2015) | \$ 186.31 |
| 784150 | Tube - Welded Bat RH Ecc. (5909.59) | JD 640 FD (Up to Nov. 2015) | \$ 186.31 |
| TUBES - CENTER | | | |
| 783212 | Tube - Center 8"- (25' - 73160.0 NRL LVLII) | 030562, 032032, 030562, 032063, 032094 | \$ 1,134.19 |
| 783240 | Tube - Center 8"- (30' - 8763.8 NRL LVLII) | 030581, 030981 | \$ 1,372.31 |
| 783245 | Tube - Center 8"- (25' - 7239.8 NRL LVLII) | 030561, 030961 | \$ 1,142.47 |
| 783335 | Tube - Center 8"- (22' - 6299.2 RH ECC. NRL LVLII) | 031957 | \$ 1,139.62 |
| 783340 | Tube - Center 8"- (30' - 8840.00 NRL LVLII) | 030582, 032033 | \$ 1,385.09 |
| 783344 | Tube - Center 8"- (20' - 5842. NRL LVLII) | 030542 | \$ 903.96 |
| 783384 | Tube - Center 8"- (30' - 8687.6 NRL LVL II) | 030580, 030980 | \$ 1,362.00 |
| 783394 | Tube - Center 8"- (22' - 6451.6 NRL LVLII) | 030550 | \$ 1,070.81 |
| 783410 | Tube - Center 8"- (18' - 5156.2 NRL LVLII) | 030533 | \$ 908.21 |
| 783454 | Tube - Center 8"- (15' - 4318.0 NRL LVLII) | 031954, 030522 | \$ 753.35 |
| 783471 | Tube - Center 8"- (20' - 5689.6 NRL LVLII) | 030540, 031956 | \$ 910.01 |
| 783482 | Tube - Center 8"- (18' - 5080.00 NRL LVLII) | 031955, 030532 | \$ 765.01 |
| 783514 | Tube - Center 8"- (16' - 4546.6 NRL LVLII) | 030525 | \$ 754.49 |



HCC, inc.

Level II Reels Service Parts



HCC, inc.

Level II Service Parts Price List Continued (by Product Category Alphabetically)

| Part No. | Description | Reel Part Numbers | 2022 List |
|----------------------------------|--|------------------------------|-------------|
| TUBES - CENTER (CONTINUE) | | | |
| 783516 | Tube - Center 8" - (16' - 4699.00 NRL LVLII) | 035027 | \$ 783.16 |
| 783540 | Tube - Center 8" - (25' - 7163.5 NRL LVLII) | 030560 | \$ 1,074.32 |
| 783561 | Tube - Center 8" - (15" - 4241.8 NRL LVLII) | 030521 | \$ 752.98 |
| 783563 | Tube - Center 8" - (20" - 5765.8 BRL LVLII) | 030531 | \$ 784.66 |
| 783565 | Tube - Center 8" - (20' - 5765.8 NRL LVL II) | 030541 | \$ 918.32 |
| 783567 | Tube - Cener 8" - (22'-6477.8 NRL LVLII) | 031969 | \$ 1,230.50 |
| 783592 | Tube - Center 8" - (16' - 4470.4 NRL LVLII) | 030524 | \$ 754.13 |
| 783615 | Tube - Center 8" - (13' - 3632.2 NRL LVLII) | 030513 | \$ 728.50 |
| 783617 | Tube - Center 8" - (27' - 7849.4 NRL LVLII) | 030569 | \$ 1,274.02 |
| 783635 | Tube - Center 8" - (22' - 6325.4 NRL LVLII) | 031976 | \$ 1,070.24 |
| 783731 | Tube - Center 8" - (18' - 5232.4 NRL LVLII) | 030534 | \$ 856.71 |
| 783828 | Tube - Center 10" - (35' - 10352.2 NRL LVLII) | 032023 | \$ 2,460.01 |
| 783850 | Tube - Center 10" - (30' - 8829.2 NRL LVLII) | 032035, 032080 | \$ 2,050.28 |
| 783925 | Tube - Center 10" - (36' - 10658.1 NRL LVLII) | 032076 | \$ 2,460.01 |
| 783926 | Tube - Center 10" - (36' - 10734.2 NRL LVLII) | 032073 | \$ 2,460.01 |
| 783951 | Tube - Center 10" - (35' - 10276.0 NRL LVLII) | 032082 | \$ 2,477.98 |
| 784151 | Tube - Center 6" - (40' Split -18.4' - 5591.0) | JD 640 FD Split (All Models) | \$ 867.76 |
| 784215 | Tube - Center 10" - (30' - 8753.00 NRL LVLII) | 032138 | \$ 1,953.48 |



HCC, inc.

HCC, inc., 1501 First Ave., Mendota, IL, 61342 - (815) 539-9371 - www.hccinc.com



HCC,
inc.

Channel Bats



HCC, inc.

| Part No. | Description | 2022 List Price |
|----------------------|---|----------------------|
| BAT - CHANNEL | | |
| 781788 | Channel Bat Sheet Metal Assy. 82.00" * | \$ 160.59 |
| 781796 | Channel Bat Sheet Metal Assy. 67.00" * | \$ 131.22 |
| 781836 | Channel Bat Sheet Metal Assy. 80.50" * | \$ 157.65 |
| 781838 | Channel Bat Sheet Metal Assy. 58.75" * | \$ 115.08 |
| 781830 | Channel Bat Sheet Metal Assy. 67.75" * | \$ 132.71 |
| 781841 | Channel Bat Sheet Metal Assy. 64.75" * | \$ 126.84 |
| 781842 | Channel Bat Sheet Metal Assy. 76.75" * | \$ 150.34 |
| 781843 | Channel Bat Sheet Metal Assy. 73.75" * | \$ 144.47 |
| 781845 | Channel Bat Sheet Metal Assy. 81.75" * | \$ 160.13 |
| 781846 | Channel Bat Sheet Metal Assy. 88.75" * | \$ 173.84 |
| 781847 | Channel Bat Sheet Metal Assy. 91.75" * | \$ 179.72 |
| 781848 | Channel Bat Sheet Metal Assy. 84.50" * | \$ 165.49 |
| * 781942 | Channel Bat Sheet Metal Assy. 55.75" * | \$ 109.21 |
| 781943 | Channel Bat Sheet Metal Assy. 79.75" * | \$ 139.47 |
| 781944 | Channel Bat Sheet Metal Assy. 87.75" * | \$ 153.64 |
| 782038 | Channel Bat Sheet Metal Assy. 62.50" * | \$ 109.28 |

~~* CAN ONLY BE ORDERED TWICE A YEAR.~~

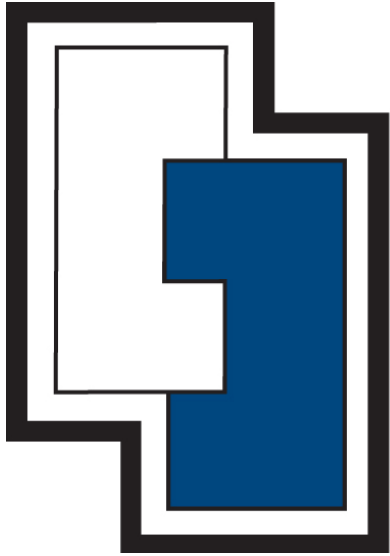
~~ORDER IN APRIL FOR MAY DELIVERY~~

~~ORDER IN AUGUST FOR SEPTEMBER DELIVERY~~



HCC, inc.

HCC, inc., 1501 First Ave., Mendota, IL, 61342 - (815) 539-9371 - www.hccinc.com



HCC, inc.

AFTERMARKET PRICE GUIDE 2022

**Orbit™ Trac II Reels - Flip Reel Kit
Tines - Paddle Tine
Gateway® Sieves/Chaffers
Level II Reels
Level II / ML Service Parts**

HCC, inc.
1501 First Ave.
Mendota, IL, 61342
Effective January 1, 2022

(815) 539-9371
www.hccinc.com