

# ONLINK

GOLF COURSE MANAGEMENT



What's on your mind today?



**EQUIPMENT**

0.085  
HOC Greens

\$3,000.00  
Equipment Cost

96%  
Equipment Availability

**WATER MANAGEMENT**

58,475 gal  
Water Usage

\$110,842.91  
Water Cost

**ONLABOR**

5 PM | 83° F Cloudy, 10% Precip | 6 PM | 83° F Cloudy, 11% Precip

Mow your PPE

**Mow Fairways**  
Nathaniel Beckman 5.0  
F1 (John Deere 7500A)

**Mow Greens**  
Donald Clark 4.0

Fairways  
Greens  
Double - 12-6 (3-9)  
Tees  
Single - 12-6

Deere Horn Golf Club - Cost By Equipment Area - Lifetime



DATE	EQUIPMENT	TIME	COST	TAX
2019-12-05	Tractor	1:00	\$288.00	\$0.00
2020-08-22	Tractor	1:00	\$0.00	\$0.00
2020-08-21	Tractor	1:00	\$0.00	\$0.00

Schedule

DATE	EQUIPMENT	TIME	COST	TAX
2020-08-21	Tractor	1:00	\$0.00	\$0.00
2020-08-22	Tractor	1:00	\$0.00	\$0.00
2020-08-23	Tractor	1:00	\$0.00	\$0.00





Managing irrigation costs.

Balancing crew hours.

Keeping track of maintenance schedules.

How do you keep up, let alone get ahead?

## Let John Deere OnLink Golf Course Management Solutions help.

*With OnLink, you'll improve communication between managers and employees, enhance your facility's organization, and harness data to enable better decision making. Accomplish this and more through integrated labor and fleet management tools enhanced with telematic machine connections.*

### If it's on your mind, it's OnLink.

OnLink can help you balance the load on both your staff and your equipment by providing insight into overtime potential and current equipment hours as you assign each to jobs.

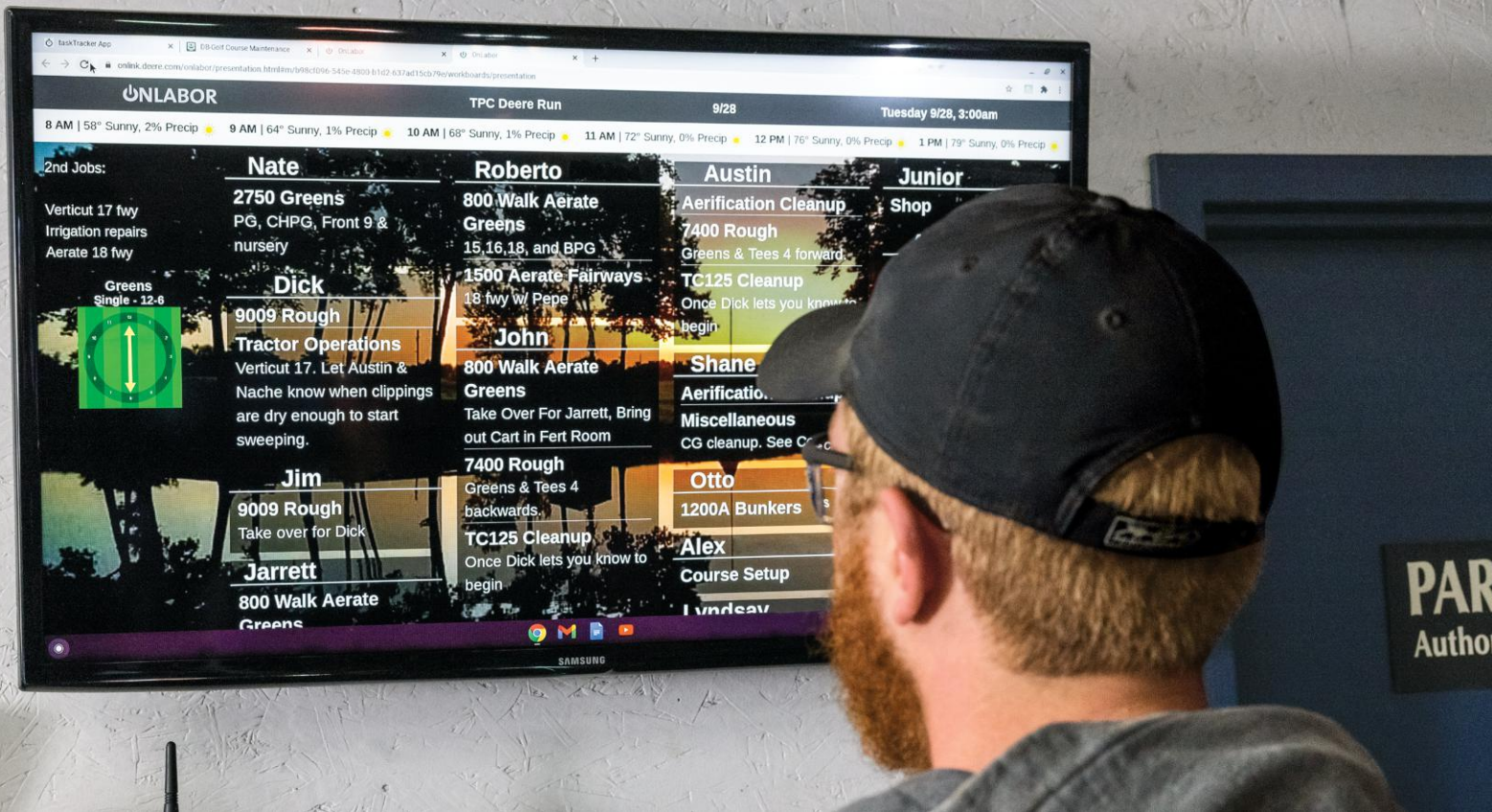
### See all.

Data driven decisions are at your fingertips when you use OnLink. Know what you're spending on jobs on the course or on equipment in the shop. The dashboard will keep you informed on key values and alerts can be setup for when you cross thresholds. And when you need a deeper dive there are a variety of reports to help you dig in deeper.

### Know all. All from one place.

And to make sure you've got all your data in on place for your decisions, OnLink allows entry of additional data such as soil moisture, water usage, and greens speed. OnLink integrates with these industry software solutions to automate data entry or manual entries can be made right on the dashboard.

- **Playbooks** – Fertilizer and chemical costs, product inventory
- **POGO** – Soil moisture, EC and Soil temperature readings
- **Foretees** – Rounds played with player details.
- **Spectrum Technologies** - Soil moisture, EC and Soil temperature readings
- **The Weather Company** - Current and forecast conditions



## Labor Management

### Fast and Easy Job Management

Effective and portable labor information management. Easily view, add, and assign jobs for anyone on your team, from any device, anywhere an internet connection is available. Replace the whiteboard of yesterday with a digital workboard display-- a dynamic, organized alternative.

### Workboard updates made easy

Quickly make changes from your desk or from the course that automatically display on the digital workboard, making it fast and simple for the whole team to stay updated on the latest golf course needs.

### Crew communication, simplified.

With OnLink My Work, your crew can see the work you assign them, and your notes, right from their mobile phone. Personalized to them. Communication and gauging job times will become more accurate and simple.

### Early Warning Indicators

Visual color-coded indicators provide visibility to the user when overtime hours/cost are approaching user defined and customizable thresholds enabling decisions on crew management before overtime costs are accrued.

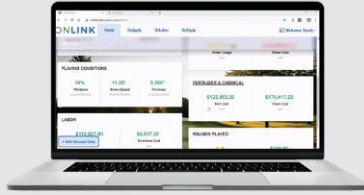
### Reporting

Access a variety of automated reports for dollar allocations, man-hours, and even overtime. All reports are easily exported to Excel. View daily, monthly, and annual reports to gain great insight into how efficiently the operation is running



## Operations at Your Fingertips

Customizable dashboards let you see the information you need all in one place in a format that is optimized for mobile viewing.



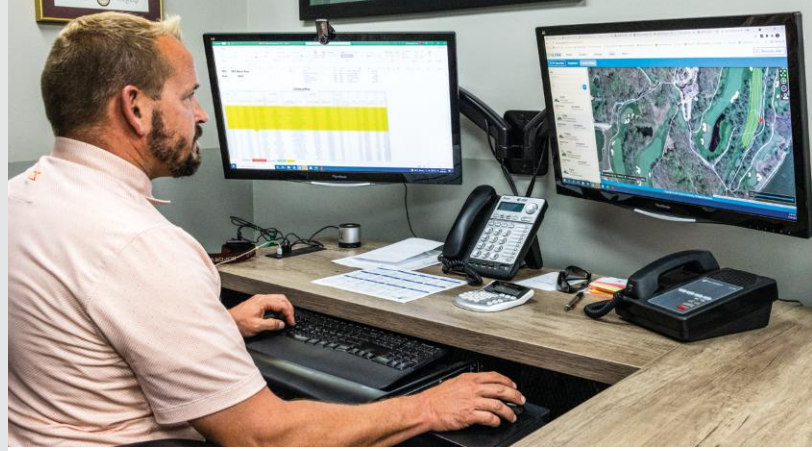
## Labor Management

See the areas of the course that are costing the most in labor. Understand your labor costs for every aspect of your operation.



## Easily Assign Work

Easily assign work and display the assignments on a monitor in the maintenance facility.



“We can track the amount of hours of each piece of equipment to make sure that we’re using them all on a good rotation much more easily.”



### 2700 TRIPLEX MOWER

ENGINE HOURS: 78.5 hours

WORKING: 25.75 min

IDLE: .75 min

TRANSPORT: 9.16 min

For more information on John Deere OnLink Golf Course Management Solutions, check out [Deere.com/en/technology-products/onlink](https://www.deere.com/en/technology-products/onlink)



*John Jeffreys*  
Golf Course Superintendent  
Pinehurst No. 2



## Fleet Management

### High-Level Fleet Overviews & Profiles

Glance at OnEquip to see the state of your fleet while you're on the go. Integration with OnLabor allows the team in the shop to communicate the status of equipment seamlessly with operators and management.

### Scheduled Maintenance + On Demand Repairs

Preloaded maintenance schedules for John Deere equipment are aligned and updated with current factory recommendations allowing the equipment manager or technician to know what and when service is required and what parts are needed to have on hand to complete the job. Additional on-demand work orders for any make equipment can be quickly created for any ad hoc repairs on equipment that comes into the shop.

### Maintenance Schedule Monitoring

Monitoring equipment service needs is easy with the dynamic maintenance list built into the system. Upcoming services are color-coded green, yellow, and red allowing prioritization of work within the shop. A service due tile brings the top 5 priorities right to the user's dashboard.

### Bulk Engine Hours Update

Quickly and easily update equipment engine hours from any internet connected device with a single-entry screen for all equipment. Accurate and up to date hours allow staff to balance usage across the entire fleet and keep maintenance schedules up to date providing better visibility to what services are due.





## Parts Inventory Management

Parts used on recorded services are automatically removed from inventory upon job completion. Customizable thresholds alert the user when inventories require restocking. The system is integrated with the John Deere online parts catalog allowing the user to find the right parts for the job and order directly from their selected dealer.

## Reports

A variety of automated reports provide detailed information on equipment use, availability, and cost of ownership. Detailed equipment information reports for data driven decisions on purchasing or leasing, fleet size, and more. Customizable fleet management practices can be tailored your operation. And all reports are easily exported to Excel.

# Connected Machines

## Equipment Location

Save time locating operators and equipment on the course as well as monitor performance and progress from any internet connected device. Real-time insights into the operation allow for data driven decisions around the day's activities as well as identifying opportunities for adjustments and efficiency improvements.

## Location History

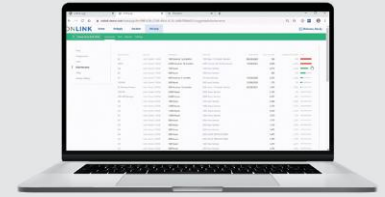
Review color coded location history information for insights into operational data to identify areas of concern and opportunities for efficiency improvements such as route planning, operator training, and more. All this from anywhere on any internet connected device.

## Automatic Engine Hour Updates

Engine hours within the fleet page update in real-time eliminating the need for time consuming manual entry. Plus, dynamically sort maintenance schedules based on service interval timing.

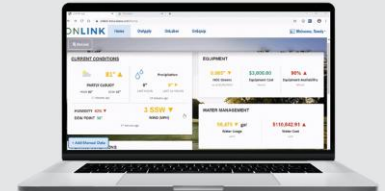
## Fleet Management

See upcoming services due, record service tickets, track equipment availability for job assignments and know your cost of ownership.



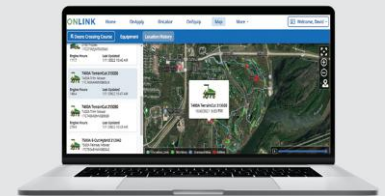
## Environment and Course Conditions

Integrated and input data allows you to see current, forecast and playing conditions all together.



## Connect with Your Machines

Monitor equipment location and location history in real-time from anywhere.



For more information on John Deere OnLink Golf Course Management Solutions, check out [Deere.com/en/technology-products/onlink](https://www.deere.com/en/technology-products/onlink)





If it's on your mind, it's OnLink.

Winged Foot



For more information on John Deere OnLink Golf Course Management Solutions, check out [Deere.com/en/technology-products/onlink](https://www.Deere.com/en/technology-products/onlink)

This literature has been compiled for worldwide circulation. While general information, pictures, and descriptions are provided, some illustrations and text may include finance, credit, insurance, product options, and accessories NOT AVAILABLE in all countries or regions, and in some countries products and accessories may require modifications or additions to ensure compliance with the local regulations of those countries. PLEASE CONTACT YOUR LOCAL DEALER FOR DETAILS. John Deere reserves the right to change specification, design, and price of the products described in this literature without notice. John Deere's green and yellow color scheme, the leaping deer symbol, and JOHN DEERE are trademarks of Deere & Company.



2886800

[JohnDeere.com/Golf](https://www.JohnDeere.com/Golf) | [JohnDeere.ca/Golf](https://www.JohnDeere.ca/Golf)



**JOHN DEERE**  
GOLF