

Orchard and Vineyard

Specialty Tractors



JOHN DEERE



JOHN DEERE SPECIALTY TRACTORS MADE TO FIT YOUR OPERATION'S NEEDS





Farmers from coast to coast rely on Specialty Tractors from John Deere. From width and height to horsepower and features, every specialty model is designed to accommodate unique agricultural operations – including the one you manage.

As you go through this brochure, you'll quickly discover how John Deere Specialty Tractors answer the call of farmers across the country.

5EN	4
5GV/5GN	6
5GL	8
5ML	10
Attachments	12
Frontier Implements	14
JDLINK™	16
Support & Service	17
Specifications	18

THE 5EN NARROW TRACTOR. BIG CAPABILITIES.

- 75 horsepower engine
- Working widths down to 51 inches (1.3 m)
- 12F/12R or 24F/12R PowrReverser™
- Creeper option available

The 5EN narrow frame glides easily through orchards and vineyards—whether spraying, trimming, mowing, fruit handling or transporting.

With a 75-horsepower engine, optional front hitch, and ability to add mid SCVs from the factory for both front and rear implement operation, the 5EN has the versatility to tackle the tough jobs in and around your high value crops. Or anywhere on your operation.

Plus, monitor and manage your operation more effectively with JDLink™, StarFire™ receivers, and AutoTrac™ Universal.





The cab option provides a premium operator experience, with excellent visibility, ergonomically situated controls, throttle system, and clutch pedal.

THE 5GV & 5GN

NARROW, NIMBLE, & READY TO GET IT DONE

- 75, 90 and 100 horsepower engines
- Working widths as narrow as 39 inches (0.99 m)
- Turning radius of 11.9 feet (3.6 m)
- 12F/12F or 24F/12R transmissions
- Open station or cab; MFWD

5GV and 5GN Series are a natural fit for narrow rows and a force around the farm for the most demanding work.

The 5GV, available with a 75 or 90 horsepower engine, features an ultra-narrow design to get you into the tightest spaces. The 5GN is wider, but still narrow and nimble and ranges from 75-100 horsepower.

The 5G Series features engines that deliver excellent fuel efficiency and overall fluid economy while still providing plenty of power and torque for tougher jobs.

The 90 and 100 hp engines feature an optional Intelligent Power Management System (IPM) that provides the punch you need for challenging PTO and transport applications. Get a 5.5% power boost on the 90hp 5G's or 5GN/GV and a 9.9% power boost on the 100 hp 5G.

The 24F/12R PowrReverser™ offers variable working speeds – as well as a creeper transmission – and is suited for work requiring frequent directional changes. It also includes a hi-lo and de-clutch button for quick, efficient transmission and shifting management.



- Economy meets performance: The economy PTO reduces engine RPM by cutting fuel consumption and wear and tear on your engine when doing chores such as rotary cutting and rotary tilling.
- For bigger applications, the 100 hp cab model of the 5GN with MFWD weighs in at 6,559 task-mastering pounds (2975 kg).
- Optional IPM which allows for increased HP ability in PTO applications
- Go the distance: With an oil change interval of 500 hours and a fuel tank capacity of 19.3 gallons (73 L), you'll stay on the job longer.
- An optional 7.4 gallon (28 L) external tank is also available on the 5090GN and 5100GN models so you can maximize your workday.



SQUEEZE THROUGH NARROW ROWS WITHOUT FEELING THE SQUEEZE YOURSELF

First-time and experienced operators alike will appreciate the cab on the 5GN, which provides an efficient workspace along with intuitive, easy-to-reach controls. Doors on both sides deliver impressive all-around visibility, as well as accessibility. And with a climate control system designed for weather extremes, you'll remain comfortable regardless of the conditions.

Slip into rows as narrow as 39 inches (0.99 m) with the 5GV.

The 5GV and 5GN come with an open-center hydraulic system that delivers a chore-mastering 25.5 gpm (96 l/min) of hydraulic power to your workday. That means you can handle heavy drawbar or 3-point mounted implements, as well as tough terrain, without slowing down.

Need even more muscle? No problem. Equip the 5GN with an optional external hydraulic lift cylinder to boost rear lift to 4,400 pounds (1995 kg).


CLEAR THE CANOPY

5GL

STANDING 53.5-IN. TALL AND 53-IN. WIDE,
THE HIGH PERFORMING GL KEEPS A LOW PROFILE
WHILE PROTECTING YOUR HIGH VALUE FRUIT.

- 75 Engine HP, 61 PTO HP
- 24F/12R PowrReverser™ transmission
- Standard MFWD
- DeClutch and Hi-Lo selector

5075GL Low-Profile



The 5075GL hydraulic system offers outstanding performance with standard pump rated output of 25.5 gpm (96.5 L/min) or 33.4 gpm (126.4 L/min) with optional third pump. Includes two rear selective control valves with choice to add two more SCVs.

The 5075GL is proof that good things do, in fact, come in small packages. Its narrow, low-profile, combined with a powerful 75 HP engine and 61 HP PTO, make this machine the perfect fit for the grueling demands of orchards, vineyards and other operations that have height and width restrictions.

With its impressively small stature of 53.5-in. (1.36 m) tall and less than 53-in. (1.35 m) wide - the 5075GL has excellent maneuverability and hydraulic power and this machine easily navigates rows and clears those small, tight spaces when trees are loaded with fruit, protecting the crop from potential damage.

But don't let the small size fool you: the 5075GL was built for power. Whether you're flail mowing, spraying, pushing harvest bins or trailering, this machine provides the engine and PTO horsepower you need to get the job done.



BEST IN CLASS

THE 5ML



From the high-power engine aided by a high-efficiency transmission to the premium cab experience, it's not hard to see what sets the 5ML apart.

The 5ML easily maneuvers orchards and vineyards with a low-profile and working width as narrow as 61" (5ML Narrow). It can be equipped with up to four selective control valves (SCVs), optionally with additional mid-SCV couplers. And with integrated John Deere Precision Ag technology such as JDLink™, StarFire™ 7000, AutoTrac™ and iTEC™ Basic, you have the machine performance and field management tools you need to most effectively monitor and manage your operation.

The factory-installed cab of the 5ML is designed specifically for the challenges of high value crops with comfort, capability and protection top of mind. It comes immediately ready for the field, which means less down time and installation costs. Programmable, bright LED lights keep you productive at night or in low light conditions. Optional features like limb lifters protect your sensitive crops, while the Category IV filtration system prevents dust and harmful materials from getting into the cab.



A. TRANSMISSIONS

The 5ML offers you not one but three transmission choices – the PowrReverser™, PowrQuad™ PLUS, or the Powr8™. All options come with a left-hand reverser for clutch-free forward and reverse directional changes; plus a convenient, right-hand declutch button to easily change ranges.

B. HORSEPOWER

With horsepower ranging from 105-130, John Deere PowerTech™ engines provide plenty of power to operate larger-sized implements to help you accomplish more in less time.

C. INCREASED HITCH CAPACITY

Along with greater horsepower, the increased hitch capacity of the 5ML (optional on 105 and 120 horsepower models) helps maintain the load of your bigger implements. A larger hitch cylinder (up to 80mm) elevates your total capacity to 7,868 pounds (OOS) – making this tractor even more capable around the farm.

D. HYDRAULIC SYSTEMS

The 5ML Series features open center hydraulics on the 5105ML and 5120ML (OOS) with a standard pump rated output of 24.7 gpm (93.5 L/min), while the 5130ML comes equipped with a standard pressure flow compensated closed center hydraulic system with 31gpm (117 L/min) rated output. Closed center is optional on 5105ML/5120 ML. All models provide three selective control valves.

E. COOLING PACKAGE

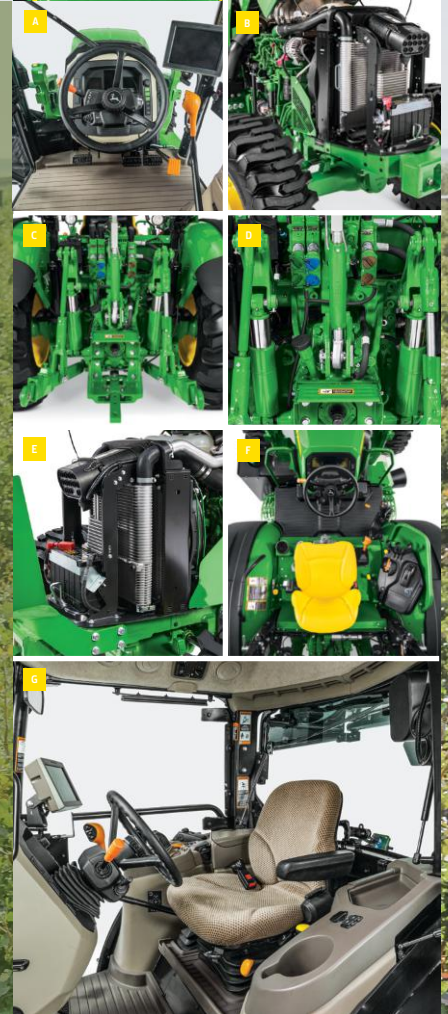
John Deere designed the 5ML with superior cooling packages to minimize engine heat. In addition to reducing heat and keeping the tractor cooler, it also extends the life of your components and reduces fluid consumption – keeping your machine in tip-top shape for years to come.

F. OPEN OPERATOR STATION

Performance is important, but so is comfort. That's where the isolated operator station comes in with its relaxing, low-profile seat to help ease you into the workday. Complemented by a sloping hood, you'll also realize the benefit of superior visibility. And let's not overlook improved floor mats that reduce engine vibration for a quieter ride.

G. PREMIUM FACTORY-INSTALLED CAB

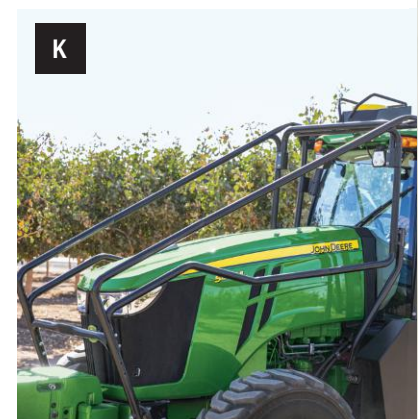
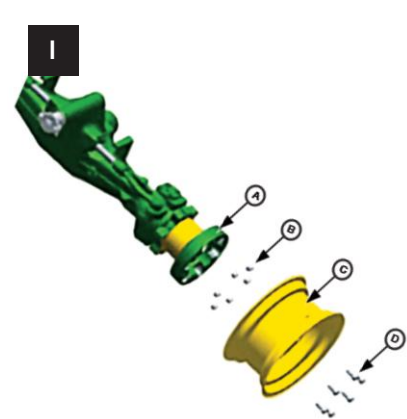
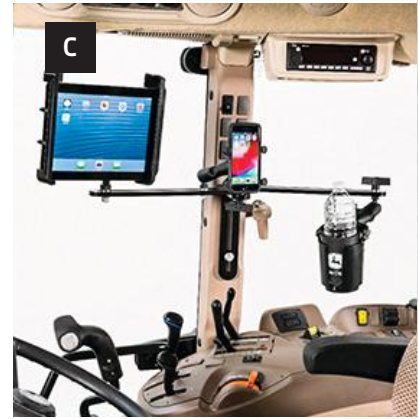
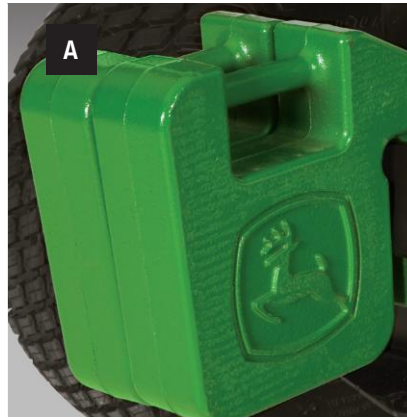
Enjoy head to toe comfort with spacious headroom, unmatched visibility, customizable digital display, ergonomically placed controls, intelligent programmable LED lights, plenty of storage, and a flat floor for more leg room.



ATTACHMENTS


ADD MORE
COMFORT,
CONVENIENCE,
SECURITY, &
PRODUCTIVITY

Set your tractor up just the way you want by adding quality John Deere attachments and accessories. Plus, when it comes time to trade or sell, your investment could be worth more. This is just a sampling of the attachments available for the Specialty Tractors. See your John Deere dealer for all your parts and attachments needs.



A. Front Quik-Tatch™ Weights

Add front-end ballast with individual weights that feature molded-in handles for easy installation and removal.

B. Rear Wheel weights

Properly ballast your tractor with rear wheel weights to get greater traction in treacherous ground conditions.

C. Mounting Solutions (5ML Specific)

Keep items such as John Deere displays, cell phone, tablet, cup holder, or aftermarket products in place and within reach.

D. CAT IV Cabin Air Filtration System

Reduce exposure and provide greater protection against harmful substances such as particulates, aerosols, and vapors.

E. JD Link™

From planning to harvest, only John Deere seamlessly connects machines, people, technology, and insights to give you an advantage. John Deere develops precision technology specifically for the tractors, combines, sprayers, planters, hay, and tillage products you own.

F. Front Hitch Kit (5ML Specific)

Quickly install snow blowers, brooms and blades to the front of the tractor.

G. Beacon Lights (5ML Specific)

John Deere beacon light kits increase on-road visibility. For convenience, a cab-mounted rocker switch turns the light on and off.

H. Front Fenders (5ML Specific)

Made from durable rubber, front fenders protect your tractor and keep it clean. The John Deere logo adds a touch of style.

I. Front Axle Spacers (5EN Specific)

Axle spacers allow the tractor track width to be adjusted to improve row spacing and crop clearances.

J. CAT 2 Quick Hitch

Light weight cast design allows for strength and durability without interfering with rear fenders.

K. Limb Lifters (5ML Specific)

Crops and branches to go up and over the tractor while driving through the rows reducing the risk of tree damage and possible yield loss.



JOHN DEERE & FRONTIER EQUIPMENT

JUST THE RIGHT FIT

From disk harrows to wood chippers to rotary cutters to land planes, John Deere and Frontier Equipment offer a wide variety of front and rear attachments designed specifically for your tractor. Your John Deere dealer is the exclusive source for the full line of Frontier implements and attachments.

See your John Deere dealer, or visit us online, to find out more about our complete line of implements:

Disks
Buckets
Sprayers
Overseeders
Bale Handling
Rotary Tillers

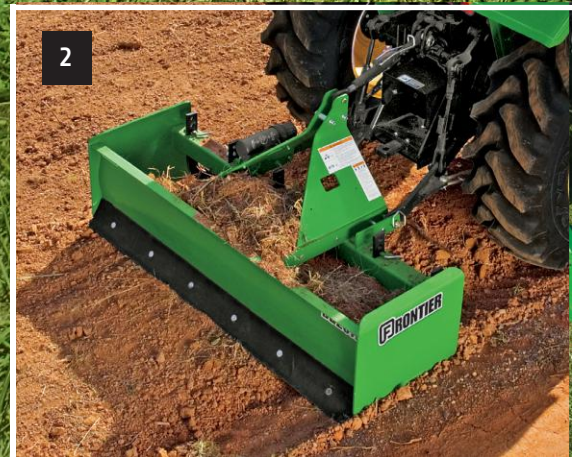
Rotary Cutters
Pallet Forks
Rear Blades
Debris Grapples
Wood Chippers
Land Planes

Power Rakes
Debris Blowers
Box Blades
Broadcast Spreaders
Post Hole Diggers

In the U.S., visit us online at www.BuyFrontier.com and in Canada at www.BuyFrontier.ca to get specifications and application information.



Frontier Equipment will make your specialty tractor even more useful. From 1. rotary cutters 2. box blades 3. finishing mowers 4. aerators 5. grapples you can find what you need to take on a huge variety of chores.





CONNECT TO WHAT COUNTS

You'll be in control and more connected to your tractor with JDLink™.* Being connected gives you the convenience of having all the information you need to run your tractor when you want, and the confidence that if a problem arises, you'll know what to do or have remote support available from your Dealer if you need more help. As a high-value crop producer, you'll gain more time to work on your operation, as well as tools to manage your business, and make data-driven decisions by being connected. JDLink provides visibility to your whole fleet in once place, so you can tell where it is and what it needs, as well as information about machine location and performance to enable training and improved efficiency. No matter your needs, JDLink helps you manage your land, your equipment, and your crop.



* Some additional accessories and components may be required. JDLink requires a cellular connection to transfer information from machine to John Deere Operations Center™ website. See your John Deere Dealers for coverage availability.

SUPPORT & SERVICE

The John Deere Difference

Your John Deere equipment is a long-term investment. We understand that and provide more parts and an unrivaled dealer network to support you with:

- » The Right Part for Any Budget
- » Highly Trained Expert Technicians
- » 12 Months Parts & Labor Warranty
- » Short & Long Term Financing Options

John Deere Financial

John Deere Financial offers value no other lender can—a deep understanding of your industry, unmatched equipment expertise, and personalized financial solutions that can be quickly arranged through your dealer at the time of your purchase.

Visit JohnDeereFinancial.com to learn more.

Protect Your Investment

PowerGard™ Protection Plan lets you purchase additional protection beyond the normal John Deere factory warranty. In addition, you can lock in annual maintenance costs on select John Deere products with the John Deere Protect Maintenance, Maintenance Plus Plan, or Maintenance Plus Wear Plan.

Ask your dealer for details, or visit us online at www.powergard.com | www.powergard.ca.



ORCHARD & VINEYARD TRACTORS

MODELS	5075GV	5090GV	5075GN	5090GN	5100GN
ENGINE					
Aspiration	Turbocharged	Turbocharged	Turbocharged	Turbocharged	Turbocharged
Cylinders/Displacement, cu. in. (L)	4/206.7 (3.4)	4/206.7 (3.4)	4/206.7 (3.4)	4/206.7 (3.4)	4/206.7 (3.4)
FUEL TANK CAPACITY, US GAL. (L) (OPEN; CAB)					
Standard	22.7 (86)	19.3 (73)	22.7 (86)	19.3 (73)	19.3 (73)
Optional	N/A	N/A	30.1 (114)	26.7 (101)	26.7 (101)
TRANSMISSION					
Opt. Transmission; Forward/Reverse	24F/12R PowrReverser	24F/12R PowrReverser	24F/12R PowrReverser	24F/12R PowrReverser	24F/12R PowrReverser
Clutch; Wet/Dry	wet (24F/12R PowrReverser)	wet (24F/12R PowrReverser)	wet (24F/12R PowrReverser)	wet (24F/12R PowrReverser)	wet (24F/12R PowrReverser)
PTO (POWER TAKE-OFF)					
Standard (shiftable)	Independent 540/ 540 Economy	Independent 540/ 540 Economy	Independent 540/ 540 Economy	Independent 540/ 540 Economy	Independent 540/ 540 Economy
PTO Actuation - Standard/Optn	Mechanical/Electrohydraulic	Mechanical/Electrohydraulic	Mechanical/Electrohydraulic	Mechanical/Electrohydraulic	Mechanical/Electrohydraulic
HYDRAULICS					
Type	Open Center	Open Center	Open Center	Open Center	Open Center
Pump Rated Output, GPM (L/min.) Standard/Optional	25.6 (97)/33.3 (126)	25.6 (97)/33.3 (126)	25.6 (97)/33.3 (126)	25.6 (97)/33.3 (126)	25.6 (97)/33.3 (126)
Rated Flow @ One SCV, GPM (L/min.)	17 (64)	17 (64)	17 (64)	17 (64)	17 (64)
Remote Control Valves Available	2 std. (up to 4 opt.)	2 std. (up to 4 opt.)	2 std. (up to 4 opt.)	2 std. (up to 4 opt.)	2 std. (up to 4 opt.)
Hitch Category (SAE Designation)	1/1N	1/1N	2/1	2/1	2/1
Front Hitch Compatible	NA	NA	Yes	Yes	Yes
Hitch Lift Cap. lb (kg) @24 in. Bhnd Lift Pt. (ASAE)	3,593 (1630)	3,593 (1630)	3,593 (1630)	3,593 (1630)	3,593 (1630)
OPEN OPERATOR STATION (Rollover Protective Structure, OOS)					
Rigid - Foldable - Telescopic	Foldable, 2-Post	Foldable, 2-Post	Foldable, 2-Post	Foldable, 2-Post	Foldable, 2-Post
CAB					
Seat Suspension System	Mechanical (Opt. Air Ride)	Mechanical (Opt. Air Ride)	Mechanical (Opt. Air Ride)	Mechanical (Opt. Air Ride)	Mechanical (Opt. Air Ride)
MFW DIMENSIONS					
Wheelbase, in. (mm)	82.6 (2,098)	82.6 (2,098)	82.6 (2,098)	82.6 (2,098)	82.6 (2,098)
Minimum Rear Working Width, in. (mm)	39 (991)	39 (991)	49.5 (1,257)	49.5 (1,257)	49.5 (1,257)
Front Axle Clearance, in. (mm) min - max	8.9 - 10.5 (227 - 267)	8.9 - 10.5 (227 - 267)	10 - 11.4 (254 - 289)	10 - 11.4 (254 - 289)	10 - 11.4 (254 - 289)
Approx. Ship Wgt, lb (kg) Open; Cab	5,578 (2,530); 6,052 (2,745)	5,578 (2,530); 6,052 (2,745)	5,864 (2,660); 6,559 (2,975)	5,864 (2,660); 6,559 (2,975)	5,864 (2,660); 6,559 (2,975)

*Product features are based on published information at the time of publication and are subject to change without notice. All trademarked terms, including John Deere, the leaping deer symbol and the colors green and yellow used herein are the property of Deere & Company, unless otherwise noted. Availability of products, product features, and other content on this site may vary by model and geographic region. Engine horsepower and torque information for non-Deere engines are provided by the engine manufacturer for comparison purposes only. Actual operating horsepower and torque will be less. Refer to the engine manufacturer's Web site for additional information. Copyright © 1994-2018 Deere & Company. All Rights Reserved.

ORCHARD & VINEYARD TRACTORS

MODELS	5075EN	5075GL	5105ML	5120ML	5130ML
ENGINE					
Type	3 cylinder: 2.9L 179 cu in.	4-cylinder: 3.4 L 207 cu in.	4-cylinder: 4.5 L 276 cu in	4-cylinder: 4.5 L 276 cu in	4-cylinder: 4.5 L 276 cu in
Rated Engine Power HP (kW)*	74 (55) @ 2,100 rpm	75 (56) @ 2,300 rpm	105 (77.4) @ 2,200 rpm**	120 (92) @ 2,200 rpm**	130 (99.7) @ 2,200 rpm
Rated PTO power HP (kW)	OOS: 60.3 (45) @ 2,100 rpm Cab: 57.6 (43) @ 2100 rpm	61 (45.5) @ 2,300 rpm	90 (66.2) @ 2,100 rpm**†	114 (85) @ 2,200 rpm**†	115 (85.7) @ 2,100 rpm
Fuel capacity, US gal (L)	17.43 (66)	19.3 (73.1)	PowrReverser: 29.6 (112) PowrQuad/Powr8: 38 (144)	PowrReverser: 29.6 (112) PowrQuad/Powr8: 38 (144)	38 (144)
TRANSMISSION					
Base equipment	12F/12R PowrReverser	24F/12R PowrReverser	OOS: 16F/16R PowrReverser Cab: PowrQuad PLUS 16F/16R	OOS: 16F/16R PowrReverser Cab: PowrQuad PLUS 16F/16R	OOS/Cab: PowrQuad PLUS 16F/16R
Optional transmissions	24F/12R PowrReverser	--	OOS: PowrQuad™ PLUS 16F/16R and Powr8™ 32F/16R	OOS: PowrQuad™ PLUS 16F/16R and Powr8™ 32F/16R	OOS: Powr8™ 32F/16R
Optional transmissions	---	--	Cab: Powr8™ 32F/16R with creeper	Cab: Powr8™ 32F/16R with creeper	Cab: Powr8™ 32F/16R with creeper
Creeper option available	Yes	No	Available with Cab	Available with Cab	Available with Cab
Drive	MFWD	MFWD	MFWD	MFWD	MFWD
PTO					
Type	Standard: 540/540E	Independent 540/540E	OOS Standard: 540/540E OOS Optional: 540/540E/1000 Cab: 540/540E/1000	OOS Standard: 540/540E OOS Optional: 540/540E/1000 Cab: 540/540E/1000	Standard: 540/540E/1000
Actuation	Electrohydraulic	Mechanical/Electrohydraulic	Electrohydraulic	Electrohydraulic	Electrohydraulic
HYDRAULICS					
Type: Base/Option	Open Center	Open Center	Open Center/Closed Center	Open Center/Closed Center	Closed Center
Pump rated output GPM (L/min) Base/Option	17.4 (69.5)	25.6 (97)/33.3 (126)	OOS: 24.7 (94)/31 (117) Cab Standard: 31 (117)	24.7 (94)/31 (117)	31 (117)
Rear SCVs, Base/Option	2 up to 3	2 up to 3	3	3	3
Mid SCVs, Base/Option	0 up to 2	0	0 up to 3	0 up to 3	0 up to 3
Hitch category, SAE	2N/Convertible to 2 and 1	1/2	2	2	2
Max Lift Cap. Bhd Lift Pts lb. (kg)	3,604 (1,390)	5,620 (2,549)	OOS: 4,900 (2,223)-7,868 (3,569) Cab: 5,996 (2,720)-6,883 (3,122)	OOS: 4,900 (2,223)-7,868 (3,569) Cab: 5,996 (2,720)-6,883 (3,122)	OOS: 6,975 (3,164)-7,868 (3,569) Cab: 5,996 (2,720)-6,883 (3,122)
DIMENSIONS					
Wheelbase, in (mm)	76.8 (1,950)	81.6 (2,072.64)	OOS/Cab: 92.5 (2,350) Narrow: 90.5 (2,300)	OOS/Cab: 92.5 (2,350) Narrow: 90.5 (2300)	OOS/Cab: 92.5 (2,350) Narrow: 90.5 (2300)
Minimum width (mm)	76.8 (1,950)	53 (1,346)	Standard: 71.9 (1,825) Narrow: 62.3 (1,582)	51.9 (1,319)	51.9 (1,319)
Height to top of Cab, in. (mm)	90.2 (2,291.08)	NA	69 (1,755)	89 (2,260)	89 (2,260)
Height to top of ROPS in. (mm)	107 (2,740)	96.7 (2,457)	67.3 (1,709)	67.3 (1,709)	67.3 (1,709)
Height when ROPS are folded in. (mm)	61 (1,621)	53.5 (1,359)	40.3 (1,023)	40.3 (1,023)	40.3 (1,023)
MFWD front axle grd clearance in. (mm)	11 (283)	8.85 (225)	Cab: 14.9 (379)	Cab: 14.9 (379)	Cab: 14.9 (379)
Turning radius ft. (m)	15.3 (4.65)	11.25 (3.43)	OOS: 11 (3.35) Cab: 13 (4)	OOS: 11 (3.35) Cab: 13 (4)	OOS: 11 (3.35) Cab: 13 (4)
Average shipping weight, MFWD	OOS: 6,029 lb (2,735 kg) Cab: 6,812 lb (3,090 kg)	OOS: 6,404 lb (2905 kg)	OOS: 8,740 lb (3,964 kg) Cab: 10,640 lb (4826 kg)	OOS: 8,740 lb (3,964 kg) Cab: 10,640 lb (4826 kg)	OOS: 9,280 lb (4209 kg) Cab: 10,640 lb. (4,826 kg)

*Manufacturer's estimate of power (ISO) per 97/68/EC. Power output is within + or - 5% at standard SAE J 1995 and ISO3046. **Horsepower at rated speed effective Spring 2012. †PTO horsepower will vary based on tractor configuration.
- All specifications subject to change. See dealer for details. ‡The 16/16 PowrQuad is the only transmission available on the 6M Low Profile Orchard configuration.

DISCOVER ORCHARD & VINEYARD TRACTORS AT JOHNDEERE.COM/SPECIALTY



This literature has been compiled for worldwide circulation. While general information, pictures and descriptions are provided, some illustrations and text may include finance, credit, insurance, product options and accessories NOT AVAILABLE in all regions. PLEASE CONTACT YOUR LOCAL DEALER FOR DETAILS. John Deere reserves the right to change specification, design and price of the products described in this literature without notice. John Deere's green and yellow color scheme, the leaping deer symbol, and JOHN DEERE are trademarks of Deere & Company.

