



KELLEY
— MANUFACTURING —



B750 SERIES

**POWERFUL
PERFORMANCE**

3-POINT- ATTACHMENT

FEATURES

1. DOUBLE HYDRAULIC SWING CYLINDERS WITH KELLEY EXCLUSIVE PATENTED HYDRAULIC SWING CUSHIONING.

2. SIX-SPOOL SECTIONAL CONTROL VALVE WITH ADJUSTABLE MASTER RELIEF VALVE. SAFETY UNLOAD FEATURE ON BOOM CIRCUIT FOR OPERATOR PROTECTION. SUPERB VALVE FEATHERING CHARACTERISTICS FOR OPERATIONAL CONTROL.

3. TWO LEVER HYDRAULIC CONTROL FOR EASE OF OPERATION.

4. STURDY TUBULAR AND BOX DESIGN FOR THE FRAME, BOOM, AND DIPPER STICK ASSEMBLIES.

5. ALL PLATED PIN ARE LOCKED IN PLACE FOR MAXIMUM WEAR PROTECTION, FITTED FOR GREASE WITH REPLACEABLE STEEL WEAR BUSHINGS AT MAJOR PIVOT POINTS.

6. SEVEN POWERFUL DOUBLE-ACTING HYDRAULIC CYLINDERS FEATURING NITROSTEEL® BLACK PISTON RODS FOR SUPERIOR WEAR AND CORROSIVE RESISTANCE OVER CHROME SHAFTS AND HIGH QUALITY INTERNAL SEALS FOR DEPENDABLE LONG LIFE PERFORMANCE.

7. BACKHOE IS EQUIPPED WITH A TRANSPORTATION BOOM LOCK.

8. WIDE STANCE HYDRAULIC FOLDOUT STABILIZER LEGS FOR SUPERIOR OPERATING CONTROL.

9. RUBBER STREET PADS FOR STABILIZER LEGS AVAILABLE.

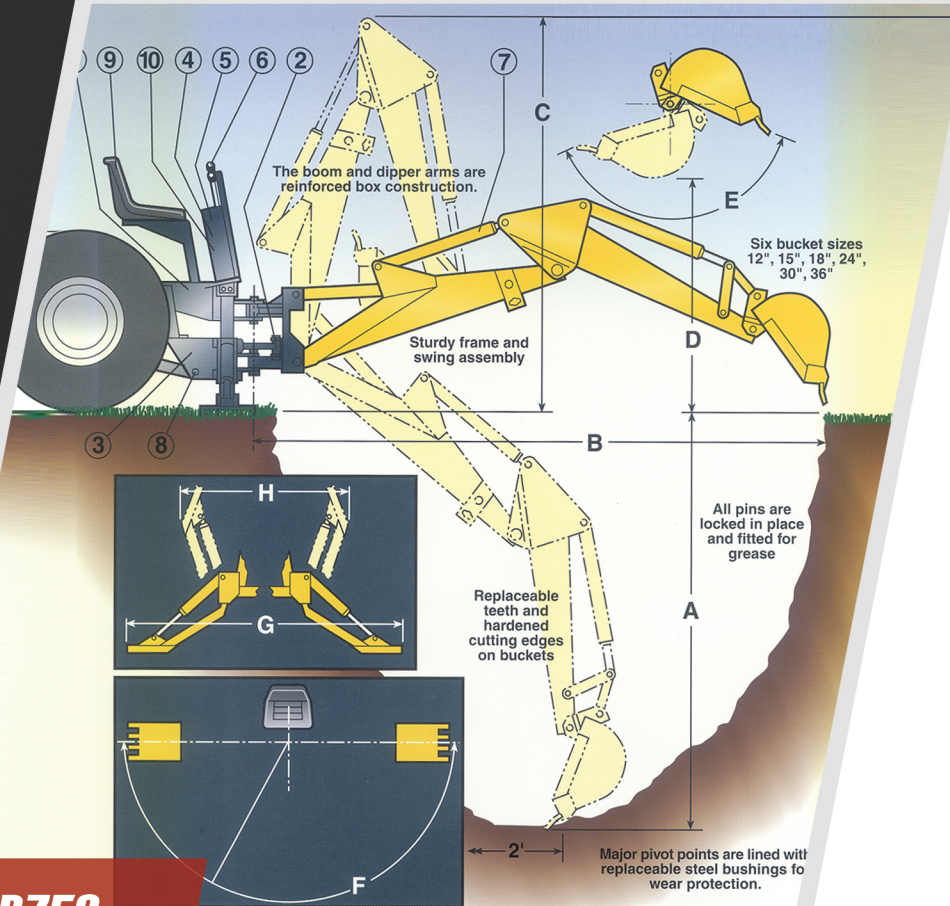
10. OPTIONAL INDEPENDENT 540 RPM PTO HYDRAULIC PUMP SYSTEM IS COMPLETE WITH RESERVOIR, 8 GPM PUMP, FILTER, HOSES AND MOUNTING PARTS.



B750 BUCKET



B750



B750

B750 BACKHOE SPECIFICATIONS

A. MAXIMUM DIGGING DEPTH	8'0"
DIGGING DEPTH WITH 2' FLAT BOTTOM	7'6"
B. REACH FROM SWING PIVOT	10'11"
C. TRANSPORT HEIGHT	7'10"
D. BUCKET CLEARANCE	6'6"
E. BUCKET CURL	165°
F. SWING ARC	180°
G. STABILIZER SPREAD, OPERATION POSITION	7'0"
H. STABILIZER SPREAD, TRANSPORT POSITION	5'8"
BUCKET PRY-OUT POWER	6,900 LBS.
BUCKET CURL POWER AT CUTTING LIP	3,200 LBS.
CROWD POWER AT END OF DIPPER STICK	1,692 LBS.
HYDRAULIC SYSTEM RELIEF VALVE SETTING	2,000 PSI

BUCKET WIDTH	STRUCK CAPACITY	WEIGHT
9"	0.68 CU. FT.	60 LBS.
12"	0.90 CU. FT.	65 LBS.
15"	1.13 CU. FT.	75 LBS.
18"	1.35 CU. FT.	85 LBS.
24"	1.80 CU. FT.	105 LBS.

PART NO	HYDRAULIC CYLINDER	ROD DIAMETER	PISTON DIAMETER	STROKE
05-550-000	BOOM	1 3/8"	2 1/2"	20"
05-510-000	DIPPER STICK	1 3/8"	2 1/2"	14"
05-500-000	BUCKET	1 3/8"	2 1/2"	14"
05-530-000	SWING	1 3/8"	2 1/2"	10"
05-540-000	SWING	1 3/8"	2 1/2"	10"
05-520-000	STABILIZER	1 3/8"	2	10"

- TRACTOR HYDRAULICS MUST BE RATED FOR 2000 PSI
- 20 TO 45 HP TRACTORS WILL FIT B750



KELLEY
— MANUFACTURING —





KELLEY

— MANUFACTURING —

419-453-5539

131 PROGRESSIVE DRIVE

BOX 276

OTTOVILLE, OH 45876

WWW.KELLEYMANUFACTURING.COM