



Prototype shown.

2018 BALE WRAPPERS

Vermeer

EQUIPPED TO
DO MORE.®

Protecting bales and their nutrient value helps ensure your livestock can enjoy high-quality feed throughout the year. This is especially important among large volume hay operators and custom operators. Vermeer has these customers in mind with the BW5500 inline bale wrapper which provides fast wrapping times, more operational control and airtight wrapping for better nutrient preservation.

The three plastic film pre-stretchers on the BW5500 help increase wrapping speed over machines with only two pre-stretchers. The user-friendly precision controller lets you apply a consistent number of wraps on bales with automation that consistently adjusts the wrap settings for environmental variations, helping to minimize the amount of plastic used while wrapping bales tight to reduce the chance of spoilage. Plus, an easy-to-read LCD screen with resettable bale counter makes it simple to track operational data, eliminating the need to count bales manually.

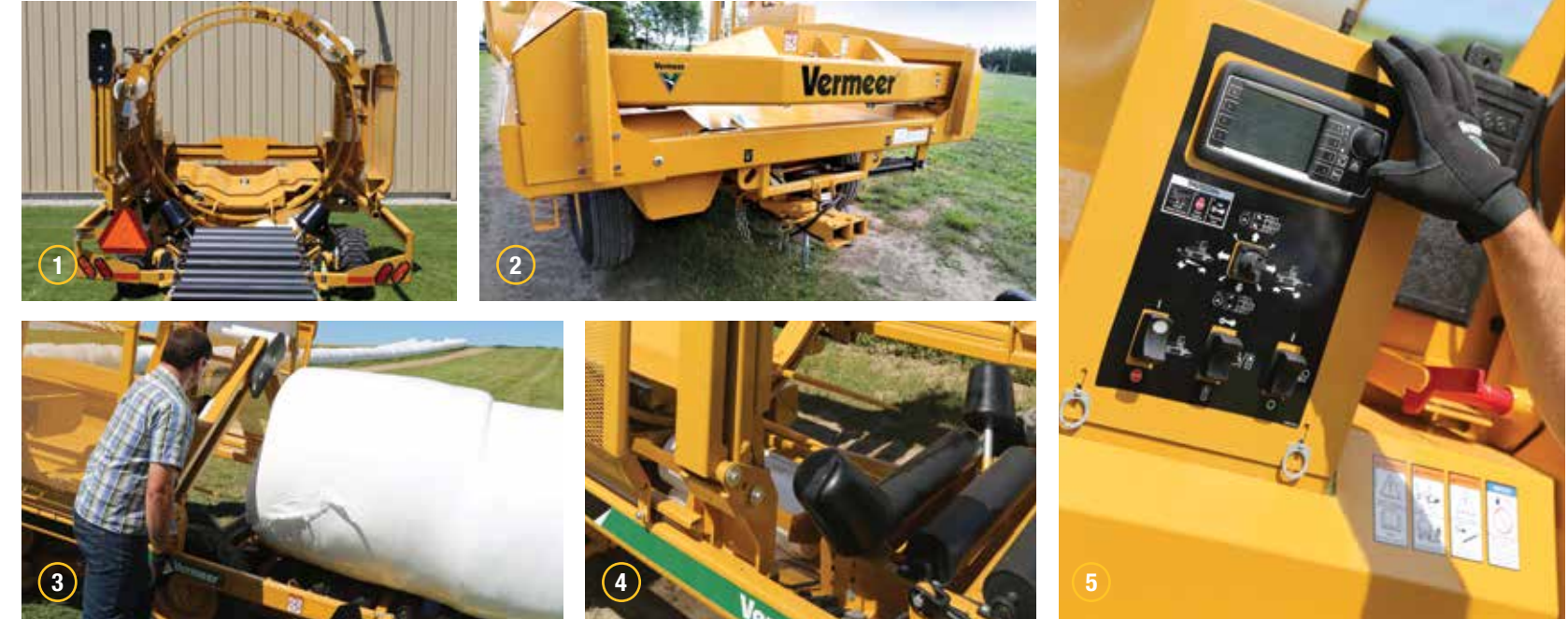
Faster wrapping times. More operational control. And airtight wrapping for better bale protection, even against unfriendly weather. The BW5500 inline bale wrapper is built to handle the high-volume production needs of larger operations and custom operators.

BW5500 INLINE BALE WRAPPER

Put up more hay in a day by extending the wrapping window into the evening with optional LED night work lights.



Prototype shown.



Prototype shown in above photos.

- 1 Contains three 30 in (76.2 cm) pre-stretchers to wrap faster and increase the time before plastic film refill is needed compared to machines with only two pre-stretchers. The standard hoop can now handle 6 ft (1.8 m) bales, giving the operator the flexibility to wrap cornstalks or large dry hay bales in addition to wet hay.
- 2 The hitch is conveniently located on the loading side of the machine for easy access to the tongue. This allows you to pull the machine away from the line of bales without requiring a power drive on the bale wrapper.
- 3 Optional spring-assisted final bale push-off. Positioned across the rear side of the wrapper, this optional feature effortlessly pushes the final bale off the wrapper.
- 4 Optional discharge guide rollers help prevent bales from shifting while wrapping on an incline or uneven terrain.
- 5 Digital controller and precision counter. The user-friendly and easy-to-read precision controller gives you the ability to set a consistent number of wraps for each bale. The controller adjusts hydraulic flow automatically to apply the right number of wraps, which helps reduce the amount of wasted plastic and optimizes wrap usage in order to reduce the chance of spoilage. A soft start feature progressively starts the movement of the hoop, which is designed to reduce machine wear and limit the change of plastic film tearing on startup.

What's driving the baleage trend? Putting up high-moisture hay provides more flexibility to producers by shortening the hay-making window. It enables producers to put hay up at the highest quality and avoid Mother Nature's constant challenges. What's more, wrapping high-moisture hay helps increase palatability and intake with high-quality, high-energy, high-protein forages. This means improved feed efficiency and reduced protein additive costs, leading to increased weight gains and milk production of your beef and dairy herds.

The new Vermeer SBW-series single bale wrappers allow producers to wrap wet bales in individually-wrapped, high-nutrition packages. Ideal for small- to mid-sized operations, the SBW8000 and SBW8500 are designed to boost production output and enhance operator convenience.

A new in-cab electronic control system features a color touchscreen that provides an automated wrapping process and access to real-time field statistics. The rugged frame and turn table spins the bale to ensure the appropriate amount of wraps are applied evenly on the bale. Pre-stretchers help the plastic film cling to the bale, ultimately keeping air out. These single bale wrappers are designed to facilitate effective production of high-quality baleage.

SBW8000/SBW8500 SINGLE BALE WRAPPERS



- 1 The in-cab, color touchscreen and keypad control system allow operators to follow an automated or manual wrapping process — and even interrupt mid-wrap if needed. Operators can see field and total bale stats while controlling all functions of the wrapping process.



- 2 The loading arm on the SBW8000 and SBW8500 single bale wrappers guides and positions the bale gently onto the wrapping table. The SBW8500 increases operating efficiency by loading and carrying a second bale during the wrapping process. The loading arm can also be folded to a narrow transport width.
- 3 Easy unloading is the key to optimizing plastic usage and wrapping quality. The bale discharge system pivots up to cradle the bale, while ground support bracing takes the weight of the high-moisture bale off the chassis and minimizes damage to the package with a lower drop point. (Available only on the SBW8500).
- 4 As soon as the wrapping table tips backwards, the active bale discharge system is triggered. As the finished bale is being lowered to the ground, a cut-start system neatly slices the film and secures it for the start of the next wrapping cycle.
- 5 The SBW8000 and SBW8500 have the ability of gently tipping wrapped bales when unloading so they sit on their end, making it easier for barn stacking. This end tip feature is an option on the SBW8000 and is standard on the SBW8500.
- 6 The ability to store three rolls of plastic film on the machine allows operators to be productive and stay in the field while it is time to wrap. The storage stays clear of the machine operating but provides easy access when it is time to reload.

Looking for a value-priced, individual silage wrapper without all the extras? The SBW4000 handles smaller packaged bales and features a low-profile wrapping table. This basic silage wrapper features static operational control for part-time operators looking to do a small to moderate amount of baleage.



SBW4000 SINGLE BALE WRAPPER



BW5500 SPECIFICATIONS

DIMENSIONS	BW5500
Transport length	18 ft (5.5 m)
Transport height	9 ft (2.7 m)
Transport width	8 ft (2.4 m)
Weight	5000 lb (2268 kg)
SPECIFICATIONS	
Engine	13 HP or 20 HP Honda
Alternator	18 amp
Hydraulic type	Self-contained
Controls	Digital controller with LCD display
Tire size	(2) 11L x 15 (8) Ply (2) 27 x 10.5 traction
Hitch	Drawbar
Steering	Electric over hydraulic joystick
Film stretcher	(3) 30 in x 55 percent
Bale alignment	Fixed bale guides
Wrapping capacity	120 bales/hr
Hoop speed	Digital controller adjusted
Bale size maximum	6 ft x 5 ft (1.7 m x 1.5 m) round
Engine start	Electric

SBW8500/SBW8000/SBW4000 SPECIFICATIONS

DIMENSIONS	SBW8500	SBW8000	SBW4000
Transport height	9 ft (2.7 m)	7.4 ft (2.3 m)	7.25 ft (2.2 m)
Transport width	7.4 ft (2.3 m)	8.3 ft (2.5 m)	6.25 ft (1.9 m)
Total length	19 ft (5.8 m)	15.4 ft (4.7 m)	12.1 ft (3.7 m)
Weight	4600 lb (2086.5 kg)	2600 lb (1179.3 kg)	2020 lb (916.3 kg)
Tire size	380/55 x 17	10.0/70 x 15.3	20.5 x 8 x 10
TRACTOR REQUIREMENTS			
Horsepower requirements	55 hp (41 kW)	41 hp (31 kW)	25 hp (19 kW)
Hydraulic type	1 – Single acting, return to tank	1 – Single acting, return to tank	1 – Double acting
Hydraulic flow rate	6-8 gpm (23-30 lpm)	6-8 gpm (23-30 lpm)	4 gpm (15.1 lpm)
Hitch	Drawbar	Drawbar	Drawbar
Electrical	12 VDC	12 VDC	12 VDC optional
SPECIFICATIONS			
Bale size - maximum	5.2 ft x 5 ft (1.6 m x 1.5 m)	5 ft x 4 ft (1.5 m x 1.2 m)	5 ft x 5 ft (1.5 m x 1.5 m)
Bale weight - maximum	3300 lb (1500 kg)	2200 lb (1000 kg)	2500 lb (1143 kg)
Film stretcher	55 or 70 percent	55 or 70 percent	55 percent

OPTIONAL FEATURES

- ▶ Remote steer, engine start/stop
- ▶ (3) LED night work lights
- ▶ Discharge guide rollers
- ▶ Plastic sensor alert
- ▶ Spring-assisted final bale push-off

PLEASE SEND MAKIN' HAY MY WAY!



Sign up for your **FREE** subscription or refer a friend and get rollin'!
makinhay.com



POST-SEASON MAINTENANCE

We know that you count on your baler to perform day in and day out. Let us help you maintain that high performance with our post-season maintenance programs. Check with your local Vermeer Dealer for exclusive offers each fall including maintenance checks and performance adjustments so you will be ready to go at the start of the next hay season! Programs are offered on select models and vary annually.



HERITAGE

Founded in 1948, Vermeer Corporation is family-owned and markets approximately 100 different agricultural and industrial products worldwide. Come visit and tour our manufacturing operation headquartered in America's heartland, Pella, Iowa.



PARTS

When it's time to make hay, it's time to make hay. That's why we operate on the premise that parts and service support doesn't help tomorrow when you're in the field today. And we support it with one of the most sophisticated and responsive parts centers in the industry.



SERVICE

Expect top service from our independent authorized dealers backed by factory product support service teams. Our mission is to provide you with a level of experience and expertise that goes far beyond product knowledge, sales training and financing programs.



FINANCING

Through Vermeer Credit Corporation you and your dealer can determine a payment structure that fits your budget, schedule and needs. For more information on financing options or retail incentives, visit Vermeer.com or contact your local dealer.

2018 BALE WRAPPERS

Vermeer Corporation
1410 Vermeer Road East • Pella, Iowa 50219
800-370-3659 • Vermeer.com

Vermeer Corporation reserves the right to make changes in engineering, design and specifications; add improvements; or discontinue manufacturing at any time without notice or obligation.

Equipment shown is for illustrative purposes only and may display optional accessories or components. Please contact your local Vermeer Dealer for more information on machine specifications.

Specifications, descriptions and illustrative material herein are as accurate as known at time of publication, but are subject to change without notice. Availability of some models and equipment builds varies according to the country in which the equipment is used.

Vermeer, Vermeer logo and Equipped to Do More are trademarks of Vermeer Manufacturing Company in the U.S. and/or other countries.

© 2017 Vermeer Corporation. All Rights Reserved.



**EQUIPPED TO
DO MORE.®**