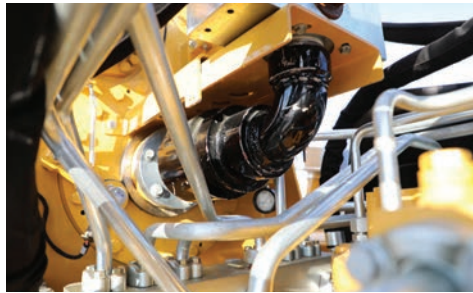


D220x500 S3 NAVIGATOR[®]

HORIZONTAL DIRECTIONAL DRILL



POWERFUL TORQUE. Operators can adjust the drill from 30,000 ft-lb to 52,600 ft-lb (40,675 Nm to 71,316.1 Nm) of rotary torque, with max torque being highly advantageous when turning large-diameter reamers and hole openers for installing large-diameter product.



MUD FLOW. The enhanced water course system features four 1.5-in (3.8-cm) mudlines and a 3-in (7.6-cm) head shaft, allowing high volumes of fluid to be pumped downhole.



DRILL ROD ADVANTAGES. Outfitting the drill with a 30-ft (9.1-m) rack gives crews the ability to use a variety of range 2 drill pipe, helping decrease the number of tool joint connections – the optimal setup for performing pipeline work.



CHOOSE YOUR DRILLING EXPERIENCE. Choose an excavator-style cab (cab on) for fast, compact setup and view of open-top vises, the rack and the rod loader. A stand-alone operator's station helps provide optimal operator comfort and room for the steering hand. Both the cab and operator's station include the same dual multifunction joystick controls found on all Vermeer S3 horizontal directional drills.



CATWALK AND ROD STAGER OPTIONS. The full-length catwalk provides access to the entire length of the rack for ease of wire lining and assisting in the rod loading process. The rod stager option helps improve overall efficiency by staging rods in advance and cycling rods with a touch of a button.



CARRIAGE SPEED. The high carriage speed aids in fast rod cycle time when adding or removing drill rods and helps cut down on cycle time when tripping out of the borehole.

D220x500 S3 NAVIGATOR® HORIZONTAL DIRECTIONAL DRILL

GENERAL DIMENSIONS AND WEIGHTS

Min transport length: 50.8 ft (15.5 m)

Min transport width: 100 in (254 cm)

Min transport height: 11.5 ft (3.5 m)

Max weight: 88,700 lbs (40,234 kg)

ENGINE

Make/Model: Caterpillar C13 ACERT Tier 4 Final (EU Stage V)

Fuel type: Ultra-low sulfur diesel

Maximum engine RPM: 2,100 RPM

Idle speed: 800 RPM

Rated RPM: 2,000 RPM

Gross horsepower: 415 hp (310 kW)

Cooling method: Liquid

Aspiration: Turbocharged

Max fuel consumption: 21.3 gph

Emissions rating: Tier 4 Final (EU Stage V)

Maximum operating angle: 30°

OPERATIONAL

Thrust/pullback: 240,400 lb (1,069.4 kN)

Maximum carriage speed in high at maximum engine RPM:
147 fpm (44.8 m/min)

Maximum carriage speed in low at maximum engine RPM:
42 fpm (12.8 m/min)

Maximum spindle torque low: 52,600 ft-lb (71,316.1 Nm)

Maximum spindle speed high at max engine RPM: 97 rpm

Maximum ground drive speed at maximum engine RPM
(forward and reverse): 1.9 mph (3.1 kmh)

Noise level at operator's ear (on-board cab): 81.2 dB(A) to 85 dB(A)

Minimum bore diameter: 6.1 in (15.4 cm)

Drill rack angle: 8.5° - 16° (14.9% - 28.7%)

FLUID CAPACITIES

Fuel tank: 128 gal (483.9 L)

DRILLING FLUID SYSTEM

Maximum flow: 350 gpm (1,323 lpm)

Maximum pressure: 1,200 psi (82.7 bar)

Make: Weatherford

CRANE

Maximum lifting capacity: 4,740 lb (2,150 kg)

Maximum lifting capacity at max reach: 2,530 lb (1,148 kg)

Rotation: 360°

Maximum reach: 26.3 ft (8 m)

Wireless remote: Yes

FEATURES

Breakout system: Semi-open top vise

Drilling lights: Yes

Flow indicator: Yes

Stakedown system: Yes

Cab: Yes

Strike alert: Yes

Remote lockout: Yes

NOTES:

Vermeer Corporation reserves the right to make changes in engineering, design and specifications; add improvements; or discontinue manufacturing at any time without notice or obligation. Equipment shown is for illustrative purposes only and may display optional accessories or components specific to their global region. Please contact your local Vermeer dealer for more information on machine specifications.

Vermeer, the Vermeer logo and Navigator are trademarks of Vermeer Manufacturing Company in the U.S. and/or other countries. Caterpillar and ACERT are trademarks of Caterpillar Inc. Weatherford is a trademark of Weatherford Technology Holdings, LLC. © 2022 Vermeer Corporation. All Rights Reserved.



EQUIPPED TO
DO MORE.