

# ST2000 SLAT TANK



**DRIVE-OVER TANK.** Provides convenient and efficient unloading to help eliminate the need to back up to a pit.



**SWING-OPEN HATCH.** Open access to tank ensures fast and reliable unloading while minimizing splatter for a tidy jobsite.



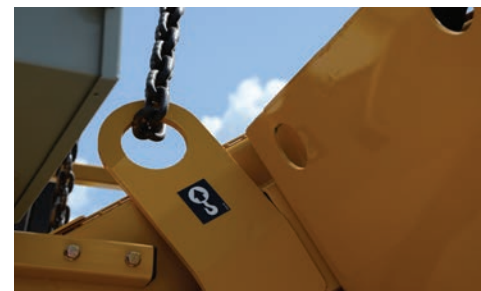
**SELF-CLEANING TANK.** Slats wipe the 2000 gal (7570.8 L) bottom clean as they move material.



**USER-FRIENDLY OPERATION.** Slip-resistant floors and access doors aid in tank washout.



**GENEROUS DISCHARGE CLEARANCE.** 84" (213.4 cm) discharge height allows for multiple loading options.



**CONVENIENT MOBILIZATION.** Machine requires minimal setup; and lift points make transport efficient.

# ST2000 SLAT TANK

## GENERAL

Weight: 16,000 lb (7257.5 kg)

Length: 30.5' (9.3 m)

Width: 7.5' (2.3 m)

Transport height: 9.5' (2.9 m)

Discharge height: 84" (213.4 cm)

Drive-over height: 37" (94 cm)

Drive-over weight limit: 35,000 lb (15,875.7 kg) per axle

Mud tank capacity: 2000 gal (7570.8 L)

Throughput capacity: 75 gpm (283.9 L/min) for clear water

Hydraulic tank capacity: 12.3 gal (46.6 L)

Motor capacity (60 Hz): 15 hp (11.2 kW) @ 1800 rpm

## GENERATOR REQUIREMENTS

Rating: 40 kW (50 kVA) standby

Voltage: 480 V, 3-phase

Amperage: 50 amp, 100% rated breaker

Power Factor: 0.8

## FEATURES

Variable speed conveyor

Right- or left-hand operation configurable

Working lights

Design allows for powering the unit off the grid or a portable generator

Unit can be buried so the drive-over deck sits at ground level

Multiple control station locations for jobsite flexibility

## NOTES:

---

---

---

---

---

---

---

---

---

---

---

---

---

---

---

---

---

---

---

---

---

---

---

---

The FL-243 is a product designed and produced by Surface to Surface Inc., and is exclusively available from Vermeer dealers. The ST2000 is a product designed and produced by Vermeer Corporation, and is exclusively available from Vermeer dealers. Changes in product engineering, design and specifications; improvements; or manufacturing and distribution may be made at any time without notice or obligation. Equipment shown is for illustrative purposes only and may display optional or global-region specific features, accessories or components. Please contact your local Vermeer dealer for more information on machine specifications. Vermeer and the Vermeer logo are trademarks of Vermeer Manufacturing Company in the U.S. and/or other countries. © 2018 Vermeer Corporation. All Rights Reserved.

