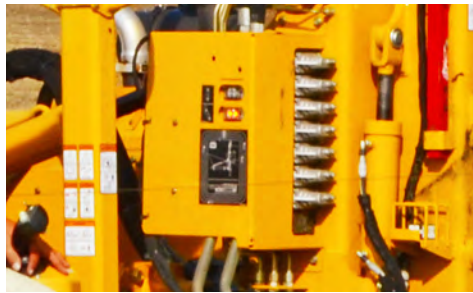


PD10 PILE DRIVER



IMPROVE YOUR ACCURACY. An optional laser receiver integrated into the control system and a GPS-ready design (capable of accepting a number of different systems) can help improve productivity.



REDUCE YOUR CYCLE TIME. Using the auto plumb feature, the PD10 can correct pile angle to be completely vertical without any manual adjustment by the operator. Featuring a hammer which has 80% more impact energy than the original version offered, cycle times have been reduced.



EFFICIENT GROUND DRIVE. Move from pile to pile quickly and accurately with an efficient ground drive, reducing cycle time.



TAKE CONTROL. Conveniently placed dual joystick controls allow the operator to control machine functions including engagement of the hammer, pile placement and ground drive.



LEAVE IT LIKE YOU FOUND IT. The PD10 features a wide track pad to minimize jobsite disturbance in widely varying ground conditions.



AT YOUR FINGERTIPS. An industry-unique integrated control system offers the operator a variety of machine information, including pile angle and height. Display also shows machine maintenance information to help maintain service schedules.

PD10 PILE DRIVER

GENERAL WEIGHTS AND DIMENSIONS

10' (3 M) MAST

Max operating height: 14.9' (4.5 m)

Operating length: 10.2' (3.1 m)

Operating width: 10.1' (3.1 m)

Operating weight: 14,135 lb (6411.5 kg)

Transport height: 108" (274.3 cm)

Transport length: 122" (309.9 cm)

Transport width: 99" (251.5 cm)

GENERAL WEIGHTS AND DIMENSIONS

15' (4.6 M) MAST

Operating height: 19.9' (6.1 m)

Operating length: 10.2' (3.1 m)

Operating width: 10.1' (3.1 m)

Operating weight: 14,320 lb (6495.4 kg)

Transport height: 108" (274.3 cm)

Transport length: 122" (309.9 cm)

Transport width: 99" (251.5 cm)

GENERAL WEIGHTS AND DIMENSIONS

20' (6.1 M) MAST

Operating height: 24.9' (7.6 m)

Operating length: 10.2' (3.1 m)

Operating width: 10.1' (3.1 m)

Operating weight: 15,840 lb (7184.9 kg)

Transport height: 108" (274.3 cm)

Transport length: 122" (309.9 cm)

Transport width: 101" (256.5 cm)

OPERATOR'S STATION

Rollover protective structure (ROPS) rating: 16,300 lb (7393.6 kg)

Seat: Rotating

Controls: Dual joysticks

ENGINE OPTION ONE

Make and model: Deutz D2.9 L4

Gross horsepower: 49 hp (36.5 kW)

Number of cylinders: 4

Cooling medium: Liquid

Fuel type: Diesel

Emissions rating: Tier 4 Final (EU Stage IIIA)

ENGINE OPTION TWO

Make and model: Deutz D2.9 L4

Gross horsepower: 49 hp (36.5 kW)

Number of cylinders: 4

Cooling medium: Liquid

Fuel type: Diesel

Emissions rating: Tier 4i (EU Stage IIIA)

FLUID CAPACITIES

Fuel tank: 18 gal (68.1 L)

Engine crankcase with filter: 2.1 gal (8 L)

Hydraulic tank: 36 gal (136.3 L)

Engine cooling system: 1.5 gal (5.7 L)

GROUND DRIVE

Hydraulic pump type: Danfoss H1 hydrostatic

Max ground drive speed (high): 1.7 mph (2.7 km/h)

Track drive: Steel track with rubber pads

HAMMER

Max angle (direction of tracks): 11 deg (each direction from vertical)

Max angle (perpendicular to tracks): 20 deg away from machine | 55 deg toward machine (from vertical)

Impact drive type: High-frequency hammer

Max hammer impact: 1500 bpm

Max pile dimension (round opening): 9.3 in² (23.6 cm²)

Max pile dimension (square opening): 8.3 in² (21.1 cm²)

Max pile dimension (rectangle opening): 6.7x9.3" (17x23.6 cm)

FEATURES

Auto plumb: Standard

Laser receiver: Optional

Max laser operating distance: 1500' (457.2 m)

Remote Control: Optional

Vermeer Productivity Tools capable

Third party GPS integration available

Vermeer Corporation reserves the right to make changes in engineering, design and specifications; add improvements; or discontinue manufacturing at any time without notice or obligation. Equipment shown is for illustrative purposes only and may display optional accessories or components. Please contact your local Vermeer dealer for more information on machine specifications. Vermeer, the Vermeer logo and Equipped to Do More are trademarks of Vermeer Manufacturing Company in the U.S. and/or other countries. © 2017 Vermeer Corporation. All Rights Reserved. Printed in the U.S.A. Please recycle.



EQUIPPED TO
DO MORE.