

# LEON

## **MODEL GZ625 PULL SCRAPER**



### **LEON'S MFG. COMPANY INC.**

***P.O Box 5002    135 York Road East    Yorkton, Saskatchewan    S3N3Z4    Canada***

***Toll Free: 1-800-667-1581    Phone: 1-306-786-2600    Fax: 306-782-1884***

***Email: [sales@leonsmfg.com](mailto:sales@leonsmfg.com)***

***Website: [www.leonsmfg.com](http://www.leonsmfg.com)***



**Leon's Mfg. Company Inc.**  
"Home of Quality Leon & Ramrod Products"

---

OCTOBER – 2015

**SALES / SERVICE BULLETIN**

**IMPORTANT**

The GZ 625 *Blade Scraper* Operator Manual provides the recommended operation and service instructions for your Leon Blade Scraper. Please follow all recommendations and warnings as detailed in the manual and in this bulletin.

The GZ 625 Blade Scrapers are recommending for use with tractors having a rated drawbar of 400HP to 600 HP.

THE SCRAPER MUST NOT OPERATE WITH ANY TRACTOR THAT EXCEEDS A DRAWBAR RATING OF 600+ HP.

WARRANTY FOR THE SCRAPER WILL BE VOID IF A LARGER TRACTOR THAN RECOMMENDED IS USED WITH THE BLADE SCRAPER.

Your implement has been designed to give you years of satisfactory service. Safe, successful operation and long life depend on the proper precautions and the proper care given to your implement. Please read the operator manual carefully and follow the instructions provided to ensure long life of your implement. Correct operation and maintenance will save you time and expense.

For additional information, contact the Sales/Service Department at Leon's Mfg.

**Leon's Mfg. Company Inc.**  
**PO Box 5002, 135 York Road East, Yorkton, SK S3N 3Z4 Canada**  
**Ph: 306.786.2600 Fx: 306.782.1884**  
**[www.leonsmfg.com](http://www.leonsmfg.com) [www.ramrodequip.com](http://www.ramrodequip.com) [www.lratattachments.com](http://www.lratattachments.com)**

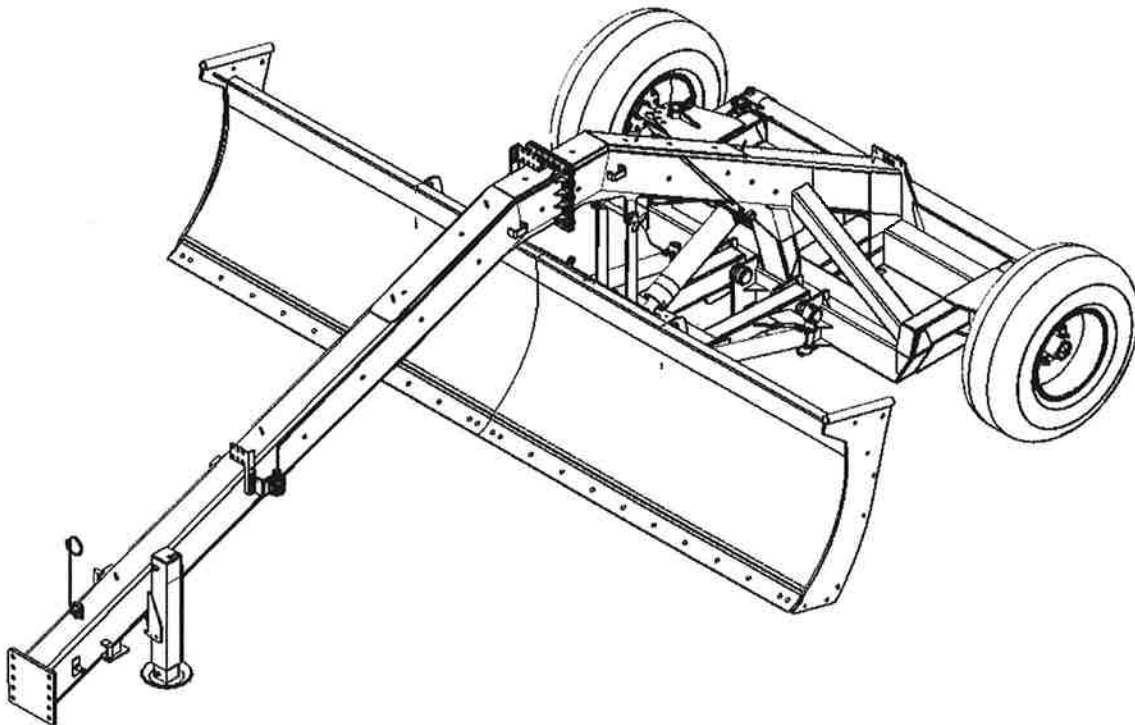
# Introduction

This manual provides recommended operation and service instructions for your LEON GZ 625 Land Scraper.

The GZ 625 Land Scraper rated for use with tractors having a minimum drawbar of 400 HP and maximum of 600++ HP.

Your implement is been designed to give you years of satisfactory service. Safe, successful operation and long life depend on the proper precautions and the proper care given to your implement. Please read this manual carefully and follow the instructions provided to ensure long life of your implement. Correct operation and maintenance will save you time and expense. For additional information, see your dealer.

With proper operation, your implement will give maximum performance, low maintenance and long life. Please read the warranty page carefully, fill-in the required information and return warranty card so your dealer can give your prompt, efficient service when you order parts.



# Operation Instructions

The LEON land Scraper, upon delivery, had Gulf Duratran hydraulic oil in all cylinders. It is our understanding that such oil is compatible with all factory recommended gear and hydraulic oil. Before operating, the Land Scraper should be greased at all grease fitting points. After connecting the hydraulic hoses to the tractor, retract the lift cylinders and remove the transport lock pins. Take care to keep dirt out of the oil when connecting or disconnecting any oil line, as dirt contributes to the failure of hydraulic components.

## BEFORE OPERATING THE SCRAPER

### ***REMOVE THE TRANSPORT LOCK PIN***

- Lubricate all wheel bearings, pins and rollers.
- Check and adjust tire pressure as listed below.
- Check wheel bolt torque as listed below.
- Hitch Land Scraper to tractor and cycle operate the entire unit while empty. Stop tractor and make adjustments as required.
- Cycle all hydraulic functions several times to ensure proper operation of hydraulics. Ensure to raise the Front Gate to fully open before cycling the push gate. When all the cylinders are retracted, check the tractor oil level, adding to maintain normal levels.
- After eight (8) hours of work, all bolts should be checked and tightened if necessary.
- Every eight (8) hours all grease fittings should be lubricated.
- After thirty (30) hours operation, all bolts should be re-checked and tightened if necessary.

## WHEEL BOLT TORQUE      **IMPORTANT**

Tighten all wheel bolts before using the units and check again after the first few loads. Tight the wheel bolts to:

5/8 bolts	180 ft.-lbs.
3/4 bolts	320 ft.-lbs.

## TIRE PRESSURE

Tire Size	PSI
16.5L x 16.1 – 10 Ply Rib Implement	32
21.5L x 16.1 – 10 Ply Rib Implement	38
21.5L x 16.1 – 10 Ply AWT	32
18.4 x 26 – 10 Ply Rib Implement	36
23.1 x 26 – 10 Ply Rib Implement	36

## Operating Tips

### ***REMOVE THE TRANSPORT LOCK PINS***

For efficient Land Scraper operation:

1. Plan work to load scraper downhill
2. Eliminate excess turns,
3. Load scraper in direction of where load is to be dumped,
4. Do not spend unnecessary time in trying for heaping loads – you may sacrifice this gain in cubic yards by a longer time cycle,
5. Do not cut too deep – deep cuts increase the voids and reduce the pay load. Large chunks in the scraper make poor spreading material,
6. Maintain a downslope in cut – do not cut horizontal layers off the top,
7. On side hill cuts, keep inside of cut, deeper than outside,
8. Maintain a smooth hauling road,
9. Do not raise Land Scraper any higher than necessary when hauling - increasing Land Scraper height reduces the scraper's stability,
10. In constructing a fill, keep shoulders high and center low – this provides drainage toward center and prevents the scraper from sliding over the side of the fill.

# Pre-Delivery Inspection

- Check the wheel torque requirements.
- Check and adjust the tire inflation pressure as per requirements on.
- Lubricate all rotating parts with premium quality multi-purpose grease where applicable.
- Ensure that the safety SMV emblem have been installed properly.
- Ensure that all bolts and fasteners are in place and properly tightened.
- Hook up the scraper and perform a test run. Ensure that the area around the scraper is clear of obstacles and other people.
- Cycle the hydraulics and raise and lower the Front Gate ensuring that no interference occurs.
- Cycle the hydraulics and raise and lower the Goose Neck ensuring that no interference occurs.
- Cycle the hydraulics and push the Rea Gate forward and backward ensuring that no interference occurs.

## Maintenance

- Always follow proper safety precautions.
- Never attempt any service, maintenance, adjustment or repair unless you have been properly trained and are qualified to do so.
- Always shut off the tractor, engage the park brake and take steps to ensure no person can start up the machine while you are working on it.
- Check wheel bolts hourly for the first day of operation and every 50 hours of operation thereafter.
- Check tires daily for sign of damage or noticeably low air pressure. Every 50 hours check the tire pressure. Grease walking beam bearings every 8 hours and wheel bearings every 50 hours with premium quality multi-purpose grease.

# Safety

This symbol calls your attention to instructions concerning your personal safety. It is found throughout the manual as well as on the machine to point out specific hazards and ways to avoid them. Always follow the instructions to



minimize the risk of personal injury or death.

## OPERATING

- In addition to equipment configuration and design, hazard control and accident prevention depend on awareness, concern, prudence and proper training of personnel in the operation, maintenance, transport and storage of equipment.
- Always shut off tractor engine, shift to "PARK" position or shift to neutral, set brakes and allow scraper to completely stop before dismounting tractor or working around the machine.
- Remove tractor start key when tractor and scraper will be unattended for adjustments or maintenance.
- Do not attempt to lubricate or adjust scraper while machine is in operation.
- Machinery operation should be performed only by persons who are trained and qualified to do so and are knowledgeable of the scraper.
- Only the operator should be permitted on the tractor (unless the tractor has a factory installed passenger seat) when the tractor and scraper are in motion. Never permit anyone to ride in or on the scraper at any time.
- Avoid wearing loose-fitting clothing or jewelry when working around the scraper and tie up long hair that can entangle in moving parts.
- Wear personal protective equipment (PPE) such as, but not limited to, protection for eyes, lungs, ears, head, hands and feet when operating, servicing or repairing equipment.
- Be sure bystanders are clear before engaging and operating the tractor or scraper.
- Do not leave tractor or scraper unattended with tractor engine running.
- Never attempt to operate the scraper unless sitting in the tractor driver's seat.
- Keep all guards and shields in place when scraper is in operation.
- Do not stand between tractor and scraper to install hitch pin when tractor is running.
- Regulate ground speed to field conditions, and maintain control at all times.
- Be sure tractor has sufficient weight to operate scraper on public roads, on hillsides and under any other adverse conditions.
- Do not allow children to ride on, play on, or operate equipment. Always keep children away from equipment operating, servicing and storage areas.
- Be sure tractor is in safe operating condition and has adequate braking capabilities.
- Tractor should be equipped with rollover protective structure (ROPS), enclosed cab and seat belts. Use seat belts during operation.
- Detach and store scraper where children do not normally play. Always block the wheels and ensure that the hitch jack is stable and secured to scraper properly.

### WARNING:

**DO NOT OPERATE THE SCRAPER WITH A TRACTOR EXCEEDING THE 625 HP DRAWBAR RATING. WARRANTY WILL BE VOID IF THE SCRAPER IS OPERATED WITH THESE TYPE OF TRACTORS.**



# Lubrication and Check Summary

## *1. 8 hours of operation:*

- Grease all grease fittings as indicated by the Decals
- Grease the Hitch pivot
- Check tires

## *2. 50 hours of operation:*

- Check wheel bolts
- Check air pressure
- Grease wheel bearings

## Decals

1	#1174002	DECAL, MADE IN CANADA, 1.0 X 3.0	1
2	#1174004	DECAL, WARNING, 4.0" X 6.0"	1
3	#1174305	DECAL, LEON, 2.5" X 9.375" BLACK	2
4	#1174383	DECAL, LEON, 7.5 X 32.25 BLK	3
5	#1174012	PLATE, SERIAL NUMBER	1
6	#1174069	DECAL-RH SHORT STRIPE	1
7	#1174370	DECAL-LH SHORT STRIPE	1
8	#1174350	DECAL, GREASE 8 HRS BLK ON YLW	14
9	#1178055	DECAL, LIFT POINTS	8
9	#1178886	DECAL, REFLECTIVE RED, 3.0	4
10	#1178887	DECAL, REFLECTIVE AMBER, 3.0	4
11	#1382019	DECAL-TRACTOR MAXIMUM RATING	1
12	#1174380	DECAL, 60"-20'-BLACK	1
13	#1174384	DECAL, GZ625-BLACK	1
14			



# Specifications

## TIRES AND WHEELS

		<b>FRONT</b>
<b>TIRES</b>	STD.	TIRE, 18.4 X 26,10 PLY DIAMOND TRED 329 R-3
<b>RIMS</b>	STD.	RIM, W16L X 26, 10 BOLT (AG CREAM F549) 0 OFFSET; 11.25" BOLT CIRCLE; 8.69" PILOT
<b>HUBS</b>	STD.	HUB, 10 BOLTS

## CYLINDERS

	<b>Lifting Cylinder</b>	<b>Angling Cylinders</b>	<b>Tilting Cylinder</b>	<b>Steering Cylinder</b>
<b>Bore Diameter (inch)</b>	6.00	4.50	6.00	3.00
<b>Shaft Diameter (inch)</b>	3.00	2.50	3.00	1.75
<b>Stroke (inch)</b>	20.125	27.188	6.25	12.50
<b>Design Pressure (psi)</b>	3000			
<b>Test Pressure (psi)</b>	3500			

## REGISTRATION (OWNER'S COPY)

LEON'S Mfg. Company Inc. reserves the right to make improvements and reserve the right to change the design, materials and specifications without notice or obligation.

MODEL NO	_____	DATE OF PURCHASE	_____
SERIAL NO	_____	DEALER	_____
TOWN	_____	PROV/STATE	_____
OWNER	_____	PROV/STATE	_____
TOWN	_____	PROV/STATE	_____

What make and model of tractor will this product be used with? \_\_\_\_\_

Will this product be used:

	Commercially?	_____
	Privately?	_____

Why did you buy LEON? Advertising \_\_\_\_\_  
Previous Owner \_\_\_\_\_  
Recommendation \_\_\_\_\_  
Special Features \_\_\_\_\_

Comments:

8



# WARRANTY

## REGISTRATION (MANUFACTURER'S COPY)

LEON'S MFG. COMPANY INC. warrants all products manufactured by LEON'S Mfg. Company Inc. for a period of one year from the date of purchase for private use, or a period of 90 days for commercial use.

LEON'S Mfg. Company Inc. warrants tires for a period of 60 days for private use or a period of 30 days for commercial use.

This warranty provides that the equipment shall be free of defective materials and workmanship, or we will replace or repair at our factory any part that our inspection shows to be defective.

If any product or portion thereof is modified, changed or tampered with in any way, this warranty shall be deemed null and void.

All hydraulic cylinders, valves, hoses, tires, spindles and other purchased products, except as specifically included in the warranty above, are not manufactured by LEON'S and are, therefore, covered by the warranties of the manufacturer of these products.

All parts shipped to the factory shall be shipped prepaid and will be returned F.O.B. Factory. Leon's Mfg. Company Inc. does not assume responsibility for shipping, labour or travel expenses.

Although LEON'S products are designed to minimize tractor strain, LEON'S Mfg. Company Inc. will assume no responsibility for damage to tractors or other equipment.

LEON'S Mfg. Company Inc. reserves the right to make improvements and reserve the right to change the design, materials and specifications without notice or obligation.

MODEL NO _____	DATE OF PURCHASE _____
SERIAL NO _____	DEALER _____
TOWN _____	PROV/STATE _____
OWNER _____	PROV/STATE _____
TOWN _____	PROV/STATE _____

What make and model of tractor will this product be used with? \_\_\_\_\_

Will this product be used:                      Commercially? \_\_\_\_\_  
   Privately?                      \_\_\_\_\_

Why did you buy LEON?                      Advertising                      \_\_\_\_\_  
   Previous Owner                      \_\_\_\_\_  
   Recommendation                      \_\_\_\_\_  
   Special Features                      \_\_\_\_\_

Comments:

NOTE: This Warranty is effective only if the warranty registration is filled in and mailed by the original purchaser within then days after the date of delivery.



# Delivery Checklist

## Pre-Delivery:

- \_\_\_\_\_ Verify Tires Pressure
- \_\_\_\_\_ Verify Wheel Torque
- \_\_\_\_\_ Inspect all Lubrication Points
- \_\_\_\_\_ Inspect all Hydraulic Hoses and Fittings
- \_\_\_\_\_ Inspect all Hydraulic Cylinder Pins
- \_\_\_\_\_ Verify Hydraulic Tighten Torque

DEALER REPRESENTATIVE: \_\_\_\_\_

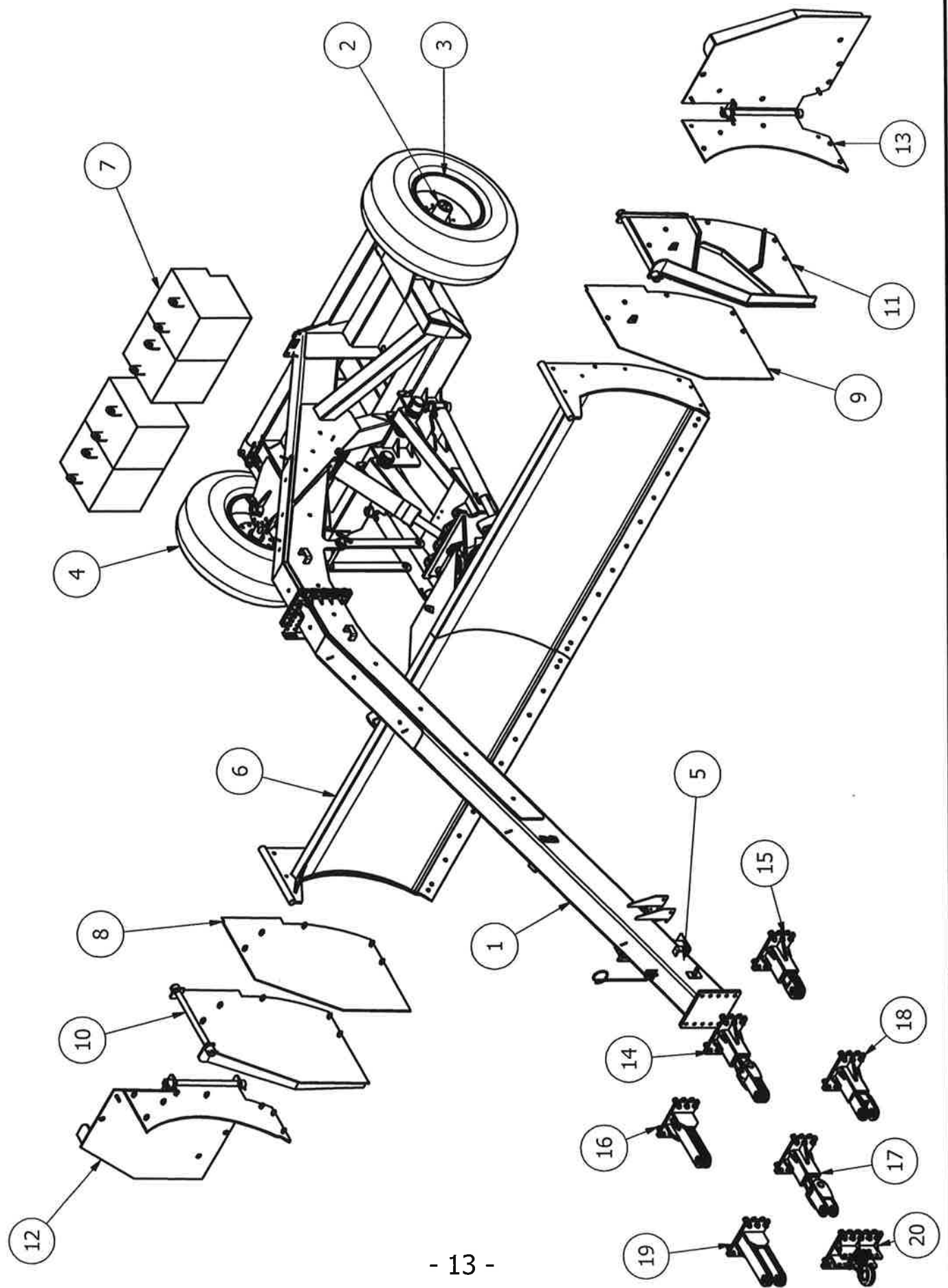
DATE: \_\_\_\_\_

## Customer Delivery :

- \_\_\_\_\_ Review Safety Procedures regarding Bale Handler Operation
- \_\_\_\_\_ Review Operator's and Part's Manual
- \_\_\_\_\_ Review proper Operating Procedure
- \_\_\_\_\_ Review the Assembly Procedure
- \_\_\_\_\_ Review general Adjustment and Setup procedure
- \_\_\_\_\_ Discuss Road and Highway Transportation Requirements and Regulations

DEALER REPRESENTATIVE: \_\_\_\_\_

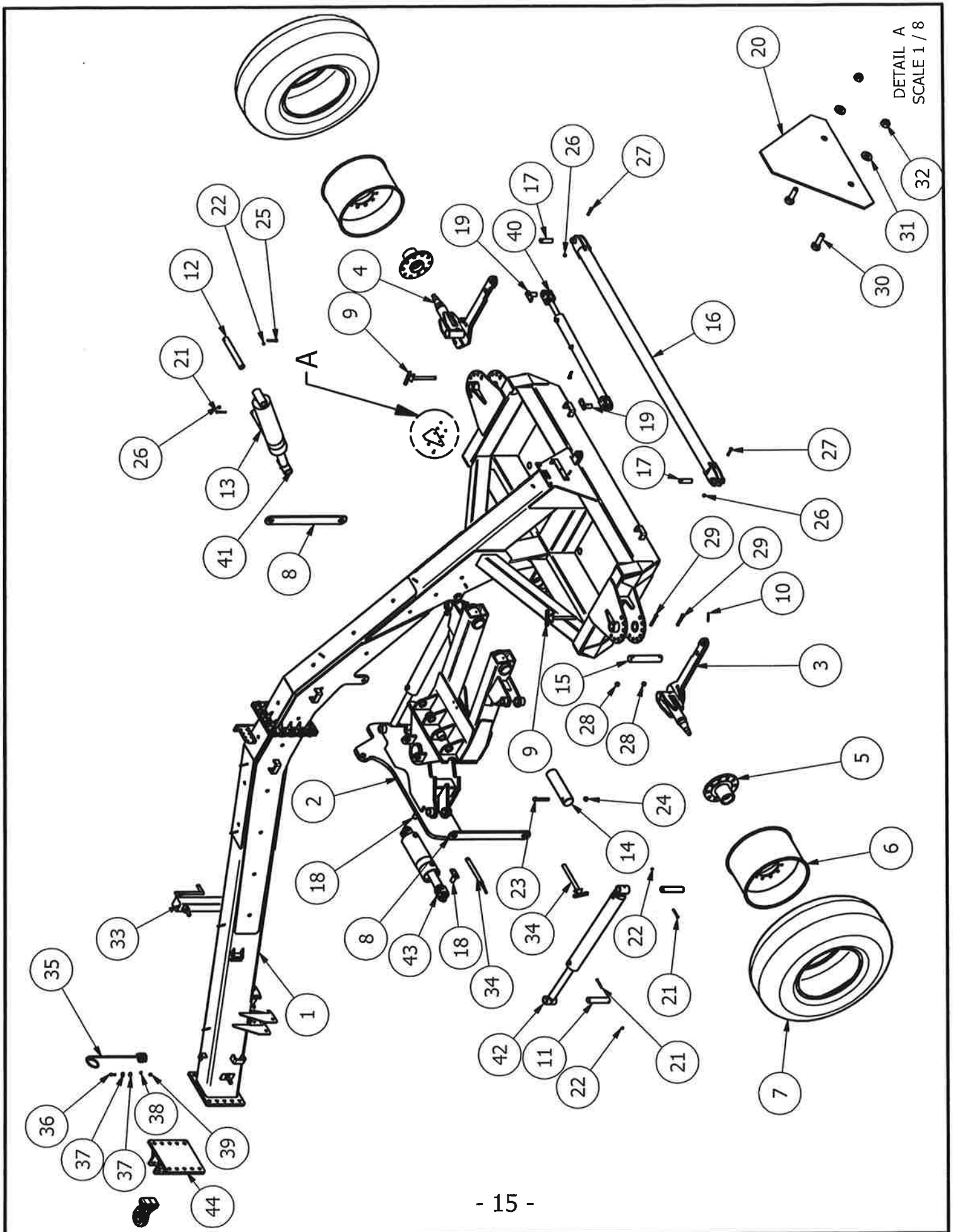
DATE: \_\_\_\_\_





## **GZ-625 LAND SCRAPER, MAIN ASSYMBLEY**

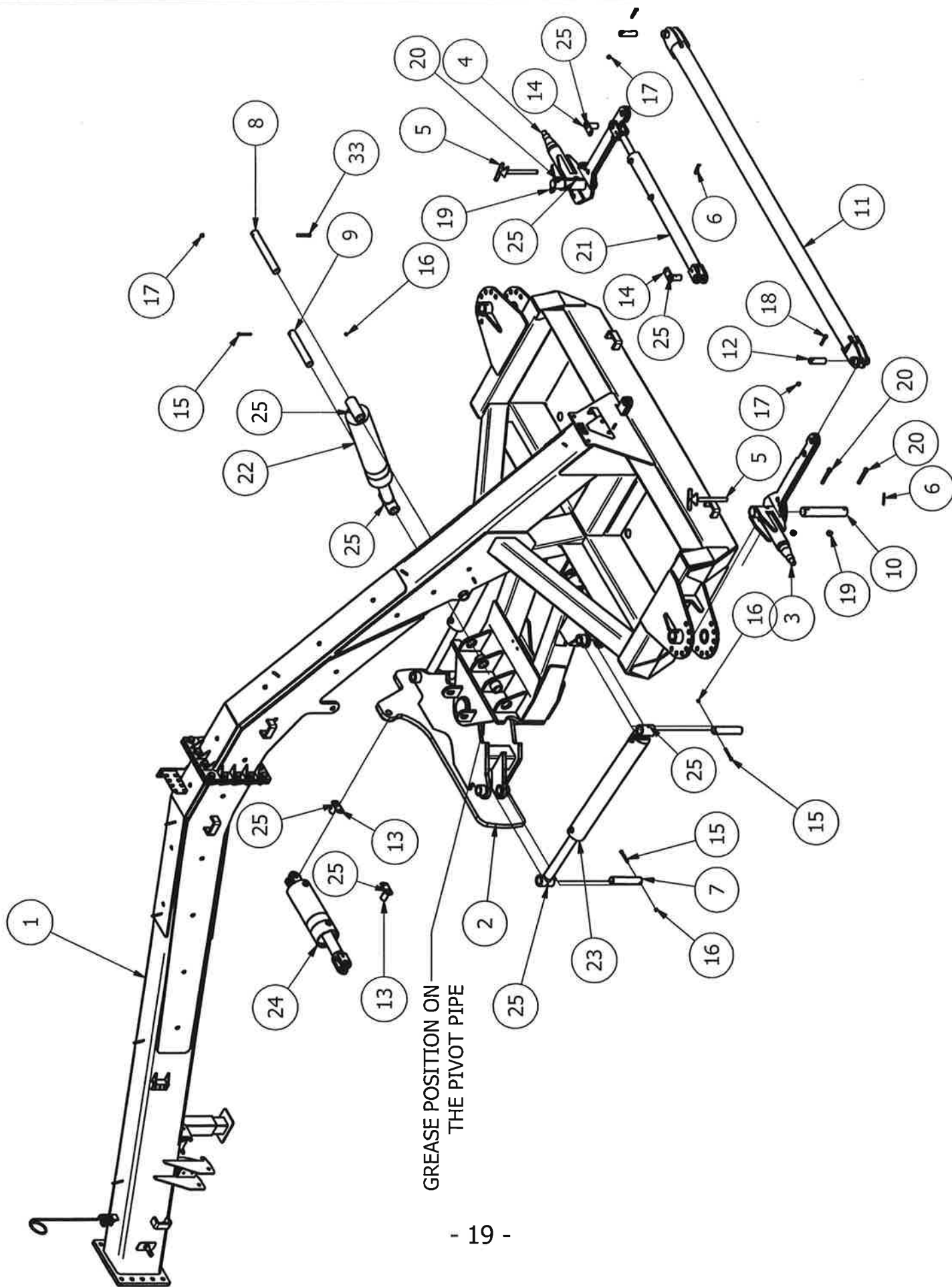
PARTS LIST			
ITEM	QTY	PART NUMBER	DESCRIPTION
1	1	1382001	BASE UNIT-SCRAPER GZ-625
2	2	1135315	HUB, H1010-10 BOLTS
3	2	1135018	RIM, W16 x 26, 10 BOLTS
4	2	1135048	TIRE, 18.4 x 26, 10 PLY
5	1	1850865	JACK-W MOUNT
6	1	1382199	BLADE- 60" X 18 FT.
		1382200	BLADE- 60" X 20 FT.
		1382210	BLADE -60" X 22 FT.
7	4	1381211	WEIGHT, CONCRETE 1000 LB WITH HOOKS
8	1	1382163	BOX END-COMPLETE-RT
9	1	1382164	BOX END-COMPLETE-LT
10	1	1382270	BOX END-COMPLETE-RT
11	1	1382275	BOX END-COMPLETE-LT
12	1	1382276	BOX END SIDE-BLADE 60"-RT
13	1	1382279	BOX END SIDE-BLADE 60"-LT
14	1	1382265	HITCH-SW-TONQUE-PIVOT-CAT V
		1382260	HITCH-SW-TONQUE-PIVOT-CAT IV
15	1	1382235	HITCH-SWIVEL TONQUE-CAT V
		1382230	HITCH-SWIVEL TONQUE-CAT IV
16	1	1382165	HITCH -TONQUE-GZ 625-CAT V
		1382160	HITCH -TONQUE-GZ 625-CAT IV
17	1	1382255	HITCH-SW CELVIS-PIVOT-CAT V
		1382250	HITCH-SW CELVIS-PIVOT-CAT IV
18	1	1382245	HITCH-SWIVEL CLEVIS-CAT V
		1382240	HITCH-SWIVEL CLEVIS-CAT IV
19	1	1382175	HITCH - CLEVIS-GZ 625-CAT V
		1382170	HITCH - CLEVIS-GZ 625-CAT IV
20	1	1382217	HITCH MUNT, COMPLETE,



PARTS LIST			
ITEM	QTY	PART NUMBER	DESCRIPTION
1	1	1382010	MAIN FRAME-SCRAPER GZ-625
2	1	1382020	PUSH FRAME-SCRAPER GZ-625
3	1	1382085	AXLE-GZ 625-LT
4	1	1382080	AXLE-GZ 625-RT
5	2	1135315	HUB, H1010-10 BOLTS
6	2	1135018	RIM, W16 x 26, 10 BOLTS
7	2	1135048	TIRE, 18.4 x 26, 10 PLY
8	2	1382180	LINK-SAFETY LATCH
9	2	1382094	PIN-RETAINER-AXLE
10	2	1102774	HAIRPIN, 0.188 #8 ZINC
11	4	1330590	PIN - 2" X 9 3/4"
12	1	1330591	PIN - 2" X 15.625"
13	1	1330592	PIN - 2" X 12.875
14	2	1382012	PIN - 4" X 16"
15	2	1382079	PIN - 2 1/2" X 14 1/2
16	1	1382090	ARM-AXLE-STEER-GZ 625
17	2	1775055	PIN - 1 1/2 X 5 3/16
18	2	1850685	PIN-TILTING CLINDER KIT-WELDMENT
19	2	1850173	PIN-STEERING CLINDER KIT-WELDMENT
20	1	1178885	SIGN - SLOW MOVING VEHICLE
21	5	1102007	HCS, GR 5, 0.375-16 UNC X 4.0 LG
22	5	1102536	3/8" UNC HEX LK. NUT GR.5 PLATED
23	2	1102159	HCS, GR 5, 0.750-10 UNC X 6.0 LG
24	2	1102551	3/4" UNC HEX LOCKNUT GR.5 PLATED-NYLON
25	1	1102058	1/2" X 4" UNC GR. 5 PLATED HEX BOLT
26	3	1102537	1/2" UNC HEX NYLOCK NUT, GR.5 PLATED
27	2	1102056	1/2" X 3" UNC GR. 5 PLATED HEX BOLT
28	4	1102542	5/8" UNC HEX LOCKNUT GR.5 PLATED
29	4	1102108	5/8" X 5.5" UNC GR. 5 PLATED HEX BOLT
30	2	1101950	5/16" X 1" HEX GR.5, UNC
31	4	1102608	5/16" FLAT WASHER, PLATED
32	2	1102521	5/16 UNC HEX LOCK NUT GR.5 PLATED
33	1	1850865	JACK-W MOUNT
34	2	1382110	PIN-RETAINER-safety latch
35	1	1105556	SPRING - HOSE HOLDER
36	1	1102053	1/2" X 2" UNC GR. 5 PLATED HEX BOLT
37	2	1102611	1/2" FLAT WASHER, PLATED
38	1	1102592	1/2" SPLIT SPRING LOCK WASHER, PLATED
39	1	1102535	1/2" UNC HEX NUT GR.5 PLATED
40	1	1382222	HYD. CYL. 3.00-12.5-1.75
41	1	1382224	HYD.CYL. 6.00-20.13-3.00
42	2	1382226	HYD. CYL. 4.50-27.19-2.500
43	1	1382228	HYD. CYL. 6.00-6.25-3.00
44	1	1382217	HITCH MUNT, COMPLETE,



PARTS LIST			
ITEM	QTY	PART NUMBER	DESCRIPTION
1	1	1382010	MAIN FRAME-SCRAPER GZ-625
2	1	1382020	PUSH FRAME-SCRAPER GZ-625
3	2	1382180	LINK-SAFTEY LATCH
4	2	1850685	PIN-TILTING CYLINDER KIT -WELDMENT
5	2	1382110	PIN-RETAINER-safety latch
6	2	1102775	HAIRPIN - 1/4" X 5 1/4"
7	1	1382200	BLADE-60" X 20 FT, COMPLETE
8	2	1471200	TURNBUCKLE, 1.250, 4 ACME
9	4	1471115	PIN-GROOVE-1"
10	8	1500115	PIN RETAINER CLIP
11	2	1382150	SKID SHOE- 60"-STD/W PLATE
12	2	1102006	3/8" X 3 1/2" UNC GR. 5 PLATED HEX BOLT
13	2	1471188	PIPE-BOLT SPACER
14	1	1382228	HYD. CYL. 6.00-6.25-3.00
15	2	1382157	PLATE-SHIM-TILT-3/4"
16	2	1382158	PLATE-SHIM-TILT-1/2"
17	2	1382159	PLATE-RETAINER-TILT
18	10	1102600	1" SPLIT SPRING LOCK WASHER, PLATED
19	10	1102256	1" X 4 1/2" UNC GR. 5 PLATED HEX BOLT
20	4	1122797	GREASE ZERK, 1/8-27 NPT
21	2	1105696	PIN, LYNCH, 0.4375X1.562 DIA X 1.625
22	2	1102526	3/8" UNC HEX NYLOCK. NUT GR.5 PLATED
23	24	1102541	5/8" UNC HEX NUT GR.8 PLATED, 20FT. BLADE
24	24	1102594	5/8" SPLIT SPRING LOCK WASHER, PLATED, 20FT. BLADE
25	24	1102327	5/8" X 2 1/4" PLOW BOLT DOMED HEAD, 20FT. BLADE
26	2	1162834	CUTTING EDGE - 120", 20FT. BLADE
27	2	1162833	CUTTING EDGE - 108", 18 FT. BLADE
28	2	1162830	CUTTING EDGE - 72", 22 FT. BLADE
29	2	1162829	CUTTING EDGE - 60", 22 FT. BLADE
30	30	1102594	5/8" SPLIT SPRING LOCK WASHER, PLATED, 22FT. BLADE
31	22	1102594	5/8" SPLIT SPRING LOCK WASHER, PLATED, 18FT. BLADE
32	30	1102541	5/8" UNC HEX NUT GR.8 PLATED, 22FT. BLADE
33	22	1102541	5/8" UNC HEX NUT GR.8 PLATED, 18FT. BLADE
34	30	1102327	5/8" X 2 1/4" PLOW BOLT DOMED HEAD, 22FT. BLADE
35	22	1102327	5/8" X 2 1/4" PLOW BOLT DOMED HEAD, 18FT. BLADE



## HYDRAULIC KITS & GREASE POSITIONS

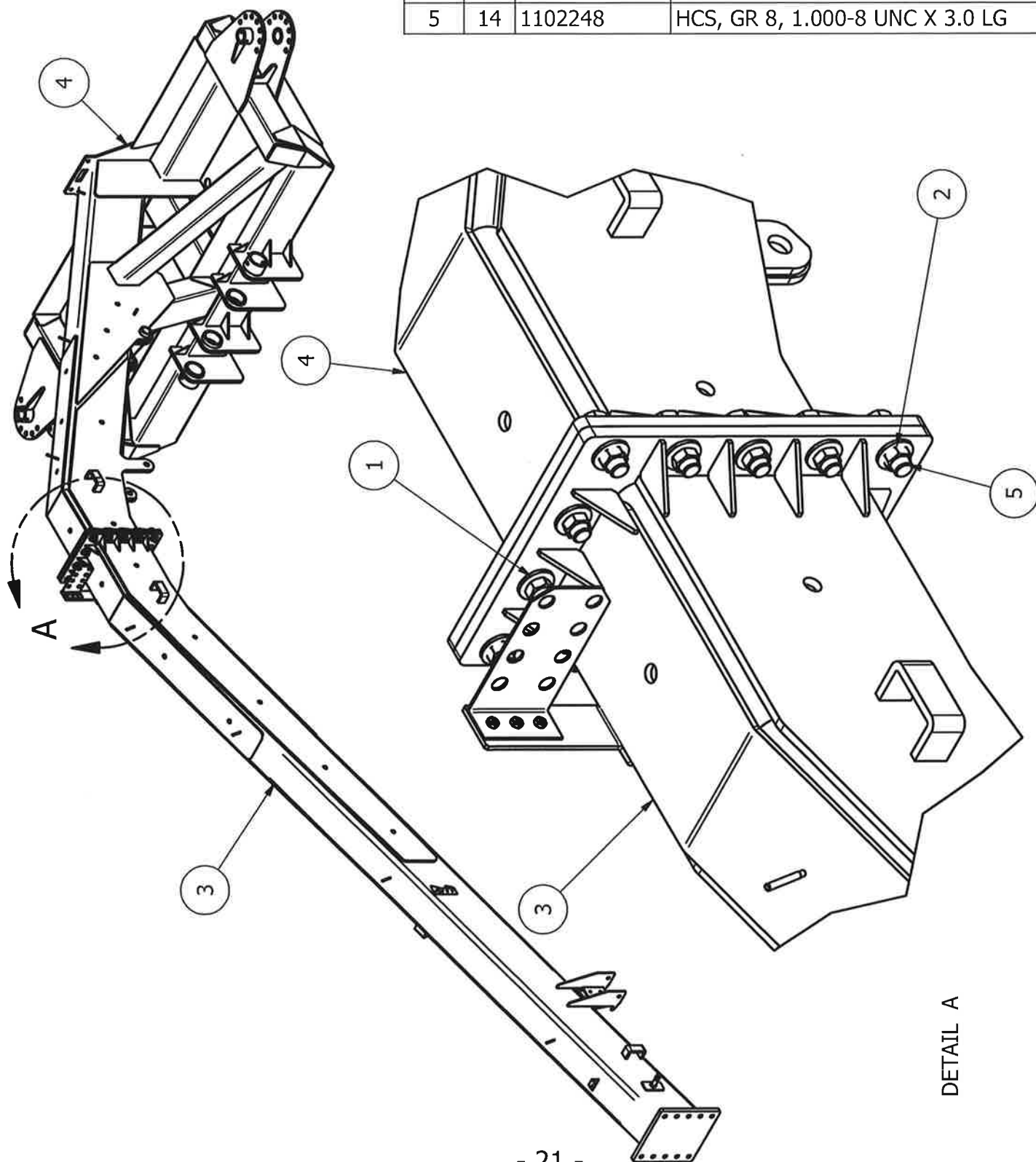
PARTS LIST			
ITEM	QTY	PART NUMBER	DESCRIPTION
1	1	1382010	MAIN FRAME-SCRAPER GZ-625
2	1	1382020	PUSH FRAME-SCRAPER GZ-625
3	1	1382085	AXLE-GZ 625-LT
4	1	1382080	AXLE-GZ 625-RT
5	2	1382094	PIN-RETAINER-AXLE
6	2	1102774	HAIRPIN, 0.188 #8 ZINC
7	4	1330590	PIN - 2" X 9 3/4"
8	1	1330591	PIN - 2" X 15.625"
9	1	1330592	PIN - 2" X 12.875
10	2	1382079	PIN - 2 1/2" X 14 1/2
11	1	1382090	ARM-AXLE-STEER-GZ 625
12	2	1775055	PIN - 1 1/2 X 5 3/16
13	2	1850685	PIN-FRONT GATE-WELDMENT
14	2	1850173	ROLLER PIN
15	5	1102007	HCS, GR 5, 0.375-16 UNC X 4.0 LG
16	5	1102536	3/8" UNC HEX LK. NUT GR.5 PLATED
17	3	1102537	1/2" UNC HEX NYLOCK NUT, GR.5 PLATED
18	2	1102056	1/2" X 3" UNC GR. 5 PLATED HEX BOLT
19	4	1102542	5/8" UNC HEX LOCKNUT GR.5 PLATED
20	4	1102108	5/8" X 5.5" UNC GR. 5 PLATED HEX BOLT
21	1	1382222	HYD. CYL. 3.00-12.5-1.75, STEERING KIT
22	1	1382224	HYD.CYL. 6.00-20.13-3.00, LIFTING KIT
23	2	1382226	HYD. CYL. 4.50-27.19-2.5, ANGLING KIT
24	1	1382228	HYD. CYL. 6.00-6.25-3.00, TILTING KIT
25	13	1122797	GREASE NIPPLE-1/8-27 NPT



# MAIN FRAME ASSEMBLY

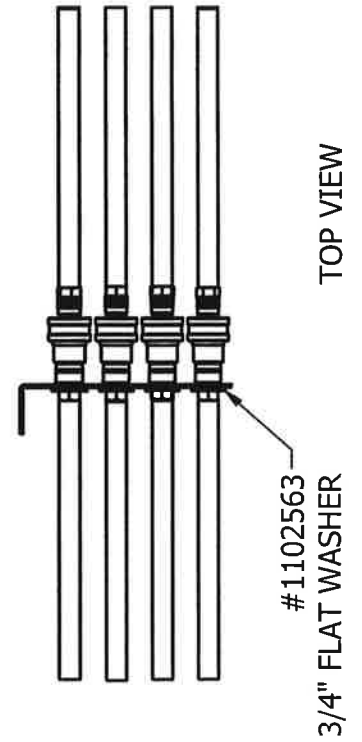
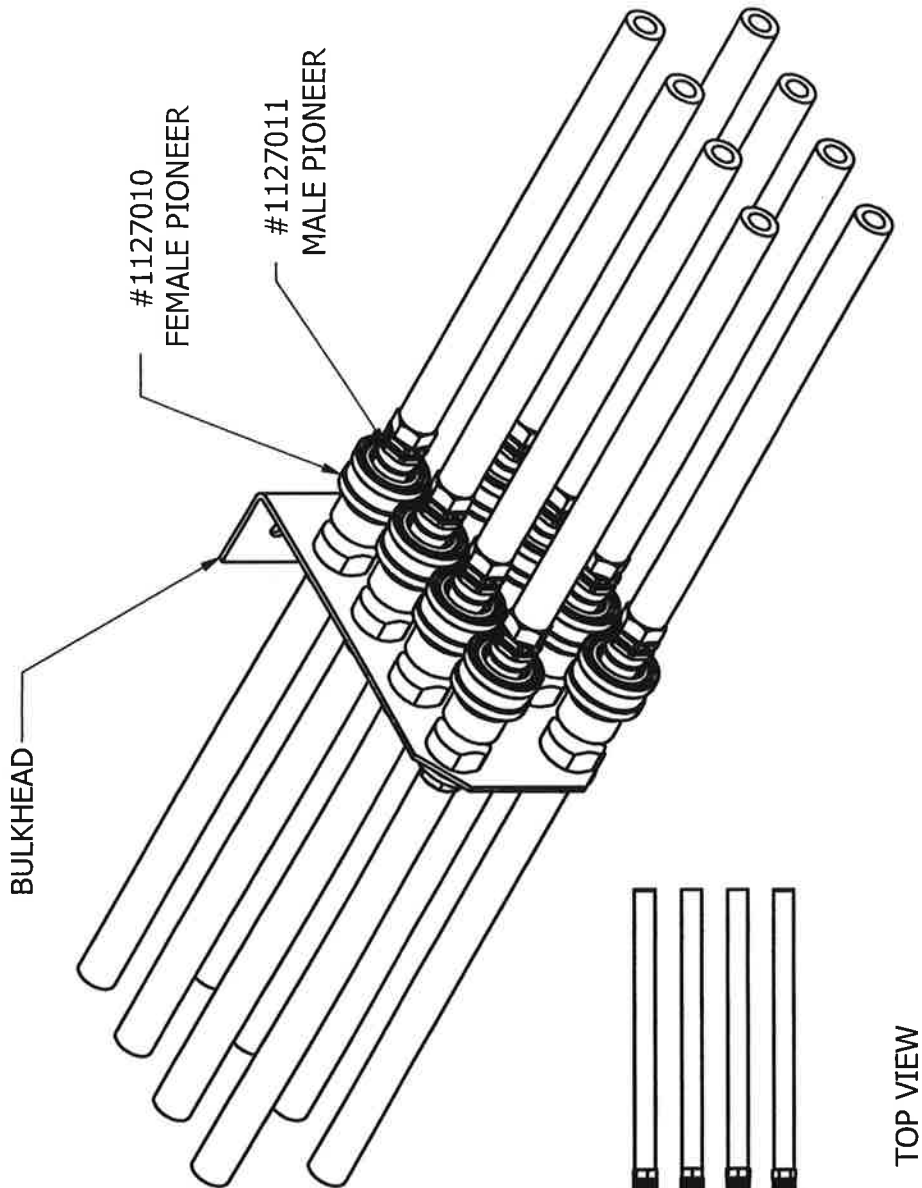
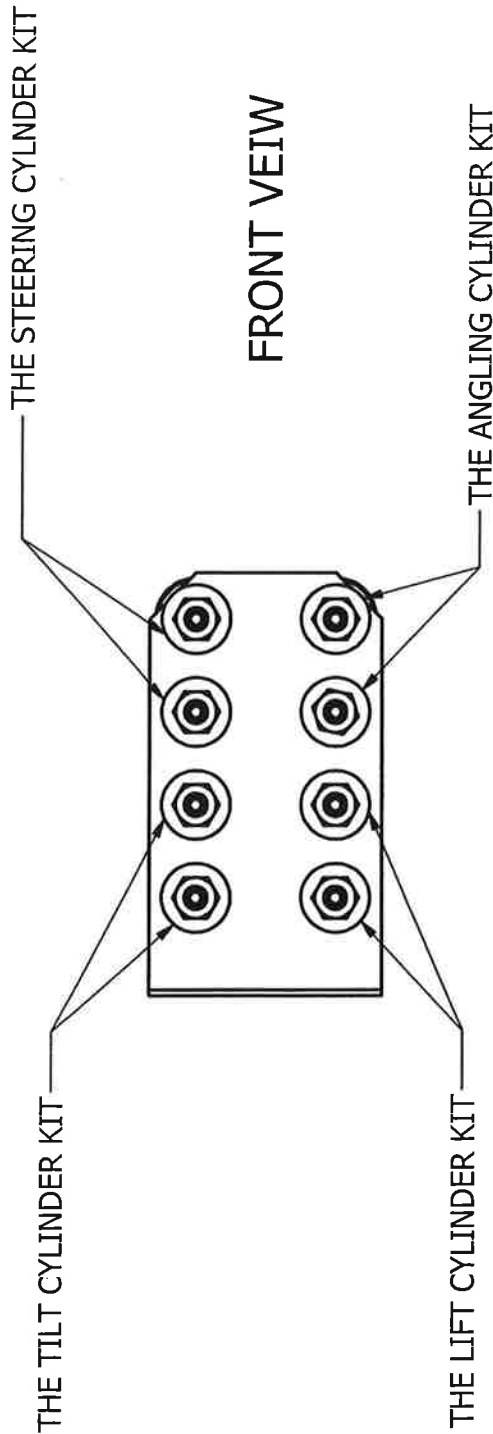
## PARTS LIST

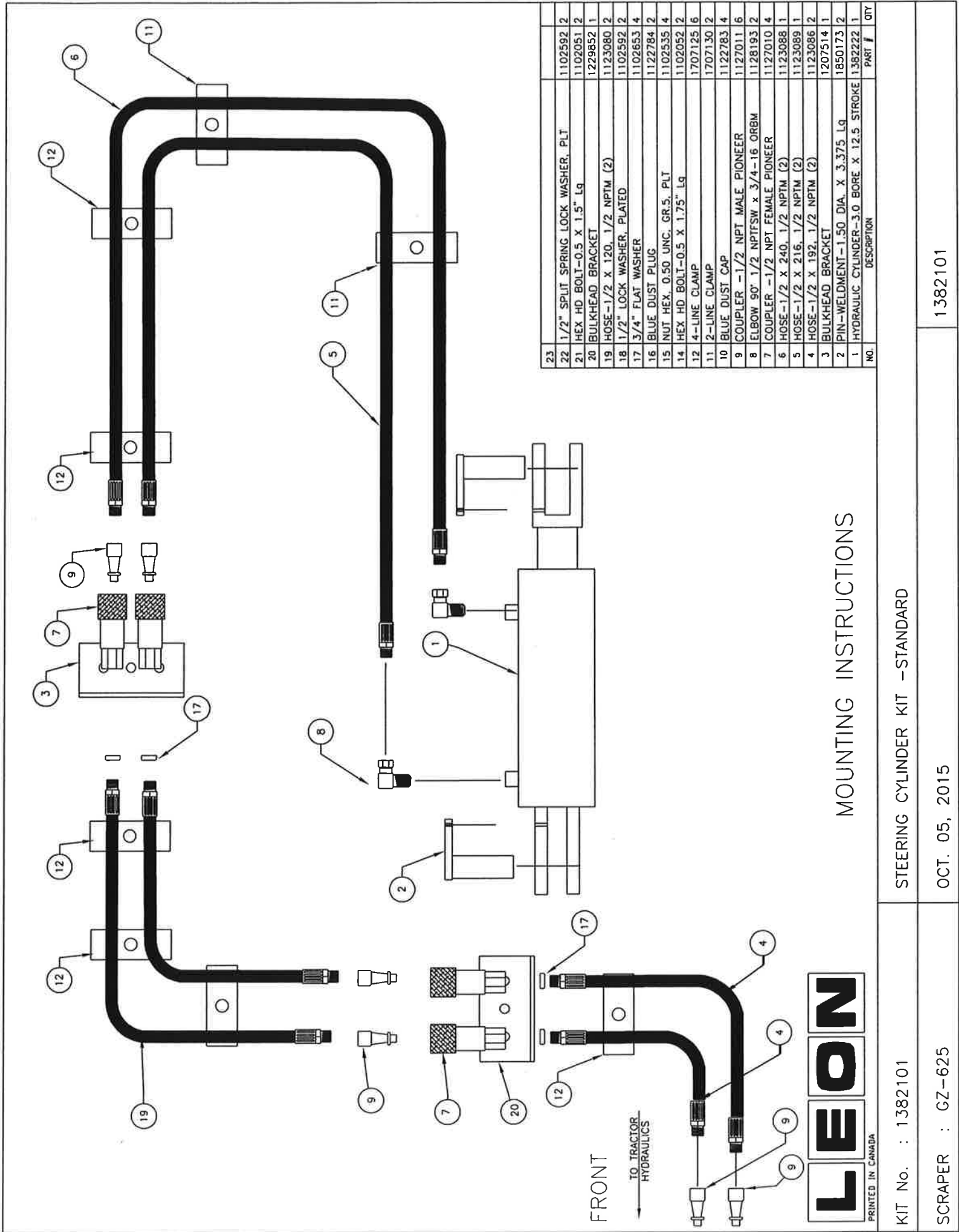
ITEM	QTY	PART NUMBER	DESCRIPTION
1	28	1102659	1" FLAT WASHER, GR.8 PLATED
2	14	1102556	1" UNC HEX LOCKNUT GR.5 PLATED
3	1	1382050	FRONT FRAME- GZ 625
4	1	1382070	REAR FRAME-SCRAPER GZ-625
5	14	1102248	HCS, GR 8, 1.000-8 UNC X 3.0 LG



DETAIL A

# HYDRAULIC HOSES LAYOUT





NO.	DESCRIPTION	PART #	QTY
23			
22	1/2" SPLIT SPRING LOCK WASHER, PLT	1102592	2
21	HEX HD BOLT-0.5 X 1.5" Lg	1102051	2
20	BULKHEAD BRACKET	1229852	1
19	HOSE-1/2 X 120, 1/2 NPTM (2)	1123080	2
18	1/2" LOCK WASHER, PLATED	1102592	2
17	3/4" FLAT WASHER	1102653	4
16	BLUE DUST PLUG	1122784	2
15	NUT HEX, 0.50 UNC, GR.5, PLT	1102535	4
14	HEX HD BOLT-0.5 X 1.75" Lg	1102052	2
12	4-LINE CLAMP	1707125	6
11	2-LINE CLAMP	1707130	2
10	BLUE DUST CAP	1122783	4
9	COUPLER -1/2 NPT MALE PIONEER	1127011	6
8	ELBOW 90° 1/2 NPTFSW X 3/4-16 ORBM	1128193	2
7	COUPLER -1/2 NPT FEMALE PIONEER	1127010	4
6	HOSE-1/2 X 240, 1/2 NPTM (2)	1123088	1
5	HOSE-1/2 X 216, 1/2 NPTM (2)	1123089	1
4	HOSE-1/2 X 192, 1/2 NPTM (2)	1123086	2
3	BULKHEAD BRACKET	1207514	1
2	PIN-WELDMENT-1.50 DIA. X 3.375 Lg	1850173	2
1	HYDRAULIC CYLINDER-3.0 BORE X 12.5 STROKE	1382222	1

# MOUNTING INSTRUCTIONS

STEERING CYLINDER KIT -STANDARD

KIT No. : 1382101

OCT. 05, 2015

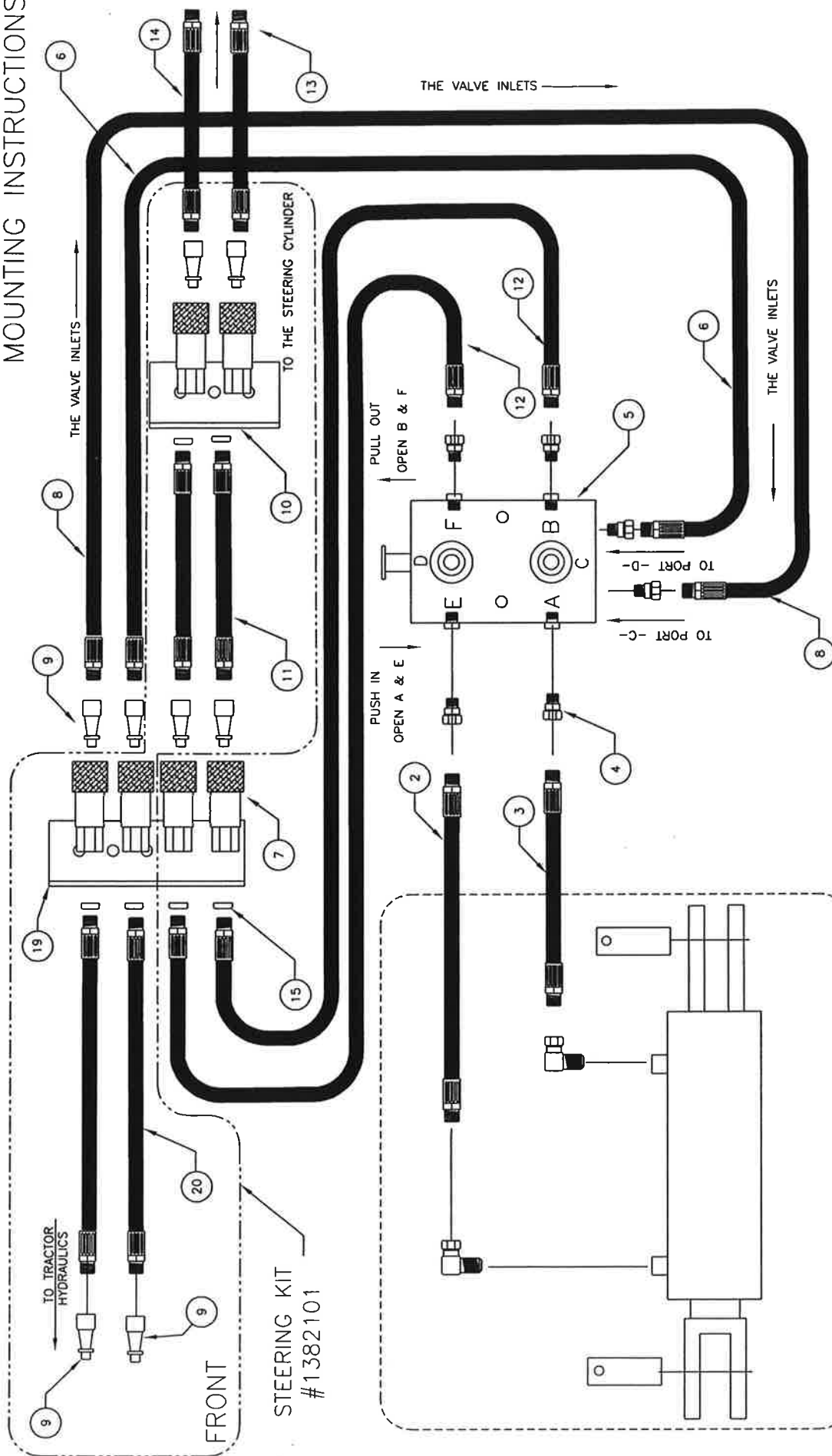
SCRAPER : GZ-625

1382101

**LEON**

PRINTED IN CANADA

## MOUNTING INSTRUCTIONS



20	HOSE, 1/2 X 192, #8 NPTM (2)	1123086	2	10	BRACKET-BULKHEAD - 8-OUTLET	1785247	1
19	BRACKET, BULKHEAD COUPLING	1229852	1	9	COUPLER -1/2 NPT MALE, PIONEER	1127011	2
18	NUT, HEX, 3/8 UNC, GR 5, PLATED	1102525	2	8	HOSE-1/2 X 21, #8 NPTM (2)	1123062	1
17	WSHR, LOCK, 3/8, SPRG SPLT, PLATED	1102580	2	7	COUPLER -1/2 NPT FEMALE, PIONEER	1127010	2
16	HCS, GR 5, 3/8 UNC X 3.0 LG	1102005	2	6	HOSE-1/2 X 16, #8 NPTM (2)	1122336	1
15	WSHR, FLAT, 3/4, F-436 HARD, PLTD	1102653	1	5	VALVE, DOUBLE SELECTOR, DS-1A1E	1382323	1
14	HOSE, 1/2 X 216, #8 NPTM (2)	1123089	1	4	FITTING, STRAIGHT, #8 NPTM X #8 NPTFSW	1122886	6
13	HOSE, 1/2 X 240, #8 NPTM (2)	1123088	1	3	HOSE, 1/2 X 58, #8 NPTM X #8 JICFSW	1125189	1
12	HOSE, 1/2 X 24, #8 NPTM (2)	1123066	2	2	HOSE, 1/2 X 40, #8 NPTM X #8 JICFSW	1125190	1
11	HOSE, 1/2 X 120, #8 NPTM (2)	1123080	2	1	HYDRAULIC JACK -3.0 BORE X 12.5 STROKE	1382055	1
NO.	DESCRIPTION	PART #	QTY	NO.	DESCRIPTION	PART #	QTY

**NOE**

PRINTED IN CANADA

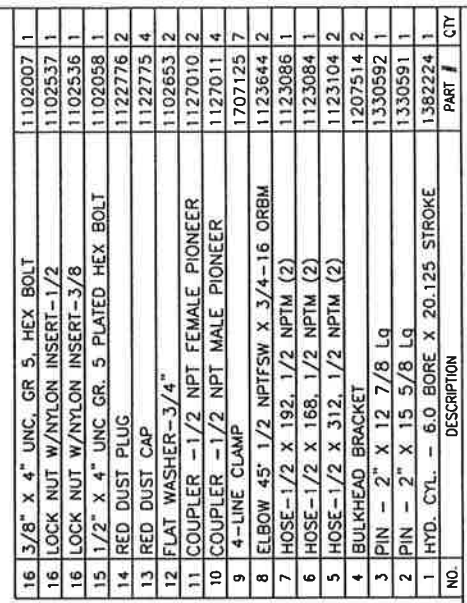
KIT No. : 1382102

HYDRAULIC JACK KIT- SELECTOR VALVE

SCRAPER : GZ-625

OCT. 08, 2015

1382102



**NOEL**

PRINTED IN CANADA

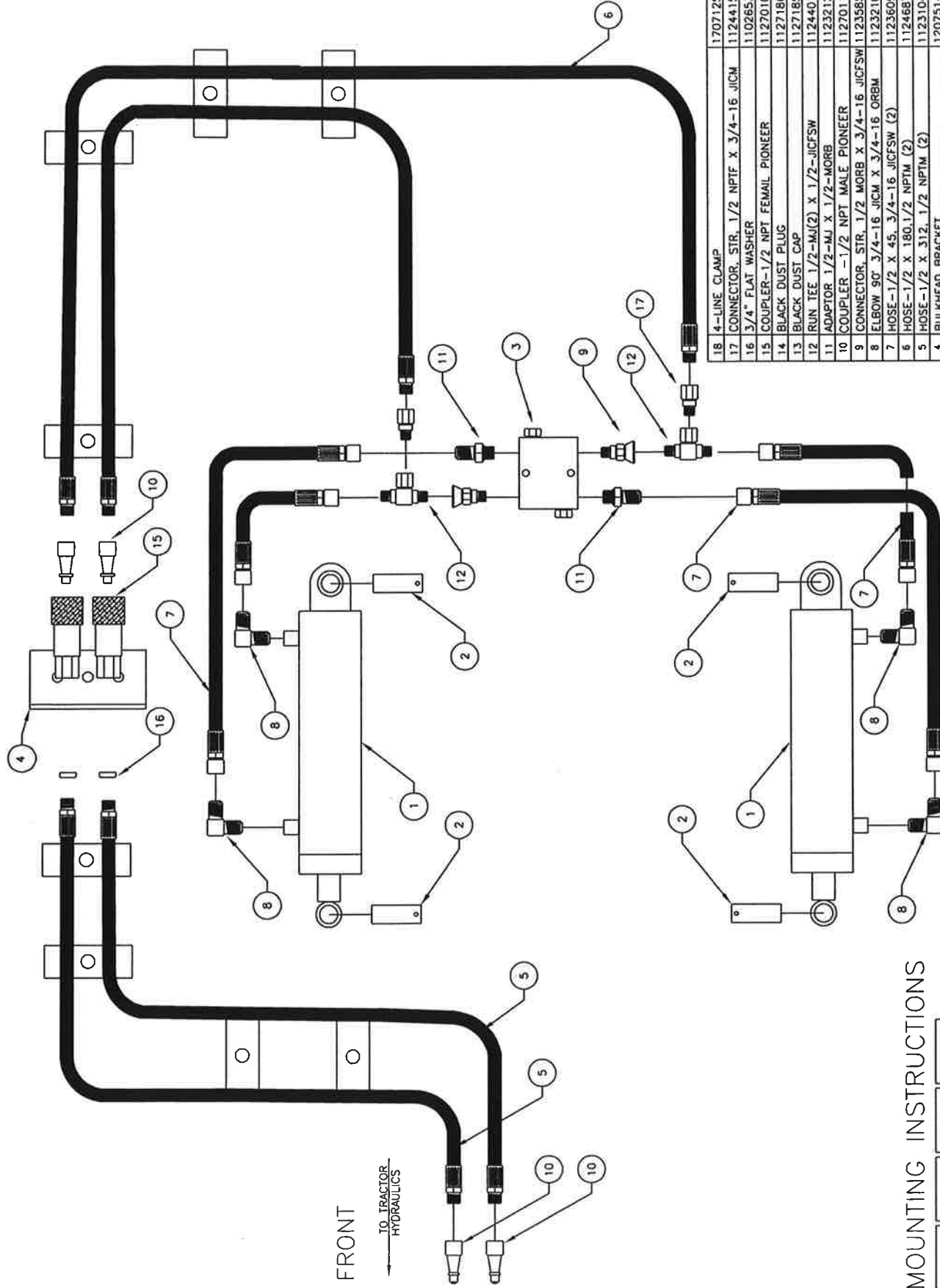
LIFT CYLINDER KIT

OCT. 05, 2015

1382103

FRONT

TO TRACTOR  
HYDRAULICS



NO.	DESCRIPTION	PART	QTY
18	4-LINE CLAMP	1707125	7
17	CONNECTOR, STR, 1/2 NPTF X 3/4-16 JICM	1124415	2
16	3/4" FLAT WASHER	1102853	2
15	COUPLER-1/2 NPT FEMALE PIONEER	1127010	2
14	BLACK DUST PLUG	1127186	2
13	BLACK DUST CAP	1127185	4
12	RUN TEE 1/2-MJ(2) X 1/2-JICFSW	1124401	2
11	ADAPTOR 1/2-MJ X 1/2-MORB	1123212	2
10	COUPLER -1/2 NPT MALE PIONEER	1127011	4
9	CONNECTOR, STR, 1/2 NPT MALE PIONEER	1123585	2
8	ELBOW 90° 3/4-16 JICM X 3/4-16 ORBM	1123210	4
7	HOSE-1/2 X 45, 3/4-16 JICFSW (2)	1123609	4
6	HOSE-1/2 X 180, 1/2 NPTM (2)	1124687	2
5	HOSE-1/2 X 312, 1/2 NPTM (2)	1123104	2
4	BULKHEAD BRACKET	1207514	1
3	CUSHION RELIEF VALVE	1381130	1
2	PIN - 2 X 9 1/2 Lg	1330590	4
1	HYD. CYL-4.50 BORE X 27.188 STROKE	1382226	2

MOUNTING INSTRUCTIONS

**LEON**

PRINTED IN CANADA

KIT No. : 1382104

ANGLE CYLINDER KIT

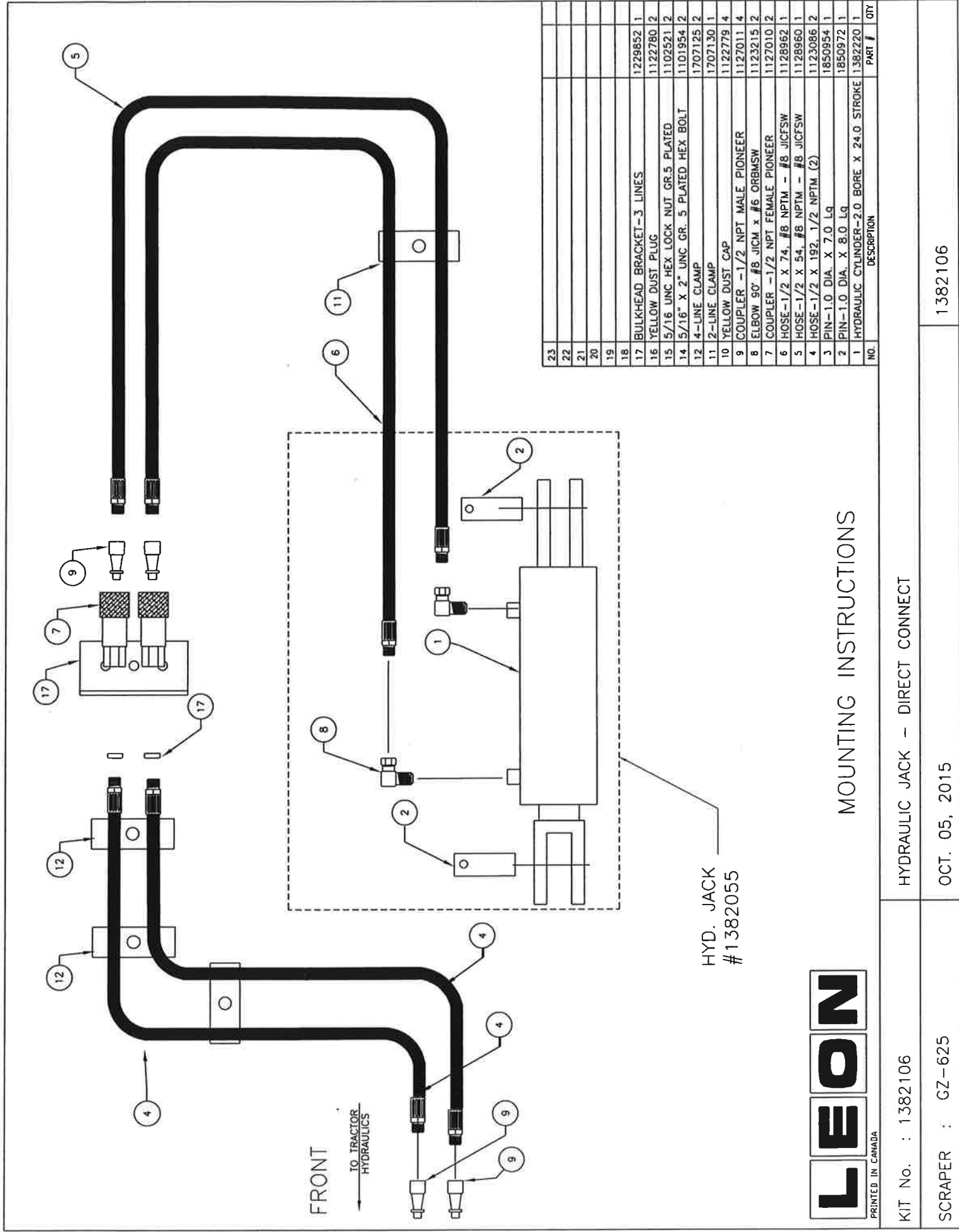
SCRAPER : GZ-625

PCT. 05, 2014

1382104







NO.	DESCRIPTION	PART #	QTY
23			
22			
21			
20			
19			
18			
17	BULKHEAD BRACKET-3 LINES	1229852	1
16	YELLOW DUST PLUG	1122780	2
15	5/16 UNC HEX LOCK NUT GR.5 PLATED	1102521	2
14	5/16" X 2" UNC GR. 5 PLATED HEX BOLT	1101954	2
12	4-LINE CLAMP	1707125	2
11	2-LINE CLAMP	1707130	1
10	YELLOW DUST CAP	1122779	4
9	COUPLER -1/2 NPT MALE PIONEER	1127011	4
8	ELBOW 90° #8 JICM X #6 ORBSW	1123215	2
7	COUPLER -1/2 NPT FEMALE PIONEER	1127010	2
6	HOSE-1/2 X 74' #8 NPTM - #8 JICFSW	1128962	1
5	HOSE-1/2 X 54' #8 NPTM - #8 JICFSW	1128960	1
4	HOSE-1/2 X 192' 1/2 NPTM (2)	1123086	2
3	PIN-1.0 DIA. X 7.0 Lq	1850954	1
2	PIN-1.0 DIA. X 8.0 Lq	1850972	1
1	HYDRAULIC CYLINDER-2.0 BORE X 24.0 STROKE	1382220	1

# MOUNTING INSTRUCTIONS

HYDRAULIC JACK - DIRECT CONNECT

KIT No. : 1382106

SCRAPER : GZ-625

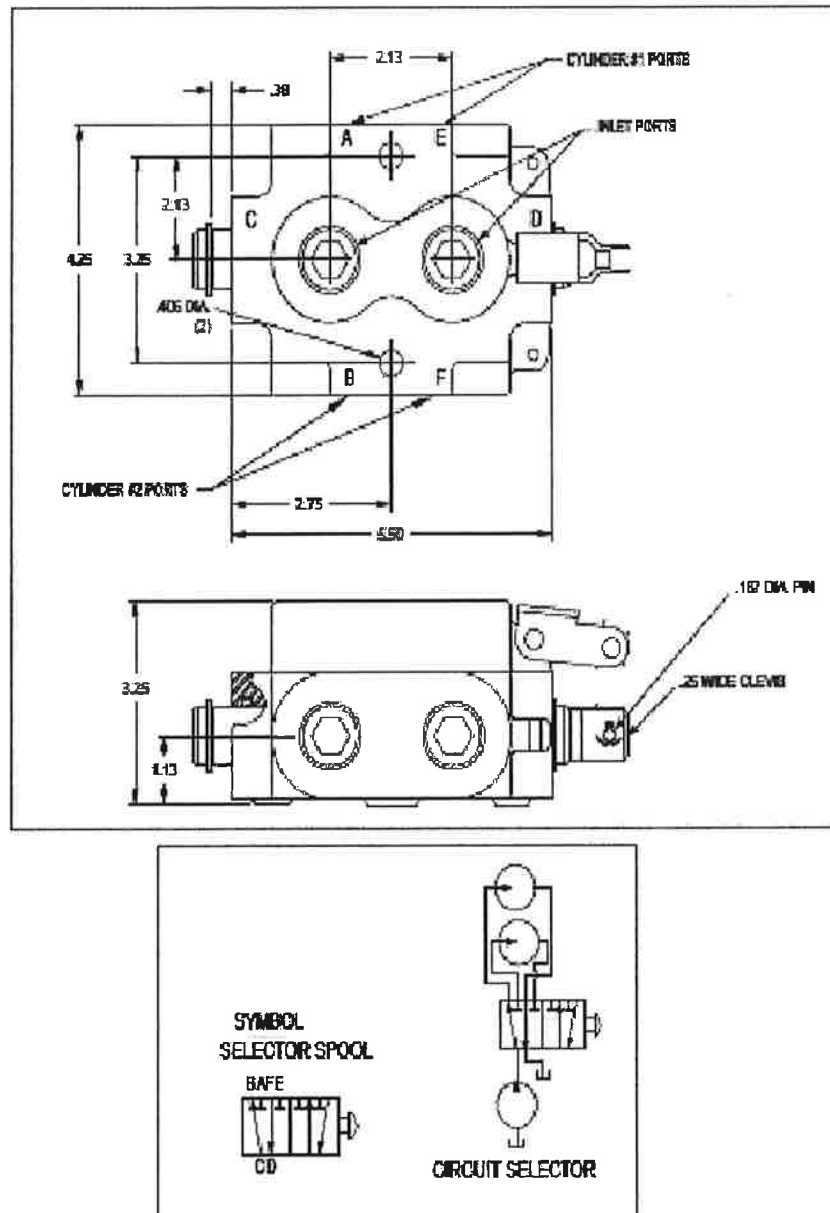
OCT. 05, 2015

1382106

**LEON**

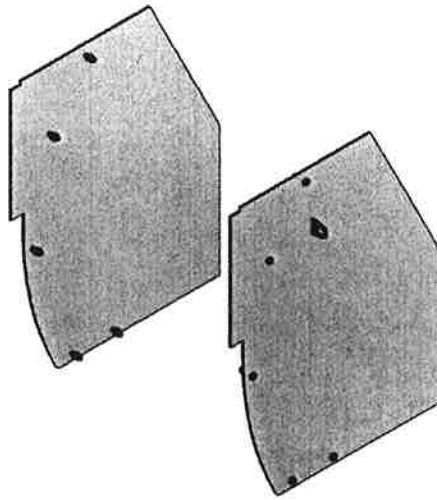
PRINTED IN CANADA

# DOUBLE SELECTOR VALVE #1382323

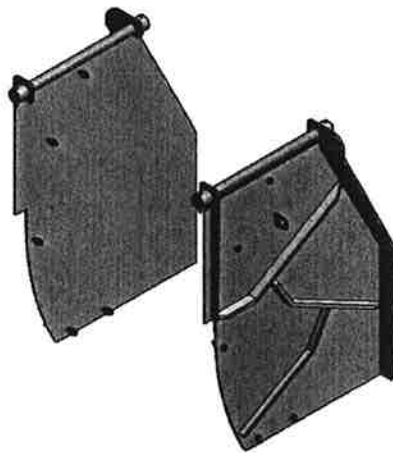


LEONS Mfg.

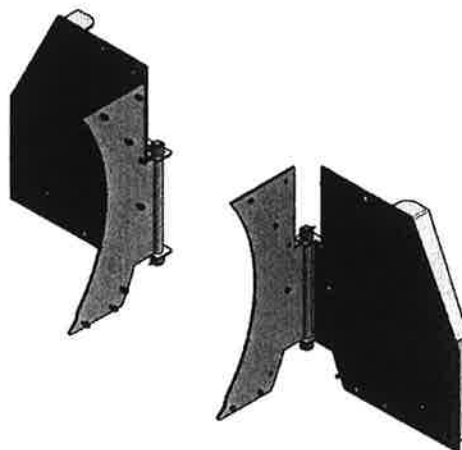
GZ-625 BLADE SIDE  
PLATES



**Figure 1; #1382188, SIDE END PLATES, PAIR, BLADE 60**



**Figure 2; #1382168, BOX END, UP TILT, PAIR, BLADE 60**



**Figure 3; #1382169, BOX END, SIDE TILT, PAIR, BLADE 60**

**LEONS Mfg.**

**GZ-625 HITCHES**

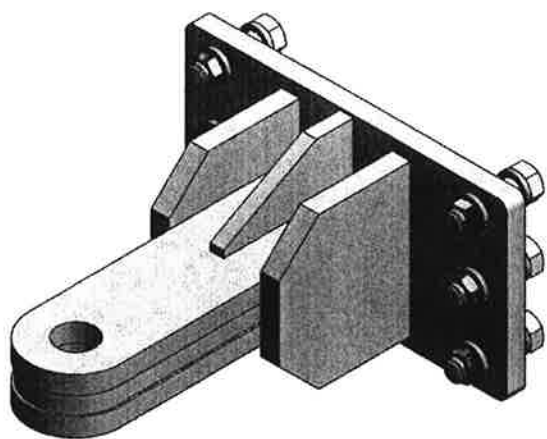


Fig 1; #1382160, HITCH, TONQUE, CAT IV

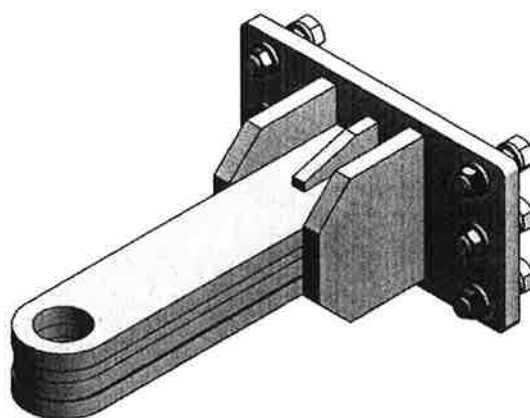


Fig 2; #1382165, HITCH, TONQUE, CAT V

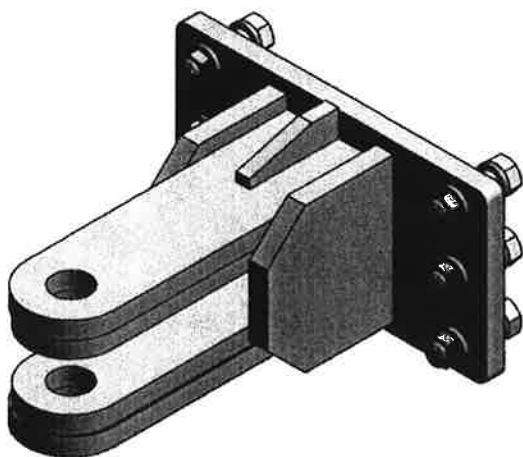


Fig 3; #1382170, HITCH, CLEVIS, CAT IV

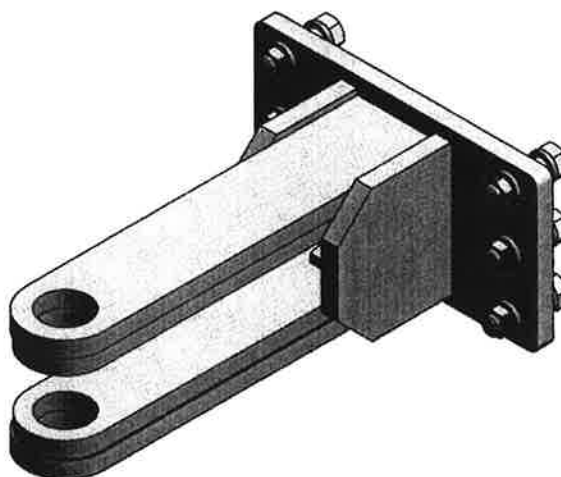


Fig 4; #1382175, HITCH, CLEVIS, CAT V

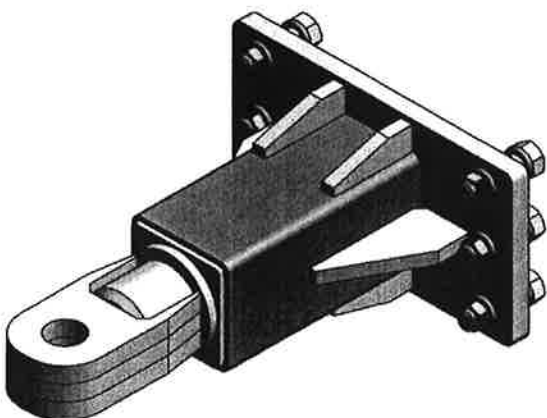


Fig 5; #1382230, HITCH-SWIVEL-TONQUE, CAT IV

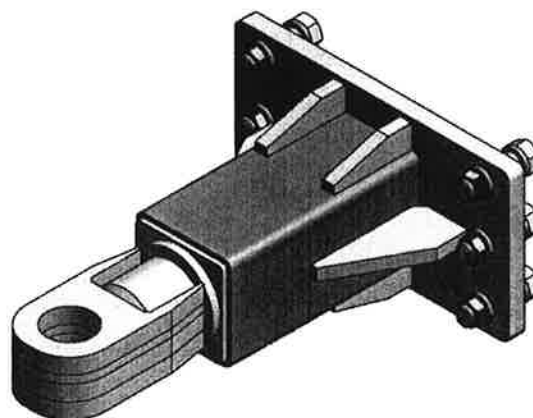


Fig 6; #1382235, HITCH-SWIVEL-TONQUE, CAT V

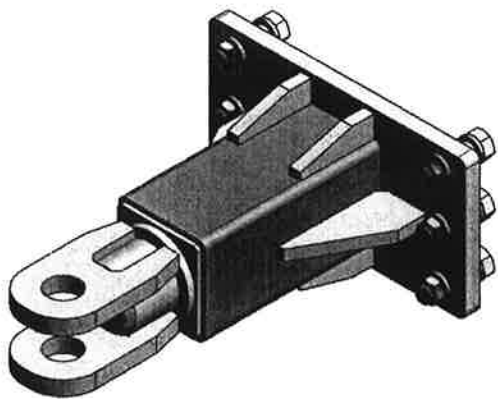


Fig7; #1382240, HITCH-SWIVEL-CLEVIS, CAT IV

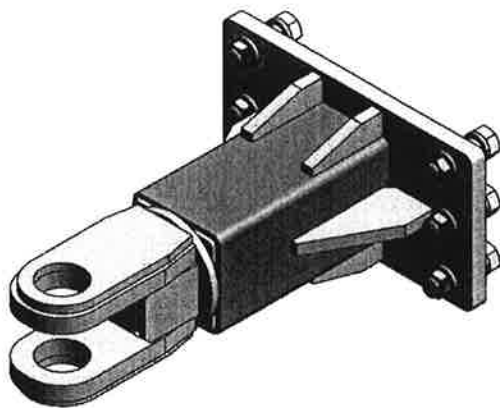


Fig 8; #1382245, HITCH, SWIVEL, CLEVIS, CAT V

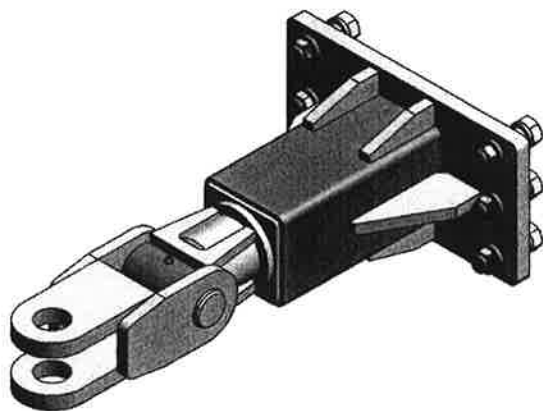


Fig 9, #1382250, HITCH-SWIVEL-PIVOT-CLEVIS, CAT IV

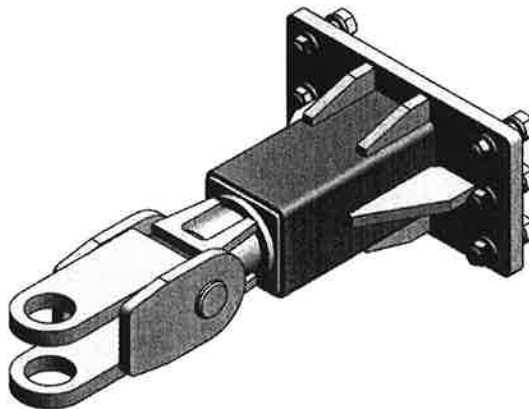


Fig 10; #1382255, HITCH-SWIVEL-PIVOT-CLEVIS, CAT IV

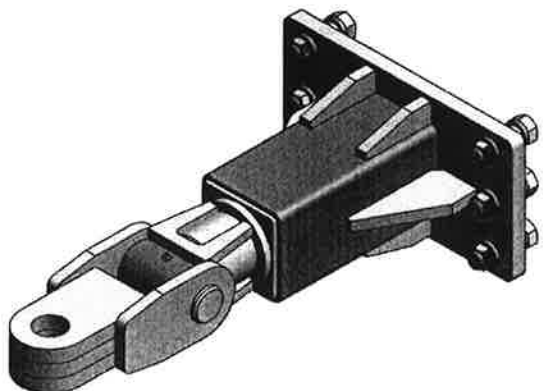


Fig 11; #1382260, HITCH-SWIVEL-PIVOT-TONQUE, CAT IV

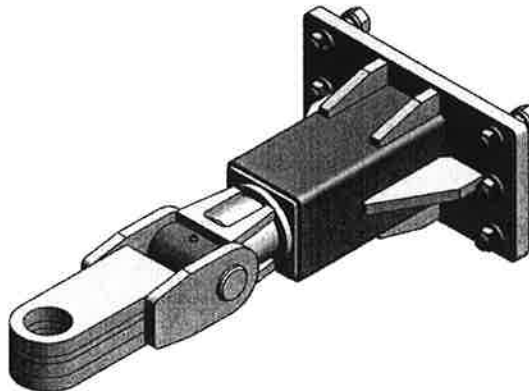
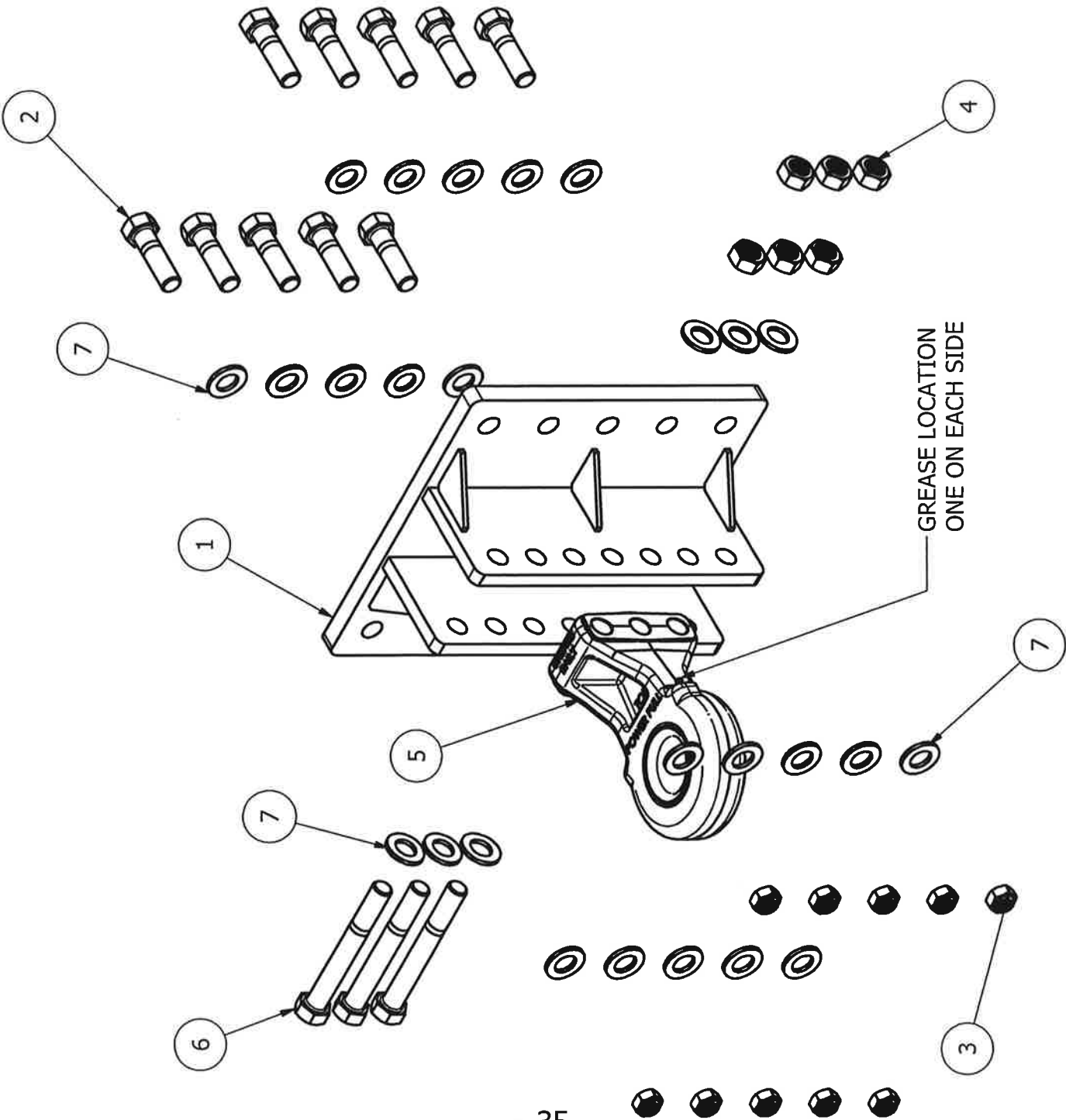


Fig 12; #1382265, HITCH-SWIVEL-PIVOT-TONQUE, CAT IV



HITCH MOUNT ASSEMBLY

PARTS LIST			
ITEM	QTY	PART NUMBER	DESCRIPTION
1	1	1382036	HITCH FRAME MOUNT
2	10	1102254	HCS, GR 5, 1.000-8 UNC X 3.5 LG
3	10	1102556	1" UNC HEX LOCKNUT GR.5 PLATED
4	6	1102555	1" UNC HEX NUT GR.5 PLATED
5	1	1852946	HITCH, CASTING, BH5SABA, CAT 5
6	3	1102262	HCS, GR 5, 1.000-8 UNC X 8.0 LG
7	26	1102659	1" FLAT WASHER, GR.8 PLATED



**PRINTED IN CANADA**

**OCTOBER-2015**