

2025 EXPEDITION® LE

A crossover sport-utility vehicle capable of off-trail exploration, on-trail cruises and enjoyable work days.



EXPEDITION LE
900 ACE TURBO R SHOWN

EXPEDITION LE
900 ACE TURBO SHOWN

// PACKAGE HIGHLIGHTS

- Four Rotax® engines available: 600R E-TEC®, 900 ACE™ Turbo R, 900 ACE Turbo and 900 ACE engines
- Available with 20 in. or 24 in. track options
- Multi-LinQ plate with 125 lb/56.7 kg cargo capacity
- 4.5 in. digital display
- RAS™ X crossover front suspension with 39 in. ski stance
- SC¹-5U articulating rear suspension with locking mechanism (no tool required)
- Air radiator with fan
- Deep snow running boards with large openings
- Removable passenger seat with heated grips
- High passenger backrest
- Hitch receiver with 1,500 lb/680 kg towing capacity when equipped with an HD rear bumper (1,200 lb/544 kg std.)
- High-capacity battery
- Easy-shift transmission (H-L-N) with RER™ electronic reverse (2-stroke)/electro-mechanical reverse (4-stroke)
- Ultra-high windshield with side deflectors
- Pivoting mirrors
- Pilot™ 7.4 skis
- Heated driver's visor power outlet
- Low handlebar strap
- pDrive™ clutch

ROTAX ENGINE	600R E-TEC	900 ACE TURBO R	900 ACE TURBO	900 ACE
Engine details	Liquid-cooled, two-stroke, eRAVE™	Liquid-cooled, four-stroke D.O.H.C., dry sump, turbocharged with intercooler	Liquid-cooled, four-stroke D.O.H.C., dry sump, turbocharged	Liquid-cooled, four-stroke D.O.H.C., dry sump
Horsepower*	125	180	130	95
Cylinders - Displacement	2 - 599.4 cc	3 - 899 cc	3 - 899 cc	3 - 899 cc
Bore - Stroke (mm)	72.3 - 73	73 - 69.7	73 - 69.7	73 - 69.7
Fuel system	E-TEC direct injection	EFI	EFI	EFI
Fuel type - Octane	Premium unleaded - 91	Premium unleaded - 91	Premium unleaded - 91	Regular unleaded - 87
Fuel tank (L/US gal)	42/11.1	42/11.1	42/11.1	42/11.1
Oil tank capacity (L/qt)	3.4/3.6	3.3/3.5	3.3/3.5	3.3/3.5

POWERTRAIN	600R E-TEC	900 ACE TURBO R	900 ACE TURBO	900 ACE
Drive clutch	pDrive with clickers/QRS	pDrive	pDrive	pDrive
Driven clutch	[20 in.] QRS Vent [24 in.]	QRS Vent	QRS Vent	QRS
Drive sprocket pitch (mm/in.)	73/2.86	73/2.86	73/2.86	73/2.86

DRY WEIGHT	600R E-TEC	900 ACE TURBO R	900 ACE TURBO	900 ACE
Dry weight 20 in. track (lb)	619	674	669	643
Dry weight 24 in. track (lb)	640	694	690	664

DIMENSIONS	600R E-TEC	900 ACE TURBO R	900 ACE TURBO	900 ACE
Vehicle overall length (mm/in.)	3,256/128.2			
Vehicle overall width (mm/in.)	1,200 to 1,240/47.7 to 48.8			
Vehicle overall height (mm/in.)	1,513/59.6			
Ski stance (mm/in.)	1,000/39 (adjustable)			
Available tracks (in.) (Length x width x profile)	Silent Cobra WT: 154 x 20 x 1.5 Silent Cobra SWT: 154 x 24 x 1.5 opt.			

SUSPENSION	600R E-TEC	900 ACE TURBO R	900 ACE TURBO	900 ACE
Front suspension			RAS X	
Front shock			KYB¹ 36	
Front suspension travel (mm/in.)			220/8.7	
Rear suspension			SC-5U	
Center shock			KYB 36	
Rear shock			KYB 36	
Rear suspension travel (mm/in.)			239/9.4	

COLOR	600R E-TEC	900 ACE TURBO R	900 ACE TURBO	900 ACE
Catalyst Grey and Black				
Black				

FEATURES	600R E-TEC	900 ACE TURBO R	900 ACE TURBO	900 ACE
Platform	REV® Gen4			
Headlights	Halogen			
Skis	Pilot 7.4			
Seating	WideTrack 2-up			
Handlebar	Standard with J-hooks/Grab handle			
Riser block height (mm/in.)	145/5.7			
Starter	Electric			
Reverse	RER (600R E-TEC) Electro-mechanical (ACE engines)			
Air radiator	Fan			
Brake system	Brembo¹			
Heated throttle lever/grips	Standard (driver and passenger)			
Gauge type	4.5 in. digital			
Windshield	Ultra-high with mirrors			
Runner (in.) - Carbide (in.)	3/8 square - 4			
Bumpers (front/rear)	Heavy-duty/Hitch receiver			

// FEATURE HIGHLIGHTS



1 Rotax 900 ACE Turbo R engine

Now the most powerful 4-stroke engine ever offered in a Ski-Doo. Ferocious, instant acceleration and top speed through bigger fuel injectors, increased boost and optimized intake and exhaust systems. The new cable activated iTC throttle better matches a performance rider's profile while offering three driving modes.



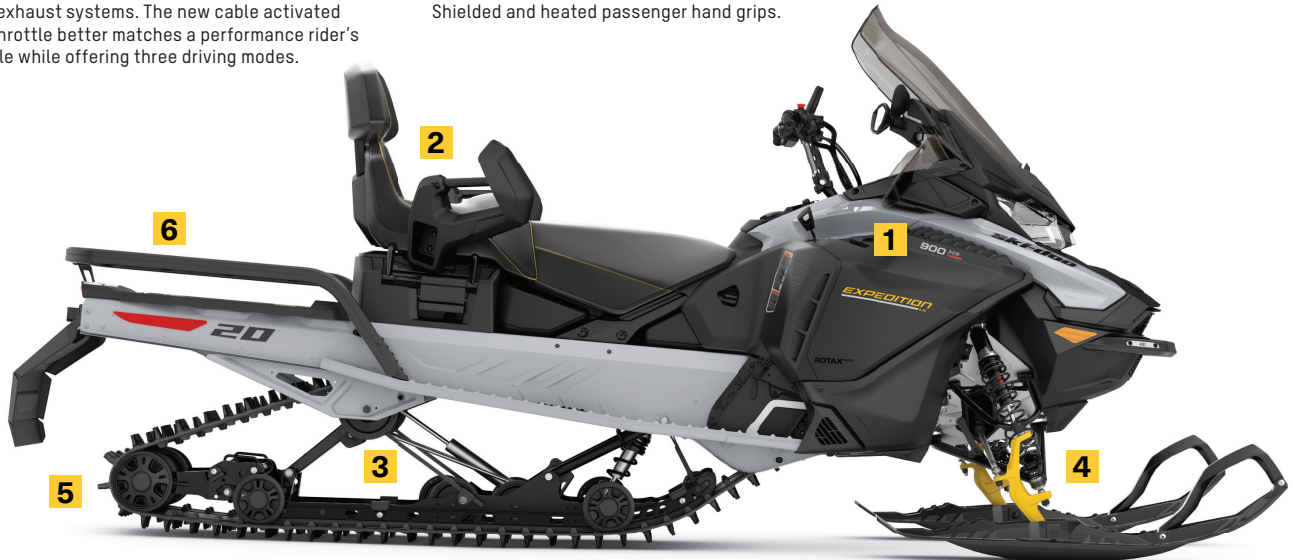
2 Utility 2-up seat

The ideal combination of comfort and convenience. Driver and passenger seat offering comfort and maneuverability for the driver, and convenience and protection for the passenger. Shielded and heated passenger hand grips.



3 SC-5U articulating rear suspension

The articulated rail maximizes deep snow traction in reverse, and its toolless locking mechanism is ideal for towing.

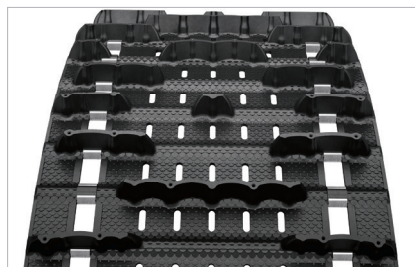


EXPEDITION LE
900 ACE TURBO SHOWN



4 RAS X crossover front suspension

An updated version of our RAS X trail front end for capability on- and off-trail. Light steering feel optimized for crossover usage with adjustable stance.



5 20 in. and 24 in. wide tracks available

A wide range of options built to offer superb flotation and meet any towing needs.



6 Multi-LinQ plate

Standard LinQ adaptable storage. Fits 16 and 20 in. wide LinQ accessories to maximize accessory options. Up to 125 lb (56.7 kg) of cargo capacity.

ski-doo

