

Surface Drive Gathering Chain Silo Unloader



Since 1948

Patz 98C

**Easy installation.
Self-leveling.
Automated unloading.**

**High Gloss Polyester
Powder Coated
Resists Rust!**

**Top three reasons why
customers prefer the
Patz 98C Silo Unloader:**

- Reliability
- High-volume unloading
- Reduced labor costs





98C Silo Unloader

Frozen Silage and Hard Packed Feeds Have Just Met Their Match!

The **PATZ BLUE** Gathering Chain includes closed-die forged hardened cutters and claws to deliver maximum performance you can count on every time!

When you purchase a Patz 98C Silo Unloader with **PATZ BLUE** Gathering Chain and Sprockets, you can expect the following results:

- **Maximum life expectancy** resulting from a more uniform fit between the gathering chain & sprockets.
- **Minimized wear and increased durability** thanks to the consistent hardness level achieved through the manufacturing process.
- **Maximum performance in hard packed and frozen feeds every time** by the closed-die forged hardened gathering chain cutters and claws.
- **High volume delivery for fast feeding** resulting in **reduced labor costs!**



Easy setscrew adjustment of chain tension!

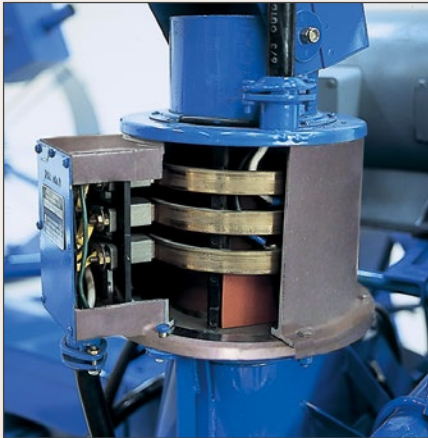


PATZ BLUE Gathering Chain and Sprockets, manufactured using state-of-the-art techniques and heat treating process, enable a precise degree of hardening. Includes closed-die forged hardened cutters and claws for superior strength and performance resulting in high volume delivery for fast feeding. All-welded construction eliminates points of corrosion.

The Patz electrical joint is unmatched in design.

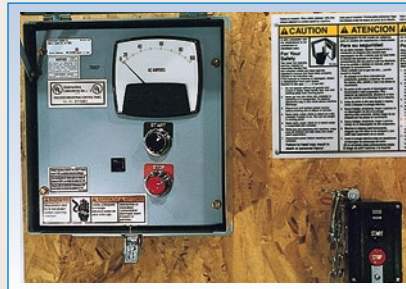


**FLEXIBLE PAYMENT PLANS
AVAILABLE THROUGH
OUR FINANCIAL SERVICES
PARTNERS! ASK FOR DETAILS.**



(Shown cut-away for viewing.)

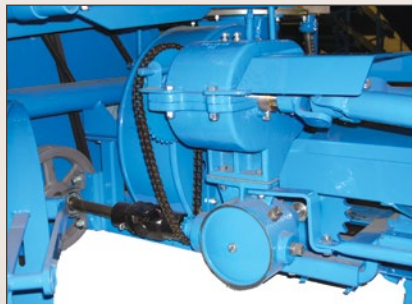
- Easy serviceability.
- Easy to grease.
- **7/8" extra wide (22 mm) copper-alloy rings & brushes.**
- Large 3-3/4" x 6" (95 x 152 mm) **easy access opening** to brushes.
- **One-piece housing** sealed against dust & moisture.
- **Dielectrically tested** to assure all circuitry functions properly.
- **CSA approved cord** resists oil, silage acids, moisture, and abrasion.
- **Cord features** copper construction throughout to carry maximum electrical loads.



For operator safety and convenience, a control panel with ammeter and remote pushbutton station are required equipment.



Drive wheel cast-iron gearbox provides strength and rigidity to withstand high torque forces. Quality construction throughout provides years of service.

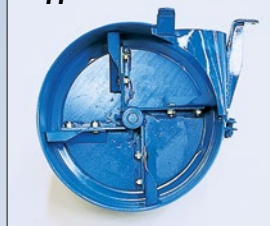


The 98C's depth-of-cut control and counterweight for the gathering chain **eliminate daily adjustments while providing a full flow of silage every feeding – right to the bottom of the silo.**

Flat Blades



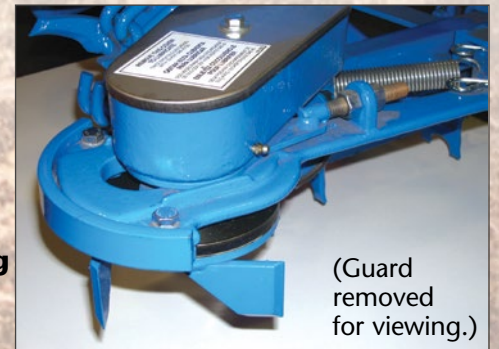
Cupped Blades



The high-capacity blower's high-strength, corrosion-resistant steel impeller blades with welded studs are adjustable to allow close tolerance for **maximum blower efficiency** and **longer service life**. Choose from flat or cupped blades.

The power cutter's unique design with its spinning action follows the exact curvature of the silo wall.

Spring tension keeps the spinning, self-sharpening knives in position resulting in a "clean-shaven" silo wall.



(Guard removed for viewing.)

An oil-bath for the roller chain-driven power cutter **provides long service life**. Wear shoe is **easy to replace** and **keeps maintenance economical**.

The Patz design loads the blower from the side to provide superior blowing performance. Full circle blower band provides improved blower efficiency.

Optional stainless steel blower is also available. (Pictured left.)



Specifications:

Unloader sizes

Four sizes fit silos from 12 to 30 ft. (3.66-9.14 m) in diameter.

Motors

7-1/2 & 10 hp. single phase.
10 hp. 3 phase.

Gathering chain

Unit 66 Double-Hook, oil quenched, closed-die forged hardened cutters and claws or without cutters.

Caster wheels

Adjustable, control level of silage at center of silo.

Blower cap

14-gauge (1.9 mm) steel sides and 11-gauge (3 mm) steel top.

Construction

All steel.

Electrical connections

CSA approved.

Clutch (Optional)

Manual operation. Permits cleaning of chain and blower before turning off the motor.

Options

Size option kit, frost eliminator kit, weight control hitch, tripod, hitch, manual or motor-driven winch assembly.

Quick and easy installation from parts to same day operation or storage!

The Patz 98C can replace any top unloader – even if your silo is partly empty! All 98C parts go up the silo chute for easy installation whether your



silo is full or partly empty. So, replace your old unloader now with the preferred replacement unloader - the Patz 98C Surface Drive Silo Unloader.

When refilling the silo, the 98C can be raised to the top of the dome above the silo wall providing you with every inch of feed storage.



Reasons why choosing genuine PATZ BLUE Silo Unloaders is your best investment!

1. Dependable, superior **quality products**.
2. **Customer support** service before and after the sale.
3. Company certified **technical support** personnel are just a phone call away.
4. **Flexible payment plans** available.
5. **Local Patz dealership support**. From sales to certified service personnel, your local Patz dealer has the expertise, products & programs to keep your operation running efficiently and successfully.
6. Leading **warranty** in the industry: 1-year for all silo unloaders.



CAUTION: Never operate Patz equipment without all shields and guards in place. Safety is no accident. Before operating any piece of equipment, be sure to read and understand the operator's manual. This manual should be kept with the machine at all times. Additionally, make sure all safety shields and devices are functioning properly and are securely in place.



For some photos in this brochure, guards were removed for photographic purposes only to allow viewing of the equipment features. Before operating equipment, all guards must be in place. Because Patz continually improves and updates products, Patz reserves the right to change the construction of machines or attachments or any part thereof without incurring any obligation to make like changes on Patz machines, or attachments previously delivered. Specifications and prices subject to change without notice.

Proven Performance You Can Count On!

Patz Corporation

917 Business 141, POB 7 • Pound, Wisconsin 54161-0007

Ph: (920) 897-2251 • Fax: (920) 897-2142

www.patzcorp.com • info@patzcorp.com

