



Since 1948

# 400 Gutter Cleaner



*Farmers worldwide continue to experience the reliability, durability and proven performance of the Patz Gutter Cleaner for meeting their manure handling needs since 1948!*

**Patz Gutter Cleaners are flexible and versatile to meet your exact needs – from traditional tie-stall barns to today's modern dairy facilities.**



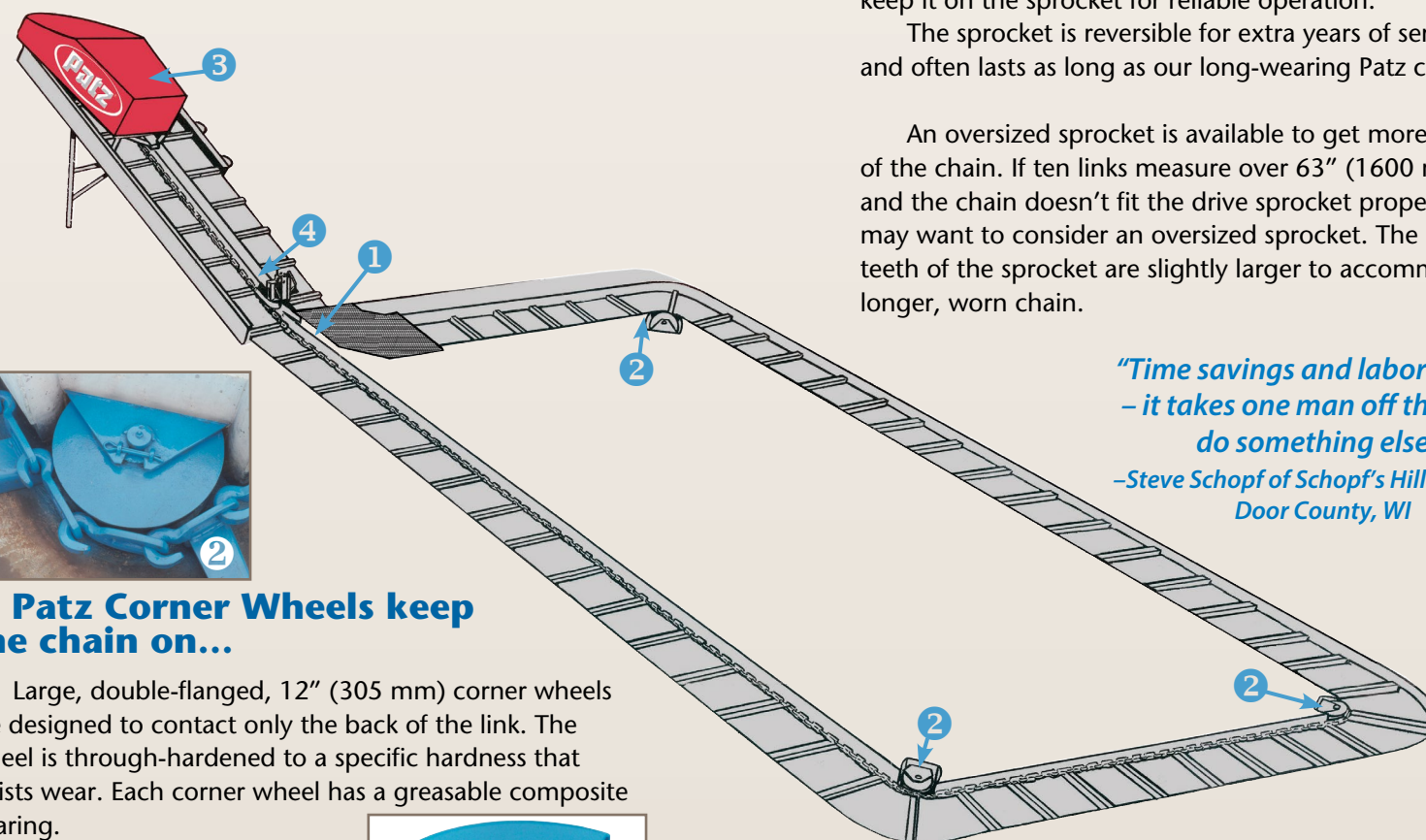


# Gutter Cleaner is the best value for your investment!

**PROVEN PERFORMANCE  
SINCE 1948!**

Whether you're looking for a replacement gutter cleaner for your current barn or installing a gutter cleaner in a new facility, choose Patz for proven performance you can depend on 365 days a year! The Patz Gutter Cleaner is designed to move manure around corners and up inclines. The all-steel slides and one-piece steel flites with wear shoes are engineered to withstand the rugged wear of everyday operation.

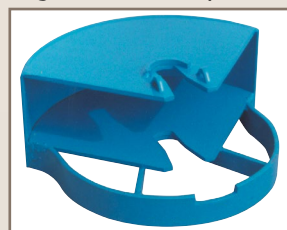
**Let a Patz Gutter Cleaner handle your manure  
so you don't have to!**



## ▲ Patz Corner Wheels keep the chain on...

Large, double-flanged, 12" (305 mm) corner wheels are designed to contact only the back of the link. The wheel is through-hardened to a specific hardness that resists wear. Each corner wheel has a greasable composite bearing.

Corner wheel housing allows easy removal of corner wheel for replacement or maintenance - without breaking concrete!



*"It's convenient and saves me extra labor."  
-Pat Zellner, County Line Farms in New Franken, WI  
Patz Gutter Cleaner installed in new calf barn in 2004.*



**Patz Drive  
Sprocket protects  
the chain, keeps  
the chain on and  
lasts for years.**

The Patz Chain fits the Patz 4-tooth sprocket without bending the links. A massive sprocket tooth pushes every link behind the hook.

The large sprocket teeth pick up the chain and help keep it on the sprocket for reliable operation.

The sprocket is reversible for extra years of service, and often lasts as long as our long-wearing Patz chain.

An oversized sprocket is available to get more life out of the chain. If ten links measure over 63" (1600 mm) and the chain doesn't fit the drive sprocket properly, you may want to consider an oversized sprocket. The hub and teeth of the sprocket are slightly larger to accommodate a longer, worn chain.

*"Time savings and labor savings  
- it takes one man off the job to  
do something else."*

*-Steve Schopf of Schopf's Hilltop Dairy,  
Door County, WI*



**▲ Patz Hold-Down  
Shoe protects the  
chain.**

The Patz hold-down shoe adjusts up or down easily with a simple setscrew to get maximum performance. The chain is held down in the gutter so the flites

move all the manure up the slide. The entire shoe is through-hardened, providing many years of service life.

A precleaner helps keep materials out of the hold-down shoe to ensure reliable performance.

## Customize your Patz Gutter Cleaner to suit your needs!

### Electric Motor

A 2, 3, or 5 hp. motor can be used, depending on the length of chain and the use of a standard or heavy-duty reducer. Your Patz dealer will advise you in selecting a motor.

### Final Drive Shaft Sizes

- 1 1/8 inches (49 mm)
- 2 1/2 inches (64 mm)

### Roller Chain Sizes

- Standard Reducer...#60 and #40 Chain.
- Heavy-Duty Reducer...#80 and #50 Chain.

### Two Reducer Sizes

Each has a welded steel frame, grease fittings at all critical bearings, and rugged roller chain drive.

- Standard reducer for up to 280 feet (85 m) of gutter cleaner chain.
- Heavy-duty reducer for longer pulls of gutter cleaner chain.

### Reducer Brakes

Our standard reducer brakes prevent chain backup when motor is turned off.

### Flite Cleaner

The flite cleaner is under spring tension and scrapes the top and front of each flite. A clean flite assures efficient manure removal.

### Chain Tightener

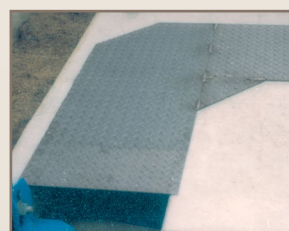
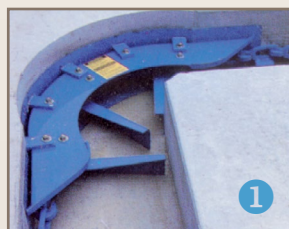
The chain tightener is a spring-loaded bar that pushes outward against the chain. Working in conjunction with the hold-in angle, they maintain proper chain tension. Chain links can be removed without tools to take up excess slack.



## Patz Return Corner Shoe is designed for reliability and strength

The return corner shoe guides the chain smoothly through the inside corner. Only the hook of the link contacts the return shoe. The high strength, corrosion-resistant steel return corner shoe is fastened to a sub-anchor that is firmly secured to an anchor embedded in the concrete wall and floor. A steel wear gutter plate protects the bottom of the gutter.

For added safety, Patz recommends the gutters be covered in all areas, where possible. Provide added safety with steel gutter covers available from Patz.



## High-Strength, Corrosion-Resistant Steel or Stainless Steel Slides

The slide is constructed of 11-gauge HSLA steel for long life and welded to the center beam for greatest structural strength. The stainless steel slide is 12-gauge, type 304. The loaded side [10-5/8 inch (270 mm) high] keeps manure in the gutter cleaner and the surrounding area clean. Each slide is custom built and includes return slide lips. Our gutter cleaner has a 10-year prorated warranty. Ask for details.



# More Features and Benefits of the 400.

*An affordable & efficient way to move your manure.*

## Reasons why choosing a genuine Patz Gutter Cleaner is your best investment!

1. **Dependable, superior quality products.**  
*Since 1948, Patz has established a tradition of quality by providing products that have gained a world-wide reputation for long-lasting dependability and superior performance.*
2. **Customer support services before and after the sale.**
3. **Company certified technical support personnel with years of experience are just a phone call away.**
4. **Flexible payment plans available.**
5. **Local Patz dealership support.**  
*The same dedication to quality that Patz exhibits in equipment is expressed in the training and the type of person chosen to be a Patz dealer. Patz sponsors a continuing program of training seminars that consist of intense in-the-field and in-plant training sessions.*  
  
*From sales to certified service personnel, your local Patz dealer has the expertise, products and programs to keep your operation running efficiently and successfully.*
6. **Leading written warranty in the industry.**

**PATZ®** - the name you can trust to meet your material handling requirements!

## Specifications

### Chain:

400 hook-and-eye, all-steel link.

### Flites:

467: high, steel flite, 1/2 in. (13 mm) wear shoes welded to bottom.

447: 2 in. (51mm) high, steel angle, 1/2 in. (13 mm) wear shoes welded to bottom.

### Flite Spacing:

12 in., 18 in. or 24 in. (305 mm, 457mm, 610 mm).

### Gutter Width:

15 to 20 in. (381 to 508 mm) with 1/2 in. (13 mm) increments.

### Drive Unit:

Heavy-duty reducer drive unit; belt and roller chain drive.

### Motor:

2 hp., 3 hp., or 5 hp.

## Printed Warranty

**Patz chain is backed by a 15-year (5-year full) extended written warranty. Compare the Patz chain's warranty with any other hook-and-eye chain warranty. You will see why Patz chain is your best investment. For your protection, insist on a printed warranty that details all of the items covered and exactly how compensation will be made.**

**Note: New Patz contact points must be installed at the same time as new Patz chain in order to qualify for warranty.**



**CAUTION:** Never operate Patz equipment without all shields and guards in place. Safety is no accident. Before operating any piece of equipment, be sure to read and understand the operators manual. The manual should be kept with the machine at all times.

Additionally, make sure all safety shields and devices are functioning properly and are securely in place.



For some photos in this brochure, guards were removed for photographic purposes only to allow viewing of the equipment features. Before operating equipment, all guards must be in place. Because Patz continually improves and updates products, Patz reserves the right to change the construction of machines or attachments or any part thereof without incurring any obligation to make like changes on Patz machines, or attachments previously delivered.

Specifications and prices subject to change without notice.



**Since 1948**

## Proven Performance You Can Count On!

**Patz Corporation**

**917 Business 141, POB 7 • Pound, Wisconsin 54161-0007**

**Ph: (920) 897-2251 • Fax: (920) 897-2142**

**www.patzcorp.com • info@patzcorp.com**

