

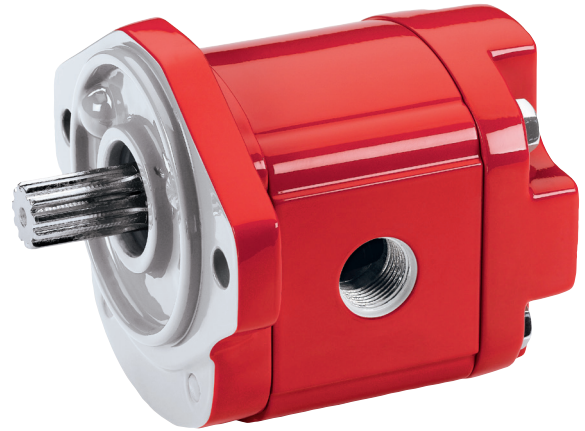
F SERIES

GEAR PUMPS



HIGH PERFORMANCE IN A COMPACT DESIGN

Ultimate power and performance in a small package best describes the F4 Series gear pumps. The pressure balanced bushing blocks and sleeve bearings provide both long life and high performance.



KEY FEATURES

- 12 Standard sizes
- Pressures to 3625 PSI (250 bar)
- Speeds to 3500 RPM
- Low noise level
- Maximum efficiency
- Compact design
- Dowel pin design
- SAE spline
- Sae straight thread o-ring Ports
- Full one year warranty
- 100% Break in and test

PUMP SPECIFICATIONS

MODEL NUMBER	DISPLACEMENT CUBIC IN (CC)	MAX* RPM	MIN* RPM	MAX PRES PSI (BAR)	O.D.T.** INLET REAR	O.D.T.** INLET SIDE	MAX INLET VACUUM	WEIGHT LBS (KG)
PF4-107	0.24 0(4)	3500	1000	3625 (250)	1-1/16	1-5/16	6 IN.HG. (.20 BAR)	07.51 (3.42)
PF4-160	0.37 0(6)	3500	900	3625 (250)	1-1/16	1-5/16	6 IN.HG. (.20 BAR)	07.69 (3.49)
PF4-212	0.49 0(8)	3500	900	3625 (250)	1-1/16	1-5/16	6 IN.HG. (.20 BAR)	07.86 (3.56)
PF4-264	0.61 (10)	3500	800	3625 (250)	1-1/16	1-5/16	6 IN.HG. (.20 BAR)	08.02 (3.64)
PF4-290	0.67 (11)	3500	800	3625 (250)	1-1/16	1-5/16	6 IN.HG. (.20 BAR)	08.12 (3.68)
PF4-368	0.85 (14)	3500	600	3625 (250)	1-1/16	1-5/16	6 IN.HG. (.20 BAR)	08.38 (3.80)
PF4-424	0.98 (16)	3500	600	3625 (250)	1-1/16	1-5/16	6 IN.HG. (.20 BAR)	08.55 (3.88)
PF4-502	1.16 (19)	2750	600	3625 (250)	1-1/16	1-5/16	6 IN.HG. (.20 BAR)	08.81 (4.00)
PF4-606	1.40 (23)	2350	600	3400 (235)	1-1/16	1-5/16	6 IN.HG. (.20 BAR)	09.15 (4.15)
PF4-714	1.65 (27)	2350	600	2750 (190)	1-1/16	1-5/16	6 IN.HG. (.20 BAR)	09.49 (4.30)
PF4-818	1.89 (31)	2000	600	2400 (165)	1-1/16	1-5/16	6 IN.HG. (.20 BAR)	09.84 (4.46)
PF4-870	2.01 (33)	2000	600	2250 (155)	1-1/16	1-5/16	6 IN.HG. (.20 BAR)	10.01 (4.54)

* Maximum RPM shown at 0 In.Hg. Vacuum for -16 side inlet port.

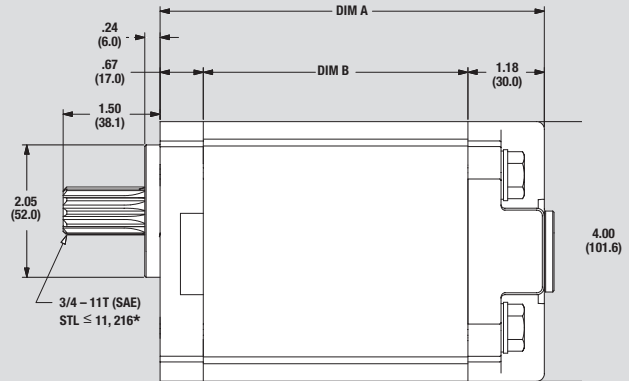
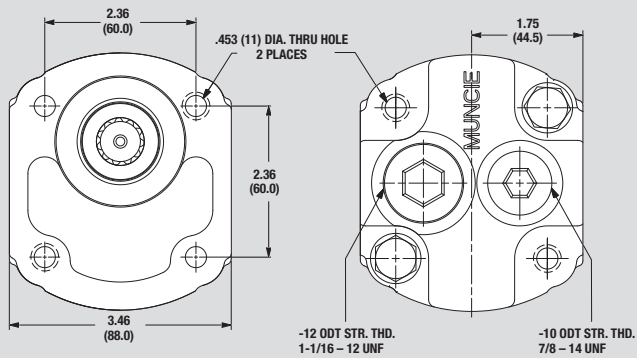
** Port thread size shown

Notes: For Ford TorqShift® 4x4 applications, order pump code PF4-***-16QSRL. PF4-502 & larger pump sizes are not applicable on Ford TorqShift® gas 4x4 application. Maximum oil temperature is 200°F (93.5°C). Buna N seals are standard.

DIRECT MOUNT DIMENSIONS

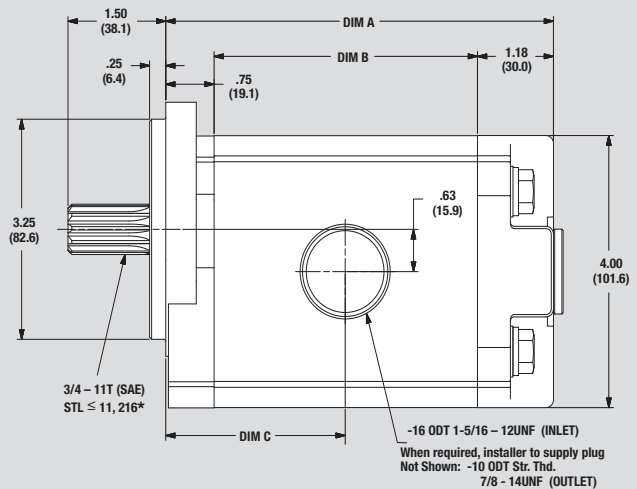
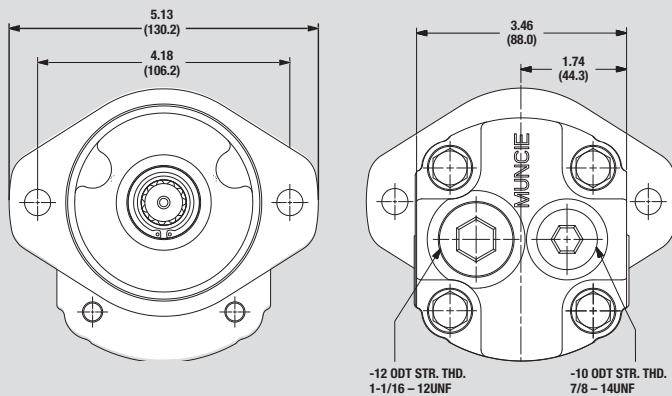
F4 PUMP WITH "Q" FLANGE

(Rear ports only)



F4 PUMP WITH "SAE A" FLANGE

(Side and rear ports shown)

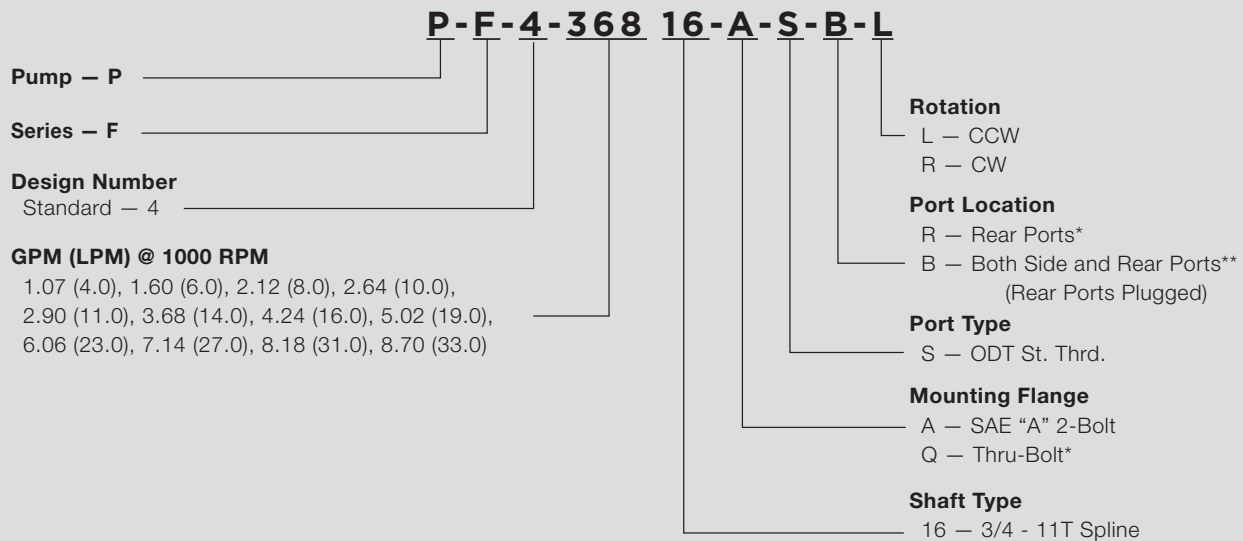


OVERALL LENGTHS

MODEL	DIM A IN (MM)	DIM B IN (MM)	DIM C IN (MM)
PF4-107	3.78 (96.0)	1.85 (47)	1.68 (42.6)
PF4-160	3.91 (99.2)	1.97 (50)	1.73 (44.1)
PF4-212	4.03 (102.4)	2.09 (53)	1.80 (45.7)
PF4-264	4.15 (105.5)	2.20 (56)	1.86 (47.3)
PF4-290	4.22 (107.1)	2.28 (58)	1.89 (48.1)
PF4-368	4.40 (111.8)	2.48 (63)	2.00 (50.7)
PF4-424	4.96 (125.9)	3.03 (77)	2.26 (57.5)
PF4-502	5.14 (130.6)	3.23 (82)	2.35 (59.8)
PF4-606	5.39 (136.9)	3.46 (88)	2.48 (63.0)
PF4-714	5.63 (143.1)	3.70 (94)	2.60 (66.1)
PF4-818	5.88 (149.4)	3.94 (100)	2.72 (69.2)
PF4-870	6.01 (152.6)	4.09 (104)	2.79 (70.8)

* NOTE: The pump input shaft can withstand torques up to the designed shaft torque limitation (STL). This figure is based on multiplying the pump cu. in. displacement times the pump pressure ($D \times P < STL$).

MODEL NUMBER CONSTRUCTION



Notes: Not all pump sizes stocked for SAE “A” mounting flange.
For additional information on PTOs for the Ford TorqShift transmission, see FR Series PTO brochure number MP02-09.

* Required for 16Q shaft and flange

** Not Available on Q Flange. Recommended for 16A shaft and flange.

OIL RECOMMENDATIONS

Muncie does not promote specific manufacturers' brands of oil. Recommendations below are guidelines; consult oil manufacturer for exact application needs.

Viscosity Range:

Viscosity Minimum: 50-60 SUS (7.5-10.5 cST)

Viscosity Optimum Continuous: 60-100 SUS (10.5-21.6 cST)

Viscosity Maximum @ Startup: 7500 SUS (1600 cST)

Viscosity Index: 90 Minimum

Aniline Point: 175 Minimum

Pour Point: 15°F (-10°C) Maximum

Foam Resistance: Recommended

Rust Resistance Inhibitors: Recommended

Corrosion Resistance: Recommended

Oxidation Stability: Recommended

Anti-Wear Additive: .06% Zinc Minimum*

Note: Cold weather operation requires special oil considerations. Viscosity should not exceed 7500 SUS (1600 cST) at lowest startup temperature. Continuous operation should range between 60-1000 SUS (10.5-216 cST) for all temperature ranges. Never use diesel fuel or kerosene to thin oil.

*Anti-Wear Additives may be recommended by some motor manufacturers. However, they are optional and typically not required for gear pump or gear motors.



Muncie Power Products, Inc., Member of Interpump Group
201 East Jackson Street, Muncie, Indiana, USA 47305
1-800-367-7867

Specifications are subject to change without notice. All rights reserved.
Please check www.munciepower.com for warranties and current versions of literature.
MP15-16 (Rev. 02-15)