

AIR DRILL CARTS

With a new auger design and two 175-bushel tanks, the ADC2352 Air Cart is equipped to work hard, covering a lot of ground in one day. The auger has been repositioned to the driver's side and has increased capacity, which enables

the drill to be loaded faster. For added convenience, the two tanks allow operators to run fertilizer or seed through either tank simultaneously. The ADC2220 cart is an economy model with two 110-bushel steel tanks.



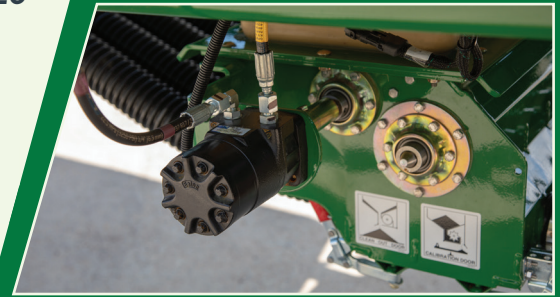
AIR DRILL CARTS

Air Drill Carts	Capacity in Bushels	Cart Width	Height (auger stowed*)	Length (auger stowed*)	Weight, Empty
ADC2220	2 x 110-bu.	12' 2"	10' 6"	18' 10"	5,360
ADC2352	2 x 175-bu.	9' 10"	11' 2"	25'	8,100

See www.greatplainsag.com for complete specifications.

FEATURES & BENEFITS

HYDRAULIC DRIVE (ADC2352)

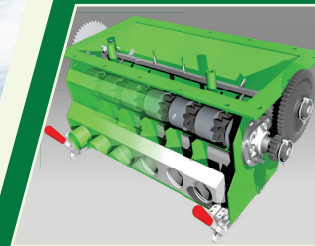


Hydraulic drive gives the operator access to full on-the-go variable-rate seeding. Each tank can be controlled separately to allow two different rates to be used simultaneously.



ADDITIONAL STANDARD FEATURES

- 6" diameter auger w/ filling and emptying capabilities (ADC2220)
- Basic monitor: fan speed, ground speed, meter RPMs, low bins
- Easily adjusted gearboxes for setting seed and fertilizer rates
- Heavy-duty tongue jack
- Adjustable-height hitch w/ safety chains
- Electric clutch drive w/ automatic engagement
- Hydraulics to attach Great Plains Air Drill Implements
- High-capacity (fan-oil) return coupler
- Large, easy-to-read air pressure gauge



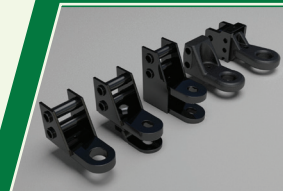
UNIFORM SEED DISTRIBUTION

A single fan supplies air to a divided manifold where the star-wheel meters drop the seed into the airflow of each tower. The towers use a transition cone to uniformly divide the seed to individual rows. Full-length seed tubes complete the process, delivering seed to the bottom of the trench.



ENHANCED MONITORING (ADC2352)

New DrillCommand™ Software and fully ISO-compatible electronics give the operator full control of drill and blockage functions with an interface that is easy to use with any modern terminal. Electronics are now centrally located and easily accessible.



CHOOSE FROM FIVE HITCH OPTIONS

Hitch choices include (l to r) large-diameter strap, small-diameter strap, small-diameter clevis, large-diameter cast hitch, and Cat. 5 cast hitch.



HIGH-CAPACITY SEALED HOPPERS

The ADC2352 Cart features two 175-bushel poly bins and the ADC2220 Cart features two 110-bushel steel bins for a total capacity of 350- and 220-bushel, respectively.



LARGE TIRES & WHEELS

Large 23.5x26 12-ply tires are available on pull-behind carts to help prevent soil compaction (ADC2352). The ADC2220 Cart features 21.5L-16SL 10-ply tires.

OPTIONS (see website for complete list of features & options)



HYDRAULIC AUGER



VT TOUCH 800 MONITOR



VT TOUCH 1200 MONITOR