

Triple Disc Mower and Mower Conditioner Combinations



[www.kuhn.com](http://www.kuhn.com)

**GMD – Front & Rear Mount Combinations**

**FC – Front & Rear Mount Combinations**



**Invest in Quality®**

GMD 25 F SERIES / 30 SERIES

FC 25 F SERIES / 30 SERIES

# MAXIMIZING OUTPUT. OPTIMIZING FORAGE.



KUHN has developed new triple mowers and mower conditioners to support you in the inevitable race for output. Farms have increasingly larger areas to harvest, optimal mowing periods are limited, and achieving a top-quality forage is essential. In these times, you can count on the performance, work quality and reliability of KUHN's mowing technology.

## ENSURE A CONSISTENT CUTTING HEIGHT

Superior ground adaptation is an absolute necessity to obtain a quality cut and clean crop on rolling ground and slopes. The wider the working width is, the more important this becomes.

## INNOVATIVE FEATURES PROVIDE QUALITY FEED

KUHN large-width mowers have some common features to ensure that all of your forage is cut with high quality: Lift-Control hydropneumatic suspension, Optidisc® Elite cutterbar, and on FC models the DigiDry® finger conditioner and Diamond Block® rubber roller conditioner.

## THE REFERENCE FOR RELIABILITY

From the Protectadrive® safety on the cutterbar to the hydraulic safety breakaway, it is no coincidence that KUHN mowers and mower conditioners are the reference in the market.

## Mowers and Mower Conditioners GMD and FC in brief:

Models	Working Width	Average Swath Width	Number of Discs	Conditioning System
GMD 3125 F	10'2" (3 m)	3'3" - 4'11" (1 - 1.5 m)	7	-
GMD 3525 F	11'6" (3.5 m)	3'3" - 4'11" (1 - 1.5 m)	8	-
GMD 8730	27'2" - 28'10" (8.3 - 8.8 m)	6'6" - 7'9" (2.0 - 2.4 m)	2 x 7	-
GMD 10030	31'2" - 32'6" (9.5 - 9.9 m)	9'2" (2.8 m)	2 x 8	-
FC 3125 DF	10'2" (3.10 m)	3'11" - 6'7" (1.3 - 2.0 m)	7	DigiDry® Finger Conditioner
FC 3525 DF	11'6" (3.5 m)	3'11" - 6'7" (1.3 - 2.0 m)	8	DigiDry® Finger Conditioner
FC 3525 RF	11'6" (3.5 m)	4'7" - 6'7" (1.4 - 2.0 m)	8	Diamond Block® Rubber Roller Conditioner
FC 8830 D	27'3" - 28'7" (8.3 - 8.6 m)	4'9" - 6'11" (1.5 - 2.1 m)	2 x 7	DigiDry® Finger Conditioner
FC 10030 D	31'2" - 32'6" (9.5 - 9.9 m)	6'1" - 7'10" (1.9 - 2.4 m)	2 x 8	DigiDry® Finger Conditioner
FC 10030 R	31'2" - 32'6" (9.5 - 9.9 m)	6'1" - 7'10" (1.9 - 2.4 m)	2 x 8	Diamond Block® Rubber Roller Conditioner

# EXCELLENT GROUND ADAPTATION MEANS TOP-QUALITY FORAGE!



KUHN is at your side to help you produce high-quality forage with minimal ash content. On KUHN triple mowers, special features are built in for improved adaption of ground contours, exceptional cut quality and uniform height of crop stubble.



## FLEXIBLE FRONT UNIT THAT ADAPTS TO THE LAND

Overall suspension design increases vertical and lateral movement to follow the ground while providing a more open view for the operator. We are talking about an angular travel range of 30° and vertical range of 27.5" (70 cm), while the ground pressure remains constant. Its ability to automatically adapt to field contours or unseen foreign objects is unmatched in the industry.



## IMPRESSIVE TRAVEL RANGE OF REAR UNITS

The FC and GMD 10030 rear units follow virtually all ground contours.

- Pendulum-type articulation
- Hydraulic lateral shifting up to 18" (46 cm) for improved overlapping
- Vertical travel range of 18.5" (47 cm)
- Angular flexibility from +13.3° to -8.1° at 18" (46 cm) overlap

# A GOOD MATCH!



## NO CROP LEFT UNCUT

For a clean and complete cut on slopes and in sharp turns on 10030 machines, each rear mower unit can be shifted laterally by 18" (46 cm) to create an increased overlap between the front and rear units. The driver can modify the working width during operation from the cab. This feature is useful in extremely hilly conditions and irregular shaped fields where a lot of turning is required.

# A CLEAN & CONSISTENT CUT

The Optidisc® Elite cutterbar provides the perfect combination of farmer insight and KUHN engineering that helps generate valuable solutions for any hay and forage operation. It combines unmatched cut quality with great reliability and user comfort. The Optidisc® Elite lubed-for-life cutterbar perfectly responds to the requirements of large farms and custom operators.

Enhancements on the Optidisc Elite cutterbar include:

- A lower profile to improve cut quality in difficult conditions while also reducing dirt and ash incorporation
- Fast-Fit® knives that provide longer knife life with the ability to rotate 360 degrees to achieve a higher quality cut
- A low maintenance lubed-for-life design that lasts longer due to disc skids, wear plates and liners
- No routine oil changes required



## OPTIDISC ELITE CROP CONTROL

The innovative design offers exclusive differential disc spacing. Narrower spacing at **diverging discs** provide greater knife overlap for cleaner cutting. Wider spacing at **converging discs** provides greater capacity and higher throughput.

### OUTSTANDING CROP LIFT

The cutting discs and end cones provide high crop lift, allowing cut materials to quickly leave the cutterbar and enter the conditioner, especially in thick crop conditions.

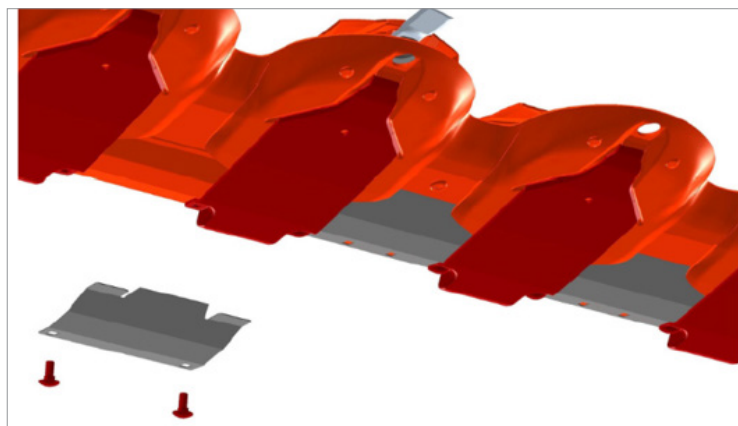
### PROTECTIVE SKIDS

Sticky crop conditions may cause some soil to accumulate in front of the cutterbar – but not with Optidisc Elite! Its skids are designed to improve sliding and protect the crop stubble, therefore ensuring high-quality forage in difficult conditions.



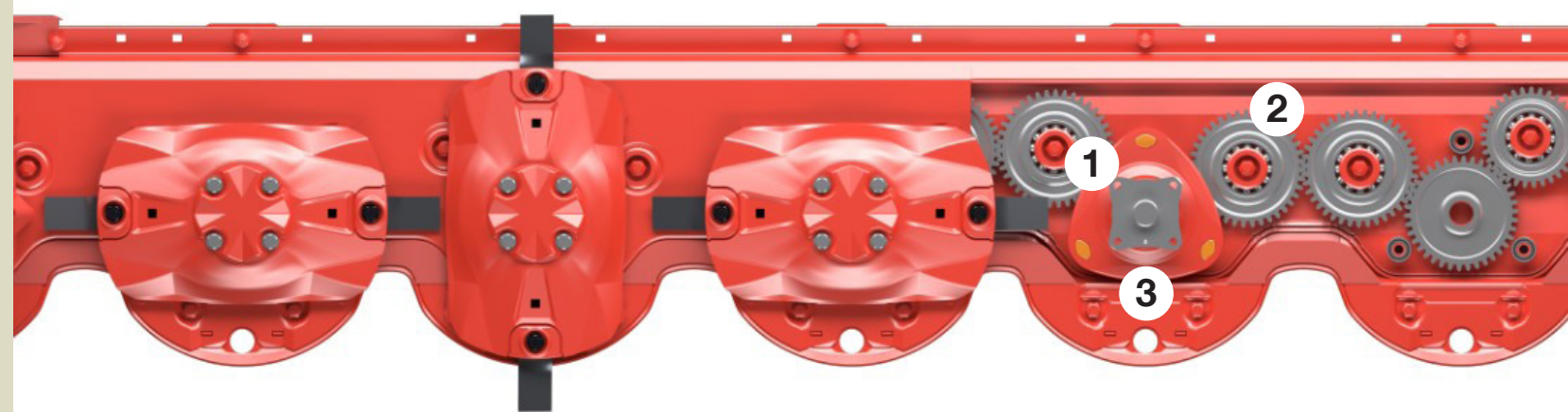
### FAST-FIT® KNIVES

Fast-Fit allows quick changing of knives with the use of a simple tool, while providing the optimum cut quality and knife life. The knives on the Optidisc Elite cutterbar rotate 360 degrees to help you achieve a higher quality cut. Fast-Fit knives also have a longer life. With Fast-Fit, you can achieve up to 50% time savings.



### DISC SKIDS, WEAR PLATES AND LINERS

The disc skid, wear plate and liner are designed to prevent soil and plant material from getting caught in the cutterbar. These plates protect the underside of the cutterbar in the area between disc skids extending the life of the machine while also reducing maintenance costs.



## HIGH-END COMPONENTS: STRENGTHEN THE HEART OF THE CUTTERBAR



The disc bearing stations are fitted with ① double-row angular ball bearings, ② large-diameter gears made of forged steel with high machining precision and cutterbar protection with the ③ Protectadrive® safety if an obstacle is struck in the field.



### ULTIMATE PROTECTION

Externally removable Protectadrive® disc bearing stations provide maximum reliability and quick service. They protect the cutterbar from damage if a major obstacle is struck in the field. The machined shaft guarantees a constant shear value to prevent nuisance shears or non-shearing, unlike others in the market.



### EXCLUSIVE

#### EXTRA RIGIDITY WHERE IT COUNTS

Disc bearing stations are attached by bolts that pass through the entire cutterbar. This is an exceptionally strong and secure attachment with no risk of a mount being torn out of the cutterbar in case of shocks. The disc drive pinion is held precisely in place, all resulting in excellent reliability and reduced maintenance costs.



### EXCLUSIVE

#### PATENTED ATTACHMENT OF CUTTERBAR TO CHASSIS

Shock absorbers are integrated in the connection between the cutterbar and chassis. They efficiently absorb shocks during work when driving quickly. This helps improve service life.



INVEST IN QUALITY®

## GENUINE KUHN PARTS®

No part better fits a KUHN machine than an original KUHN part

Here at KUHN, we produce spare parts built to last in our very own foundries, our forges and our ultra-modern production facilities. You can trust in our longstanding know-how, based on almost two centuries of experience. With KUHN Parts, you can be assured of the highest quality parts and customer service in the agriculture equipment industry. Seven distribution centers, located strategically throughout North America, ensure that KUHN, KUHN Knight and KUHN Krause dealers have access to parts and assistance so you can get back in the tractor.



# EASY ACCESS FOR SERVICING

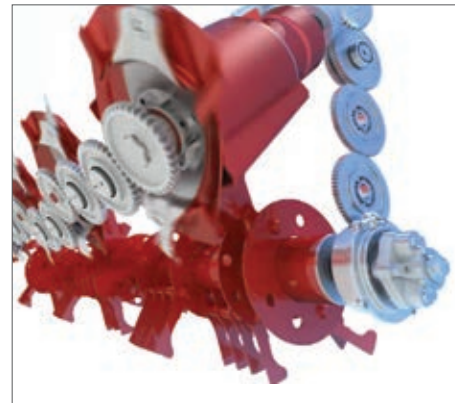


# UNIFORM CROP CONDITIONING



### DIRECT DRIVE DESIGN

The direct drive design to the conditioner provides easy access for servicing and fully eliminates belts. Reliability is greatly improved when working in longer crops such as ryegrass.



### BUILT-IN ROTOR PROTECTION

To help prevent damage to the DigiDry® conditioner gearbox in the unlikely event of an overload or ingestion of a large foreign object, the shear bolt hub allows the operator to clear the obstruction from the conditioner, quickly rotate the inner hub into position, install the new shear bolt and return to mowing.



### MAINTENANCE-FREE DRIVE SHAFT

Unlike competitive models that require daily greasing, the drive shaft to the cutterbar uses maintenance-free U-joints. These joints reduce overall maintenance and eliminate excessive wear from improper maintenance.



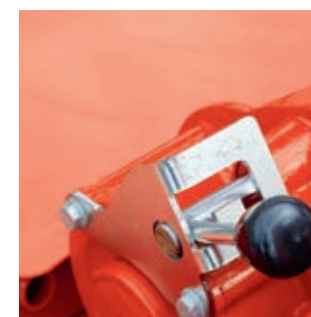
### DIGIDRY® FINGER CONDITIONER

The DigiDry finger conditioner provides consistent drying of grasses and legumes. The specially shaped fingers create a highly effective air dam, gently lifting the crop and directing it to impact with the conditioning hood. This design helps ensure consistent throughput for a uniform windrow.



### DIAMOND BLOCK® RUBBER ROLLER CONDITIONER

Diamond Block conditioning rollers stand out from the competition as the only rubber roller set designed exclusively for a disc mower. The horizontal staggered diamond pattern gives more points for the crop to be crimped as it flows off the disc at an angle.



### CONDITIONING ADJUSTMENTS

Easily adjust between two rotor speeds, 755 or 1,000 rpm, via a handle on each unit. Single-point speed adjustment adapts conditioning intensity to differing crop types and volumes. Conditioning hood adjustment is also very simple as it is at one single point per head.



# MODERN STYLE MEETS GREAT PERFORMANCE

The new KUHN front mowers and mower conditioners features many new functional characteristics:

- Special frame designed for unmatched ground adaptation
- Maintenance-free Optidisc® Elite cutterbar for optimum cutting
- Protectadrive® safety and Fast-Fit® knife system
- Hydropneumatic Lift-Control suspension of the mowing unit
- Easy adjustments for increased user comfort
- DigiDry® Conditioner rotor with pivoting steel fingers
- Diamond Block® rubber roller conditioning system

## EXCLUSIVE

### A NEW SLEEK LOOK

The new KUHN front mowers feature an attractive, functionally designed headstock. The compact frame, shaped like a hammerhead shark, offers improved visibility for the operator. It

also subtly integrates the suspension unit, which is responsible for exceptional following of ground contours. The two support arms are positioned apart from one another, ensuring mower stability.



### EXCEPTIONAL TERRAIN FOLLOWERS

Front mowing units have to remain flexible enough to smoothly adapt to all terrain changes they may encounter. At the same time they are often subject to higher stress. The KUHN front mowers are designed for this purpose, featuring a pendulum-type articulation of the mowing unit and significant adaptability characteristics. They can oscillate left to right at an angle of up to 30° and cover a vertical travel range of 27.5" (70 cm).

### CONVERGING DRUMS

The converging drums allow for smooth swath formation and for crop to be made narrow enough to prevent tractor tire run-over. Drums are powered via shafts with our exclusive DigiDrive® power coupler to ensure full power in all mowing conditions (*GMD Models Only*).



MOWING POSITION



### PERFECT AMOUNT OF OVERLAP

For a clean cut on slopes and bends, the overlap between the front and rear units can be adjusted hydraulically between 12" and 18" (depending on the model combination) – even while driving.



### FLEXPROTECT™: FLEXIBLE PROTECTION

On encountering an obstacle, the KUHN FlexProtect side covers made of polyethylene bend without breaking or damaging the mower. After the obstacle's passage, the material automatically returns back to its original shape.



**GMD 30 SERIES**

# SIMPLE TO USE AND EASY ON FUEL CONSUMPTION

High productivity with minimal power needed: This is the main characteristic of this triple combination. With a selectable cutting width of 27'2" (8.3 m), 27'10" (8.5 m) or 28'10" (8.8 m) when combined with the front mower, the GMD 8730 can more than double the productivity of traditional mounted or trailed disc mowers. Weighing less than 4,190 lbs (1,900 kg), it can be used (in combination with a GMD 3125 F) with tractors starting at as little as 120 hp (90 kW). With the lift control hydropneumatic mowing unit suspension along with non-stop break-away protection and the maintenance-free Optidisc® Elite cutterbar, the GMD 8730 features proven solutions for increased comfort and savings.



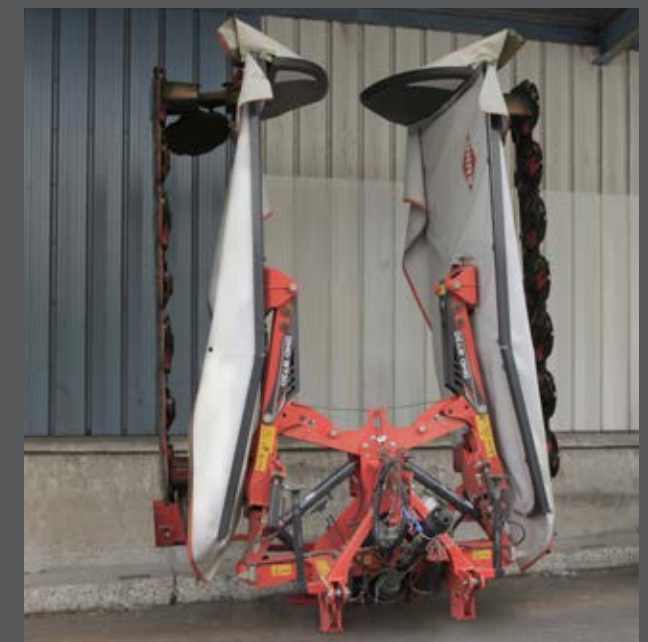
## INDIVIDUAL LIFTS FOR MOWING UNITS COME STANDARD

When working, you only have to handle one valve to lift the front-mounted mowing unit and one for the rear units. The possibility of lifting both rear mowing units individually is a big advantage on wedge-shaped fields and allows quick and easy maneuvers.



## THREE OVERLAP SETTINGS TO MEET YOUR NEEDS

Adjustment of the cutterbar position on each mowing head allows the operator to match the mowing width to the working conditions. This provides ample overlap to prevent skipping crop when mowing on steep hillsides or turning corners. The machine is compatible with the GMD 3125 F or 3525 F. With the GMD 3525 F, maximum width can be selected, regardless of the terrain.



## SPACE-SAVING STORAGE

Keep precious machine space open with the standard vertical storage feature.



GMD 30 SERIES FC 30 SERIES

# TRIPLE THE EFFICIENCY

The race for high output is never ending. Farms have increasingly larger areas to harvest, optimal mowing periods are limited and producing top quality forage is essential. In these highly stressful times, producers count on reliable and efficient mowers that cut cleanly and help produce high quality forage without impurities.



## SEPARATE HYDRAULIC LIFTING OF UNITS

The possibility of lifting both rear mowing units individually via hydraulic cylinders is a big advantage on wedge-shaped fields and permits quick and easy maneuvers. This can be done directly from the cab. At the same time the system ensures a reduced ground pressure: beneficial to plant regrowth, cutterbar wear and power requirements.



## TRANSPORT WITH EASE

Transporting a triple combination in an upward folded position leaves it closer to the tractor and allows the machine to have:

- Compact dimensions on the road
- A center of gravity close to the tractor
- A reduced load on the rear tractor axle



## PRACTICAL STORAGE POSITION

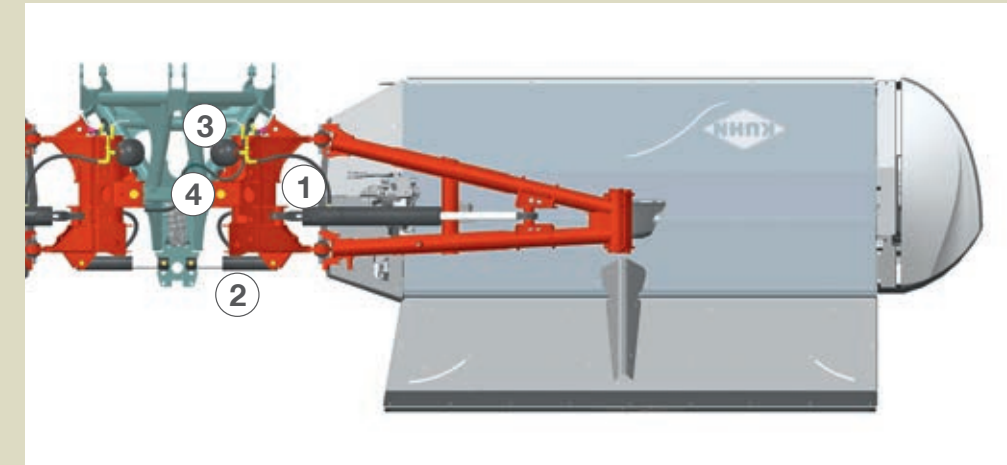
Two parking stands are delivered as standard with the machine. They enable you to park the machine in a folded position, which considerably saves storage space.



# QUALITY CUT. EVERY DAY. EVERY CROP.



## KUHN'S KEY FOR A CLEAN CROP: LIFT-CONTROL



### CLEVER, YET SIMPLE DESIGN

Lift-Control is much more than just a suspension system with a nitrogen accumulator replacing the traditional spring. The main advantage of the Lift-Control system is derived from the exclusive way in which kinetic forces acting on the cutterbar are utilized. KUHN engineers have succeeded in making a dynamic suspension system as opposed to the passive system most commonly used.

### THE FEATURES AND BENEFITS OF LIFT-CONTROL

The particular kinematics of KUHN triple mowers integrate a suspension cylinder for lightening the mowing unit (1) a breakaway cylinder (2) an accumulator with adjustable pressure (3) and a pivot axis well positioned and close to the machine center. (4) The appropriate suspension adjustment limits mixing impurities in the crop and reduces the cutterbar ground pressure: less fuel consumption, skid wear and crop stubble protection.

## Active Non-Stop Safety Breakaway



### SIDE COVER DAMAGE – A THING OF THE PAST

On encountering an obstacle, the KUHN FlexProtect side covers made of polyethylene material bend without breaking or damaging the mower. The material then returns back to its original shape. They fold automatically without having to use an additional tractor valve.



### COMFORTABLE ADJUSTMENTS FROM THE CAB

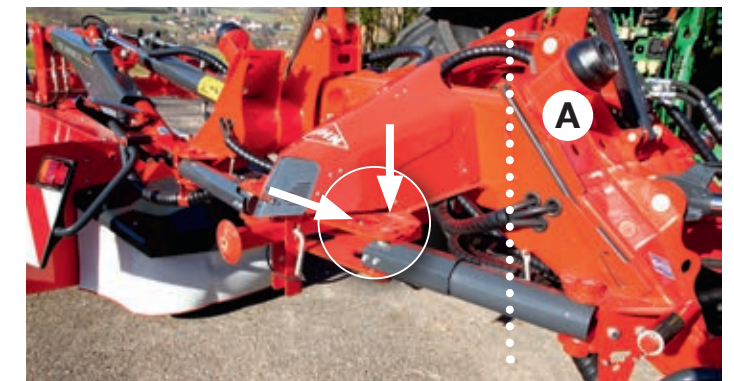
The KFA11 terminal facilitates machine adjustments. The following functions can be comfortably controlled from the cab:

- Folding/unfolding
- Independent lifting of the mowing units
- Ground pressure of rear mowing units



### MOW WITH YOUR MIND AT EASE!

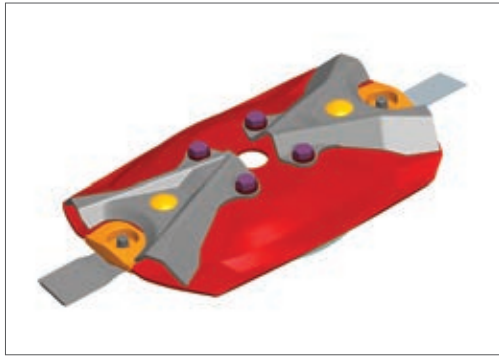
No farmer can afford to damage their mower during the peak of the season because of an unnoticed obstacle or maneuvering error. On the rear units, the mowing unit pivots rearward around the bracing pin when hitting an obstacle. In this moment, oil is transferred towards the suspension cylinder. The resulting pressure increase causes the mowing unit to raise and clear the obstruction. Return to the initial working position happens automatically after the obstruction is past.



### PROTECTING YOUR INVESTMENT

- The safety system remains efficient even if an obstacle hits the inner disc of the mowing unit, as the pivoting point of the frame arm (A) is positioned far inside.
- An independent suspension on each mowing unit prevents the opposite mowing unit from being accelerated forward when the other side clears the obstacle.
- The hydraulic breakaway can be adjusted depending on the cutting conditions. The cylinder can be connected in one of two positions (arrows): The second position increases the force required for the breakaway especially when working at a high speed in rough conditions.

# OPTIONAL EQUIPMENT



**CROP LIFTER**  
Recommended for sorghum or other hard feeding crops.



**WORK LIGHTS (FRONT MOUNT MODELS ONLY)**  
For added light when mowing at night.



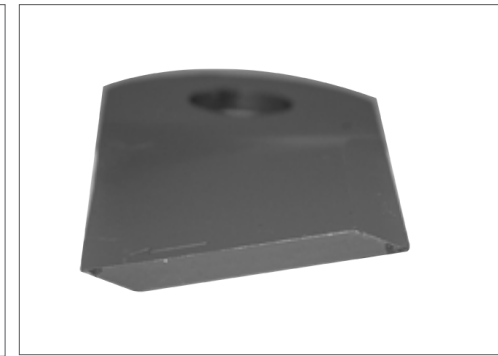
**FRONT HYDRAULIC FOLDING FLEXPROTECT™ SIDE SHIELDS**  
FlexProtect™ side shields protect the edges of the machine from damage when driving along field edges or near obstacles. The side shields will flex and form back into their original position. This option requires one extra set of dual-acting hydraulic valves on the front of the tractor.

## Model Specifications

	FC 3125 DF	FC 3525 DF	FC 3525 RF	FC 8830 D	FC 10030 D	FC 10030 R
Working width	10'2" (3.1 m)	11'6" (3.5 m)		27'3" (8.3 m) - 28'7" (8.7 m) in combination with a 10'2" (3.1 m) front mower	31'2" (9.5 m) - 32'6" (9.9 m) in combination with a 10'2" (3.1 m) front mower	
Overlap with a front mower		-		1' - 1'8" (30 - 50 cm) with a 10'2" (3.1 m) front mower		
Transport width	9'10" (3.0 m)	11'5" (3.5 m)		9'8" (2.95 m)	11' (3.35 m)	
Transport height		6'7" (2.0 m)		11'10" (3.60 m)	13'1" (4.00 m)	
Cutterbar	Optidisc® Elite					
Number of discs	7	8		2 x 7	2 x 8	
Number of flat discs	5	6		2 x 5	2 x 6	
Blade retention system	Fast-Fit®					
Cutting height	1.4" - 2.6" (35 - 65 mm)					
Removable Protectadrive® disc bearing stations	Standard					
Suspension	Lift-Control® hydropneumatic with torsion bar assist			Lift-Control® hydropneumatic		
Safety breakaway system	Pro-Active Lift®			Non-stop hydraulic		
Conditioning system	DigiDry® steel finger	Diamond Block® rubber roller		DigiDry® steel finger	Diamond Block® rubber roller	
Conditioning speed	755 or 1,000 rpm	780 rpm		755 or 1,000 rpm	800 rpm	
Conditioner width	8'1" (2.46 m)			11'1" (282 cm)		
Swath width	3'11" - 6'7" (1.2 - 2.0 m)	4'7" - 6'7" (1.4 - 2.0 m)		4'9" - 6'11" (1.45 - 2.1 m) per cutterhead	6'1" - 7'10" (1.85 - 2.4 m) per cutterhead	
Suspension - travel	Vertical travel 27.5" (70.1 cm) Oscillation 30°			18.5" (47 cm)		
Wide spread - max	-			8' (2.44 m)	10'4" (3.15 m)	
Hitch	Cat. 2, 3-point			3-point Cat. 3 Quick hitch compatible (4N with optional bracket)		
PTO speed	1,000 rpm					
Primary PTO	CW or CCW 1-3/8" - 21-spline - CV (Ideal for tractors that have a front PTO shaft whose center is less than 2' (0.6 m) from the ground. As an example all JD 8R series tractors.)			1-3/4" - 20-spline		
Free wheel	Standard, integrated into lateral gearbox					
Friction slip clutch	Standard					
Minimum PTO power requirement	95 hp (71 kW)	105 hp (78 kW)		225 hp (168 kW)	250 hp (186 kW)	
Required tractor hydraulic connections	1 SA with float			2 DA		
Control box	-			Standard		
Road lights and signaling	Standard					
Machine weight approx.	2,910 lbs (1,320 kg)	3,064 lbs (1,390 kg)	3,207 lbs (1,455 kg)	6,680 lbs (3,030 kg)	7,190 lbs (3,261 kg)	7,450 lbs (3,380 kg)



**HD KNIVES**  
Available from KUHN Parts, the HD knives provide increased longevity and durability when mowing in difficult conditions.  
**Knives must be used with HD retaining studs and nuts.**



**RAISED SKID SHOES**  
For customers requiring a higher cut height for certain crops or when cutting in rocky conditions.

## Model Specifications

	GMD 3125 F	GMD 3525 F	GMD 8730	GMD 10030
Working width	10'2" (3.1 m)	11'6" (3.5 m)	27'2" (8.3 m) - 27'10" (8.5 m) - 28'10" (8.8 m) in combination with a 10'2" (3.1 m) front mower (depending on overlap chosen)	31'2" (9.5 m) - 32'6" (9.9 m) in combination with a 11'6" (3.5 m) front mower
Transport width	9'10" (2.99 m)	11'5" (3.48 m)	9'9" (2.9 m)	11' (3.35 m)
Transport height	6'7" (2.0 m)		11'6" (3.5 m) - 11'10" (3.6 m) - 12'3" (3.8 m) depending on the overlap chosen	13'1" (4.0 m)
Overlap with a front mower	-		1'9" (54 cm) - 1'5" (44 cm) - 11" (54 cm) with front unit of 10'2" (3.1 m)	1' (30 cm) - 1'8" (50 cm) in combination with a 11'6" (3.5 m) front mower
Cutterbar	Optidisc® Elite			
Number of discs	7	8	2 x 7	2 x 8
Number of flat discs	5	6	2 x 5	2 x 6
Blade retention system	Fast-Fit®			
Removable Protectadrive® disc bearing stations	Standard			
Hydraulic lift mechanism	Standard			
Cutterbar suspension	Lift-Control® hydropneumatic with torsion bar assist		Lift-Control® hydropneumatic	
Cutting height	1.4" - 2.6" (35 - 65 mm)			
Suspension travel	Vertical travel 27.5" (70.1 cm), Oscillation 30°		18.5" (47 cm)	
Safety breakaway system	Pro-Active Lift®		Non-stop hydraulic standard	
Headland turn position	Integrated hydraulics			
Average swath width	3'3" - 4'11" (1.2 - 1.5 m)		6'6" (2 m) to 7'9" (2.4 m) per cutterhead	9'2" (2.79 m) per cutterhead
Swathing system	Belt driven drums (1 per side)		Swath board	
Swath wheel	-		Outside	
Hitch	Cat. 2, 3-point front mounted		3-point, Cat. 2 (not quick hitch compatible)	3-point Cat. 3 Quick hitch compatible (4N with optional bracket)
Primary PTO	CW or CCW 1 3/8" - 21-spline front CV PTO shaft (ideal for tractors that have a front PTO shaft whose center is less than 2' (0.6 m) from the ground. As an example all JD 8R series tractors.)		1 3/4" - 20 spline	
PTO speed	1,000 rpm			
Friction slip clutch	Standard			
Free wheel	Standard, integrated into lateral gearbox			
Minimum PTO power requirement	75 hp (56 kW)	85 hp (63 kW)	120 hp (90 kW) with front mount included	140 hp (104 kW)
Control box	-		Standard	
Required tractor hydraulic connections	1 SA with float		1 SA and 1 DA	2 DA
Road lights and signaling	Standard			
Machine weight approx.	2,435 lbs (1,105 kg)	2,600 lbs (1,180 kg)	4,190 lbs (1,900 kg)	5,200 lbs (2,360 kg)

# COMPLEMENTARY PRODUCTS

## MORE PRODUCTS TO MEET YOUR NEEDS

With over 700 models of equipment, we have the most complete implement line in the industry. Whether you have a small or large operation, we have a broad range of models and options to help fit your diverse needs.



1. Tedders
2. Mergers
3. Round Balers
4. Large Square Balers
5. TMR Mixers
6. Manure Spreaders

For more information about your nearest KUHN dealer and other KUHN products, visit our website at

[www.kuhn.com](http://www.kuhn.com)



Visit our YouTube channel to watch our latest product videos.



Your KUHN dealer

### KUHN NORTH AMERICA, INC.

Corporate Headquarters  
1501 West Seventh Avenue - Brodhead, WI 53520

Information given in this document is only for informational purposes and is non-contractual. Our machines are in compliance with North American safety standards. In our literature, and for improved illustration of certain details, some safety devices may not be in operating position. When operating these machines, these devices must be operated in accordance with the requirements indicated in the operator's manuals and assembly manuals. We reserve the right to change any designs, specifications or materials listed without further notice. Machines and equipment in this document can be covered by at least one patent and/or registered design. Trademarks cited in this document may be registered in one or several countries.

Find us on

