

# 2019 EXPEDITION® XTREME

## PACKAGE HIGHLIGHTS

- Rotax® 800R E-TEC® engine
- RAS™ 2 front suspension
- REV-XU™ platform
- SC™-5U articulating rear suspension
- Locking mechanism on one side (no tool required) for articulated suspension
- KYB® Pro 36 aluminum piggyback rear shock with Easy-Adjust compression adjusters (22 clicks)
- HPG™ Plus R front shocks with rebound adjuster
- 20 x 154 x 1.75 in. track
- Adjustable ski stance
- RF D.E.S.S.™ key
- Stiff grab handle on handlebar
- Multifunction digital gauge with engine temperature gauge
- Electric start
- Synchromesh transmission with reverse (2-1-N-R)
- Air radiator with fan
- Rack & Hitch



EXPEDITION® XTREME 800R E-TEC® shown

## ROTAX® ENGINE

### 800R E-TEC®

Engine details	Liquid-cooled, 3-D R.A.V.E.™
Cylinders	2
Displacement	799.5 cc / 48.8 in. <sup>3</sup>
Bore	82 mm / 3.2 in.
Stroke	75.7 mm / 3 in.
Maximum engine speed	7,900 RPM
Carburation	E-TEC direct injection
Recommended fuel type	Premium unleaded
Minimum octane	91
Fuel tank	45 L / 12 US gal
Oil tank capacity	3.7 L / 3.9 qt

## POWERTRAIN

Drive clutch type	TRA™ VII
Driven clutch type	QRS
Engagement	3,800 RPM
Small sprocket number of teeth	1st gear = 3.23:1 ratio
Large sprocket number of teeth	2nd gear = 1.98:1 ratio
Drive sprocket number of teeth	8
Drive sprocket diameter	183 mm / 7.2 in.
Brake system	Brembo racing brake with stainless-steel braided brake line

## DRY WEIGHT

283 kg / 625 lb

## COLOR

Black 

## DIMENSIONS

Vehicle overall length	3,370 mm / 132.7 in.
Vehicle overall width	1,140 to 1,180 mm / 44.9 to 46.5 in.
Vehicle overall height	1,220 mm / 48 in.
Ski stance	975 or 1,020 mm / 38.4 or 40.2 in.
Ski overall length	1,049 mm / 41.3 in.
Track nominal width	500 mm / 20 in.
Track nominal length	3,923 mm / 154 in.
Track profile height	44.5 mm / 1.75 in.

## SUSPENSION

Front suspension	RAS™ 2
Front shock	HPG™ Plus R
Front suspension max. travel	210 mm / 8.3 in.
Rear suspension	SC™-5U
Center shock	HPG™ Plus
Rear shock	KYB® Pro 36 Easy-Adjust
Rear suspension max. travel	239 mm / 9.4 in.

## FEATURES

Frame	REV-XU™	Starter	Electric	Mirrors	Optional
Skis	Pilot™ DS 2	Reverse	Mechanical	Windshield	360 mm / 14 in.
Seating	1-up modular	Heated throttle lever	Standard	Runner	Square 3/8
Handlebar	Aluminum, tapered with J-hooks / Grab handle	Heated grips	Standard	Carbide configuration	102 mm / 4 in. at 90°
Riser block height	205 mm / 8.1 in.	Gauge	Multifunction	Hitch	Tongue Type

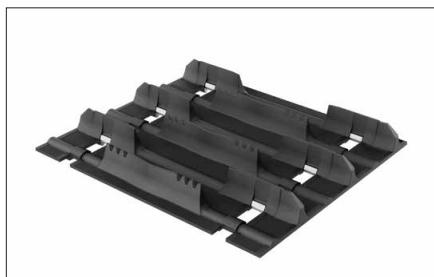


EXPEDITION® XTREME 800R E-TEC® shown



EXPEDITION® XTREME 800R E-TEC® shown

## FEATURE HIGHLIGHTS



### 20 x 154 x 1.75 in. track

Incredible flotation and pulling capability with 1.75 in. (4.4 cm) lugs.



### SC™-5U articulating rear suspension

Features settings that maximize deep snow traction in reverse or lock out for towing.



### Synchromesh transmission with reverse (2-1-N-R)

Take off from a stop smoothly, even with a heavy load, thanks to two forward and one reverse gears. Inline 2-1-N-R pattern on right side and can be safely shifted while on the fly.



### RAS™ 2 front suspension

A taller ski spindle, refined geometry and lighter components sharpen the sled's already precise handling and stability, especially in extreme conditions.



### Multifunction gauge with LCD screen

### GAUGE FEATURES

Speedometer	Standard
Tachometer	Standard
Fuel	Standard
Engine temperature	Standard