

www.HLASNOW.com

HLA SNOW



HLA SNOW



www.hlasnow.com



INDEX

1000 & 2000 Series - Features and Options	4
1000 & 2000 Series - Models	6
3000 Series - Features and Options	8
3000 Series - Models	10
4000 Series - Features and Options	12
4000 Series - Models	14
5000 Series - Features and Options	16
5000 Series - Models	18
6000 Series - Features and Options	20
6000 Series - Models	22
Edge Flex	23
SnowWing.	24
Razor SnowPusher.	26
Scatter Shot	28
6-Way	30
V-Blade	31
Snow Basket & Snow Bucket	31
Quick Attach Snow Blade Mounts	32
Undercarriage Mount for Older Tractors	34
Specifications	36



Fendt 514 with the
HLA 4203W Series SnowWing with Edge Flex



Case IH DX31 with
the HLA 2000 Series SnowBlade
on direct mount

FEATURES



Replaceable, Reversible Cutting Edge

Our cutting edges are designed to be easily replaceable and are reversible to give you twice the life.



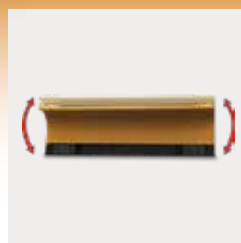
Adjustable Skid Shoes

Allow you to set cutting depth for optimum performance and prolonged cutting edge life.



Mouldboard Profile

Precision engineered curve rolls and folds snow. This reduces sticking, side tracking and spill over.



Lateral Float

Allows blade to follow ground contours for better clearing performance. (Optional on 1500 and 2500 Series SnowPushers)



Spring trip Mouldboard Blade

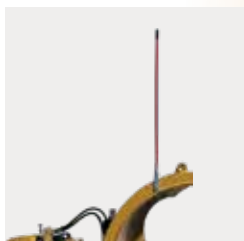
Allows blade to trip back if struck by hidden object limiting damage.

1000 & 2000 SERIES



HLA 2500 Series SnowPusher

OPTIONS



Snowblade Marker

Add this to your blade for better visibility and blade position awareness.



Back Drag

Equipped with a steel edge on the back drag, this option is ideal for back dragging away from doors and loading docks for an even cleaner finish.

Available on 1500 and 2500 Series SnowPushers only.



Curb Runner

Optional on the 2000 Series SnowBlade, the Curb Runner runs along the front face of the curb, preventing the edge of the blade from catching on any edges.



Rubber Cutting Edge

Standard on the 2500 Series SnowPusher, the rubber cutting edge is more gentle on your cleared area.



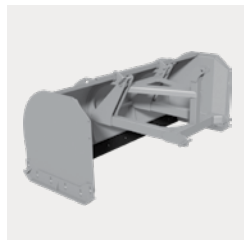
Boron Cutting Edges

Boron long wearing reversible upgrades provide excellent cutting performance for use in mixed gravel, concrete and asphalt situations.



TURF Pusher Kit

Optional on both the 1500 and 2500 Series SnowPusher, this bolt-on option is ideal for clearing snow from sports fields using artificial turf.



Rear 3PH Mount

Optional for 2500 Series SnowPusher. Ideal for cleaning away doors and loading docks. Utilize your pusher as a pull unit.



Poly Bolt-On Runner

Optional on 1500, 1800, and 2500 Series SnowPushers.

1000 & 2000 SERIES



**MAX OPERATING WEIGHT: 3,000 lbs.
20 - 40 HORSEPOWER**

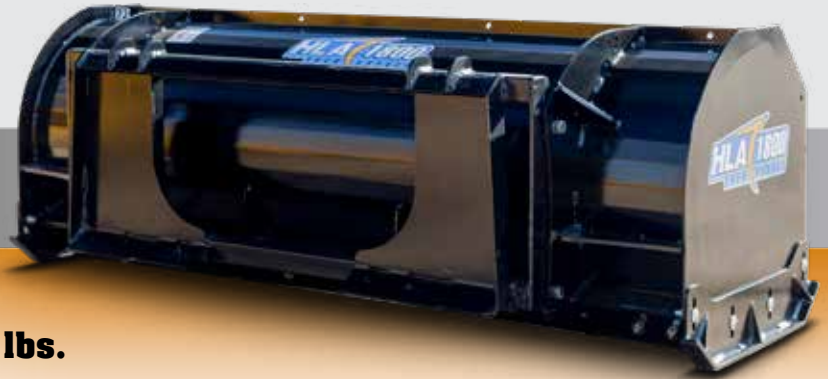
- 35° manual angle either direction (hydraulic optional)
- Q-tach or direct fit to accept most makes of loaders
- Replaceable, Reversible steel cutting edge
- Replaceable, Reversible rubber cutting edge (OPTIONAL)
- Spring trip mouldboard
- High Tensile AR400 Skid Shoes
- Lateral Float
- Clearing width approx. 1.5' narrower when angled
- 42" - 96" Widths
- 20" High mouldboard



MAX OPERATING WEIGHT: 3,000 lbs.

- Replaceable, Reversible steel cutting edge
- Double sidewall eliminates bulky brace
- Slim brace design for reduced material build-up
- High tensile AR400 adjustable steel skidbars
- 18" Deep fixed endplates
- 54" - 72" Widths
- 20" High mouldboard





MAX OPERATING WEIGHT: 4,000 lbs.

- Replaceable, Reversible steel cutting edge
- Double sidewall eliminates bulky brace
- Slim brace design for reduced material build-up
- High tensile AR400 adjustable steel skidbars
- 21" Deep fixed endplates
- 60" - 84" Widths
- 24" High mouldboard



MAX OPERATING WEIGHT: 5,000 lbs. 30 - 50 HORSEPOWER

- Hydraulic 35° angle either direction
- Q-tach or direct fit to accept most makes of loaders
- Replaceable, Reversible steel cutting edge
- Replaceable, Reversible rubber cutting edge (OPTIONAL)
- Spring trip mouldboard
- High Tensile AR400 Skid Shoes
- Lateral Float
- Clearing width approx. 1.5' narrower when angled
- 60" - 96" Widths
- 24" High mouldboard



MAX OPERATING WEIGHT: 6,000 lbs.

- 1-1/2" x 6" Dura-blade rubber edge (mounted fixed)
- Double sidewall eliminates bulky brace
- High tensile AR400 adjustable steel skidbars
- 30" Deep fixed endplates
- 72" - 96" Widths
- 30" High mouldboard



2 Year Commercial Warranty

Designed for harsh conditions, HLA Snow backs its 3000 Series blades with a 2 Year Commercial Warranty.



Kubota L6060 with the HLA 3000 Series SnowBlade

FEATURES



Replaceable, Reversible Cutting Edge

Our cutting edges are designed to be easily replaceable and are reversible to give you twice the life.



Adjustable Skid Shoes

Allow you to set cutting depth for optimum performance and prolonged cutting edge life.



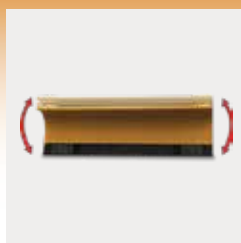
Mouldboard Profile

Precision engineered curve rolls and folds snow. This reduces sticking, side tracking and spill over.



Crossover Relief Valve

Provides protection against hidden obstacles by redirecting hydraulic pressure, swinging the blade around hazards.



Lateral Float

Allows blade to follow ground contours for better clearing performance. (Optional on 3500 and 3500X Series SnowPushers)



Spring Trip Cutting Edge

Allows blade to trip back if struck by hidden object limiting damage.



Floating End Plate Edge

(3230W Series SnowWing only)

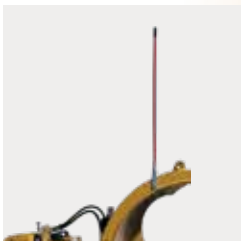
Floating endplate edges follow surface contour for confident snow clearing.

3000 SERIES



Case SV 300 with
the HLA 3230W Series SnowWing

OPTIONS



Snowblade Marker

Add this to your blade for better visibility and blade position awareness.



Carbide Tipped Cutting Edges

Carbide tipped edges are designed for heavy commercial use, this non reversible cutting edge is suited for heavy duty clearing on concrete or asphalt.



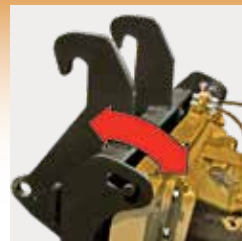
Spill Guard

Available on all 3000 Series SnowWings and Angle Blades.



Curb Runner

Optional on the 3000 Series SnowBlade and the 3230W Series SnowWing, the Curb Runner runs along the front face of the curb, preventing the edge of the blade or wing from catching on any edges.



Floating Blade Hinge

This option adds a mechanical float to the blade. This allows the blade to better follow the surface contour. The float is designed to be simply locked out when not needed by rolling the blade forward. (Available on 3000 Series SnowBlade & 3230W Series SnowWing only)



Back Drag

Equipped with a steel edge on the back drag, this option is ideal for back dragging away from doors and loading docks for an even cleaner finish.

Available on the 3500 Series SnowPusher only.



Rubber Cutting Edge

The optional 1-1/2"x6" rubber cutting edge is available for select models.



Poly Bolt-On Runner

Optional on 3500 Series SnowPusher.

3000 SERIES



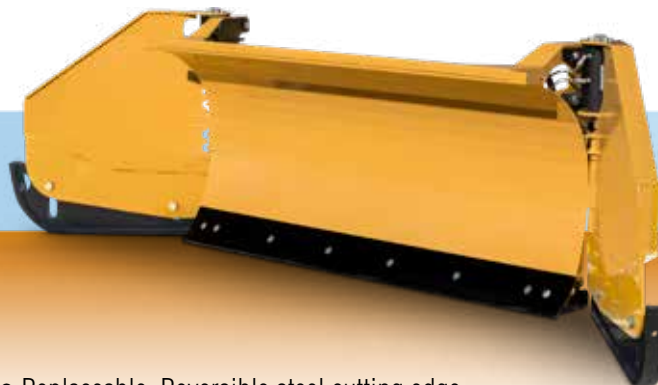
MAX OPERATING WEIGHT: 10,000 lbs.

- Hydraulic 35° angle either direction
- Crossover relief valve protection
- Q-tach or direct fit to accept most makes of loaders
- Replaceable, Reversible steel cutting edge
- Replaceable, Reversible rubber cutting edge (OPTIONAL)
- Spring trip cutting edge
- High Tensile AR400 Skid Shoes
- Lateral Float
- Clearing width approx. 1.5' narrower when angled
- 6' - 10' Widths
- 30" High mouldboard
- 2 Year Commercial Warranty
- **Available in Edge Flex models** (see pg. 23)



MAX OPERATING WEIGHT: 10,000 lbs.

- Double Electric Selector Valve. Allows the control of each wing to be operated independently. 12V or 24V coils available. Includes in-cab mount electro-hydraulic harness kit.
- 6' to 10' Main mouldboard widths
- Maximum clearing width 5' wider than main mouldboard width
- Minimum road transport width approx. 9" narrower than main mouldboard width
- Wings 30" deep/wide
- 30" High mouldboard
- 35° angle on main mouldboard
- Relief valve on main angle cylinders
- Q-tach or direct fit to accept most makes of loaders
- Replaceable, Reversible steel cutting edge
- Replaceable, Reversible rubber cutting edge (OPTIONAL - Currently not available on wings)
- Spring trip cutting edge on main mouldboard
- High tensile AR400 Skid Shoes
- Lateral float
- Relief valve on wings
- Floating edge on endplate
- Infinite wing adjustment from 0°-180°
- Actuator has 21,000 in-lb Torque at 3000 psi - Patented
- Tire Protection System - Patented
- 2 Year Commercial Warranty
- **Available in Edge Flex models** (see pg. 23)





MAX OPERATING WEIGHT: 15,000 lbs.

- Double sidewall eliminates bulky brace
- Replaceable, Reversible steel cutting edge
- Replaceable, Reversible rubber cutting edge (OPTIONAL)
- Spring trip cutting edge
- High tensile AR400 adjustable steel skidbars



Shown with opt. back drag.

- 36" Deep fixed endplates
- 7' - 12' Widths
- 38" High mouldboard
- 2 Year Commercial Warranty
- **Available in Edge Flex models** (see pg. 23)



MAX OPERATING WEIGHT: 15,000 lbs.

- Built in back drag
- Bolt-on attachment frame has 3 angle settings (90°, -10°, & +10°)
- Inner moldboard slides on support shaft
- Trip cutting edge
- Compression springs for trip - can be adjusted for tension
- 16" Deep
- 6' - 8' widths with 4' expansion



- 24" High mouldboard
- Fixed side skid shoes to assist in keeping blade level so that all cutting edges wear evenly
- Steel or rubber cutting edge options for top and bottom
- Hydraulics - flow divider valve
- 2 Year Commercial Warranty



MAX OPERATING WEIGHT: 10,000 lbs.

- Spring trip on cutting edge
- 30" high mould board
- Lateral float
- Reversible cutting edge
- Adjustable skid shoes
- Single Electric Selector Valve. Allows the control of each wing to be operated independently. 12V or 24V coils available. Includes in-cab mount electro-hydraulic harness kit.



- Cross over relief valve protection
- 6' - 10' main mouldboard widths
- Maximum clearing width 5' wider than main mould board width
- Wings 30" deep/wide
- 2 Year Commercial Warranty
- Infinite wing adjustment from 0° - 180°
- Actuator has 21,000 in-lb Torque at 3000 psi - Patented
- **Available in Edge Flex models** (see pg. 23)



New Holland T6.165 with the HLA 4203W Series SnowWing



2 Year Commercial Warranty

Designed for harsh conditions, HLA Snow backs its 4000 Series blades with a 2 Year Commercial Warranty.

FEATURES



Replaceable, Reversible Cutting Edge

Our cutting edges are designed to be easily replaceable and are reversible to give you twice the life.



Skid Shoes

AR400 high tensile Skid Shoes for optimum performance and prolonged cutting edge life.



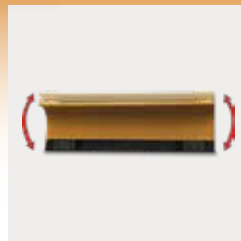
Mouldboard Profile

Precision engineered curve rolls and folds snow. This reduces sticking, side tracking and spill over.



Crossover Relief Valve

Provides protection against hidden obstacles by redirecting hydraulic pressure, swinging the blade around hazards.



Lateral Float

Allows blade to follow ground contours for better clearing performance. (Optional on 4500 Series SnowPusher)



Spring Trip Cutting Edge

Allows blade to trip back if struck by hidden object limiting damage.



Floating End Plate Edges

(SnowWing Only)

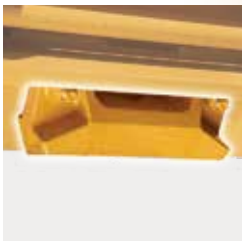
Floating endplate edges follow the surface contour for confident snow clearing.



4000 SERIES

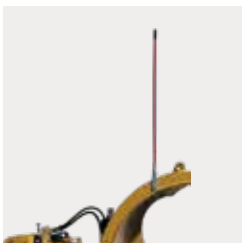
CAT 420D Loader Backhoe with
the HLA 4000 Series SnowBlade

OPTIONS



High Tensile Long Wear Skid Shoes

For heavy use situations we suggest our high tensile steel, long wear Skid Shoes. These provide excellent longevity and performance suited for heavy duty clearing on concrete or asphalt.



Snowblade Marker

Add this to your blade for better visibility and blade position awareness.



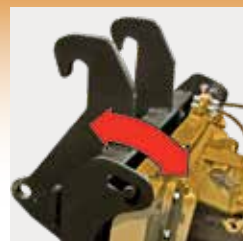
Carbide Tipped Cutting Edges

Carbide tipped edges are designed for heavy commercial use, this non reversible cutting edge is suited for heavy duty clearing on concrete or asphalt.



Curb Runner

Optional on the 4000 Series SnowBlade and the 4203W & 4205W Series SnowWing, the Curb Runner runs along the front face of the curb, preventing the edge of the blade or wing from catching on any edges.



Floating Blade Hinge

This option adds a mechanical float to the blade. This allows the blade to better follow the surface contour. The float is designed to be simply locked out when not needed by rolling the blade forward. (Not available on 4500 Series SnowPusher)



Back Drag

Equipped with a steel edge on the back drag, this option is ideal for back dragging away from doors and loading docks for an even cleaner finish.

Available on 4500 Series SnowPushers only.



Spill Guard (Optional)

Available on all 4000 Series SnowWings and Angle Blades.



Rubber Cutting Edge

The optional 1-1/2"x8" rubber cutting edge is available for select models. Sizing may not be exactly as shown.

4000 SERIES



MAX OPERATING WEIGHT: 25,000 lbs.

- Hydraulic 35° angle either direction
- Crossover relief valve protection
- Q-tach or direct fit to accept most makes of loaders
- Replaceable, Reversible steel cutting edge
- Replaceable, Reversible rubber cutting edge (OPTIONAL)
- Spring trip cutting edge
- High Tensile AR400 Skid Shoes
- Lateral Float
- Clearing width approx. 1.5' narrower when angled
- 9' - 14' Widths
- 34" High mouldboard
- 2 Year Commercial Warranty
- **Available in Edge Flex models** (see pg. 23)



MAX OPERATING WEIGHT: 25,000 lbs.

- Double Electric Selector Valve. Allows the control of each wing to be operated independently. 12V or 24V coils available. Includes in-cab mount electro-hydraulic harness kit.
- 8' to 14' Main mouldboard widths
- Maximum clearing width 6' wider than main mouldboard width
- Minimum road transport width approx. 9" narrower than main mouldboard width
- Wings 36" deep/wide
- 34" High mouldboard
- 35° angle on main mouldboard
- Relief valve on main angle cylinders
- Q-tach or direct fit to accept most makes of loaders
- Replaceable, Reversible steel cutting edge
- Replaceable, Reversible rubber cutting edge (OPTIONAL - Currently not available on wings)
- Spring trip cutting edge on main mouldboard
- High tensile AR400 Skid Shoes
- Lateral float
- Relief valve on wings
- Floating edge on endplate
- Infinite wing adjustment from 0°-180°
- Actuator has 38,720 in-lb Torque at 3000 psi - Patented
- Tire Protection System - Patented
- Nitrate rods on angle cylinders
- 2 Year Commercial Warranty
- **Available in Edge Flex models** (see pg. 23)



SNOW WING

4205W



MAX OPERATING WEIGHT: 25,000 lbs.

- Double Electric Selector Valve. Allows the control of each wing to be operated independently. 12V or 24V coils available. Includes in-cab mount electro-hydraulic harness kit.
- 8' to 14' Main mouldboard widths
- Maximum clearing width 10' wider than main mouldboard width
- Minimum road transport width approx. 9" narrower than main mouldboard width
- Wings 60" deep/wide
- 34" High mouldboard
- 35° angle on main mouldboard
- Relief valve on main angle cylinders
- Q-tach or direct fit to accept most makes of loaders
- Replaceable, Reversible steel cutting edge
- Replaceable, Reversible rubber cutting edge (OPTIONAL - Currently not available on wings)
- Spring trip cutting edge on main mouldboard
- High tensile AR400 Skid Shoes
- Lateral float
- Relief valve on wings
- Floating edge on endplate
- Infinite wing adjustment from 0°-180°
- Actuator has 54,200 in. lb. Torque at 3000 psi - Patented
- Tire Protection System - Patented
- Great for large sites where greater clearing width is required while being able to narrow down for smaller areas
- Comes with removable top sections on wings to allow for clearance under 5th wheel pins on trailers
- Nitrate rods on angle cylinders
- 2 Year Commercial Warranty
- **Available in Edge Flex models** (see pg. 23)

HLA 4500

SNOW PUSHER



MAX OPERATING WEIGHT: 25,000 lbs.

- Replaceable, Reversible steel cutting edge
- Replaceable, Reversible rubber cutting edge (OPTIONAL)
- Spring trip cutting edge
- Bucket edge mount or Q-tach available
- 36" Deep fixed endplates
- 10' - 14' Widths
- 34" High mouldboard
- 2 Year Commercial Warranty
- **Available in Edge Flex models** (see pg. 23)

Case 721F with
the HLA 5203W
Series SnowWing



2 Year Commercial Warranty

Designed for harsh conditions, HLA Snow backs its 5000 Series blades with a 2 Year Commercial Warranty.

FEATURES



Replaceable, Reversible Cutting Edge

Our cutting edges are designed to be easily replaceable and are reversible to give you twice the life.



Skid Shoes

AR400 high tensile Skid Shoes for optimum performance and prolonged cutting edge life.



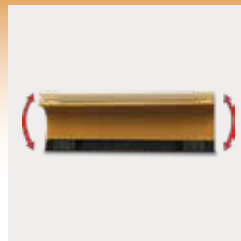
Mouldboard Profile

Precision engineered curve rolls and folds snow. This reduces sticking, side tracking and spill over.



Crossover Relief Valve

Provides protection against hidden obstacles by redirecting hydraulic pressure, swinging the blade around hazards.



Lateral Float

Allows blade to follow ground contours for better clearing performance. (Optional on 5500 Series SnowPusher)



Spring Trip Cutting Edge

Allows blade to trip back if struck by hidden object limiting damage.



Floating End Plate Edges

(SnowWing Only)

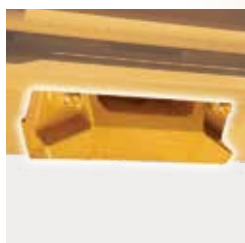
Floating endplate edges follow the surface contour for confident snow clearing.



5000 SERIES

Volvo L70G with
the HLA 5205W Series SnowWing

OPTIONS



High Tensile Long Wear Skid Shoes

For heavy use situations we suggest our high tensile steel, long wear Skid Shoes. These provide excellent longevity and performance suited for heavy duty clearing on concrete or asphalt.



Snowblade Marker

Add this to your blade for better visibility and blade position awareness.



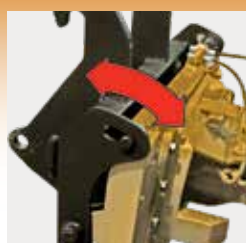
Carbide Tipped Cutting Edges

Carbide tipped edges are designed for heavy commercial use, this non reversible cutting edge is suited for heavy duty clearing on concrete or asphalt.



Curb Runner

Optional on the 5000 Series SnowBlade and the 5203W & 5205W Series SnowWings, the Curb Runner runs along the front face of the curb, preventing the edge of the blade or wing from catching on any edges.



Floating Blade Hinge

This option adds a mechanical float to the blade. This allows the blade to better follow the surface contour. The float is designed to be simply locked out when not needed by rolling the blade forward. (Not available on 5500 Series SnowPusher)



Back Drag

Equipped with a steel edge on the back drag, this option is ideal for back dragging away from doors and loading docks for an even cleaner finish.

Available on 5500 Series SnowPushers only.



Spill Guard (Optional)

Available on all 5000 Series SnowWings and Angle Blades.



Rubber Cutting Edge

The optional 1-1/2"x8" rubber cutting edge is available for select models. Sizing may not be exactly as shown.

5000 SERIES



MAX OPERATING WEIGHT: 40,000 lbs.

- Hydraulic 35° angle either direction
- Crossover relief valve protection
- Replaceable, Reversible steel cutting edge
- Replaceable, Reversible rubber cutting edge (OPTIONAL)
- Spring trip cutting edge
- High Tensile AR400 Skid Shoes
- Q-tach or direct fit to accept most makes of loaders
- Clearing width approx. 1.5' narrower when angled
- 9' - 18' Widths
- 42" High mouldboard
- Nitrate rods on angle cylinders
- Two 3x16 angle cylinders
- 2 Year Commercial Warranty
- **Available in Edge Flex models** (see pg. 23)



MAX OPERATING WEIGHT: 40,000 lbs.

- Double Electric Selector Valve. Allows the control of each wing to be operated independently. 12V or 24V coils available. Includes in-cab mount electro-hydraulic harness kit.
- 9' to 16' Main mouldboard widths
- Maximum clearing width 6' wider than main mouldboard width
- Minimum road transport width approx. 9" narrower than main mouldboard width
- Wings 36" deep/wide
- 42" high mouldboard
- 35° angle on main mouldboard
- Relief valve on main angle cylinders
- Q-tach or direct fit to accept most makes of loaders
- Replaceable, Reversible steel cutting edge
- Replaceable, Reversible rubber cutting edge (OPTIONAL - Currently not available on wings)
- Spring trip cutting edge on main mouldboard
- High tensile AR400 Skid Shoes
- Lateral float
- Relief valve on wings
- Floating edge on endplate
- Infinite wing adjustment from 0°-180°
- Actuator has 38,720 in. lb. Torque at 3000 psi - Patented
- Tire Protection System - Patented
- Nitrate rods on angle cylinders
- 2 Year Commercial Warranty
- **Available in Edge Flex models** (see pg. 23)



MAX OPERATING WEIGHT: 40,000 lbs.

- Double Electric Selector Valve. Allows the control of each wing to be operated independently. 12V or 24V coils available. Includes in-cab mount electro-hydraulic harness kit.
- 9' to 16' Main mouldboard widths
- Maximum clearing width 10' wider than main mouldboard width
- Minimum road transport width approx. 9" narrower than main mouldboard width
- Wings 60" deep/wide
- 42" high mouldboard
- 35° angle on main mouldboard
- Relief valve on main angle cylinders
- Q-tach or direct fit to accept most makes of loaders
- Replaceable, Reversible steel cutting edge
- Replaceable, Reversible rubber cutting edge (OPTIONAL - Currently not available on wings)
- Spring trip cutting edge on main mouldboard
- High tensile AR400 Skid Shoes
- Lateral float
- Relief valve on wings
- Floating edge on endplate
- Infinite wing adjustment from 0° - 180°
- Actuator has 54,200 in. lb. Torque at 3,000 PSI - Patented
- Tire Protection System - Patented
- Nitrate rods on angle cylinders
- Great for large sites where greater clearing width is required while being able to narrow down for smaller areas
- Comes with removable top sections on wings to allow for clearance under 5th wheel pins on trailers
- 2 Year Commercial Warranty
- **Available in Edge Flex models** (see pg. 23)



MAX OPERATING WEIGHT: 40,000 lbs.

- Replaceable, Reversible steel cutting edge
- Replaceable, Reversible rubber cutting edge (OPTIONAL)
- Spring trip cutting edge
- Bucket edge mount or Q-tach available
- 44" Deep fixed endplates
- 12' - 18' Widths
- 42" High mouldboard
- 2 Year Commercial Warranty
- **Available in Edge Flex models** (see pg. 23)





2 Year Commercial Warranty

Designed for harsh conditions, HLA Snow backs its 6000 Series blades with a 2 Year Commercial Warranty.



Volvo L70G with the HLA 6205W Series SnowWing

FEATURES



Replaceable, Reversible Cutting Edge

Our cutting edges are designed to be easily replaceable and are reversible to give you twice the life.



Skid Shoes

AR400 high tensile Skid Shoes for optimum performance and prolonged cutting edge life.



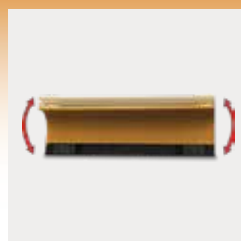
Mouldboard Profile

Precision engineered curve rolls and folds snow. This reduces sticking, side tracking and spill over.



Crossover Relief Valve

Provides protection against hidden obstacles by redirecting hydraulic pressure, swinging the blade around hazards.



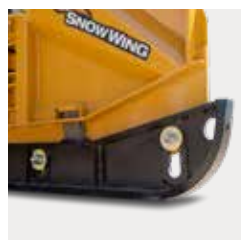
Lateral Float

Allows blade to follow ground contours for better clearing performance.



Spring Trip Cutting Edge

Allows blade to trip back if struck by hidden object limiting damage.



Floating End Plate Edges

(SnowWing Only)

Floating endplate edges follow the surface contour for confident snow clearing.



Floating Blade Hinge

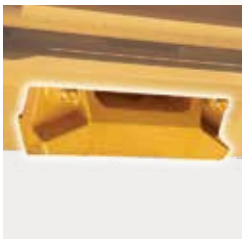
This feature adds a mechanical float to the blade. This allows the blade to better follow the surface contour. The float is designed to be simply locked out when not needed by rolling the blade forward.



6000 SERIES

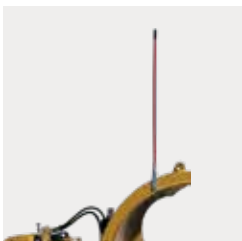
Case 721F with
the HLA 6000 Series SnowBlade

OPTIONS



High Tensile Long Wear Skid Shoes

For heavy use situations we suggest our high tensile steel, long wear Skid Shoes. These provide excellent longevity and performance suited for heavy duty clearing on concrete or asphalt.



Snowblade Marker

Add this to your blade for better visibility and blade position awareness.



Carbide Tipped Cutting Edges

Carbide tipped edges are designed for heavy commercial use, this non reversible cutting edge is suited for heavy duty clearing on concrete or asphalt.



Curb Runner

Optional on the 6000 Series SnowBlade and 6205W Series SnowWing, the Curb Runner runs along the front face of the curb, preventing the edge of the blade from catching on any edges.



Spill Guard (Optional)

Available on all 6000 Series SnowWings and Angle Blades.



Rubber Cutting Edge

The optional 1-1/2"x8" rubber cutting edge is available for select models. Sizing may not be exactly as shown.

6000 SERIES



Available on
select models.



MAX OPERATING WEIGHT: 60,000 lbs.

- Hydraulic 35° angle either direction
- Crossover relief valve protection
- Replaceable, Reversible steel cutting edge
- Replaceable, Reversible rubber cutting edge (OPTIONAL)
- Spring trip cutting edge
- High Tensile AR400 Skid Shoes
- Q-tach or direct fit to accept most makes of loaders
- Clearing width approx. 1.5' narrower when angled
- 10' - 20' Widths
- 53" High mouldboard



- Nitrate rods on angle cylinders
- Two 3x16 angle cylinders
- 2 Year Commercial Warranty
- Floating Hinge
- **Available in Edge Flex models** (see pg. 23)



MAX OPERATING WEIGHT: 60,000 lbs.

- Double Electric Selector Valve. Allows the control of each wing to be operated independently. 12V or 24V coils available. Includes in-cab mount electro-hydraulic harness kit.
- 10' to 20' Main mouldboard widths
- Maximum clearing width 10' wider than main mouldboard width
- Minimum road transport width approx. 9" narrower than main mouldboard width
- Wings 60" deep/wide
- 53" high mouldboard
- 35° angle on main mouldboard
- Relief valve on main angle cylinders
- Q-tach or direct fit to accept most makes of loaders
- Replaceable, Reversible steel cutting edge
- Replaceable, Reversible rubber cutting edge (OPTIONAL - Currently not available on wings)



- Spring trip cutting edge on main mouldboard
- High tensile AR400 Skid Shoes
- Lateral float
- Relief valve on wings
- Floating edge on endplate
- Infinite wing adjustment from 0° - 180°
- Actuator has 54,200 in. lb. Torque at 3,000 PSI - Patented
- Tire Protection System - Patented
- Nitrate rods on angle cylinders
- Great for large sites where greater clearing width is required while being able to narrow down for smaller areas
- 2 Year Commercial Warranty
- Floating Hinge
- **Available in Edge Flex models** (see pg. 23)



For full Edge Flex model listings,
see **SPECIFICATIONS (36)**.



MAXIMIZE CONTACT **CLEAR SNOW**

Ride the Edge

HLA's EdgeFlex takes a ground up approach to clearing snow. The segmented cutting edge provides the necessary adaptability to maintain consistent contact over uneven surfaces, common with aging infrastructure.

With maximum contact the mouldboard transfers its weight evenly across the cutting edge. The even distribution of force protects the surface from the potential damage of conventional blades when they scrape over high spots.

Plowing with an EdgeFlex is easy; just lay the blade down and run. While you worry about blade placement and controlling the direction of the flowing snow, HLA's EdgeFlex technology works its way across the surface, adapting to the contours for cleaner results.



Each individual section moves independently to provide quick response to the changing surface.

This remarkably simplified design is comprised of only two moving parts, an AR400 cutting edge and rubber suspension block.

Designed for easy field service, each section of cutting edge uses 2B2N maintenance. This simple 2 Bolt - 2 Nut design makes maintaining each 12" section an easy one person job. Removing the hardware, which holds the retaining plate in place, allows for easy access to the individual components for that section.



Designed for harsh conditions the EdgeFlex is backed by HLA Snow's 2 Year Commercial Warranty.

For warranty details, contact HLA Snow.



5° Tilt

Each section tilts 5° in either direction to easily adapt to uneven surfaces.

1.5" Vertical Lift

Each EdgeFlex section is able to move up 1.5", ensuring the necessary contact when moving over uneven terrain.



FEATURES



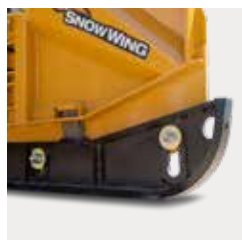
Rotary Actuators - PATENTED

These rugged units come from the construction industry and deliver up to 21,000 - 54,200 in. lbs of torque (depending on model) to hold the wings in place.



180° Rotation

Infinitely and independently adjustable, our wings are rugged enough to stay put and give you control of any situation.



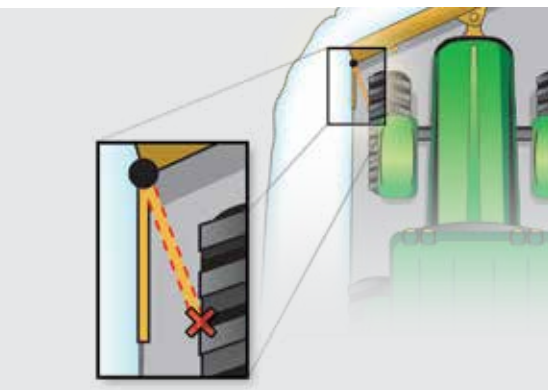
Floating End Plate Edges

Floating endplate edges follow the surface contour for confident snow clearing.



Crossover Relief Valve

Provides protection against hidden obstacles by redirecting hydraulic pressure, swinging the blade around hazards.



Tire Protection System - PATENTED

Our Tire Protection System means that you get the most out of your Snow Wing while keeping the air in your tires. The system automatically protects from unintended damaging collisions between your front tires and end plates. The end plates are automatically rotated away from the tires so the operator can focus on clearing snow and worry less about damaging equipment.

OPTIONS



Wired Joystick Control

Wired joystick allows all blade functions to be operated from a single joystick.



Curb Runner

Optional on SnowWings, the Curb Runner runs along the front face of the curb, preventing the edge of the blade or wing from catching on any edges.



Spill Guard

Optional on select SnowWings and Angle Blades.

The Wingblade design allows you to handily change from a traditional box blade to a straight blade, with the added bonus of extra clearing width. But it doesn't stop there: the endplates are hydraulically-controlled and equipped with industry-proven rotary actuators, giving you rugged and limitless control within the massive 180 degree rotation. This means you can use your blade on an angle with one end open and the other parallel to

the direction you are driving. This allows you to get closer to buildings and parking stones with less chance of damage and better clearing results. With the endplates in their full open position, the blade can be used as a reverse box blade allowing you to back drag snow for full clearing even in the tightest of spaces.



Box Blade

Traditional box blade.



Straight Blade

Up to 10' on select models of extra clearing width when fully extended.



Minimum Road Transfer Width

Approx. 9" narrower than main mouldboard width.



Reverse Box Blade

In full position.

CONTOURWING DESIGN

DESIGNED FOR TRUCK LOTS

Available only on the 4205W and 5205W SnowWing

Removeable Upper Wing Tip

The five foot wing models in the SnowWing lineup reach even further, requiring fewer passes to finish each job.

Each five foot wing model comes standard with removeable upper wing tips. When removed, it forms a contour wing, designed to go under the fifth pin of trucks, clearing those hard to reach places for an even cleaner finish.



HLA RAZOR SNOWPUSHER

Easily clear snow with a new Razor from HLA Snow.



2 Year Commercial Warranty

Designed for harsh conditions, HLA Snow backs its 4000 and 6000 Series blades with a 2 Year Commercial Warranty.

Get a cleaner shave in one pass with the Razor Snow Pusher from HLA Snow. Each 24" wide segment of the mouldboard floats independently allowing it to adjust to the contours of the ground.

Each segment is equipped with a steel cutting edge, ensuring each blade cleanly shaves the snow as it passes across the ground. The cutting edges are backed with a spring trip, flipping the edge back as it strikes an obstacle. This not only reduces hang up, but also helps to prevent unnecessary shock to the operator and the equipment. When damaged or worn, the cutting edge can be easily reversed or replaced individually as required.

The dual tripping mechanism is built around a single expansion

spring for each of the 24" segments. Increasing or decreasing the spring tension allows the segment trip to be adjusted to suit the environment you're clearing, making this the best tool in your fleet.

A durable frame provides all the support that the blades need to handle tough jobs such as stacking. Parallel square tubes provide a solid anchor point for the parallel linkage, ensuring that the mouldboards maintain perfect vertical travel throughout the tripping action.

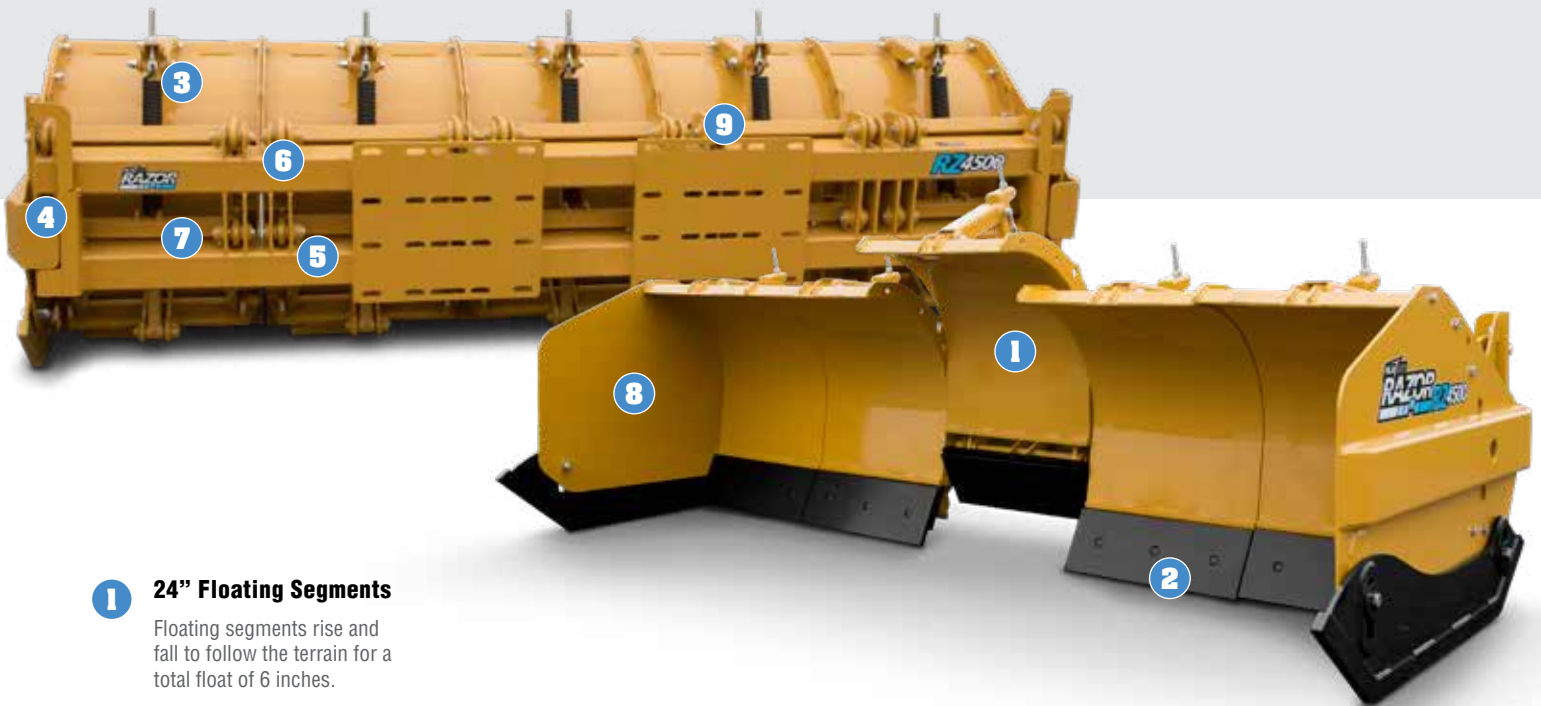
Razor Snow Pushers from HLA Snow, it's a black or white decision.

Part #	Width (ft.)	Number of Segments	Mouldboard Height (in.)	Weight (lbs.)
RZ450010	10	5	34	2,770
RZ450012	12	6	34	3,135
RZ450014	14	7	34	3,510
RZ450016	16	8	34	3,880

MAX OPERATING WEIGHT: 25,000 lbs.

Part #	Width (ft.)	Number of Segments	Mouldboard Height (in.)	Weight (lbs.)
RZ650012	12	6	48	4,485
RZ650014	14	7	48	5,000
RZ650016	16	8	48	5,520
RZ650018	18	9	48	6,035
RZ650020	20	10	48	6,820
RZ650022	22	11	48	7,365
RZ650024	24	12	48	7,910

MAX OPERATING WEIGHT: 60,000 lbs.



1 24" Floating Segments

Floating segments rise and fall to follow the terrain for a total float of 6 inches.

2 Steel Cutting Edge

Our cutting edges are designed to be easily replaceable and are reversible to give you twice the life.

3 Spring Trip

Each segment features a spring trip cutting edge that activates when an obstacle is struck.

4 Float Range Indicator

Helps the operator set proper loader height for optimal section travel.

5 Square Tube Frame

Solid structure prevents flexing.

6 Steel Linkage

Each segment is attached to the frame using parallel steel linkages to maintain mouldboard alignment and allows for stacking.

7 Bushings

Greaseless bushings on linkage pins for low maintenance operation.

8 End Plates

End plates float with the end segment and feature a floating skidbar that follows ground contour.

9 Flexible Mount Options

Allows a wide range of adaptors to attach to the Razor.



SCATTER SHOT



UP TO
40 FOOT
BROADCAST

SINGLESHOT HS100

The Scattershot makes short work of your spreading tasks. This broadcast spreader comes in Singleshot and Doubleshot models.

The ice won't know what hit him when you take aim with the Singleshot broadcast spreader. The half yard hopper is also a durable scoop ready to load and reload at a moment's notice (on select models).

Made of durable galvanized steel, the Scattershot can handle what it dishes out. From sand to salt the internal agitators prevent material from clumping or building up so you get the most out of every load.

Add the optional 3 foot drop shield and this broadcast spreader is ready to take on paths and sidewalks without a lot of overspray.



UP TO
60 FOOT
BROADCAST

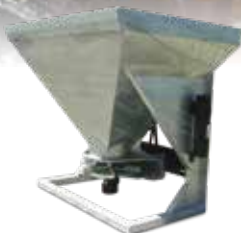
DOUBLESHOT HS200

Unload both barrels on your biggest jobs with the Doubleshot. This dual broadcast spreader can spread up to 60 feet wide. The twin hoppers are combined into a yard and a half capacity scoop that self loads with ease on select models.

Give your plow all the back up it needs with the 3-point mount. Now you can plow, load and spread all with one machine.



HS100 Skidsteer



HS100 3PH



HS100 PTO



HS200



HS200 3PH

Model	Self Loading	Capacity	Width (in.)	Height (in.)	Depth (in.)	Weight (lb.)	Hydraulic
HS100							
HS100 Skidsteer	Yes	1/2 Yard	48"	44"	36"	410 lb.	Yes
HS100 3PH	Yes	1/2 Yard	48"	44"	36"	505 lb.	Yes
HS100 PTO	No	1/2 Yard	48"	44"	36"	420 lb.	No
HS200							
HS200	Yes	1-1/2 Yard	86"	60"	42"	1,320 lb.	Yes
HS200 3PH	Yes	1-1/2 Yard	86"	60"	42"	1,685 lb.	Yes

ALL MODELS AVAILABLE IN LOADER MOUNT OR 3-POINT HITCH

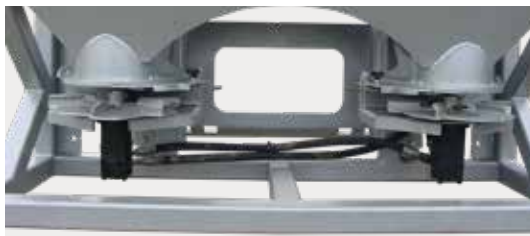
FEATURES



Manual Flow Rate Adjustment Slider



Floating Agitator



Hydraulic Spinners



Spinner Speed Control

OPTIONS



Hydraulic Shut-Off Gate



36" Sidewalk Drop Shield

V-BLADES



2 Year Commercial Warranty

Designed for harsh conditions, HLA Snow backs its 3000 and 4000 Series blades with a 2 Year Commercial Warranty.



Clean your sidewalks easily and effectively using the Six-Way blade from HLA Snow. Both sides of the Six-Way blade can be moved independently to form an angle blade, scoop, or V-Blade to ensure you have the right blade for every condition.

The Six-Way comes standard with spring trip cutting edges, ensuring the cutting edge springs back when the blade strikes an obstacle reducing damage to both the blade and equipment. Each model also comes standard with individually replaceable and reversible steel cutting edges, allowing you to get twice the life before needing to replace them when required.



- Ideal sidewalk blade for compact tractors & skidsteers
- C/w 5/8" AR600 cutting edge
- Replaceable steel cutting edge
- Spring trip cutting edge
- 35 Degree angle with cross over relief valve protection
- 30" High mouldboard with lateral float
- 54" to 84" Widths (6" increments)
- Single Electric Selector Valve. Allows the control of each side of the Six-Way blade to be operated independently. 12V or 24V coils available. Includes in-cab mount electro-hydraulic harness kit.
- High Tensile AR400 Skid Shoes
- Optional Carbide Tipped Edge

MAX OPERATING WEIGHT: 10,000 lbs.



- Ideal for small roadways & driveways
- Replaceable, Reversible steel cutting edge
- Spring trip cutting edge
- 35 Degree angle with cross over relief valve protection
- 34" High mouldboard with lateral float
- 96" to 144" Widths
- Standard AR400 cutting edge with optional carbide tipped cutting edge
- Single Electric Selector Valve. Allows the control of each side of the Six-Way blade to be operated independently. 12V or 24V coils available. Includes in-cab mount electro-hydraulic harness kit.
- High Tensile AR400 Skid Shoes

MAX OPERATING WEIGHT: 25,000 lbs.



Scoop



V-Blade

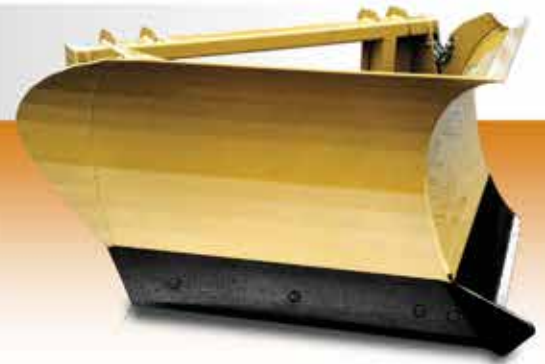


Angle Blade (right & left)

V-BLADE

- Replaceable steel cutting edge
- Q-tach or direct fit to accept most makes of loaders
- 48" to 60" Widths (6" increments)
- 24" high mouldboard

MAX OPERATING WEIGHT: 10,000 lbs.



Front Shoe

Front Shoe guides blade over obstacles, avoiding damage to equipment and property.



Sliding Hinge

Sliding Hinge allows blade to follow contour of surface.

SNOW BUCKET

SNOW BASKET



- 38" Deep
- 32" High
- 60" to 120" Widths (6" increments)

MAX OPERATING WEIGHT: 20,000 lbs.
50 - 125 HORSEPOWER



- Available widths 60" - 120"
- Profile 39" Deep and 32" High
- Tapered Endplates
- Tall rounded endplates for increased capacity
- Excellent operator visibility

MAX OPERATING WEIGHT: 20,000 lbs.
50 - 125 HORSEPOWER



Heavy Duty Grating

Allows extra visibility for the driver.

QUICK ATTACH SNOW BLADE MOUNTS

The HLA Quick Attach Snow Blade Mount is securely connected to both the front and rear of your tractor. Relying on the rear of the mount, the force is pushed through the drawbar from the front of the mount providing incredible pushing strength. Also using parallel linkage, you can rest assured that the blade will always remain parallel to the ground whether it's raised for stacking snow or at full angle.

The quick release design relies on front and rear adapters fitted to the tractors chassis. With the hydraulics connected down pressure on the blade allows you to raise the quick attach aligning it with the front bracket. Once engaged reversing the pressure raises the rear of the quick attach locking it into the rear bracket.

Available for most makes, the undercarriage mount includes all hardware, hose kits and electro - hydraulic remote kit allowing for easy installation.

SB3QDMQF

OPERATING WEIGHT: 5,000 - 10,000 lbs.

SB4QDMQF

OPERATING WEIGHT: 10,000 - 25,000 lbs.



❶ Power and Control

- Heavy duty parallel linkage for optimum lifting height
- AO600 Euro quick fit plate for attachments is standard
- Package includes all mounting hardware and hose kits
- Electro-hydraulic harness kit is standard.
- Adapter kits available for most makes, call dealer for details
- Soft ride accumulator standard

❷ Parallel Vertical Lift

- Blade remains parallel to ground even at full angle and raised
- Extra height for piling snow

❸ Quick Release System

- Quick Release system allows for removal of the complete mount and snowblade in minutes



Models

MODEL	PART #	WEIGHT
SB3QDM Quick Attach Snow Blade Mount less Adapter	SB3QDMQF	1,030
SB3QDM Quick Attach Snow Blade Mount Adapter	Contact HLA for Tractor Listing	130
Optional Factory Blade Installation - SB3QDM	SB3000IN	
SB4QDM Quick Attach Snow Blade Mount less Adapter	SB4QDMQF	1,210
SB4QDM Quick Attach Snow Blade Mount Adapter	Contact HLA for Tractor Listing	135
Optional Factory Blade Installation - SB4QDM	SB4000IN	

UNDERCARRIAGE MOUNT

FOR OLDER TRACTORS



① Power and Control

- Heavy duty parallel linkage for optimum lifting height
- AO600 Euro quick fit plate for attachments is standard on 3000 & 4000 Series
- JRB416 industrial mount quick fit plate for attachments is standard on 5000 Series
- Package includes all mounting hardware and hose kits
- Mounts available for most makes, call dealer for details
- Soft ride accumulator





The HLA Undercarriage Mount is securely connected to both the front and rear of your tractor. Relying on the rear of the mount, the force is pushed through the drawbar from the front of the mount providing incredible pushing strength. Also using parallel linkage, you can rest assured that the blade will always remain parallel to the ground whether it's raised for stacking snow or at full angle.

Available for most makes, the undercarriage mount includes all hardware and hose kits allowing for easy installation.

Models

MODEL	PART #	WEIGHT
2000 Series	SB2000DM	400 lbs.
3000 Series	SB3000DM	800 lbs.
4000 Series	SB4000DM	1,020 lbs.
5000 Series	SB5000DM	1,860 lbs.



2 Parallel Vertical Lift

- Blade remains parallel to ground even at full angle and raised
- Extra height for piling snow

SPECIFICATIONS

SNOWBLADES

Part #	Width (in.)	Mouldboard Height (in.)	Weight (lbs.)	Max Operating Weight
--------	-------------	-------------------------	---------------	----------------------

1000 Series SnowBlades

SB100042	42	20	350	3,000 lbs.
SB100048	48	20	365	
SB100054	54	20	375	
SB100060	60	20	385	
SB100066	66	20	400	
SB100072	72	20	410	
SB100078	78	20	420	
SB100084	84	20	440	
SB100090	90	20	450	
SB100096	96	20	465	

2000 Series SnowBlades

SB200060	60	24	550	5,000 lbs.
SB200072	72	24	575	
SB200078	78	24	595	
SB200084	84	24	610	
SB200090	90	24	620	
SB200096	96	24	635	

3000 Series SnowBlades

SB300006	72	30	980	10,000 lbs.
SB300007	84	30	1,040	
SB300008	96	30	1,095	
SB300009	108	30	1,155	
SB300010	120	30	1,200	

4000 Series SnowBlades

SB400009	108	34	1,935	25,000 lbs.
SB400010	120	34	2,035	
SB400012	144	34	2,225	
SB400014	168	34	2,505	

5000 Series SnowBlades

SB500009	108	42	2,445	40,000 lbs.
SB500010	120	42	2,550	
SB500012	144	42	2,815	
SB500014	168	42	3,095	
SB500016	192	42	3,405	
SB500018	216	42	3,700	

6000 Series SnowBlades

SB600010	120	53	3,350	60,000 lbs.
SB600012	144	53	3,675	
SB600014	168	53	3,950	
SB600016	192	53	4,400	
SB600018	216	53	4,705	
SB600020	240	53	5,060	



Part #	Width (in.)	Mouldboard Height (in.)	Weight (lbs.)	Max Operating Weight
--------	-------------	-------------------------	---------------	----------------------

3000 Series SnowBlades

SB3000EF06	72	30	955	10,000 lbs.
SB3000EF07	84	30	1,015	
SB3000EF08	96	30	1,070	
SB3000EF09	108	30	1,130	
SB3000EF10	120	30	1,175	

4000 Series SnowBlades

SB4000EF09	108	34	1,835	25,000 lbs.
SB4000EF10	120	34	1,935	
SB4000EF12	144	34	2,125	
SB4000EF14	168	34	2,405	

5000 Series SnowBlades

SB5000EF09	108	42	2,345	40,000 lbs.
SB5000EF10	120	42	2,450	
SB5000EF12	144	42	2,715	
SB5000EF14	168	42	2,995	
SB5000EF16	192	42	3,305	
SB5000EF18	216	42	3,600	

6000 Series SnowBlades

SB6000EF10	120	53	3,250	60,000 lbs.
SB6000EF12	144	53	3,575	
SB6000EF14	168	53	3,850	
SB6000EF16	192	53	4,300	
SB6000EF18	216	53	4,605	
SB6000EF20	240	53	4,960	

SNOWPUSHERS

Part #	Width (in.)	Depth (in.)	Mouldboard Height (in.)	Weight (lbs.)	Max Operating Weight
1500 Series SnowPushers					3,000 lbs.
SP150054	54	18	20	330	
SP150060	60	18	20	340	
SP150066	66	18	20	355	
SP150072	72	18	20	365	
1800 Series SnowPushers					4,000 lbs.
SP180060	60	21	24	470	
SP180072	72	21	24	510	
SP180084	80	21	24	555	
2500 Series SnowPushers					6,000 lbs.
SP250072	72	30	30	655	
SP250084	84	30	30	685	
SP250096	96	30	30	725	
3500 Series SnowPushers					15,000 lbs.
SP350007	84	36	38	1,085	
SP350008	96	36	38	1,145	
SP350009	108	36	38	1,210	
SP350010	120	36	38	1,270	
SP350012	144	36	38	1,430	
4500 Series SnowPushers					25,000 lbs.
SP450010	120	36	34	2,075	
SP450012	144	36	34	2,265	
SP450014	168	36	34	2,460	
5500 Series SnowPushers					40,000 lbs.
SP550012	144	44	42	2,905	
SP550014	168	44	42	3,125	
SP550016	192	44	42	3,360	
SP550018	216	44	42	3,795	

Part #	Width (in.)	Depth (in.)	Mouldboard Height (in.)	Weight (lbs.)	Max Operating Weight
3500X Series SnowPushers					15,000 lbs.
SP3500X610	72 / 120	N/A	24	1,525	
SP3500X711	84 / 132	N/A	24	1,605	
SP3500X812	96 / 144	N/A	24	1,690	
3530W Series SnowPushers					10,000 lbs.
SP3530W611	72 / 132	30	30	1,495	
SP3530W712	84 / 144	30	30	1,565	
SP3530W813	96 / 156	30	30	1,625	
SP3530W914	108 / 168	30	30	1,685	
SP3530W1015	120 / 180	30	30	1,755	



Part #	Width (in.)	Depth (in.)	Mouldboard Height (in.)	Weight (lbs.)	Max Operating Weight
3500 Series SnowPushers					15,000 lbs.
SP3500EF07	84	36	38	1,120	
SP3500EF08	96	36	38	1,180	
SP3500EF09	108	36	38	1,245	
SP3500EF10	120	36	38	1,305	
SP3500EF12	144	36	38	1,460	
4500 Series SnowPushers					25,000 lbs.
SP4500EF10	120	36	34	1,975	
SP4500EF12	144	36	34	2,165	
SP4500EF14	168	36	34	2,360	
5500 Series SnowPushers					40,000 lbs.
SP5500EF12	144	44	42	2,805	
SP5500EF14	168	44	42	3,025	
SP5500EF16	192	44	42	3,260	
SP5500EF18	216	44	42	3,695	



Part #	Width (in.)	Depth (in.)	Mouldboard Height (in.)	Weight (lbs.)	Max Operating Weight
3530W Series SnowPushers					10,000 lbs.
SP3530WEF611	72 / 132	30	30	1,530	
SP3530WEF712	84 / 144	30	30	1,600	
SP3530WEF813	96 / 156	30	30	1,660	
SP3530WEF914	108 / 168	30	30	1,720	
SP3530WEF1015	120 / 180	30	30	1,790	

SPECIFICATIONS

SNOWWINGS

Part #	Width Closed (in.)	Width Open (in.)	Mouldboard Height (in.)	Weight (lbs.)	Max Operating Weight
3230W Series SnowWing					10,000 lbs.
SB3230W611	72	132	30	1,570	
SB3230W712	84	144	30	1,640	
SB3230W813	96	156	30	1,700	
SB3230W914	108	168	30	1,765	
SB3230W1015	120	180	30	1,830	
4203W Series SnowWing					25,000 lbs.
SB4203W814	96	168	34	2,720	
SB4203W915	108	180	34	2,880	
SB4203W1016	120	192	34	2,985	
SB4203W1218	144	216	34	3,185	
SB4203W1420	168	240	34	3,440	
4205W Series SnowWing					25,000 lbs.
SB4205W818	93.5	213.5	34	3,290	
SB4205W919	108	228	34	3,435	
SB4205W1020	120	240	34	3,550	
SB4205W1222	144	264	34	3,745	
SB4205W1424	168	288	34	4,035	
5203W Series SnowWing					40,000 lbs.
SB5203W814	96	168	42	3,325	
SB5203W915	108	180	42	3,455	
SB5203W1016	120	192	42	3,620	
SB5203W1218	144	216	42	3,875	
SB5203W1420	168	240	42	4,170	
SB5203W1622	192	264	42	4,490	
5205W Series SnowWing					40,000 lbs.
SB5205W919	108	228	42	4,115	
SB5205W1020	120	240	42	4,245	
SB5205W1222	144	264	42	4,510	
SB5205W1424	168	288	42	4,800	
SB5205W1626	192	312	42	5,120	
6205W Series SnowWing					60,000 lbs.
SB6205W1020	120	240	53	5,050	
SB6205W1222	144	264	53	5,375	
SB6205W1424	168	288	53	5,645	
SB6205W1626	192	312	53	6,100	
SB6205W1828	216	336	53	6,470	
SB6205W2030	240	360	53	6,835	



Part #	Width Closed (in.)	Width Open (in.)	Mouldboard Height (in.)	Weight (lbs.)	Max Operating Weight
3230W Series SnowWing					10,000 lbs.
SB3230WEF611	72	132	30	1,570	
SB3230WEF712	84	144	30	1,640	
SB3230WEF813	96	156	30	1,700	
SB3230WEF914	108	168	30	1,765	
SB3230WEF1015	120	180	30	1,830	
4203W Series SnowWing					25,000 lbs.
SB4203WEF814	96	168	34	2,620	
SB4203WEF915	108	180	34	2,780	
SB4203WEF1016	120	192	34	2,890	
SB4203WEF1218	144	216	34	3,090	
SB4203WEF1420	168	240	34	3,340	
4205W Series SnowWing					25,000 lbs.
SB4205WEF818	93.5	213.5	34	3,190	
SB4205WEF919	108	228	34	3,335	
SB4205WEF1020	120	240	34	3,450	
SB4205WEF1222	144	264	34	3,645	
SB4205WEF1424	168	288	34	3,935	
5203W Series SnowWing					40,000 lbs.
SB5203WEF814	96	168	42	3,225	
SB5203WEF915	108	180	42	3,355	
SB5203WEF1016	120	192	42	3,520	
SB5203WEF1218	144	216	42	3,775	
SB5203WEF1420	168	240	42	4,070	
SB5203WEF1622	192	264	42	4,390	
5205W Series SnowWing					40,000 lbs.
SB5205WEF919	108	228	42	4,015	
SB5205WEF1020	120	240	42	4,145	
SB5205WEF1222	144	264	42	4,410	
SB5205WEF1424	168	288	42	4,700	
SB5205WEF626	192	312	42	5,020	
6205W Series SnowWing					60,000 lbs.
SB6205WEF1020	120	240	53	4,950	
SB6205WEF1222	144	264	53	5,275	
SB6205WEF1424	168	288	53	5,545	
SB6205WEF1626	192	312	53	6,000	
SB6205WEF1828	216	336	53	6,370	
SB6205WEF2030	240	360	53	6,735	

RAZOR SNOWPUSHERS

Part #	Width (ft.)	Segment Width (in.)	Mouldboard Height (in.)	Weight (lbs.)	Max Operating Weight
RZ4500 Razor SnowPusher					25,000 lbs.
RZ450010	10	24	34	2,770	
RZ450012	12	24	34	3,135	
RZ450014	14	24	34	3,510	
RZ450016	16	24	34	3,880	
RZ6500 Razor SnowPusher					60,000 lbs.
RZ650012	12	24	48	4,485	
RZ650014	14	24	48	5,000	
RZ650016	16	24	48	5,520	
RZ650018	18	24	48	6,035	
RZ650020	20	24	48	6,820	
RZ650022	22	24	48	7,365	
RZ650024	24	24	48	7,910	

SIX-WAY BLADES

Part #	Width Straight (in.)	Width Veed (in.)	Width Scooped (in.)	Mouldboard Height (in.)	Weight (lbs.)	Max Operating Weight
3600 Six-Way Blade						10,000 lbs.
SB3600V54	54	51	39	30	695	
SB3600V60	60	56	43	30	720	
SB3600V66	66	61	48	30	740	
SB3600V72	72	66	53	30	765	
SB3600V78	78	71	58	30	785	
SB3600V84	84	76	63	30	805	
4600 Six-Way Blade						25,000 lbs.
SB4600V08	96	84	75	34	1,635	
SB4600V09	108	94	85	34	1,720	
SB4600V10	120	103	95	34	1,805	
SB4600V12	144	113	105	34	1,975	

V-BLADES

Part #	Width (in.)	Mouldboard Height (in.)	Weight (lbs.)	Max Operating Weight
V-Blade				10,000 lbs.
VP48 (Std.)	48	24	495	
VP54 (Std.)	54	24	515	
VP60 (Std.)	60	24	540	



Stay in the Cab it's an **HLA**

For the last 20 years HLA Snow has been committed to providing our customers with innovative equipment. With a comprehensive line up of snow and ice management tools HLA Snow has the right blade, bucket, or spreader for your team.

HLA Snow products are engineered and field tested by our dedicated staff. They bear the cold and scrape their knuckles in real world environments to ensure that when you receive your HLA product, it performs as promised.

On those cold dark nights when the snow won't stop falling, you can stay in the cab and rest easy because it's an HLA.



8082 Road 129, R.R.#3
Listowel, ON, Canada N4W 3G8
Tel. (519) 291-4162
Toll Free (866) 567-4162
Fax (519) 291-5388
sales@horstwelding.com

www.horstwelding.com
www.hlasnow.com

Authorized Dealer: