

SPECIFICATIONS

HX300L

Tier 4 Final Engine

Net Power

SAE J1349 / 230 HP
(171 kW) at 1,950 rpm

Bucket Range

0.52 - 1.85 m³
(0.68 - 2.42 yd³)

Standard Bucket

1.27 m³ (1.66 yd³)

Operating Weight

31,650 kg / 69,780 lb

ENGINE		
Make / model	Cummins QSB6.7	
Type	4-cycle turbocharged, charge air-cooled, diesel engine	
Rated flywheel horsepower	SAE J1995 (gross)	242 HP (180 kW) at 1,950 rpm
	J1349 (net)	230 HP (171 kW) at 1,950 rpm
Max. torque	100.9 kgf-m (729.8 lbf-ft) at 1,500 rpm	
Bore X stroke	107 x 124 mm (4.21" x 4.88")	
Piston displacement	6,700 cc (409 in ³)	
Batteries	2 x 12 V x 160 Ah	
Starting motor	24 V - 4.8 kW	
Alternator	24 V - 95 Amp	

HYDRAULIC SYSTEM

MAIN PUMP	
Type	Variable displacement tandem axis piston pumps
Max. flow	2 x 273 l/min (72.1 gpm)
Sub-pump for pilot circuit (Gear Pump)	29.25 l/min (7.7 gpm)

CROSS-SENSING AND FUEL SAVING PUMP SYSTEM

HYDRAULIC MOTORS	
Travel	Variable-displacement axial piston motor
Swing	Axial piston motor

RELIEF VALVE SETTING

Implement circuits	400 kgf/cm ² (5,690 psi)
Travel	350 kgf/cm ² (4,980 psi)
Power boost (boom, arm, bucket)	380 kgf/cm ² (5,400 psi)
Swing circuit	300 kgf/cm ² (4,270 psi)
Pilot circuit	40 kgf/cm ² (570 psi)
Service valve	Installed

HYDRAULIC CYLINDERS

No. of cylinders bore X stroke	Boom: 140 x 1,465 mm (5.5 x 57.7")
	Arm: 150 x 1,765 mm (5.9 x 69.5")
	Bucket: 135 x 1,185 mm (5.3 x 46.7")

DRIVES & BRAKES

Drive method	Fully hydrostatic type
Drive motor	Axial piston motor, in-shoe design
Reduction system	Planetary reduction gear
Max. drawbar pull	26,500 kgf (58,420 lbf)
Max. travel speed (high / low)	5.9 km/hr (3.67 mph) / 3.3 km/hr (2.05 mph)
Gradeability	35° (70%)
Parking brake	Multi wet disc brake

CONTROL

Pilot pressure operated joysticks and pedals provide very-low-effort operation.

Pilot control	Two joysticks with one safety lever (LH): Swing and arm (RH): Boom and bucket (ISO)
Traveling and steering	Two levers with pedals
Engine throttle	Electric, dial type



OPERATING WEIGHT (APPROXIMATE)

Operating weight, including 6,250 mm (20' 6") boom, 3,050 mm (10' 0") arm, SAE heaped 1.27 m³ (1.66 yd³) bucket, lubricant, coolant, full fuel tank, full hydraulic tank, 5,600 kg (12,350 lb) counterweight and all standard equipment.

OPERATING WEIGHT					
Shoes	Width		Operating weight		Ground pressure
Type	mm (in)		kg (lb)		kgf/cm ² (psi)
Triple grouser	700 (28")		HX300L	31,270 (68,940)	0.52 (7.40)
	800 (32")		HX300L	31,650 (69,780)	0.46 (6.54)
	900 (36")		HX300L	32,030 (70,610)	0.42 (5.97)

SWING SYSTEM

Swing motor	Fixed displacement axial piston motor
Swing reduction	Planetary gear reduction
Swing bearing lubrication	Grease-bathed
Swing brake	Multi wet disc brake
Swing speed	10.2 rpm

SERVICE REFILL CAPACITIES

	liters	US gal
Refilling		
Fuel tank	500	132
Engine coolant	40	10.6
Engine oil	23	6.1
Swing device	11	2.9
Final drive (each)	7.8	2.06
Hydraulic system (including tank)	330	87
Hydraulic tank	190	50
DEF/AdBlue®	42.5	11.2

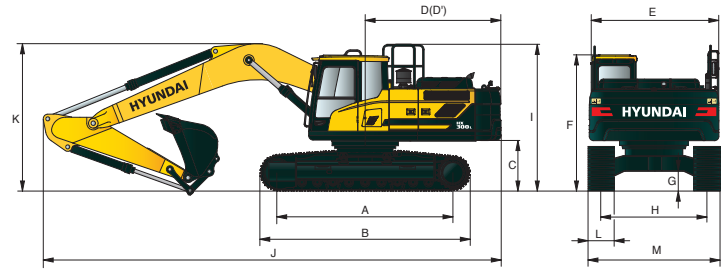
UNDERCARRIAGE

The X-leg type center frame is integrally welded with reinforced box-section track frames. The undercarriage includes lubricated rollers, idlers, track adjusters with shock-absorbing springs and sprockets, and a track chain with double or triple grouser shoes.

	X-leg type
Center frame	
Track frame	Pentagonal box type
No. of shoes on each side	48 EA
No. of carrier rollers on each side	2 EA
No. of track rollers on each side	9 EA
No. of rail guards on each side	2 EA

SPECIFICATIONS HX300L

Tier 4 Final Engine



HX300L DIMENSIONS

Unit: mm (ft-in)

6.25 m (20' 6") boom and 2.1 m (6' 11"), 2.5 m (8' 2"), 3.05 m (10' 0"), 3.75 m (12' 4") arm

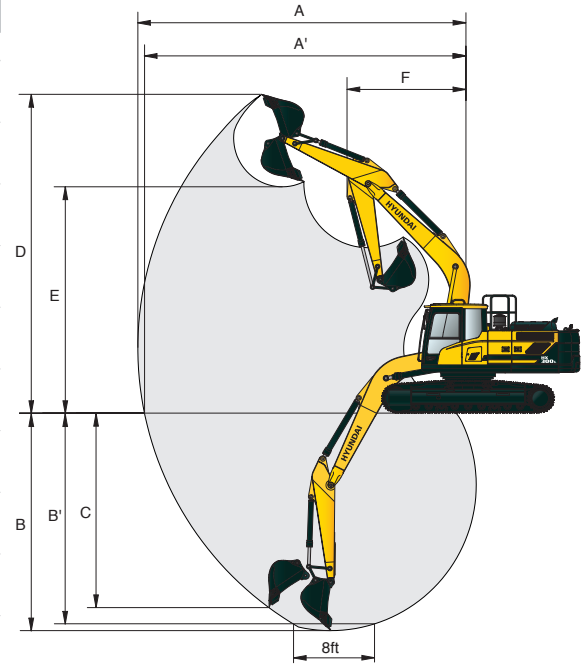
A	Tumbler distance	4,030 (13' 3")
B	Overall length of crawler	4,940 (16' 2")
C	Ground clearance of counterweight	1,185 (3' 9")
D	Tail swing radius	3,210 (10' 6")
D'	Rear-end length	3,120 (10' 3")
E	Overall width of upper structure	2,980 (9' 9")
F	Overall height of cab	3,130 (10' 3")
G	Min. ground clearance	500 (1' 8")
H	Track gauge	2,600 (8' 6")
I	Overall height of guardrail	3,335 (10' 9")

Boom length	6,250 (20' 6")				
Arm length	2,100 (6' 11")	2,500 (8' 2")	3,050 (10' 0")	3,750 (12' 4")	
J Overall length	10,700 (35' 1")	10,650 (34' 11")	10,560 (34' 8")	10,630 (34' 11")	
K Overall height of boom	3,590 (11' 9")	3,470 (11' 5")	3,290 (10' 10")	3,500 (11' 6")	
L Track shoe	Type	Triple grouser			Double grouser
	Width	600 (24")	700 (28")	800 (32")	900 (36")
M Overall width	3,200 (10' 6")	3,300 (10' 10")	3,400 (11' 1")	3,500 (11' 5")	3,300 (10' 10")

HX300L WORKING RANGE

Unit : mm (ft-in)

Boom length	6,250 (20' 6")			
Arm length	2,100 (6' 11")	2,500 (8' 2")	3,050 (10' 0")	3,750 (12' 4")
A Max. digging reach	10,020 (32' 10")	10,280 (33' 9")	10,820 (35' 6")	11,400 (37' 5")
A' Max. digging reach on ground	9,820 (32' 3")	10,080 (33' 1")	10,620 (34' 10")	11,220 (36' 10")
B Max. digging depth	6,440 (21' 2")	6,840 (22' 5")	7,390 (24' 3")	8,090 (26' 7")
B' Max. digging depth (8' level)	6,240 (20' 6")	6,630 (21' 9")	7,200 (23' 7")	7,920 (26' 0")
C Max. vertical wall digging depth	6,000 (19' 8")	5,850 (19' 2")	6,380 (20' 11")	7,080 (23' 3")
D Max. digging height	10,040 (32' 11")	10,000 (32' 10")	10,160 (33' 4")	10,360 (34' 0")
E Max. dumping height	6,940 (22' 9")	7,030 (23' 1")	7,110 (23' 4")	7,310 (24' 0")
F Min. swing radius	4,400 (14' 5")	4,300 (14' 1")	4,250 (13' 11")	4,200 (13' 9")



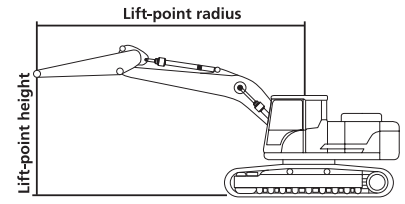
DIGGING FORCE

Boom	Length	mm (ft-in)	6,250 (20' 6")				10,200 (33' 6")	[Power Boost]
	Weight	kg (lb)	2,670 (5,900)				3,420 (7,540)	
Arm	Length	mm (ft-in)	2,100 (6' 11")	2,500 (8' 2")	3,050 (10' 0")	3,750 (12' 4")	7,850 (25' 9")	
	Weight	kg (lb)	1,480 (3,260)	1,460 (3,220)	1,570 (3,460)	1,710 (3,770)	1,690 (3,730)	
Bucket digging force	SAE	kN	168.7 [183.1]	168.7 [183.1]	168.7 [183.1]	168.7 [183.1]	70	
		kgf	17,200 [18,670]	17,200 [18,670]	17,200 [18,670]	17,200 [18,670]	7,100	
		lbf	37,920 [41,170]	37,920 [41,170]	37,920 [41,170]	37,920 [41,170]	15,650	
	ISO	kN	192.2 [208.7]	192.2 [208.7]	192.2 [208.7]	192.2 [208.7]	80	
		kgf	19,600 [21,280]	19,600 [21,280]	19,600 [21,280]	19,600 [21,280]	8,200	
		lbf	43,210 [46,910]	43,210 [46,910]	43,210 [46,910]	43,210 [46,910]	18,080	
Arm crowd force	SAE	kN	180.4 [195.9]	156.9 [170.4]	131.4 [142.7]	114.7 [124.6]	47.1	
		kgf	18,400 [19,980]	16,000 [17,370]	13,400 [14,550]	11,700 [12,700]	4,800	
		lbf	40,570 [44,050]	35,270 [38,290]	29,540 [32,070]	25,790 [28,000]	10,580	
	ISO	kN	190.3 [206.6]	163.8 [177.8]	136.3 [148.0]	119.6 [129.9]	48.1	
		kgf	19,400 [21,060]	16,700 [18,130]	13,900 [15,090]	12,200 [13,250]	4,900	
		lbf	42,770 [46,440]	36,820 [39,980]	30,640 [33,270]	26,900 [29,210]	10,800	

Note : Boom weight includes arm cylinder, piping, and pin
Arm weight includes bucket cylinder, linkage, and pin

SPECIFICATIONS HX300L

Tier 4 Final Engine



Lifting Capacity

Boom: 6.25 m (20' 6")

Arm: 3.05 m (10' 0")

Bucket: 1.27 m³ (1.66 yd³) SAE heaped

Shoe 800 mm (32") triple grouser, CWT 5,600 kg (12,350 lb)

Capacities based on North American Standard Configuration in accordance with ISO condition 2 standard.



Rating over front



Rating over side or 360 degree

Lift-point height m (ft)		Lift-point radius												At max. reach			
		1.5 m (4.9 ft)		3.0 m (9.8 ft)		4.5 m (14.8 ft)		6.0 m (19.7 ft)		7.5 m (24.6 ft)		9.0 m (29.5 ft)		Capacity		Reach	
																m (ft)	
7.5 m	kg														*5,130	*5,130	7.30
24.6 ft	lb														*11,320	*11,320	(24.0)
6.0 m	kg								*7,000	6,200					*4,910	*4,910	8.24
19.7 ft	lb								*15,430	13,670					*10,820	*10,820	(27.0)
4.5 m	kg						*9,030	8,540	*8,190	6,040					*4,890	4,630	8.82
14.8 ft	lb						*19,910	18,820	*18,050	13,320					*10,780	10,210	(28.9)
3.0 m	kg				*14,430	12,320	*10,720	8,080	9,020	5,820	*6,110	4,390			*5,040	4,300	9.12
9.8 ft	lb				*31,810	27,170	*23,640	17,820	19,880	12,830	*13,460	9,690			*11,110	9,480	(29.9)
1.5 m	kg				*17,310	11,530	*12,320	7,680	8,780	5,600	6,680	4,300			*5,370	4,190	9.16
4.9 ft	lb				*38,160	25,430	*27,150	16,920	19,350	12,360	14,720	9,470			*11,840	9,230	(30.0)
Ground Line	kg				*18,290	11,190	12,050	7,410	8,600	5,450					*5,950	4,270	8.94
	lb				*40,330	24,660	26,560	16,340	18,960	12,000					*13,120	9,410	(29.3)
-1.5 m	kg	*8,490	*8,490	*12,490	*12,490	*18,700	11,120	11,920	7,300	8,530	5,380				*6,940	4,590	8.46
-4.9 ft	lb	*18,720	*18,720	*27,540	*27,540	*41,230	24,500	26,290	16,100	18,800	11,850				*15,310	10,120	(27.7)
-3.0 m	kg	*14,740	*14,740	*20,180	*20,180	*17,780	11,220	11,960	7,340	8,590	5,440				8,370	5,310	7.65
-9.8 ft	lb	*32,490	*32,490	*44,480	*44,480	*39,210	24,730	26,380	16,180	18,950	11,990				18,460	11,710	(25.1)
-4.5 m	kg			*21,510	*21,510	*15,510	11,500	*11,430	7,560						*10,410	6,980	6.38
-14.8 ft	lb			*47,420	*47,420	*34,190	25,360	*25,200	16,670						*22,940	15,380	(20.9)

NOTES:

- Lifting capacities are based on ISO 10567.
- Lifting capacity of the HX Series does not exceed 75% of tipping load with the machine on firm, level ground or 87% of full hydraulic capacity.
- The Lift-point is bucket pivot mounting pin on the arm (without bucket mass).
- (*) indicates load limited by hydraulic capacity.



SPECIFICATIONS HX300L

Tier 4 Final Engine

ENGINE	STD	OPT
Cummins QSB 6.7 engine	•	
HYDRAULIC SYSTEM		
Intelligent Power Control (IPC)		
3-power mode, 2-work mode, user mode	•	
Variable power control	•	
Pump flow control	•	
Attachment mode flow control	•	
Engine auto idle	•	
Engine auto shutdown control		•
Electronic fan control	•	
CAB & INTERIOR		
ISO standard cabin		
Rise-up type windshield wiper	•	
Radio / USB player	•	
Bluetooth / hands-free mobile phone system with USB	•	
Miracast	•	
12-volt power outlet (24V DC to 12V DC converter)	•	
Electric horn	•	
All-weather steel cab with 360° visibility	•	
Safety glass windows	•	
Sliding fold-in front window	•	
Sliding side window (LH)	•	
Lockable door	•	
Hot and cool box	•	
Storage compartment and ashtray	•	
Transparent cabin roof-cover	•	
Sun visor	•	
Door and cab locks, one key	•	
Mechanical suspension seat with heater	•	
Pilot-operated adjustable joystick	•	
Console box height adjust system	•	
Cabin lights	•	
Cabin front window rain guard		•
Cabin roof-steel cover		•
Automatic climate control		
Air conditioner and heater	•	
Defroster	•	
Starting aid (air grid heater) for cold weather	•	
Centralized monitoring		
8" LCD display	•	
Engine speed or trip meter / accel.	•	
Engine coolant temperature gauge	•	
Max. power	•	
Low speed / high speed	•	
Auto idle	•	
Overload		•
Check engine	•	
Air cleaner clogging	•	
Indicators	•	
ECO gauges	•	
Fuel level gauge	•	
Hydraulic oil temperature gauge	•	
Fuel warmer	•	
Warnings	•	
Communication error	•	
Low battery	•	
Clock	•	

CAB & INTERIOR	STD	OPT
Seat		
Adjustable air suspension seat with heater	•	
Cabin FOPS/FOG		
FOG ISO 10262 Level 2	Front and top guard	•
(FOPS ISO 3449 Level 2)	Top guard	•
Cabin ROPS		
ROPS ISO 12117-2	•	
SAFETY		
Battery master switch	•	
Rearview camera	•	
AAVM (All-Around View Monitoring)		•
Six front working lights (4 boom mounted, 2 front frame mounted)	•	
Dual boom working lights	•	
Travel alarm	•	
Rear work lamp		•
Beacon lamp		•
Automatic swing brake	•	
Boom holding system	•	
Arm holding system	•	
Safety lock valve for boom cylinder with overload warning device		•
Safety lock valve for arm cylinder		•
Swing lock system		•
Three outside rearview mirrors	•	
OTHER		
Booms		
6.25 m, 20' 6"	•	
10.2 m, 33' 6" Long reach		•
Arms		
2.1 m, 6' 11"		•
2.5 m, 8' 2"		•
3.05 m, 10' 0"	•	
3.75 m, 12' 4"		•
7.85 m, 25' 9" Long reach		•
Removable clean-out dust net for cooler	•	
Removable reservoir tank	•	
Fuel pre-filter	•	
Fuel warmer		•
Self-diagnostics system	•	
Hi-mate Remote Management System	Mobile Satellite	•
Batteries (2 x 12 V x 160 Ah)	•	
Fuel-filler pump (50 l/min / 13 gpm)		•
Single-acting piping kit (breaker, etc.)		•
Double-acting piping kit (clamshell, etc.)	•	
Rotating piping kit		•
Quick coupler piping		•
Quick coupler		•
Boom float control		•
One-pedal straight travel system		•
Pilot accumulator	•	
Pattern-change valve (SAE and ISO)	•	
Tool kit		•
UNDERCARRIAGE		
Lower frame under cover (additional)		•
Lower frame under cover (normal)	•	
Track shoes		
Triple grouser shoes (700 mm, 28")		•
Triple grouser shoes (800 mm, 32")	•	
Triple grouser shoes (900 mm, 36")		•
Track rail guard	•	
Full track rail guard		•

NOTE: Standard and optional equipment may vary. Materials and specifications are subject to change without advance notice. Contact your Hyundai dealer for more information.

PLEASE CONTACT



www.hceamericas.com

6100 Atlantic Blvd., Norcross, GA 30071

TEL (678) 823 7777 FAX (678) 823 7778