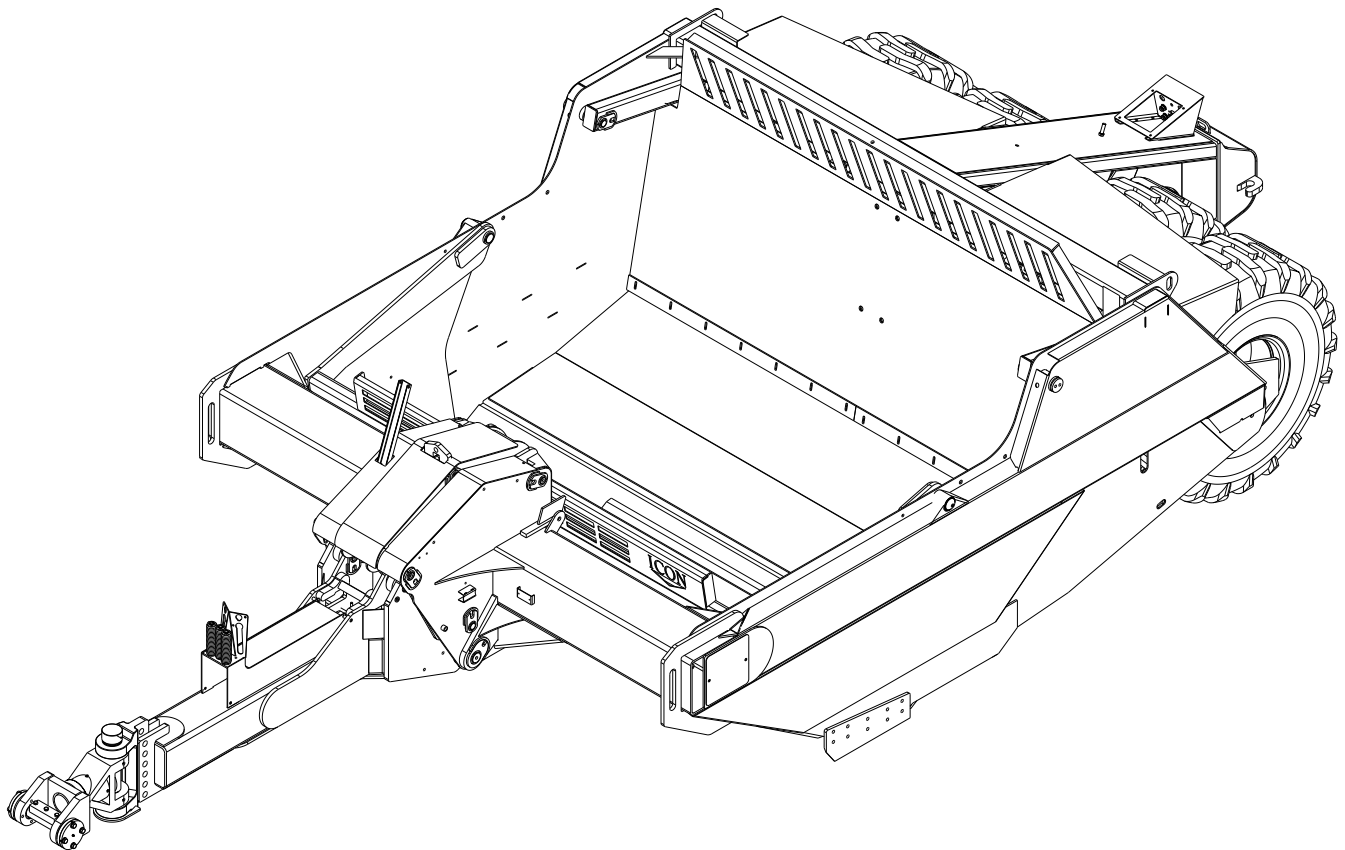




Model 825 Scraper Service and Parts Manual



LANDOLL CORPORATION

1900 North Street

Marysville, Kansas 66508

(785) 562-5381

800-428-5655 ~ WWW.LANDOLL.COM

Foreword

Literature Information

This information should be stored in the literature holder located on the machine.

This manual contains safety information, operating instructions, lubrication and maintenance information.

Some of the photographs or illustrations in the publication show details that can differ slightly from your personal machine. Shields and covers may have been removed to allow for illustrations.

Constant improvement and knowledge of product design may cause changes to your personal machine that is not listed in this manual. Read, understand, and keep this manual with the machine to aid in repairs, adjustment, service and parts identification.

Whenever a question arises regarding your machine, or this manual, please contact Product Support for assistance.

Safety

The safety section of this manual lists basic safety precautions. In addition, this section shows the location of safety signs and decals used on this machine.

Read and understand the basic precautions listed in the safety section before operating or performing lubrication, maintenance or repair work on this machine.

NOTE: Before any service or repair work is performed, make certain that all safety stops are in place.

Be certain to remove all safety stops when repairs are complete.

Operation

This operation section is a reference guide for the new operator and a refresher for the experienced operator. Operating techniques shown are basic, skill and technique will increase with knowledge and usage of the machine.

Maintenance

The maintenance section is a guide to machine care. The illustrated step by step procedures covers the most important of the maintenance schedule. Regular routine lubrication is described in less detail.

Maintenance Intervals

Normally, all lubrication should be on a daily basis. However, certain locations only require lubrication on a weekly basis or require a specific quantity. These locations will be marked clearly, showing and describing requirements.

Under extremely severe, dusty/wet/sandy conditions, or if the haul is long and rough, more frequent lubrication and inspection of highly stressed areas is recommended.

Table Of Contents

- A. Safety Information & Product Warranty
- B. Standard Specifications
- C. Axle Adjustment
- D. Damage While Pushing
- E. Mounting/Dismounting Of Earthmover
- F. 800 Parts Listing
- G. 800 Components
- H. Bolt Listing
- I. Component Photos
- J. Swivel Hitch
- K. Hub/Axle Assy.
- L. Brake Components
- M. Cutting Edges & Components
- O. Accumulator
- P. Hydraulic Components
- Q. Decal & Safety Sticker Location
- R. Axle Seal Replacement

Safety Information

Introduction

This manual is compiled as a guide for owners and operators of the Scraper. Read it carefully so as to be able to follow the suggestions made. Please take time to understand the proper maintenance schedule and SAFE operation of your equipment.

In the event that a new and inexperienced operator is placed in charge of running the equipment, they should read and understand, that part of the manual for proper maintenance and SAFE operation, and to be trained in regard by an experienced operator.

Owner Assistance

If customer service or repairs are needed, contact your Icon dealer. They have trained personnel, parts and service equipment specially designed for Icon products. Your machine's parts should only be replaced with Icon parts. Have the Serial Number and complete Model Number available when ordering parts from your Icon dealer (**See Figure 2-1.**)

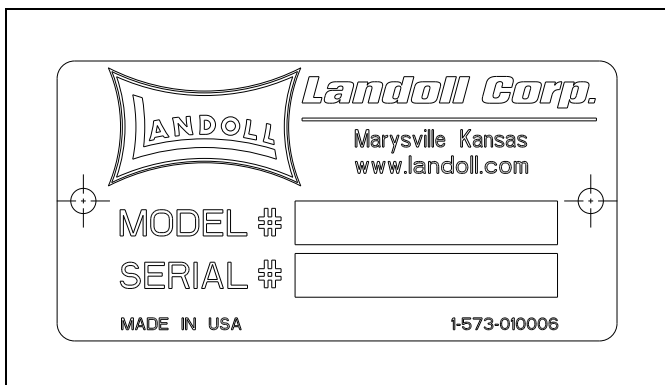


Figure 2-1: ID Plate

Warranty Registration

Be certain to register the grader, by Online registration at www.landoll.com within 10 days of purchase or lease, in order to be on file at Landoll and eligible for Warranty.

Take time to read and understand the Warranty for this product. That Warranty is printed in the Owner's Manual (**See Figure 2-2**), and a separate copy enclosed in the packet.

ICON/Landoll reserves the right to make changes and/or add improvements to its products at any time without obligation to previously manufactured equipment.

Please take time to complete the following information for your personal reference, should you need to contact your Dealer with questions or parts needs.

MODEL _____

SERIAL # _____

DATE OF PURCHASE _____

DEALER NAME _____

We at ICON/Landoll wish to thank you for purchasing our product. We have spent considerable time and effort to research, design, test and develop this machine and are confident it will serve you in the use for which it was designed.

LANDOLL CORPORATION

Product Warranty

LANDOLL CORPORATION 1600 W. 8th St. Beloit KS 67420
(referred to as LANDOLL in this document)

LANDOLL shall Warrant workmanship and materials on the **ICON Industrial Products** for a period of 270 calendar day from the date of original purchase, lease, or rental, from the original Dealer, and in accordance with the following terms and conditions.

Should any part or component fail within the Warranty period, and under normal use conditions, LANDOLL shall supply a new part or component for replacement through the original Dealer. Cost of normal ground freight, for that part or component to the Dealer, shall be paid by LANDOLL. Repair and replacement labor cost, from the original Dealer, shall be paid by LANDOLL at a rate negotiated by LANDOLL.

No further expense shall be paid by LANDOLL, including but not limited to, loss of time or income.

LANDOLL shall not provide Warranty on any part or component that has failed due to abuse, misuse, alteration, improper maintenance, or normal wear. Failure occurring while being pulled by a tractor in excess of engine horsepower, as described in the owners manual and/or posted on the machine, is considered abuse and misuse and shall not receive Warranty. Warranty applies only to normal, intermittent agricultural use, and not commercial or industrial use.

In regard to some components manufactured by other companies and sold by LANDOLL, including but not limited to tires, said Warranty shall be provided solely by that manufacturing company.

This Warranty applies to products sold in the United States and Canada, and is made expressly in place of all other warranties, expressed or implied.

Figure 2-2: Product Warranty

Understanding Safety Statements

You will find various types of safety information on the following pages and on the machine decals (signs) attached to the implement. This section explains their meaning.

NOTICE

Special notice - read and thoroughly understand.



CAUTION

Proceed with caution. Failure to heed caution may cause injury to person or damage product.



WARNING

Proceed with caution. Failure to heed warning will cause injury to person or damage product.



DANGER

Proceed with extreme caution. Failure to heed notice will cause injury or death to person and/or damage product.

NOTE

Means that failure to follow these instructions could cause damage to the equipment or cause it to operate improperly.

NOTE

Make sure you read and understand the information contained in this manual and on the machine signs (decals) before you attempt to operate or maintain this vehicle.

The safety statements contained in this manual relate to the operation of the Grader.

NOTE

You should read and understand the information contained in this manual and on the machine decals before you attempt to operate or maintain this equipment.

- Examine safety decals and be sure you have the correct safety decals for the machine. Order replacement decals through your Icon dealer.
- Keep these signs clean so they can be observed readily. It is important to keep these decals cleaned more frequently than the machine. Wash with soap and water or a cleaning solution as required.
- Replace decals that become damaged or lost. Also, be sure that any new machine components installed during repair include decals which are assigned to them by the manufacturer.
- When applying decals to the machine, be sure to clean the surface to remove any dirt or residue. Where possible, sign placement should protect the sign from abrasion, damage, or obstruction from mud, dirt, oil etc.



DANGER

- **Keep Riders Off of Machinery**
- **Do not allow anyone to ride on tractor or machine. Riders could be struck by foreign objects or thrown from the machine.**
- **Never allow children to operate equipment.**
- **Keep bystanders away from machine during operation.**

Safety Decals

See Decal Listing for decal locations.

NOTE

Replace all missing or damaged safety signs/decals.

Pinching or Crushing Danger

1. Moving parts that are operated by hydraulic pressure can cause serious injury or death.
2. Use extreme caution when working around any moving part.
3. Do not allow any person to be on or near the machine while it is in motion.

Moving Parts

1. Be aware of all moving parts of the machine.
2. Do not allow anyone to be near, or on the machine while operating any moving part.

Danger

1. Read and understand the operator's manual before using the machine.
2. Allow no person to operate the machine before reading the manual and being instructed on proper operation.

Caution

1. This machine is designed for off road use only.

Danger, High Pressure

1. High pressure fluid can cause serious damage to hands and eyes.
2. Carefully relieve pressure before attempting any
3. adjustments.
4. Tighten all fittings before applying pressure.

NOTE

*If fluid is sprayed into eyes or injected into skin, **see a doctor immediately!***

Lubrication

1. Lubrication information is placed near each zerk.
2. Proper maintenance should be followed to assure the working life of the machine.

Proper Notification

1. Contact the proper authorities before you dig.
2. When digging in a populated area, it is recommended that a call be made to area utilities to establish the local of any buried pipes, lines, or structures. When digging in open areas, research and know the local of any underground structures and objects.
3. Striking the blades or bits against buried objects can cause damage to the machine, and is considered as abuse to the unit.

Storage Recommendations

NOTE

If the machine is being stored or not in use for a long period of time, it is recommended that a coating of heavy grease be applied to the exposed chrome cylinder rods. This will help to protect the coating from moisture and rust during this time.

Standard Specifications

Model Specification

Specification	
	Model 825
Capacity Struck	19.6 yd
Capacity Heaped	25 yd
Shipping Weight	33,500 lbs
Width of Cut	13'
Overall Width	13' - 11"
Transport Height	9' - 1"
Replaceable Cutting Edge Center	7/8" X 16" X 60
Replaceable Cutting Edge Outside	7/8" X 13" X 48"
Ground Clearance Full Raised	18"
Maximum Cut Depth	9"
Length Overall	29' - 3"
Cylinders Lift	5.5" X 22"
Cylinders Gate	6" X 22"
Cylinders Push Off	5" X 40"
Hydraulic Hoses	3,000 psi rated
Hydraulics use a Sequencing Valve and requires 2 Tractor Remotes	2 Valve System
Hitches	Cast 360° Swivel
Grease Locations	30 total
Safety Warning Lights	Standard LED
Hub & Spindle Inner	10 Bolt 25,000 lbs.
Hub & Spindle Outer	20 Bolt 35,000 lbs.

Tire Inflation

Tire Size	Tire Manufacturer	Ply/Load Rating	Inflation Pressure (Psi) (Max.)
23.5 X 25	Titan or equivalent	16 Ply 20,900LBS. @ 5MPH	44 psi
26.5 X 25	Titan or equivalent	28 Ply 28,500LBS. @ 30MPH	51 psi

Recommended Torque Specification For Lug Bolts and Nuts

Bolt Size	Torque (FT. LBS.)
7/8-14	450 ft. lbs.

General Torque Specifications (rev. 4/97)

TORQUE SPECIFIED IN FOOT POUNDS - This chart provides tightening torques for general purpose applications when special torques are not specified on process or drawing. Assembly torques apply to plated nuts and cap-screws assembled without supplemental lubrication (as received condition). They do not apply if special graphite moly-disulfide or other extreme pressure lubricants are used. When fasteners are dry (solvent cleaned) add 33% to as received condition torque. Bolt head identification marks indicate grade and may vary from manufacturer to manufacturer. Thick nuts must be used on grade 8 cap-screws. Use value in [] if using prevailing torque nuts.

UNC SIZE	SAE Grade 2	SAE Grade 5	SAE Grade 8	UNF SIZE	SAE Grade 2	SAE Grade 5	SAE Grade 8
1/4-20	4 [5]	6 [7]	9 [11]	1/4-28	5 [6]	7 [9]	10 [12]
5/16-18	8 [10]	13 [13]	18 [22]	5/16-24	9 [11]	14 [17]	20 [25]
3/8-16	15 [19]	23 [29]	35 [42]	3/8-24	17 [21]	25 [31]	35 [44]
7/16-14	24 [30]	35 [43]	55 [62]	7/16-20	27 [34]	40 [50]	60 [75]
1/2-13	35 [43]	55 [62]	80 [100]	1/2-20	40 [50]	65 [81]	90 [112]
9/16-12	55 [62]	80 [100]	110 [137]	9/16-18	60 [75]	90 [112]	130 [162]
5/8-11	75 [94]	110 [137]	170 [212]	5/8-18	85 [106]	130 [162]	180 [225]
3/4-10	130 [162]	200 [250]	280 [350]	3/4-16	150 [188]	220 [275]	320 [400]
7/8-9	125 [156]	320 [400]	460 [575]	7/8-14	140 [175]	360 [450]	500 [625]
1-8	190 [237]	408 [506]	680 [850]	1-14	210 [263]	540 [675]	760 [950]
1-1/8-7	270 [337]	600 [750]	960 [1200]	1-1/8-12	300 [375]	660 [825]	1080 [1350]
1-1/4-7	380 [475]	840 [1050]	1426 [1782]	1-1/4-12	420 [525]	920 [1150]	1500 [1875]
1-3/8-6	490 [612]	1010 [1375]	1780 [2225]	1-3/8-12	560 [700]	1260 [1575]	2010 [2512]
1-1/2-6	650 [812]	1460 [1825]	2360 [2950]	1-1/2-12	730 [912]	1640 [2050]	2660 [3325]
1-3/4-5	736 [920]	1651 [2063]	2678 [3347]	1-3/4-12	920 [1150]	2063 [2579]	3347 [4183]

METRIC:
Coarse thread metric class 10.9 fasteners and class 10.0 nuts and through hardened flat washers, phosphate coated, Rockwell "C" 38-45. Use value in [] if using prevailing torque nuts.

Nominal thread diameter (mm)	Newton Meters (Standard Torque)	Foot Pounds (Standard Torque)	Nominal Thread Diameter (mm)	Newton Meters (Standard Torque)	Foot Pounds (Standard Torque)
6	10 [14]	7 [10]	20	385 [450]	290 [335]
7	16 [22]	12 [16]	24	670 [775]	500 [625]
8	23 [32]	17 [24]	27	980 [1105]	730 [825]
10	46 [60]	34 [47]	30	1330 [1470]	990 [1090]
12	80 [125]	60 [75]	33	1790 [1950]	1340 [1450]
14	125 [155]	90 [115]	36	2325 [2515]	1730 [1870]
16	200 [240]	150 [180]	39	3010 [3210]	2240 [2380]
18	275 [330]	205 [245]	-----	-----	-----

Table 3-1: General Torque Specifications

Hydraulic Fitting Torque Specifications

TORQUE IS SPECIFIED IN FOOT POUNDS- 37° JIC, ORS, & ORB (REV. 10/97)

This chart provides tightening torques for general purpose applications when special torques are not specified on process or drawing. Assembly torques apply to plated nuts and capscrews assembled without supplemental lubrication (as received condition). They do not apply if special graphite moly-disulfide or other extreme pressure lubricants are used. When fasteners are dry (solvent cleaned) add 33% to as received condition torque. Bolt head identification marks indicate grade and may vary from manufacturer to manufacturer. Thick nuts must be used on grade 8 capscrews. Use value in [] if using prevailing torque nuts.

Parker Brand Fittings			
Dash Size	37 Degree JIC	O-Ring (ORS)	O-Ring Boss (ORB)
-4	11-13	15-17	13-15
-5	14-16	-----	21-23
-6	20-22	34-36	25-29
-8	43-47	58-62	40-44
-10	55-65	100-110	58-62
-12	80-90	134-146	75-85
-16	115-125	202-218	109-121
-20	160-180	248-272	213-237
-24	185-215	303-327	238-262
-32	250-290	-----	310-340
Gates Brand Fittings			
Dash Size	37 Degree JIC	O-Ring (ORS)	O-Ring Boss (ORB)
-4	10-11	10-12	14-16
-5	13-15	-----	-----
-6	17-19	18-20	24-26
-8	34-38	32-40	37-44
-10	50-56	46-56	50-60
-12	70-78	65-80	75-83
-14	-----	65-80	-----
-16	94-104	92-105	111-125
-20	124-138	125-140	133-152
-24	156-173	150-180	156-184
-32	219-243	-----	-----
Aeroquip Brand Fittings			
Dash Size	37 Degree JIC	O-Ring (ORS)	O-Ring Boss (ORB)
-4	11-12	10-12	14-16
-5	15-16	-----	16-20
-6	18-20	18-20	24-26
-8	38-42	32-35	50-60
-10	57-62	46-50	75-80
-12	79-87	65-70	125-135
-14	-----	-----	160-180
-16	108-113	92-100	200-220
-20	127-133	125-140	210-280
-24	158-167	150-165	270-360
-32	245-258	-----	-----

Table 3-2: Hydraulic Fitting Torque Specifications

Grease Guide 800 Series
(33 total zerks)



2 zerks
under shield

9 Places

6 Places

2 zerks

All Locations Are Grease Daily, Except Axles (2 zerks per hub - 3 pumps weekly)

Adjustment Of The Axle Bearings

The initial adjustment should be made by the Dealer, during the 24 to 36 hours service. Following this adjustment, the bearings should be checked app. every 30 days of use.

The tires should be hydraulically raised off the ground, to allow for free turning of the wheels

The axle nut lock washer tabs should be straightened, to allow turning of the adjustment nuts.

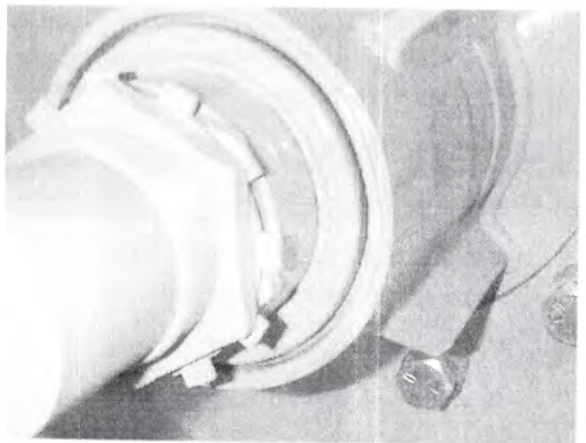
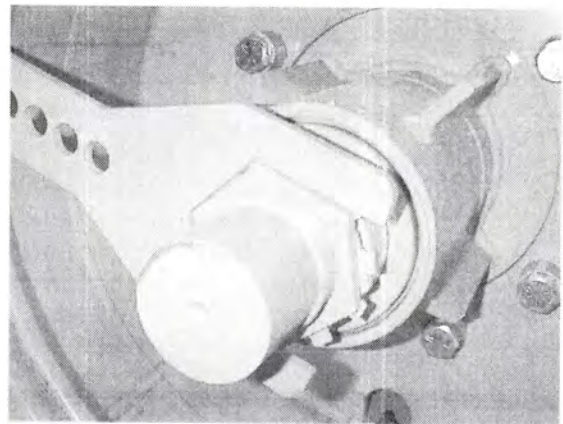
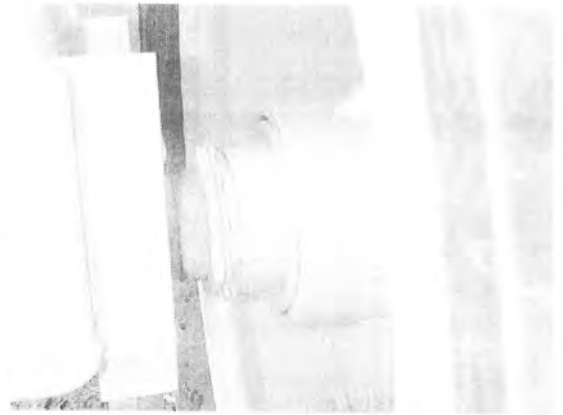
Using the wrench (shown) that is attached to the left side of each machine.(except early C models). Loosen the outer lock nut, to allow the inner adjustment nut to turn.

Tighten the inner nut until the bearing seats firmly into the race.

Once the proper seating is reached, the outer nut should be tightened firmly, to prevent the inner nut from loosening.

(Be certain that the inner nut does not turn while tightening the outer nut, as this will also tighten the bearing).

Be sure to bend the tabs back down on the nuts to assure they do not turn during use.



Mounting/Dismounting of Earthmover

Hook Up

NOTE: The ICON hitch is designed for safety, and one man operation — However, as with any moving part, the potential for injury is present. Be aware of your surroundings while backing. Make certain no one is between the craper and the tractor while backing. Keep hands, feet and all body parts away from any machine component that pivots, swings, or moves in any way, to avoid a potential injury.



Back the power unit into position, attach the hydraulic lines. Pull the snap pin and slide the lock down pin out, allowing the lock down ears to pivot forward.

(shown in the adjoining photo)

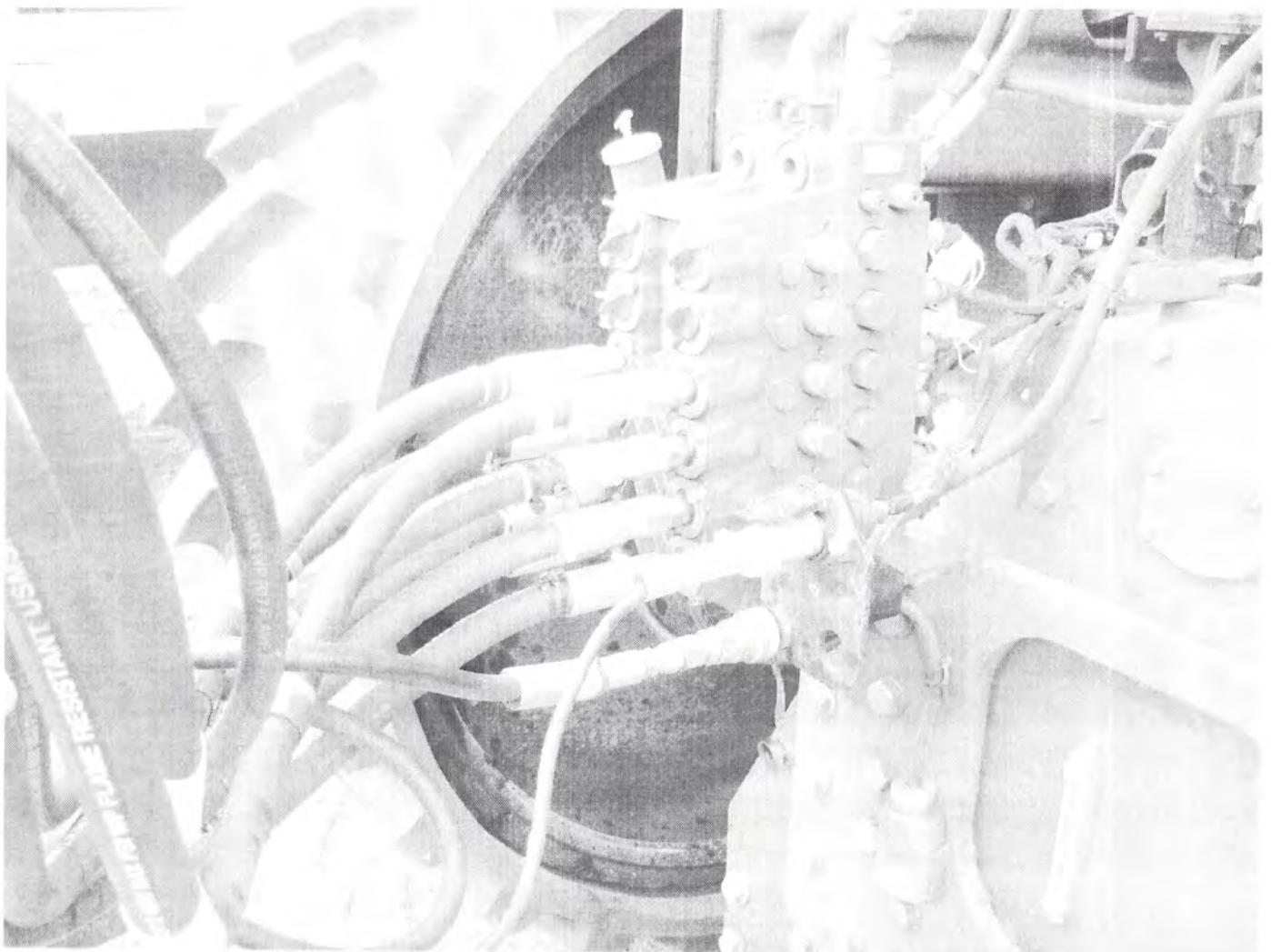
Position the swivel hitch above the quick hitch, and hydraulically lower it into the cradle of the quick hitch. Pivot the lock down ears over the adapter and replace the lock down pin and snap pin. Valve #1 should be placed in the #1 outlet (raise/lower) # 2 should control the gate/wall.

If the machines are being pulled as a tandem unit, Valve #3 should control the gate/wall of the tandem machine and Valve #4 should control the raise/lower of the tandem machine.

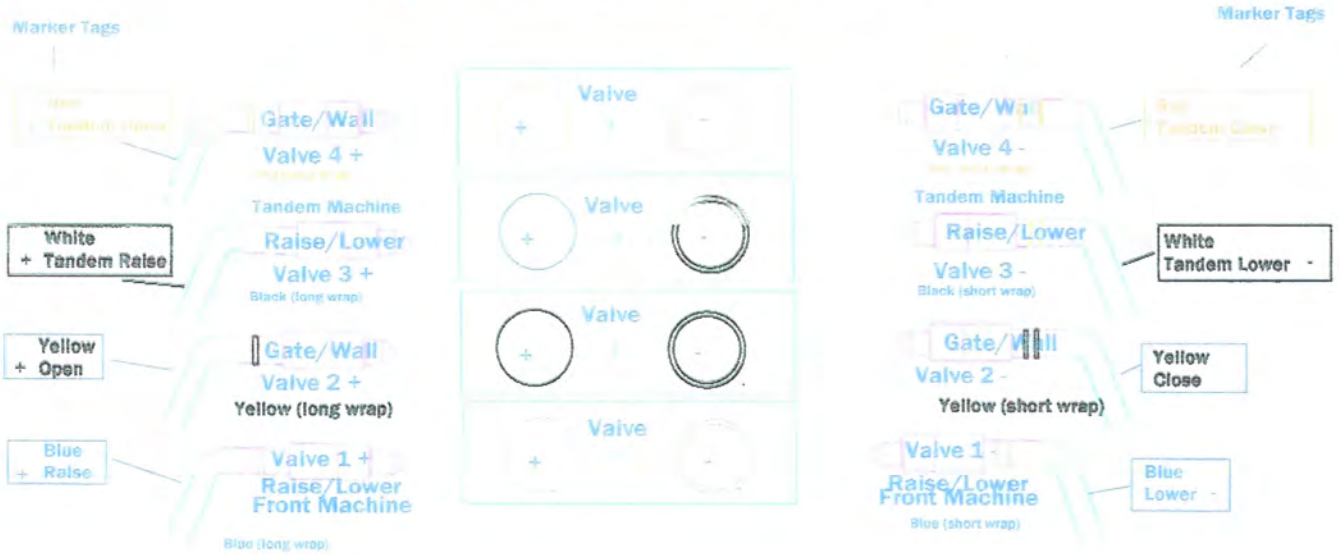
This hook up is only recommended, the operator should adjust for his/her own convenience.

Shown below is the current hydraulic configuration of the 800 Series Challenger. The covers are marked with a + or -, and the ICON hoses are marked accordingly. Also the optional brake hook up is shown.

NOTE: High Pressure fluid can cause serious damage to eyes and hands. See Safety Section for safe hookup procedures.

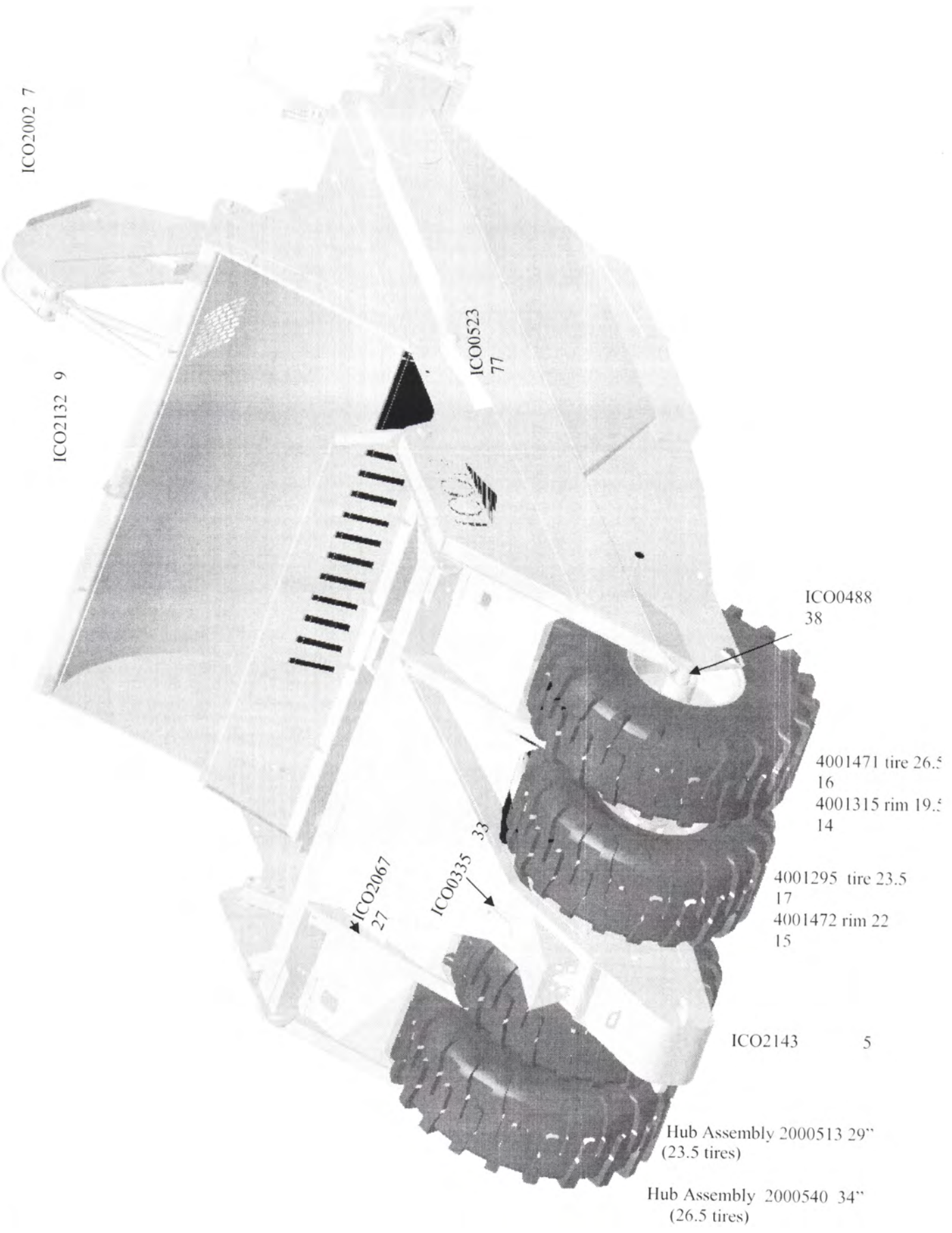


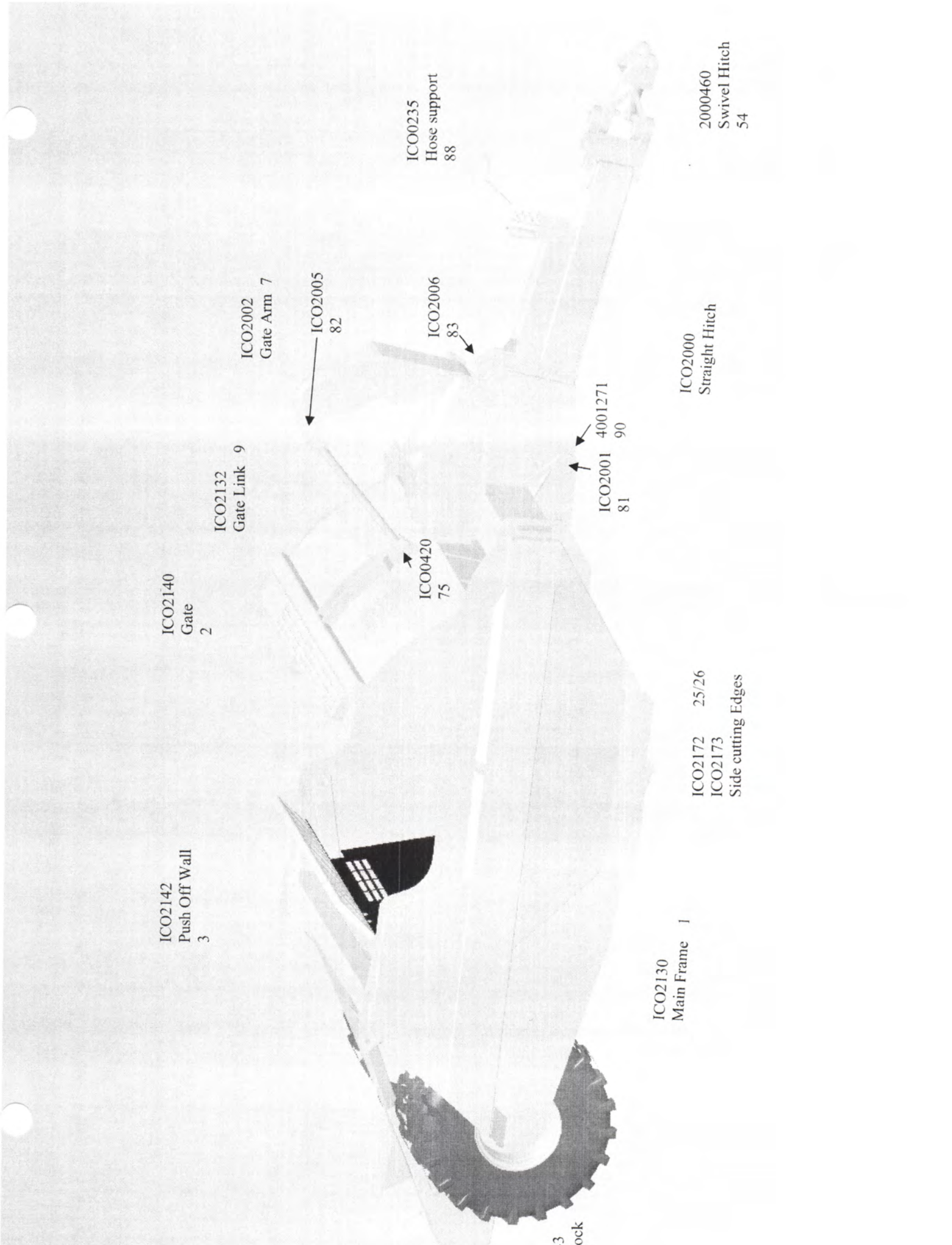
Current Hydraulic Hookup For MT series Tractors



Shown rear of front scraper
Current Tandem Hookup







ICO2142
Push Off Wall
3

ICO2140
Gate
2

ICO2132
Gate Link
9

ICO2002
Gate Arm
7

ICO2005
82

ICO0420
75

ICO2006
83

ICO2001
81

4001271
90

ICO2000
Straight Hitch

ICO2172 25/26
ICO2173
Side cutting Edges

ICO20235
Hose support
88

2000460
Swivel Hitch
54

ICO2130
Main Frame
1

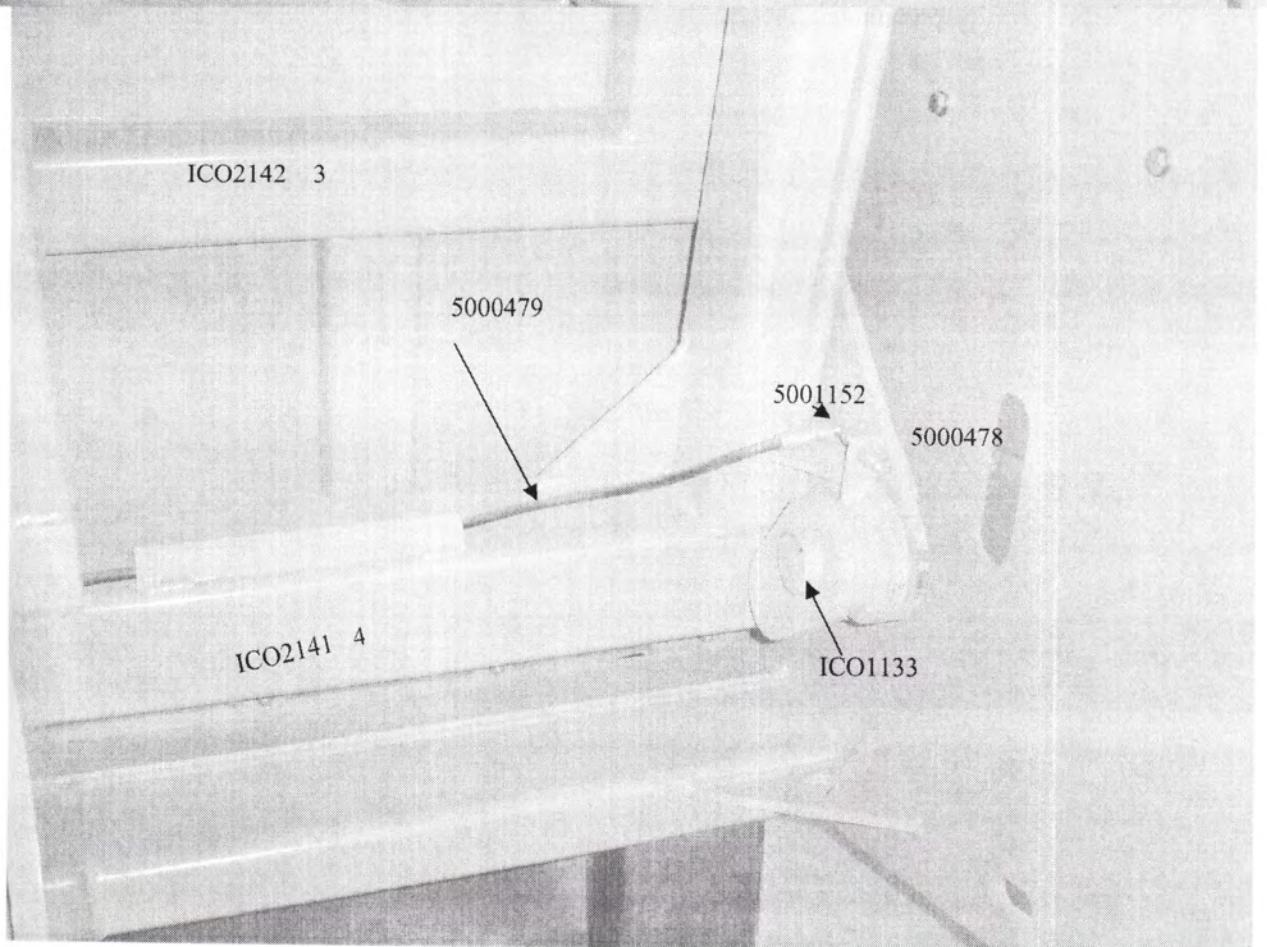
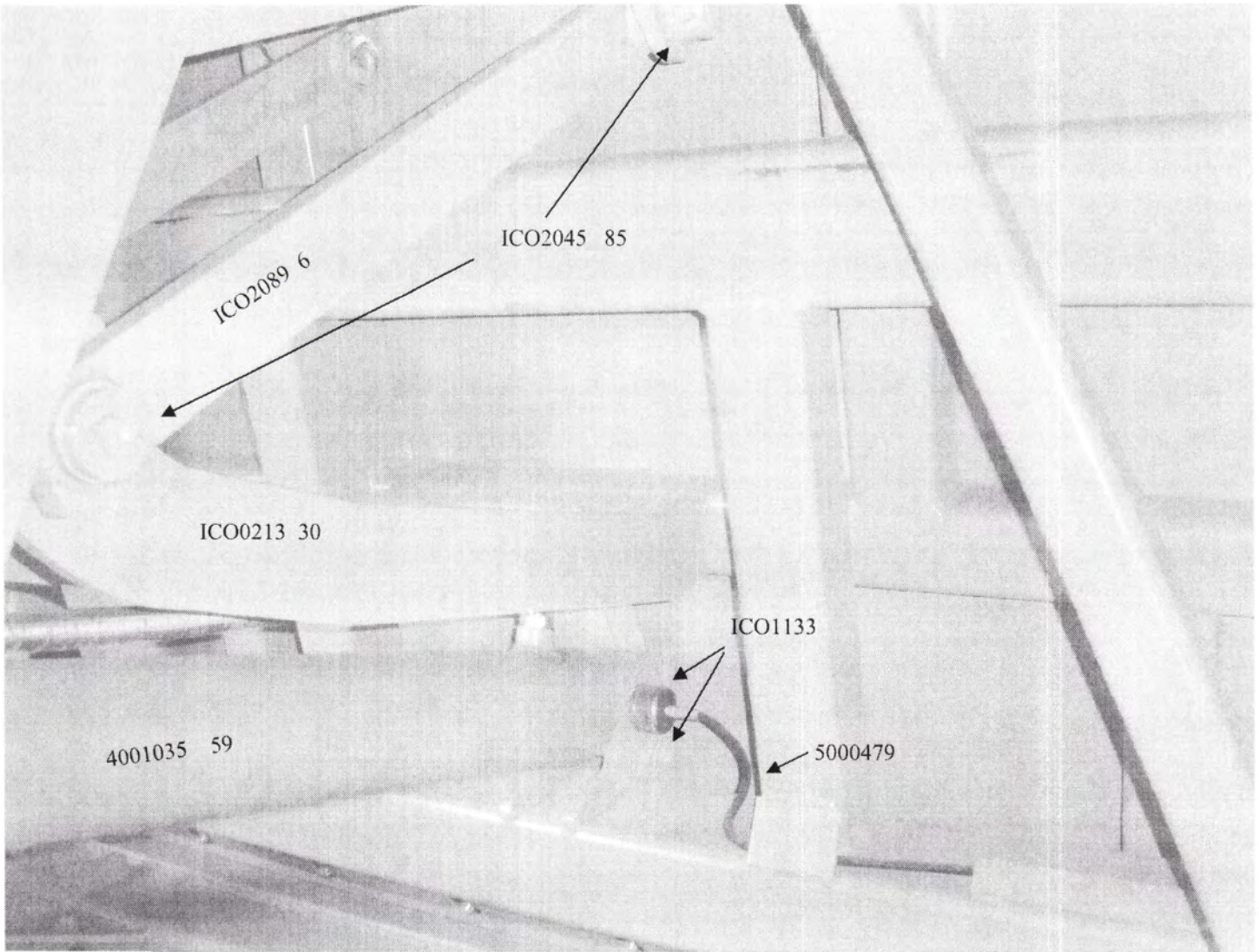
43
Block

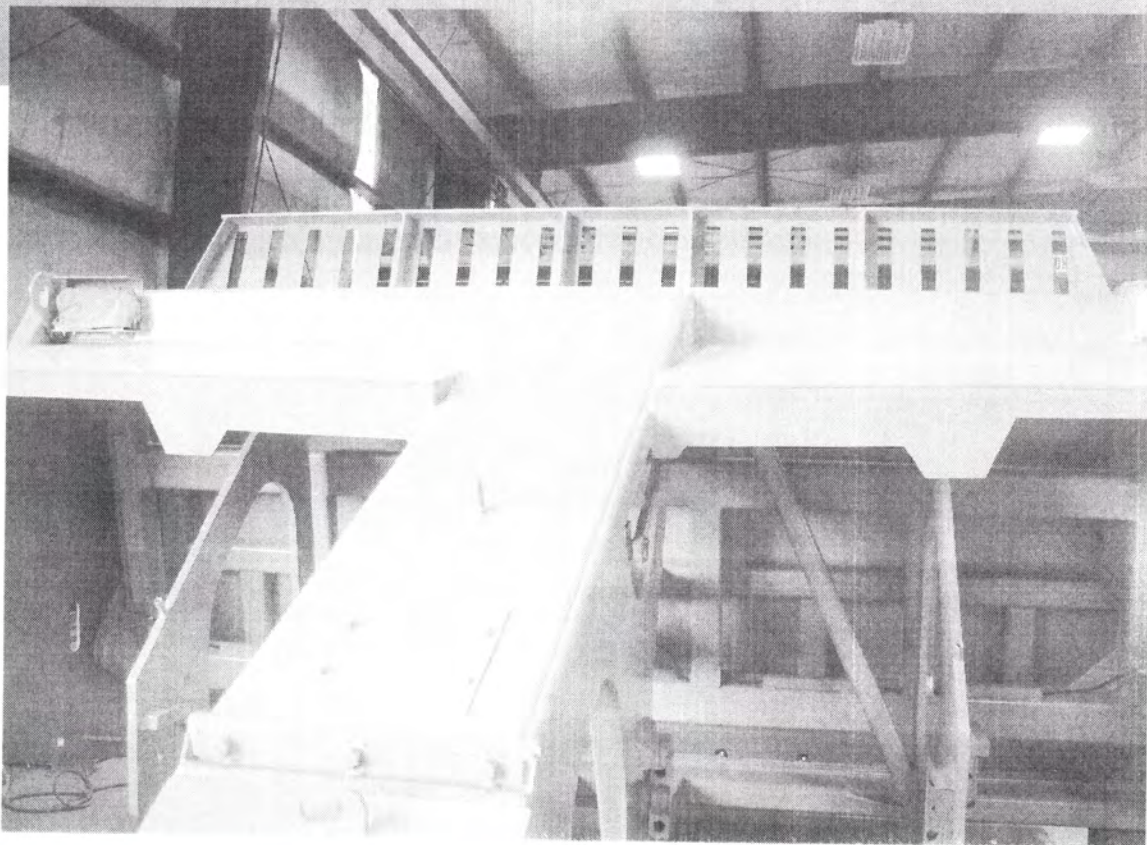
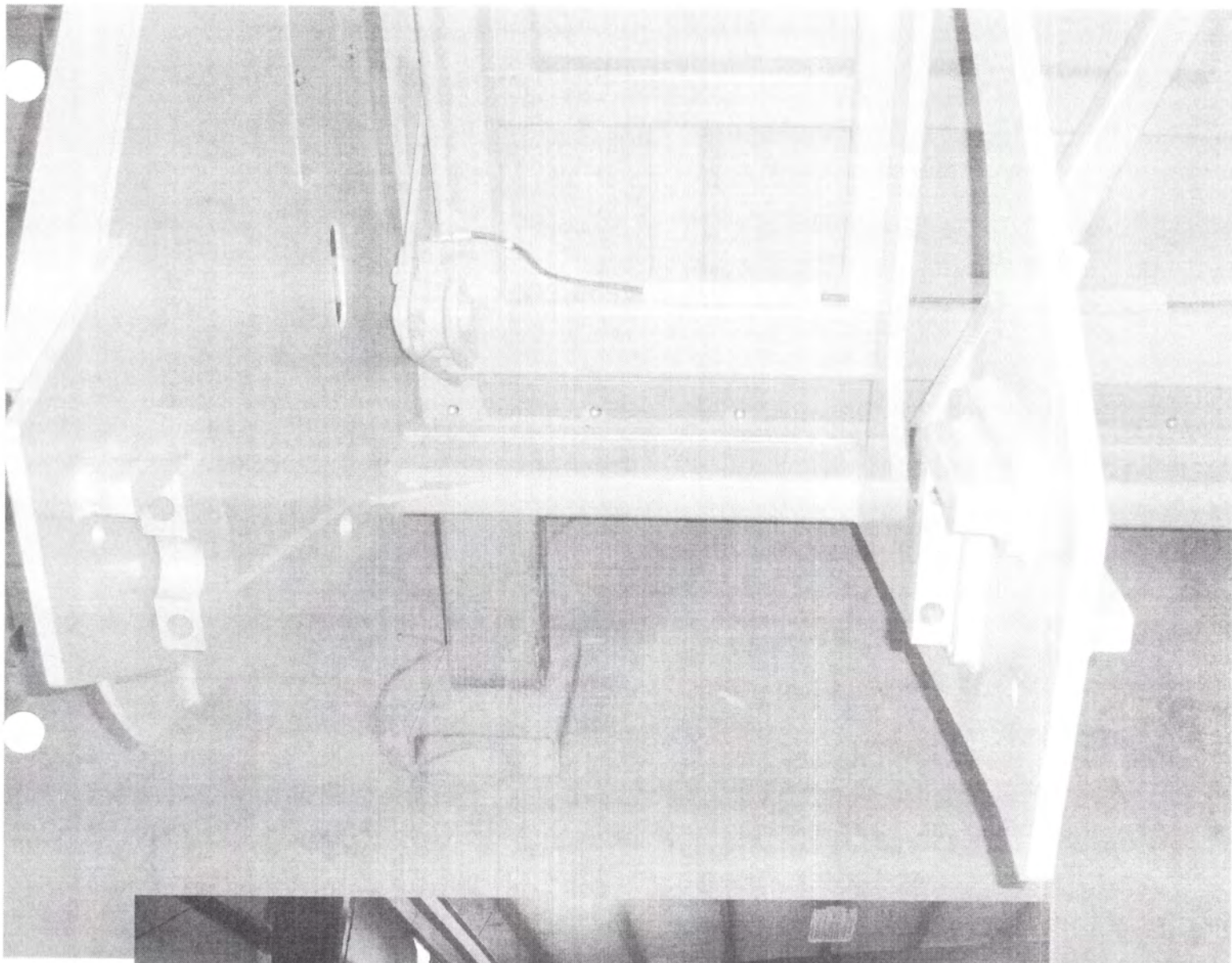
Parts Listing For ICON 823 Earthmover

Ref. #	Part #	Description	Qty
1.	ICO2130	823 Main Frame	1
2.	ICO2140	823 Gate	1
3.	ICO2142	823 Push Off Wall	1
4.	ICO2141	823 Push Off Frame	1
5.	ICO2143	823 Push Block	1
6.	ICO2089	Push Off Wall Linkage	2
7.	ICO2002	Gate Arm	1
8.	ICO2000	Straight Hitch	1
9.	ICO2132	Gate Link	1
10.	ICO2079	Safety Stop	1
11.	ICO2162	Push Off Wear Strips	2
12.	2000513	Hub Assembly 29"	2
13.	2000540	Hub Assembly 34"	2
14.	4001315	Rim 19.5x25 5pc for 23.5 tires	2
15.	4001472	Rim, 22x25 5pc for 26.5 tires	2
16.	4001471	Tire, 26.5x25 24ply	2
17.	4001295	Tire, 23.5x25 16ply	2
18.	2000537	Digital Gauge Kit (complete)	1
19.	ICO2016	821 cover	2
20.	ICO2017	821 cover	2
21.	ICO2018	821 Hose Guard	1
22.	ICO2024	821 Depth Gauge	1
23.	ICO2033	821 Tongue Cover (R)	1
24.	ICO2041	821 Tongue Cover (L)	1
25.	ICO2172	Cutting Edges (Left side)	1
26.	ICO2173	Cutting Edges (Right side)	1
27.	ICO2067	Brake Cover	2
28.	ICO2135	Light Bracket	2
29.	ICO2108	Safety Stop	1
30.	ICO0213	Push Off Support	1
31.	ICO0258	Push Off Bearing	1
32.	ICO0244	Lift Cylinder Spacer (rear frame)	2
33.	ICO0335	Axle Nut Wrench	1
34.	ICO0358	Hose Spring	3
35.	ICO1128	Brake Hose Protector	4
36.	2000606	823 Lights	1
37.	SCR2078	Wheel Bolt Spacers	60
38.	ICO0488	Axle Clamp w/groove	4
39.	ICO2113	Axle Bolt Spacer	8
40.	ICO2053	Axle Nut	9
41.	4001419	Bearing, Sealed NTN SBxo339	1
42.	ICO2081	Accumulator 2 Gallon	1
43.	4001420	Hyd Ball Shutoff valve	1
44.	4001317	Hyd Accumulator Valve VS4ACBF8	1
45.	ICO0223	Side Pipe Clamps	2
46.	4000926	Hose Clamp 7"	1

823 Parts Listing (cont)

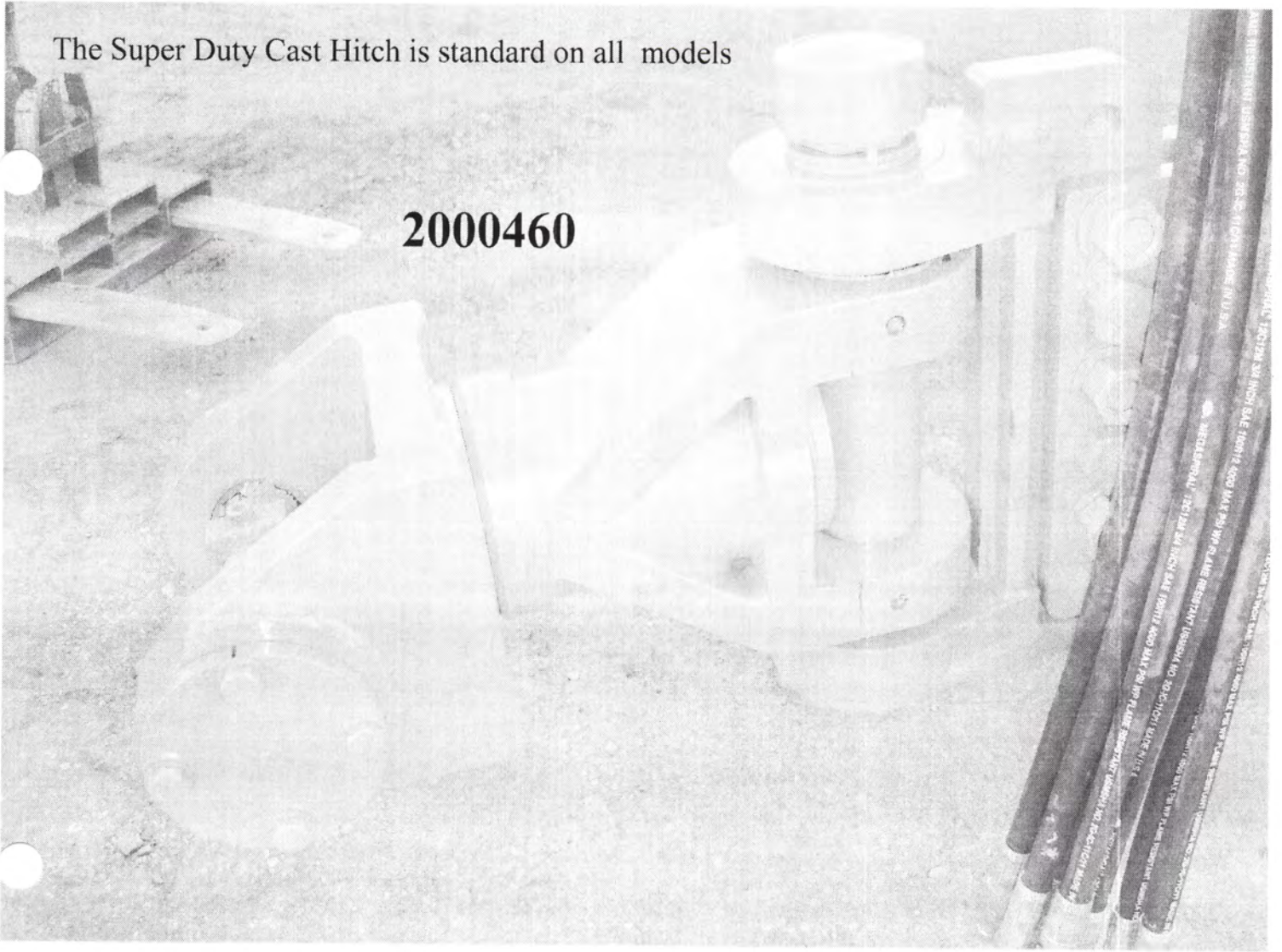
Ref #	Part #	Description	Qty
47	5000616	Hose Clamp Plastic 3/4"	8
48	5000618	Hose Clamp Cover Plate	2
49	4000346	Hose Clamp 5"	1
50	ICO0257	Hyd. Line Clamp 2x3 1/2"	1
51	ICO0350	Gate Link Spacer	2
52	4001421	U Bolt (5/8) 4.75 x 5.63" (Accumulator)	1
53	2000609	823 Push Block	1
54	2000460	HD Swivel Hitch 3" pin	1
55	ICO2042	Accumulator Valve Actuator	1
56	ICO2044	Accumulator Valve Mounting Block	1
57	ICO2031	Accumulator Valve Bracket	1
58	ICO2032	Accumulator Valve Bracket #2	1
59	4001035	Hyd. Cylinder 5x40 53 3/4" w/bushings	1
60	4001314	Hyd. Cylinder 5 1/2"x22" (lift)	2
61	4001236	Hyd. Cylinder 6x22" 37 1/4" w/bushings	1
62	4001051	Cutting Edge 7/8x13x48	2
63	4001511	Cutting Edge 7/8x19x60	1
64	5001131	Kit, Hyd. fittings (single)	1
65	5001132	Kit, Hose (single)	1
66	4001452	Hyd. Valve Block Sequence	1
67	4001449	Hyd. Counter Valve (CBGB-LHN)	1
68	4001450	Hyd. Sequence Valve (SCGA-LAN)	1
69	4001451	Hyd. Pilot Chk Valve (CKGB-XCN)	1
70	2000607	Bolt Kit (823)	1
71	2000608	Brake Assembly	1
72	ICO2049	Hyd Rear Cover	1
73	ICO2056	Gate Arm Pin Washer	1
74	ICO1133	Pin, 2 1/2x5 3/4"	3
75	ICO0420	Pin, 2 1/2x5 3/8" (ICO0218 replacement)	1
76	ICO0501	Pin, 2 1/2x4 1/2"	3
77	ICO0523	Pin, Gate Tapered	2
78	ICO0525	Pin, 2 1/2x10 3/4 (po frame)	2
79	ICO0236	Push Off Pin Cap	2
80	ICO2003	Pin, 2 1/2x31 13/16	1
81	ICO2001	Pin, 34 13/16x3 1/2"	1
82	ICO2005	Pin, 2 1/2x9 1/2	4
83	ICO2006	Pin, 2 1/2x 6 1/16	2
84	ICO2007	Pin, 2 1/2x20 5/16	1
85	ICO2045	Pin, 1 1/2x4 1/4 chrome	4
86	ICO1117	Pin Spacer 7/8"	5
87	ICO1118	Pin Spacer 9/16"	12
88	ICO0235	Hose Support	1
89	2000605	Decal Kit (823)	1
90	4001271	Bushing 4" OD - 3.5ID Flanged (located in straight hitch)	2



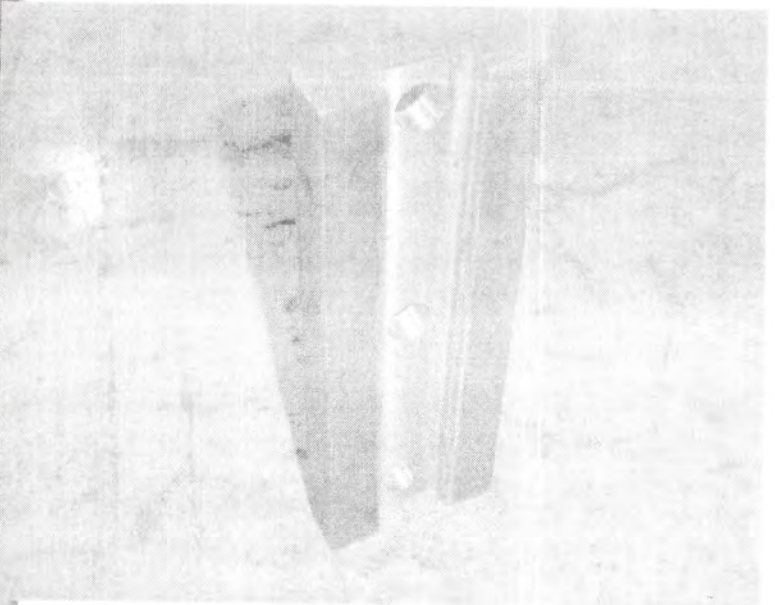
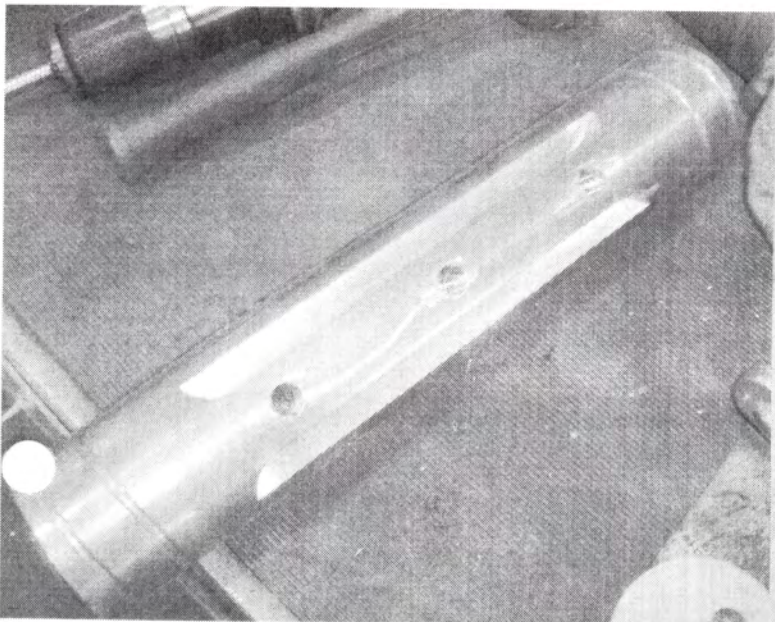


The Super Duty Cast Hitch is standard on all models

2000460



Shown is the 3" pin (ICO2052) used with the cast hitch. The top is milled to allow the retainer plate (ICO2051) to bolt on using (3) 5/8 x 3" bolts.



2000460

The Super Duty Cast Hitch
uses a 3" quick attach pin
ICO2052

cast swivel
ICO1092

1 1/2" x 6 1/2"

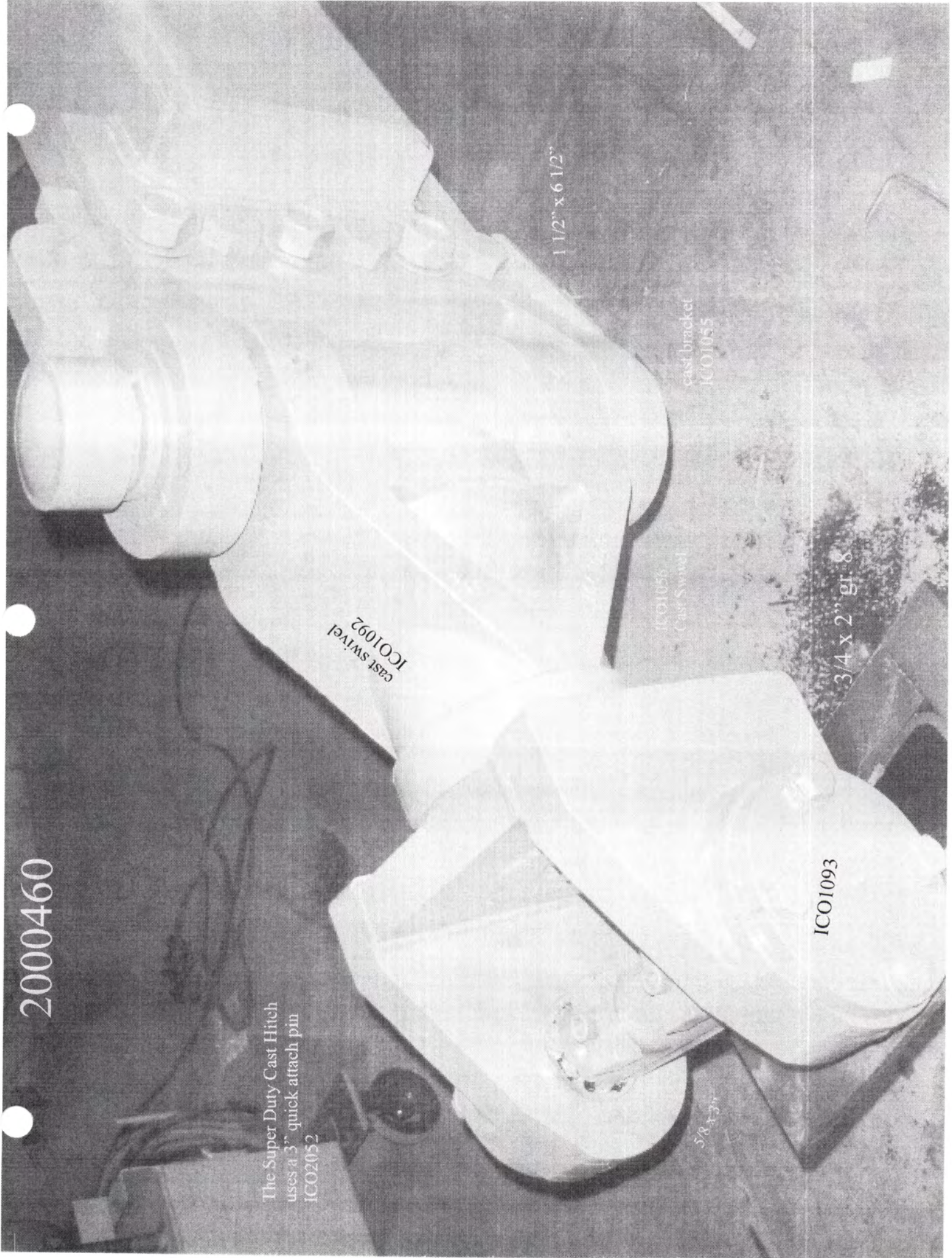
cast bracket
ICO1055

ICO1056
Cast Swivel

ICO1093

3/4 x 2" gr. 8

3/8 x 3"



CAST 360 2000460

ICD1097
4001292

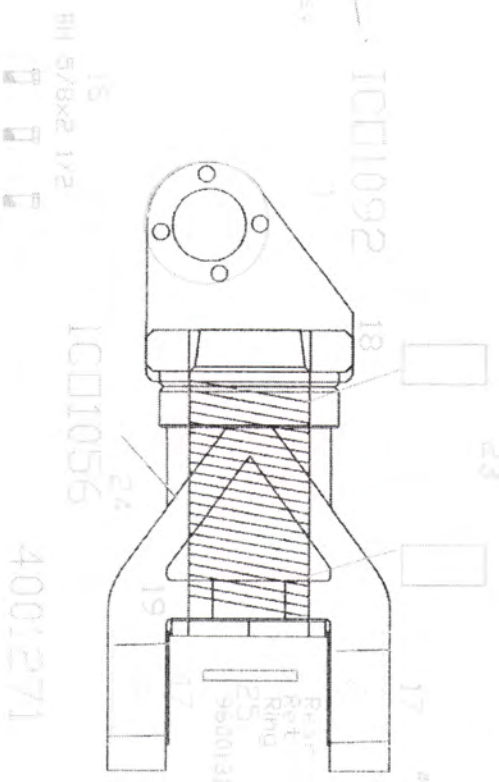
13 MS 2 1/2
14 PC

Old style 4001302 3"
New style 4001455 5"

WFH 2 1/2

8 ICD1036

Includes
9200052 gear & drive Assy
ICD1055 support
9600131 ret ring
9200903 front m



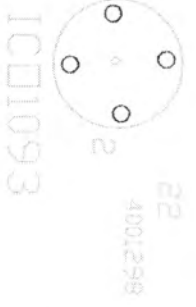
ICD1092

ICD1056

4001271

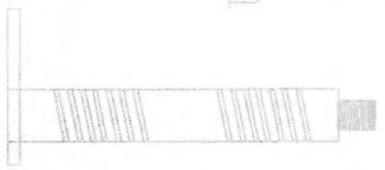


ICD2052

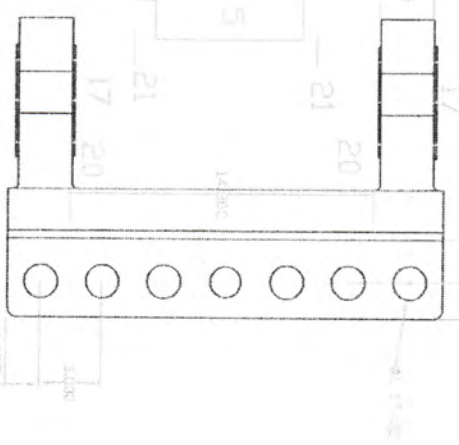


ICD1093

ICD1061

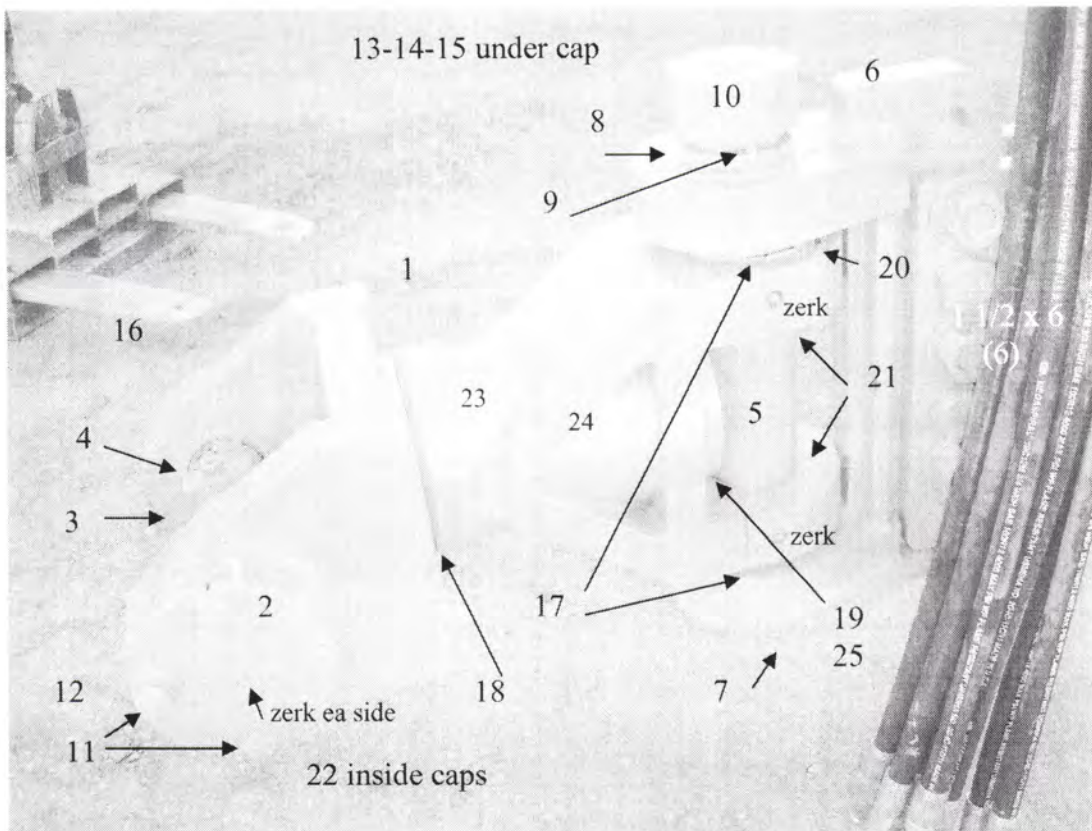


ICD1062



ICD1055

12 WFH 3/4
11 BH 3/4x2

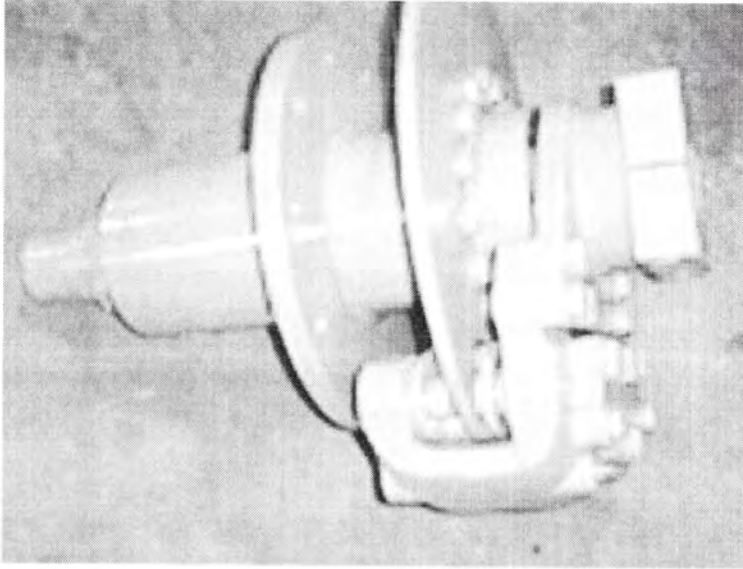


Ref #	Description	Qty	Part #
1	Cast Swivel (ears, dowel, rear ring welded)	1	ICO1092
2	Quick Attach 3" Pin Cap	2	ICO1093
3	Quick Attach 3" Pin	1	ICO2052
4	Quick Attach Pin Keeper	1	ICO2051
5	Hitch Spacer Tube	1	ICO1061
6	Cast Hitch Bracket	1	ICO1055
7	Main Vertical Pin	1	ICO1062
8	6" Swivel Hitch Spacer	1	ICO1086
9	2" Rubber Hose	1	ICO1087
10	4" PVC Cap	1	4001292
11	Bolt, Hex 3/4 x 2" gr. 8	8	BH 3/4
12	Washer, Flat Hard 3/4"	8	WFH 3/4
13	Nut, Slotted 2 1/2" Course	1	NS 2 1/2
14	Pin, Cotter 3/8 x 5"	1	PC 3/8
15	Washer, Flat 2 1/2" Hard	1	WFH 2 1/2
16	Bolt, 5/8 x 3"	3	BH 5/8
17	Bushing	4	4001271
18	O-Ring 8 7/8x8 1/2" ID	1	4001272
19	O-Ring 7 3/8x7" ID	1	4001286
20	O-Ring 5 7/8x 5" ID	2	4001275
21	O-Ring 4 x 3 5/8" ID	2	4001274
22	Wiper Seal 3 1/2 x 3 1/4"	2	4001298
23	Bushng (old style) 640591300	2	4001302
	Bushing (new style) 640591500	2	4001455
24	Cast Swivel (only)	1	ICO1056
25	Rear Retaining Ring	1	9600131

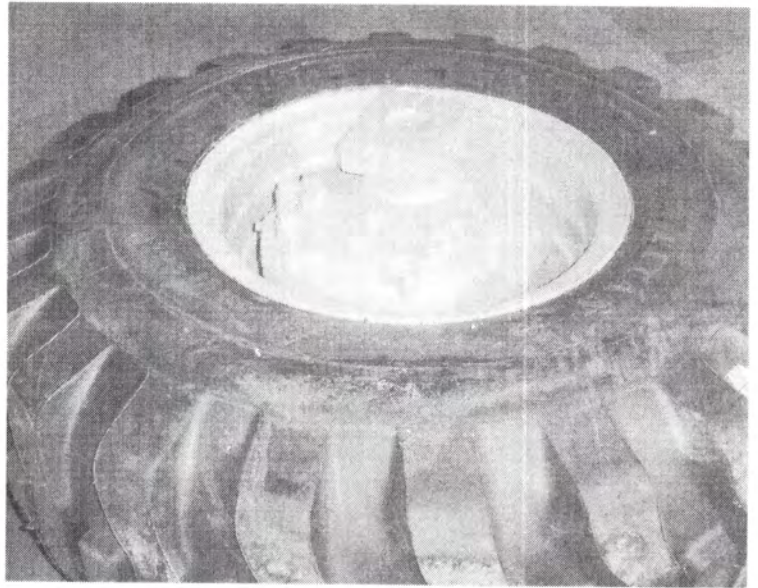
Hub & Axle Assembly

Axle and Hub assembly shown with brake package.

Caliper # 4001276



Brake assembly mounted on tire/rim

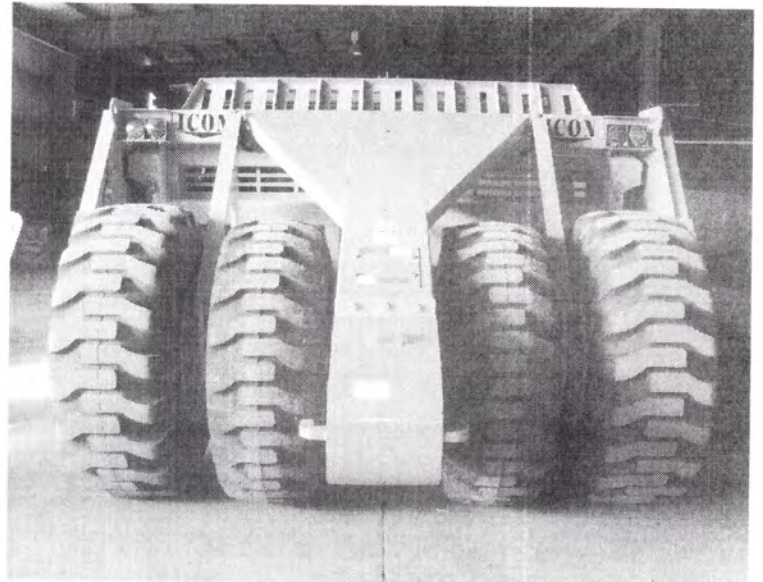
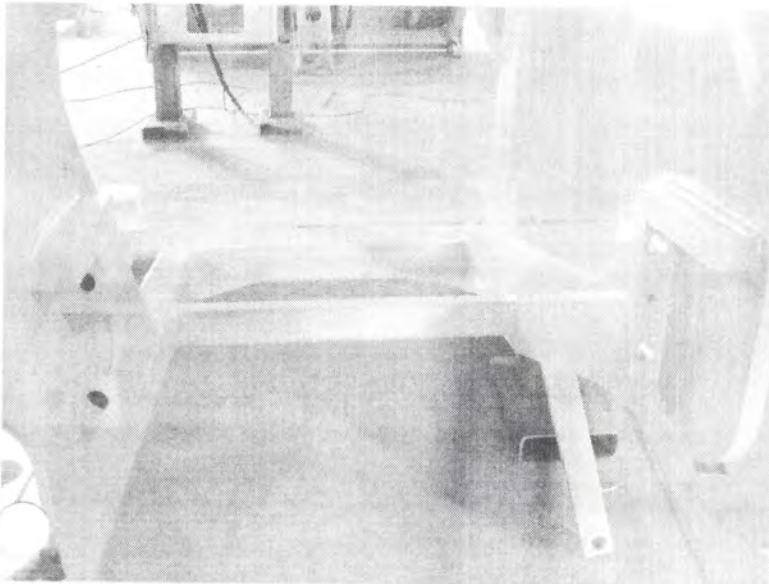


Rear frame of the 823 shows the horizontal mounting brackets for the axle assembly. 1 x 9" bolts are used to mount the assembly to the frame.

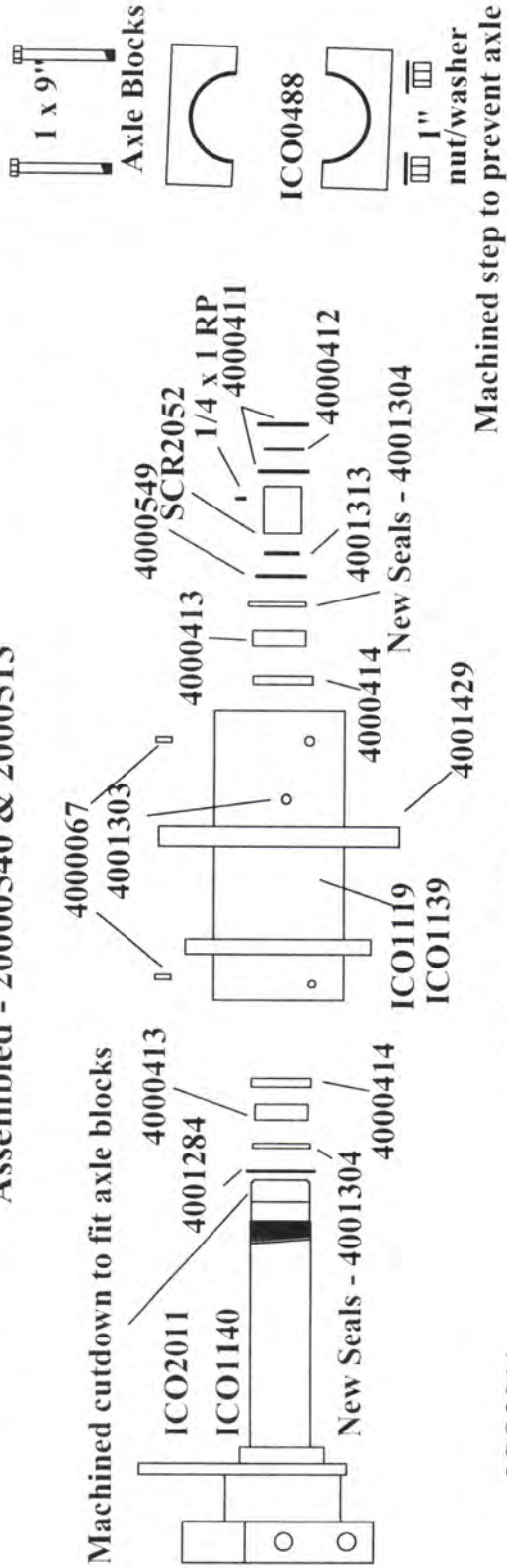
NOTE: The axle clamp mounting bolts are placed horizontally to aid in installation/removal of assy.

A thin walled socket with a max of 2 1/16"OD and an extension of at least 24" is needed to perform this operation properly.

The assembled rear, with 26.5 tires on the outside and 23.5's of the inside. Along with the offset of the axles add a larger footprint for greater floatation.



Parts List For ICON Earthmovers With Individual Axles W/O Brakes Assembled - 20000540 & 2000513



- ICO2011 Axle Assembly 29"
- ICO1140 Axle Assembly 33"
- 4001313 Snap Ring
- 4001304 Bearing Seal CR42627
- 4000413 Bearing, Timken Cone
- 4000414 Bearing (Race) Timken Cup
- ICO1139 Hub 34"
- ICO1119 Hub 29"
- 4000549 Hyd. O-Ring
- SCR2052 Axle Spacer
- 4000412 Bearing, Lock Washer
- 4000411 Bearing Nut
- 4001303 Zerk - 5psi relief
- 4000720 Adaptor 1/8-27-1/8mpt 90 el
- 5001064 Hyf - coupling 1/8" pipe
- 5001091 Hyf - nipple 1/8" x 11"
- 5001065 Hyf - nipple 1/8" x 9"
- 4001429 Rotor

Machined step to prevent axle side movement

Brake Fittings/Hose Package For 800 Series Block is located on upper rear frame.



If tandem unit, (2) 5001015
instead of plug. (5000355)

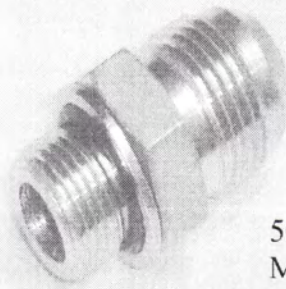
Item #	Description	Qty	Ref. #
5000919	Hyf-Adap 6MB-6MB	4	1
5000903	Hyf-Adap 6FB-10MB	4	2
5000997	Hose - 4MB-4M3Kx98"-6MB	4	3
5000845	Pioneer 1/2" Female End	4	4
5000920	Hyd-Adap 8MB-6FB	4	5
5000355	Hyd-Plug 8MB	1	6
5000907	Brake Coupler VF-0/1815	1	7
5001015	Hyf-Adap 8MB-8FFORX (2 if tandem)	1	8
5000835	Pioneer Male End 8010-16P 10FB	4	9
5000906	Hyd-Adap JIC to M 7400-10-18	1	10
5000996	Hose - 8MFFOR-8M3Kx538"-10FJX	1	11
5001016	Hose-10FJX-8M3Kx65-8MFFOR (#12 used on tandem)	1	12

Brake Components

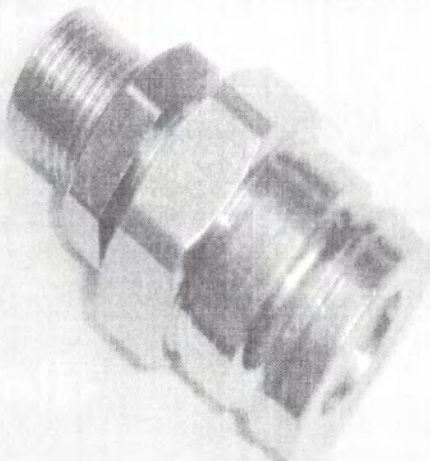
Used on all ICON Earthmovers
Equipped with Brakes



Front Brake Coupler
5000907
(Faster VF1815F-0.4M)



5000906
M18x1.5MWO-10MJ

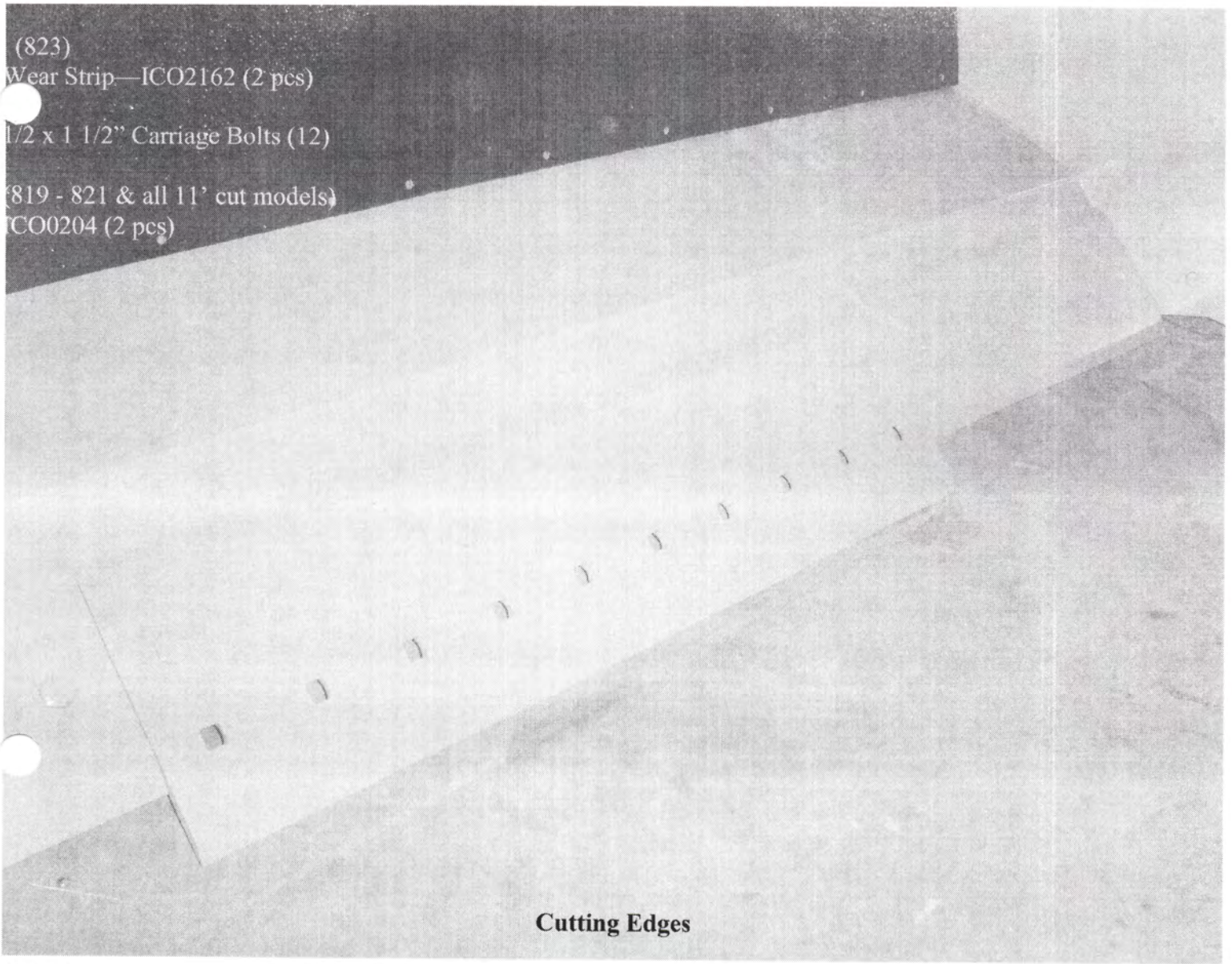


Rear Brake Coupler
5000908
(Faster, VF-7/1815-M)

The male end is mounted on the rear of the lead scraper. (If a tandem package is ordered).

It is standard on the AGCO Challenger tractors, if equipped with the brake package.

800 Series Cuttings Edges & Components



Cutting Edges

Location	Dimensions	#	CAT #
Side (2)	7/8 x 13 x 48	4001051	
Side (2)	7/8 x 13 x 35.75	4000851	178-4080
Center	7/8 x 16 x 60	4000951	174-8001
If a straight cut for finish work is required, a 13" center blade is available from CAT			
Center SC	7/8 x 13 x 60	4000619	4T6620
Center	7/8 x 19 x 60 (More aggressive cut)	4001511	

Bolts Per Blade

4000851	6
4000951.....	10

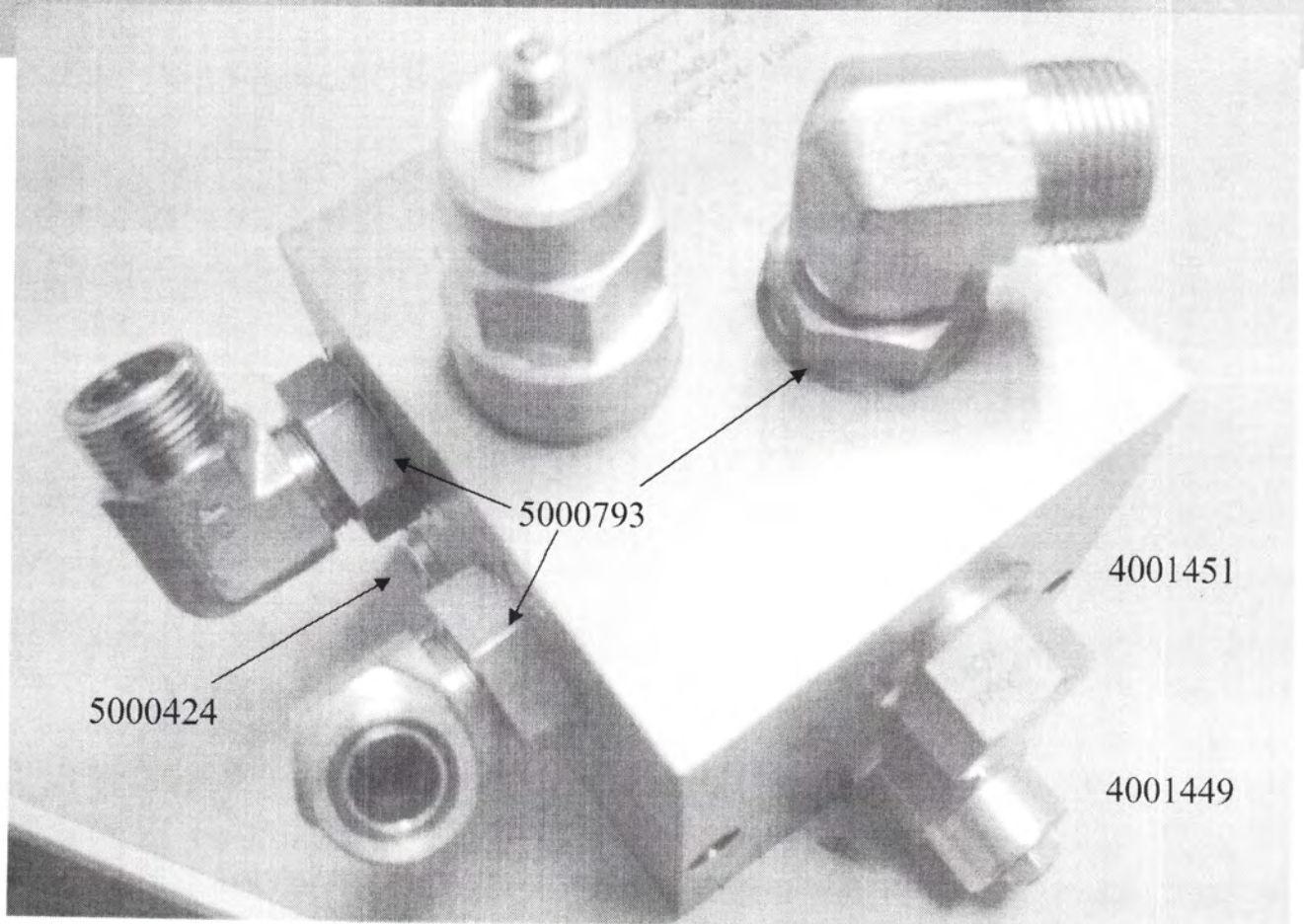
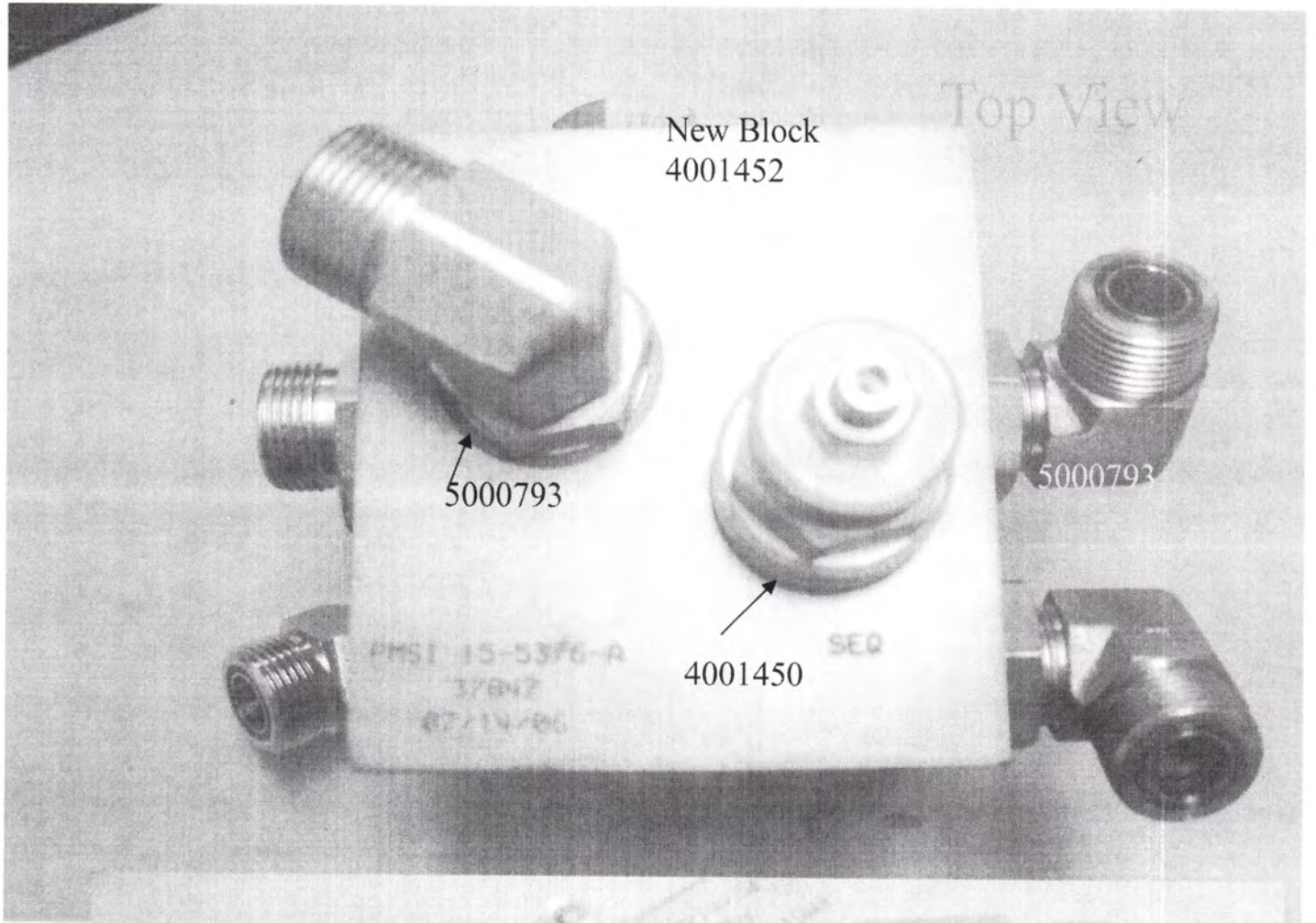
Cutting Edges
 1 x 2 1/2" gr. 8 Plow Bolt
 1" gr. 8 Jam Nuts
 1" Hardened Flat Washers

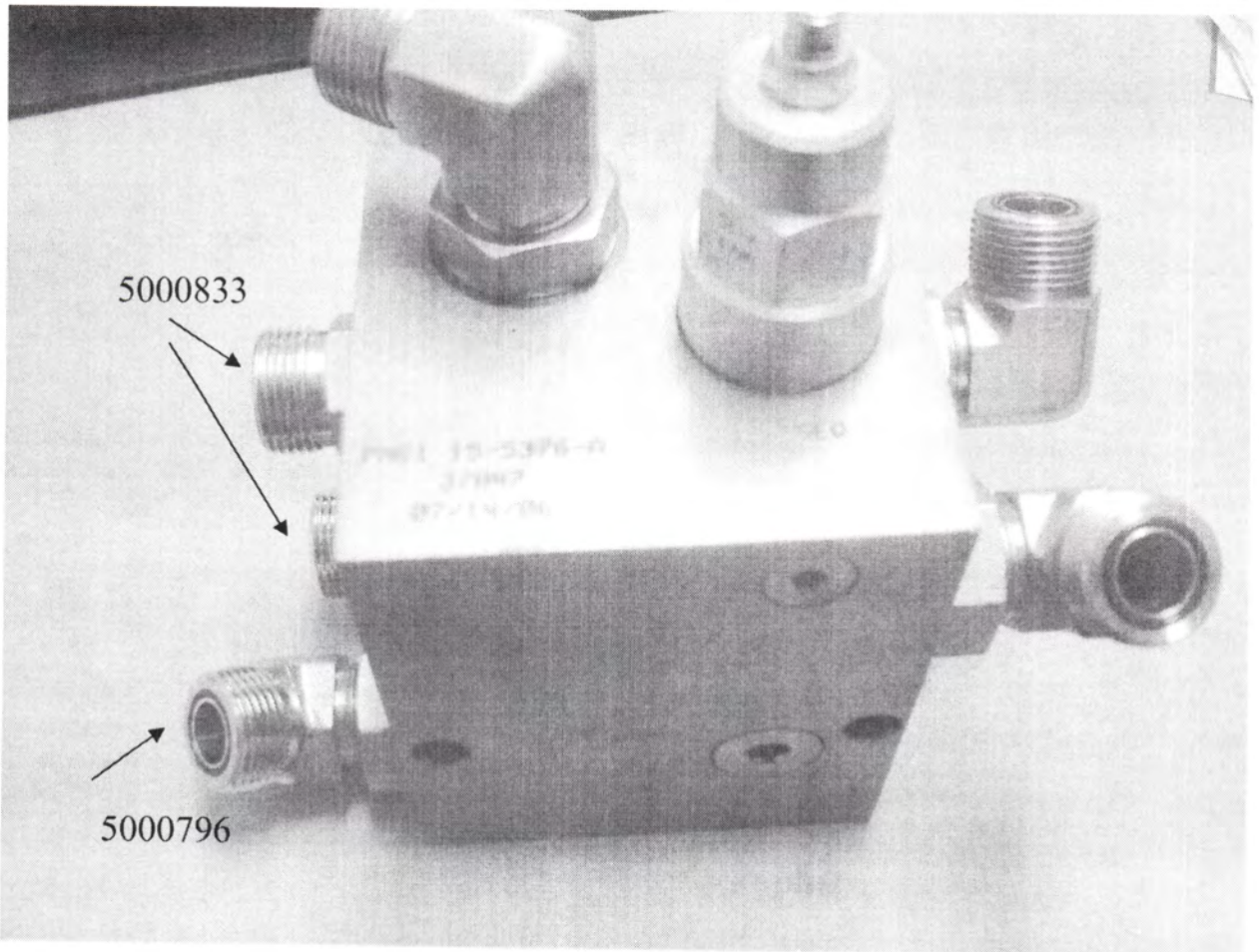
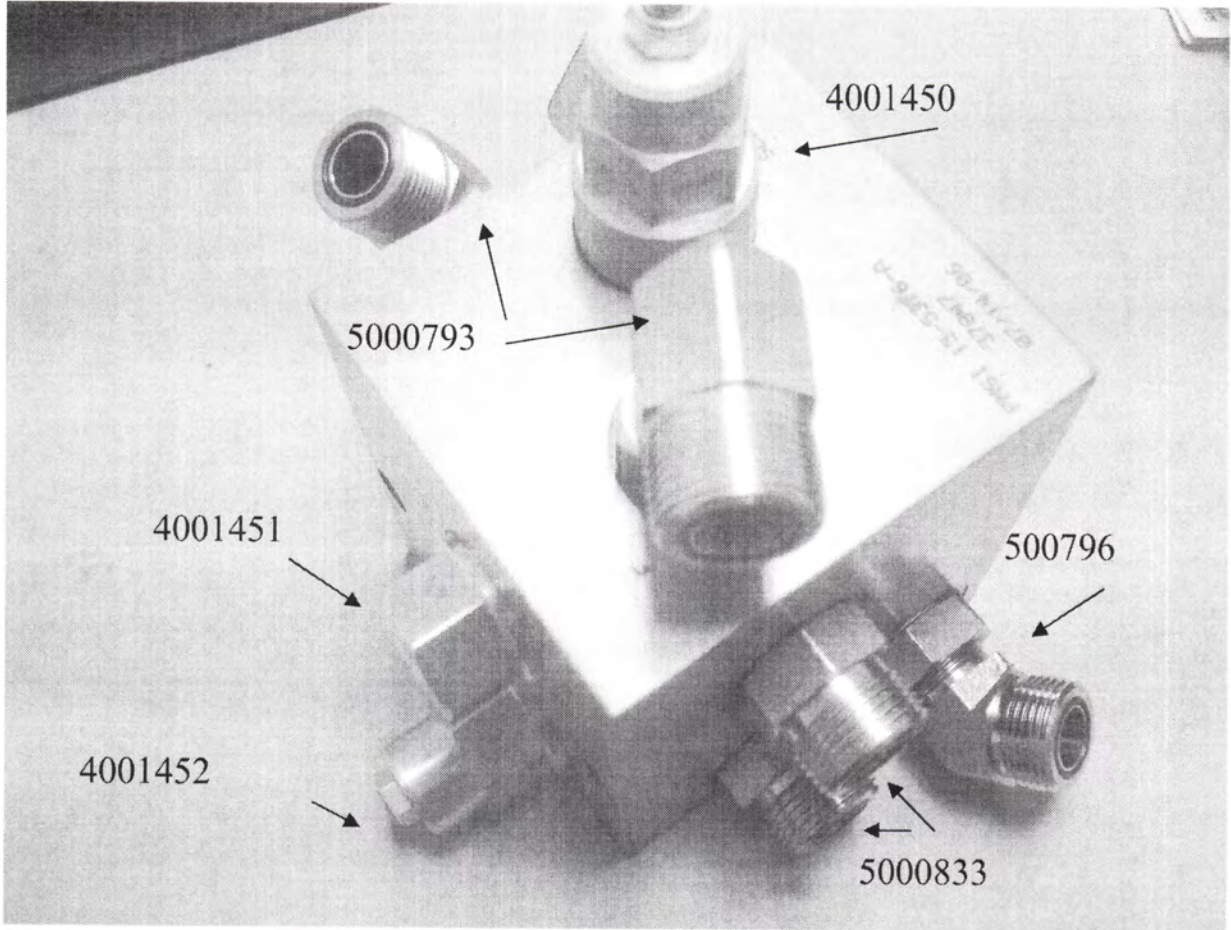
Side Cutting Edges

ICO0206L & R
 ICO2172/2173

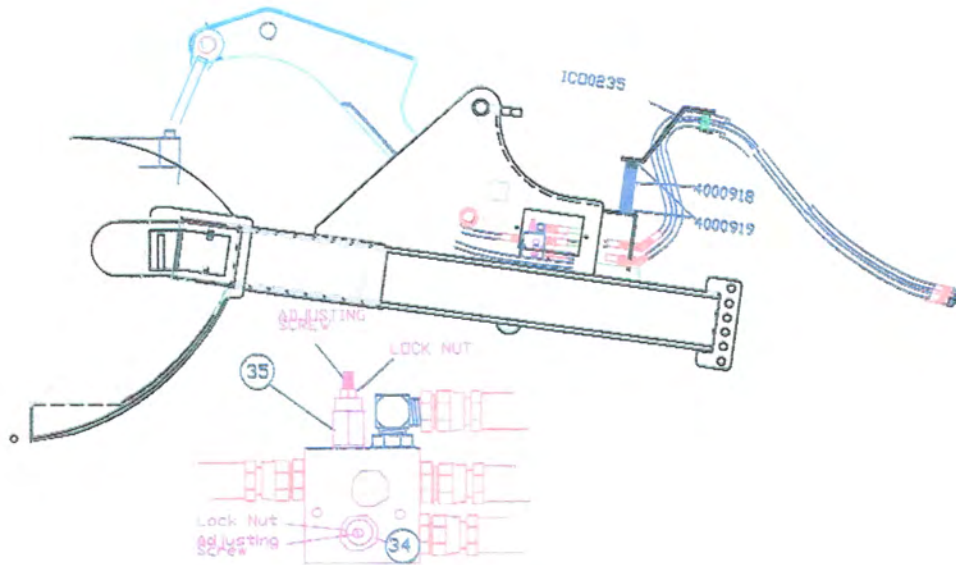
Each side requires (5) 3/4 x 2 1/2" Plow Bolts, Hard Washers and Hex Nuts.
 4" longer for deeper cut

Current valve block and fittings for Model 823 Earthmovers,





Valve Adjustment 2 - valve hydraulics



Valve Adjustment

Problem:

Push wall comes forward before gate is fully up.

Answer:

- *Loosen locknut on top of valve
- *Adjust sequence valve 1/4 turn clockwise and check performance.
- *Repeat until remedied
- *Retighten locknut

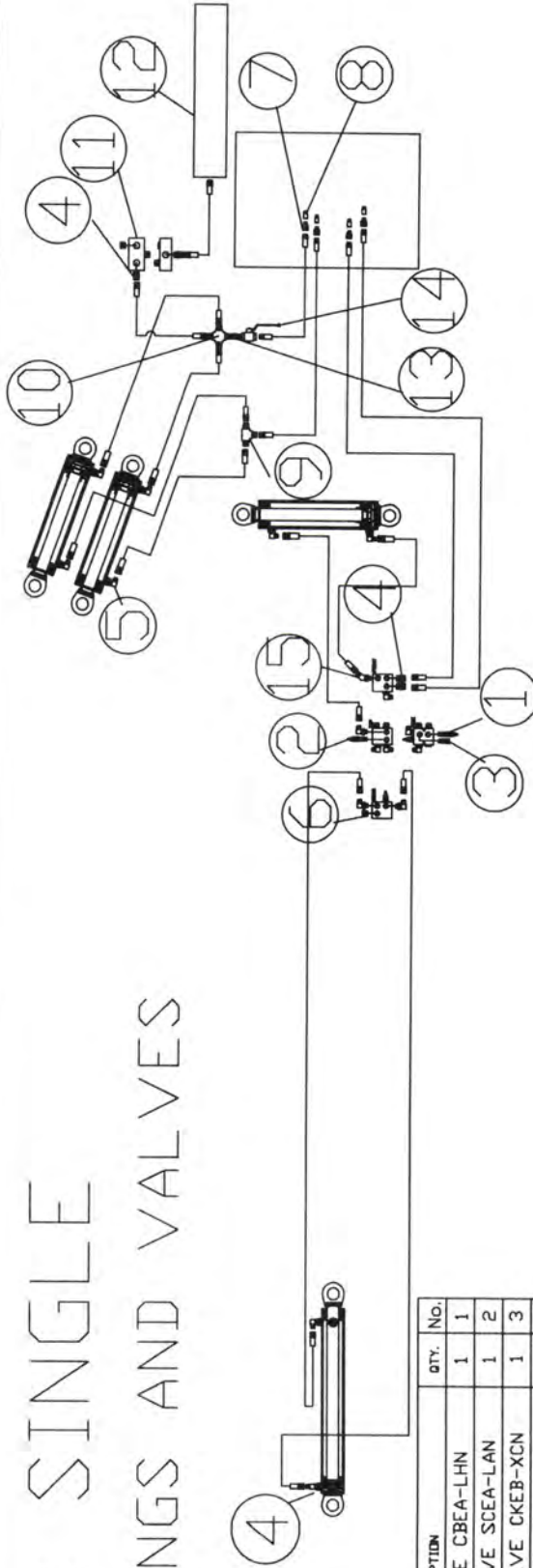
Problem:

Gate comes down before push wall is fully back.

Answer:

- *Adjust counterbalance valve (located on side of valve block in tongue)
- *Loosen locknut on top of valve
- *Adjust counterbalance valve 1/4 turn counterclockwise and check performance.
- *Repeat until remedied
- *Retighten locknut.

823 SINGLE FITTINGS AND VALVES



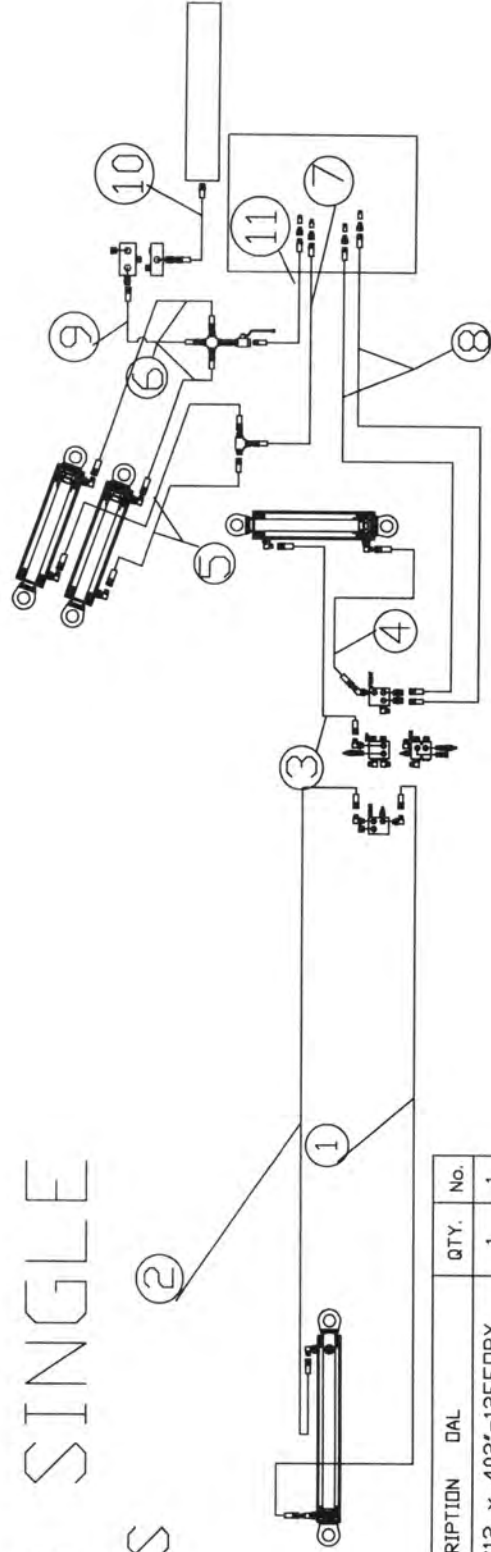
COMPONENT	DESCRIPTION	QTY.	NO.
4000924	COUNTER VALVE CBEA-LHN	1	1
4000925	SEQUENCE VALVE SCEA-LAN	1	2
4000623	PILOT CHK VALVE CKEB-XCN	1	3
5000833	12MB-12MFFDR	5	4
5000793	12MFFDR-12MB90	11	5
5000424	12MB-HH PLUG	2	6
5000836	ADAP 10MB-12FB	4	7
5000835	PIONEER 7/8 M END 8010-16P	4	8
5000983	TEE, 12MFFDR	1	9
5001013	CROSS 12MFFDR	1	10
4001314	ACCUM. VALVE VS4BCBF9	1	11
4001267	2 GALLON ACCUM. TUBUL 4.7	1	12
5001017	12MB-12FFDRX	1	13
4001420	HYD BALL SHUT OFF VALVE	1	14
5000796	HYF-45, 12MFFDR-12MB45	1	15

5001131 FITTINGS
5001132 HOSE

Optional Block/Valves

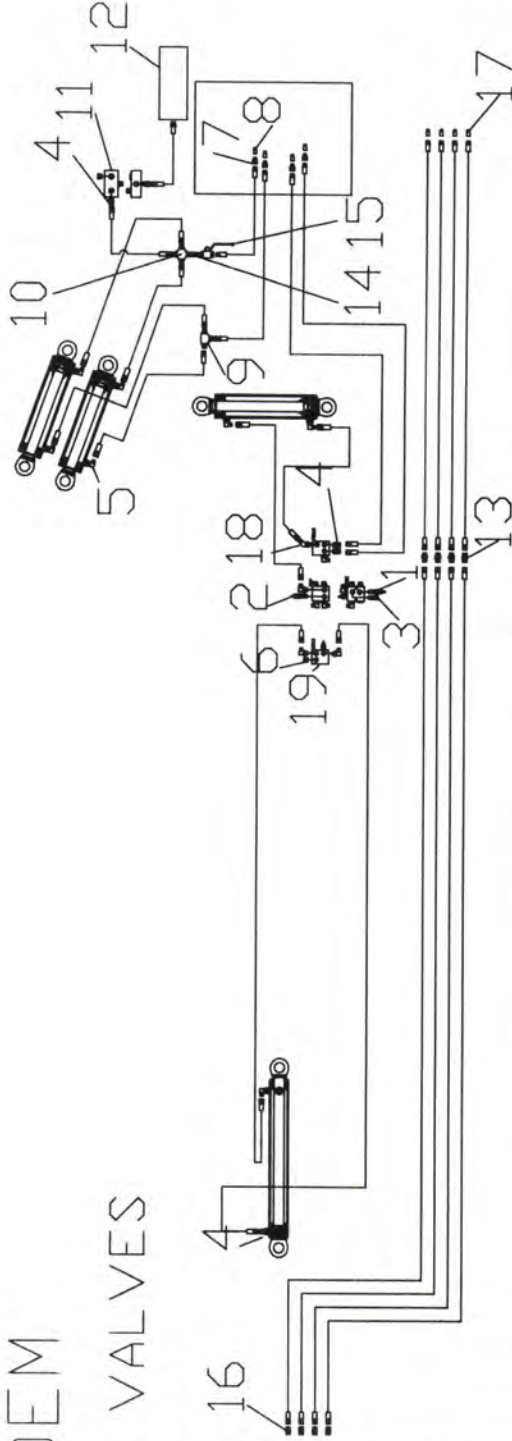
COMPONENT	DESCRIPTION	QTY.	NO.
4001449	Counter Valve CBGB-LHN	1	1
4001450	Sequence Valve SCGA-LA	1	2
4001451	Pilot Chk Valve CKGB-XCN	1	3
4001452	Valve Block 15-5376	1	19

823 SINGLE HOSES



COMPONENT	DESCRIPTION	DAL	QTY.	No.
5001133	12FFDRX-12C12	x 402'-12FFDRX	1	1
5001134	12FFDRX-12C12	x 438'-12FFDRX	1	2
5000988	12FFDRX-12C12	x 53'-12FFDRX	1	3
5000989	12FFDRX-12C12	x 57'-12FFDRX	1	4
5000990	12FFDRX-8C12	x 16.75'-12FFDRX	2	5
5000991	12FFDRX-8C12	x 41.25'-12FFDRX	2	6
5000992	12FFDRX-12C12	x 152.5'-12MB	1	7
5000993	12FFDRX-12C12	x 203.5'-12MB	2	8
5000998	12FFDRX-12C12M	x 80'-12FFDRX	1	9
5001142	16MB-12C12M	x 73'-12FFDRX	1	10
5001018	12MB-12C12	x 147'-12MB	1	11

823 TANDEM FITTINGS AND VALVES

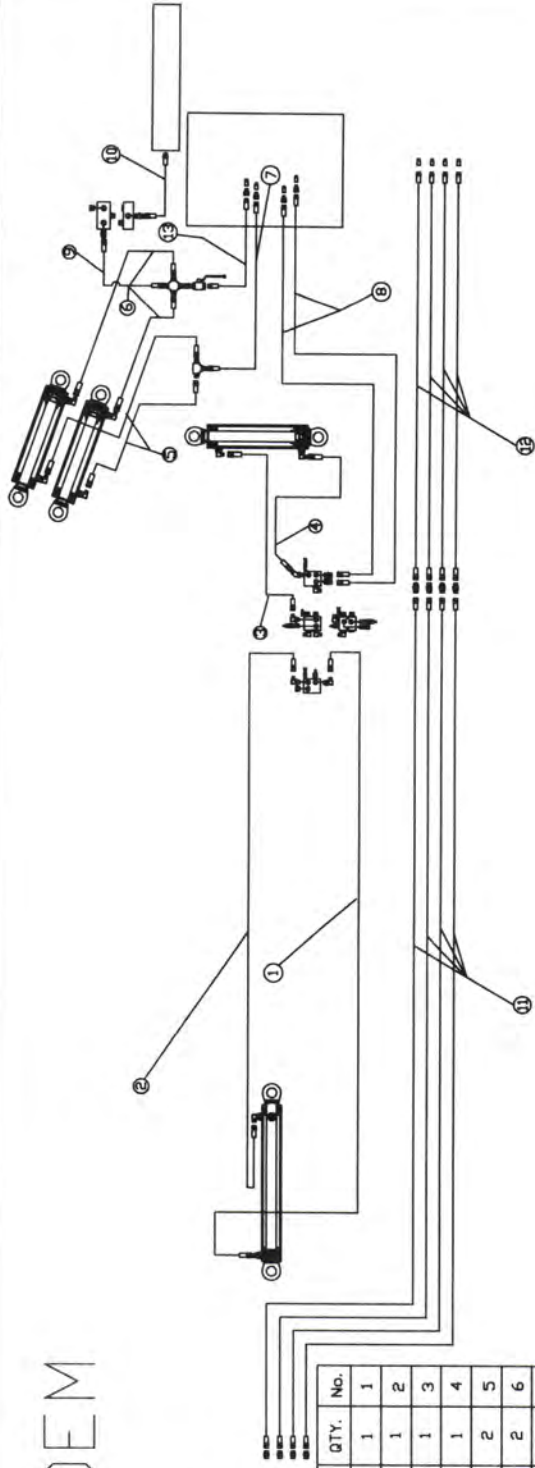


2000610 TANDEUM KIT
5001136 HOSE
5001137 FITTINGS

COMPONENT	DESCRIPTION	QTY.	NO.
4000924	COUNTER VALVE CBEA-LHN	1	1
4000925	SEQUENCE VALVE SCEA-LAN	1	2
4000623	PILDT CHK VALVE CKEB-XCN	1	3
5000833	12MB-12MFFDR	6	4
5000793	12MFFDR-12MB90	11	5
5000424	12MB-HH PLUG	2	6
5000836	ADAP 10MB-12FB	4	7
5000835	PIONEER 7/8 M END 8010-16P	4	8
5000983	TEE, 12MFFDR	1	9
5001013	CROSS 12MFFDR	1	10
4001314	ACCUM. VALVE VS4BCBF9	1	11
4001267	2 GALLON ACCUM. TUBUL 4.7	1	12
5001011	12MFFDRBH	4	13
5001017	12MB-12FFDRX	1	14
4001420	HYD BALL SHUT OFF VAVLE	1	15
5001001	HYD-PIONEER 3/4 MALE END-10FT 600-10-10	4	16
5000977	HYD-PIONEER FEM 3/4 HYD-12MB	4	17
5000796	HYF-45, 12MFFDR-12MB45	1	18

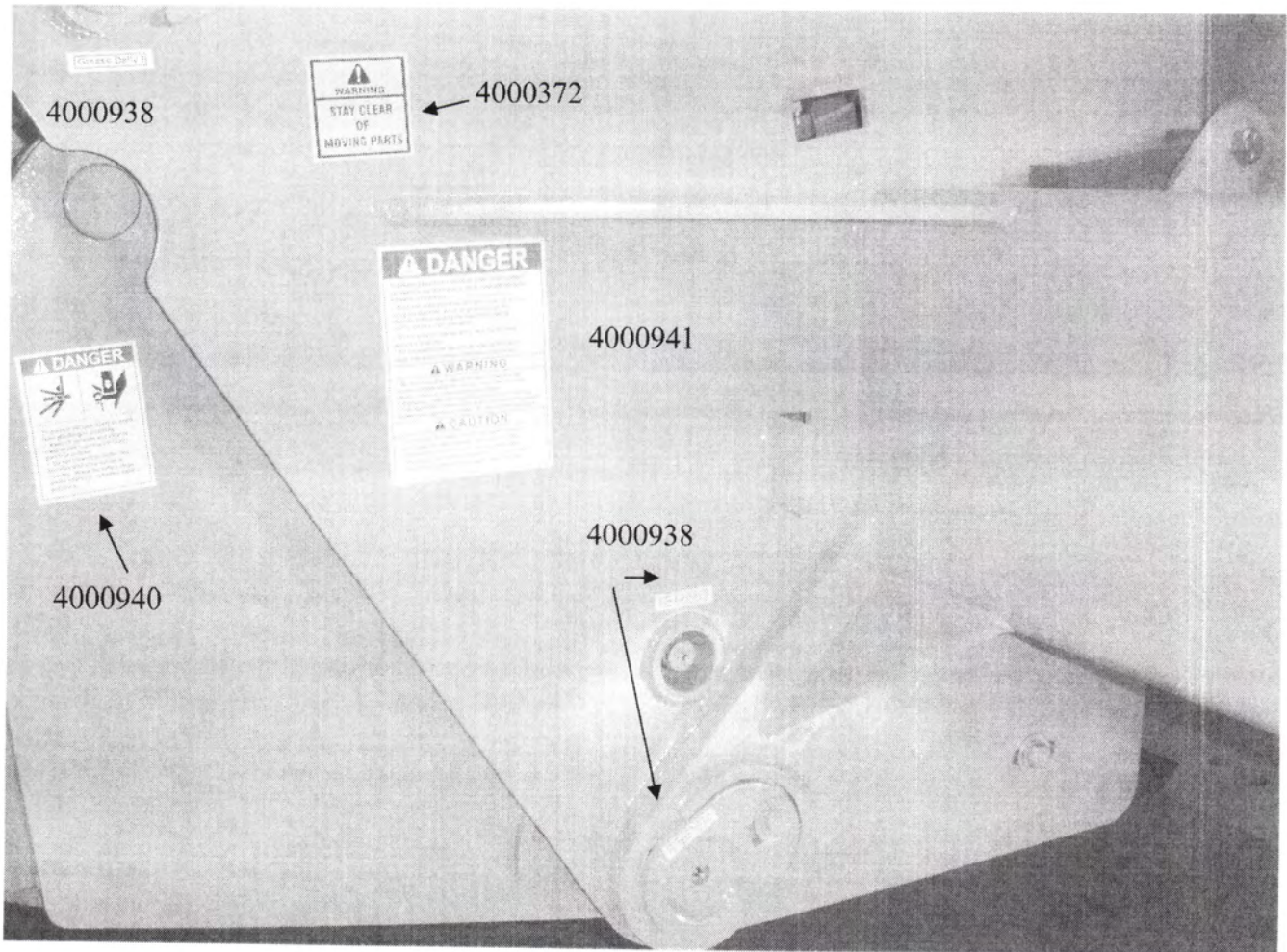
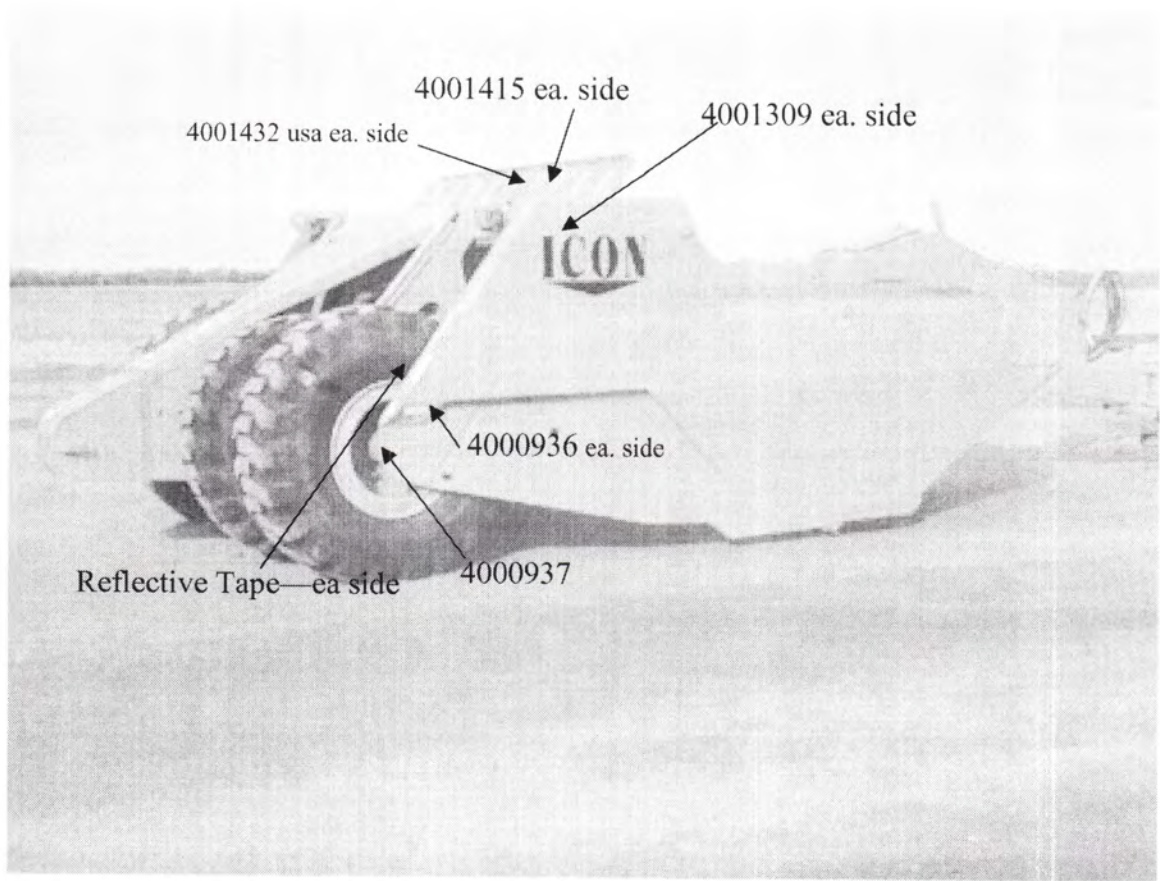
Optional Block/Valves	DESCRIPTION	QTY.	NO.
4001449	Counter Valve CRGB-LHN	1	1
4001450	Sequence Valve SCGA-LA	1	2
4001451	Pilot Chk Valve CKGB-XCN	1	3
4001452	Valve Block 15-5376	1	19

823 TANDEM HOSES



COMPONENT	DESCRIPTION	DAL	QTY.	No.
5001133	12FFDRX-12C12	x 402'-12FFDRX	1	1
5001134	12FFDRX-12C12	x 438'-12FFDRX	1	2
5000988	12FFDRX-12C12	x 53'-12FFDRX	1	3
5000989	12FFDRX-12C12	x 57'-12FFDRX	1	4
5000990	12FFDRX-8C12	x 16.75'-12FFDRX	2	5
5000992	12FFDRX-12C12	x 152.5'-12MB	1	7
5000993	12FFDRX-12C12	x 203.5'-12MB	2	8
5000998	12FFDRX-12C12M	x 80'-12FFDRX	1	9
5001142	16MB-12C12M	x 73'-12FFDRX	1	10
5001135	16FJX-12C12M	x 470'-12FFDRX	4	11
5001010	12FFDRX-12C12M	x 160.5'-12MB	4	12
5001018	12MB-12C12	x 147'-12MB	1	13

823 Decal Locations



Part #	Qty	Description
4000931	5	Warning—High Pressure
4000934	2	Loading Hard/Loose Material
4000935	1	Safety/Operation Manual
4001435	2	Tire Pressure/Torque (29.5 tires)
4000937	2	3 Pumps Of Grease Weekly
4000938	27	Grease Daily
4000940	5	Danger Pinch/Crush
4000396	1	Gate Gauge (A-B-C-D)
4000941	1	Danger—To Prevent a Hazardous Situation
4000702	4	18" Reflective Tape
4000372	3	Warning Moving Parts
4001248	1	This Machine is Designed To Be Pulled By (600)
4001254	1	Icon Axle Nut Wrench
4000960	4	ICON 4"
4001309	2	ICON 11 x 24
4001415	2	American Flag
4001418	1	823 Raise/Lower
4001432	2	Made In USA
4001433	1	Hyd. Shutoff Valve
4000949	1	Hyd. Color Codes
4001445	3	Safety Stops
4001446	1	Warning Remove Safety Stops
4001447	1	Caution Before Any Repair



Intertek

Equipment from Landoll Corporation is built to exacting standards ensured by ISO 9001 registration at all Landoll manufacturing facilities.

Model 825 Scraper Service and Parts Manual

Re-Order Part Number F-970-0118

LANDOLL CORPORATION

1900 North Street

Marysville, Kansas 66508

(785) 562-5381

800-428-5655 ~ WWW.LANDOLL.COM



Copyright 2014. Landoll Corporation

"All rights reserved, including the right to reproduce this material or portions thereof in any form"