




2022 Product Catalog



Property maintained by Chris Hattasch - West Linn, Oregon, USA.

Table of Contents

Message from Bob Walker	1	ROPS	41
Customer Profile: Residence, Johnny Campbell	2	Single-Stage Snowblower 36"	41
The Walker Advantage		Spyker Spreader Attachment	41
Front-Mount Deck	4	Dethatcher	42
Short Deck Coupling	4	Boom Sprayer	43
Interchangeable Decks and Add-ons	5	48" Dozer Blade	43
Tilt-Open Bodies and Tilt-Up Decks	5	Add-ons: Options	
Compact	6	Comfort Seat	44
Precision Steering and Handling	6	Suspension Seat	44
Grass Handling System® (GHS)	7	Armrests	44
Integrated Components	7	Utility Bed	45
Transmission Oil Performance System (TOPS)™	8	Headlights	45
Kohler PRO 300-Hour Extended Life Oil and Filter	9	Cup Holder	45
Customer Profile: Birch Landscaping	10	Instrument Panel Cover	45
Models		Power Dump	46
Model S	12	Hi-Dump®	46
Model C	14	Large Hole Screen	47
Model T	16	No-Catch Deflector	47
Model D	18	GHS Blower Lockout	47
Model R	20	Dump Bag	47
Model B	22	Dump Bins	47
Model H	24	Deck Height Adjuster	48
Customer Profile: Residence, Chris Hattasch	26	Deck Height Washers	48
Decks		Curb Jumper	48
Mulching Decks and Kits	28	Power Tilt-Up®	49
Collection Decks	29	Deck Lift	49
Side Discharge Decks	30	Break Away Blades	49
Rear Discharge Decks	31	Deck Cuff	50
Multi-Deck	32	Spread Axle Tail Wheel	50
Deck Add-ons	32	Dual Tail Wheel	50
Deck Compatibility	32	Single Wide Tail Wheel	51
Customer Profile:		Adjustable Footrests	51
Southern Resources of Georgia, Inc.	34	Tail Wheel Lock	52
Add-ons: Implements		Big Tire Kit	52
Implement Hitch	36	18 x 7-8 Turf Tire	53
Option: Tail Weights	36	18 x 7-8 Directional AT Tire	53
Rotary Broom	37	18 x 8.5-10 Turf Tire	53
Dozer Blade (48" or 60")	38	18 x 8.5-10 AT Tire	53
Loader Bucket	38	18 x 9.5-8 Turf Tire	53
Debris Blower	39	18 x 10.5-10 Turf Tire	54
Two-Stage Snowblower (42" or 50")	39	18 x 11-10 AT Tire	54
Add-ons: Attachments		22 x 10.5-12 Turf Tire	54
Hard Cab	40	23 x 10.5-12 AT Tire	54
Soft Cab	40	23 x 10.5-12 Directional AT Tire	54
		Pneumatic Deck Tire	55
		Semi-Pneumatic Deck Tire	55
		Tire Chains	55
		Add-on Compatibility	56
		Walker Mower Specifications	Back Cover



Since my dad, brother, and I designed the first Walker Mower in 1977, it has always been intentionally different from other lawn mowers. At the time, my family was frustrated with the challenges we were having with mowing our own lawns quickly, easily, and with satisfying results. There was simply no riding mower available that could mow the way we wanted, so we designed and built our own. Like my dad always said, "If you can't buy it, build it," and so we did.

Over the years we have continued to improve the design of the Walker Mower, with each change improving the Walker's agility, ease of use, and cut quality. Our family has set a high standard of performance and every aspect of the Walker Mower is created with that standard in mind.

Today, Walker Mowers are American-made and hand-built with pride in Fort Collins, Colorado. When you buy a Walker, you are not only buying a high-quality product, you are joining the Walker Mower family.



Bob Walker

Bob Walker, Chairman
Walker Manufacturing



“There’s not one piece of this garden that I can’t mow with the Walker—it’s all done with a Walker. That machine is amazing. It will virtually turn on a six-pence.”

Johnny Campbell (left)

Johnny and Pauline Campbell
*Residence (Horonui), Poukawa,
New Zealand*





Customer Profile:
Johnny and Pauline Campbell

Johnny and Pauline Campbell live on 50 acres of pristine country near Poukawa, New Zealand called Horonui. After retirement from farming on the same land, they have created a beautiful, English style garden with almost 5 acres (2 hectares) of turf to mow.

Johnny says the Walker Mower is the perfect fit for their property. "There's not one piece of this garden that I can't mow with the Walker—it's all done with a Walker," explains Johnny. "That machine is amazing. It will virtually turn on a six-pence."

According to Campbell, the true floating deck of the Walker complements his undulating garden designs. "Very few of the lawns are actually flat, so when you get out and mow, you can see the deck moving all the time," he says while motioning his hands up and down. "To get these results, that has to be normal I suppose."

"I enjoy mowing the lawns," grins Johnny. "It's just a really rewarding time to be able to sit there with my headphones on, put up music—it's brilliant."

Front-Mount Deck

Achieving a beautiful cut has been our focus from the very first Walker Mower design. Positioning the mowing deck in front of the machine is fundamental to producing high-quality results. The front-mount deck of the Walker reduces impact on the turf prior to cutting, resulting in a more consistent, carpet-like finish. This result is achieved by transferring weight from the deck caster tires which minimizes matting of the grass.

The Walker torsion-flex carrier frame allows the deck to freely articulate and flex laterally, producing a smooth cut, even over complicated ground contours. This makes Walker Mowers ideal for mowing uneven turf.



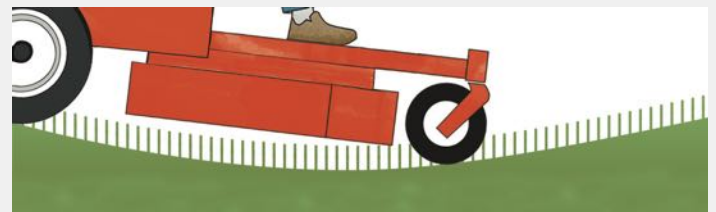
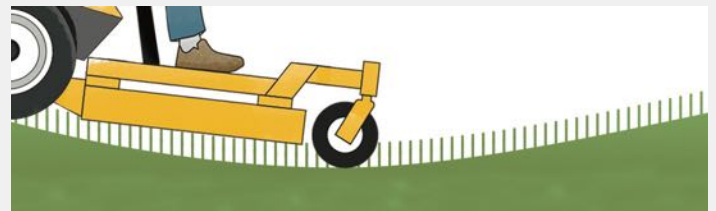
Short Deck Coupling

Front-mount decks also create a shorter distance between the contact point of the drive tire and the contact point of the front caster tire, allowing Walker decks to precisely follow ground contours. Compared to mid-mount hanging decks, Walker mowing decks scalp less and leave less uncut grass in the valleys of ground contours.

SCALP LESS GRASS ON THE CREST



CUT MORE GRASS IN THE VALLEY



Interchangeable Decks and Add-ons

Whether handling grass, leaves, debris, or snow, Walker Mowers are designed for year-round productivity. On most models, decks can easily be switched for larger or smaller collection, mulching, or discharge decks to suit the task at hand. Plus with dozens of add-ons, such as a dethatcher, dozer blades, snowblowers, and enclosed cabs, the Walker is one of the most versatile mowers on the market.



Tilt-Open Bodies and Tilt-Up Decks

Each Walker features a tilt-open body, quickly exposing the drive belts, electrical system, engine, and drivetrain, making service and maintenance easy. No special tools or equipment are needed. Simply release the body latch, and the gas spring assisted enclosure opens up for unobstructed access to all of the Walker's working components.

All Walker decks quickly tilt-up, making maintenance tasks safe and easy. It takes seconds to unlock, lift, and secure the deck in an up position, providing access to the blades, housing, and chute. H models also have an optional Power Tilt-Up® deck lift. Walker tilt-up decks also minimize wasted space when storing the Walker Mower.

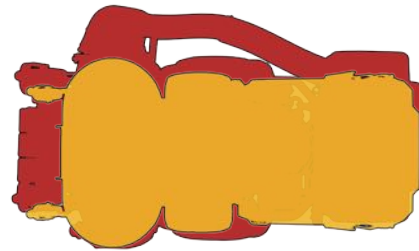




Compact

Most lawns have areas with low hanging branches, narrow gates, or other obstacles that are difficult to mow. The compact size of the Walker Mower gives you the ability to mow challenging properties easily and efficiently.

The Walker Mower has a small footprint designed to get into and out of tight places like gates, between beds and trees, fence corners, and other similar landscape features.



Walker T27i with 52" deck footprint: 53" (134.62 cm) W 95" (241.30 cm) L
versus a Z Master with 52" deck: 68" (172.72 cm) W 102" (259.08 cm) L

Precision Steering and Handling

With an operator-friendly combination of finger-tip steering and the Forward Speed Control, the Walker Mower goes precisely where you want it to with little effort.

FORWARD SPEED CONTROL

Once in the drive position, the Forward Speed Control uses a friction lock to work as a cruise control, allowing you to control the mower by simply applying pulling pressure on the steering levers. To stop, pull the Forward Speed Control back to the Neutral-Park position.

STEERING LEVERS

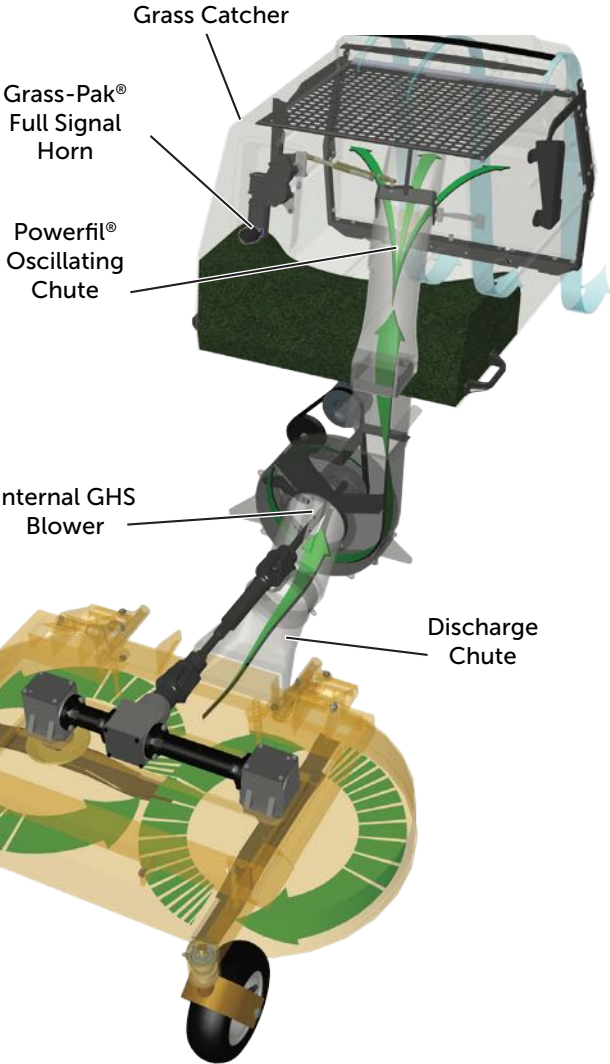
Walker Mower steering levers take control the moment pressure is applied. Each steering lever is spring-dampened, providing smooth machine operation. You can easily steer the machine by controlling both levers with a single hand, only using gentle fingertip pressure. The steering system is designed for precision steering and handling, using optimal linkage geometry and high-quality components.



Grass Handling System® (GHS)

Walker invented the internal Grass Handling System® on its first mower, and it remains the most efficient way to vacuum grass clippings, leaves, and debris from the lawn.

Collection decks move clippings to a center, rear discharge chute where an internal blower vacuums grass clippings and debris, and then blows it directly into a compact, rear-mounted grass catcher box. The PowerFil® oscillating chute evenly packs clippings, and the Grass-Pak® full signal alerts the operator when it is time to empty the catcher. To dump clippings, the operator simply lifts the catcher with the side handles, or utilizes the optional Power Dump or Hi-Dump® add-ons from the operator seat.



Pictured: S18 with optional Power Dump

Integrated Components

Walker Mowers are engineered to ensure the entire grass collection system is internal. This intentional effort has allowed Walker Mowers to retain their compact footprint. There are no bulky tubes or bags extending beyond the footprint of the mower. By positioning the GHS blower internally, a powerful vacuum action is achieved, leaving a carpet-like appearance to your lawn in spring, summer, and fall.



Internal GHS 12.75" (32.38 cm) Blower (Model S)

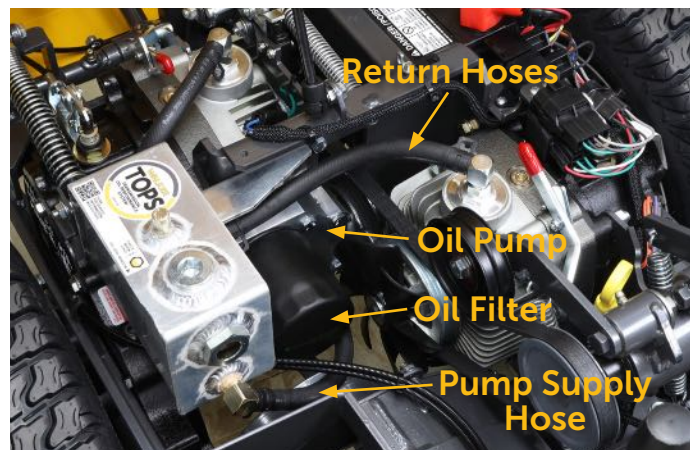


Internal GHS 10.5" (26.67 cm) Blower (Models C, T, D)

Transmission Oil Performance System (TOPS)[™]

TOPS[™] brings enhanced drivetrain protection and performance to Walker Mowers equipped with Eaton Model 7 hydrostatic transmissions by actively circulating and filtering the transmission system fluid every 38 seconds.

- A fully-machined, billet aluminum oil pump with integrated filter mount is driven by transmission drive belt and circulates filtered oil when engine is running
- Oil filter with premium fiberglass media made in the USA for Walker
- Remote aluminum oil reservoir increases oil capacity by 100% and reduces oil temperature
- Fully-synthetic oil formulated specifically for extended transmission life under high loads and in extreme ambient temperatures
- ISO-VG 220 viscosity oil for superior protection and performance
- Maintenance schedule adds 500-hour oil and filter change interval after the initial 100-hour break-in service
- Extended transmission warranty when serviced as directed, conditions apply



See more information online at walker.com/tops

TOPS[™] Oil

- Mobil SHC[™] 630
- 2.5 US Quart (2.4 L) system capacity
- Fully-synthetic oil for superior lubrication and long life
- More durable fluid film than conventional oils for improved wear protection
- ISO-VG 220 viscosity for improved lubrication across broad temperature range
- Increases safe oil operating temperature range by nearly 100°

TOPS[™] Oil Filter

- Premium fiberglass media provides extra capacity with superior filtration
- Effectively protects against contaminants greater than 10 microns
- Prevents cross contamination between hydrostatic transmissions
- High durability, anti-drain back valve and sealing gasket
- High quality, made-in-USA filter



Kohler PRO 300-Hour Extended Life Engine Oil and Filter

Kohler PRO 300-hour, extended life synthetic oil and filter provides unmatched protection for Walker Mowers equipped with Kohler engines. This 10W-50 fully-synthetic oil has a 3x longer life, extending oil changes while providing ideal engine protection in all-seasons and all-temperatures.

- 3X longer oil change interval
- Engineered by Amsoil exclusively for Kohler
- Fully-synthetic oil formulated specifically for extended oil change intervals in Kohler air-cooled engines
- Guaranteed 300-hour oil change interval on most KOHLER® gas engines past, present, and future
- 10W-50 viscosity for all season performance
- Extra corrosion inhibitor for seasonal storage and multi-season use
- Lower oil consumption than conventional oil
- Warranty approved for KOHLER engines



See more information online at walker.com/kohler-engine-oil

Kohler PRO Synthetic 10W-50 vs Conventional Auto Engine Oil (API-SN)

	Kohler PRO Synthetic 10W-50	Conv. Auto Oil (API-SN)
Guaranteed 300 hour oil change interval	✓	✗
Extra corrosion protection for seasonal storage	✓	✗
Multi-season operation	✓	✗
Superior performance for extreme cold and hot operation temperatures	✓	✗
Lower oil consumption	✓	✗



Customer Profile: *Birch Landscaping*

Second generation landscape contractor Tommy Birch of Harwich, Massachusetts (Cape Cod) was raised mowing lawns. It started when his dad (Tom) taught him how to run a Walker Mower at the local little league field. A few years later he came on full time at Birch Landscaping.

One constant for Tommy is that the Walker Mower has been Birch Landscaping's mower of choice since he first started even though they may have tried other mowers. "I love it just because you can make a property beautiful in a matter of minutes and the productivity year-round beats everything else I have used," explains Tommy, "Even during work in the fall and spring, the Walker is twice as fast."

Birch Landscaping's forte is the maintenance of residential properties which are often second homes, so attention to detail along with efficiency are the keys to success. "Getting in and around trees and onto the tight places on properties with the Walker saves so much time on weed whacking and other stuff," shares Tommy, "And the beautiful striping adds to our credibility."



"I love it just because you can make a property beautiful in a matter of minutes, and the productivity year round beats everything else I have used."

Tommy Birch
*Birch Landscaping,
Harwich, Massachusetts*





Model S

The Model S is the quintessential Walker Mower. Inspired by the original 1977 prototype, the Model S is simple and easy to operate and very efficient at mowing residential properties. With Walker's Grass Handling System®, a patented Blower Shaft PTO® design, and reduced weight and cost, the Model S is the perfect entry-level mower for experiencing Walker's signature beautiful cut and zero-turn productivity.



Model S Standard Features

- Precision Steering and Handling
- Forward Speed Control
- Grass Handling System® (GHS)
- 7 bushel (8.7 cu. ft.) grass catcher
- High capacity, commercial engine air filtration
- Hydro-Gear ZT3100 transmissions
- Tilt-up decks and tilt-open body
- Flexible deck-carrier frame
- 12.75 inch (32.38 cm) Thru-Shaft® PTO GHS blower
- Oscillating PowerFil® chute with Grass-Pak® full signal

Model S Popular Add-ons

- Power Dump
- LED Headlights
- Adjustable Footrests
- Dethatcher
- 48 inch (121.92 cm) Dozer Blade
- 36 inch (91.44 cm) Single-Stage Snowblower
- Spyker Spreader and Mount
- Comfort Seat with optional Armrests

S18

- 18 HP Briggs and Stratton Vanguard engine
- Commercial rated compact V-Twin with pressure oil lubrication
- 7.4 MPH (11.9 km/h) ground speed
- 4 gallon (15.1 liter) fuel tank
- Deck options: 5 collection, 4 mulching, 5 discharge



Popular Model S add-on, Dethatcher



Pictured: S18 with a 48 inch (121.92 cm) collection deck

See more details at: walker.com/model-s



Model C

The Model C is the original Walker commercial lawn mower. Since its introduction in 1986, the Model C has been continually refined and improved with the commercial operator in mind, especially those who maintain residential properties. The Model C is a compact and versatile mower with impressive productivity.



Model C Standard Features

- Precision Steering and Handling
- Forward Speed Control
- Grass Handling System® (GHS)
- 7 bushel (8.7 cu. ft.) grass catcher
- High capacity, commercial engine air filtration
- Eaton Model 7 transmissions with ductile cast iron gearbox final drives
- Tilt-up deck and tilt-open body
- Flexible deck-carrier frame
- 4 gallon (15.1 liter) fuel tank
- 10.5 inch (26.67 cm) GHS blower
- Oscillating PowerFil® chute with Grass-Pak® full signal
- Transmission Oil Performance System (TOPS)™
- Kohler PRO 300-Hour Extended Life Oil and Filter
- Well balanced for superior hillside stability

Model C Popular Add-ons

- LED Headlights
- Comfort Seat
- Dethatcher
- Operator Soft Cab
- Implement Hitch with electric ram lift
- 42 inch (106.68 cm) Two-Stage Snowblower
- Power Dump
- 48 inch (121.92 cm) Dozer Blade

C19

- 19 HP Kohler Command Pro CH620 engine
- 10.0 bushel (12.4 cu. ft.) grass catcher option available
- Deck options: 6 collection, 4 mulching, 7 discharge

C19i

- 19 HP Kohler Command Pro ECH630 EFI engine
- Superior fuel efficiency, startability, and performance
- Deck options: 7 collection, 4 mulching, 7 discharge



Pictured: C19i with a 42 inch (106.68 cm) collection deck

See more details at: walker.com/model-c





Model **T**

The Model T is the standard for what commercial operators expect from a lawn mower. Intended specifically for commercial use, every aspect of the Model T has been designed to meet the most demanding expectations of operators who want fast and easy mowing with beautiful results. It is the go-to Walker for commercial operations and a favorite among discerning customers.



Model T Standard Features

- Precision Steering and Handling
- Forward Speed Control
- Grass Handling System® (GHS)
- 10 bushel (12.4 cu. ft.) grass catcher
- Commercial air filter with remote air intake and turbine pre-cleaner
- Eaton Model 7 transmissions with ductile cast iron gearbox final drives
- Flexible deck-carrier frame
- Tilt-up deck and tilt-open body
- 4.7 gallon (17.8 liter) fuel tank
- 10.5 inch (26.67 cm) GHS blower
- Oscillating PowerFil® chute with Grass-Pak® full signal
- Transmission Oil Performance System (TOPS)™
- Kohler PRO 300-Hour Extended Life Oil and Filter

Model T Popular Add-ons

- Hi-Dump® grass catcher system raises 67 inches (170.18 cm) with automatic catcher door actuation
- Power Dump
- LED Headlights
- Dethatcher
- Implement Hitch with electric ram lift
- 42 inch (106.68 cm) Two-Stage Snowblower
- 48 inch (121.92 cm) Dozer Blade
- Spyker Spreader and Mount

T23

- 23 HP Kohler Command Pro CH680 engine
- Commercial mower with carbureted engine
- Comfort Seat with optional armrests
- Non-collection version is available
- Deck options: 7 collection, 5 mulching, 8 discharge

T27i

- 26.5 HP Kohler Command Pro ECH749 EFI engine
- Superior fuel efficiency
- Comfort Seat with optional armrests
- Non-collection version is available
- Deck options: 7 collection, 5 mulching, 8 discharge



Pictured: T23 with a 48 inch (121.92 cm) collection deck

See more details at: walker.com/model-t



Model *D*

The Model D is an industrial-grade Walker Mower with impressive power and agility. The Model D is the only diesel-powered Walker Mower equipped with the Walker Grass Handling System® (GHS). The Model D effortlessly handles the harshest mowing environments and extended running times without compromising efficiency or power.



Model D Standard Features

- Precision Steering and Handling
- Forward Speed Control
- Grass Handling System® (GHS)
- Automatic glow plug preheat
- Transverse engine mount
- Liquid-cooled with self-cleaning radiator
- Impressive 34 ft-lb torque
- High-capacity, commercial air filter with remote air intake and turbine pre-cleaner
- Eaton Model 7 transmissions with ductile cast iron gearbox final drives
- Grammer 4-way adjustable Suspension Seat
- Tilt-up deck and tilt-open body
- Flexible deck-carrier frame
- High output 40-amp charging system
- 10.5 inch (26.67 cm) GHS blower
- Oscillating PowerFil® chute with Grass-Pak® full signal
- Transmission Oil Performance System (TOPS)™

Model D Popular Add-ons

- Hi-Dump® grass catcher system raises 67 inches (170.18 cm) with automatic catcher door actuation
- Power Dump
- LED Headlights
- Dethatcher
- Operator Soft Cab
- Implement Hitch with electric ram lift
- 42 inch (106.68 cm) Two-Stage Snowblower
- 48 inch (121.92 cm) Dozer Blade



Popular Model D add-ons, 42 inch (106.68 cm) Two-Stage Snowblower and Operator Soft Cab

D21d

- 20.9 HP three cylinder Kubota D722 diesel engine
- 10 bushel (12.4 cu. ft.) grass catcher
- Deck options: 7 collection, 5 mulching, 8 discharge



Pictured: D21d with a 52 inch (132.08 cm) collection deck

See more details at: walker.com/model-d





Model *R*

The Model R is the perfect Walker Mower for residential properties. The belt-driven mower blades make operation smooth and quiet without compromising on the Walker Mower's distinct advantages. The Model R provides a premium Walker experience so you can bring home fast, easy, beautiful mowing.



Model R Standard Features

- Precision Steering and Handling
- Forward Speed Control
- 21 HP Kohler KT620 with Smart-Choke® technology for easy starts in hot and cold weather
- Hydro-Gear EZT transmissions
- Ogura® electric blade clutch and brake with easy pull/push switch operation
- Tilt-up deck and tilt-open seat
- 3 gallon (11.4 liter) custom molded, low profile fuel tank with integrated fuel level gauge
- Flexible deck-carrier frame
- Two drive belts with spring-loaded tensioning idler pulleys: ground drive and blade drive
- Kohler PRO 300-Hour Extended Life Oil and Filter

Model R Popular Add-ons

- Comfort Seat
- Tow Hitch
- Mulching Kit including bolt-in baffles and serrated mulching blades
- Accelerator® 3.3 bushel (4.2 cu. ft.) side-mount grass catcher
- LED Light Kit

3
YEAR
300
HRS

The Model R features a 3-year, 300 hour, caster-to-caster residential warranty. All parts and components are covered against manufacturer's defect.

R21

- 42 inch (106.68 cm), 48 inch (121.92 cm), or 54 inch (137.16 cm) deck cutting width configurations
- Belt-driven blades with dampened belt tensioner for smooth, quiet operation
- Custom blade spindles with grease zerks and bleed valve
- Molded rubber side discharge deflector shield



Popular Model R add-on, Accelerator® 3.3 bushel (4.2 cu. ft.) side-mount grass catcher



Pictured: R21 with a 48 inch (121.92 cm) side discharge deck

See more details at: walker.com/model-r





Model *B*

The Model B is compact and fast. It is a Walker Mower designed to run side discharge and mulch decks on difficult properties with hills, uneven terrain, and obstacles, all while leaving a beautiful cut. The Model B is configurable and versatile to meet a professional's expectations.



Model B Standard Features

- Precision Steering and Handling
- Forward Speed Control
- High-capacity, commercial engine air filtration
- Hydro-Gear ZT3100 transmissions
- 8 MPH (13 km/h) maximum ground speed
- Flexible deck-carrier frame
- Tilt-up deck and tilt-open body
- Kohler PRO 300-Hour Extended Life Oil and Filter

Model B Popular Add-ons

- Utility Bed
- LED Headlights
- Suspension Seat
- Big Tire Kit
- Tow Hitch
- Dethatcher
- 48 inch (121.92 cm) Dozer Blade
- 36 inch (91.44 cm) Single-Stage Snowblower
- Spyker Spreader and Mount
- Implement Hitch
- Loader Bucket

B23

- 22.5 HP Kohler Command Pro CH680 engine
- Commercial mower with carbureted engine
- Integrated electric Ogura® electric clutch with Soft Start
- Comfort Seat with optional armrests
- 4.7 gallon (17.8 liter) fuel tank
- Deck options: 5 mulching, 7 discharge

B27i

- 26.5 HP Kohler Command Pro ECH749 EFI engine
- Superior fuel efficiency and economy
- Integrated electric Ogura® electric clutch with Soft Start
- Comfort Seat with optional armrests
- 4.7 gallon (17.8 liter) fuel tank
- Deck options: 5 mulching, 7 discharge



Pictured: B27i with a 48 inch (121.92 cm) mulching deck. Shown with optional utility bed and optional suspension seat.

See more details at: walker.com/model-b





Model *H*

The Walker Model H stands alone in its class for high production mowing and improved return on investment. When fast, beautiful results are demanded on vastly different properties, turf types, and conditions, the Model H delivers for the most discerning operators. A variety of attachments and add-ons keep the Model H productive year-round with excellent results.



Model H Standard Features

- Precision Steering and Handling
- Forward Speed Control
- Grammer 4-way adjustable Suspension Seat
- High capacity, commercial engine air filtration
- Hydro-Gear ZT3400 transmissions
- 3 Model H-specific mowing decks with integrated Deck Height Adjuster and Adjustable Foot Rest
- Flexible deck carrier frame
- Tilt-up deck and tilt-open body
- 9.4 gallon (35.6 liter) fuel capacity, dual tanks
- Deck options: 2 mulching, 8 discharge

Model H Popular Add-ons

- Power Tilt-Up® deck lift
- Operator Hard Cab
- LED Headlights
- Deck arm adapter kit, allowing compatibility with 6 additional Walker mowing decks
- Implement Hitch with electric ram lift
- 50 inch (127.00 cm) Two-Stage Snowblower
- 60 inch (152.40 cm) Rotary Broom
- 60 inch (152.40 cm) Dozer Blade

H24d

- 23.7 HP Kohler KDW1003 diesel engine
- Rubber isolation engine mounts
- Liquid cooled with self-cleaning radiator
- Standard ROPS and Utility Bed

H27i

- 26.5 HP Kohler Command Pro ECH749 EFI engine
- Kohler PRO 300-Hour Extended Life Oil and Filter
- Superior fuel efficiency
- Lightest weight Model H, minimizing turf damage

H37i

- 37 HP Briggs and Stratton Vanguard Delphi fuel injected engine
- Superior fuel efficiency
- High output 50-amp charging system



Pictured: H37i (left, middle) and H24d (right) both with a 64 inch (162.56 cm) rear discharge deck

See more details at: walker.com/model-h





"I consider what the Walker does on my lawn to be surgical. I was looking for a lawn mower that would not only go exactly where I want it to go, but one that would also leave a beautiful cut—this is exactly what the Walker does."

Chris Hattasch

Residence, Falcon Point, West Linn, Oregon





Customer Profile:
Chris Hattasch

South of Portland, Oregon along the Willamette River is the quaint community of West Linn. Pass through the town toward the beautiful hillside and you will come to Falcon Point; a striking 27-acre property with 3 acres of finished turf that are maintained with a Walker Mower. Homeowner Chris Hattasch is the customer who maintains this pristine property and precisely manicures the turf about every three days.

As a former aerospace engineer, Chris has an eye for detail and a serious appreciation for precision. "I consider what the Walker does on my lawn to be surgical," explains Chris. "I was looking for a lawn mower that would not only go exactly where I want it to go, but one that would also leave a beautiful cut—this is exactly what the Walker does." Chris says the ability of the Walker to "hold the line" makes his finished results "works of art."

Recalling back to his aerospace work, Chris says build quality and components used on the Walker set it apart from any mower he has ever seen, and because the Walker is so easy to operate, Chris says mowing has become a "Zen experience of peacefulness and relaxation".

Decks

Each Walker deck is uniquely configured to meet a very specific performance need. Whether the most important consideration in looking for the perfect deck is cutting width, handling grass clippings, material capacity, or grass type, there is a Walker deck that will meet the specific maintenance need.



Pictured: B27i with a 48 inch (121.92 cm) mulching deck

Mulching Decks and Mulching Kits

Mulching decks are designed to efficiently re-cut material to fine particles and return them to the turf, leaving a beautiful cut.



M36
36 inch (91.44 cm)



M42
42 inch (106.68 cm)



M42B
42 inch (106.68 cm)



S42-R Mulch Kit
Mulch Kits for S42-R
(Model R only)



S48-R Mulch Kit
Mulch Kits for S48-R
(Model R only)



M48
48 inch (121.92 cm)



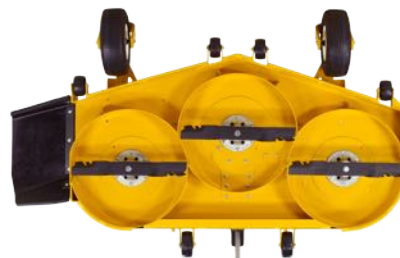
M52
52 inch (132.08 cm)



S52 Mulch Kit
Mulch Kit for S52 (P/N 8691)



S54-R Mulch Kit
Mulch Kit for S54-R
(Model R only)



S61 Mulch Kit
Mulch Kit for S61
(P/N 2692-1,
Model H only)



Pictured: D21d with a 52 inch (132.08 cm) collection deck

Collection Decks

Collection decks are compatible with the Walker Grass Handling System® (GHS) Models S, C, T, and D. Clippings are discharged from the deck through the internal blower and discharge chute, and stored in the GHS catcher box.



C36R
36 inch (91.44 cm)
Reverse Rotation



C42
42 inch (106.68 cm)
Standard Rotation



C42R
42 inch (106.68 cm)
Reverse Rotation



C48
48 inch (121.92 cm)
Standard Rotation



C48R
48 inch (121.92 cm)
Reverse Rotation



C52R
52 inch (132.08 cm)
Reverse Rotation

Standard vs Reverse Rotation

Standard rotation blades come together at the front of the deck, moving material directly into the rear discharge chute. Standard rotation decks are ideal for users who need to collect thick, heavy clippings, including leaves and other yard debris.

Reverse rotation blades come together at the rear of the deck, moving material around the edges of the deck before it is channeled into the discharge chute. Reverse rotation decks are ideal for users looking for exceptional cut quality, in mowing conditions without wet, heavy clippings or debris.



Pictured: H27i with a 61 inch (154.94 cm) side discharge deck

Side Discharge Decks

Compatible with all Walker Mowers, side discharge decks cleanly and evenly discharge cut grass from under the deck housing.



S36

36 inch (91.44 cm)
Gear Drive



S42

42 inch (106.68 cm)
Gear Drive



S42-R

42 inch (106.68 cm)
Belt Drive (Model R only)



S48-R

48 inch (121.92 cm)
Belt Drive (Model R only)



S48

48 inch (121.92 cm)
Gear Drive or Belt Drive



S52

52 inch (132.08 cm)
Belt Drive



S54-R

54 inch (137.16 cm)
Belt Drive (Model R only)



S56

56 inch (142.24 cm)
Gear Drive



S61

61 inch (154.94 cm)
Belt Drive (Model H only)



S62

62 inch (157.48 cm)
Belt Drive



S74

74 inch (187.96 cm)
Gear Drive



Pictured: H27i with a 64 inch (162.56 cm) rear discharge deck

Rear Discharge Decks

Designed specifically for Model H mowers with high production and fast mowing speeds, Walker rear discharge decks process clippings numerous times before cleanly and evenly discharging clippings out the back of the deck, leaving an evenly cut turf.



R52
52 inch (132.08 cm)
(Model H only)



R64
64 inch (162.56 cm)
(Model H only)

Gear vs Belt Drive

Walker gear-driven decks utilize aluminum or cast iron gearboxes with bevel Zerol gear technology for durable and quiet function. The timed blades provide exceptional cut quality and striping, and allow a compact design for improved trimming and maneuverability.

Walker belt-driven decks use a robust spindle and belt-tensioning idler design, and are best suited for rougher mowing conditions with debris or ground contact occurring. Walker belt-driven decks feature tool-free belt change and easy-to-maintain spindles and components.

Multi-Deck

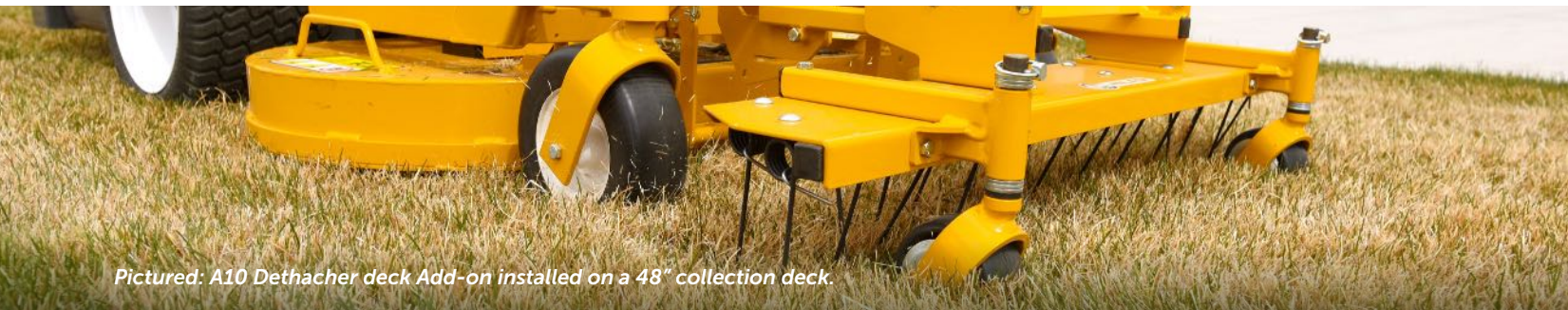
Designed for customers who need to collect and side discharge throughout the season, the Walker Multi-Deck is a cost effective way to have two mowing styles in a single deck. This quiet, belt-driven deck uses a torsion-flex carrier to freely articulate and follow ground contour for a beautiful cut. And, like other Walker decks, the underside and blades are accessible with the tilt-up function for easy transition between configurations and maintenance.



U48
48 inch (121.92 cm)
(Collection configuration)



U48
48 inch (121.92 cm)
(Side Discharge configuration)



Pictured: A10 Dethatcher deck Add-on installed on a 48" collection deck.

Available Deck Add-ons*

- Dethatcher attachment
- Adjustable Footrests
- Curb Jumper
- Boom Sprayer attachment
- Spyker Spreader and Mount
- Power Tilt-Up® Deck Lift for S61, R52, R64 decks (Model H only)
- Pneumatic Deck Tires
- Deck Cuff Kit
- Accelerator® Grass Catcher Kit
- Deck Height Adjuster
- Break Away Blades

*Visit walker.com for deck add-on compatibility.

Deck Compatibility

Collection Decks

	S	C	T	D	R	B	H
C36R	●	●	●	●			
C42/R	●	●	●	●			
C48/R	■	●	●	●			
C52R		◆	●	●			

■ Model S18 only, C48R deck only. ◆ Model C19i only.



Deck Compatibility continued

Discharge Decks

	S	C	T	D	R	B	H
S36	●	●	●	●		●	
S42	●	●	●	●		●	
S42-R					●		
S48-R					●		
S48	■	●	●	●		●	▲
S52		●	●	●		●	▲
R52							●
S54-R					●		
S56	■	●	●	●		●	▲
S61							●
S62		●	●	●		●	▲
R64							●
S74			●	●		●	▲

▲ Requires Deck Arm Adapter Kit P/N 2430-10. ■ Model S18 only.

Mulching Decks

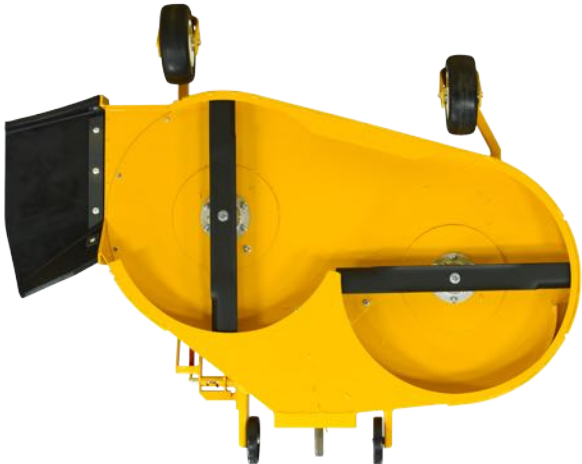
	S	C	T	D	R	B	H
M36	●	●	●	●		●	
M42	●	●	●	●		●	
M42B	●	●	●	●		●	
S42-R Kit					●		
S48-R Kit					●		
M48	■	●	●	●		●	▲
M52			●	●		●	
S52 Kit		●	●	●		●	▲
S54-R Kit					●		
S61 Kit							●

▲ Requires Deck Arm Adapter Kit P/N 2430-10. ■ Model S18 only.

Multi-Deck

	S	C	T	D	R	B	H
U48	■	●	●	●			

■ Model S18 only.





"Since we started using Walkers, we have seen a 30-minute time improvement per lawn."

Corey Logue
Southern Resources of Georgia, Inc., Brunswick, Georgia

Customer Profile:
Southern Resources of Georgia, Inc.

The two maintenance crews from Southern Resources of Georgia, Inc. spend a good amount of their time each week in Frederica Township on St. Simons Island, Georgia. That's because 40 of their 52 maintenance accounts are in this enclave of beautiful homes.

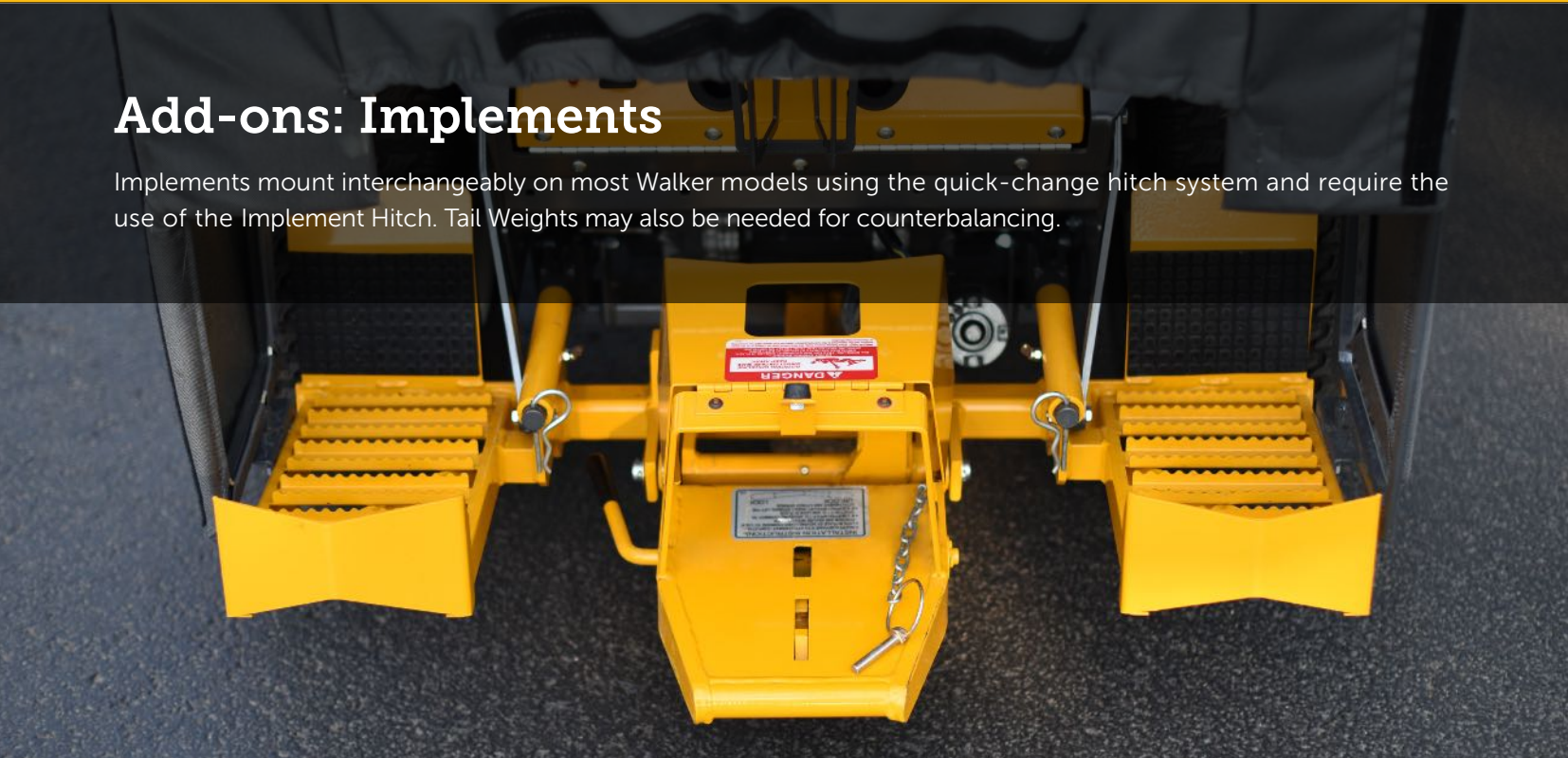
Cory Logue is the maintenance supervisor for Southern Resources and says once they started using Walker Mowers about four years ago, everything changed: "We were trying to catch grass with our mid-mounts, and they were bulky and handling the grass was no fun. When we started using Walkers, our lawns started looking better and we could blow debris on the lawns and clean it up instead of piling it up in the driveway and picking it up by hand." He adds that they are experiencing a considerable reduction in mowing times: "Since we started using Walkers, we have seen a 30-minute improvement per lawn."

Logue says other mowing companies have also noticed the results of the Walker and have started using Walker by choice or by customer request. He says it's easy to understand why because of the "vacuum cleaner" look of the Walker and the ability to make grasses of all types look great.



Add-ons: Implements

Implements mount interchangeably on most Walker models using the quick-change hitch system and require the use of the Implement Hitch. Tail Weights may also be needed for counterbalancing.



Implement Hitch

The Implement Hitch replaces the mower deck and installs on the tractor in just a few minutes. Implements then slide onto the hitch and lock in place with the flip of a lever for true “quick-change” capability. The Hitch assembly includes operator footrests and an electric power lift.

A switch raises and lowers implements and is mounted on the Forward Speed Control lever for convenient operation.

Models C, T, D:	P/N H10
Model H:	P/N H19
Model B:	P/N H21

Option: Tail Weights

Tail weights are used for counterbalancing many Walker front-mounted add-ons such as a snowblower, loader bucket, or rotary broom. Tail weights also improve handling when using large decks on the lighter models. The cast-iron weights bolt directly to the chassis frame or the split-axle tail.

Model B: 50 lb	P/N 4647-10
Extra 50 lb weight	P/N 4647-11
Model H: 50 lb	P/N 2647-10
Model H: 55 lb	P/N 2647-11
Extra 55 lb weight	P/N 2647-6
Model C, T, D: 85 lb	P/N 7647
Extra 10 lb weight	P/N 7647-5





Rotary Broom

The Rotary Broom, with a 47" or 60" sweeping path and five-position angle head, is ideal for sweeping debris or light snow from hard surfaces.

The Rotary Broom excels at sweeping and removing gravel and debris from turf areas along roads, paths, and playing fields, and can also be used for lawn dethatching and raking. Down pressure is spring counter-weighted and is adjustable for great sweeping action and minimum brush wear. The Rotary Broom is another way to extend the usability of the Walker commercial riding lawn mower. Requires Implement Hitch (see page 36).

Models B, C, T, D: 47".....P/N H13
Model H: 60".....P/N H20

Optional Gauge Wheels: Available to better control depth of brush engagement. It is especially useful when working on turf. **P/N 1399**



Dozer Blade (48" or 60")

The Dozer Blade is a powerful tool able to tackle a variety of tasks, from cleaning up after a snow storm to backfilling irrigation trenches. It is designed and built by Walker, using the latest fabrication technology, precision tooling, and quality workmanship.

Blade design features a simple foot-actuated angle-adjust mechanism that allows the operator to quickly set the blade to five different positions, and also employs trip-over protection with adjustable preload. The steel cutting edge is replaceable, with four mounting positions for extended life.

Requires Implement Hitch (see page 36).

Models C, T, D, B, H: 48" (121.92 cm).... P/N H11
Models T, D, H: 60" (152.4 cm) P/N H16

An optional Polyurethane Wear Edge Kit is available for use on sensitive surfaces:

48" (121.92 cm) P/N 6625-10
60" (152.4 cm)..... P/N 6625-11



Loader Bucket

A versatile tool for landscaping work, the Loader Bucket will push, scoop, haul, and grade dirt, stone, gravel, and mulch. It lifts approximately 180 lb (82kg), holds 2.25 cu. ft. (64 liter) of material, and features 14" (35.56 cm) ground clearance for transport. The Loader Bucket has a high-strength steel cutting edge with tilting action, powered by a 500 lb electric ram. It is available for use on models B, C, T, and D. It requires an Implement Hitch (see page 36). **P/N H18**





Debris Blower

Useful for landscape clean-up and leaf removal, the Debris Blower quickly mounts to the Implement Hitch and gives the Walker Mower owner full three-season use.

The 13.5" (34.29 cm) Debris Blower delivers 125 MPH velocity and a 230 degree manual directional control. The same high-quality construction found in each of our commercial mowers is built into this and each implement we offer. It is available for use on models B, C, T, and D. It requires an Implement Hitch (see page 36).

P/N H14

**Two-Stage Snowblower
(42" or 50")**

This powerful add-on throws snow up to 40 feet (12.192 meters) with a directional discharge spout that can be adjusted 228 degrees from the operator seat. The chute pitch-adjustment allows for fine control of throw angle and distance, and comes with an optional electric control kit. With the electric height-adjustment of the Implement Hitch, the Snowblower will make quick work of even the deepest of snowfalls. It requires an Implement Hitch (see page 36).

Models C, D, T, B, H: 42" (106.68 cm)..... P/N H12
Model H: 50" (127.00 cm)..... P/N H17

Optional Chute Control Kit:
P/N 6623-4



Add-ons: Attachments

Attachments mount interchangeably on most Walker models and do not require the use of an Implement Hitch. Some attachments replace the deck, while others attach to the deck or to the tractor body.



Hard Cab

The Hard Cab shields the operator from winter weather when using a Snowblower, Rotary Broom, or Dozer Blade. It includes two hinged doors, glass windshield with electric windshield wiper, LED headlights, and circulation fan. It requires a ROPS kit for mounting (see page 41). Compatible only with H models. **P/N A33**

Optional Operator Cab Heater (use only with Model H37i): **P/N 2200-24**

Soft Cab

The Soft Cab shields the operator from winter weather when using a Snowblower, Rotary Broom or Dozer Blade. It features a hinged door with glass windshield, electric windshield wiper, and LED Headlights. **P/N A17**

Models D, T Mounting Kit: **P/N 7660-23**

Model B Mounting Kit:..... **P/N 7660-24**

Model C Mounting Kit: **P/N 7660-25**

Front Cab Extension Flap (protects operator when using Dozer Blade):
P/N 7661-4

ROPS

The Walker Roll-Over Protection Structure (ROPS) consists of a high-strength steel roll bar and retracting inertial-reel seat belt.* The ROPS system features a hinged roll bar that can be folded down for convenient transport and storage.



- Models H27i, H24d..... P/N A30**
- Model H37i..... P/N A34**
- Models C, D, T..... P/N A37**

**Seat belt only available with Suspension Seat.*

Single-Stage Snowblower 36"

Just the right size for tackling sidewalks and driveways, the 36" (91.44 cm) Single-Stage Snowblower attachment mounts directly in place of the mower deck in just a few minutes. A simple, manual lifting mechanism and footrests are integrated with the Snowblower mount. No separate implement hitch is required. The Snowblower is compatible with models S, C, T, D, and B. The Snowblower is the perfect winter season add-on to give the Walker year-round versatility. It is a compact, powerful addition to the Walker Mower, throwing snow up to 20 feet. **P/N A11**



Spyker Spreader Attachment

The Spyker Spreader Attachment combines a Spyker S80-12010 Pro-Series Spreader with the versatile Walker Mower. No tools are needed to secure the spreader to the carrier frame of the Walker 42 inch, 48 inch, or 52 inch gear-driven decks.

- Spyker Spreader and Mount..... P/N A39**
- Spyker Spreader Mount only..... P/N A38**





Dethatcher

The Dethatcher on the front of the Walker Mower is the ideal setup to quickly dethatch and mow a property. When used with the Grass Handling System on Models S, C, T, and D, lawn thatch and debris are lifted, vacuumed, and collected in one pass. The Dethatcher features front-gauge wheels which allow the dethatching tines to maintain consistent depth on uneven or articulating properties.

The Dethatcher quickly attaches to the front of most 36", 42", 48", and 52" Walker gear-driven decks with integrated adjustable mounting saddles. A lift lever with foot trigger lowers and raises the Dethatcher for easy transport when driving between lawn areas. Gauge wheels are adjustable to set and tune tine depth. The foldable handle allows the Dethatcher to be stored vertically against a shop wall or tied down against a trailer sidewall. **P/N A10**



Optional Wall Mount:
Securely and compactly mount the Dethatcher off the floor in a space-saving manner on your shop or garage wall. **P/N 6606-11**



Boom Sprayer

A helpful attachment for property maintenance, the Boom Sprayer easily mounts to most 42", 48", 52", 56", and 62" Walker decks, and offers a 96" (243.84 cm) spray pattern, allowing operators to apply fertilizer or weed control in an efficient manner.

A spray gun with a 20-foot (6.09 meter) hose allows the operator to leave the mower and apply liquid material to all landscape features. The spray tip adjusts to offer varying output, from a mist to a 35-foot (10.66 cm) stream. The 25-gallon (94.63 liter) tank allows easy cleaning of the tank and spray system. **P/N A16**

Mounting on 52" & 62" decks requires two Rear Sprayer Supports **P/N B037**



48" Dozer Blade

Developed to provide a durable, simple, and productive attachment for the Walker, the Dozer Blade incorporates a manual lifting mechanism not requiring an implement hitch. The Dozer Blade features a foot-actuated, angle-adjust mechanism that allows the operator to quickly set the blade to five different angles. The blade employs trip-over protection with adjustable preload to allow operators to focus on productivity, and not on what is hiding under the snow or dirt. A replaceable steel wear edge comes standard, and an optional polyurethane wear edge is also available. **P/N A32**

Adapter kits are required for using the A32 Dozer Blade:
Models B, S..... P/N 4300-16
Models C, T, D..... P/N 5628-10

Options available for the A32 Dozer Blade:
Polyurethane Wear Edge Kit 48" P/N 6625-10
Blade Attachment Power Lift Kit P/N 6622-17



Add-ons: Options



Comfort Seat

The Comfort Seat (shown left) is custom-designed with improved seat-bolstering and back profile for increased posture and support. The base cushion features Elastometric Vibration Control which greatly increases comfort during operation.

The Comfort Seat cover is made of marine grade, UV resistant industrial vinyl and features impermeable contrasting yellow stitching and subdued Walker branding embroidered on the seat back. The wear-resistant seat cover is easily replaceable. Matching armrests are available as an optional upgrade. The comfort seat comes standard on Models T and B.

<i>Models T, D.....</i>	<i>P/N 6104-8</i>
<i>Models B, S, C</i>	<i>P/N 6104-9</i>
<i>Model R.....</i>	<i>P/N 6104-10</i>
<i>Optional Armrests.....</i>	<i>P/N 6104-17</i>

Suspension Seat

Made by Grammer, this full-spring Suspension Seat includes dampening and adjustments for back angle, lumbar support, and operator weight. Armrests are standard on the Suspension Seat. This seat is standard on Models D21d and H24d, and is required for a ROPS seat belt. *P/N 6103-14*



<i>Models B23, B27i Mounting Kit.....</i>	<i>P/N 6103-51</i>
<i>Model C Mounting Kit</i>	<i>P/N 6103-52</i>
<i>Model H Mounting Kit</i>	<i>P/N 6103-53</i>
<i>Model T Mounting Kit.....</i>	<i>P/N 6103-54</i>

Armrests

Foldable armrests can be added to the Comfort or Standard Seat. They offer enhanced operator comfort and security. Armrests conveniently fold up when not in use. Armrests are standard equipment on the Suspension Seat.

<i>Standard Seat: P/N 5885</i>
<i>Comfort Seat: P/N 6104-17</i>



Utility Bed

The Utility Bed can replace the rear body assembly on the Model B, providing convenient storage and transport of material or tools. With manual dump functionality, the Utility Bed also adds all-season versatility to the Model B or H24d. It is standard on Models H24d, and the non-collection versions of T23, T27i, and D21d. **P/N 4650-2**



Headlights

The LED Headlights incorporate a durable, cast aluminum housing with five LED lamps in each light assembly. The lights are positioned to illuminate the front and sides of the mower deck, providing increased situational awareness and safety for both the operator and bystanders.

- Models C, H27i, H24d.....P/N 5989-13*
- Model B..... P/N 5989-17*
- Model S.....P/N 5989-14*
- Model R.....P/N 5989-15*
- Models D, T.....P/N 7989-14*
- Model H37i.....P/N 2989-12*

Cup Holder

Featuring a unique front-mount design, the Cup Holder gives the operator easy access to his or her drink. The Cup Holder frame is powder-coated metal and incorporates rubber tabs to secure different sized and shaped cups and tumblers up to 3.25 inches in diameter. It is not Model R compatible. **P/N 5744-9**



Instrument Panel Cover

This sturdy canvas Instrument Panel Cover protects the instrument panel on Walker Models D and T when parked outside or trailered in rain or snow. **P/N 7307-2**





Power Dump

The Walker Power Dump (shown above) provides convenience and time-saving to commercial mowing companies and homeowners alike by giving the operator the ability to dump the grass catcher from the operator seat. A toggle switch operates the 12-volt electric linear actuator that provides the dumping and door-opening action, which completes in about 10 seconds.

- Model S14i.....P/N 7620-17**
- Model S18.....P/N 7620-18**
- Model C.....P/N 7620-14**
- Models T, D.....P/N 8620-2**



Hi-Dump®

The Walker Hi-Dump® (shown left) raises up 67 inches (170.18 cm) and dumps collected grass and debris into a truck or trailer in a 20-second cycle without the operator ever needing to leave the seat. Powered by a 12-volt electric/hydraulic system, the lifting and dumping functions work independently and are controlled by two toggle switches near the operator's seat. It is available for Models D and T. **P/N A21**

Large Hole Screen

When mowing in wet conditions, this screen with 3/4" holes stays cleaner to help prevent clogging. This screen easily interchanges with the standard screen.

7.0 bu. Catcher:
P/N 7512-13
10.0 bu. Catcher:
P/N 7512-11



No-Catch Deflector

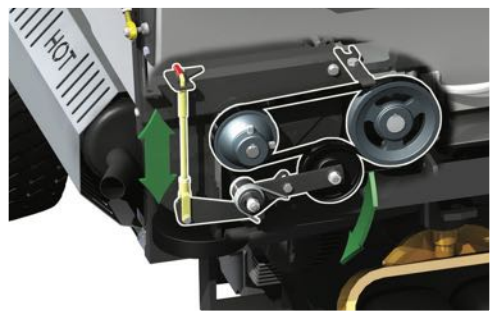
The No-Catch Deflector easily installs in the grass catcher door frame to allow "non-collection" rear-discharge mowing with GHS models. Grass clippings are safely deflected downward and spread across the door opening.

7.0 bu. Catcher:
P/N 7500-2
10.0 bu. Catcher:
P/N 8500-2



GHS Blower Lockout

The Blower Lockout disengages the Grass Handling System® (GHS) blower to reduce noise and increase power when using a side discharge deck, mulching deck or PTO-driven attachment or implement. Disengaging the blower also prevents grass, snow, or debris from entering the grass catcher. **P/N 7541-1**



Dump Bag

The reusable, fabric Dump Bag helps make on-the-job cleanup a lot easier. It is sized to fit the grass catcher door opening, allowing the operator to cleanly handle clippings and easily transport them.



7 bu. Catcher: P/N 5598-1
10.0 bu. Catcher: P/N 5598-2

Dump Bins

These two bins slide into the Walker 10-bushel catcher, making the dumping of grass clippings much easier by dividing the clippings in half. This is especially useful for single operators working by themselves.

Set of Dump Bins.....P/N 8510-11
Left Side Dump BinP/N 8510-9
Right Side Dump Bin.....P/N 8510-10





Deck Height Adjuster

The mechanical Deck Height Adjuster installs directly onto the Walker mowing deck. It offers quick and easy cutting height adjustments in 1/4 inch increments, using a single hand lever within reach of the operator's seat.

C36R, S36, M36	P/N A22
C42, S42, M42	P/N A23
C48, S48, M42B, M48	P/N A24
C48R, C52R	P/N A25
S52*	P/N A26
S62**	P/N A27
S56	P/N A28
C42R	P/N A29

*A26 SN 163318 and prior S52 decks.

**A27 SN 187999 and prior S62 decks.

Deck Height Washers

Deck Height Washers allow finer adjustments of cutting height on compatible decks. Use these to adjust deck height by 1/4 inch.

36", 42", 48", 52", 54", 56" gear or belt drive decks	P/N 5727-1
52", 62" belt drive, 74" gear drive decks	P/N 8727



Curb Jumper

This 40 inch (101.60 cm) wide curb ramp allows Walker Mowers to easily back over a standard curb for access to medians, landscape areas in parking lots, and raised beds. When not in use, the ramp stows on the mowing deck carrier frame and functions as an expanded footrest.

Standard Decks P/N 5597, Deck Height Adjuster Decks P/N 5597-1

Power Tilt-Up®

Available for the Model H, the Power Tilt-Up® makes it easy to automatically tilt up decks for maintenance, transportation and storage. Tilt-up action uses a 12-volt electric linear-actuator easily mounted to any Model H mower equipped with a S61, R52, or R64 deck with adjustable footrests. The use of a tailweight is suggested (see page 36).

Models H27i, H37i P/N A35
Model H24d..... P/N A36



Deck Lift

The Deck Lift raises the front casters of the deck a few inches off the ground to avoid wear and tear on the deck while transporting. The Deck Lift mounts directly to a Walker tractor and deck. Compatible only when Standard Seat is installed.

Model B..... P/N 4645
Models C, T, D..... P/N 8645

Break Away Blades

Use Break Away Blades in mowing conditions with frequent ground contact and/or excessive debris. Break Away Blades lessen the impact and shock loading on the deck drive-train and reduce blade damage. Cutting blades can be easily replaced or removed for sharpening.

S56.....P/N 5705-32
S42.....P/N 5705-33
S74.....P/N 5705-34
S48.....P/N 7705-8





Deck Cuff

Airflow and deck contour tend to push grass at the very edges of the deck away from the cutting blades. The Deck Cuff acts as a channel to direct grass at the edge of the deck into the blade cutting path, restoring full deck cutting width.

- C36R**..... **P/N 7704-2**
- C48R**..... **P/N 7704-4**
- C52R**..... **P/N 7704-5**

Spread Axle Tail Wheel

The Spread Axle Tail Wheels track in line with the drive tires for grass conditions where the center tail wheel track may not be preferred. This offers a clean look to the striping, improves straight tracking, and also contributes to stability when operating on hillsides.

- Spread Axle Assembly**..... **P/N 7420-3**
- Tank Relocation Kit Required for D21**..... **P/N 7420-8**



Dual Tail Wheel

The Dual Tail Wheel comes standard on Models T and D. Featuring two independent pneumatic tires, it offers less turning resistance than the Single Wide Tail Wheel, offering mowing with greater agility and precision. **P/N 7420-20**



Single Wide Tail Wheel

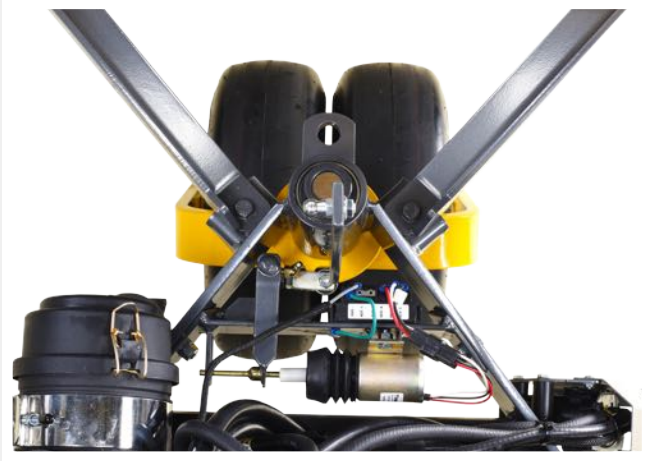
The Single Wide Tail Wheel creates a single, uniform tire stripe in the middle of the cutting width for a clean-looking stripe-pattern. It is not recommended for delicate turf, D Models, or machines equipped with a Hi-Dump® due to the increased turning friction at the contact patch of the tail wheel. **P/N 8049**

Adjustable Footrests

These Adjustable Footrests clamp onto the carrier frame. They are easy to install and adjust, making for a comfortable ride for operators with shorter legs.

- 36", 42", 48", 52"..... P/N 8662-10
- S74..... P/N 8662-9





Tail Wheel Lock

The Tail Wheel Lock uses a locking solenoid and detent to hold the tail wheel into a “straight ahead” position. This dramatically improves the ability to create straight stripes and stability for hillside mowing. An On/Off toggle switch located on the Forward Speed Control makes it easy to control from the operator seat. **P/N 8540**

Big Tire Kit

This kit, available for the Model B only, includes a larger, 20” drive tire along with taller tail wheel and deck caster forks. It provides increased cutting heights up to 5 inches, higher ground speed, and improved operator comfort in rough conditions.

For use with 8” Deck TiresP/N 5076-10
For use with 11” Deck Tires.....P/N 5076-11

Taller Deck Caster Forks

Larger, 20” Drive Tire

Taller Tail Wheel Fork



18 x 7-8 Turf Tire

The 18 x 7-8 Turf Tire is ideal for use with narrow decks, attachments, or implements. With these tires, the overall width of the tractor stays within the cut width of Walker's 36 inch decks. **P/N 5033-6**



18 x 7-8 Directional AT Tire

The 18 x 7-8 AT Tire features a high-traction, directional tread. It is ideal for increased traction in a variety of situations such as snow removal, dirt work, and mowing where a narrow, aggressive tire is needed. It is perfectly paired with the 36 inch Single-Stage Snowblower, the 48 inch Dozer Blade, or 36 and 42 inch decks.

Left Drive Tire: P/N 5034-1

Right Drive Tire: P/N 5034-2



18 x 8.5-10 Turf Tire

The 18 x 8.5-10 Turf Tire features a low profile sidewall for increased stability on slopes and less sidewall flex in turns. The 18 x 8.5-10 Turf Tire keeps overall tractor width less than 42 inches, ideal for narrower decks, attachments, or implements. This tire is standard on Models B, C, S18, and Models T and D with ROPS. **P/N 5075-3**



18 x 8.5-10 AT Tire

These aggressive 18 x 8.5-10 high-traction tires feature increased traction useful for snow removal, dirt work, and other challenging mowing conditions. The tire width maximizes deck overhang for improved trimming capability, as well as dozer blade overhang to increase blade side reach. **P/N 8070-9**



18 x 9.5-8 Turf Tire

The 18 x 9.5-8 Turf Tire is a good balance of low ground pressure, operator comfort, and deck overhang for trimming ability. It is the standard tire on Model T and Model D Walker Mowers without ROPS. **P/N 7070-2**



18 x 10.5-10 Turf Tire

The 18 x 10.5-10 Turf Tire provides optimum traction and a large contact area, reducing ground pressure and protecting the turf. The low profile sidewall improves hillside handling. Due to its width, and for optional trimming, it should be paired with 48 inch or larger decks. *P/N 8075-4*



18 x 11-10 AT Tire

The 18 x 11-10 All Terrain Tire is ideal for increased traction in a variety of situations ranging from hillside mowing to snow removal. It also features a low profile sidewall for increased stability and performance. *P/N 8070-12*



22 x 10.5-12 Turf Tire

The 22 x 10.5-12 Turf Tire provides optimum traction while minimizing turf damage in normal mowing conditions for the Model H. This tire is standard on the Model H. *P/N 2071*



23 x 10.5-12 AT Tire

The 23 x 10.5-12 All-Trail Tire features a moderately aggressive, bi-directional tread pattern ideal for challenging turf applications. The All-Trail Tire improves traction and hillside performance for the Model H. *P/N 2071-4*



23 x 10.5-12 Directional AT Tire

The 23 x 10.5-12 Directional All-Terrain Tire provides improved traction for the Model H and is ideal for snow, dirt, and challenging mowing and implement conditions. The Directional AT tread layout is open enough to shed snow and mud, yet the tire rolls smoothly and performs well on manicured turf.

Left Tire: P/N 2070-5, Right Tire: P/N 2070-6



Pneumatic Deck Tire

For operators who like the ability to fine-tune the performance and ride of their Walker Deck, we offer a pneumatic tire option. The Pneumatic Deck Tires replace the standard semi-pneumatic tires and allow for adjustment of air pressure.

Tire and inner tube only: P/N 5715-15

Tire, inner tube, and wheel assembly: P/N 5715-24



Semi-Pneumatic Deck Tire

Never again experience the downtime of having a flat deck tire. The Semi-Pneumatic Deck Tires are molded, structural rubber with a hollow core, and come standard on most Walker Decks.

Tire, wheel and axle assembly: P/N 5715-23

Tire only: P/N 5715-16



Tire Chains

The Tire Chains are used for extra traction while working in snow with a Walker Snowblower, Rotary Broom or Dozer Blade. There are tire chains to fit every Walker model.

- 18 x 6.5-8..... P/N 5675**
- 18 x 8.5-8..... P/N 5675-2**
- 18 x 9.5-8..... P/N 5675-3**
- 22x10.5-12..... P/N 5675-6**



Add-on Compatibility

Implements	S	C	T	D	R	B	H
Implement Hitch ¹		•	•	•		•	•
47" Rotary Broom		•	•	•			
60" Rotary Broom							•
48" Dozer Blade		•	•	•		•	•
60" Dozer Blade			•	•			•
Loader Bucket		•	•	•		•	
Debris Blower		•	•	•		•	
42" Two-Stage Snow Blower		•	•	•		•	
50" Two-Stage Snow Blower							•

Attachments	S	C	T	D	R	B	H
Operator Soft Cab		•	•	•		•	
Operator Hard Cab							•
ROPS		•	•	•			•
36" Single-Stage Snow Blower	•	•	•	•		•	
Dethatcher ²	•	•	•	•		•	
Boom Sprayer ²	•	•	•	•		•	•
48" Dozer Blade	•	•	•	•		•	
Spyker Spreader and Mount	•	•	•	•		•	

Options	S	C	T	D	R	B	H
Comfort Seat	•	•	•	•	•	•	
Suspension Seat		•	•	•		•	•
Armrests	•	•	•	•	•	•	•
Utility Bed			•	•		•	
Headlights	•	•	•	•	•	•	•
Cup Holder	•	•	•	•		•	•
Instrument Panel Cover			•	•			
Tail Weights		•	•	•		•	•
Power Dump	•	•	•	•			

Options (continued)	S	C	T	D	R	B	H
Hi-Dump®			•	•			
Large Hole Screen	•	•	•	•			
No-Catch Deflector	•	•	•	•			
GHS Blower Lockout		•	•	•			
Dump Bag	•	•	•	•			
Dump Bins			•	•			
Deck Height Adjuster ²	•	•	•	•		•	•
Deck Height Washers ²	•	•	•	•		•	•
Curb Jumper ²	•	•	•	•		•	•
Power Tilt-Up®							•
Deck Lift	•	•	•	•		•	•
Break Away Blades ²	•	•	•	•		•	
Adjustable Footrests ²	•	•	•	•		•	•
Deck Cuff ²	•	•	•	•			
Spread Axle Tail Wheel		•	•	•			
Dual Tail Wheel			•	•			
Single Wide Tail Wheel			•	•			
Tail Wheel Lock			•	•			
18 x 7-8 Turf Tire	•	•	•	•	•	•	
18 x 7-8 Directional AT Tire	•	•	•	•	•	•	
18 x 8.5-10 Turf Tire	•	•	•	•	•	•	
18 x 8.5-10 AT Tire	•	•	•	•	•	•	
18 x 9.5-8 Turf Tire	•	•	•	•	•	•	
18 x 10.5-10 Turf Tire		•	•	•		•	
18 x 11-10 AT Tire		•	•	•		•	
22 x 10.5-12 Turf Tire							•
23 x 10.5-12 AT Tire							•
23 x 10.5-12 Directional AT Tire							•
Pneumatic Deck Tire ²	•	•	•	•		•	•
Semi-Pneumatic Deck Tire ²	•	•	•	•		•	
Tire Chains ³	•	•	•	•	•	•	•

¹ Required for use of compatible implements. ² Visit walker.com for a full list of compatible decks. ³ Visit walker.com for a full list of compatible tires.

Walker Mower Specifications

	S18	C19	C19i	T23	T27i	D21d	R21	B23	B27i	H24d	H27i	H37i
Engine	B&S Vanguard	Kohler CH620	Kohler ECH630	Kohler CH680	Kohler ECH749	Kubota D722 Diesel	Kohler KT620	Kohler CH680	Kohler ECH749	Kohler KIDW1003 Diesel	Kohler ECH749	B&S Vanguard
Fuel System	Carb	Carb	EFI	Carb	EFI	Diesel	Carb	Carb	EFI	Diesel	EFI	EFI
Cooling System	Air	Air	Air	Air	Air	Liquid	Air	Air	Air	Liquid	Air	Air
Displacement (cc)	570	674	694	674	747	719	660	674	747	1028	747	993
HP @ 3600 RPM	18	19	19	22.5	26.5	20.9	21	22.5	26.5	23.7	26.5	37
Max Torque (ft-lbs)	29.2	35	34.2	37.9	40	34	35.9	36.8	40	36.8	40	53
Fuel Capacity US gal (liter)	4 (15.1)	4 (15.1)	4 (15.1)	4.7 (17.8)	4.7 (17.8)	4.7 (17.8)	3 (11.4)	4.7 gal (17.8)	4.7 (17.8)	9.4 (35.6)	9.4 (35.6)	9.4 (35.6)
Drive Tire Size (diameter x width)	18x8.5	18x8.5	18x8.5	18x9.5	18x9.5	18x9.5	18x8.5	18x8.5	18x8.5	22x10.5	22x10.5	22x10.5
Top Speed (MPH & km/h)	7.4 (12)	6.5 (10.5)	6.5 (10.5)	6.5 (10.5)	6.5 (10.5)	6.5 (10.5)	7 (11.3)	8 (13)	8 (13)	10 (16)	10 (16)	10 (16)
Tractor + Deck ¹ Length inch (cm)	89.25 (226.69)	89.25 (226.69)	89.25 (226.69)	93 (236.22)	93 (236.22)	93 (236.22)	93 ¹ (236.22)	90.75 (230)	90.75 (230.50)	107 (271.78)	107 (271.78)	108 (274.32)
Tractor + Deck ¹ Tilted Length inch (cm)	77 (195.58)	77 (195.58)	77 (195.58)	77 (195.58)	77 (195.58)	77 (195.58)	77 (195.58)	72 (183)	72 (182.88)	87.75 (222.88)	87.75 (222.88)	87.75 (222.88)
Height inch (cm)	46.5 (118.11)	47.5 (120.65)	47.5 (120.65)	50 (127)	50 (127)	50 (127)	42 (106.68)	39.5 (100)	39.5 (100.33)	50.5 ¹ (128.27)	46.5 (118.11)	46.5 (118.11)
Tractor Only Width inch (cm)	36.25 (92.07)	37.75 (95.88)	37.75 (95.88)	39 (99.06)	39 (99.06)	39 (99.06)	39 (99.06)	38.5 (98)	38.5 (97.79)	46.5 (118.11)	46.5 (118.11)	46.5 (118.11)
Tractor Only Weight (lb & kg)	636 (289)	734 (333)	739 (335)	790 (358)	787 (357)	959 (435)	404 (183)	610 (277)	610 (277)	997 (452)	748 (340)	778 (353)
Tractor + Deck ² Weight (lb & kg)	827 (390)	925 (420)	930 (422)	1009 (458)	1006 (457)	1178 (534)	575 (260)	848 (385)	848 (385)	1434 (650)	1185 (537)	1215 (551)

¹S6C: C42, T9D; C48, R: S48, B: M48, H: R64, S: C36, C: C42, T & D: C48, R: 42" B: S48, H: R64, ²ROPS folded. Note: The A21 Hi-Dump Kit weighs 175 lbs (79 kg).

- Gasoline engines require unleaded 87+ octane
- Diesel engines require 2-D Full pressure lube systems with filter
- Heavy-duty stamped steel cutting blades, tempered
- Flywheel alternator charging, D21d has belt-driven alternator
- Internal mechanical parking brake
- Safety circuitry by seat switch, transmission neutral, blade clutch, and parking brake
- Electric blade clutch with easy pull/push switch operation on Models R and B
- Dual-lever steering, precision friction-lock Forward Speed Control lever with neutral/park position
- All machines feature dual independent hydrostatic transmissions
- Cutting height 1.5" to 4", 1.5" to 4.5", or 1" to 5", varies per model
- Welded, heavy gauge, steel chassis
- Decks and add-ons powered by splined PTO shaft with dual u-joints allowing dynamic articulation, except for the Model R
- Deck carrier frame with flexible deck suspension, caster wheels, and counterweight springs
- Welded, 14 gauge steel bodies
- Welded, 11 gauge steel decks
- 12V electrical systems
- Blade clutch and brake with manual belt tightener S, C, T, D, H

