



15-500HP

# MERCURY SEAPRO™



# SOME PEOPLE DO MORE LIVING WHILE EARNING A LIVING.

---

Right now, someone is staring out a 15th-floor office window, wishing they could trade places. A life on the water isn't always easy, but it sure has its perks. Fresh air, wide-open spaces, workdays that rarely follow well-worn scripts. There are countless ways to earn a paycheck, but sometimes it's hard to imagine doing anything else.







# AS RELIABLE AS THE SUN. AND AS TOUGH AS THE DAY IS LONG.

---

Everyone wants the same things from a co-worker. Ability. Dedication. Reliability. Versatility. Anything to help the workday go smoothly. From 15hp to 500hp, the Mercury® SeaPro™ outboards are built to handle the heavy-duty needs of commercial boating applications. A job on the water can be unpredictable, with demanding hours and conditions that can change in an instant. But a SeaPro outboard clocks in on time every day, eager to work as hard as you do, as long as you do.





# NO ORDINARY JOB. NO ORDINARY ENGINE.

No matter the workplace, the workday is simple: maximize productivity while minimizing costs and downtime. Mercury 200 to 500hp SeaPro outboards are built to handle tough jobs, tough conditions, long hours and long distances. And with smooth, reliable operation and unmatched durability, a SeaPro outboard keeps your focus on the task at hand.

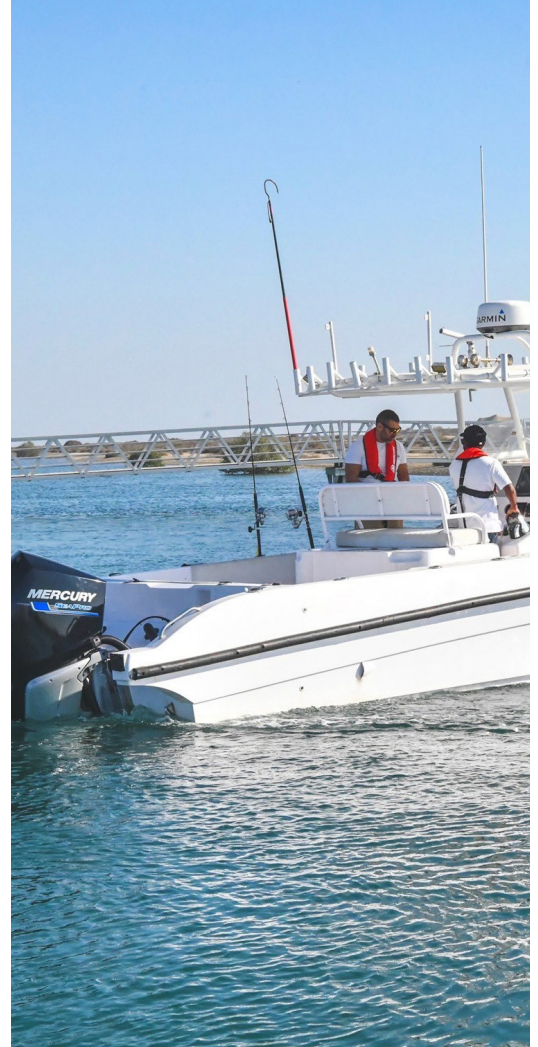


SEAPRO™

200-500  
HORSEPOWER

## DURABILITY AN IMPRESSIVELY ROBUST RESUMÉ

V12, V8 and V6 SeaPro engines feature a heavy-duty gearcase validated at 3x the lifespan of a recreational gearcase, while a hydrodynamic design contributes to enhanced efficiency and decreased engine workload. Unmatched corrosion resistance starts with superior aluminum alloys and coatings, plus four serviceable anodes, including one in the cylinder block.



POWER & PERFORMANCE  
**ALL DAY STRONG,  
ALL DAY LONG**

The 200 to 500hp SeaPro outboards flex their muscle with best-in-class displacement, producing more torque and horsepower at lower rpm while putting less stress on the engine. For added efficiency, Advanced Range Optimization automatically adjusts fuel delivery for optimized cruising.

COMPACT FLEXIBILITY  
**A PERFECT FIT  
FOR THE JOB**

The V12 SeaPro outboard features a revolutionary independently steerable gearcase with instantly responsive controls. By eliminating above-water engine rotation, handling is refined and more space is freed on the transom. V8 and V6 SeaPro outboards mount on 26-inch centers, freeing valuable space for multi-engine applications and enabling simple repowers.

COMFORT & EXPERIENCE  
**MAKING WORK FEEL  
LESS LIKE WORK**

A SeaPro engine makes your boat a more comfortable workplace. Fuel-injector covers and a tuned multi-chamber air intake reduce excess noise. Mercury's exclusive Advanced MidSection (AMS) — standard on all 500hp SeaPro outboards and available on 300hp models — virtually eliminates vibration from reaching the boat, delivering added comfort and silky-smooth handling.



# ENGINEERED FOR EVERY DAY

---

Day in and day out, a 15 to 150hp SeaPro outboard is a co-worker you can count on. With increased performance at lower rpm, SeaPro outboards are engineered to deliver more power with less engine stress. Every job has its share of surprises, but a SeaPro outboard won't be one of them.



SEAPRO™

15-150

HORSEPOWER



#### DURABILITY

### TOUGH ENGINES FOR TOUGH JOBS

SeaPro engines are specifically engineered for the punishment of commercial use. Components are sized and tested to ensure strength and confidence for the long haul. For increased durability, upper mounts are twice as stiff as recreational models. A proprietary low-copper aluminum alloy, XK360, also provides superior corrosion resistance, adding peace of mind to commercial saltwater applications.

#### POWER & PERFORMANCE

### PROFESSIONAL MUSCLE

When paychecks depend on reliable, powerful performance, SeaPro delivers. Calibrated to reach maximum torque at lower rpm, SeaPro outboards provide more power with less effort. Electronic fuel injection, hydrodynamic design and an impressive power-to-weight ratio ensure you make the most of every drop of fuel. A Command Thrust gearcase – standard on 40 to 115hp SeaPro engines – features a larger torpedo and prop, able to lift heavy boats on plane more easily and maintain plane at lower speeds.

#### MAINTENANCE

### EASY UPKEEP FOR LESS DOWNTIME

An easy-access fuel filter and no-spill oil-change system minimize messes and downtime. Under the cowl, a convenient decal provides an overview of routine maintenance intervals. Mercury has also simplified freshwater flushing, ensuring easy maintenance at the end of a long day on the water.



**SmartCraft**

# THE POWER TO DO MORE

Learn more at [mercurymarine.com/smartcraft](http://mercurymarine.com/smartcraft).

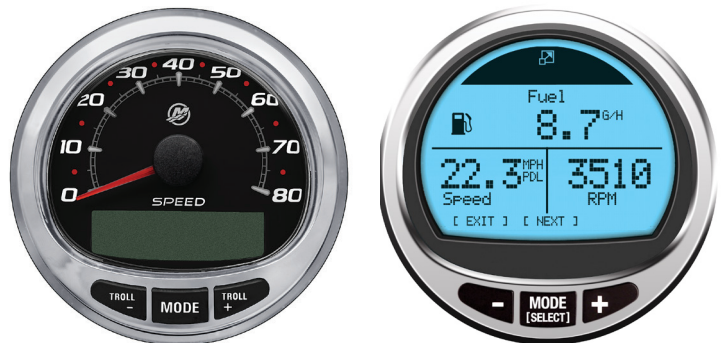


## VESSELVIEW EVERY ENGINE HAS A STORY TO TELL

Perpetual, personalized access to engine data and more. VesselView Mobile® monitors up to four engines, all in one convenient, intuitive app. VesselView Mobile features include customizable engine performance data displays, notifications and warnings, maps, checklists and maintenance reminders.

## DIGITAL GAUGES ALL-ACCESS ENGINE DATA

Digital monitoring that keeps you in complete control. MercMonitor, SC100 and SC1000 gauges provide precise insights into boat and motor functions such as speed, rpm, depth, trim and fuel flow, while also enabling SmartCraft® technologies like Troll Control.



SMARTCRAFT CONNECT & VESSELVIEW LINK

## FROM THE TRANSOM TO THE TOUCHSCREEN

VesselView Link and SmartCraft® Connect adapters pair VesselView® data and controls with multi-function displays from Garmin®, Raymarine®, Simrad® and Lowrance®. Adapters accommodate up to four engines, enabling select SmartCraft features and aggregating chartplotting, radar, sonar, audio controls and CZone® digital switching onto one display.



## DIGITAL THROTTLE & SHIFT SMOOTH AT ANY SPEED

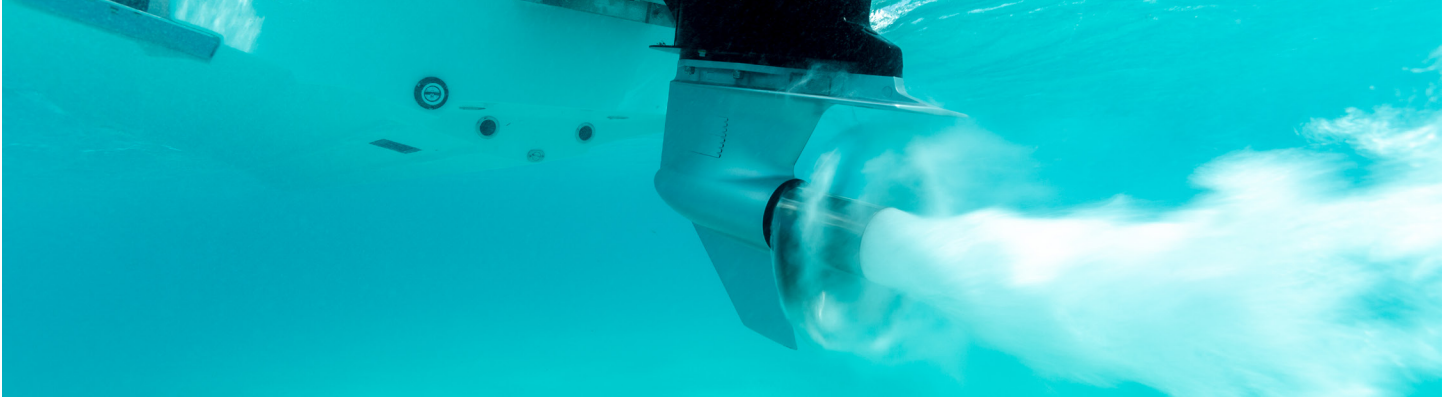
Available Digital Throttle & Shift (DTS) controls deliver silky-smooth shifting and instant throttle response, for effortless handling and complete command.

JOYSTICK PILOTING

## 360° DIGITAL CONTROL

For multi-engine configurations, 300 and 500hp SeaPro AMS outboards are available with Joystick Piloting for Outboards. JPO delivers simple joystick control for 360° maneuverability when you need it most, like in windy conditions or tight spaces. For added precision control, Heading uses GPS to maintain a chosen heading, and Skyhook® digital anchoring locks your boat's position at the touch of a button.





PROPELLERS

# WHERE THE RPMs MEET THE H<sub>2</sub>O

---

Mercury propellers are engineered to convert every bit of SeaPro horsepower into unmatched performance. With innovative technology and superior materials behind them, Mercury props set the standard for premium design and durability.

**Find the ideal prop for your outboard at [mercurymarine.com/propselector](https://www.mercurymarine.com/propselector).**



## EXCLUSIVE METALS

Meet the materials made specifically to propel Mercury engines. X7® stainless-steel alloy is 4x more durable and 30% stronger than conventional stainless, allowing Mercury to design props that would otherwise be impossible.

Mercalloy® aluminum is designed specifically for the die-cast process, helping us produce high-quality props, free of porosity for increased strength.



## HUB KITS

Mercury hub kits reduce noise, vibration and harshness at the source. They provide a cushion between the prop and prop shaft, enhancing durability and protecting the drivetrain from most accidental prop impacts.



## PVS

Mercury props don't take anything for granted. Our exclusive Performance Vent System® (PVS) lets you custom-tune propeller venting, ensuring optimal acceleration.



SERVICE & MAINTENANCE

# FEWER WORRIES, MORE TIME ON THE WATER

Learn more at [mercurymarine.com/find-a-dealer](http://mercurymarine.com/find-a-dealer).



## WARRANTY

A Mercury SeaPro outboard is made to last. Engines used for recreational purposes are factory-backed with a three-year limited warranty and industry-exclusive three-year corrosion warranty. Commercial-use engines are backed by a two-year limited warranty and two-year corrosion warranty.



## MERCURY PRODUCT PROTECTION

Available for engines used for recreational purposes, Mercury Product Protection is a factory-backed extended service contract that covers certain defects in material and workmanship beyond the term of the Mercury limited warranty, for up to eight years of coverage.



## DEALER NETWORK

If your engine requires service, an extensive network of factory-trained dealers and master technicians is ready with genuine Mercury replacement parts and accessories to get you back on the water.



## PRECISION CARE

Mercury Precision Parts® provide original factory fit and performance to ensure your engine stays running like new. Mercury Precision Lubricants® are specially formulated and tested to exceed our high standards and keep engines running smoothly, no matter where the job takes you.

# SEAPRO<sup>®</sup> SPECIFICATIONS



HP	15	25	40	60
<b>WOT RPM:</b>	4500-5500	5400-5800	4500-5500	4500-5500
<b>Engine Type:</b>	Inline-2	Inline-3	Inline-4	Inline-4
<b>Displacement:</b>	20.3 cu in (333cc)	30.5 cu in (500cc)	60.8 cu in (995cc)	60.8 cu in (995cc)
<b>Induction:</b>	4-valve, SOHC	6-valve, SOHC	8-valve, SOHC	8-valve, SOHC
<b>Starting:</b>	Manual	Manual or electric	Electric (turnkey)	Electric (turnkey)
<b>Gear Ratio:</b>	2.15:1	2.17:1	2.33:1	2.33:1
<b>Alternator:</b>	12 amp (145 watt) w/ electric start kit	17 amp (210 watt) electric start models	18 amp (226 watt)	18 amp (226 watt)
<b>Trim System:</b>	6-position manual	6-position manual	Gas assist or power trim and tilt	Gas assist or power trim and tilt
<b>Dry Weight:</b>	105lbs (47.5kg)	133lbs (60kg)	260lbs (118kg)	260lbs (118kg)
<b>Steering:</b>	Remote or tiller	Remote or tiller	Remote or tiller	Remote or tiller
<b>Shaft Length:</b>	15 in (381mm) 20 in (508mm)	20 in (508mm)	20 in (508mm) 22.5 in (571.5mm) 25 in (635mm)	20 in (508mm) 22.5 in (571.5mm) 25 in (635mm)

HP	75	90	115	150
<b>WOT RPM:</b>	5000-5500	5000-5500	5000-5500	4800-5300
<b>Engine Type:</b>	Inline-4 (8-valve, SOHC)	Inline-4 (8-valve, SOHC)	Inline-4 (8-valve, SOHC)	Inline-4 (8-valve, SOHC)
<b>Displacement:</b>	2.1L (126 cu in)	2.1L (126 cu in)	2.1L (126 cu in)	3.0L (183 cu in)
<b>Induction:</b>	Performance-tuned scroll intake manifold	Performance-tuned scroll intake manifold	Performance-tuned scroll intake manifold	Performance-tuned scroll intake manifold
<b>Starting:</b>	Electric start with SmartStart protection	Electric start with SmartStart protection	Electric start with SmartStart protection	Electric start with SmartStart protection
<b>Gear Ratio:</b>	2.38:1	2.38:1	2.38:1	2.08:1
<b>Alternator:</b>	35 amp (441 watt)	35 amp (441 watt)	35 amp (441 watt)	60 amp (756 watt)
<b>Trim System:</b>	Power trim and tilt	Power trim and tilt	Power trim and tilt	Power trim and tilt
<b>Dry Weight:</b>	363lbs (165kg)	363lbs (165kg)	363lbs (165kg)	455lbs (206kg)
<b>Steering:</b>	Remote or tiller	Remote or tiller	Remote or tiller	Remote or Big Tiller



<b>Shaft Length:</b>	20 in (508mm)	20 in (508mm) 25 in (635mm)	20 in (508mm) 25 in (635mm)	20 in (508mm) 25 in (635mm)
----------------------	---------------	--------------------------------	--------------------------------	--------------------------------

HP	200	225/250	300	300 AMS	500
<b>WOT RPM:</b>	4600-5400	4800-5600	4800-5600	4800-5600	5000-5800
<b>Engine Type:</b>	V6 (24-valve, DOHC)	V8 (32-valve, DOHC)	V8 (32-valve, DOHC)	V8 (32-valve, DOHC)	V12 (48-valve, DOHC)
<b>Displacement:</b>	3.4L (209 cu in)	4.6L (279 cu in)	4.6L (279 cu in)	4.6L (279 cu in)	7.6L (461 cu in)
<b>Induction:</b>	Performance-tuned intake manifold	Performance-tuned intake manifold	Performance-tuned intake manifold	Performance-tuned intake manifold	Performance-tuned intake manifold
<b>Starting:</b>	Electric start with SmartStart protection	Electric start with SmartStart protection	Electric start with SmartStart protection	Electric start with SmartStart protection	Electric start with SmartStart protection
<b>Gear Ratio:</b>	1.85:1	1.75:1	1.75:1	1.75:1	2.50:1
<b>Alternator:</b>	85 amp (1071 watt)	85 amp (1071 watt)	85 amp (1071 watt)	115 amp (1449 watt)	150 amp (1890 watt)
<b>Trim System:</b>	Power trim and tilt	Power trim and tilt	Power trim and tilt	Power trim and tilt	Power trim and tilt
<b>Dry Weight:</b>	483lbs (220kg)	527lbs (239kg)	527lbs (239kg)	600lbs (55kg)	1260lbs (572kg)
<b>Steering:</b>	Hydraulic Power Big Tiller	Hydraulic Power Big Tiller	Hydraulic Power Big Tiller	Electro-hydraulic power JPO (option)	Integrated electro-hydraulic power JPO (option)

<b>Shaft Length:</b>	20 in (508mm) 25 in (635mm)	20 in (508mm) 25 in (635mm) 30 in (762mm)	20 in (508mm) 25 in (635mm) 30 in (762mm)	20 in (508mm) 25 in (635mm) 30 in (762mm)	20 in (508mm) 25 in (635mm) 30 in (762mm) 35 in (889mm)
----------------------	--------------------------------	---	---	---	--



# **MERCURY**

**GO BOLDLY.®**



© 2022 Mercury Marine. All Rights Reserved. Reproduction in whole or in part without permission is prohibited.

CZONE is a registered trademark of Power Products, LLC. GARMIN is a registered trademark of Garmin Ltd. iPhone is a registered trademark of Apple, Inc. LOWRANCE is a registered trademark of Navico Holding AS Corporation. RAYMARINE is a registered trademark of Teledyne FLIR, LLC. SIMRAD is a registered trademark of Kongsberg Maritime AS Company. All other trademarks belong to Brunswick Corporation.

Product information in this brochure is accurate as of May, 2022. For the latest content, please visit [MercuryMarine.com](https://www.MercuryMarine.com)