



Parts Manual

Mfg. No: 1697143-00
1022, 9.5 Gross TP 22" Single Stage
Snowthrower

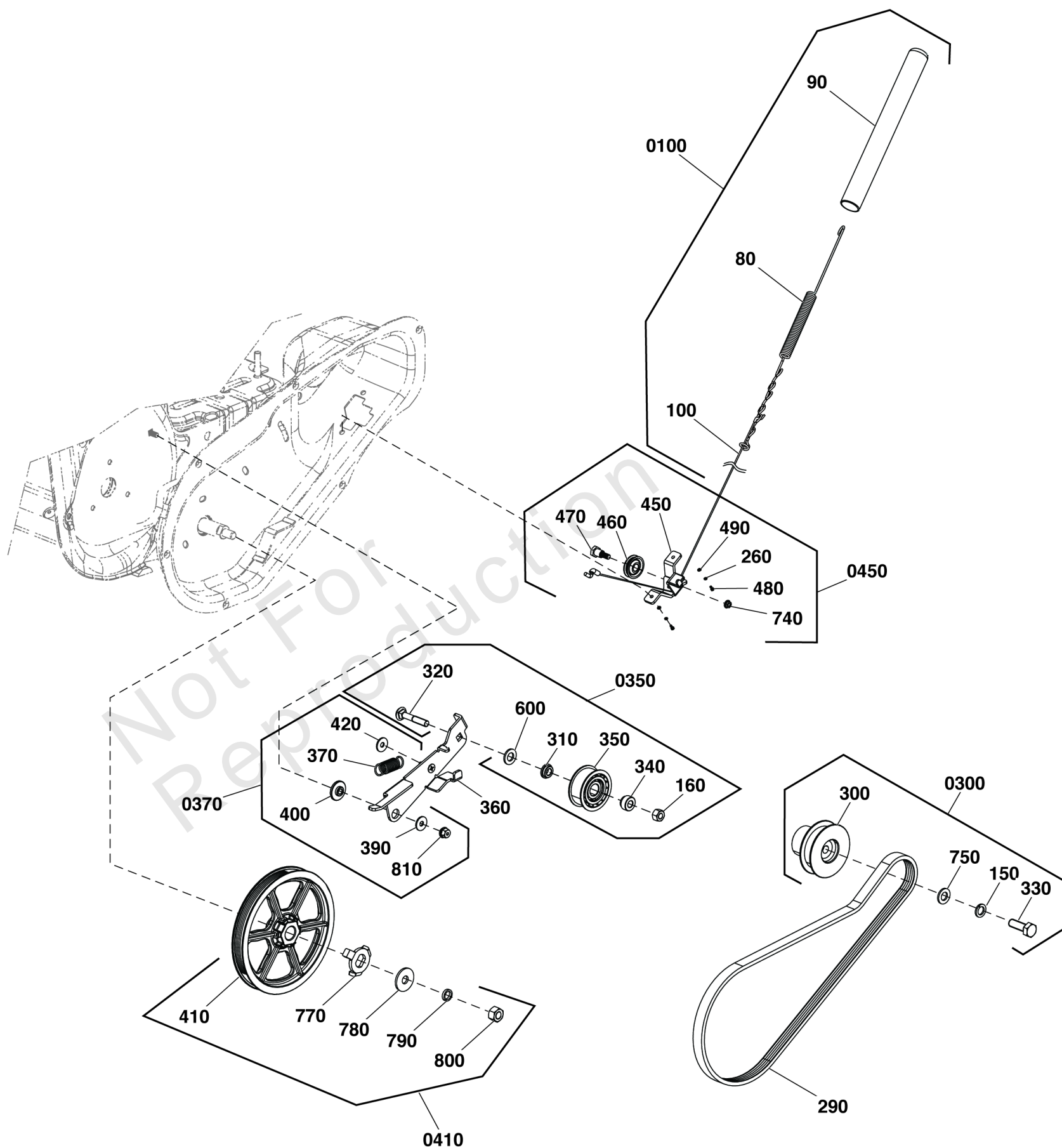
Model Components	Page
Auger Drive Group.....	4
Auger Group.....	6
Chute Group - Manual.....	8
Chute Rotation Group - Manual.....	10
Decals Group.....	12
Engine Group.....	14
Frame Group.....	16
Handles & Controls Group.....	18
Wheel & Body Covering Group.....	20
Torque Specification Chart.....	22

Not For
Reproduction

Auger Drive Group

Note: Unless noted otherwise, use the standard torque specifications

Mfg. No: 1697143-00



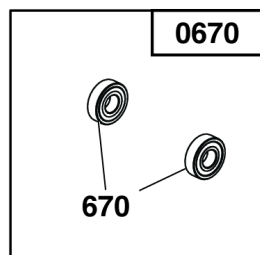
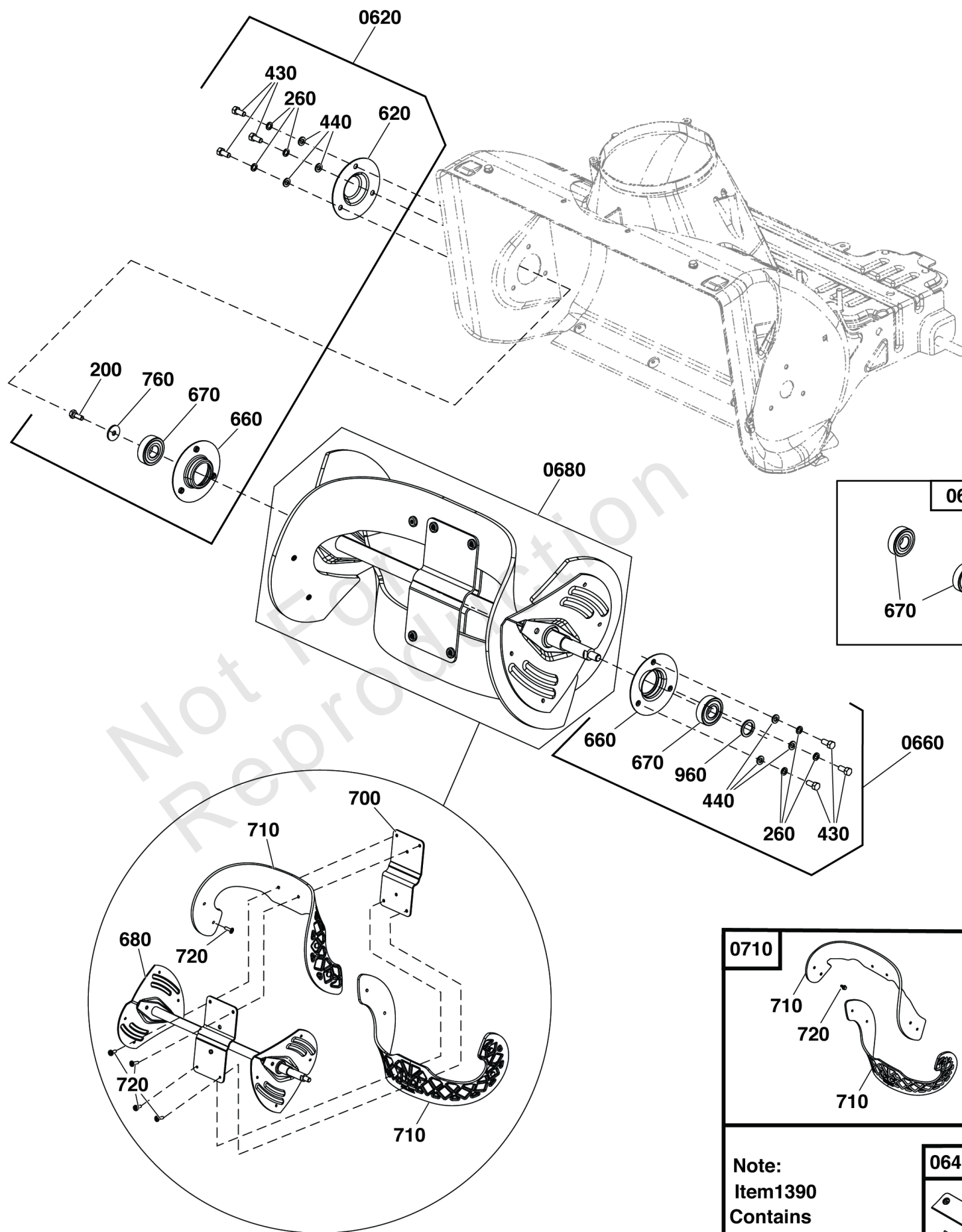
Auger Drive Group

REF NO	PART NO	QTY	DESCRIPTION
290	709868	1	BELT, Drive
360	709927	1	PLATE, Tension
0100	709870	1	KIT, AUGER CABLE -(Incl. Ref. Nos. 80, 90, 100)
80	-----	1	SPRING, Cable
90	-----	1	SLEEVE, Rubber
100	-----	1	CABLE, Auger
0300	709876	1	KIT, ENGINE PULLEY -(Incl. Ref. Nos. 150, 300, 330, 750)
150	-----	1	WASHER, M10, Split Lock
300	-----	1	PULLEY, Driver
330	720016	1	SCREW, 3/8-24 x 1, Hex Head
750	-----	1	WASHER, 10x28x3, Flat
0350	709872	1	KIT, IDLER PULLEY, TENSION PLATE -(Incl. Ref. Nos. 160, 310, 320, 340, 350, 600)
160	-----	1	NUT, M8, Lock
310	-----	1	Spacer, 8.5 ID, 18 OD, 6 Thick, Shoulder
320	-----	1	BOLT, M8x40, Carriage
340	-----	1	SPACER, Idler Pulley
350	-----	1	PULLEY, 8 ID, 53 OD, 22 Wide, Idler
600	-----	1	WASHER, 10x20x1.8, Flat
0370	709874	1	KIT, HARDWARE, IDLER BRACKET -(Incl. Ref. Nos. 370, 390, 400, 420, 810)
370	709869	1	SPRING, Tension
390	-----	1	WASHER, 6 X 18 X 1.5, Flat
400	-----	1	SPACER, Idler Arm
420	-----	1	WASHER, 8x22x2, Flat
810	-----	1	* NUT, M6, Flange Head, Lock
0410	709875	1	KIT, AUGER PULLEY -(Incl. Ref. Nos. 410, 770, 780, 790, 800)
410	-----	1	PULLEY, Driven
770	-----	1	CLAW, Coupling
780	-----	1	WASHER, 10x25x2, Flat
790	-----	1	WASHER, M10, Split Lock
800	-----	1	NUT, Lock, M10
0450	709871	1	KIT, CABLE BASE, AUGER DRIVE -(Incl. Ref. Nos. 260, 450, 460, 470, 480, 490, 740)
260	-----	2	WASHER, M6, Split Lock, MC
450	-----	1	BRACKET, Cable Guide
460	-----	1	PULLEY, Cable
470	-----	1	SCREW, M6 X 12, Hex Head Shoulder
480	7091835	2	SCREW, M6 1.0X12MM, Hex Head, CZ
490	-----	2	WASHER, 6x12x.7, Flat
740	-----	1	NUT, M6, Flange Head

Auger Group

Note: Unless noted otherwise, use the standard torque specifications

Mfg. No: 1697143-00



<p>0710</p>	<p>1390</p>
<p>Note: Item 1390 Contains Item 0640 and Item 0710</p>	<p>0640 Ref. Frame Group</p> <p>Ref. Frame Group</p>
<p>1390</p>	

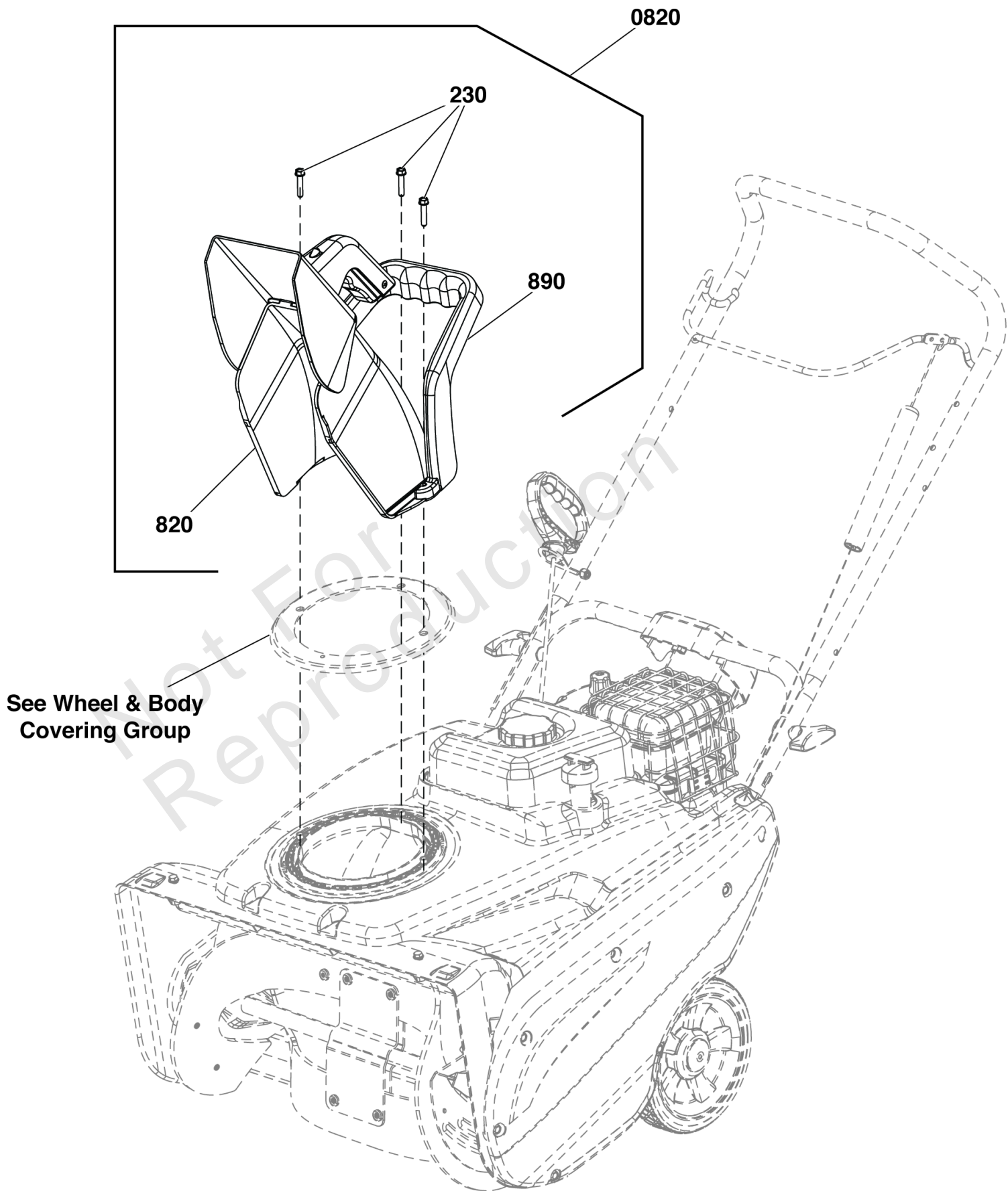
Auger Group

REF NO	PART NO	QTY	DESCRIPTION
0620	709882	1	KIT, AUGER BEARING, RIGHT -(Incl. Ref. Nos. 200, 260, 430, 440, 620, 660, 670, 760)
200	-----	1	BOLT, M6x16, Hex Head
260	-----	6	WASHER, M6, Split Lock, MC
430	7091835	6	SCREW, M6 1.0X12MM, Hex Head, CZ
440	-----	6	WASHER, 6x12x.7, Flat
620	-----	1	CAP, Bearing
660	-----	1	RETAINER, Bearing
670	-----	1	BEARING
760	-----	1	WASHER, 6x23x3, Flat
0640	770004	1	KIT-SCRAPER BAR -(Incl. Ref. Nos. 380, 630, 640, 650)
380	1752935	4	NUT, 1/4-20, Nylon Hex, CZ
630	5025299X5	4	SCREW, 1/4-20 x 5/8, Allen Head
640	-----	1	BAR, Scraper, Robolon
650	-----	1	SUPPORT, Scraper Blade
0660	709878	1	KIT, AUGER BEARING, LEFT -(Incl. Ref. Nos. 260, 430, 440, 660, 670, 960)
260	-----	3	WASHER, M6, Split Lock, MC
430	7091835	3	SCREW, M6 1.0X12MM, Hex Head, CZ
440	-----	3	WASHER, 6x12x.7, Flat
660	-----	1	RETAINER, Bearing
670	-----	1	BEARING
960	-----	1	WASHER, Flat, 18x24x2
0670	709877	1	KIT, AUGER BEARING -(Incl. Ref. No. 670)
670	-----	2	BEARING
0680	709881	1	KIT-AUGER ASSEMBLY -(Incl. Ref. Nos. 680, 700, 710, 720)
680	-----	1	SHAFT, Auger Assembly
700	-----	1	PLATE, Center
710	1739727	2	FLIGHT, Auger
720	7091246	12	SCREW, 1/4-20 x 3/4" Pan Head Self-Tap (Torx) BZ
0710	1687804	1	KIT, AUGER FLIGHT -(Incl. Ref. Nos. 710, 720)
710	1739727	2	FLIGHT, Auger
720	7091246	12	SCREW, 1/4-20 x 3/4" Pan Head Self-Tap (Torx) BZ
1390	709879	1	KIT, AUGER FLIGHT & SCRAPER BAR -(Incl. Ref. Nos. 380, 630, 640, 650, 710, 720)
380	1752935	4	NUT, 1/4-20, Nylon Hex, CZ
630	5025299X5	4	SCREW, 1/4-20 x 5/8, Allen Head
640	-----	1	BAR, Scraper, Robolon
650	-----	1	SUPPORT, Scraper Blade
710	1739727	2	FLIGHT, Auger
720	7091246	12	SCREW, 1/4-20 x 3/4" Pan Head Self-Tap (Torx) BZ

Chute Group - Manual

Note: Unless noted otherwise, use the standard torque specifications

Mfg. No: 1697143-00



Chute Group - Manual

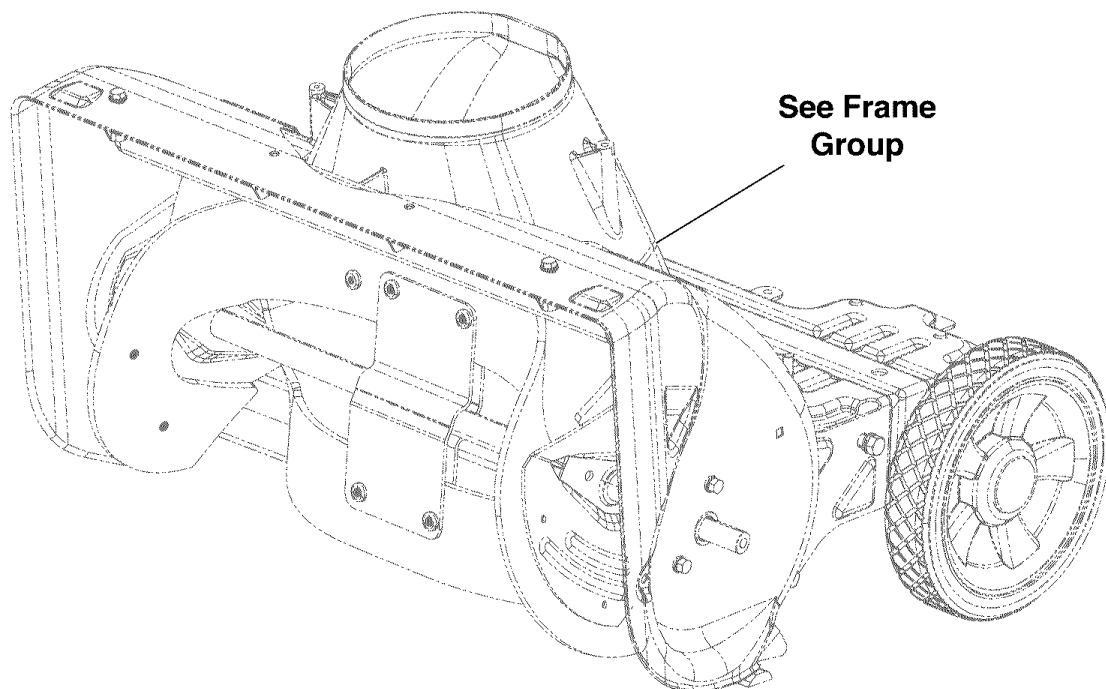
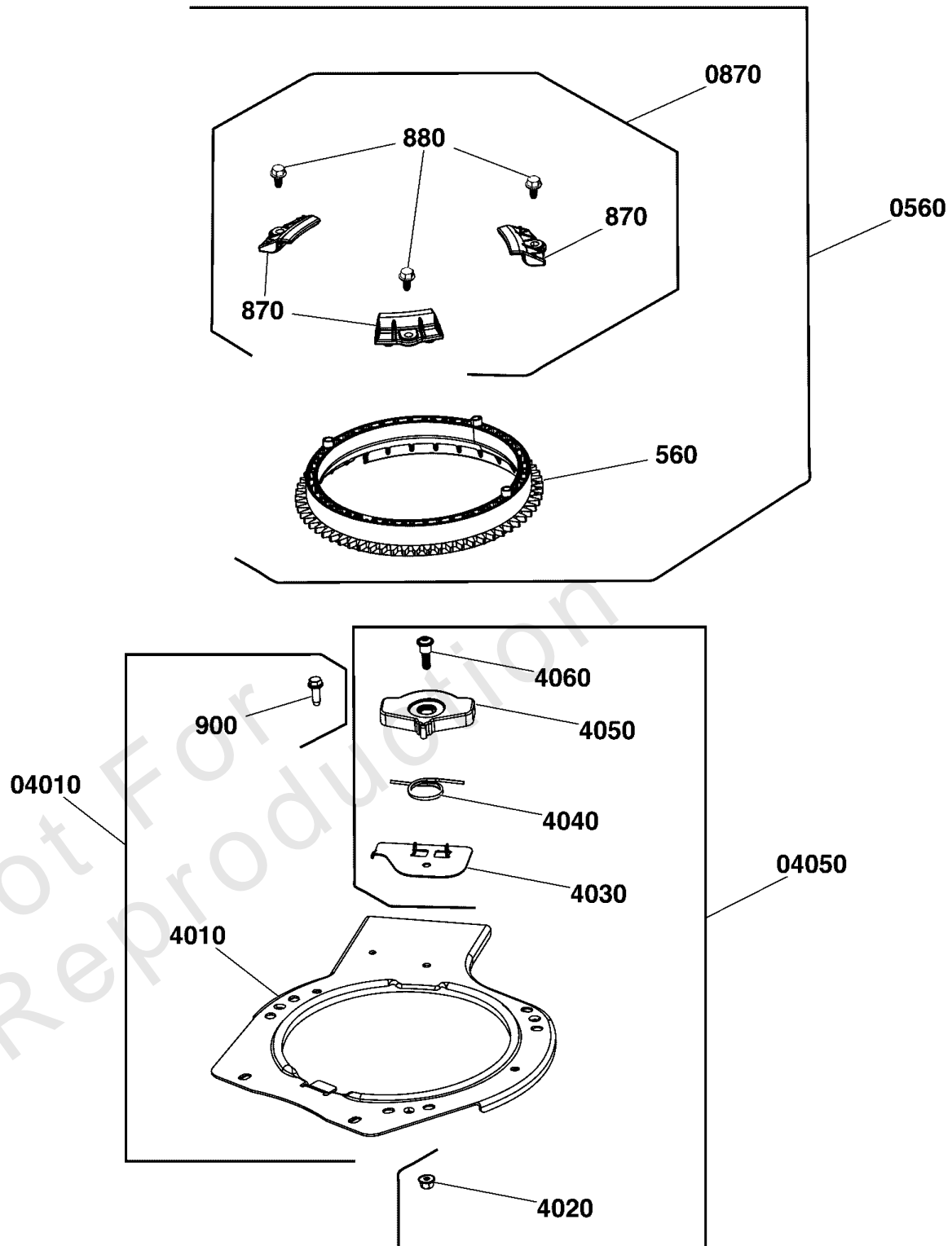
REF NO	PART NO	QTY	DESCRIPTION
0820	709921	1	KIT, CHUTE ASSEMBLY -(Incl. Ref. Nos. 230, 820, 890, 301, 302)
230	1751399YP	3	SCREW, Self Tapping, 1/4-15 x 1-1/4
820	-----	1	*CHUTE, Assembly, Quick Deflector
890	1739692YP	1	HANDLE, Chute Rotation
301	1737865YP	1	DECAL, Danger Chute Warning, FR/ENG
302	1739966YP	1	DECAL, Chute, FR-EN

Not For Reproduction

Chute Rotation Group - Manual

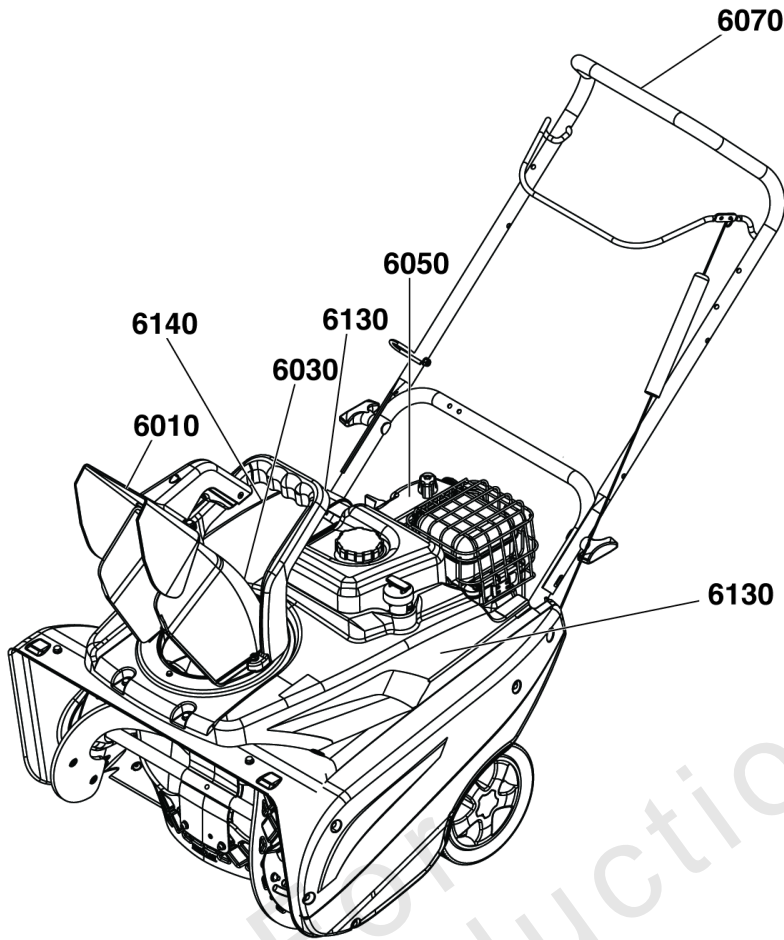
Note: Unless noted otherwise, use the standard torque specifications

Mfg. No: 1697143-00



Chute Rotation Group - Manual

REF NO	PART NO	QTY	DESCRIPTION
0560	709922	1	KIT, CHUTE GEAR -(Incl. Ref. Nos. 560, 870, 880)
560	-----	1	GEAR, 65T, 8P, Driven, SS Chute Rotation
870	-----	3	RETAINER, Chute
880	703054	3	SCREW, Hex Washer Head, 1/4-20 x 5/8
0870	709923	1	KIT, CHUTE RETAINER -(Incl. Ref. Nos. 870, 880)
870	-----	3	RETAINER, Chute
880	703054	3	SCREW, Hex Washer Head, 1/4-20 x 5/8
04050	709924	1	KIT, CHUTE ROTATION LEVER -(Incl. Ref. Nos. 4020, 4030, 4040, 4050, 4060)
4020	703463	1	NUT, Flange Nylock , 1/4-20
4030	-----	1	BASE PLATE
4040	-----	1	SPRING, Torsion
4050	-----	1	LEVER, Chute Rotation
4060	-----	1	SCREW, Shoulder, Button Torx Washer Head, 1/4-20 x 1
04010	709925	1	KIT, CHUTE ADAPTER PLATE -(Incl. Ref. Nos. 900, 4010)
900	-----	2	*SCREW, Hex Washer, 1/4-15 X 1.00, CZ
4010	-----	1	*PLATE, Chute Mounting



⚠ DANGER

Amputation hazard
Contact with moving parts inside chute will cause serious injury.

- Shut off engine before unclogging discharge chute.
- Use clean-out tool, not hands!

Risque d'amputation
Tout contact avec des pièces en mouvement à l'intérieur de la goulotte provoquera de graves blessures.

- Arrêter le moteur avant de dégager la goulotte d'éjection.
- Utiliser l'outil de dégagement, pas les mains!

1737985

6010

⚠ DANGER

Shut off engine and remove key before performing maintenance or repair work.		Arrêter le moteur et retirer la clé avant d'effectuer tout entretien ou toute réparation.
Read the operator's manual for operating and safety instructions.		Lire les consignes de sécurité et d'utilisation dans le manuel d'utilisation.
Thrown Objects Hazard • Never direct discharge chute towards persons or property.		Danger objets projetés • Ne jamais diriger la chute en direction des personnes ou biens matériels.
Amputation Hazard • Contact with auger will cause serious injury. • Keep hands, feet and clothing away. • Keep bystanders away.		Risque d'amputation • Tout contact avec la tarière provoquera de graves blessures. • Tenir vos pieds, vos mains et vêtements à distance. • Tenir les spectateurs à distance.

The spark ignition system complies with the Canadian standard CSZ 1002. Ce système d'allumage par étincelle se conforme au standard NEMA 502 du Canada.

6030

STEPS TO EASY STARTING
ÉTAPES POUR UN DÉMARRAGE FACILE

1 Turn engine ON
Mettez le moteur sur « ON » (marche)

2 Turn choke knob to CHOKE
Tournez le bouton de l'étrangleur sur « CHOKE »

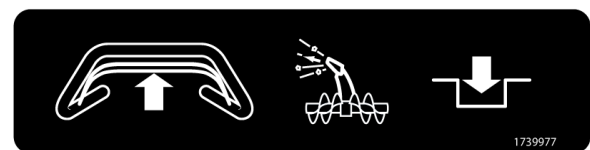
3 For COLD engine PRIME 2X
Si le moteur est FROID amorcez-le 2 fois

After engine starts, turn to RUN
Une fois le moteur en marche, mettez-le sur « RUN »

6050

Simplicity

6130



6070

1022

6140

Decals Group

REF NO	PART NO	QTY	DESCRIPTION
6010	1737865YP	1	DECAL, Danger Chute Warning, FR/ENG
6030	1739966YP	1	DECAL, Chute, FR-EN
6050	1739970YP	1	DECAL, 1-2-3 Start, FR-EN
6070	1739977YP	1	DECAL, Bail Engagement
6130	1757674YP	2	DECAL, Simplicity
6140	770576	1	DECAL, Model, 1022 -(Recoil Start)

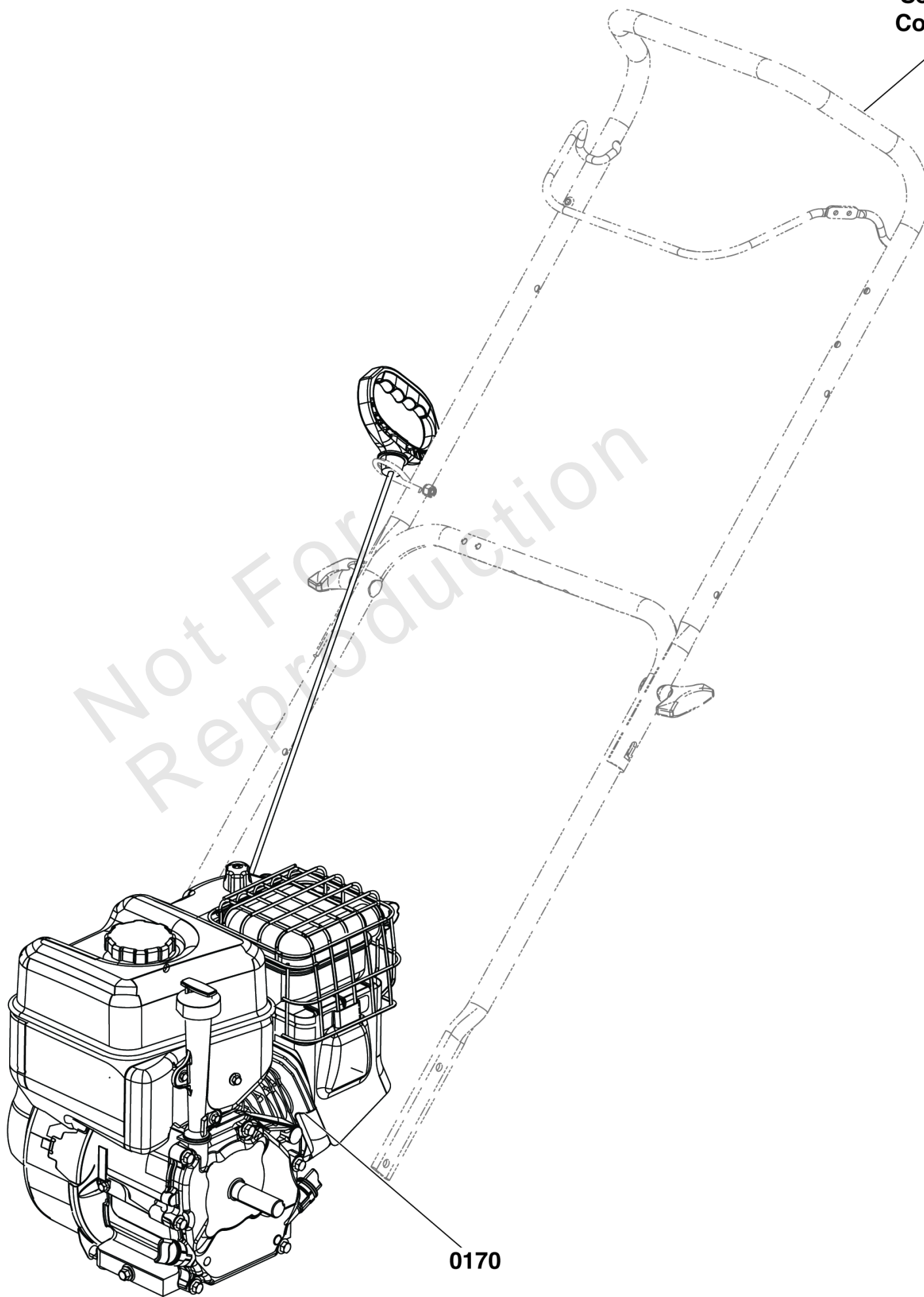
Not For Reproduction

Engine Group

Note: Unless noted otherwise, use the standard torque specifications

Mfg. No: 1697143-00

See Handles & Controls Group



Engine Group

REF NO	PART NO	QTY	DESCRIPTION
0170	13A132-0003-F1	1	ENGINE, Briggs & Stratton, 9.5 GTP, Snow Series -(Engine Model: 13A132-0003-F1) (Refer to Note: *)

Not For
Reproduction

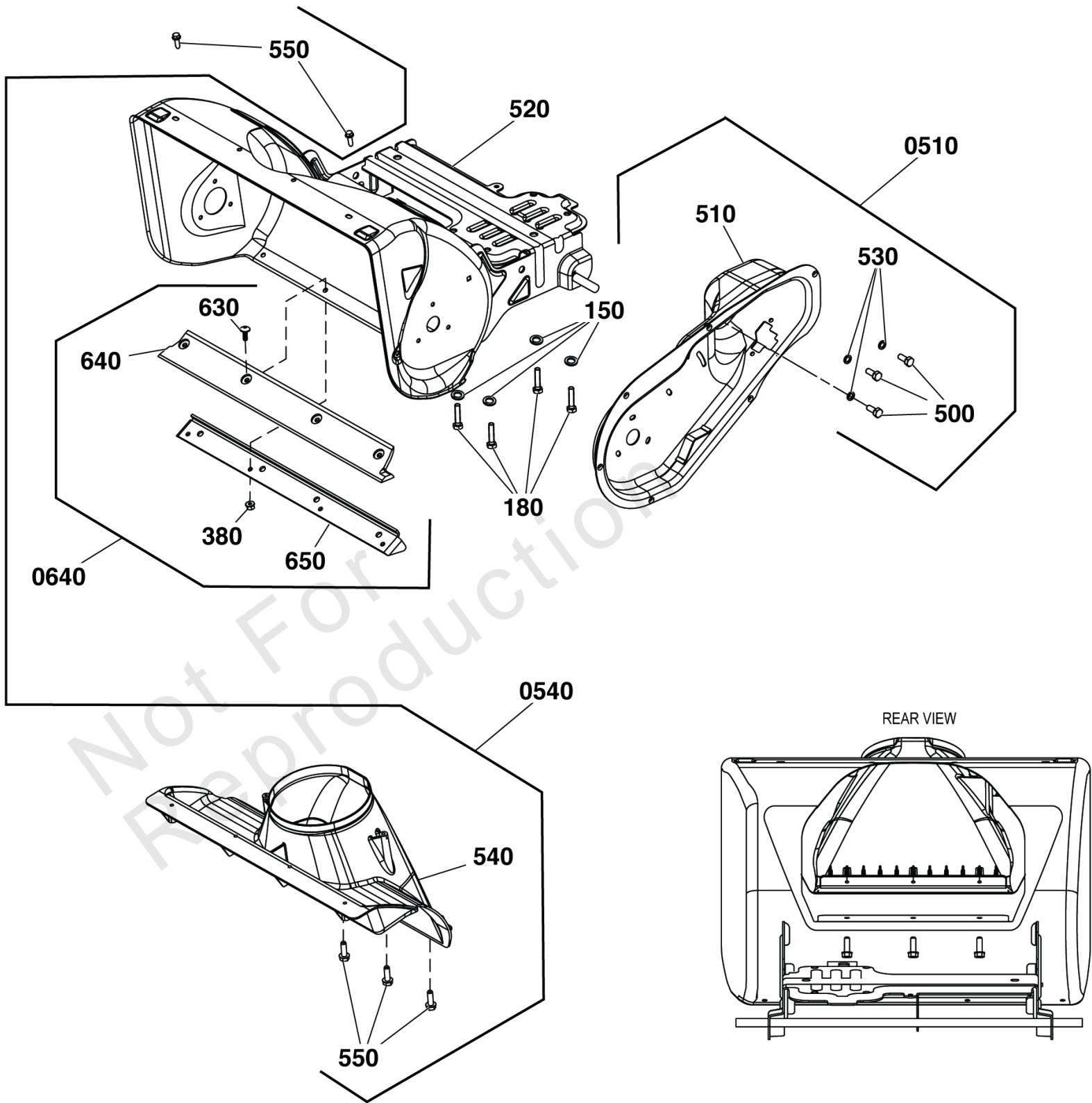
Footnotes:

Note* To verify your specific engine model, please reference the ID Tag located on your engine. See your local Briggs & Stratton distributor for parts and service.

Frame Group

Note: Unless noted otherwise, use the standard torque specifications

Mfg. No: 1697143-00



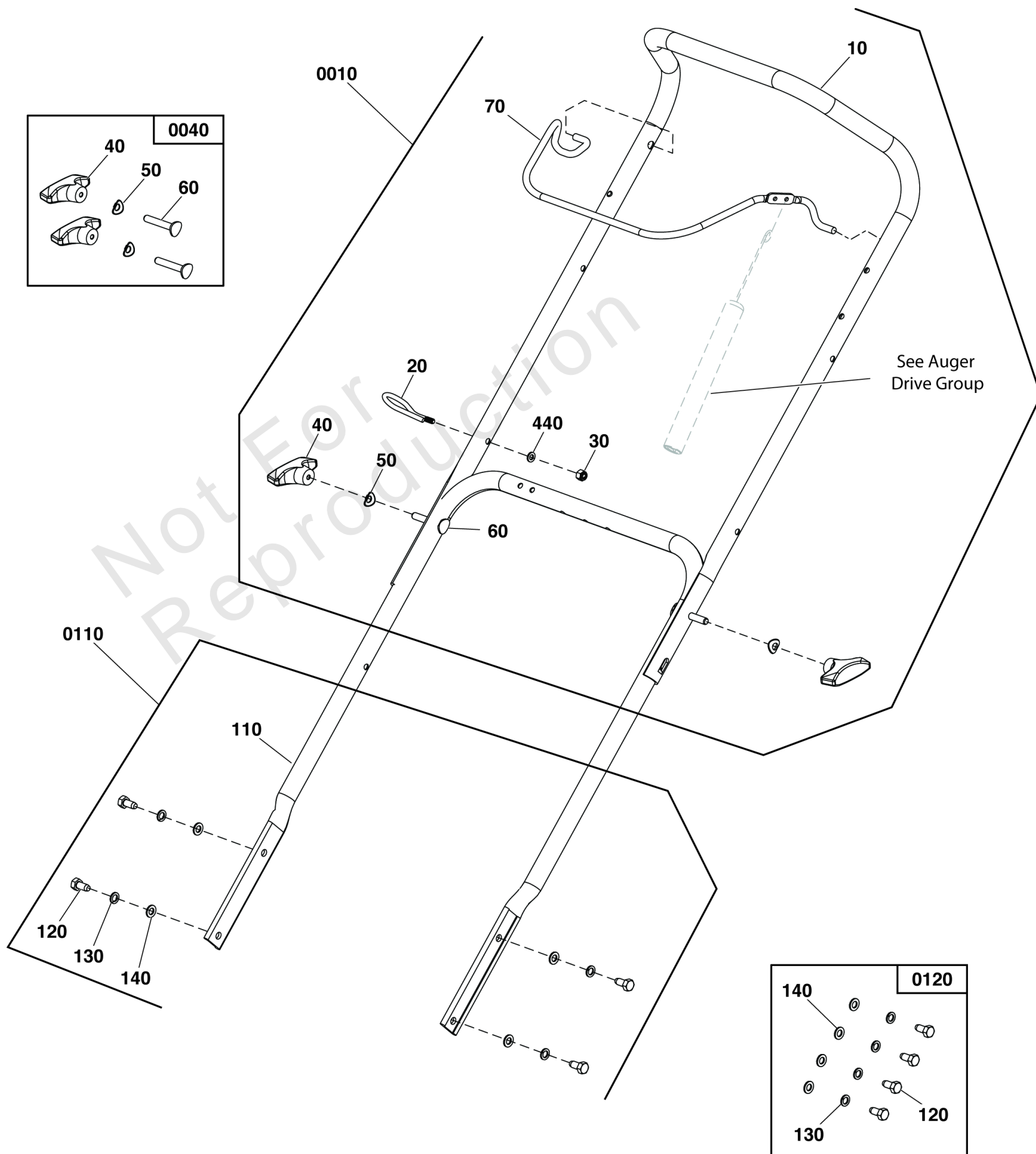
Frame Group

REF NO	PART NO	QTY	DESCRIPTION
150	-----	4	WASHER, M10, Split Lock
180	-----	4	SCREW-HEX WSHR HD TAPTT 3/8-16X1.250, ZC
520	-----	1	HOUSING, Auger
0510	709866	1	KIT, DRIVE HOUSING -(Incl. Ref. Nos. 500, 510, 530)
500	1752876YP	3	CAPSCREW, Hex Head, 5/16-24 x 5/8
510	-----	1	HOUSING, Drive
530	703116	3	WASHER, Split Lock, .32 x .58 x .08
0540	84004738	1	KIT, CHIMNEY -(Incl. Ref. Nos. 540, 550)
540	-----	1	CHIMNEY
550	7091081SM	5	SCREW, 1/4-15X3/4, Self-Tapping, BZ
0640	770004	1	KIT-SCRAPER BAR -(Incl. Ref. Nos. 380, 630, 640, 650)
380	1752935YP	4	NUT, 1/4-20, Nylon Hex, CZ
630	5025299X5YP	4	SCREW, 1/4-20 X 5/8
640	-----	1	BAR, Scraper, Robolon
650	1752660AYP	1	SUPPORT, Scraper Blade

Handles & Controls Group

Note: Unless noted otherwise, use the standard torque specifications

Mfg. No: 1697143-00



Handles & Controls Group

REF NO	PART NO	QTY	DESCRIPTION
0010	709860	1	KIT, UPPER HANDLE -(Incl. Ref. Nos. 10, 20, 30, 40, 50, 60, 70, 440)
10	-----	1	HANDLEBAR, Upper SS
20	84002745	1	GUIDE, ROPE
30	-----	1	NUT, M6, Lock
40	-----	2	KNOB, Wing, M8
50	-----	2	WASHER, M8, Curved
60	-----	2	BOLT, M8x40, Carriage, Curved Head
70	709858	1	BAIL, Engine Stop
440	-----	1	WASHER, 6x12x.7, Flat
0040	709859	2	KIT, UPPER HANDLE HARDWARE -(Incl. Ref. Nos. 40, 50, 60)
40	-----	2	KNOB, Wing, M8
50	-----	2	WASHER, M8, Curved
60	-----	2	BOLT, M8x40, Carriage, Curved Head
0110	709862	1	KIT, LOWER HANDLE -(Incl. Ref. Nos. 110, 120, 130, 140)
110	-----	1	HANDLE, Lower
120	-----	4	SCREW, Hex Head, M8 X 20
130	-----	4	WASHER, Lock, M8
140	-----	4	WASHER, Flat, 8 X 16 X 1.2
0120	709861	1	KIT, LOWER HANDLE HARDWARE -(Incl. Ref. Nos. 120, 130, 140)
120	-----	4	SCREW, Hex Head, M8 X 20
130	-----	4	WASHER, Lock, M8
140	-----	4	WASHER, Flat, 8 X 16 X 1.2

Wheel & Body Covering Group

REF NO	PART NO	QTY	DESCRIPTION
0190	709883	1	KIT, Wheel Cover, Pewter -(Incl. Ref. Nos. 190)
190	-----	2	COVER, End, Wheel, Pewter
0220	709885	1	KIT, WHEEL, LEFT, PEWTER -(Incl. Ref. Nos. 190, 200, 210, 220 & 390)
190	-----	1	COVER, End, Wheel, Pewter
200	-----	1	BOLT, M6x16, Hex Head
210	-----	1	WASHER, M6, Split Lock, MC
220	-----	1	WHEEL, Left, 1.75 X 8, Pewter
390	-----	1	WASHER, 6 X 18 X 1.5, Flat
0225	770059	1	KIT, WHEEL, RIGHT, PEWTER -(Incl. Ref. Nos. 190, 200, 210, 225 & 390)
190	-----	1	COVER, End, Wheel, Pewter
200	-----	1	BOLT, M6x16, Hex Head
210	-----	1	WASHER, M6, Split Lock, MC
225	-----	1	WHEEL, Right, 1.75 X 8, Pewter
390	-----	1	WASHER, 6 X 18 X 1.5, Flat
0240	709890	1	KIT, Top Cover -(Incl. Ref. Nos. 30, 240,250,270,390,550 &950))
30	-----	1	NUT, M6, Lock
240	-----	1	COVER, Top, Orange
250	-----	2	SCREW, M6x16, Hex Washer Head
270	-----	2	NUT, M6, CLIP
390	-----	1	WASHER, 6 X 18 X 1.5, Flat
550	7091081SM	2	SCREW, 1/4-15X3/4, Self-Tapping, BZ
950	-----	1	SCREW, M6x40, Hex Flange Head
0280	709895	1	KIT, Drive Case Cover -(Incl. Ref. Nos. 250, 270 & 280)
250	-----	7	SCREW, M6x16, Hex Washer Head
270	-----	1	NUT, M6, CLIP
280	-----		COVER, Drive Case, Black
0570	709887	1	KIT, CHUTE MOISTURE COVER -(Incl. Ref. Nos. 570 & 590)
570	-----	1	COVER, Chute Moisture
590	316042MA	1	CAPSCREW, Hex Washer Head, #10-HL x 5/8
0610	709915	1	KIT, Side Cover, Right -(Incl. Ref. Nos. 30, 250, 270, 390, 610, 950 & 970)
30	-----	1	NUT, M6, Lock
250	-----	2	SCREW, M6x16, Hex Washer Head
270	-----	2	NUT, M6, CLIP
390	-----	1	WASHER, 6 X 18 X 1.5, Flat
610	-----	1	COVER, Side, Orange
950	-----	1	SCREW, M6x40, Hex Flange Head
970	-----	1	SCREW, M5x20, Knob, Self-Tapping

Hardware Identification & Torque Specifications

Torque Specification Chart								
FOR STANDARD METRIC MACHINE HARDWARE (Tolerance ± 20%)								
Property Class	5.6		8.8		10.9		12.9	
	Class 5.6		Class 8.8		Class 10.9		Class 12.9	
Size Of Hardware	in/lbs	Nm.	in/lbs	Nm.	in/lbs	Nm.	in/lbs	Nm.
	ft/lbs		ft/lbs		ft/lbs		ft/lbs	
M3	5.88	.56	13.44	1.28	19.2	1.80	22.92	2.15
M4	13.44	1.28	30.72	2.90	43.44	4.10	52.56	4.95
M5	26.4	2.50	60.96	5.75	5.97	8.10	7.15	9.7
M6	44.64	4.3	7.3	9.9	10.3	14	12.1	16.5
M7	5.2	7.1	12.1	16.5	16.9	23	19.9	27
M8	7.7	10.5	17.7	24	25	34	29	40
M10	15	21	35	48	50	67	59	81
M12	26	36	61	83	86.2	117	103	140
M14	42	58	101	132	136	185	162	220
M16	64	88	147	200	210	285	250	340
M18	89	121	202	275	287	390	346	470
M20	126	171	290	390	405	550	486	660
M22	169	230	390	530	559	745	656	890
M24	217	295	497	375	708	960	840	1140
M27	320	435	733	995	1032	1400	1239	1680
M30	435	590	995	1350	1401	1900	1681	2280
M33	590	800	1349	1830	1902	2580	2278	3090
M36	759	1030	1740	2360	2441	3310	2935	3980
M39	988	1340	2249	3050	3163	4290	3798	5150

Torque Specification Chart						
FOR STANDARD MACHINE HARDWARE (Tolerance ± 20%)						
Hardware Grade	No Marks		SAE Grade 5		SAE Grade 8	
	SAE Grade 2		SAE Grade 5		SAE Grade 8	
Size Of Hardware	in/lbs	Nm.	in/lbs	Nm.	in/lbs	Nm.
	ft/lbs		ft/lbs		ft/lbs	
8-32	19	2.1	30	3.4	41	4.6
8-36	20	2.3	31	3.5	43	4.9
10-24	27	3.1	43	4.9	60	6.8
10-32	31	3.5	49	5.5	68	7.7
1/4-20	66	7.6	8	10.9	12	16.3
1/4-28	76	8.6	10	13.6	14	19.0
5/16-18	11	15.0	17	23.1	25	34.0
5/16-24	12	16.3	19	25.8	29	34.0
3/8-16	20	27.2	30	40.8	45	61.2
3/8-24	23	31.3	35	47.6	50	68.0
7/16-14	30	40.8	50	68.0	70	95.2
7/16-20	35	47.6	55	74.8	80	108.8
1/2-13	50	68.0	75	102.0	110	149.6
1/2-20	55	74.8	90	122.4	120	163.2
9/16-12	65	88.4	110	149.6	150	204.0
9/16-18	75	102.0	120	163.2	170	231.2
5/8-11	90	122.4	150	204.0	220	299.2
5/8-18	100	136	180	244.8	240	326.4
3/4-10	160	217.6	260	353.6	386	525.0
3/4-16	180	244.8	300	408.0	420	571.2
7/8-9	140	190.4	400	544.0	600	816.0
7/8-14	155	210.8	440	598.4	660	897.6
1-8	220	299.2	580	788.8	900	1,244.0
1-12	240	326.4	640	870.4	1,000	1,360.0

The guides and ruler furnished below are designed to help you select the appropriate hardware.

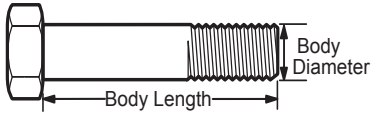


Nut, M8

Thread Diameter (mm)

Inside Diameter (in) Threads per inch

Nut, 1/2-16



Screw, M8- 1.25 x 25

Thread Diameter (mm) Distance between threads (mm) Body Length (mm)

Body Diameter Threads per inch Body Length (in)

Screw, 1/2- 16 x 2



Standard Hardware Sizing

When a washer or nut is identified as 1/2" (M8), this is the *Nominal size*, meaning the *inside diameter* is 1/2 inch (8mm metric thread diameter); if a second number is present it represents the *threads per inch* (distance between threads).

When bolt or capscrew is identified as 1/2 - 16 x 2" (M8 - 1.25 x 50), this means the *Nominal size*, or body diameter is 1/2 inch (8mm metric thread diameter), the second number, 16, represents the *threads per inch*, (*distance between threads*). The final number is the body length of the bolt or screw, 2 inches (50mm).

NOTES

- These torque values are to be used for all hardware excluding: locknuts, self-tapping screws, thread forming screws, sheet metal screws and socket head setscrews.
- Recommended seating torque values for locknuts:
 - for prevailing torque locknuts - use 65% of grade 5 torques.
 - for flange whizlock nuts and screws - use 135% of grade 5 torques.
- Unless otherwise noted on assembly drawings, all torque values must meet this specification.

Common Hardware Types

Hex Head Capscrew



Washer



Carriage Bolt



Hex Nut

Wrench & Fastener Size Guide

1/4" Bolt or Nut Wrench—7/16"	5/16" Bolt or Nut Wrench—1/2"	3/8" Bolt or Nut Wrench—9/16"	7/16" Bolt or Nut Wrench (Bolt)—5/8" Wrench (Nut)—11/16"	1/2" Bolt or Nut Wrench—3/4"
M6 Bolt or Nut Wrench—10mm	M8 Bolt or Nut Wrench—13mm	M10 Bolt or Nut Wrench—17mm	M12 Bolt or Nut Wrench—19mm	M14 Bolt or Nut Wrench—22mm

